



The region's transportation
system has got problems...
And the future is looking worse.

- Congestion is growing.
- Transportation funding is tight.
- The region is divided.

2

Study of "What If" Scenarios

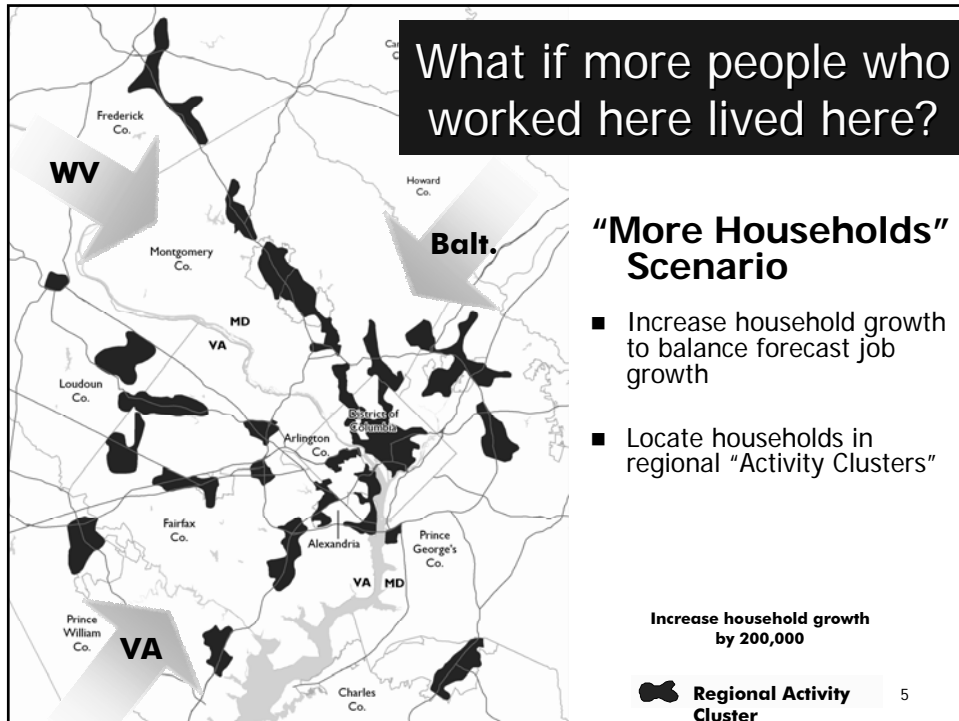
- *What if* job and housing growth were shifted? *What if* new roads or transit were built?
- How would 2030 travel conditions change?
- Not looking at "how to," just "what if."

3

Scenario 1: "More Households"

4

Overview of Transportation and Land Use Scenarios
Community Leadership Institute: April 29, 2006

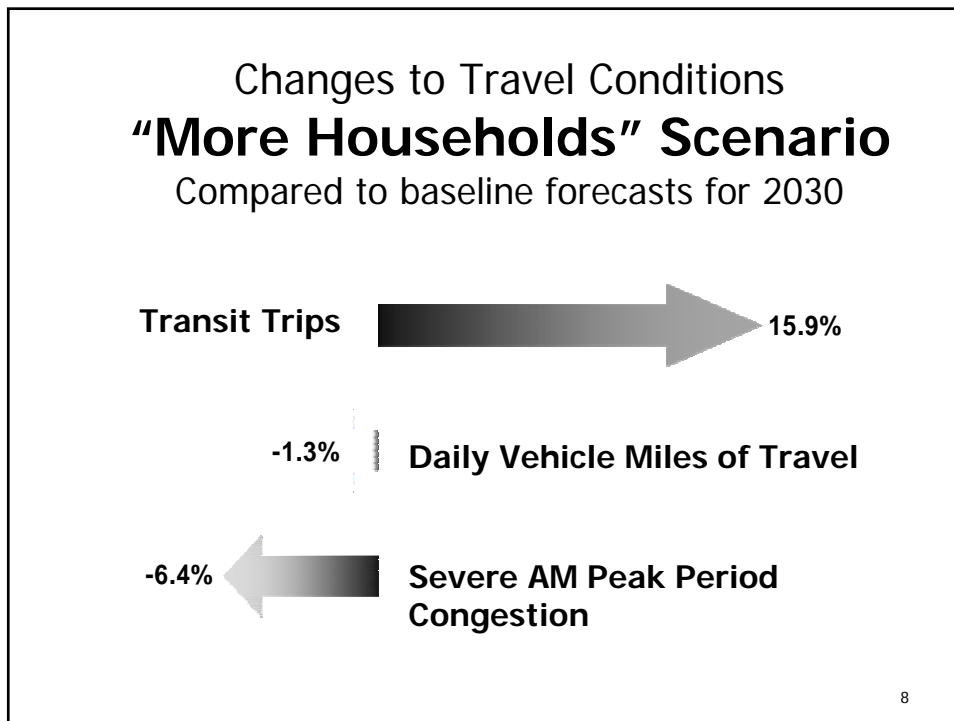
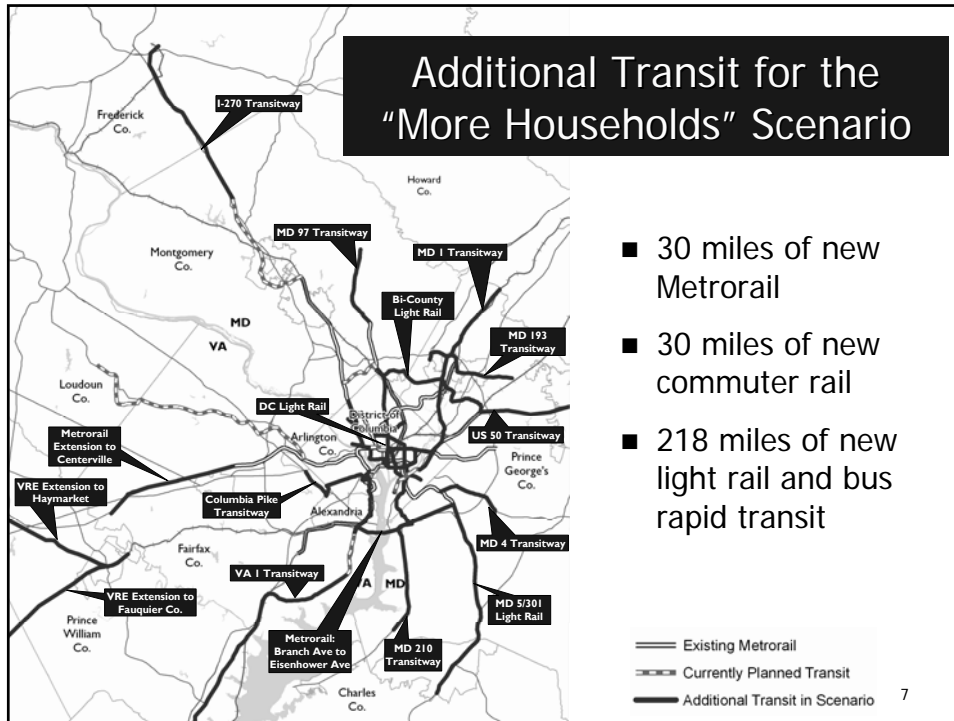


Under this scenario, parts of Tysons Corner would have three times more housing...

With densities like this...

6

Overview of Transportation and Land Use Scenarios
 Community Leadership Institute: April 29, 2006



This document is available in an alternative format upon request. Please contact Wendy Klancher at wklancher@mwcog.org, (202)962-3321 or (202)962-3213 (TDD). Allow 7 working days for preparation of the material.

Under the "More Households"
scenario, the average person would
drive 2 miles less per day . . .



Daily vehicle miles
traveled per person

Baseline: 24

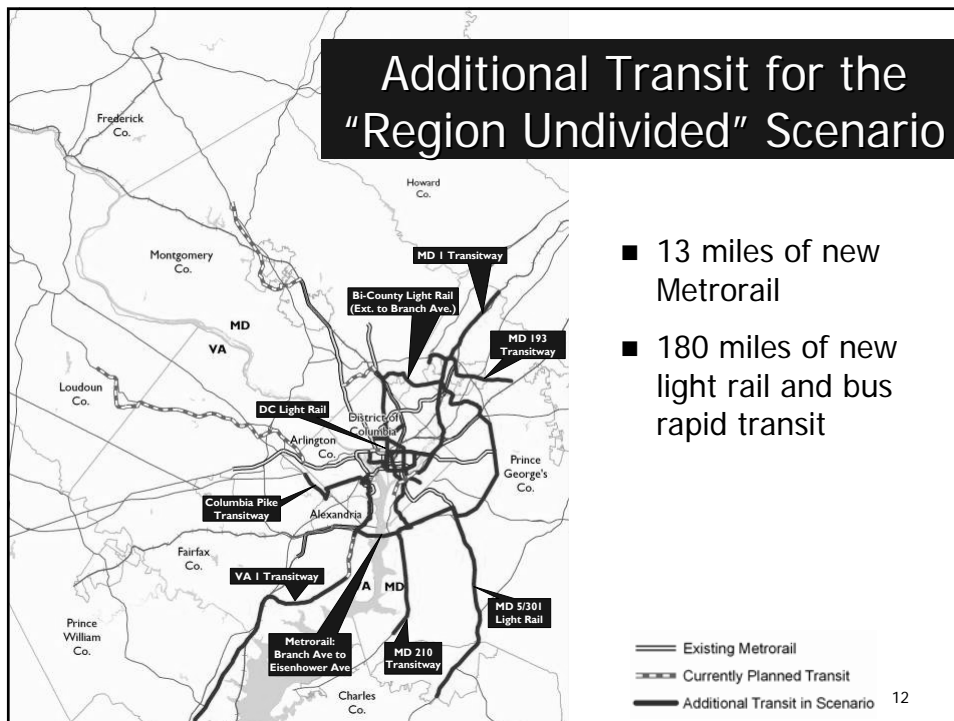
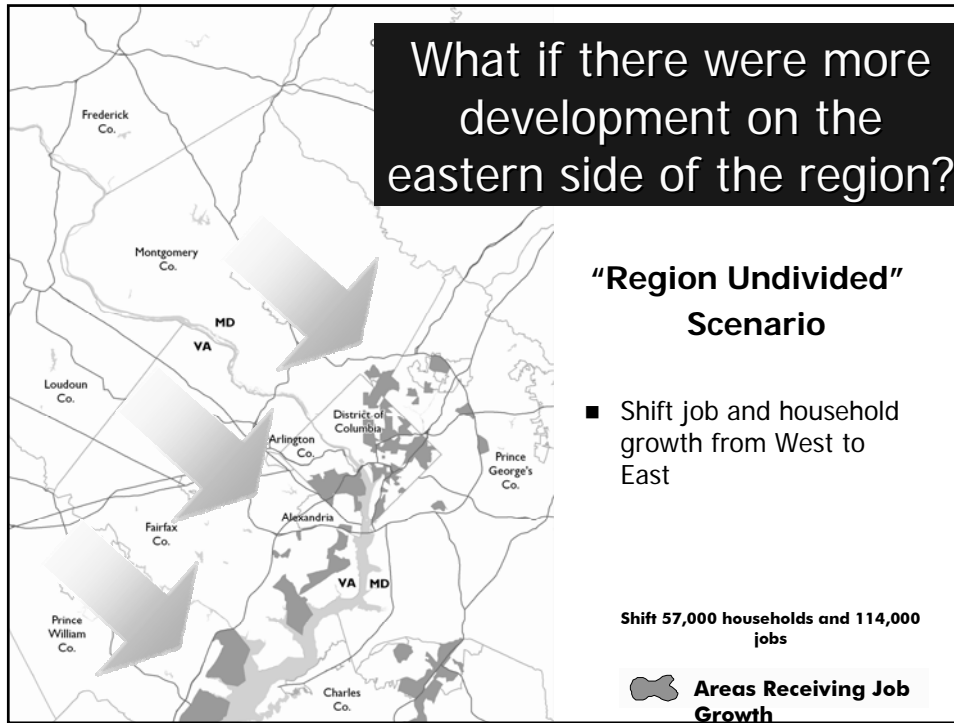
"More Households": 22

9

Scenario 2: "Region Undivided"

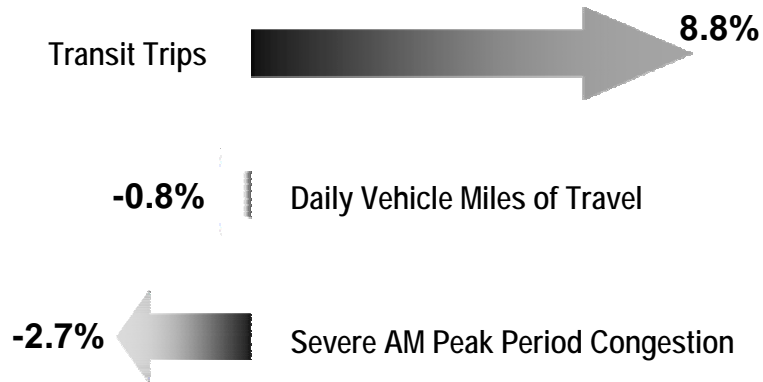
10

Overview of Transportation and Land Use Scenarios
 Community Leadership Institute: April 29, 2006



This document is available in an alternative format upon request. Please contact Wendy Klancher at wklancher@mwcog.org, (202)962-3321 or (202)962-3213 (TDD). Allow 7 working days for preparation of the material.

Changes to Travel Conditions "Region Undivided" Scenario Compared to baseline forecasts for 2030



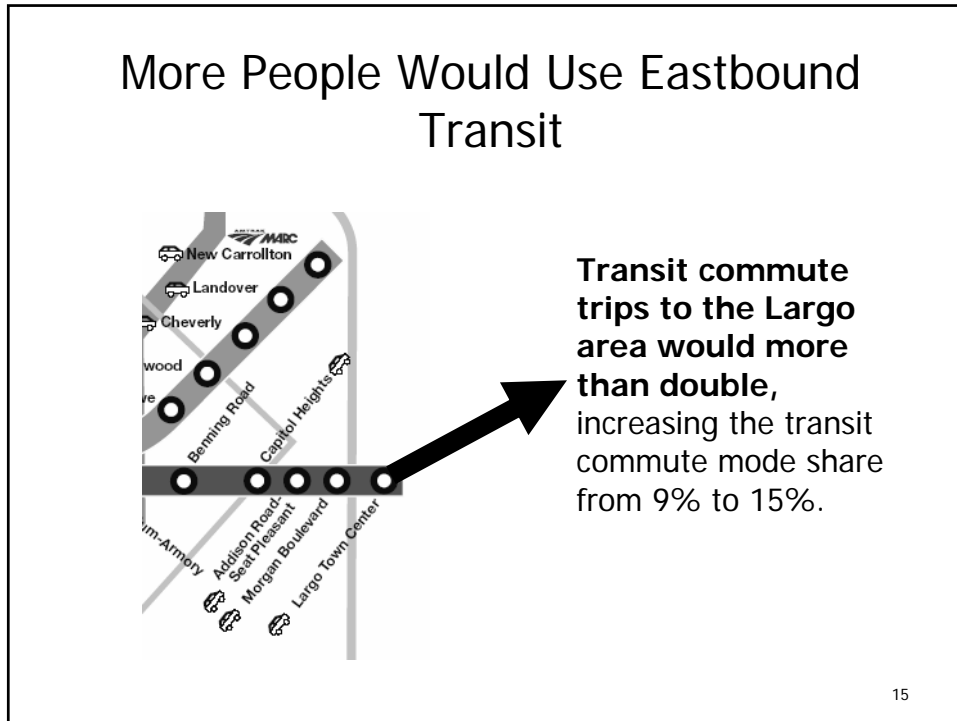
13

Largo Town Center would have three times as many jobs...

With densities that might look something like this:



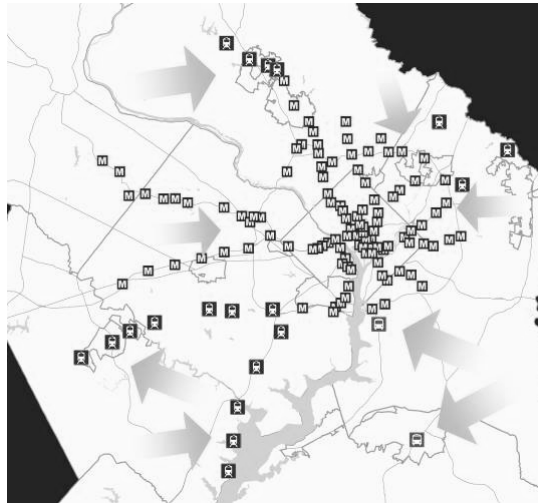
14



Scenario 3: "Transit-Oriented Development"

16

What if people lived and worked closer to transit?



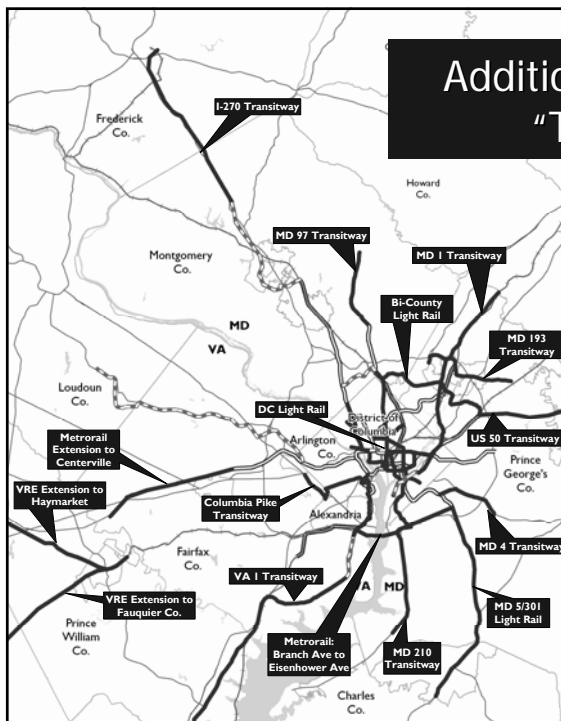
“Transit-Oriented Development” Scenario

- Locate job and household growth around transit stations

Shift 125,000 households and 150,000 jobs

17

Additional Transit for the “TOD” Scenario

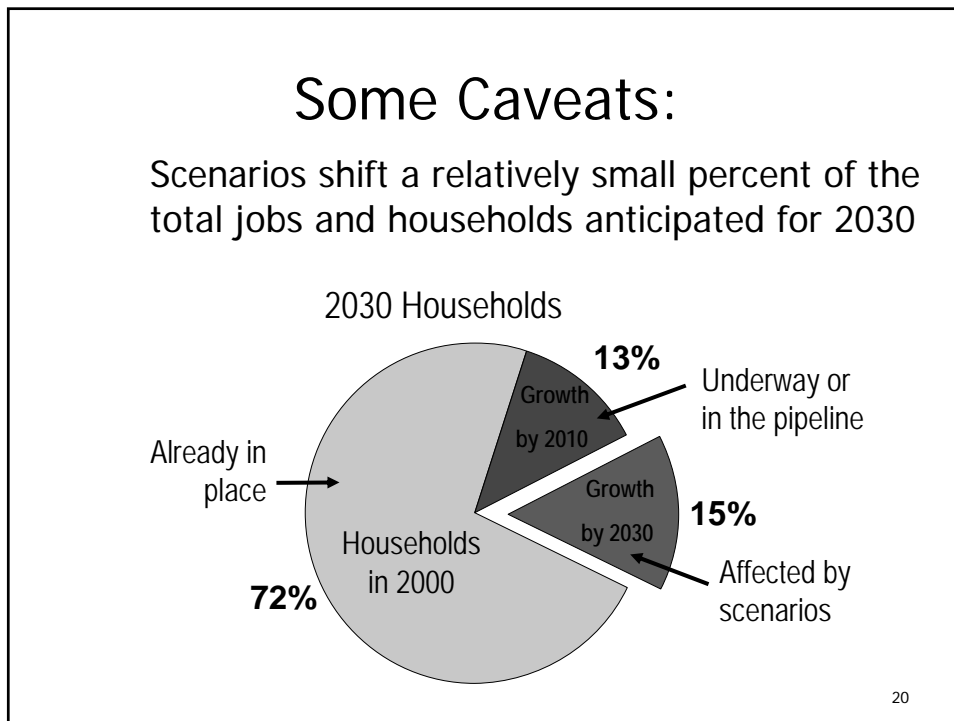
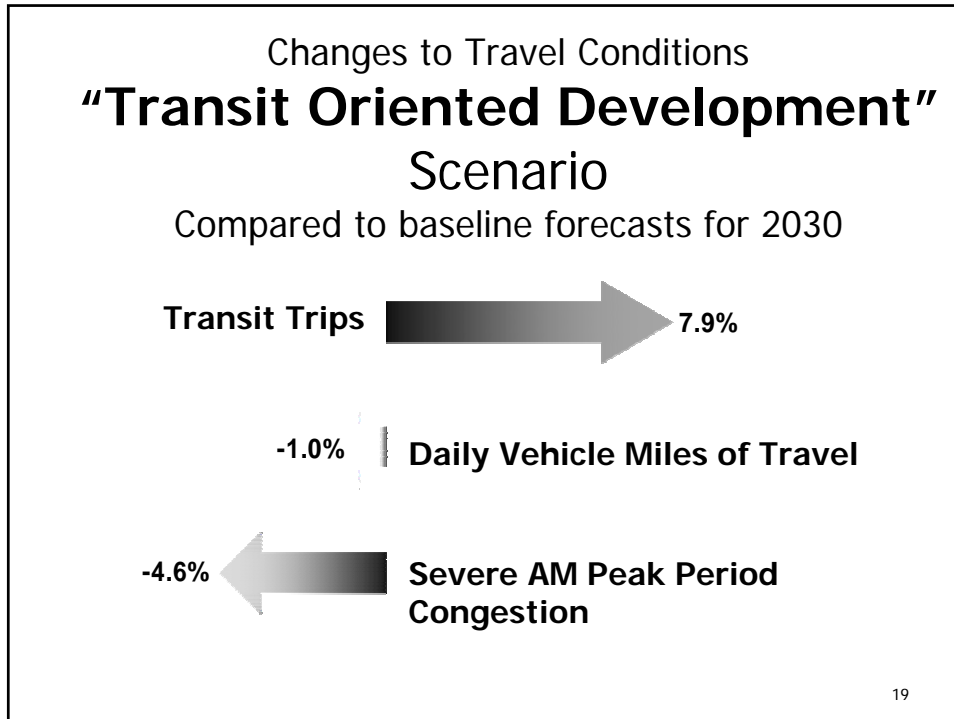


- Same transit network as “More Households” scenario

Shift 125,000 households and 150,000 jobs

— Existing Metrorail
 - - - Currently Planned Transit
 — Additional Transit in Scenario

18



Some Caveats:

- In many places, local impacts would be larger than regional numbers
- Scenarios only look out to 2030, but impacts may be greatest in 2040, 2050, and beyond

Courtesy of WMATA
21

Next Steps:

What if the region built a network of variably priced lanes?

Results expected by June 30, 2006



22

Next Steps:

What if multiple scenarios were combined?

