

## Outreach on the Regional Scenario Study



John Swanson, DTP Staff  
Presentation to the TPB Citizens Advisory Committee  
March 15, 2007

## Overview of Forum Agendas

- "Here are some regional problems."  
(Challenges underlying the study)
- "How would you deal with them?"  
(Interactive game)
- "Here's how we've addressed them."  
(Presentation on RMAS scenarios)
- "Let's discuss concerns"
  - Macro level (regional)
  - Micro level (local)



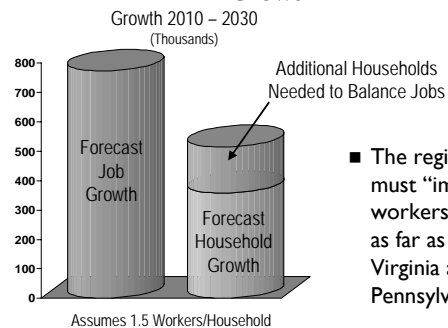
Starting Point:  
The road  
ahead isn't  
looking  
good...

What are the **key factors**  
related to land use and  
transportation that contribute to  
the region's travel congestion?

## Four "Challenges"

- Issue 1: Job growth is outpacing household growth
- Issue 2: Workers are living farther away from their jobs
- Issue 3: The East-West divide
- Issue 4: Most development will be located outside of transit station areas

### EXAMPLE SLIDE: Issue 1: Job Growth is Outpacing Household Growth



- The region must "import" workers from as far as West Virginia and Pennsylvania

## The Land Use/Transportation Game:

*How would you deal with these problems?*

## Land Use/Transportation Game



Participants create their own scenarios to address regional challenges.



## Dot Map Reports

- Tell us about your map
  - Why did you choose to put jobs and housing in some locations and not others?
  - What transportation improvements did you choose?
  - What other issues and considerations came up in your discussions?

Participants report on their scenarios.

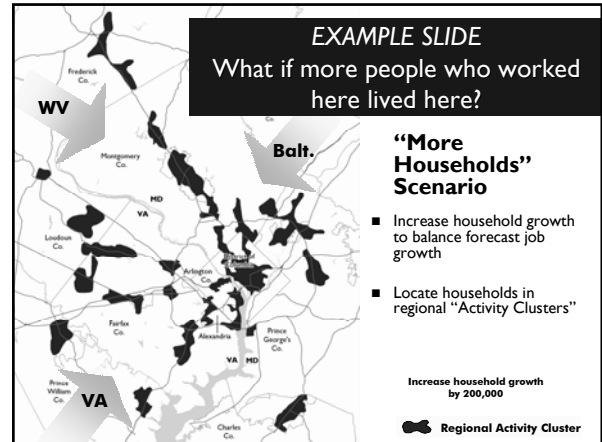


Now... We tell participants about *our* scenarios.

## Study of “What If” Scenarios

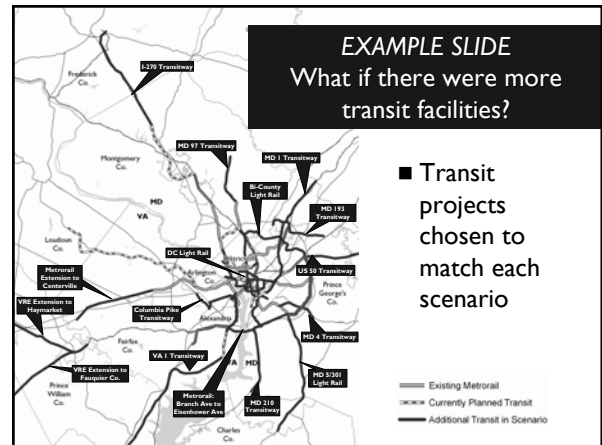
*Initiated in 2000*

- *What if* job and housing growth were shifted? *What if* new roads or transit were built?
- How would 2030 travel conditions change?
- Not looking at “how to,” just “what if.”



Under this scenario, parts of Tysons Corner would have three times more housing...

With densities like this...



**WE ALWAYS INCLUDE LOCAL EXAMPLES:**  
The scenarios include rail over the Woodrow Wilson Bridge



Rail Over the Woodrow Wilson Bridge

## What do the scenarios tell us?

*Compared to the 2030 baseline, the scenarios would:*

- Slow anticipated growth in congestion and driving.
- Increase transit use.

## But...“let’s be realistic!”

Some comments:

- The scenarios are *too extreme...*
- The scenarios are *too timid...*



## Some other concerns:

- Impacts of density
- Housing affordability & preference
- Funding
- Political will for needed changes
- Market forces
- “Is all this growth really inevitable...?”

## From “What If” to “How To”

Our next steps:

- Get public feedback
- Examine which specific changes might:
  - Have the *highest pay-offs*
  - Be most *realistic*
  - Be most *desirable*
- Work with jurisdictions to implement changes at the local level... The TLC Program.

## CAC RECOMMENDATIONS

On the Regional Mobility and  
Accessibility Scenario Study  
(RMAS)

*TPB Citizens Advisory Committee  
Presentation to the TPB  
February 21, 2007*

## CAC Goals for RMAS

- The study should be used as *a tool to influence* project selection and local land use decisions.

## CAC Goals for RMAS

- The study should be used to *raise awareness* with decision-makers and citizens about regional challenges.

### **CAC Goals for RMAS**

- The study should **effectively use public outreach** to inform future scenario planning activities, including the development of regional priorities and identification of implementation strategies.

### **CAC Recommendations for RMAS**

1. Make available the study findings, including the brochure and “What If” presentation, to elected officials and local planning efforts.

### **CAC Recommendations for RMAS**

2. Support and expand the Transportation/Land-Use Connections (TLC) program.

### **CAC Recommendations for RMAS**

3. Expand outreach to educate the public and raise awareness of regional challenges.

### **CAC Recommendations for RMAS**

4. Establish a process for gathering public input and feeding it back to the TPB for the development of refined, new or composite scenarios.

### **CAC Recommendations for RMAS**

5. Provide public-friendly information on the TPB’s variably priced lane scenario as quickly as possible.

**CAC Recommendations for  
RMAS**

6. Move forward with developing and refining scenarios.

**CAC Recommendations for  
RMAS**

7. Use the RMAS scenarios to develop a plan of regional priorities.

**CAC Recommendations for  
RMAS**

8. Develop useful analysis of existing scenarios (“drill down”) to provide more detail on which actions could be most effective.

**CAC Recommendations for  
RMAS**

9. Analyze a scenario or scenarios that assume the conversion of existing general purpose lanes to variably priced lanes.

**CAC Recommendations for  
RMAS**

10. The TPB should establish a new working group to look at future phases of and steps to implement the study.