

APPENDIX B

List of Project Inputs

Key to the Air Quality Conformity Table:

COLUMN 1:

Agency - identification of submitting agency

COLUMN 2:

Project ID - project identification number (for reference purposes)

COLUMN 3:

Type of improvement - defined as follows:

Construct	=	build a new facility
Widen	=	increase the number of lanes on an existing facility
Upgrade	=	improve the facility type of a roadway
Relocate	=	construct an existing facility on a new right-of-way
Reconstruct	=	modify an existing facility with no capacity increase i.e., shoulder paving, geometric improvements
Rehabilitate	=	repair existing structures - no capacity increase
Study	=	to review alternative transportation improvements- project planning or preliminary engineering only

COLUMN 4:

Environmental Review (NEPA) - status of the environmental review

The National Environmental Policy Act (NEPA) requires a study to determine the environmental impact of all transportation projects that involve federal approvals. The type of environmental review is determined by the scope of the project. Projects cannot be constructed until the appropriate review has been approved by federal agencies. The environmental review status in column 4 is defined as follows:

Approved	=	The project has received approval from the appropriate federal agency and may be constructed
Pending	=	The project is under study and is undergoing environmental review, or has not yet begun environmental review.
N/A	=	Projects that do not require federal approvals.

COLUMN 5:

Facility - name of facility to be studied or improved

COLUMNS 6 and 7:

From and To - limits of the project

COLUMN 8:

Facility Type - defined as follows:

- 1 = Interstate
- 2 = Major Arterial
- 3 = Minor Arterial
- 4 = Collector
- 5 = Expressway or Freeway with at-grade intersections

If a facility is being upgraded, the old facility type is in the "from" column, and the new facility type is in the "to" column. If the facility is not being upgraded, the "from" and "to" columns are the same.

COLUMN 9:

Number of Lanes - same explanation of "from" and "to " columns as above

COLUMN 10:

Currently under construction or right-of-way acquired? -

- "yes" = the facility is currently under construction and/or right-of-way has been acquired
- "no" = the facility is not currently under construction and right-of-way has not been acquired
- "completed" = the facility is open for use

COLUMN 11:

Project Completion Date or Status - date project will be open for use.
"not coded" indicates that project is not included in the conformity analysis

COLUMN 12:

In TIP - Indicates if the project is included in the TIP

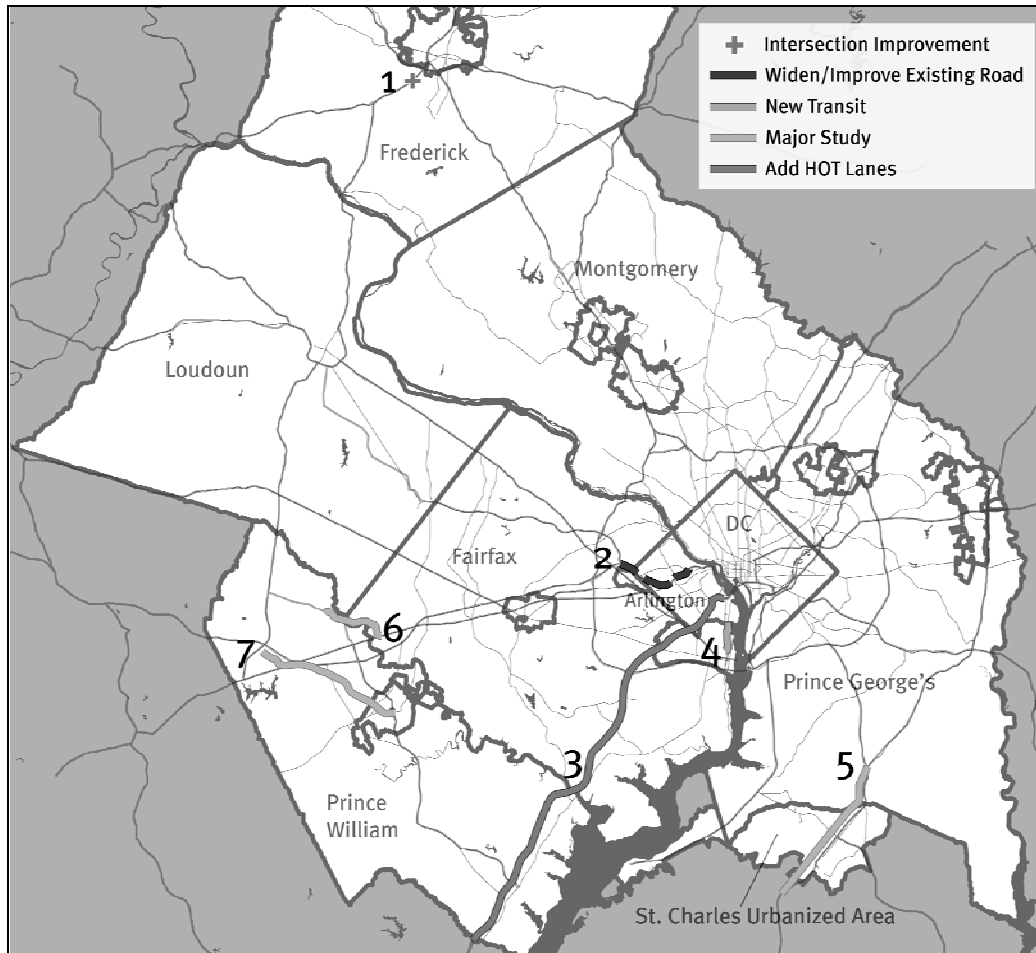
PROPOSED SIGNIFICANT CHANGES TO THE 2007 CONSTRAINED LONG-RANGE PLAN

PUBLIC COMMENT RELEASE – DECEMBER 13, 2007



This attachment provides a summary of significant changes for the new 2007 Constrained Long-Range Transportation Plan (CLRP) and changes to selected existing major projects in the CLRP. For information on all the projects in the draft 2007 CLRP, visit www.mwcog.org/clrp. Comments may be submitted at www.mwcog.org/transportation/publiccomment.

Figure 1: Significant Changes for the 2007 CLRP and the FY 2008-2013 TIP



Projects for Construction

1. US 340/US 17, construct interchange at Jefferson Tech Park, 2009
2. I-66, spot improvements inside the Beltway, 2013
3. I-95/395 HOT Lanes, widen, construct 2, 3 lanes with 14 ramps, 2010
4. Potomac Yard Transit Way, Alexandria, 2011

Studies

5. US 301 Waldorf Bypass Study
6. US-29 (Lee Hwy) Bypass around the Manassas National Battlefield Park, Study
7. VRE Extension from Manassas to Haymarket, Study

Projects for Construction

1. US 340 – Jefferson National Pike Interchange at Jefferson Technology Park

Construct a new, grade-separated interchange on US 340 to support existing and planned development at Jefferson Technology Park.

Complete: 2009
Cost: \$10.9 million
Funding: Private

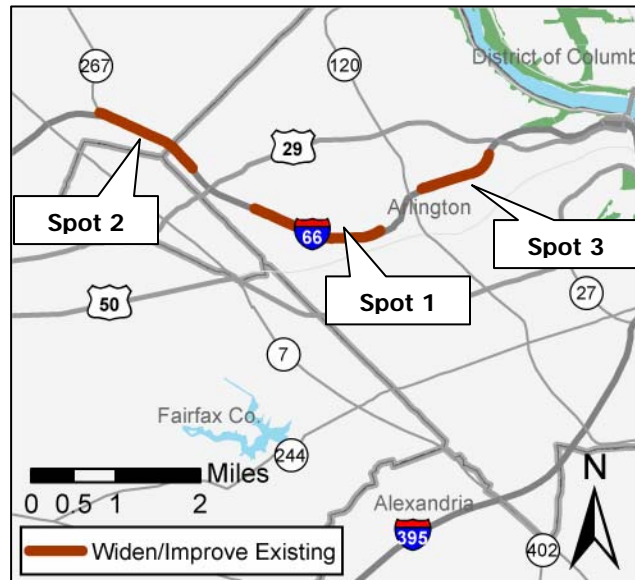


2. I-66 Spot Improvements Westbound, Inside the Beltway

Reconstruct westbound I-66, extending and connecting a series of acceleration and deceleration lanes to the following configuration:

- Spot 1 – Fairfax Drive to Sycamore Street, from 2 to 3 lanes,
- Spot 2 – Washington Boulevard to the Dulles Airport Access Road from 3 to 4 lanes, and
- Spot 3 – Lee Highway/Spout Run to Glebe Road, from 2 to 3 lanes.

Length: 4 miles (total)
Complete: 2013
Cost: \$75.6 million
Funding: Federal, State
<http://www.idea66.com>



Projects for Construction

3. I-95/I-395 HOT Lanes Project Eads Street to Garrisonville Road

Reconfigure the existing HOV facility between Eads Street in Arlington County and just south of the Town of Dumfries from 2 to 3 lanes. Convert HOV to High Occupancy Toll (HOT) lanes.

- HOV-3, transit and emergency response vehicles will use these lanes free of charge.
- Other vehicles may use the facility by paying an electronic toll.
- Tolls will vary based on time of day, day of week, and level of congestion in order to maintain free-flow conditions.

In the southbound direction, construct an extended transition lane and a new fly-over ramp, from the HOV/BUS/HOT lanes to ease congestion as traffic merges into the general purpose lanes. Create or modify a number of connections to the existing HOV lanes to improve access to the HOT lane system for HOV and transit users.

Transit Service Plan

The following enhancements to transit services are included as a part of the project:

- New bus routes
- Increased frequency of bus service on existing and new routes incrementally in 2010, 2020 and 2030.
- Addition of bus-only ramps in and out of the Pentagon at Eads St., an in-line bus station near the Lorton VRE station, and a bus-only access ramp at Seminary Rd.
- New Park & Ride facilities with a total of 3,000 additional parking spaces.

Total capital, operating, maintenance and maintenance facility costs for the Transit Service Plan are \$390 million. The proposed transit element is likely to be refined based on the findings of a detailed Transit/TDM Plan being developed by the Transit Advisory Committee (TAC).

Length: 36 miles

Complete: 2010

Capital Cost: \$882 million

\$492 million – Preliminary engineering, right-of-way acquisition, and construction

\$390 million – Transit Service Plan capital and operating costs

Funding: Private Equity, Debt (including bonds), Tolls, Federal Transit Capital and Transit Farebox Revenues

http://www.virginiadot.org/projects/ppta-I-95_I-395HOTLanes.asp



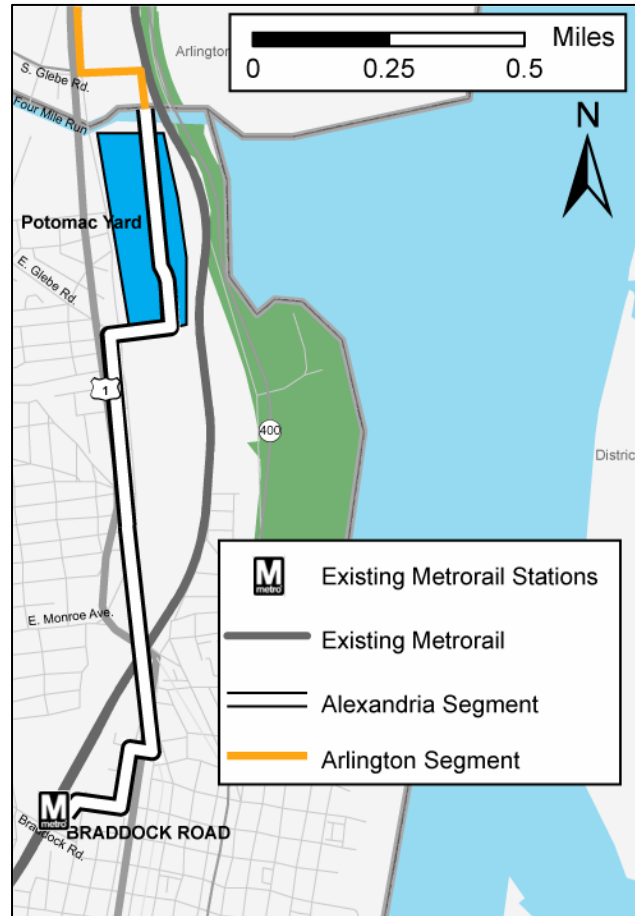
Projects for Construction

4. Potomac Yard Transitway Four Mile Run to Braddock Road Metro Station

Construct the Alexandria segment of a transitway from the Braddock Road Metro Station to the Potomac Yard Town Center and on to Four Mile Run where it will connect with the Arlington County segment that runs to the Pentagon.

Buses will travel on mixed-traffic lanes from the Braddock Road Metro Station to the Monroe Avenue Bridge. From Monroe Ave. to E. Glebe Rd., buses will travel on a dedicated transit right-of-way. From E. Glebe Rd. buses will serve the Potomac Yard Town Center and connect to the Arlington segment at S. Glebe Rd.

Length: 2.5 miles
Complete: 2011
Cost: \$18.1 million
Funding: Federal, State, Local & Private

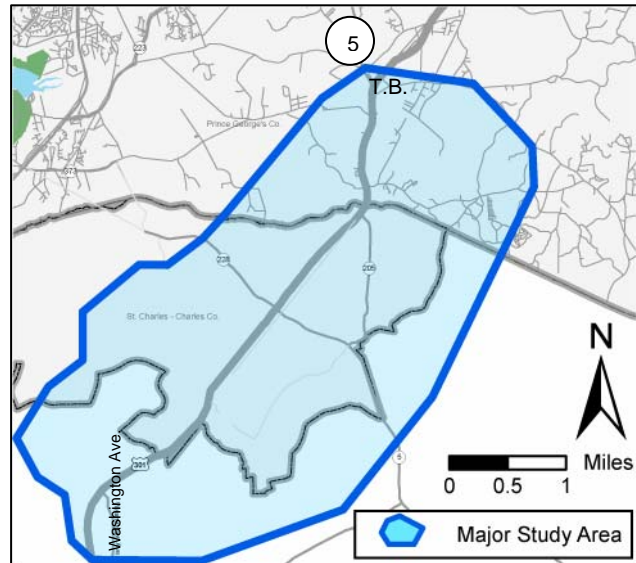


Studies

5. **US 301 – Waldorf Bypass** Washington Avenue/Turkey Hill Road to North of the MD 5 Interchange at T.B.

Study alternatives for upgrading and widening US 301 through Waldorf and/or constructing an access-controlled bypass.

Estimated Completion: 2030
Estimated Cost: \$1.5 billion (Charles
County/TPB area)
\$2.78 billion (total)
Funding: Not identified

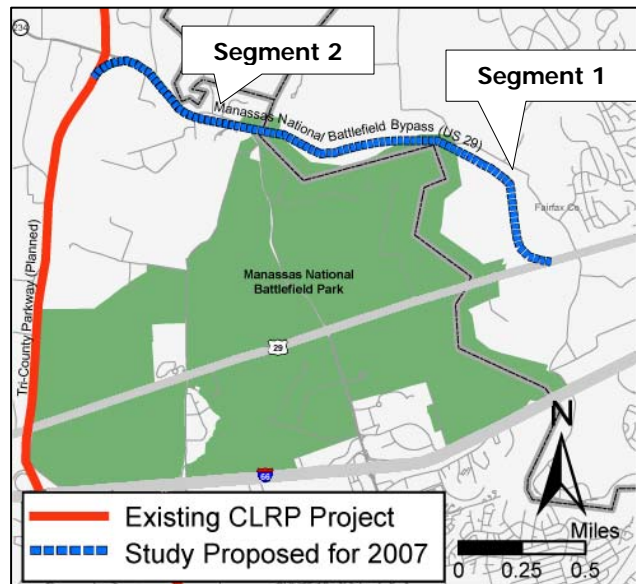


<http://www.us301waldorf.org>

6. **Manassas National Battlefield Bypass**, US 29 to Planned Tri-County Parkway/ Route 234

Close Routes 29 and 234 through the Manassas Battlefield Park to through traffic. Construct a bypass north of the park in the following segments:

- Segment 1 – Construct a new 4-lane road from US 29 east of the Park to existing VA 234 north of the Park
- Segment 2 – Widen existing VA 234 from north of the Park to the proposed Tri-County Parkway/VA 234.



Length: 8.9 miles (total)
Estimated Completion: 2020
Estimated Cost: \$133 million
Funding: Not identified

<http://www.battlefieldbypass.com>

Studies

7. VRE Expansion

City of Manassas to Gainesville and Haymarket

Preliminary engineering and environmental work to extend VRE commuter rail service to Haymarket and Gainesville.

Length:	11 miles
Estimated Completion:	2018
Estimated Cost:	\$280 million
Funding:	Not Identified

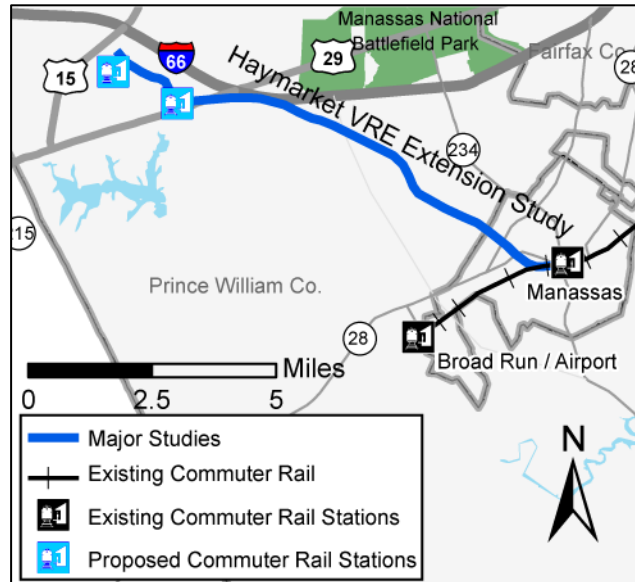


Figure 2: Changes to Selected Existing Major Projects in the CLRP

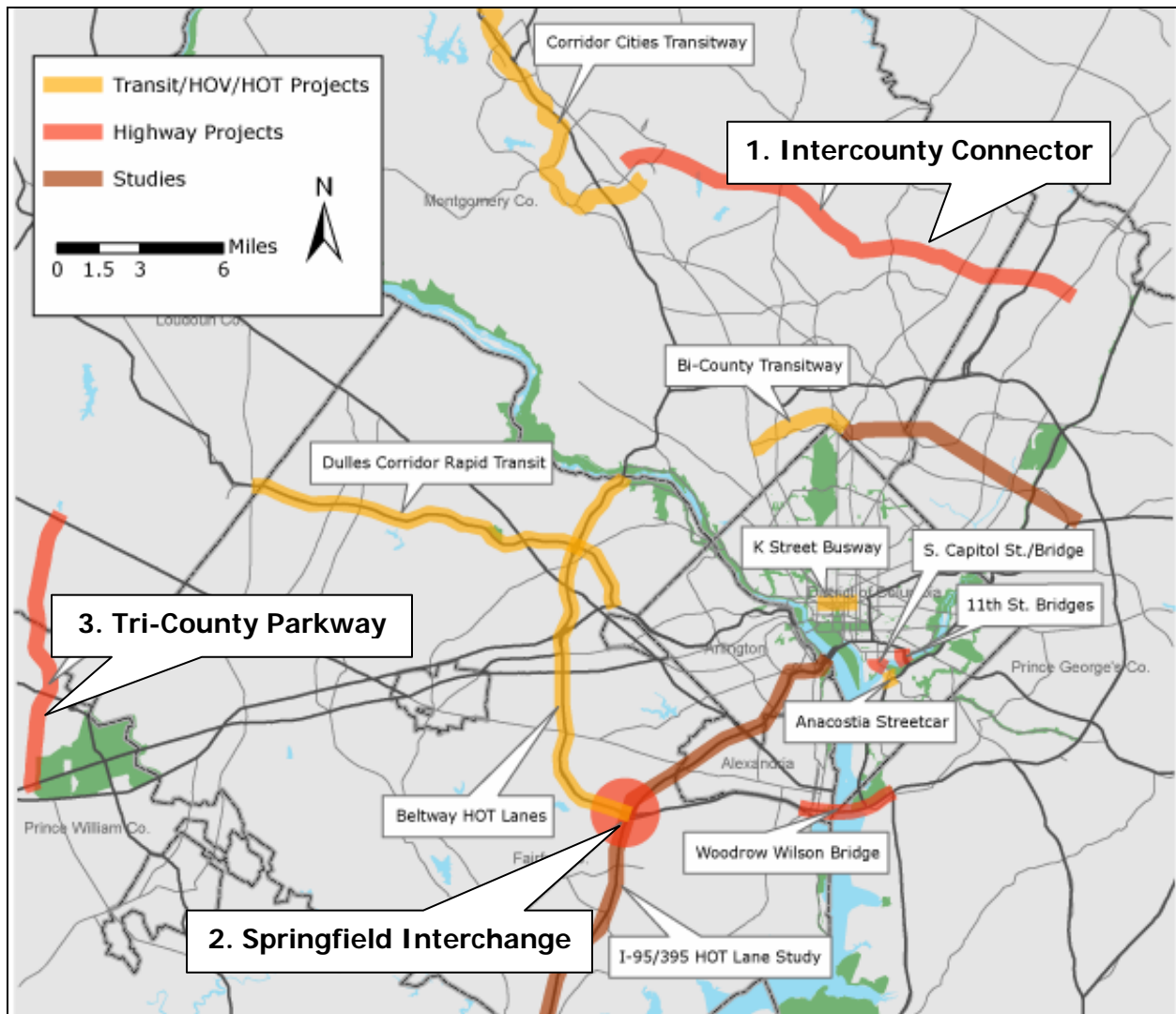
The following changes were made to three of the region's highlighted existing major projects.

Maryland

1. Intercounty Connector (ICC) – Completion date changed from 2010 to 2012

Virginia

2. Springfield Interchange – Completion date changed from 2007 to 2008
3. Tri-County Parkway – Alignment changed (revised alignment below) and completion date changed from 2020 to 2012.
4. Beltway HOT Lanes – Completion date changed from 2010 to 2013 and the project cost changed from \$899 million to \$1.5 billion.



2007 CLRP AND FY2008-2013 TIP AIR QUALITY CONFORMITY INPUTS (Transit)

Agency	Project ID	Improv.	Environ. Review	Facility	From	To	Under Const. or ROW acquired?	Complt. Date or Status	In TIP?
Washington Metropolitan Area Transit Authority									
WMATA		Modify		Revised Metrorail Operating Plan				2010	
WMATA		Modify		Revised Metrorail Operating Plan				2011	
WMATA		Modify		Revised Metrorail Operating Plan				2015	
District of Columbia									
DDOT		Construct	Pending	Anacostia Streetcar project Phase I (replaces CSX Shepherd Branch project)	Firth Sterling and S. Capitol St.	Howard Rd. and MLK Jr. Ave.		2007	
DDOT		Study	Pending	Anacostia Streetcar project Phase II (replaces CSX Shepherd Branch project)	Firth Sterling and S. Capitol St.	Malcolm X Ave.		not coded	
DDOT		Study	Pending	Anacostia Streetcar project Phase III (replaces CSX Shepherd Branch project)	Howard Rd. and MLK Jr. Ave.	Good Hope Rd. and Minnesota Ave.		not coded	
DDOT		Study	Pending	Anacostia Streetcar project Phase IV (replaces CSX Shepherd Branch project)	MLK Jr. Ave.	over 11th St. Bridge on M. St. to S. Capitol St.		not coded	
DDOT		Study		Downtown Circulator Bus System	Implementation Study			not coded	Yes
DDOT		Construct		Banneker Circle Parking	1200 spaces				
DDOT		Reconstruct		Georgia Ave. Rapid Bus (Operation Enhancements)	Eastern Ave. / Silver Spring Metro Station	Archives Navy Memorial Metro Station		2007	Yes
DDOT		Reconstruct		Pennsylvania Rapid Bus (Operation Enhancements)	Archives Navy Memorial Metro Station	Naylor Road Metrorail Station		2007	Yes
DDOT		Study		Rapid Bus Corridors	Rhode Island Ave., Military Rd.,			not coded	
DDOT		Reconstruct		K St. Busway	Mt. Vernon Sq./7th St. NW	Wash.Circle / 23rd St. NW		2008	

Note: Shaded areas represent changes from the FY2007-2012 TIP / 2006 CLRP

2007 CLRP AND FY2008-2013 TIP AIR QUALITY CONFORMITY INPUTS (Transit)

Agency	Project ID	Improv.	Environ. Review	Facility	From	To	Under Const. or ROW acquired?	Complt. Date or Status	In TIP?
Maryland									
MTA		Construct		Purple Line Transitway	Bethesda	Silver Spring		2015	Yes
MTA		Study		Purple Line Transitway	Silver Spring	New Carrollton		not coded	Yes
MTA		Construct		Silver Spring Transit Center	Phase II			2007	Yes
MTA		Construct		Corridor Cities Transitway	Shady Grove	Metropolitan Grove		2012	Yes
MTA		Construct		Corridor Cities Transitway	Metropolitan Grove	COMSAT		2020	Yes
MTA		Construct		Southern MD Commuter Bus Initiative	Park-and-Ride lots and increase bus service	in the MD 5 corridor (La Plata)		2010	Yes
MDOT		Implement		ICC Corridor Bus Service Improvements				2010	
Montgomery County									
Mont.Co.				Clarksburg Transit Center	Clarksburg			2015	No
Mont.Co.	MCT4	Construct	N/A	Four Corners Transit Center	US 29/MD 193		No	2015	No
Mont.Co.				Metropolitan Grove Transit Center	Vicinity of Watkins Mill Road and MD 117			2015	No
Mont.Co.	MCT16			NIH Naval Medical Transportation Management	Bethesda				No
Mont.Co.				Norbeck Road Bus Enhancement				2020	No
Mont.Co.				Norbeck Road Park and Ride	Norbeck Road at Georgia Avenue			2015	Yes
Mont.Co.	MCT7	Construct	N/A	Olney Transit Center	adjacent to or north of MD 108		No	2015	No
Mont.Co.				Randolph Road Bus Enhancement				2010	No
Mont.Co.		Construct		University Blvd Bus Enhancement	Kensington	Silver Spring	No	2020	No

2007 CLRP AND FY2008-2013 TIP AIR QUALITY CONFORMITY INPUTS (Transit)

Agency	Project ID	Improv.	Environ. Review	Facility	From	To	Under Const. or ROW acquired?	Complt. Date or Status	In TIP?
Mont.Co.	MCT22	Construct		Veirs Mill Road Bus Enhancement	Rockville	Wheaton	No	2020	No
Virginia									
VDOT		Widen	Pending	US 1 (bus/right-turn lanes)	VA 235 North	SCL Alexandria (I-95 Capital Beltway)	No	2025	No
VDOT		Study	Pending	Circumferential Metro Rail	Dunn Loring	American Legion Bridge	No	not coded	No
Arlington Co.		Construct	Pending	Crystal City / Potomac Yard Busway (2-lane) Segment 1	Vicinity of Glebe Rd. Ext.- City/County line	26th St. South	No	2008	Yes
Arlington Co.		Construct	Pending	Crystal City / Potomac Yard Busway (2-lane) Segment 2	26th St. South	Crystal City Metro Station	No	2009	Yes
Arlington Co.		Upgrade	Pending	Crystal City / Potomac Yard Busway to BRT	Vicinity of Glebe Rd. Ext.	Crystal City Metro Station	No	2012	Yes
VDOT		Study		Alexandria Bus Lanes Citywide- 3 corridors			No	not coded	No
VDOT		Construct	Pending	Potomac Yard Transit Bus lanes (2 lanes)	Four Mile Run	Braddock Rd.	No	2011	Yes
VDOT		Study	Pending	US 1 Priority Bus	SCL Alexandria (I-95 Capital Beltway)	King Street Metro Station	No	not coded	No
VDOT		Study	Pending	US 1 Priority Bus	Stafford County	SCL Alexandria (I-95 Capital Beltway)	No	not coded	No
VDOT		Study		US 1 Transit Service Improvements	Stafford County Line	Pentagon		not coded	No
VDOT		Study	Pending	I-495 Transit Improvements	Woodrow Wilson Bridge	American Legion Bridge	No	not coded	No
VDOT		Study	PCE-1	I-66 & I-95 corridors	Location /Feasibility Studies for Addl. PnR Lots		Yes	not coded	No
VDOT		Study	Pending	I-66 Transit Service Improvements	Metro Stations inside I-495	Underserved locations inside I-495	No	not coded	No
VDOT		Study	Pending	I-66 Transit Service Improvements	Fauquier County Line	Vienna	No	not coded	No
VDOT		Study	Pending	I-95 Corridor Metro Rail Extension	Lorton/Fort Belvoir	Potomac Mills Mall	No	not coded	No
VDOT		Study	Pending	I-95 Corridor Metro Rail Extension	Franconia-Springfield	Lorton/Fort Belvoir	No	not coded	No

2007 CLRP AND FY2008-2013 TIP AIR QUALITY CONFORMITY INPUTS (Transit)

Agency	Project ID	Improv.	Environ. Review	Facility	From	To	Under Const. or ROW acquired?	Complt. Date or Status	In TIP?
VDOT		Study	Pending	Light Rail	Manassas	Dulles Airport	No	not coded	No
VDOT		Construct	Pending	Metro Station (Proposed)	@ Potomac Yards		No	2030	No
VDOT		Study	Pending	Proposed EPG People Mover	Fort Belvoir	Franconia/Springfield	No	not coded	No
VDOT		Study	Pending	US 50 Transit Service Improvements	Eastern Loudoun County	Arlington County	No	not coded	No
VDOT		Study	Pending	VA 236 Priority Bus	City of Fairfax	City of Alexandria	No	not coded	No
VDOT		Study	Pending	VA 244 (Columbia Pike) Transit Service Improvements	Baileys Crossroads	Pentagon	No	not coded	No
VDOT		Study	Pending	VA 7 Transit Service Improvements	Tysons Corner	Baileys Crossroads	No	not coded	No
VDOT		Study	Pending	VA 7100 Priority Bus	US 1	VA 7	No	not coded	No
VDOT		Construct	Pending	Transit Center (Reston)	Reston Town Center	@ Explorer Dr. & Bluemont Way	Complete	2006	Yes
VDOT		Construct	Pending	Transit Center (Bradlee Shopping Center)	King St. and Braddock Rd.		No	2008	Yes
VDOT		Construct	Pending	Transit Center (Seven Corners)	Seven Corners Shopping Center		No	2008	Yes
VDOT		Construct	Pending	Park-and-Ride Lot	Reston East Parking Structure	@ Reston East Park-and-Ride Lot	No	2011	Yes
VDOT		Construct	Pending	Park-and-Ride Lot	VA 7900 (F-S Pkwy.) PnR	@ Gambrill Road Location	Complete	2006	Yes
VDOT		Construct	N/A	Park-and-Ride Lot	Dulles Corridor Park-and-Ride Lots	Reston East at Wiehle Ave & Herndon-Monroe P & R Lots	Complete	2006	Yes
VDOT		Construct	Pending	Park-and-Ride Lot	VA 7900 (F-S Pkwy.) PnR	@ Backlick Road North	yes	2007	Yes
VDOT		Reconstruct	N/A	Park-and-Ride Lot Enhancements	@ Reston, Centreville, West Springfield		Complete	2006	Yes
VDOT		Construct	Pending	Park-and-Ride Lot	Springfield CBD	vic. I-95 & Old Keene Mill Road	No	2011	Yes

2007 CLRP AND FY2008-2013 TIP AIR QUALITY CONFORMITY INPUTS (Transit)

Agency	Project ID	Improv.	Environ. Review	Facility	From	To	Under Const. or ROW acquired?	Compl. Date or Status	In TIP?
VDOT		Relocate/Co	Pending	Park-and-Ride Lot (Leesburg)	Relocate to vic. of Leesburg Bypass	VA 7, and / or the Dulles Greenway	Yes	2007	Yes
VDOT		Construct	Pending	Park-and-Ride Lot	Purcellville	100-space park-and-ride lot.	Complete	2006	Yes
VDOT		Construct		Town of Leesburg -Harrison St & Catocin Circle	Loudoun County Commuter Bus Service.	400 Space Park & Ride Lot		2007	No
VDOT		Construct		VA 772 (Ryan) Station	Loudoun County Commuter Bus Service.	300 Space Park & Ride Lot		2008	No
VDOT		Construct		Park-and-Ride Lot	Dulles Town Center	100 spaces	Proffered	2006	
VDOT		Construct		Park-and-Ride Lot	VA 643 east of Leesburg	700 spaces	No	2009	
VDOT		Construct		Park-and-Ride Lot	US 50 at Stone Ridge	250 spaces	Proffered	2006	
VDOT		Construct		Park-and-Ride Lot	US 50 Dulles			2009	
VDOT		Construct	pending	Park-and-Ride Lot	VA 234 (vicinity of I-66)		No	2009	Yes
VDRPT		Construct	Complete	Dulles Corridor Metrorail	East Falls Church Metrorail Station	Wiehle Ave.	No	2011	Yes
VDRPT		Construct	Complete	Dulles Corridor Metrorail	Wiehle Ave. Station	Route 772	No	2015	Yes
VRE		Construct	Pending	VRE - Cherry Hill Commuter Rail Station	Cherry Hill	Prince William County	No	2010	Yes
VRE		Implement	Pending	Service Improvements (Reduce Headways)	Fredericksburg and Manassas lines		No	2010	No
VRE		Study		VRE Extension	Manassas	Gainesville (spurline)	No	not coded	No
		Implement		Beltway HOT lanes transit service			No	2013	
		Implement		Beltway HOT lanes transit service			No	2020	
		Implement		Beltway HOT lanes transit service			No	2030	

Note: Shaded areas represent changes from the FY2007-2012 TIP / 2006 CLRP

2007 CLRP AND FY2008-2013 TIP AIR QUALITY CONFORMITY INPUTS (Transit)

Agency	Project ID	Improv.	Environ. Review	Facility	From	To	Under Const. or ROW acquired?	Complt. Date or Status	In TIP?
VDOT		Implement		I-95/I-395 HOV /BUS / HOT lanes transit service			No	2010	
VDOT		Implement		I-95/I-395 HOV /BUS / HOT lanes transit service			No	2020	
VDOT		Implement		I-95/I-395 HOV /BUS / HOT lanes transit service			No	2030	

2007 CLRP AND FY2008-2013 TIP AIR QUALITY CONFORMITY INPUTS (Highway and HOV)

Agency	Project ID	Improv.	Environ. Review	Facility	From	To	Facility		Lanes		Under Const. or ROW acquired?	Complt. Date or Status	In TIP?
							from	to	from	to			
District of Columbia													
DDOT				New York Avenue	Bladensburg Road							beyond 2010	Yes
DDOT				New York Avenue	Florida Avenue							beyond 2010	Yes
DDOT		Study		South Capitol Street	Independence Avenue	Frederick Douglass Memorial Bridge						not coded	Yes
DDOT				Southeast/Southwest Frwy Reversible Lanes	14th Street Bridges	Pennsylvania Ave. SE							Yes
DDOT	nrs	Study		Southern Avenue	Naylor Road	Erie Street						not coded	Yes
DDOT		Construct		Foxhall Road, N.W.	W Place	Calvert Street						2003	Yes
DDOT		Construct		Klinge Road Reconstruction	Porter Street	Woodley Road						2007	Yes
DDOT		Construct		Minnesota Ave. NE ext.	Sheriff Rd	Meade St. N.E.						2009	Yes
DDOT		Study		Whitehurst Fwy/Roosevelt Bridge	Porter Street	Woodley Road						not coded	Yes
DDOT	DP9A	Widen / Realign		South Capitol St. Corridor: Frederick Douglass Bridge			2	2	5	6		2015	
DDOT	DP9B	Widen		South Capitol St. Corridor: S. Capitol St.	O St.	S. Capitol St. Bridge	2	2	5	6		2015	
DDOT	DP9C	Construct		South Capitol St. Corridor: S. Capitol St. intersection	at Potomac Ave.							2015	
DDOT	DP9D	Construct		South Capitol St. Corridor: Suitland Parkway Intch.	at MLK Jr. Blvd to complete movements							2015	
DDOT	DI7A	Reconstruct/Widen		11th St. Bridges (2 spans)					8	4	8 freeway 4 local	2011	
DDOT	DI7A	Construct		11th St. Bridges (2 spans)	ramp movements to/from the northbound Anacostia Freeway for each span							2011	
DDOT		Study		I-295 Interchange	at Malcolm X Blvd							not coded	

2007 CLRP AND FY2008-2013 TIP AIR QUALITY CONFORMITY INPUTS (Highway and HOV)

Agency	Project ID	Improv.	Environ. Review	Facility	From	To	Facility		Lanes		Under Const. or ROW acquired?	Compl. Date or Status	In TIP?
							from	to	from	to			
							Maryland						
MDOT Freeway													
MDSHA	MI2q	Construct	Approved	I-270	Interchange at Watkins Mill Road Extended		1	1	8	8+2	No	2020	Yes
MDSHA	MI2SHOV MI2S	Construct	Pending	I-270/US 15 Corridor	Shady Grove Metro	I-70	1	1	varies		No	2020	Yes
MDSHA		Reconstruct	Pending	I-270	Interchange at MD 121		1	1	1	2	No	2010	Yes
MDSHA	MI4	Widen	Approved	I-70	Mount Phillip Road	MD 144FA	1	1	4	6	No	2010	Yes
MDSHA	MI1f	Construct	Pending	I-95	Contee Road Relocated w/ CD Roads		1	1	8	8+4	No	2020	Yes
MDSHA	MI1k	Construct	Approved	I-95/I-495 (Capital Beltway)	Branch Avenue Metro Access (Phases I & II)		1	1	8	8	Yes	2009	Yes
MDSHA	MI1p	Construct	Approved	I-95/I-495 (Capital Beltway)	Interchange at Greenbelt Metro		1	1	8	8+2	No	2010	Yes
MDSHA	VA	Widen	Approved	I-95/I-495 Woodrow Wilson Bridge (see Virginia listing)	MD 210 Interchange	Virginia Line	1	1	6	12	Yes	2008	Yes
MDSHA	MI1m	Construct	Approved	I-95/I-495/Arena Drive Interchange	MD 214	MD 202	1	1	8	8+2	Yes	2009	Yes
MDSHA	MI1a	Study	Pending	I-95/I-495 (Capital Beltway)	American Legion Bridge	Woodrow Wilson Bridge	1	1	6	6+4	No	not coded	Yes
MDSHA	MP12	Construct	Approved	Intercounty Connector	I-270	I-95 / US 1	0	1	0	6	Yes	2012	Yes
MDOT Primary													
MDSHA	MP10a	Reconstruct	Approved	US 1 (Baltimore Avenue)	College Avenue	Cherry Hill Road	2	2	4	4	No	2020	Yes
MDSHA	MP10b	Widen	Approved	US 1, Baltimore Avenue	Cherry Hill Road	I-95/I-495	2	2	4	6	No	2010	Yes
MDSHA	MP9b	Construct	Pending	MD 2/4 at Lusby Southern Conn. Rd.	MD 765	MD 2/4 at Lusby	0	2	0	3	No	2010	No
MDSHA	MP9c	Construct	Approved	MD 2/4	MD 231 Intersection Improvs.		2	2	4	6+2	No	2010	No
MDSHA	MP2c	Construct	Pending	MD 3 (Robert Crain Highway)	US 50	Anne Arundel County Line	2	2	4	6	No	2020	Yes

2007 CLRP AND FY2008-2013 TIP AIR QUALITY CONFORMITY INPUTS (Highway and HOV)

Agency	Project ID	Improv.	Environ. Review	Facility	From	To	Facility		Lanes		Under Const. or ROW acquired?	Complt. Date or Status	In TIP?
							from	to	from	to			
MDSHA		Construct	Approved	MD 4 (Pennsylvania Avenue)	Interchange at Westphalia Rd		2	5	4	6	No	2010	Yes
MDSA		Construct	Approved	MD 4 (Pennsylvania Avenue)	Interchange at Suitland Pkwy		2	5	4	6	No	2011	Yes
MDSHA	MP3a	Upgrade/ Widen	Approved	MD 4	MD 223	I-95/I-495	2	5	4	6	No	2020	No
MDSHA		Construct	Approved	MD 5 (Branch Avenue)	Interchange at Earnshaw/Burch Hill Roads		2	5	4	6	No	2010	No
MDSHA	MP4f	Upgrade/ Widen	Approved	MD 5 (Branch Avenue)	US 301 at T.B.	North of the Capital Beltway	2	5	4	6	No	2030	Yes
MDSHA		Construct	Approved	MD 5 (Branch Avenue)	Interchange at MD 373/Brandywine Road Rel.		2	5	4	6	No	2010	No
MDSHA		Construct	Approved	MD 5 (Branch Avenue)	Interchange at Surratts Road		2	5	4	6	No	2010	No
MDSHA	MP4k	Construct	Approved	MD 5 Relocated at Hughesville	End of divided highway south of Hughesville	End of divided highway north of Hughesville	2	2	3	3	Yes	2007	No
MDSHA		Construct	Approved	US 15 Catoctin Mountain Highway	MD 26 Liberty Road		2	2	4	4	Complete?	2006	Yes
MDSHA	MP15	Reconstruct	Pending	US 15 Catoctin Mountain Highway	@ Monocacy Blvd		1	1	4	4	No	2010	Yes
MDSHA		Upgrade	Approved	US 29 (Columbia Pike)	Musgrove/Fairland Road		2	5	6	6	No	2010	Yes
MDSHA		Upgrade	Approved	US 29 (Columbia Pike)	MD 198		2	5	6	6	Complete	2005	Yes
MDSHA		Upgrade	Approved	US 29 (Columbia Pike)	Briggs Chaney Road		2	5	6	6	Yes	2006	Yes
MDSHA		Upgrade	Approved	US 29 (Columbia Pike)	Randolph Road		2	5	6	6	Complete	2005	Yes
MDSHA		Upgrade	Approved	US 29 (Columbia Pike)	Stewart Lane, Tech Rd., Greencastle Road, and Blackburn Road		2	5	6	6	No	2020	Yes
MDSHA	MP5a	Upgrade	Approved	US 29 (Columbia Pike)	Sligo Creek Parkway	south of MD 193	2	5	6	6	No	2020	No
MDSHA	MP5c	Upgrade	Approved	US 29 (Columbia Pike)	north of MD 193	south of MD 650	2	5	6	6	No	2020	No
MDSHA	MP5e	Upgrade	Approved	US 29, Columbia Pike	north of MD 650	Howard County Line	2	5	6	6	No	2020	No

2007 CLRP AND FY2008-2013 TIP AIR QUALITY CONFORMITY INPUTS (Highway and HOV)

Agency	Project ID	Improv.	Environ. Review	Facility	From	To	Facility		Lanes		Under Const. or ROW acquired?	Complt. Date or Status	In TIP?		
							from	to	from	to					
							MDSHA		Construct	N/A				MD 75 Relocated	MD 80
MDSHA	FP1B	Construct	N/A	MD 80/MD 355 Relocated	South of Urbana	North of Urbana			0	2	0	4	Yes	2005	No
MDSHA	FP2	Widen	Approved	MD 85 (Buckeystown Pike)	English Muffin Way	north of Grove Road			2	2	2/4	4/6	No	2020	Yes
MDSHA	MP12c	Construct	Approved	MD 97 (Brookeville Bypass)	South of Brookeville	North of Brookeville			0	2	0	2	No	2015	Yes
MDSHA		Upgrade	Approved	MD 97 (Georgia Avenue)	interchange @ MD 28 (Norbeck Road)				2	2	6	6	No	2010	Yes
MDSHA		Upgrade	Approved	MD 97 (Georgia Avenue)	interchange @ Randolph Road				2	2	6	6	No	2010	Yes
MDSHA	MP14	Reconstruct	Approved	MD 202 (Largo Town Ctr. Metro Access Improvs.)	north of Brightseat Rd	South of Technology Way			2	2	6	6	No	2010	Yes
MDSHA	MP6d	Upgrade	Approved	MD 210 (Indian Head Highway) with interchange improvements at: Wilson Bridge Dr., Livingston Rd./Kerby Hill Rd., Livingston Rd./Palmer Rd., Old Fort Rd. North, Ft. Washington Rd., and Livingston Rd./Swan Creek Rd. Intersections	MD 228	Capital Beltway			2	5	6	6	No	2030	Yes
MDSHA	MP8e	Widen	Pending	US 301	North of Mount Oak Road	US 50			2	5	4/6	6+2	No	2020	Yes
MDSHA	MP8a	Study	Pending	US 301 South Corridor Transportation Study	South of La Plata	Mount Oak Road			2	5	4	4/6	No	not coded	Yes
MDSHA		Study	Pending	US 301 Waldorf Bypass	Turkey Hill Rd. in Charles Co. @US 340 at Jefferson Tech Park	N. of US 301/MD 5 at TB			2	5	4	4/6	No	not coded	Yes
MDSHA	MP16	Construct	Pending	US 340 Interchange					1	1	4	4	No	2009	No
MDSHA		Construct	Approved	MD 355	Montrose/Randolph Rds.	CSX RR			2	2	6	6	No	2010	Yes
MDSHA		Reconstruct		MD 450	CSX grade separation at Peace Cross				2	2	4	4	Yes	2008	Yes
MDTA		Study	Pending	US 301 Governor Harry Nice Bridge									No	not coded	No

2007 CLRP AND FY2008-2013 TIP AIR QUALITY CONFORMITY INPUTS (Highway and HOV)

Agency	Project ID	Improv.	Environ. Review	Facility	From	To	Facility		Lanes		Under Const. or ROW acquired?	Complt. Date or Status	In TIP?
							from	to	from	to			
							MDOT Secondary						
MDSHA	MS33	Widen	N/A	MD 27	MD 355	A 305	2	2	4	6	Yes	2006	No
MDSHA	MS3d	Widen	Approved	MD 28 (Darnestown Road)	Riffle Ford Road	Great Seneca Highway (MD 119)	3	3	2	4/6	Complete	2004	Yes
MDSHA	MS3e	Construct	Pending	MD 28/Rockville Twn. Ctr. Interchanges	MD 586/MD 911		3	3	2	4	No	2030	Yes
MDSHA	MS2f	Construct	Pending	MD 28 (Norbeck Road) / MD 198 (Spencerville Road)	MD 97	I-95	2	2	2/4	4/6	No	2020	Yes
MDSHA	MS32	Widen	Approved	MD 117	I-270	Seneca Creek State Park	2	2	2	4	No	2010	Yes
MDSHA	MS34	Widen	N/A	MD 121	I-270	W. Old Baltimore Rd.	3	3	4	6	No	2010	No
MDSHA	MS6b	Widen	Approved	MD 124 (Woodfield Road)	Midcounty Highway	S. of Airpark Dr.	2	2	2	6	No	2015	Yes
MDSHA	MS6c	Widen	Approved	MD 124 (Woodfield Road)	S. of Airpark Dr.	N. of Fieldcrest Rd.	2	2	2	6	No	2010	Yes
MDSHA	MS6d	Widen	Approved	MD 124 (Woodfield Road)	N. of Fieldcrest Rd.	Warfield Road	2	2	2	6	No	2015	Yes
MDSHA	MS10a	Study	Pending	MD 201 Extended / US 1	I-95/I-495	MD 198	0	2	0	4-6	No	not coded	Yes
MDSHA	MS10b	Widen	N/A	MD 201 (Kenilworth Ave.) MD 212 Relocated	Rittenhouse Road	Pontiac St.	2	2	4	6	No	2020	No
MDSHA	PGS6	Construct	Approved	(Ammendale/Virginia Manor)	US 1	I-95	3	2	2	4	Yes	2007	Yes
MDSHA	MS30	Widen/ Construct	Approved	MD 414 Extended	MD 210	I-295	0	3	0	4	Yes	2008	Yes
MDSHA	MS18d	Widen	Approved	MD 450 (Annapolis Road)	Stonybrook Drive	West of MD 3	2	2	2	4	No	2020	No
MDSHA	MS18i	Widen	Approved	MD 450 (Annapolis Road)	Whitfield Chapel Road	Seabrook Road	2	2	2	5	Complete	2005	Yes
MDSHA	MS18h	Widen	Approved	MD 450 (Annapolis Road)	MD 193	Stonybrook Drive	2	2	2	4/6	Complete	2005	Yes
MDSHA	MS20c	Construct	Approved	MD 475 (East Street Extended)	South Street	proposed Monocacy Boulevard	0	3	0	4	Yes	2010	Yes
MDSHA		Study	Pending	UM Connector	I-95/I-495 Interchange	University of Maryland campus	0	0	0	0	No	not coded	Yes

2007 CLRP AND FY2008-2013 TIP AIR QUALITY CONFORMITY INPUTS (Highway and HOV)

Agency	Project ID	Improv.	Environ. Review	Facility	From	To	Facility		Lanes		Under Const. or ROW acquired?	Compl. Date or Status	In TIP?
							from	to	from	to			
							Montgomery County						
Mont.Co.	MC11b	Construct	N/A	A-305 - MidCounty Highway Extended	Stringtown Road	MD 27 (Ridge Road)	0	3	0	4	No	2010	No
Mont.Co.	MC11c	Construct	N/A	A-305 - MidCounty Highway Extended	MD 355	Stringtown Road	0	3	0	2	No	2010	No
Mont.Co.	nrs	Construct		Burtonsville Access Rd.	MD 198	School Success Rd.	0	4	0	2		2009	Yes
Mont.Co.	nrs			Century Blvd./Crystal Rock Loop	existing Century Blvd.	Crystal Rock Drive		3		4	No	2008	No
Mont.Co.	nrs	Construct		Chapman Avenue	Randolph Road	Old Georgetown Road	0	3	0	2	No	2010	No
Mont.Co.	MC38a	Construct		Citadel Avenue Extended	dead end of existing road south of Marinelli Road	Nicholson Lane	0	4	0	2	No	2008	Yes
Mont.Co.	MC44	Widen		Fairland Rd.	US 29	Briggs Chaney Rd.	3	3	2	3	No	2008	Yes
Mont.Co.	MC5d	Construct		Father Hurley Blvd.	Wisteria	MD 118 Relocated	0	2	0	4	No	2010	Yes
Mont.Co.	MC5c	Widen		Father Hurley/ Ridge Rd.	I-270	existing MD 27	2	2	4	6	No	2010	No
Mont.Co.	MC7a	Widen		Goshen Rd. Fac. Planning	Odenhal Avenue.	Warfield Road	3	3	2	4	No	2015	No
Mont.Co.	MC7b	Construct		Goshen Rd. Fac. Planning	Warfield Road	Brink Road	0	3	0	2	No	2012	No
Mont.Co.	MC43	Construct		I-4 Bridge over I-270	Century Boulevard	Milestone Center Drive	0	3	0	4	No	2015	No
Mont.Co.	MC41	Widen		Longdraft Road	MD 124	MD 117	3	3	2	4	No	2015	No
Mont.Co.		Study		M-83 (with MD 118 Ext. and Middlebrook Rd. Ext. widening projects below)	MD 27 (Ridge Road)	Montgomery Village Avenue	0	2	0	4-6	No	2006 for study	No
Mont.Co.	MC11a	Construct		M-83 - Midcounty Highway Extended	MD 27 (Ridge Road)	Middlebrook Road	0	2	0	4-6	No	2020	No
Mont.Co.	MC11d	Construct		M-83 - Midcounty Highway Extended	Middlebrook Road	Montgomery Village Avenue	0	2	0	4-6	No	2020	No
Mont.Co.	MC12f	Widen		MD 118 Ext (Grmntwn. Rd.)	MD 355	M-83/Watkins Mill Rd.	2	2	3	6	No	2020	No

2007 CLRP AND FY2008-2013 TIP AIR QUALITY CONFORMITY INPUTS (Highway and HOV)

Agency	Project ID	Improv.	Environ. Review	Facility	From	To	Facility		Lanes		Under Const. or ROW acquired?	Complt. Date or Status	In TIP?
							from	to	from	to			
Mont.Co.	MC14g	Widen		Middlebrook Road Ext. Widening	MD 355	M-83	2	2	3	6	No	2015	No
Mont.Co.	MC15b	Construct		Montrose Parkway East Fac. Planning	Parklawn Drive	MD 586 - Veirs Mill Road	0	2	0	4	No	2015	No
Mont.Co.	MC15	Construct	N/A	Montrose Parkway West	Montrose Road (Tower Oaks Blvd.)	old' Old Georgetown Road	0	2	0	4	No	2008	No
Mont.Co.	MC30	Construct		Nebel St Extended	Randolph Rd	Target Store Site	0	3	0	4		2010	Yes
Mont.Co.	MC18a	Widen	N/A	Norbeck Rd. Ext.	MD 28	MD 198	3	3	2	4	No	2020	No
Mont.Co.	nrs	Construct		Observation Drive Extended	existing terminus	MD 355 Bypass	0	3	0	2	No	2020	No
Mont.Co.	MC42	Construct		Randolph Road	Parklawn Drive	Rock Creek Park	2	2	4	5	No	2010	No
Mont.Co.	MC34	Widen		Snouffer School Rd. Fac. Planning	Goshen Rd.	MD 124	3	3	2	4	No	2015	No
Mont.Co.	MC28a	Widen	N/A	Stringtown Rd. Ext.	MD 355	Piedmont Road	3	3	2	4	No	2015	No
Mont.Co.	MC28	Construct	N/A	Stringtown Rd. Ext.	I270/ MD 121 int.	existing Stringtown Rd. @ MD 355	0	3	0	4	No	2007	Yes
Mont.Co.	MC22	Construct		Valley Park Dr.	e.of MD 27	exist. Valley Park Dr.	0	3	0	2	Complete	2006	Yes
Mont.Co.	MC23a	Construct		Watkins Mill Rd. ext.	Md 117	MD 355	0	3	0	4	No	2015	No
Mont.Co.	MC13	Construct		Woodfield Rd.(MD 124 Ext.)	1200' North of MD 108	MD 27	0	2	0	2		2009	Yes
Prince Georges County													
PG Co.	PGS3a	Widen	N/A	Addison Road	MD 214	Walker Mill Road	3	3	2	4	Yes	2014	No
PG Co.		Reconstruct	N/A	Addison Road	Sheriff Road	MD 704	4	4	2	2	Yes	2014	
PG Co.	PGS5	Construct	N/A	Allentown Road Relocated	Indian Head Highway (MD 210)	Brinkley Road	0	3	0	4	No	2025	No
PG Co.	PGS6	Widen	N/A	Ammendale/Virginia Manor Road	I-95	west of US 1	3	3	2	6	Yes	2008	Yes
PG Co.	PGS73	widen	N/A	Ardwick-Ardmore Road	MD 704	91st Ave.	4	4	2	4	Yes	2015	No

2007 CLRP AND FY2008-2013 TIP AIR QUALITY CONFORMITY INPUTS (Highway and HOV)

Agency	Project ID	Improv.	Environ. Review	Facility	From	To	Facility		Lanes		Under Const. or ROW acquired?	Compl. Date or Status	In TIP?
							from	to	from	to			
PG Co.	PGP4a	Construct	N/A	Baltimore Washington Pkwy/Greenbelt Rd (MD 193)	ramp to southbound Baltimore Washington Pkwy		0	5	0	4	No	2025	No
PG Co.	PGS74b	Construct	N/A	Bell Station Road	Annapolis Road (MD 450)	Church Road	0	4	0	4	Yes	2006	No
PG Co.	PGS75	Widen	N/A	Berry Road	Livingston Road	Accokeek Road (MD 373)	4	4	2	4	No	2010	No
PG Co.	PGS9b	Widen	N/A	Bowie Race Track Road	Laurel-Bowie Road (MD 197)	Old Chapel Road	4	4	2	4	No	2015	No
PG Co.	PGS9a	Widen	N/A	Bowie Race Track Road	Annapolis Road (MD 450)	Old Chapel Road	4	4	2	4	No	2015	No
PG Co.	PGS10	Widen	N/A	Brandywine Road	north of Piscataway Road (MD 223)	Thrift Road	4	4	2	4	No	2020	No
PG Co.	PGS76	Widen	N/A	Briggs Chaney Road	Montgomery County line	Old Gunpowder Road	4	4	2	4	Yes	2010	No
PG Co.	PGS11	Widen	N/A	Brightseat Road	Sheriff road	MD 214	4	4	2	4	Yes	2004	Yes
PG Co.	PGS12	Widen	N/A	Brinkley Road	St. Barnabas Road (MD 414)	Allentown Road (MD 337)	3	3	4	6	No	2015	no
PG Co.	PGS13	Construct	N/A	Brooks Drive Extended	Marlboro Pike	Rollins Avenue	0	3	0	4	No	2020	No
PG Co.	PGS14	Widen	N/A	Cabin Branch Drive	Columbia Park Road	north of Sheriff Road	4	4	2	4	No	2015	No
PG Co.	PGS16a	Construct	N/A	Campus Way North	Lake Arbor Way	south of Lottsford Road	0	4	0	4	No	2004	No
PG Co.	PGS16b	Construct	N/A	Campus Way North Extended	south of Lottsford Road	Evarts Drive	0	4	0	4	No	2010	No
PG Co.	PGS17	Widen	N/A	Cherry Hill Road	Montgomery County line	Baltimore Avenue (US 1)	3	3	2	4	No	2012	Yes
PG Co.	PGS18	Widen	N/A	Church Road	Oak Grove Road	Annapolis Road (MD 450)	4	4	2	4	No	2005	No
PG Co.	PGS20a	Widen	N/A	Columbia Park Road	Cabin Branch Road	Columbia Terrace	4	4	2	4	No	2015	No
PG Co.	PGS20b	Widen	N/A	Columbia Park Road	US 50	Cabin Branch Road	4	4	2	4	No	2015	No
PG Co.	PGS21a	Wden/ Construct	N/A	Contee Road	US 1	Van Dusen Road	3	3	2	3	Yes	2004	Yes
PG Co.	PGS21b	Widen	N/A	Contee Road	Briarwood Drive	US 1	4	4	2	4	No	2000	Yes

2007 CLRP AND FY2008-2013 TIP AIR QUALITY CONFORMITY INPUTS (Highway and HOV)

Agency	Project ID	Improv.	Environ. Review	Facility	From	To	Facility		Lanes		Under Const. or ROW acquired?	Compl. Date or Status	In TIP?
							from	to	from	to			
PG Co.	PGS22	Widen	N/A	Dangerfield Road	Cheltenham Avenue	Woodyard Road (MD 223)	4	4	2	4	No	2015	No
PG Co.	PGS24a	Widen	N/A	Dower House Road	Woodyard Road (MD 223)	Foxley Road	4	4	2	4	No	2025	No
PG Co.	PGS24b	Widen	N/A	Dower House Road	Foxley Road	Pennsylvania Avenue (MD 4)	4	4	2	6	No	2015	No
PG Co.	PGS25	Widen	N/A	Fisher road	Brinkley Road	Holton Lane	4	4	2	4	No	2012	No
PG Co.	PGS26	Construct	N/A	Forbes Boulevard Extended	south of Amtrak	Greenbelt Road (MD 193)	0	4	0	4	No	2015	No
PG Co.	PGS27	Widen	N/A	Forestville Road	Allentown Road (MD 337)	Pennsylvania Avenue (MD 4)	4	4	2	4	No	2012	Yes
PG Co.	PGS29	Widen	N/A	Fort Washington Road	Riverview road east of Kenliworth Avenue (MD 201)	Indian Head Highway (MD 210)	4	4	2	4	No	2015	No
PG Co.	PGS30a	Widen	N/A	Good Luck Road	Good Luck Road	Cipriano Road	4	4	2	4	No	2020	No
PG Co.	PGS30b	Widen	N/A	Good Luck Road	Good Luck Road	Cipriano Road	4	4	2	4	No	2015	No
PG Co.	PGS87	Widen	N/A	Governor Bridge Road	US301	Anne arundel County ML King Jr Highway (MD 704)	4	4	2	4	No	2012	No
PG Co.	PGS34a	Widen	N/A	Hill Road	Central Avenue (MD 214)	ML King Jr Highway (MD 704)	4	4	2	4	No	2013	Yes
PG Co.	PGS34b	Construct	N/A	Hill Road	ML King Jr Highway (MD 704)	Sheriff Road	0	4	0	2	No	2015	No
PG Co.	PGS88	Construct	N/A	Iverson St. Extended	Wheeler Road	19th Avenue	0	4	0	4	No	2010	No
PG Co.	PGS35	Widen	N/A	Karen Boulevard	Walker Mill Road	Central Avenue (MD 214)	4	4	2	4	No	2020	No
PG Co.	PGS38a	Widen	N/A	Livingston Road	Livingston Road	Indian Head Highway (MD 210) at Eastover	4	3/4	2	4	No	2015	No
PG Co.	PGS38b	Widen	N/A	Livingston Road	Piscataway Creek	Farmington Road	4	4	2	4	No	2020	No
PG Co.	PGS40a	Widen	N/A	Lottsford Road	Archer Lane	Enterprise Road (MD 193)	3	3	2	4	No	2011	Yes
PG Co.	PGS39b	Widen	N/A	Lottsford Vista Road	ML King Jr Highway (MD 704)	Ardwick-Ardmore Road/Relocated	4	4	2	4	No	2020	No
PG Co.	PGS44b	Widen	N/A	Metzerott Road	Adelphi Road	University Boulevard (MD 193)	4	4	2	4	No	2020	No

2007 CLRP AND FY2008-2013 TIP AIR QUALITY CONFORMITY INPUTS (Highway and HOV)

Agency	Project ID	Improv.	Environ. Review	Facility	From	To	Facility		Lanes		Under Const. or ROW acquired?	Compl. Date or Status	In TIP?
							from	to	from	to			
PG Co.	PGS44a	Widen	N/A	Metzerott Road	New Hampshire Avenue (MD 650)	Adelphi Road	4	4	2	4	No	2020	No
PG Co.	PGS45	Widen	N/A	Mitchellville Road	Mount Oak Road	Collington Road (MD 197)	4	4	2	6	Yes	2000	No
PG Co.	PGS89	Widen	N/A	Mt. Oak	Church Road	Mitchellville Road	3	3	2	4	No	2015	No
PG Co.	PGS46	Widen	N/A	Murkirk Road	west of Baltimore Avenue (US 1)	Odell Road	4	4	2	4	No	2020	No
PG Co.	nrs	Construct	N/A	National Harbor Main Circulation Roads	I-95/I-295 Interchange	Waterfront Parcel, National Harbor	0	4	0	4/6		2008	Yes
PG Co.	PGS47	Widen	N/A	Oak Grove and Leeland Roads	Watkins Park Road (MD 193)	Robert Crain Highway (US 301)	4	4	2	4	No	2005	No
PG Co.	PGS48	Widen	N/A	Old Alexandria Ferry Road	Woodyard Road (MD 223)	Branch Avenue (MD 5)	4	4	2	4	No	2015	No
PG Co.	PGS80	Construct	N/A	Old Baltimore Pike Extended	Muirkirk Road	Contee Road	0	4	0	2	Yes	2020	No
PG Co.	PGS50	Widen	N/A	Old Branch Avenue	north of Piscataway Road (MD 223)	Allentown Road (MD 337)	4	4	2	4	Yes	2015	No
PG Co.	PGS90	Construct	N/A	Old Fort Rd. Extended	Piscataway Road (MD 223)	Old Fort Rd	0	4	0	4	No	2010	No
PG Co.	PGS51a	Widen	N/A	Old Gunpowder Road	Powder Mill Road	Greencastle Road	3	3	2	4	No	2015	No
PG Co.	PGS52	Widen	N/A	Oxon Hill Road	Fort Foote Rd - North	MD 210	4	4	2	4	No	2010	Yes
PG Co.		Widen	N/A	Oxon Hill Road	National Harbor Entrance	Fort Foote Rd - North	4	4	2	4	Yes	2011	Yes
PG Co.	PGS81	Construct	N/A	Presidential Parkway	Suitland Parkway	Melwood Road	0	3	0	6	No	2025	No
PG Co.		Construct		Regency Parkway/ Regency Lane	Regency Lane	Hil-Mar Drive	0	4	0	4		2007	Yes
PG Co.	PGS54	Widen	N/A	Rhode Island Avenue	University Boulevard (MD 193)	Baltimore Avenue (US 1)	4	4	2	4	No	2015	No
PG Co.	PGS55a	Widen	N/A	Ritchie Marlboro Road	Ritchie Rd	White House Road	3	3	2	4	No	2003	Yes
PG Co.	PGS56a	Widen	Approved	Ritchie Road/Forestville Road	Alberta Drive	MD 4 Pennsylvania Avenue	4	4	2	4	Yes	2009	Yes
PG Co.	PGS56e	Widen	N/A	Ritchie Road/Forestville Road	Alberta Drive	Edgeworth Drive	4	4	2	4	No	2004	Yes

2007 CLRP AND FY2008-2013 TIP AIR QUALITY CONFORMITY INPUTS (Highway and HOV)

Agency	Project ID	Improv.	Environ. Review	Facility	From	To	Facility		Lanes		Under Const. or ROW acquired?	Complt. Date or Status	In TIP?
							from	to	from	to			
PG Co.	PGS57	Widen	N/A	Rollins Avenue	Central Avenue (MD 214)	Walker Mill Road	4	4	2	4	No	2020	No
PG Co.	PGS58	Widen	N/A	Rosaryville Road	Robert Crain Highway (US 301)	Woodyard Road (MD 223)	4	4	2	4	No	2020	No
PG Co.	PGS60b	Widen	N/A	Spine Road	Branch Avenue (MD 5)/US 301	Brandywine Road (MD 381)	3	3	2	6	No	2015	No
PG Co.	PGS61	Widen	N/A	Springfield Road	Lanham-Severn Road (MD 546)	Good Luck Road	4	4	2	4	No	2015	No
PG Co.	PGS82	Construct	N/A	St. Joseph's Drive	MD 202	Ardwick-Ardmore Road	0	4	0	4	No	2015	No
PG Co.	PGP2	Construct	N/A	Suitland Parkway	interchange at Rena/Forestville Roads		5	5	0	0	No	2025	No
PG Co.	PGS62a	Widen	N/A	Suitland Road	Allentown Road (MD 337)	Suitland Parkway	3	3	2	4	No	2009	Yes
PG Co.	PGS62b	Widen	N/A	Suitland Road	Suitland Parkway	Silver Hill Road (MD 458)	3	3	2	4	No	2015	No
PG Co.	PGS63	Widen	N/A	Sunnyside Avenue	Baltimore Avenue (US 1)	Kenliworth Avenue (MD 201)	4	4	2	4	No	2015	No
PG Co.	PGS64	Widen	N/A	Surratts Road	Beverly Avenue	Brandywine Road	4	4	2	4	No	2005	Yes
PG Co.	PGS65	Widen	N/A	Temple Hill Road	Piscataway Road (MD 223)	St. Barnabas Road (MD 414)	4	4	2	4	No	2015	No
PG Co.	PGP5a	Construct	N/A	US 50/Columbia Park Road Ramp	westbound ramp to Columbia Park Road		5	5	1	1	No	2025	No
PG Co.	PGP5b	Construct	N/A	US 50/Columbia Park Road Ramp	eastbound ramp Cheverly vicinity		5	5	1	1	Yes	2003	No
PG Co.	PGS67a	Widen	N/A	Van Dusen Road	Contee Road	Sandy Springs Road (MD 198)	3	3	2	4	No	2020	No
PG Co.	PGS67b	Construct	N/A	Van Dusen Road Interchange	@Contee Road		0	0	0	0	No	2025	No
PG Co.	PGS68	Widen	N/A	Virginia Manor Road	Muirkirk Road	Contee Road	4	4	2	4	No	2015	No
PG Co.	PGS69a	Widen	N/A	Walker Mill Road	Silver Hill Road	I-95	3	3	2	4	No	2015	No
PG Co.	PGS70	Widen	N/A	Wheeler Road	St. Barnabas Road (MD 414)	District of Columbia limits	4	4	2	4	No	2020	No
PG Co.	PGS71	Widen	N/A	White House Road	Ritchie-Marlboro Road	Largo-Landover Road (MD 202)	3	3	2	6	Yes	2015	No

2007 CLRP AND FY2008-2013 TIP AIR QUALITY CONFORMITY INPUTS (Highway and HOV)

Agency	Project ID	Improv.	Environ. Review	Facility	From	To	Facility		Lanes		Under Const. or ROW acquired?	Complt. Date or Status	In TIP?
							from	to	from	to			
							PG Co.	PGS72	Widen	N/A			
PG Co.	PGS40b	Construct	N/A	Woodmore Road	Enterprise Road (MD 193)	Church Road		3		4	No	2015	No
PG Co.	PGS42	Widen	N/A	Woodyard Road (MD 223)	Rosaryville Road	Dower House Road	2	2	2	4	No	2007	No
PG Co.	PGS42b	Construct	N/A	Woodyard Road Relocated (MD 223)	Piscataway Creek	Livingston Road	0	3	0	2	No	2010	No
PG Co.	PGS42c	Widen	N/A	Woodyard Road Relocated (MD 223)	Piscataway Creek	Livingston Road	3	3	2	4	No	2020	No
Frederick County													
Fred.Co.	FS2	Construct	N/A	Monocacy Blvd	Hughes Ford Rd.	Gas House Pike	0	3	0	4	Yes	2009	No
Charles County													
Chas.Co.	CHS1	Widen/Realign	N/A	Cross County Connector (Billingsly Rd.)	Middletown Rd.	MD 210	3	3	2	4		2009	No
Anne Arundel County													
BMC	AA1d	Widen	N/A	I-97	US 50/301	MD 32/3	1	1	4	6		2010	
BMC	AA15a	Widen	N/A	I-295	I-695	MD 100	1	1	4	6		2010	
BMC	AA3e	Widen	N/A	MD 2	US 50	MD 100		2	4/5	6		2020	
BMC	AA3g	Widen	N/A	MD 2	MD 450	South River Bridge	2	2	4	6		2030	
BMC	AA4e	Widen	N/A	MD 3	MD 32	Prince George Co. Line	2	2	4	6		2030	
BMC	AA5c	Widen	N/A	MD 32	BW Parkway	Howard County Line		1	4	8		2020	
BMC	AA14C	Widen	N/A	US50 / MD 301	AA / PG line	Bay Bridge	1	1	6	8		2020	
BMC	AA6e	Widen	N/A	MD 100	Howard Co. Line	MD 2		5/1	4/6	6/8		2020	
BMC	AA7	Widen	N/A	MD 170	MD 175	MD 100		2	2	4		2015	

2007 CLRP AND FY2008-2013 TIP AIR QUALITY CONFORMITY INPUTS (Highway and HOV)

Agency	Project ID	Improv.	Environ. Review	Facility	From	To	Facility		Lanes		Under Const. or ROW acquired?	Compl. Date or Status	In TIP?
							from	to	from	to			
							BMC	AA8a	Widen	N/A			
BMC	AA29	Widen	N/A	MD 177	MD 100	South Carolina Avenue	2	2	3/2	5		2020	
BMC	AA30	Widen	N/A	MD 198	MD 32	BW Parkway	2	2	2	4		2025	
BMC	AA30a	Widen	N/A	MD 198	PG line	BW Parkway	2	2	4	6		2025	
BMC		Widen	N/A	MD 607	Woods Rd.	MD 173			2	4		2025	
Carroll County													
BMC	CA3A	Construct	N/A	Hampstead Bypass (MD 30)	Wolf Hill Dr	Brodbeck Rd		2	0	2		2008	
BMC	CA1B	Widen	N/A	MD 140	MD 31	Market St.		1	4/6	8		2020	
BMC	nrs	Construct	N/A	MD 140 (3 new interchange)	@ MD 97S, Center St. & Englar Rd			1	-	-		2020	
BMC	CA2a	Widen	N/A	MD 26	MD 32	Liberty Reservoir		2	4	6		2015	
BMC	in base	Widen	N/A	MD 32	MD 26	Howard County Line		2	2	4		2020	
BMC	CA5	Widen	N/A	MD 97	MD 140	Pleasant Valley Rd		2	2	4		2020	
Howard County													
BMC	HW1b	Widen	N/A	I-70	US 29	US 40	1	1	4	6		2030	
BMC	HW1a	Reconstruct	N/A	I-70 (partial to full interchange)	@ Marriotsville Road		1	1				2020	
BMC	HW19	Widen	N/A	I-95	Howard / PG line	Balt. / Howard line	1	1	8	10		2020	
BMC	HW10d	Widen	N/A	US 29	I-70	MD 100		5	4/6	8		2030	
BMC	HW10b	Widen	N/A	US 29 NB	S. of MD 175	Middle Patuxent River		5	4	6		2010	
BMC	HW3c	Widen	N/A	MD 32	Cedar Lane	Anne Arundel County Line		1	4/6	8		2015	

2007 CLRP AND FY2008-2013 TIP AIR QUALITY CONFORMITY INPUTS (Highway and HOV)

Agency	Project ID	Improv.	Environ. Review	Facility	From	To	Facility		Lanes		Under Const. or ROW acquired?	Compl. Date or Status	In TIP?
							from	to	from	to			
							BMC	HW3b	Widen	N/A			
BMC	HW3d	Widen	N/A	MD 32	I-70	Carroll County Line		2	2	4		2030	
BMC		Construct	N/A	MD 32 (interchange)	@ Burntwoods Rd.							2009	
BMC	HW6c	Widen	N/A	MD 108	Trotter Road	MD 32		2	2	4		2025	
BMC	HW6d	Widen	N/A	MD 108	Woodland Rd.	1200' w. of Centennial Ln.	2	2	2	4		2011	
BMC	HW8b	Widen	N/A	MD 216	West of US 29	Sanner Road		3	2	4		2020	
BMC	nrs	Construct	N/A	Dorsey Run Rd., North	MD 103	MD 175			0	4		2011	
BMC		Construct	N/A	Dorsey Run Rd., South	MD 175	Gulford Rd.			0	4		2010	
BMC	HW16C	Widen	N/A	Gorman Road	Stephens Road	US 1		3	2	3		2025	
BMC	HW18a	Widen	N/A	Marriottsville Road	MD 99	MD 144		3	2	4		2015	
BMC	nrs	Widen	N/A	Patuxent Range Road	US 1	Dorsey Run Road			2	4		2015	
BMC	HW11b	Widen	N/A	Rodgers Avenue	US 40	Courthouse Drive		3	2	4		2010	
BMC	HW13a	Construct	N/A	Sanner Road South	Johns Hopkins Road	MD 216		3	0	4		2015	
BMC	HW13b	Widen	N/A	Sanner Road North	Johns Hopkins Road	Pindell School Road		3	2	4		2015	
BMC	HW14c	Widen	N/A	Snowden River Parkway	MD 100	Broken Land Parkway		3	4	6		2020	
Federal Lands													
Fed. Lands		Widen		Old Mill Rd.	US 1	Pole Rd.	4	2	4	4		2009	
Fed. Lands		Construct		Old Mill Rd.	Pole Rd.	Telegraph Rd.	0	0	4	4		2009	

2007 CLRP AND FY2008-2013 TIP AIR QUALITY CONFORMITY INPUTS (Highway and HOV)

Agency	Project ID	Improv.	Environ. Review	Facility	From	To	Facility		Lanes		Under Const. or ROW acquired?	Complt. Date or Status	In TIP?
							from	to	from	to			
Fed. Lands		Study to Close		US 29 and VA 234 within Manassas National Battlefield			2	0	2	0		not coded	
Fed. Lands		Study		Manassas National Battlefield Bypass (segment 1)	US 29 (near VA 621)	VA 234 (north of Manassas National Battlefield Park)	0	3	0	4		not coded	
Fed. Lands		Study		VA 234 - Manassas National Battlefield Bypass (segment 2)	north of Manassas National Battlefield Park	east of VA 705	4	3	2	4		not coded	
Virginia													
VDOT Freeway													
VDOT	VI1w	Widen	CE-1	I-66 HOV during peak	US 15 (includes intch. reconst.)	US 29 (Gainesville)	1	1	4	6	No	2015	No
VDOT	VI1z	Reconstruct	EA/FONSI	I-66 Interchange	@ US 29 (Gainesville)		1	1	-	-	No	2017	Yes
VDOT	VI1c	Widen	CE-4	I-66 HOV during peak	VA 234 (Prince Wm. Pkwy)	VA 234 Business (Sudley Rd.)	1	1	4	8	completed	2006	Yes
VDOT	VI1ca	Widen	CE-4	I-66 HOV during peak	US 29 (Gainesville)	VA 234 (Prince William Parkway)	1	1	4	8	yes	2010	Yes
VDOT	VI1aa	Reconstruct	Pending	I-66 Access improvements and flyover	@ I-495 (Capital Beltway)		1	1	-	-	No		Yes
VDOT	VI1ab	Reconstruct		I-66 Interchange	@ I-495 (Capital Beltway)		1	1	-	-	No	2013	Yes
VDOT		Study	Pending	I-66 Preliminary Engineering EIS	US 15 (@ Haymarket)	I-495 (Capital Beltway)	1	1	4/6	6/8	No	not coded	Yes
VDOT	VI1l	Study	PCE-1	I-66 ramp	EB on-ramp from US 29 (Arlington)		1	1	-	-	no	not coded	No
VDOT	VI1ae	Reconstruct	Pending	I-66 WB Operational/ Spot Improvements- extend acceleration/ deceleration lanes	Fairfax Dr.	Sycamore St.	1	1	2	3	no	2013	Yes
VDOT	VI1af	Reconstruct	Pending	I-66 WB Operational/ Spot Improvements- extend acceleration/ deceleration lanes	Washington Blvd.	Dulles Airport Access Rd. connector	1	1	3	4	no	2013	Yes

2007 CLRP AND FY2008-2013 TIP AIR QUALITY CONFORMITY INPUTS (Highway and HOV)

Agency	Project ID	Improv.	Environ. Review	Facility	From	To	Facility		Lanes		Under Const. or ROW acquired?	Complt. Date or Status	In TIP?
							from	to	from	to			
VDOT	VI1ag	Reconstruct	Pending	I-66 WB Operational/ Spot Improvements- extend acceleration/ deceleration lanes	Lee Hwy. / Spout Run	Glebe Rd.	1	1	2	3	no	2013	Yes
VDOT	VI2ka	Widen	SEIS-2	I-95 (Wilson Bridge and approaches)	VA 241 (Telegraph Rd.)	US 1	1	1	6	12	yes	2011	Yes
VDOT	VI2k	Widen	SEIS-2	I-95 (Wilson Bridge and approaches)	US 1	MD 210	1	1	6	12	yes	2009	Yes
VDOT	VI2ac	Reconstruct	Pending	I-95 Interchange	@ VA 613 (Van Dorn Street)		1	1	-	-	No	2015	No
VDOT	VI2p	Widen	CE-1	I-95 (provide 4th lane)	Newington	VA 123	1	1	6	8	No	2010	Yes
VDOT	VI2ab	Reconstruct	Pending	I-95 Interchange	@ VA 642 (Lorton Road)		1	1	-	-	No	2010	No
VDOT	VI2d	Construct	CE-4	I-95 Interchange	@ VA 7900 (Franconia-Springfield Parkway)	LOV Access to & from West/from & to North	-	1	-	-	No	2015	Yes
VDOT	VI2r	Widen / Construct	Pending	I-395/I-95 HOV/ BUS/ HOT Lanes	Eads St.	VA 234 (Dumfries Rd.)	1	1	2	3	No	2010	Yes
VDOT	VI2r	Construct	Pending	I-395/I-95 HOV/ BUS/ HOT Lanes Transition	VA 234	VA 610 (Garrisonville Rd.) in Stafford Co.	1	1		2/1	No	2010	Yes
VDOT	VI2r	Widen	Pending	I 95: HOV / Bus / HOT Ramp:	NB HOV/Bus/HOT lanes	Eads Street	1	1	1	2	No	2010	Yes
VDOT	VI2r	Widen	Pending	I 95: HOV / Bus / HOT Ramp:	Eads Street	SB HOV/Bus/HOT Lanes	1	1	1	2	No	2010	Yes
VDOT	VI2r	Remove	Pending	I 95: HOV / Bus / HOT Ramp:	SB Express to SB Gen. use lanes	Between S Hayes St. & Washington Blvd.	1	-	1	0	No	2010	Yes
VDOT	VI2r	Construct	Pending	I 95: HOV / Bus / HOT Ramp:	NB HOV/Bus/HOT Lanes	Shirlington Circle	-	1	0	1	No	2010	Yes
VDOT	VI2r	Construct	Pending	I 95: HOV / Bus / HOT Ramp:	Shirlington Circle	SB HOV/Bus/HOT Lanes	-	1	0	1	No	2010	Yes
VDOT	VI2r	Construct	Pending	I 95 : HOV / Bus / HOT Bus Only Ramp:	NB HOV/Bus/HOT Lanes	Seminary Road (bus only)	-	1	0	1	No	2010	Yes
VDOT	VI2r	Construct	Pending	I 95: HOV / Bus / HOT Ramp:	Seminary Road (bus only)	SB HOV/Bus/HOT Lanes	-	1	0	1	No	2010	Yes

2007 CLRP AND FY2008-2013 TIP AIR QUALITY CONFORMITY INPUTS (Highway and HOV)

Agency	Project ID	Improv.	Environ. Review	Facility	From	To	Facility		Lanes		Under Const. or ROW acquired?	Compl. Date or Status	In TIP?
							from	to	from	to			
VDOT	VI2r	Construct	Pending	I 95: HOV / Bus / HOT Ramp:	NB HOV/Bus/HOT to Gen. use lanes	Between VA 236 (Duke St.) and VA 648 (Edsall Rd.)	-	1	0	1	No	2010	Yes
VDOT	VI2r	Construct	Pending	I 95: HOV / Bus / HOT Ramp:	VA 7100 (Fairfax Co. Pkwy.)	SB HOV/Bus/HOT Lanes	-	1	0	1	No	2010	Yes
VDOT	VI2r	Delete	Pending	I 95: HOV / Bus / HOT Ramp:	SB HOV/Bus/HOT to Gen. use lanes	Between VA 7100 (Fairfax Co. Pkwy.) and VA 638 (Pohick Rd.)	1	-	1	0	No	2010	Yes
VDOT	VI2r	Construct	Pending	I 95: HOV / Bus / HOT Ramp:	NB HOT lanes to new bus station, back to NB HOT lanes (bus only)	Between VA 7100 (Fairfax Co. Pkwy.) and VA 642 (Lorton Rd.)	-	1	0	1	No	2010	Yes
VDOT	VI2r	Construct	Pending	I 95: HOV / Bus / HOT Ramp:	SB HOT lanes to new bus station, back to SB HOT lanes (bus only)	Between VA 7100 (Fairfax Co. Pkwy.) and VA 642 (Lorton Rd.)	-	1	0	1	No	2010	Yes
VDOT	VI2r	Construct	Pending	I 95: HOV / Bus / HOT Ramp:	NB HOV/Bus/HOT to Gen. use lanes	Between VA 7100 (Fairfax Co. Pkwy.) and VA 642 (Lorton Rd.)	-	1	0	1	No	2010	Yes
VDOT	VI2r	Construct	Pending	I 95: HOV / Bus / HOT Ramp:	SB HOV/Bus/HOT to Gen. use lanes	Between VA 123 (Gordon Rd.) & VA 3000 (Prince William Pkwy.)	-	1	0	1	No	2010	Yes
VDOT	VI2r	Construct	Pending	I 95: HOV / Bus / HOT Ramp:	NB HOV/Bus/HOT to Gen. use lanes	Between VA 123 (Gordon Rd.) & VA 3000 (Prince William Pkwy.)	-	1	0	1	No	2010	Yes
VDOT	VI2r	Construct	Pending	I 95: HOV / Bus / HOT Ramp:	NB HOV/Bus/HOT to Gen. use lanes	Between VA 610 (Cardinal Rd.) & VA 234 (Dumfries Rd.)	-	1	0	1	No	2010	Yes
VDOT	VI2c	Reconstruct	Approved	I-95/395/495 Interchange			1	1	-	-	Yes	2008	Yes
VDOT	VI2ca	Construct	Approved	I-495 access ramps (formerly Phase VIII of I-95/394/495 Interchange)	I-95/395/495 interchange to/from I-495 HOV lanes		1	1	-	-	No	2013	Yes
VDOT	VI4i	Construct	Pending	I-495 HOT (peak)	I-395	S. of VA 193 (Georgetown Pike)	1	1	8	8+4	No	2013	Yes

2007 CLRP AND FY2008-2013 TIP AIR QUALITY CONFORMITY INPUTS (Highway and HOV)

Agency	Project ID	Improv.	Environ. Review	Facility	From	To	Facility		Lanes		Under Const. or ROW acquired?	Complt. Date or Status	In TIP?
							from	to	from	to			
							VDOT		Construct	Pending			
VDOT		Construct	Pending	I-495 HOT Lanes Interchange	All movements	@ VA 123 (Chain Bridge Road)	1	1	-	-	No	2013	Yes
VDOT		Construct	Pending	I-495 HOT Lanes Interchange	Provides SB to WB, WB to SB, EB to SB, NB to WB, & EB to NB HOV to HOT	@ I-66 HOV Lanes	1	1	-	-	No	2013	Yes
VDOT		Construct	Pending	I-495 HOT Lanes Interchange	HOT movements to and from South Only	@ US 29	1	1	-	-	No	2013	Yes
VDOT		Construct	Pending	I-495 HOT Lanes Interchange	All movements	@ VA 620 (Braddock Road)	1	1	-	-	No	2013	Yes
VDOT	VI4k	Construct	EA-2	I-495 HOV (peak)	S. of VA 193 (Georgetown Pike)	Am. Leg. Bridge	1	1	8	10	No	2015	No
VDOT		Reconstruct	N/A	VA 267 (Dulles Toll Road) Interchange	@ VA 674 (Hunter Mill Road)		-	-	-	-	No	2012	No
VDOT	VP15g	Widen	N/A	VA 267 (Dulles Toll Road) Ramps	@ I-495 Interchange		1	1	-	-	completed	2005	No
VDOT	MW1	Widen	Pending	Dulles Airport Access Road	Dulles Airport	VA 123	1	1	4	6	No	2010	No
VDOT	VP21d	Widen	N/A	Dulles Greenway	Goose Creek Bridge	VA 901 (Claiborne Parkway)	1	1	4	6	No	2005	No
VDOT	VP21e	Widen	N/A	Dulles Greenway	VA7/15 Bypass	Goose Creek Bridge	1	1	4	6	No	2007	No
VDOT	VP21b	Construct	N/A	Dulles Greenway Interchanges	@ VA 653 & @ Battlefield Parkway		1	1	-	-	No	2007	No
VDOT Primary													
VDOT	VP26	Study	N/A	Techway	Dulles Toll Road	MD State Line	-	-	-	-	No	not coded	Yes
VDOT	VP1a	Widen	Pending	US 1	Stafford County Line	VA 235 South	2	2	4	6	No	2015	No
VDOT	VP1u	Widen	Pending	US 1	VA 235 South	VA 235 North	2	2	4	6	No	2015	No
VDOT	VP1t	Widen	Pending	US 1 (bus/right-turn lanes)	VA 235 North	SCL Alexandria (I-95 Capital Beltway)	2	2	6	8	No	2025	No
VDOT		Widen	Pending	US 1	@ VA 619 (Joplin Road)	USMC HERITAGE CENTER ACCESS	2	2	4	5	complete	2006	Yes

2007 CLRP AND FY2008-2013 TIP AIR QUALITY CONFORMITY INPUTS (Highway and HOV)

Agency	Project ID	Improv.	Environ. Review	Facility	From	To	Facility		Lanes		Under Const. or ROW acquired?	Complt. Date or Status	In TIP?
							from	to	from	to			
VDOT	VP1f	Widen	Approved	US 1 (3la. NB - 4 la. SB)	Lorton Rd.	Telegraph Rd.	2	2	4	6	complete	2005	Yes
VDOT	VP1fb	Widen	Approved	US 1 (as part of VP1f)	Armistead Rd.	Lorton Rd.	2	2	4	6	complete	2005	No
VDOT	VP1o	Widen	Approved	US 1 (Neabsco Creek Bridge)	S. Cardinal Dr.	North Blackburn Rd.	2	2	4	6	No	2009	yes
VDOT	VP1p	Widen	Pending	US 1 (part of 1/123 interchange)	Occoquan Rd.	Annapolis Way	2	2	4	6	No	2012	No
VDOT	nrs	Reconstruct	Pending	US 1 Interchange	@ Russell Road		1	1	-	-	No	2010	No
VDOT	VP2s	Widen / Upgrade	Pending	VA 7	Route 9	Market Street (Leesburg)	2	1	4	6	No	2015	Yes
VDOT	VP2j	Widen	Pending	VA 7 Bypass	VA 7 West	VA 7/US 15 East	5	1	4	6	No	2015	No
VDOT	VP2g	Upgrade	Pending	VA 7 (new interchanges)	VA 7/15 (Leesburg Bypass)	VA 28	2	1	6	6	No	2015	No
VDOT	VP2ma	Widen	Pending	VA 7	Rolling Holly Drive	Reston Ave.	2	2	4	6	No	2011	Yes
VDOT	VP2m	Widen	Pending	VA 7	Reston Ave.	Tyco Rd.	2	2	4	6	No	2020	Yes
VDOT	VP2L	Widen	Pending	VA 7	Dulles Toll Rd.	I-495	2	2	6	8	No	2013	No
VDOT	VP2b	Widen	Pending	VA 7	Seven Corners @ VA 606 (Baron Cameron Ave.)	Bailey's Crossroads	2	2	4	6	No	2020	No
VDOT	nrs	Reconstruct	Pending	VA 7	@ Claiborne Pkwy./West Spine Rd.		-	-	-	-	No	2005	Yes
VDOT	VP2t	Construct	Pending	VA 7 interchange	@ Ashburn Villiage Blvd.		-	-	-	-	No	2008	Yes
VDOT		Construct	Pending	VA 7 interchange	@ Loudoun County Parkway		-	-	-	-	No	2010	No
VDOT	nrs	Reconstruct	Pending	VA 7	@ VA 711 (Williams Gap Road)		2	2	4	4	No	2006	Yes
VDOT	VP3b	Study	Pending	VA 9	West Virginia State Line	VA 7	2	2	2	4	No	not coded	No
VDOT	nrs	Reconstruct	Pending	VA 9	@ VA 662 (Clarks Gap Road)		3	3	-	-	No	2006	Yes

2007 CLRP AND FY2008-2013 TIP AIR QUALITY CONFORMITY INPUTS (Highway and HOV)

Agency	Project ID	Improv.	Environ. Review	Facility	From	To	Facility		Lanes		Under Const. or ROW acquired?	Complt. Date or Status	In TIP?
							from	to	from	to			
VDOT	VP4e	Widen	Pending	US 15 (James Madison Highway)	US 29	I-66	2	2	2	4	No	2020	No
VDOT	VP4fa	Widen	N/A	US 15 (James Madison Highway)	I-66	VA 234	2	2	2	4	No	2008	Yes
VDOT	VP4fb	Widen	N/A	US 15 (James Madison Highway)	VA 234	Loudoun County Line	2	2	2	4	No	2020	No
VDOT	nrs	Reconstruct	N/A	US 15 (James Monroe Highway)	Whites Ferry Rd.	Maryland State Line	3	3	2	2	No	2008	Yes
VDOT	nrs	Reconstruct	Pending	VA 27 Interchange	@ VA 244 (Columbia Pike)		-	-	-	-	No	2011	No
VDOT	VP6h	Widen	Pending	VA 28	Fauquier County Line	VA 652 (Fitzwater Dr.)	3	3	2	4	No	2020	No
VDOT	VP6ka	Widen	Pending	VA 28	VA 652 (Fitzwater Dr.)	VA 215 (Vint Hill Road)	3	3	2	4	No	2013	No
VDOT	VP6k	Upgrade/ Widen	EA complete	VA 28	VA 215 (Vint Hill Road)	VA 234 Bypass	3	2	4	6	No	2012	No
VDOT	nrs	Recons/ Widen	Pending	VA 28	Bridge over Broad Run	Replace / Widen to ultimate width	3	3	2	6	Yes	2007	Yes
VDOT	VP6b	Widen	Pending	VA 28 (Centreville Road)	N. City Limits of Manassas Park	Old Centreville Rd.	2	2	4	6	No	2025	No
VDOT	VP6e	Widen/ Upgrade	N/A	VA 28 PPTA (Phase II)	I-66	VA 7	2	1	6	8	No	2010	No
VDOT	VP6ea	Widen/ Upgrade	N/A	VA 28	Dulles Toll Rd.	VA 606 (Old Ox Rd.)	2	1	6	6	No	2008	No
VDOT	VP6eb	Construct		VA 28 Interchange	@ VA 209 (Innovation Ave.)		-	-	-	-	No	2007	No
VDOT		Reconst.		VA 28 Interchange	@ New Braddock Rd.		-	-	-	-	No	2008	Yes
VDOT	VP6v	Construct/ Upgrade	N/A	VA 28 PPTA (Phase I) Interchange	@ VA 668 (McLearen Road)	SASM Interchange to VA 668 upgrade	2	1	6	6	No	2006	Yes
VDOT	VP6w	Construct/ Upgrade	N/A	VA 28 PPTA (Phase I) Interchange	@ Sterling Park	VA 606 to VA 625 upgrade	2	1	6	6	Yes	2007	Yes
VDOT	VP6x	Construct	N/A	VA 28 PPTA (Phase I) Interchange	@ VA 625 (Church & Waxpool Rds.)		2	2	6	6	Yes	2006	Yes
VDOT	VP6y	Construct	N/A	VA 28 PPTA Interchange	@Nokes Boulevard		-	-	-	-	No	2009	No

2007 CLRP AND FY2008-2013 TIP AIR QUALITY CONFORMITY INPUTS (Highway and HOV)

Agency	Project ID	Improv.	Environ. Review	Facility	From	To	Facility		Lanes		Under Const. or ROW acquired?	Complt. Date or Status	In TIP?
							from	to	from	to			
VDOT		Reconstruct		VA 28 Intersection	@ Braddock Rd./ Walney Rd.	eliminate left turns from EB Braddock to NB VA 28, eliminate left turns from VA 28 SB to Walney, and from WB Walney to SB VA 28, eliminate through movement from Braddock to/from Walney					No	2008	No
VDOT	VI1bb	Remove		VA 28 SB ramp	at I-66	eliminate left turn movement- EB I-66 off-ramp to SB VA 28					No	2008	
VDOT	VI1cc	Remove		VA 28 NB ramp	at I-66	eliminate turn movement- NB VA 28 to WB I-66					No	2008	
VDOT	VP7ae	Construct	Pending	US 29 Interchange	@ VA 55/VA 619		-	-	-	-	No	2016	Yes
VDOT	VP7r	Widen	Pending	US 29	Virginia Oaks Drive	I-66	2	5	4	6	No	2016	Yes
VDOT	VP7s	Widen	Pending	US 29 (add NB lane)	I-66	Entrance to Conway Robinson MSF	3	2	4	5	No	2016	Yes
VDOT	VP7ad	Widen	Pending	US 29	US 50	I-66	2	2	4	6	No	2010	No
VDOT	VP7aa	Widen	Pending	US 29	ECL City of Fairfax (vic. Nutley St.)	Espana Court	2	2	4	6	No	2020	No
VDOT	VP7ab	Widen	Pending	US 29	Espana Court	I-495	2	2	4	6	No	2015	No
VDOT	VP7n	Study	Pending	US 29	Pleasant Valley Drive	VA 28	2	2	4	6	No	not coded	No
VDOT	VP7g	Study	Pending	US 29	Fauquier County Line	I-66 (Gainesville)	2	2	4	6	No	not coded	No
VDOT	VSP57a	Construct	Pending	Route 29 (Parallel)	US 29 (Lee Highway) (near US 15)	Sommerset Crossing Drive	0	4	0	4	No	2025	No
VDOT	nrs	Construct	Pending	US 50 Traffic Circle	@ US 15 (Gilbert's Corner)		-	-	-	-	No	2010	Yes
VDOT	VP8q	Widen	Pending	US 50	VA 659 Relocated	VA 742 (Poland Rd.)	2	2	4/5	6	No	2010	No
VDOT	VP8c	Widen	Pending	US 50	VA 742 (Poland Rd.)	VA 609 (Pleasant Valley)	2	2	4/5	6	No	2012	Yes

2007 CLRP AND FY2008-2013 TIP AIR QUALITY CONFORMITY INPUTS (Highway and HOV)

Agency	Project ID	Improv.	Environ. Review	Facility	From	To	Facility		Lanes		Under Const. or ROW acquired?	Complt. Date or Status	In TIP?
							from	to	from	to			
							VDOT	VP8r	Widen	Pending			
VDOT	nrs	Reconstruct	Pending	US 50	Waples Mill Rd (intersection Improvements)	2nd EB to NB left turn lane	0	0	0	0	complete	2005	No
VDOT	VP8n	Widen	Pending	US 50 (WBL)	I-66	Waples Mill Road	2	2	2	3	No	2020	No
VDOT	VP8g	Widen	Pending	US 50	I-66	WCL Fairfax City	2	2	6	8	No	2020	No
VDOT	VP8h	Widen	Pending	US 50	ECL City of Fairfax	Arlington County Line	2	2	4	6	No	2020	No
VDOT	AR2e	Reconstruct	Pending	US 50 (Arlington Blvd.)	ARC/FFX Line	Washington Blvd.	2	2	6	6	No	2015	No
VDOT	AR2f	Reconstruct	Pending	US 50 (Arlington Blvd.)	Pershing Dr.	Ft. Myer Dr.	2	2	6	6	No	2015	No
VDOT	nrs	Reconstruct	Pending	US 50 Interchange	@Jaguar Trail		2	2	-	-	No	2007	Yes
VDOT	nrs	Reconstruct	Pending	US 50 Interchange	@ VA 120 (Glebe Road)		-	-	-	-	No	2010	No
VDOT	nrs	Reconstruct	CE-1	US 50 Interchange	@ VA 27 (Washington Blvd.)		-	-	-	-	No	2015	No
VDOT	VP8o	Reconstruct	Pending	US 50 Interchange	@ Courthouse Road / 10th Street		-	-	-	-	No	2010	Yes
VDOT	nrs	Reconstruct	Pending	US 50 Interchange	@ VA 110 (N. Scott St.)		1	1	-	-	No	2020	No
VDOT	VP23a	Widen	Pending	VA 55 (John Marshall Highway)	Gainesville UM Church	US 29 @ VA 619	3	3	2	4	No	2016	Yes
VDOT	nrs	Reconstruct	Approved	VA 120 (Glebe Road)	@ VA 244 (Columbia Pike)		-	-	-	-	No	2004	Yes
VDOT	nrs	Reconstruct	Approved	VA 120 (Glebe Road)	@ Arlington Ridge Rd.	left turn lanes	-	-	-	-	No	2005	Yes
VDOT	nrs	Reconstruct	Pending	VA 120 (Glebe Road)	Military Rd.	DC line	2	2	2	2	No	2020	No
VDOT	nrs	Reconstruct	N/A	VA 120 (Glebe Road)	Quebec St.	2nd St.	2	2	-	-	No	2006	Yes
VDOT	nrs	Reconstruct	Pending	VA 120 (Glebe Road)	W. Glebe Rd.	24th Rd.	2	2	4	4	No	2010	No
VDOT	VP10j	Widen	Pending	VA 123	VA 7	I-495	2	2	6	8	complete		No

Note: Shaded areas represent changes from the FY2007-2012 TIP / 2006 CLRP

2007 CLRP AND FY2008-2013 TIP AIR QUALITY CONFORMITY INPUTS (Highway and HOV)

Agency	Project ID	Improv.	Environ. Review	Facility	From	To	Facility		Lanes		Under Const. or ROW acquired?	Complt. Date or Status	In TIP?
							from	to	from	to			
VDOT	VP10ob	Widen	Pending	VA 123 (Dolley Madison Blvd.)	DTR Ramps	VA 694 (Great Falls St.)	2	2	4	6	complete	2006	No
VDOT	nrs	Construct	Approved	VA 123 Interchange	@ US 1		-	-	-	-	No	2012	Yes
VDOT	VP10g	Widen	Pending	VA 123	Route 1	Horner Road	2	2	4	6	No	2008	No
VDOT	VP10s	Widen	Approved	VA 123	Horner Road	Devil's Reach Road	2	2	4	6	No	2015	No
VDOT	VP10ea	Widen	Pending	VA 123 (Ox Road)	VA 722 North	Hooes Rd.	2	2	2	6	Yes	2006	Yes
VDOT	VP10h	Widen	Approved	VA 123 (Ox Road)	Hooes Rd.	Fairfax Co. Parkway	2	2	4	6	No	2015	No
VDOT	VP10f	Widen	Pending	VA 123 (Ox Road)	Fairfax Co. Parkway	Burke Center Parkway	2	2	4	6	No	2015	No
VDOT	VP10r	Widen	Pending	VA 123	Burke Center Parkway	Braddock Road	2	2	4	6	No	2020	No
VDOT	nrs	Reconstruct	Pending	VA 123	@ VA 620 (Braddock Road)		2	2	-	-	complete	2005	Yes
VDOT	VP10l	Widen	Pending	VA 123 (Occoquan River Bridge)	South Approach	VA 722 North	2	2	2	6	yes	2007	Yes
VDOT	nrs	Reconstruct	Pending	VA 193	@ Riverbend Road & 0.5 mi. west of VA 28 intersection	@ Nethercliff Hall Road	3	3	2	2	Yes	2007	Yes
VDOT	VP24a	Relocate/ Widen	Approved	VA 215		VA 28	4	3	2	4	No	2011	No
VDOT	nrs	Construct	Pending	VA 234 Interchange	@ US 1		-	1	-	-	No	2015	Yes
VDOT	VP12d	Widen/ Upgrade	Pending	VA 234 (Dumfries Road)	I-95	US 1	2	5	2	6	No	2011	No
VDOT	VP12b	Widen	Approved	VA 234 (Dumfries Road)	Country Club Dr.	Eclipse Dr.	2	2	2	4	complete	2007	Yes
VDOT	VP12a	Widen	Pending	VA 234 (Dumfries Road)	Eclipse Dr.	Snowfall Dr.	2	2	2	4	complete	2006	no
VDOT	VP12l	Widen	Approved	VA 234 (Dumfries Road)	VA 234 Bypass (at Limstrong, VA 649)	SCL of Manassas		2	2	4	No	2010	No
VDOT	VP12k	Widen/ Upgrade	Approved	VA 234 (Manassas Bypass)	VA 234 S. of Manassas	I-66	5	1	4	6	No	2020	No
VDOT	VP12o	Construct	Pending	Tri-County Parkway (CTB alignment C & D)	I-66	Loudoun County Line	0	2	0	4	No	2012	No

2007 CLRP AND FY2008-2013 TIP AIR QUALITY CONFORMITY INPUTS (Highway and HOV)

Agency	Project ID	Improv.	Environ. Review	Facility	From	To	Facility		Lanes		Under Const. or ROW acquired?	Compl. Date or Status	In TIP?
							from	to	from	to			
							VDOT	VP13a	Widen	Pending			
VDOT	nrs	Reconstruct	Pending	VA 236 (intersection/spot improvements)	Pickett Road	Lake Drive	2	2	4	4	No	2008	Yes
VDOT	nrs	Reconstruct	Pending	VA 236 EB	@ VA 620 (Braddock Road)		-	-	-	-	No	2009	Yes
VDOT	nrs	Reconstruct	Pending	VA 236 WB	@ VA 620 (Braddock Road)		-	-	-	-	No	2009	Yes
VDOT	VP26a	Construct	Pending	VA 28 Bypass	VA 234 (Sudley Road) @ Godwin Drive	I-66	0	5	0	6	No	2015	No
VDOT	VP26b	Construct	Pending	VA 28 Bypass	I-66	VA 620 (Braddock Road) @ VA 613	0	2	0	4	No	2020	No
VDOT Urban													
VDOT	VU28b	Construct	Developer	Battlefield Parkway	US 15 south of Leesburg	Dulles Greenway	0	2	0	4	No	2005	No
VDOT	VU28c	Construct	Developer	Battlefield Parkway	Dulles Greenway	Sycolin Road	0	2	0	4	Yes	2007	No
VDOT	VU28d	Widen/ Upgrade	Pending	Battlefield Parkway / Lawson Rd.	Sycolin Road	Kincaid Boulevard	4	2	2	4	Yes	2007	No
VDOT	VU28da	Construct	Approved	Battlefield Parkway	Kincaid Boulevard	Route 7	0	2	0	4	No	2008	Yes
VDOT	VU28e	Construct	Developer	Battlefield Parkway	Route 7	Fort Evans Road	0	2	0	4	No	2005	No
VDOT	VU28f	Construct	Pending	Battlefield Parkway	Fort Evans Road	Edwards Ferry Road	0	2	0	4	Yes	2010	No
VDOT	VU28a	Study	Pending	Battlefield Parkway	US 15 south of Leesburg	US 15 Bypass North	0	2	0	4/6	not coded	2010	No
VDOT	VU2b	Construct	Approved	Clermont Ave.	Eisenhower Ave.	Duke St.	-	3	-	4	no	2015	Yes
VDOT	nrs	Reconstruct		Duke St.	Fairfax County Line	Washington St.	2	2	4/6	4/6		2005	No
VDOT	VU30f	Widen	Pending	East Elden Street	Herndon Parkway East	Fairfax County Parkway	3	3	4	6	No	2012	No
VDOT	VU52	Widen	Pending	Eisenhower Ave.	Stovall St.	Holland Lane	3	3	4	6	No	2010	No
VDOT	nrs	Construct	Pending	George Mason Blvd.	Univer. Dr @ Armstrong St.	Univ. Dr. @ Parking Entr.	0	4	0	2	No	2009	Yes

2007 CLRP AND FY2008-2013 TIP AIR QUALITY CONFORMITY INPUTS (Highway and HOV)

Agency	Project ID	Improv.	Environ. Review	Facility	From	To	Facility		Lanes		Under Const. or ROW acquired?	Complt. Date or Status	In TIP?
							from	to	from	to			
VDOT	VU35b	Construct	N/A	Mill Road Extension	Telegraph Rd.	DMV complex	-	3	-	2	No	2010	Yes
VDOT	VU51a	Construct	Pending	Potomac Yard Spine Road	US Route 1	Chrystal Dr.	0	4	0	4	No	2009	No
VDOT	VU26b	Widen	Approved	Richmond Ave.	Dumfries Road	Nagel St.	3	3	2	4	complete	2005	No
VDOT	VU30a	Widen	Approved	South Elden Street/Centreville Road	Worldgate Drive	Herndon Parkway	2	2	4	6	No	2006	Yes
VDOT	VU10b	Widen	Pending	Spring Street	Herndon Parkway East	Fairfax County Parkway	3	3	4	6	No	2011	No
VDOT	VU33	Widen	Pending	Sycolin Road	VA 7/US 15 Bypass	SCL of Leesburg	3	3	2	4	No	2007	No
VDOT	VU32	Widen	Pending	US 15 (South King Street)	Evergreen Mill Road	SCL of Leesburg	3	2	2	4	No	2007	Yes
VDOT	nrs	Construct	Approved	VA 28 Overpass & Interchg.	Overpass Norfolk-Southern RR B line	Interchange w/Wellington Rd.	2	2	4	4	No	2012	Yes
VDOT	VU40	Widen	Pending	US 29 (Lee Highway)	US 50	Chain Bridge Road	2	2	4	6	No	2011	Yes
VDOT	VU6b	Widen	Approved	US 29 (Lee Highway)	Chain Bridge Road	Eaton Place	2	2	4	6	No	2010	Yes
VDOT	VU29	Construct	Approved	VA 123 (Chain Bridge Road)	US 50	I-66	2	2	5	6	No	2010	Yes
VDOT	VU45	Widen	Approved	VA 234 (Dumfries Road)	South Corporate Limits	Hastings Drive	3	3	2	4	No	2011	No
VDOT	nrs	Widen	N/A	VA 234 (Sudley Road) 3rd NB lane	Dorsey Circle	Godwin Dr.	2	2	4	5	No	2010	No
VDOT	VU48b	Widen	Approved	Wellington Road	Godwin Drive	VA 28 (Nokesville Road)	3	3	2	4	No	2010	Yes
Arlington Secondary													
VDOT	AR26	Widen	Pending	N. Pershing Dr.	George Mason Dr.	VA 120	3	3	2	4	No	2012	No
VDOT	AR28b	Widen	N/A	N. Quincy St.	Wilson Blvd.	VA 237	3	3	2	3	No	2007	No
VDOT	AR5a	Widen	Pending	VA 244 (Columbia Pike)	Oakland St.	Washington Blvd.	2	2	4	5	No	2010	No
VDOT	AR17a	Widen	Pending	Washington Blvd.	Wilson	Kirkwood	3	3	3	4	No	2015	No

2007 CLRP AND FY2008-2013 TIP AIR QUALITY CONFORMITY INPUTS (Highway and HOV)

Agency	Project ID	Improv.	Environ. Review	Facility	From	To	Facility		Lanes		Under Const. or ROW acquired?	Complt. Date or Status	In TIP?
							from	to	from	to			
							VDOT	AR19c	Reconstruct	Pending			
Fairfax Secondary													
VDOT	FFX2a	Construct	Pending	VA 602 (Reston Pkwy.)	VA 5320 (Sunrise Valley Dr.)	VA 606 (Baron Cameron Avenue)	3	3	4	6	No	2015	No
VDOT	FFX3c	Study	Pending	Frying Pan Rd.	VA 28	VA 657 (Centreville Rd.)	3	3	2/4	6	No	not coded	Yes
VDOT	VSF2c	Widen	Pending	VA 608 (West Ox Road)	VA 6985 (Ox Trail)	VA 602 (Lawyers Road)	3	3	2	4	Complete	2006	Yes
VDOT	VSF2a	Widen	Pending	VA 608 (West Ox Road)	VA 6558 (Penderbrook Drive)	VA 6985 (Ox Trail)	3	3	2	4	yes	2008	Yes
VDOT	FFX4	Study	Pending	VA 609 (Pleasant Valley Road)	US 29	US 50	3	3	2/4	4	No	not coded	No
VDOT	VSF4f	Study	Pending	VA 611 (Furnace Road)	VA 123 (Ox Road)	VA 642 (Lorton Road)	3	3	2	4	No	not coded	No
VDOT	VSF4c	Widen	Pending	VA 611 (Telegraph Road)	VA 613 (Beulah St.)	VA 635 (Hayfield Road)	3	3	2	4	No	2020	Yes
VDOT	VSF4i	Widen	Pending	VA 611 (Telegraph Road)	VA 635 (Hayfield Road)	VA 633 (S. Kings Hwy.)	3	3	2	4	No	2014	Yes
VDOT	VSF4h	Widen	Pending	VA 611 (Telegraph Road)	VA 633 (S. Kings Hwy.)	VA 644 (Franconia Road)	3	3	2	4	No	2015	No
VDOT	FFX5c	Study	Approved	VA 613 (S. Van Dorn St.)	VA 644	Kingstowne Village Pkwy.	3	3	4	6	No	not coded	No
VDOT	VSF15b	Construct	Pending	VA 613 (Van Dorn Street)	@ VA 644 (Franconia Road)	interchange	0	0	0	0	No	2013	Yes
VDOT	VSF7	Widen	Pending	VA 618 (Woodlawn Road)	US 1 (Richmond Highway)	VA 613 (Beulah Road)	3	3	2	4	No	2015	No
VDOT	VSF8g	Widen	Pending	VA 620 (Braddock Rd)	VA 7100 (Fairfax Co. Pkwy.)	VA 123 (Ox Road)	3	3	4	6	No	2015	No
VDOT	VSF8l	Study	Pending	VA 620 (Braddock Road)	VA 609 (Pleasant Valley Road)	Flat Lick Branch	4	3	2	2	No	not coded	No
VDOT	VSF8d	Study	Pending	VA 620 (Braddock Road)	VA 645 (Burke Lake Road)	VA 651 (Guinea Road)	3	3	4	6	No	not coded	No
VDOT	VSF8c	Study	Pending	VA 620 (Braddock Road) (HOV)	I-495	VA 645 (Burke Lake Road)	0	0	0	2	No	not coded	No
VDOT	VSF8j	Construct/ Widen	Pending	VA 620 (New Braddock Rd.)	VA 28	US 29 @ VA 662 (Stone Rd.)	0/4	3	0/2	4	No	2015	No

2007 CLRP AND FY2008-2013 TIP AIR QUALITY CONFORMITY INPUTS (Highway and HOV)

Agency	Project ID	Improv.	Environ. Review	Facility	From	To	Facility		Lanes		Under Const. or ROW acquired?	Complt. Date or Status	In TIP?
							from	to	from	to			
VDOT	VSF10c	Widen	Pending	VA 638 (Pohick Road)	US 1	I-95	3	3	2	4	No	2015	No
VDOT	VSF10e	Widen	Pending	VA 638 (Rolling Road)	VA 5297 (DeLong Dr.)	VA 6922 (Odell Street) / Fairfax County Parkway	3	3	2	4	No	2010	No
VDOT	VSF10a	Widen	Approved	VA 638 (Rolling Road)	VA 7100 (Fairfax County Parkway)	VA 644 (Old Keene Mill Road)	3	3	2	4	No	2012	Yes
VDOT	FFX8	Study	Pending	VA 640 (Sydenstricker Rd.)	VA 644 (Old Keene Mill Rd)	VA 7100 (Fairfax County Parkway)	3	3	2	4	No	not coded	No
VDOT	VSF13e	Widen	Pending	VA 642 (Lorton Road)	VA 600 (Silverbrook Road)	US 1 (Richmond Highway)	3	3	2	6	complete	2006	Yes
VDOT	VSF13d	Widen	Pending	VA 642 (Lorton Road)	VA 611 (Furnace Road)	VA 600 (Silverbrook Road)	3	3	2	4	No	2015	No
VDOT	FFX9a	Study	Pending	VA 643 (Lee Chapel Rd.)	VA 123 (Ox Road)	VA 7100 (Fairfax County Parkway)	3	3	2	4	No	not coded	No
VDOT	VSF15	Widen	Pending	VA 644 (Franconia Road)	VA 3290 (Craft Road)	VA 611 (Telegraph Road)	3	3	2	4	No	2015	No
VDOT	FFX10	Study	Pending	VA 644 (Old Keene Mill)	VA 643	VA 7100 (Fairfax County Parkway)	3	3	2	4	No	not coded	No
VDOT	VSF16a	Widen	Approved	VA 645 (Burke Lake Road)	VA 643 (Lee Chapel Road)	VA 7100 (Fairfax County Parkway)	3	3	2	4	Complete	2005	Yes
VDOT	VSF36	Construct	N/A	VA 645 (Clifton Road)	VA 620 (Braddock Road)	US 29 (Lee Highway)	3	3	2	4	Complete	2007	No
VDOT	FFX11a	Widen	Pending	VA 645 (Stringfellow Rd.)	US 50	VA 7100 (Fairfax County Parkway)	3	3	2	4	No	2010	Yes
VDOT	VSF16g	Widen	Pending	VA 645 (Stringfellow Road)	VA 7735 (Fair Lakes Blvd.)	US 50	3	3	2	4	No	2013	Yes
VDOT	VSF37	Widen	Approved	VA 650 (Gallows Road)	Gatehouse Road	Providence Forest Dr.	3	3	4	6	No	2013	No
VDOT	VSF33d	Widen	Pending	VA 651 (Guinea Road)	VA 620 (Braddock Road)	VA 2430 (Braeburn Road)	3	3	2	4	No	2015	No
VDOT	VSF33a	Widen	Pending	VA 651 (Guinea Road)	VA 6197 (Roberts Parkway)	VA 4807 (Pommeroy Drive)	3	3	2	4	No	2015	No
VDOT	FFX12a	Construct	Pending	VA 651 (New Guinea Rd.)	VA 123 (Ox Road)	Roberts Rd.	0	3	0	4	No	2015	No
VDOT	VSF17b	Construct	Pending	VA 655 (Shirley Gate Road)	VA 7100 (Fairfax County Parkway)	VA 620 (Braddock Road)	0	3	0	4	No	2015	No
VDOT	VSF18c	Widen	N/A	VA 657 (Centreville Road)	VA 8390 (Metrotech Dr.)	VA 668 (McLearen Road)	3	3	4	6	No	2020	No

2007 CLRP AND FY2008-2013 TIP AIR QUALITY CONFORMITY INPUTS (Highway and HOV)

Agency	Project ID	Improv.	Environ. Review	Facility	From	To	Facility		Lanes		Under Const. or ROW acquired?	Complt. Date or Status	In TIP?
							from	to	from	to			
VDOT	VSF18b	Widen	N/A	VA 657 (Centreville Road)	VA 8390 (Metrotech Dr.)	VA 668 (McLearen Road)	3	3	2	4	No	2015	no
VDOT	VSF18e	Study	Pending	VA 657 (Centreville Road)	VA 668 (McLearen Rd)	VA 608 (Frying Pan Rd)	3	3	4	6	No	not coded	No
VDOT	VSF18h	Widen	Pending	VA 657 (Centreville Road)	VA 608 (West Ox Rd)	VA 608 (Frying Pan Rd)	3	3	2	4	No	2012	Yes
VDOT	FFX14	Study	Pending	VA 657 (Walney Rd.)	VA 662 (Poplar Tree)	Westfields. Blvd.	3	3	2	4	No	not coded	No
VDOT	FFX15a	Study	Pending	VA 662 (Poplar Tree Rd.)	VA 645 (Stringfellow Rd.)	Westfields. Blvd.	3	3	2	4	No	not coded	No
VDOT	VSF35b	Study	Pending	VA 662 (Stone Rd/Poplar Tree Rd)	VA 620 (Braddock Road)	VA 8460 (Stonecroft Blvd.)	3	3		4	No	not coded	No
VDOT	FFX16a	Study	Pending	VA 665 (Fox Mill Rd.)	VA 602 (Reston Pkwy)	VA 7100 (Fairfax County Parkway)	3	3	2	4	No	not coded	No
VDOT	FFX17a	Study	Pending	VA 666 (Monroe St.)	VA 608 (W. Ox Rd.)	VA 665 (Fox Mill)	3	3	2	4	No	not coded	No
VDOT	FFX17b	Widen	Pending	VA 666 (Monroe St.)	VA 665 (Fox Mill)	Herndon	3	3	2	6	No	2010	No
VDOT	FFX18	Widen	Pending	VA 668 (McLearen Rd.)	VA 28	VA 657 (Centreville Rd.)	3	3	2/4	6	Yes	2020	No
VDOT	VSF21c	Construct	Approved	VA 673 (McLearen Rd)	VA 608	VA 602/Interchange at Fairfax Co. Parkway	0	3	0	4	No	2015	No
VDOT	VSF21b	Widen	Approved	VA 673 (McLearen Rd)	VA 657 (Centreville Road)	VA 608	3	3	2	4	No	2015	No
VDOT	FFX20b	Widen	Pending	VA 674 (Hunter Mill Rd.)	VA 673 (Vale Rd.)	VA 123 (Chain Bridge Road)	3	3	2	4	No	2012	No
VDOT	VSF22e	Widen	N/A	VA 674 (Hunter Mill Road)	VA 267 (Dulles Toll Road)	Crowell Road	3	3	2	4	No	2015	No
VDOT	VSF36	Relocate	N/A	VA 675 (Sunset Hills Rd.)	West of Edlin School	VA 675 (Crowell Road)	3	3	4	4	No	2012	No
VDOT	FFX21b	Study	Pending	VA 675 (Sunset Hills Rd.)	VA 828 (Wiehle Ave.)	VA 7100 (Fairfax County Parkway)	3	3	4	6	No	not coded	No
VDOT	VSF24	Widen	N/A	VA 684 (Spring Hill Road)	VA 7 (Leesburg Pike)	VA 6034 (International Drive)	3	3	2	4	No	2008	Yes
VDOT	FFX22c	Study	Pending	VA 828 (Wiehle Ave.)	VA 228 (Dranesville Road)	Loudoun Co. Line	0	3	0	4	No	not coded	No
VDOT	VSF25aa	Convert	Pending	VA 7100 (Fairfax Co Pkwy HOV)	VA 267 (Dulles Toll Road)	Sunrise Valley Dr.	5	5	6	4+2	No	2015	Yes

2007 CLRP AND FY2008-2013 TIP AIR QUALITY CONFORMITY INPUTS (Highway and HOV)

Agency	Project ID	Improv.	Environ. Review	Facility	From	To	Facility		Lanes		Under Const. or ROW acquired?	Complt. Date or Status	In TIP?
							from	to	from	to			
VDOT	VSF25ea	Widen	Pending	VA 7100 (Fairfax Co Pkwy HOV)	Sunrise Valley	Rugby Rd.	5	5	4	4+2	No	2015	Yes
VDOT	VSF25e	Widen	Pending	VA 7100 (Fairfax Co Pkwy HOV)	Rugby Rd.	US 50	5	5	4	4+2	No	2015	Yes
VDOT	VSF25y	Upgrade/Widen	Pending	VA 7100 (Fairfax Co Pkwy HOV)	US 50	VA 7735 (Fair Lakes Pkwy)	2	5	4	4+2	No	2010	No
VDOT	VSF25z	Upgrade/Widen	Pending	VA 7100 (Fairfax Co Pkwy HOV)	VA 7735 (Fair Lakes Pkwy)	I-66	2	5	6	6+2	No	2010	No
VDOT	VSF25g	Widen	Approved	VA 7100 (Fairfax Co Pkwy)	I-66	VA 123 (Ox Road)	5	5	4	6	No	2015	No
VDOT	VSF25j	Widen	Approved	VA 7100 (Fairfax County Parkway)	VA 636 (Hooes Road)	VA 640 (Sydenstricker Road)	2	2	4	6	No	2015	No
VDOT	VSF25l	Construct	Pending	VA 7100 (Fairfax Co Pkwy HOV)	VA 640 (Sydenstricker Road)	VA 7900 (Franconia-Springfield Parkway)	0	2	0	2	No	2015	No
VDOT	VSF25n	Construct	Approved	VA 7100 (Fairfax County Parkway)	VA 4600 (Fullerton Road) & @ VA 7735 (Fair Lakes Pkwy)	VA 7900 (Franconia-Springfield Parkway)	0	1	0	6	No	2011	Yes
VDOT		Construct	Pending	VA 7100 Interchange		Monument Drive	2	5	-	-	No	2010	Yes
VDOT	VSF39	Widen	Pending	VA 7735 (Fair Lakes Pkwy) (3rd EB Lane)	VA 7100	Fair Lakes Circle	4	4	4	5	No	2010	No
VDOT	VSF26	Construct	Pending	VA 7900 HOV (Franconia-Springfield Parkway)	VA 7100 (Fairfax County Parkway)	VA 2677 (Frontier Drive)	5	5	-	2	No	2010	No
VDOT	VSF26a	Construct	Pending	VA 7900 HOV (Franconia-Springfield Parkway)	Interchange @ Neuman St.		1	1	-	-	No	2020	No
VDOT	VSF26b	Upgrade	Pending	VA 7900 HOV (Franconia-Springfield Parkway)	VA 638 (Rolling Rd.)	VA 617 (Backlick Rd.)	5	1	6+2	6+2	No	2020	No
VDOT	FFX24c	Widen	Pending	VA 8460 (Stonecroft Blvd.)	VA 661 (Old Lee Rd.)	Willard Rd.	3	3	4	6	No	2010	No
FHWA/VDOT	FED2	Widen	Pending	Old Mill Rd.	US 1	Pole Rd	4	4	2	4	No	2009	No
FHWA/VDOT	FED3	Construct	Pending	Old Mill Rd. extended	Pole Rd.	Telegraph	0	3	0	4	No	2009	No
Loudoun Secondary													
VDOT	VSL51	Construct	Pending	Atlantic Boulevard	VA 625 (Church Road)	VA 7	-	3	-	4	No	2010	No
VDOT	VSL39	Construct	N/A	Broadlands Boulevard (Ryan Bypass)	VA 659	VA 625	0	3	0	4	No	2005	No

2007 CLRP AND FY2008-2013 TIP AIR QUALITY CONFORMITY INPUTS (Highway and HOV)

Agency	Project ID	Improv.	Environ. Review	Facility	From	To	Facility		Lanes		Under Const. or ROW acquired?	Complt. Date or Status	In TIP?
							from	to	from	to			
VDOT	VSL1b	Widen/ Upgrade	Pending	VA 606 (Ldn Co. Pkwy) (nee Old Ox Rd.)	VA 634	VA 621	4	3	2	4	No	2015	No
VDOT		Widen	N/A	VA 606 (Dulles Greenway Interchange)	within Greenway R/W		1	1	2	6	No	2004	No
VDOT	VSL10c	Construct	Pending	VA 607 (Loudoun County Pkwy)	VA 606 / VA 842	VA 772 / VA 607	-	3	-	4	Yes	2010	No
VDOT	VSL10d	Wden/ Construct	N/A	VA 607 (Loudoun County Pkwy) (nee VA 28 Bypass)	VA 620 @ VA 613	Edgewater St.		3		4	Yes	2005	No
VDOT	VSL10ba	Widen	Pending	VA 607 (Loudoun County Pkwy)	VA 625 (Waxpool Road)	W&OD Trail	3	3	4	6	No	2010	No
VDOT	VSL10bb	Widen/ Upgrade	Pending	VA 607 (Loudoun County Pkwy)	W&OD Trail	Redskin Park Drive	4	3	2	6	No	2010	No
VDOT	VSL10bf	Widen/ Upgrade	Pending	VA 607 (Loudoun County Pkwy) (dirt road)	Redskin Park Drive	Gloucester Parkway	4	3	2	4	No	2005	No
VDOT	VSL10bc	Widen	Pending	VA 607 (Loudoun County Pkwy)	Redskin Park Drive	Gloucester Parkway	3	3	4	6	No	2015	No
VDOT	VSL10bd	Widen/ Upgrade	Pending	VA 607 (Loudoun County Pkwy)	Gloucester Parkway	VA 7	4	3	2	4	No	2005	No
VDOT	VSL12	Widen	Pending	VA 625 (Church Rd.)	VA 28	VA 637	3	3	2	4	Yes	2006	Yes
VDOT	VSL12b	Widen	Pending	VA 625 (Waxpool Rd.)	Loudoun County Parkway	Broad Run	3	3	4	6	Yes	2005	Yes
VDOT	VSL12c	Widen	Pending	VA 625 (Waxpool Rd.)	Broad Run	VA 28	3	3	4	6	Yes	2005	No
VDOT	VSL42	Widen/ Upgrade	Approved	VA 634 (Lockridge/Moran Road)	VA 606 (Old Ox Road)	Randolph Drive	4	3	2	4	Complete	2006	No
VDOT	VSL45	Widen/ Upgrade	Pending	VA 643 (Sycolin Road) Phase II	Leesburg Town Limits	VA 659 (Belmont Ridge Road)	4	3	2	4	No	2015	No
VDOT	VSL4a	Widen/ Upgrade	Pending	VA 659 (Belmont Ridge Rd.)	National Rec. & Park Ent.	Dulles Greenway	4	3	2	4	No	2020	Yes
VDOT	VSL4ab	Widen/ Upgrade	Pending	VA 659 (Belmont Ridge Road)/VA 659 Relocated	Dulles Greenway	VA 7	4	3	2	4	No	2015	Yes
VDOT	VSL4d	Widen/ Upgrade	Pending	VA 659 (Belmont Ridge Road)	VA 659 Relocated	National Rec. & Park Ent.	4	3	2	4	No	2010	No
VDOT	VSL4e	Widen/ Upgrade	N/A	VA 659 (Gum Spring Rd.)	VA 620 (Braddock Road)	US 50	4	3	2	4	No	2006	No
VDOT	VSL4f	Widen/ Upgrade	Pending	VA 659 (Gum Spring Rd.)	Prince William County Line	VA 620 (Braddock Road)	4	3	2	4	No	2010	No

2007 CLRP AND FY2008-2013 TIP AIR QUALITY CONFORMITY INPUTS (Highway and HOV)

Agency	Project ID	Improv.	Environ. Review	Facility	From	To	Facility		Lanes		Under Const. or ROW acquired?	Complt. Date or Status	In TIP?
							from	to	from	to			
VDOT	VSL4c	Construct	Pending	VA 659 Relocated	PWCL / VA 234 Bypass	US 50	0	3	0	4	No	2015	No
VDOT	VSL4b	Construct	Pending	VA 659 Relocated	US 50	VA 659 (Belmont Ridge Rd.)	0	3	0	4	No	2012	No
VDOT	VSL44	Widen/ Upgrade	N/A	VA 772 (Ryan Road)	VA 659 (Belmont Ridge Rd.)	Dulles Greenway @ exit #6	4	3	2	6	Yes	2004	No
VDOT	VSL40a	Widen	N/A	VA 901 (Claiborne Parkway)	VA 640 (Ashburn Farm Pkwy)	W&OD Trail	4	3	2	4	Yes	2007	No
VDOT	VSL40b	Construct	N/A	VA 901 (Claiborne Parkway)	W&OD Trail	VA 7	0	3	0	4	Yes	2006	No
VDOT	nrs	Construct	Pending	VA 868 (Davis Dr.)	VA 606 (Old Ox Road)	VA 625 (Church Road)	-	4	-	4	No	2007	Yes
VDOT	VSL46	Construct	Pending	VA 1036 (Pacific Boulevard)	Sterling Blvd.	Gloucester Parkway	-	3	-	4	No	2010	Yes
VDOT	VSL47	Widen/ Upgrade	N/A	River Creek Parkway	Riverside Parkway	VA 773 (Edwards Ferry Road)	4	3	2	4	No	2007	No
VDOT	VSL48	Construct	N/A	Riverside Parkway	River Creek Parkway	Ashburn Village Blvd.	-	3	-	4	Complete	2007	No
VDOT	VSL49	Construct	Pending	Russell Branch Parkway	VA 659 (Belmont Ridge Road)	Loudoun County Parkway	-	3	-	4	No	2015	No
VDOT	VSL50	Widen/ Upgrade	Pending	VA 773 (Fort Evans Road)	Leesburg Town Limits	River Creek Parkway	4	3	2	4	No	2007	No
Prince William Secondary													
VDOT	VSP49b	Construct	Pending	Heathcote Boulevard	VA 625 (Old Caroline Rd.)	US 15 (James Madison Highway)	0	3	0	4	No	2010	No
VDOT	VSP49	Construct	Pending	Heathcote Boulevard	US 29	VA 676 (Catharpin Road)	0	3	0	4	Yes	2007	No
VDOT	VSP60	Construct		Neabsco Mills Rd.	Dale Blvd.	Opitz Blvd.	0	3	0	4	Yes	2007	No
VDOT	VSP54	Construct	N/A	North/South Road at Innovation	VA 840 (University Blvd.)	VA 674 (Wellington Road)/VA 660 (Bethlehem Road)	0	3	0	4	No	2010	Yes
VDOT	VSP59	Construct	N/A	Peaks Mill (Purcell Road east)	Route 643 (Purcell Road)	Route 3000 (Prince William Parkway)	0	4	0	2	No	2025	No
VDOT	VSP39	Widen	Pending	Russell Road	I-95	Dunlap Avenue	4	3	2	4	No	2010	No
VDOT	VSP46b	Construct	Pending	VA 1566 (Sudley Manor Drive Extension)	VA 619 (Linton Hall Road)	VA 234 Bypass	0	3	0	4	complete	2007	Yes

2007 CLRP AND FY2008-2013 TIP AIR QUALITY CONFORMITY INPUTS (Highway and HOV)

Agency	Project ID	Improv.	Environ. Review	Facility	From	To	Facility		Lanes		Under Const. or ROW acquired?	Complt. Date or Status	In TIP?
							from	to	from	to			
VDOT	VSP46	Construct	Pending	VA 1566 (Sudley Manor Drive Extension)	VA 234 Bypass	Chatsworth Drive	0	3	0	4	Yes	2007	Yes
VDOT	VSP24	Construct	Pending	VA 1596 (Williamson Blvd)	Sudley Manor Dr.	Portsmouth Rd.	0	4	0	4	No	2020	No
VDOT	VSP21c	Widen	N/A	VA 1600 (Ashton Ave.)	Coverstone Dr.	VA 621 (Balls Ford Rd.)	3	3	2	4	No	2010	No
VDOT	VSP25b	Widen	Pending	VA 1781 (NewTelegraph Rd/Summit School Road)	VA 849 (Caton Hill Road)	VA 640 (Minnieville Rd.)	4	4	2	4	No	2015	No
VDOT	VSP25c	Widen	Pending	VA 1781 (Telegraph Rd.)	VA 3000 (Prince William Parkway)	VA 849 (Caton Hill Rd.)	4	4	2	4	No	2015	No
VDOT	VSP25d	Construct	Pending	VA 2480 (Benita Fitzgerald Drive, Extended)	VA 610 (Cardinal Drive)	VA 2480 (Benita Fitzgerald Drive)	0	3	0	4	complete	2006	Yes
VDOT	VSP23d	Widen	Pending	VA 3000 (Prince William Pkwy.)	VA 776 (Liberia Ave.)	VA 640 (Minnieville Rd.)	2	2	4	6	No	2025	No
VDOT	VSP2a	Widen/ Upgrade	Approved	VA 619 (Linton Hall Road)	US 29 (Lee Highway)	VA 675 (Glenkirk Road)	4	3	2	6	Yes	2007	Yes
VDOT	VSP2b	Widen/ Upgrade	Approved	VA 619 (Linton Hall Road)	VA 675 (Glenkirk Road)	VA 621 (Devlin Road)	4	3	2	4	Yes	2007	Yes
VDOT	VSP2e	Widen/ Upgrade	Approved	VA 619 (Linton Hall Road)	VA 621 (Devlin Road)	VA 1566 (Sudley Manor Dr.)	4	3	2	4	Yes	2006	Yes
VDOT	VSP2ea	Widen/ Upgrade	Approved	VA 619 (Linton Hall Road)	VA 1566 (Sudley Manor Dr.)	VA 28 (Nokesville Road)	4	3	2	4	No	2009	yes
VDOT	VSP2h	Widen	Pending	VA 619 (Joplin Rd.) add right turn lane	I-95 exit Ramp	US 1	4	4	4	5	complete	2006	yes
VDOT	VSP3a	Widen/ Upgrade		VA 621 (Balls Ford Road)	VA 234 (Sudley Road)	Bethlehem Road	4	3	2	4	No	2015	No
VDOT	VSP3b	Widen/ Upgrade	N/A	VA 621 (Balls Ford Road)	Bethlehem Road	VA 234 Bypass	4	3	2	4	No	2015	No
VDOT	VSP3d	Widen	Pending	VA 621 (Devlin Road)	Route 674 (Wellington Road)	Route 619 (Linton Hall Road)	3	3	2	4	No	2025	No
VDOT	nrs	Widen	Pending	VA 625 (Old Carolina Rd.)	I-66 Underpass	Piedmont Vista Dr.			2	4	No	2010	No
VDOT	VSP40a	Construct	Pending	VA 635 (Cherry Hill VRE Access Road)	US 1	Future VRE Station site	0	4	0	2	No	2010	Yes
VDOT	VSP5d	Widen	Pending	VA 640 (Minnieville Road)	VA 610 (Cardinal Drive)	VA 643 (Spriggs Road)	3	3	2	4	No	2007	Yes
VDOT	VSP5e	Widen	Pending	VA 640 (Minnieville Road)	VA 643 (Spriggs Road)	VA 234	3	3	2	4	No	2020	No

2007 CLRP AND FY2008-2013 TIP AIR QUALITY CONFORMITY INPUTS (Highway and HOV)

Agency	Project ID	Improv.	Environ. Review	Facility	From	To	Facility		Lanes		Under Const. or ROW acquired?	Compl. Date or Status	In TIP?
							from	to	from	to			
VDOT	VSP15c	Widen	Pending	VA 640 (Minnieville Road)	VA 849 (Caton Hill Road)	VA 641 (Old Bridge Road)	3	3	2	4	Yes	2008	Yes
VDOT	VSP8a	Widen	Pending	VA 643 (Purcell Rd.)	VA 234 (Dumfries Rd.)	VA 642 (Hoadly Rd.)	3	3	2	4	No	2020	No
VDOT	VSP12a	Widen	Pending	VA 643 (Spriggs Rd.)	VA 234 (Dumfries Rd.)	VA 642 (Hoadly Road)	3	3	2	4	yes	2007	Yes
VDOT	VSP17b	Widen	Approved	VA 674 (Wellington Rd.)	VA 621 (Devlin Road)	VA 668 (Rixlew Lane)	3	3	2	4	No	2012	No
VDOT	VSP17c	Widen	Pending	VA 674 (Wellington Rd.)	Limestone Dr.	Vicinity Cellar Door Dr.	3	3	2	4	Yes	2006	Yes
VDOT	VSP18	Widen	Pending	VA 676 (Catharpin Rd.)	VA 55 (John Marshall Highway)	Heathcote Blvd.	3	3	2	4	No	2020	No
VDOT	VSP20b	Widen	Pending	VA 784 (Dale Blvd.)	I-95	VA 640 (Minnieville Rd.)		3	4	6	No	2020	No
VDOT		Widen/ Upgrade	Pending	VA 784 (Rippon Boulevard Extension)	US 1 (Jefferson Davis Highway)	Rippon VRE Station	4	3	2	4	No	2010	No
VDOT	VSP47d	Construct	Pending	VA 840 (University Blvd.) (nee East-West Connector)	Route 660 (Hornbaker Road)	VA 674 (Wellington Rd.)	0	3	0	4	No	2025	No
VDOT	VSP56a	Construct	Pending	VA 840 (University Blvd.)	VA 674 (Wellington Road)	US 29 @ Ent. to Conway Robinson MSF	0	3	0	4	complete	2006	Yes
VDOT	VSP45	Construct	N/A	VA 861 (Clover Hill Road Extended/ Airport Access Rd.)	VA 234 Bypass	Manassas Airport	0	4	0	2	Yes	2006	Yes
VDOT	VSP62	Construct	Pending	Rollins Ford Rd.	Songsparrow Dr.	US 15	0		0	4	No	2012	No
FAMPO													
FAMPO	FAI1a	Construct	EA Compl.	I-95 diamond interchange	at VA 627		1	1	0	0	Yes	2008	
FAMPO		Reconst/ Constr.	EA Compl.	I-95 interchange	at VA 627						No	2030	
	FAI1E	construct		I-95 CD lanes	VA 630	VA 627	1	1	6	6+4	No	2025	
FAMPO		Recon-struct	EA Compl.	I-95 interchange	at VA 630		1	1	0	0	No	2020	
FAMPO	FAP5h	Widen		US 1	Rt 212	Princess Anne Street	2	2	4	6	No	2030	

2007 CLRP AND FY2008-2013 TIP AIR QUALITY CONFORMITY INPUTS (Highway and HOV)

Agency	Project ID	Improv.	Environ. Review	Facility	From	To	Facility		Lanes		Under Const. or ROW acquired?	Complt. Date or Status	In TIP?
							from	to	from	to			
							FAMPO	FAP5b	Widen				
FAMPO	FAP5	Widen		US 1	VA 3 interchange	SCL	3	3	4	6	No	2030	
FAMPO	FAP5e	Widen		US 1	SCL Frederickburg	VA 208 (Courthouse Rd.)	2	2	4	6	No	2030	
FAMPO	FAP5d	Widen		US 1	VA 208 (Courthouse Rd.)	Mills Dr.	2	2	4	6	No	2010	
FAMPO	FAP5f	Widen		US 1	Widewater Parkway	Rt 610	2	2	4	6	No	2025	
FAMPO	FAP5g	Widen		US 1	Rt 610	Rt 630	2	2	4	6	No	2025	
FAMPO	FAP6a	Widen		US 17 Bypass	VA 1	VA 2	2	2	2	4	No	2025	
FAMPO	FAP6c	Widen		US 17 Bypass	I-95	Village Parkway	2	2	4	6	No	2010	
FAMPO	FAP7	Widen		VA 212 (Butler Rd)	US 1	VA 212 / VA 218 Connection	4	4	2	4	No	2025	
FAMPO	FAS23a	Construct	Pending	VA 208 Bypass (Spotsylvania)	West of Ta River	East of Po River	0	3	0	2	ROW	2009	
FAMPO	FAS23b	Construct	Pending	VA 208 Bypass (Spotsylvania)	East of Po River	West of Ni River	0	3	0	4	ROW	2007	
STAFFORD COUNTY SECONDARY													
FAMPO	FAS7a	Widen	Compl.	VA 607 (Deacon Rd.)	VA 626	VA 218	4	4	2	4	Yes	2010	
FAMPO	FAS3c	Widen		VA 610 (Garrisonville Rd.)	VA 610 (existing 4 lane section)	VA 643	4	4	2	4	Yes	2020	
FAMPO	FAS3db	Widen		VA 610 (Garrisonville Rd.)	VA 684 (Mine Rd.)	I-95 SB ramp	4	3	6	6	No	2020	
FAMPO	FAS3da	Widen		VA 610 (Garrisonville Rd.)	I-95 SB ramp	US 1	4	3	6	8	No	2020	
FAMPO	FAS3d	Widen		VA 610 (Garrisonville Rd.)	VA 684 (Mine Rd.)	VA 641	4	3	4	6	No	2030	
FAMPO	FAS3e	Widen		VA 610 (Garrisonville Rd.)	VA 641	VA 648	4	3	4	6	No	2025	
FAMPO	FAS8	Recon-struct		VA 624	US 1	VA 626	4	4	2	4	No	2010	

2007 CLRP AND FY2008-2013 TIP AIR QUALITY CONFORMITY INPUTS (Highway and HOV)

Agency	Project ID	Improv.	Environ. Review	Facility	From	To	Facility		Lanes		Under Const. or ROW acquired?	Complt. Date or Status	In TIP?
							from	to	from	to			
							FAMPO	FAS29	Widen				
FAMPO	FAS5b	Widen		VA 630 (Courthouse Rd)	I-95	VA 648	4	4	2	4	No	2010	
FAMPO	FAS13	Recon-struct		VA 648 (Shelton Shop Rd.)	VA 610	VA 627	4	4	2	4	No	2015	
FAMPO	FAS11a	Construct		VA 684 Extension	Existing Mine Rd.	VA 628	0	4	0	4	No	2020	
FAMPO	FAS11b	Construct		VA 684 Extension	VA 628	VA 652	0	4	0	4	No	2030	
CITY OF FREDERICKSBURG													
FAMPO	FAS16	Widen		VA 3 (William St.) (fredericksb	Mahone Dr.	US 1	3	3	4	6	No	2020	
FAMPO	FAS25	Widen		Princess Anne St.	US 1	Herndon St.	3	3	2	4	No	2010	
SPOTSYLVANIA COUNTY SECONDARY													
FAMPO	FAS22	Widen		VA 3 (Spotsylvania)	Rutherford Dr.	VA 627 (Gordon Rd.)	2	2	3	6	No	2020	
FAMPO	FAS26a	Widen		VA 606 (Mudd Tavern Rd.)	US 1	I-95	3	3	2	4	No	2030	
FAMPO	FAS26b	Widen		VA 606 (Morris Rd)	US 1	VA 208	3	3	2	4	No	2030	
FAMPO	FAS27	Widen		VA 608 (Massaponax Church	VA 628	US 1	3	3	2	4	No	2030	
FAMPO	FAS31	Widen		VA 610 (Old Plank Rd.)	VA 627	VA 612	4	4	2	4	No	2030	
FAMPO	FAS17	Widen		VA 612 (Catharpin Rd.)	Ni River Reservoir	VA 610	4	4	2	4	No	2030	
FAMPO	FAS18a	Widen		VA 620 (Harrison Rd)	VA 639	US 1 Bypass	4	4	2	4	No	2020	
FAMPO	FAS9b	Widen		VA 627 (Gordon Rd.)	VA 628	VA 620	4	4	2	4	No	2030	
FAMPO	FAS28	Widen		VA 628 (Smith Station Rd)	VA 608	VA 627	4	4	2	4	No	2030	
FAMPO	FAS19	Widen		VA 636 (Hood Dr.)	US 1	VA 208	4	4	2	4	No	2020	

2007 CLRP AND FY2008-2013 TIP AIR QUALITY CONFORMITY INPUTS (Highway and HOV)

Agency	Project ID	Improv.	Environ. Review	Facility	From	To	Facility		Lanes		Under Const. or ROW acquired?	Compl. Date or Status	In TIP?
							from	to	from	to			
							FAMPO	FAS19b	Widen				
FAMPO	FAS20a	Widen	Pending	VA 639 (Leavells Rd.)	VA 620	VA 208	4	4	2	4	Yes	2005	
FAMPO	FAS20b	Widen		VA 639 (Leavells Rd.)	VA 208	VA 628	4	4	2	4	Yes	2030	
FAMPO	FAS20c	Widen		VA 639 (Bragg Rd.)	VA 618	VA 3	4	4	2	4	No	2010	
FAMPO	FAS21	Construct		Parallel Facility to I-95 (Spotsy	US 1	VA 620	0	4	0	4	No	2020	