

Forecasted Farmland Loss in the Chesapeake Bay Watershed (2002 to 2030)



Chesapeake Bay Watershed

Counties

Chesapeake Bay

Phase 5 Watershed Modeling Segments

Farmland loss (acres)

-13429 - -5000

-4999 - -4000

-3999 - -3000

-2999 - -2000

-1999 - -1000

-999 - -500

-499 - 0

No loss

2000 Land Cover

Agriculture (RESAC)

Alfalfa

Barren

Crops with manure

Crops without manure

Deciduous forest

Evergreen forest

Extractive

Hay

High intensity developed

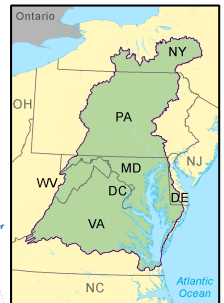
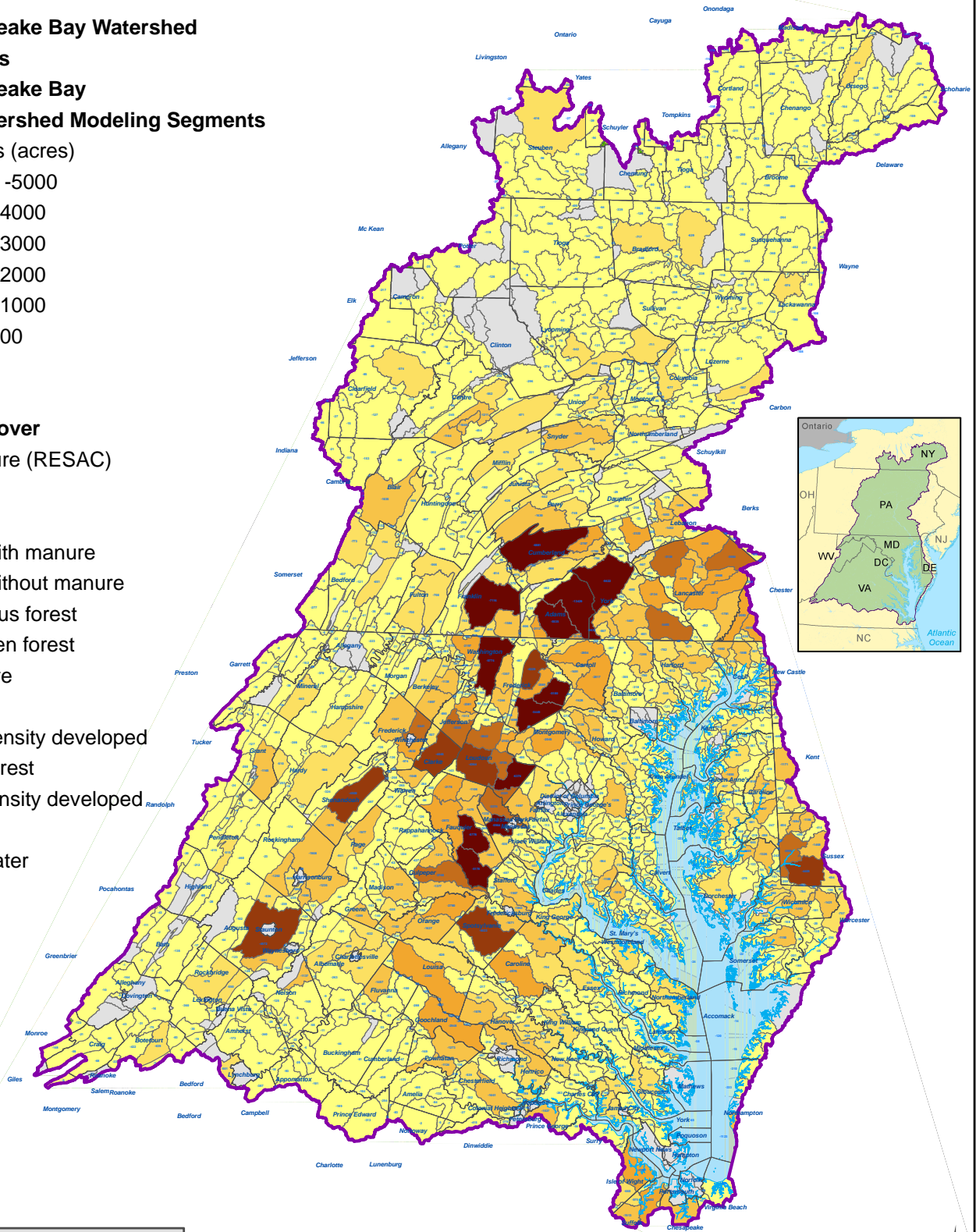
Mixed forest

Low intensity developed

Nursery

Open water

Pasture



Data Sources: Chesapeake Bay Program
For more information, visit www.chesapeakebay.net
Disclaimer: www.chesapeakebay.net/termsfuse.htm

