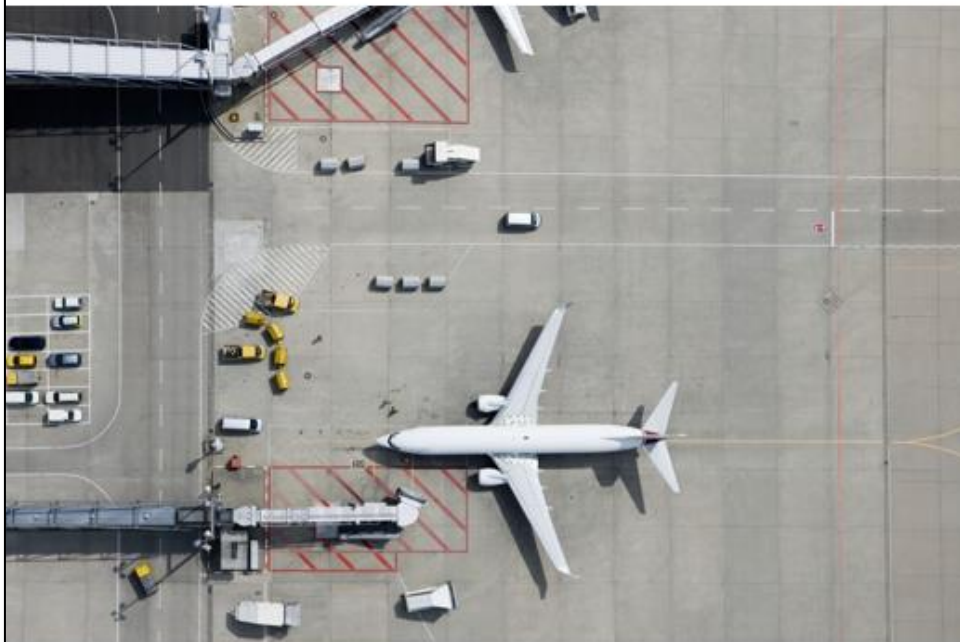


WASHINGTON-BALTIMORE REGIONAL  
AIR CARGO STUDY - DRAFT

2022 Update

February 2025



# AIR CARGO ELEMENT

## 2022 Update

Olga Perez  
Planning Program Specialist

Aviation Technical Subcommittee  
March 27, 2025



National Capital Region  
Transportation Planning Board

Agenda Item #4

# Summary of Feedback

---

- **Visuals and Formatting**

A few suggestions focused on improving the visuals and formatting of charts and graphs for easier comprehension. Some visuals were too complex, and others required better labeling. Specific feedback included missing labels in figures and the need for headers on tables that were broken across multiple pages.

- **Minor Issues**

Misspelled words were identified in several places, and reviewers pointed out some grammar and language inconsistencies, particularly with technical terms and punctuation.

# Key changes

---

The following key changes have been made in the report based on the feedback received:

- **Corrected Data in Executive Summary**

Corrected the number of forecasts for population and households.

- **Revised Information in IAD Cargo Facilities**

Updated and clarified information in the section on IAD Infrastructure for better accuracy.

- **Updated Maps**

Changes in coloring and labels to improve clarity and accuracy.

# Corrected Data in Executive Summary

---

- Support Development in Response to Demographic Shifts: Current growth projections indicate that between 2020 and 2050, the Washington-Baltimore Air Systems Planning **Region will add more than 2 million persons and 981 thousand households**, suggesting a notable corresponding increase in e-commerce demand. Strategic planning should focus on adapting infrastructure and housing capacity to accommodate this growth. Efforts should be directed toward urban redevelopment, optimizing land use, and enhancing public services to manage growth effectively while maintaining sustainability and quality of life across the region. Moreover, as the region adapts to demographic changes through sustainable urban redevelopment and optimized land use, there is an opportunity to integrate these efforts with air cargo infrastructure planning, ensuring that logistics networks align with evolving community needs and support economic resilience.



# Revised Information in IAD Cargo Facilities

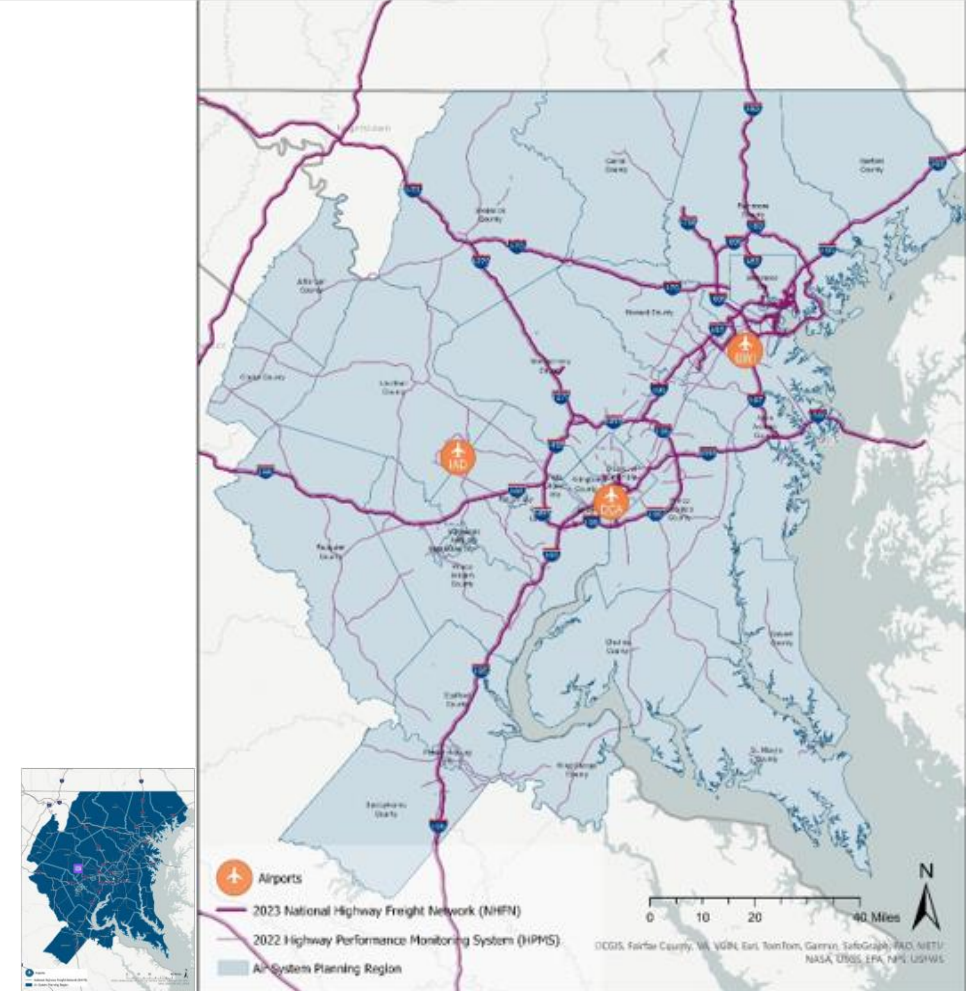
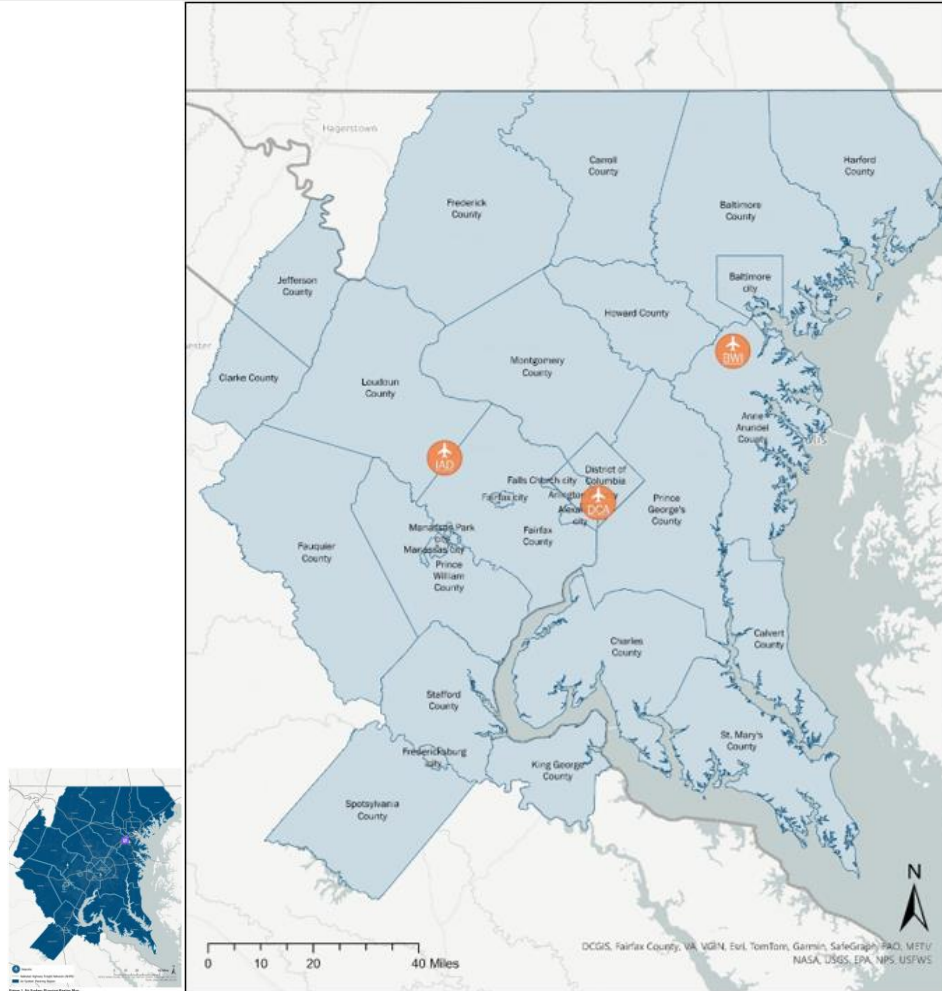
---

- IAD houses six cargo buildings accounting for 481,084 square feet of warehouses, including a common area and excluding upper-level office space at 70,051 square feet, accounting for approximately 551,000 square feet of operational space. These facilities accommodate specialized services...

.. carrying capacity that will occur with the completion of new and reconstructed runways. Dulles International Next, is a multi-year construction program that includes \$7 billion worth of airport infrastructure upgrades that will transform passenger comfort, convenience and service (MWAA). This program is part of the master plan for the future development and expansion of Washington Dulles International Airport. It includes the construction of the new Concourse E, a 435,000 square-foot facility, with construction having initiated in November 2023 and plans for completion in 2026. The concourse is designed to accommodate 14 additional gates and provide capacity for larger airlines, enhancing the airport's overall operational efficiency and passenger experience.

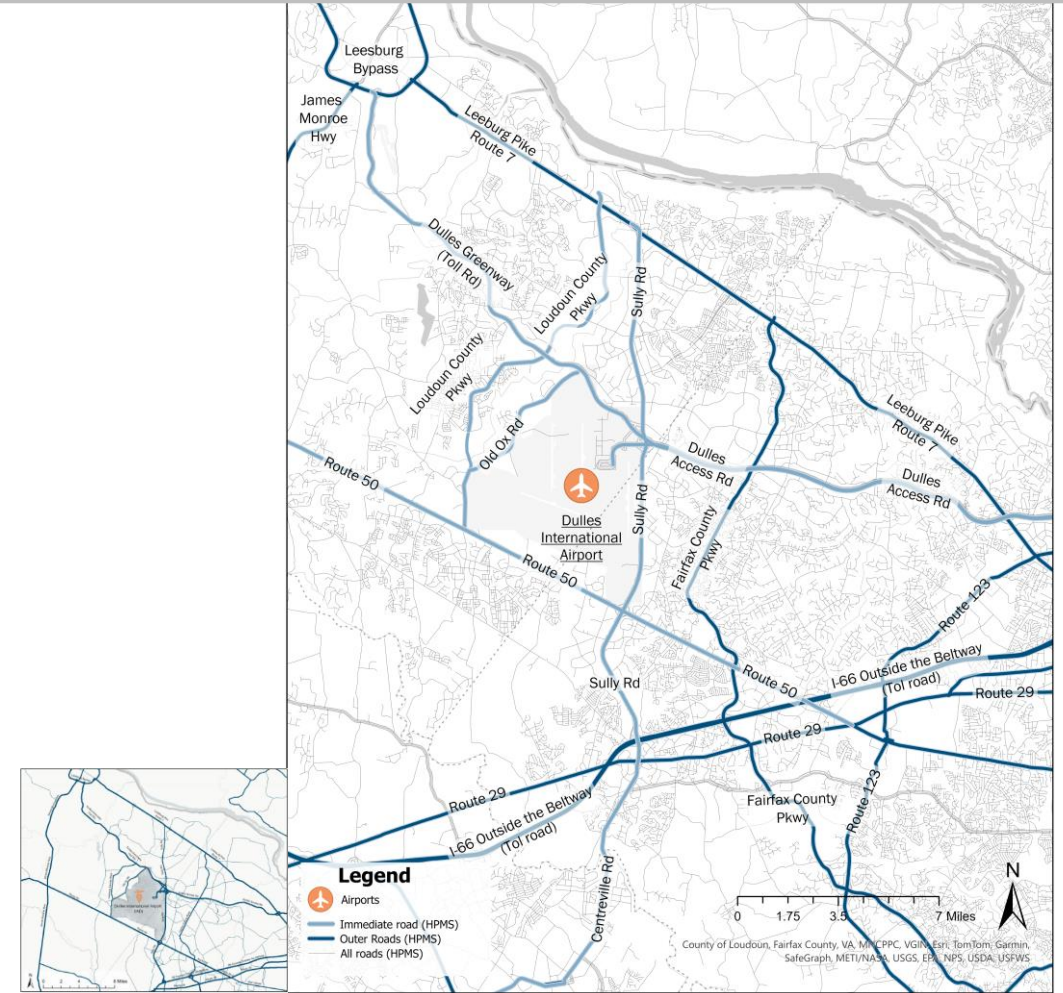


# Updated Maps





# Updated Maps Cont'd.



# Next step

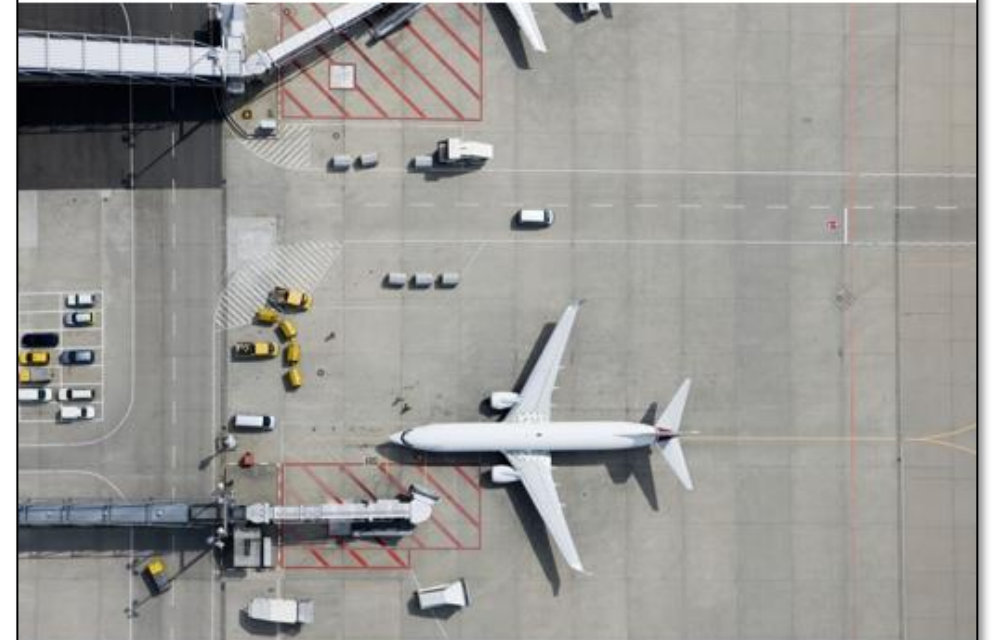
- Final document under review by Communications team
- Publish report on website
- Transmit report to FAA to close CASP 36



## WASHINGTON-BALTIMORE REGIONAL AIR CARGO STUDY - DRAFT

2022 Update

February 2025





## Olga Perez

Planning Program Specialist

(202) 962-3265

opelaiez@mwkog.org

[mwkog.org/tpb](http://mwkog.org/tpb)

---

Metropolitan Washington Council of Governments

777 North Capitol Street NE, Suite 300

Washington, DC 20002



National Capital Region  
**Transportation Planning Board**