

HOMELESSNESS IN METROPOLITAN WASHINGTON

Results of the Annual Point-in-Time Count and Regional Homelessness Strategies

Sam Kenney, COG Regional Homeless Systems Coordinator

COG Human Services Policy Committee
May 9, 2025

How Many People Are Experiencing Homelessness in our Region?

People Experiencing Literal Homelessness by Jurisdiction, 2021-2025*							
	2021	2022	2023	2024	2025	Change in Number of Persons 2021 - 2025	Percent Change 2021 - 2025
City of Alexandria	106	120	152	187	166	60	57%
Arlington County	171	182	213	243	271	100	58%
District of Columbia	5,111	4,410	4,922	5,616	5,138	27	1%
Fairfax County	1,222	1,191	1,310	1,278	1,322	100	8%
Loudoun County	80	99	220	303	252	172	215%
Montgomery County	577	581	894	1,144	1,510	933	162%
Prince George's County	537	571	659	658	608	71	13%
Prince William County	282	241	326	345	392	110	39%
TOTAL	8,086	7,395	8,696	9,774	9,659	1,573	19%

Source: COG 2025

*Totals for 2021-2023 have been revised to reflect the regional number without the City and County of Frederick.

Increase in Families and Single Adults Experiencing Homelessness

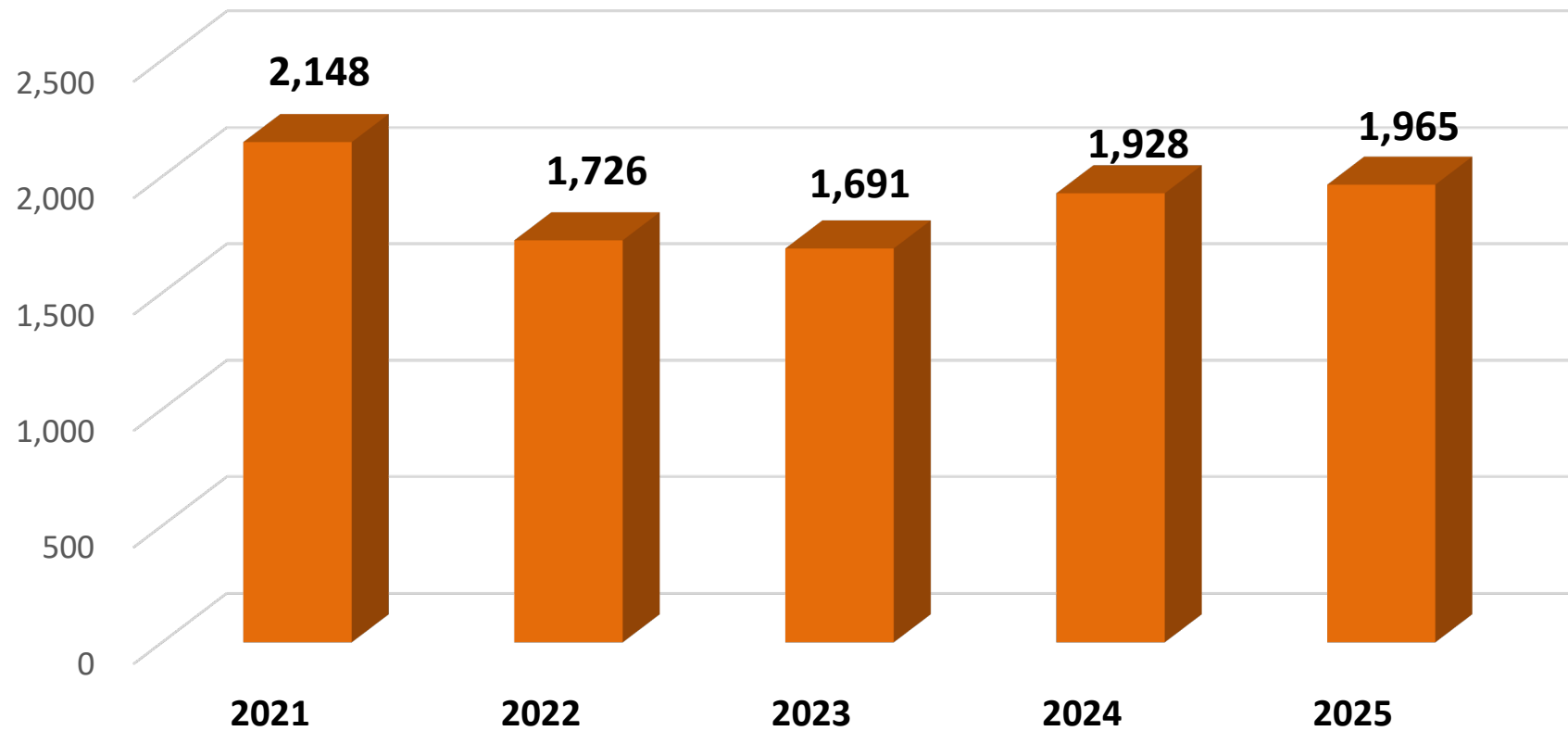
Household Composition					
		Total Persons in Households without Children	Total Persons in Households with Adults and Children	Total Persons in Households with ONLY Minor Children* (Unaccompanied Minors)	Regional Total
COG REGION**	2025	6,132	3,517	10	9,659
	2024	6,259	3,499	16	9,774
	2023	5,755	2,917	24	8,696
	2022	5,120	2,265	10	7,395
	2021	5,752	2,318	16	8,086
2021 - 2025 Percent Change		7%	52%	-6	19%

*Unaccompanied youth are shown as a total number, not percentage, due to the small numbers of persons counted. *Note: Children represent 60% of all people in homeless families.*

Chronic Homelessness

Single Adults Experiencing Chronic Homelessness

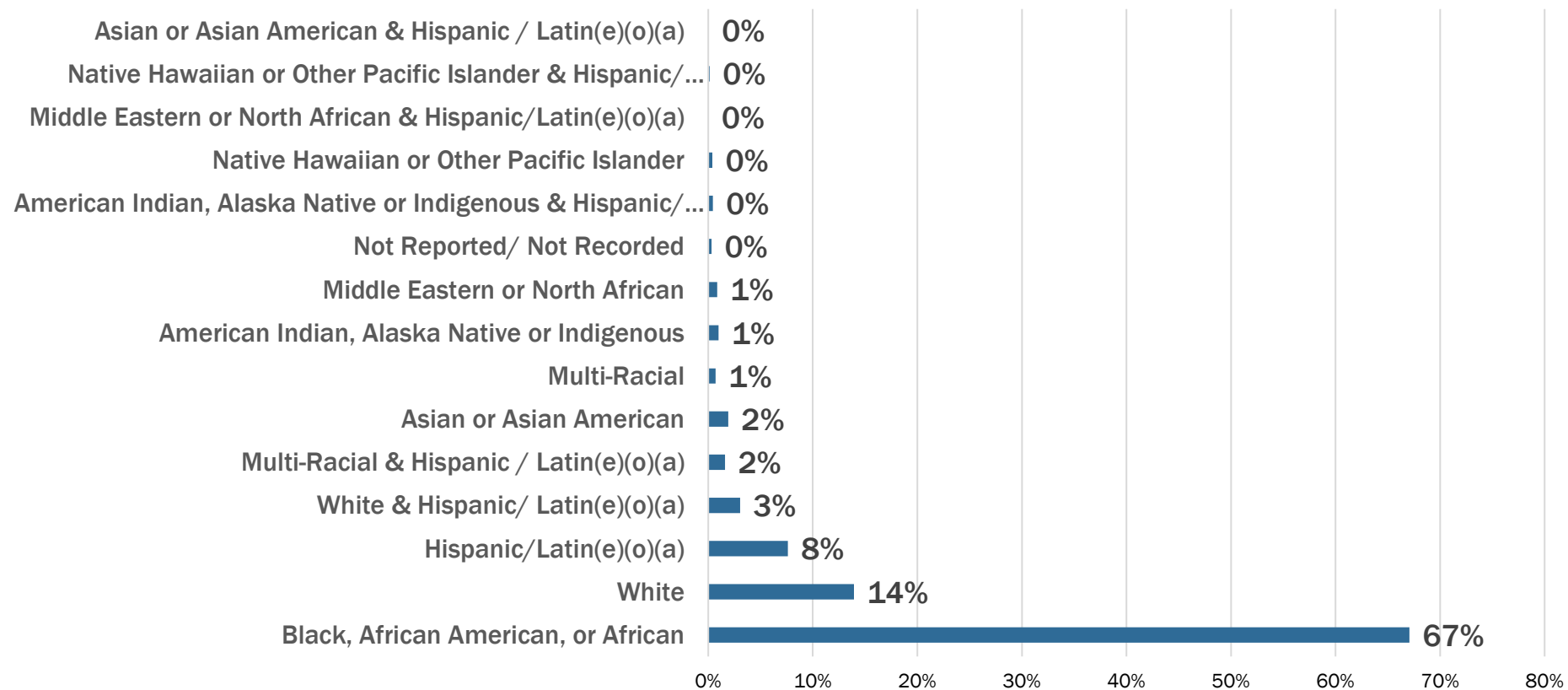
Source: COG 2025



Racial Disparities in Who Experiences Homelessness

Regional Homeless Single Adults Demographic Profile (Race and Ethnicity)

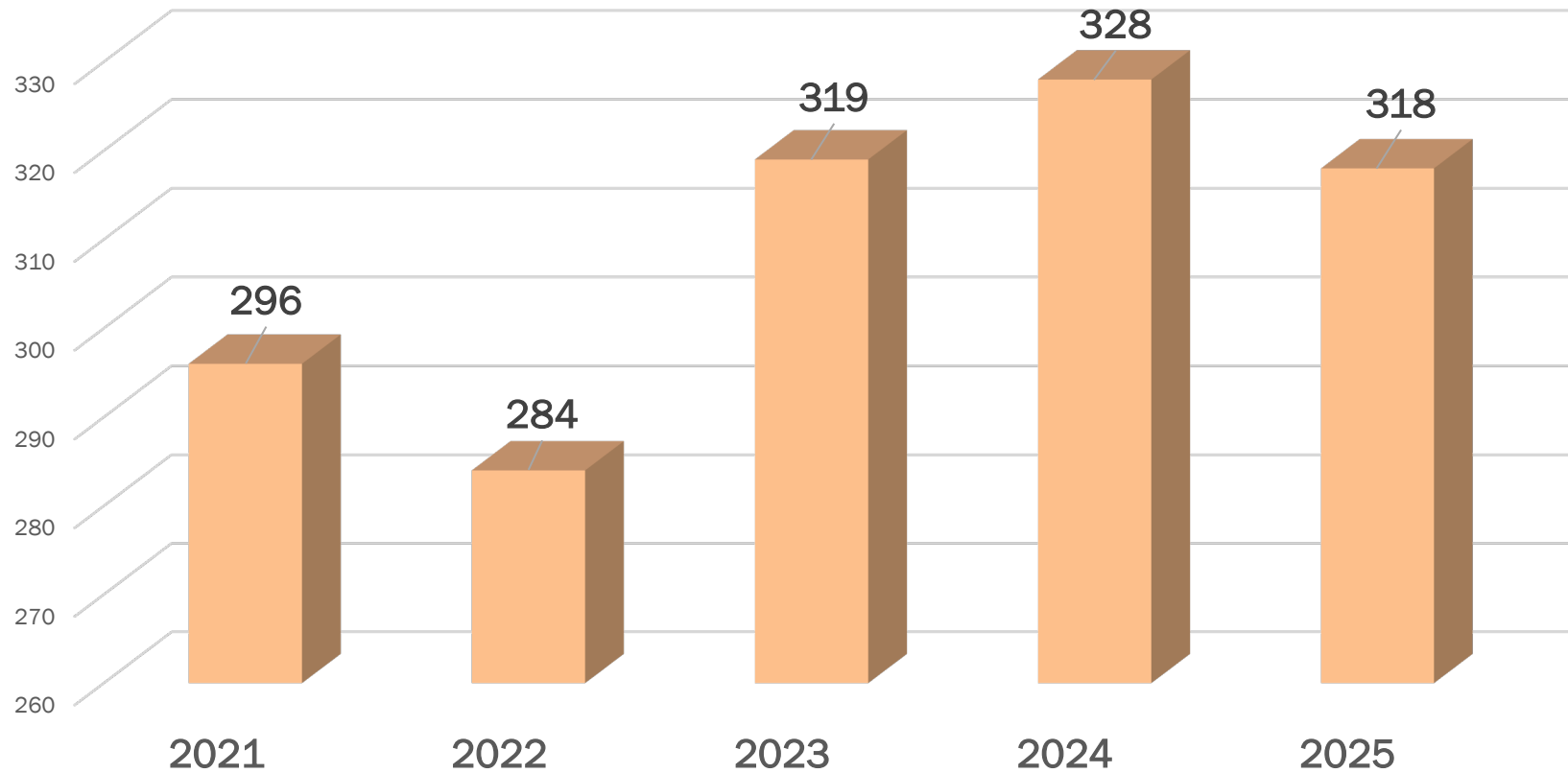
Source: COG 2025



Veteran Homelessness

Regional Total Number of Homeless Veterans

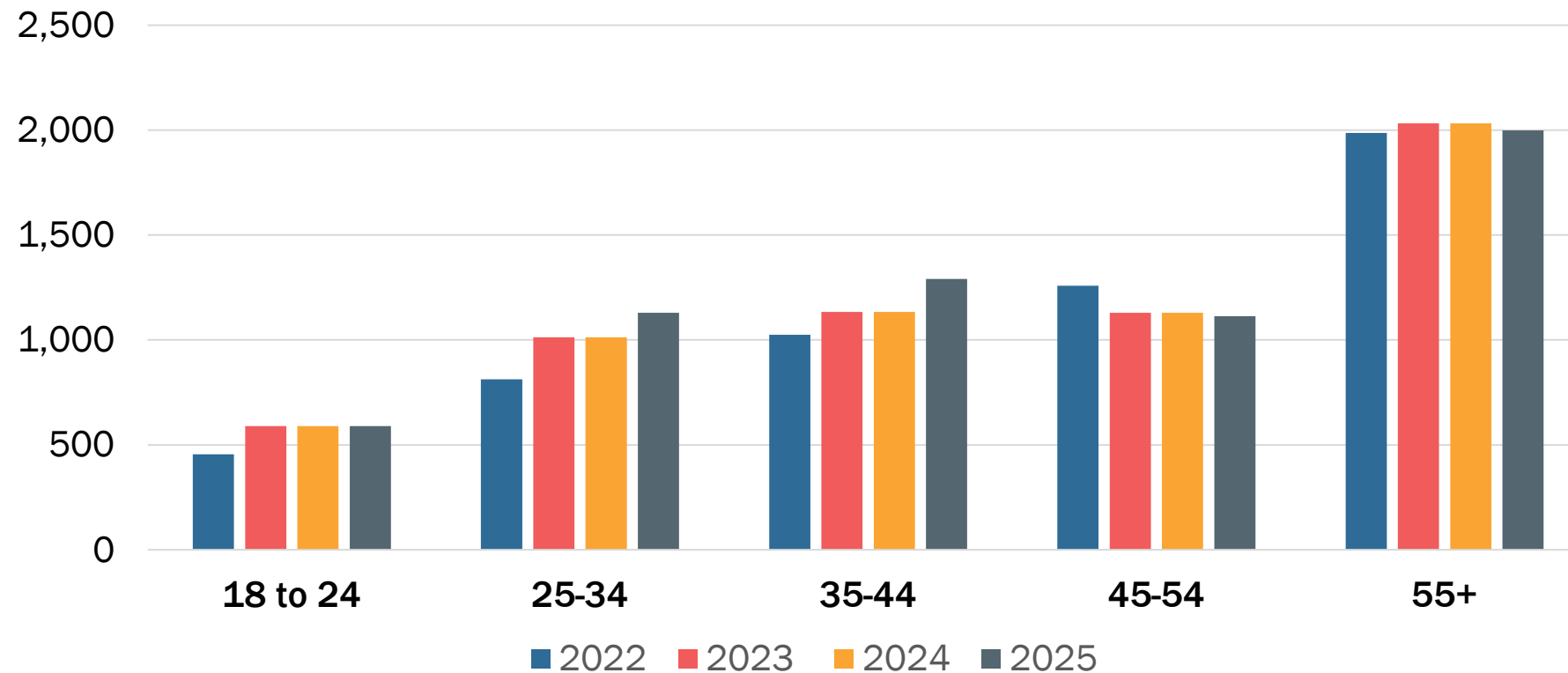
Source: COG 2025



More Seniors Are Experiencing Homelessness

Figure 9: Age Distribution of Single Adults Experiencing Homelessness

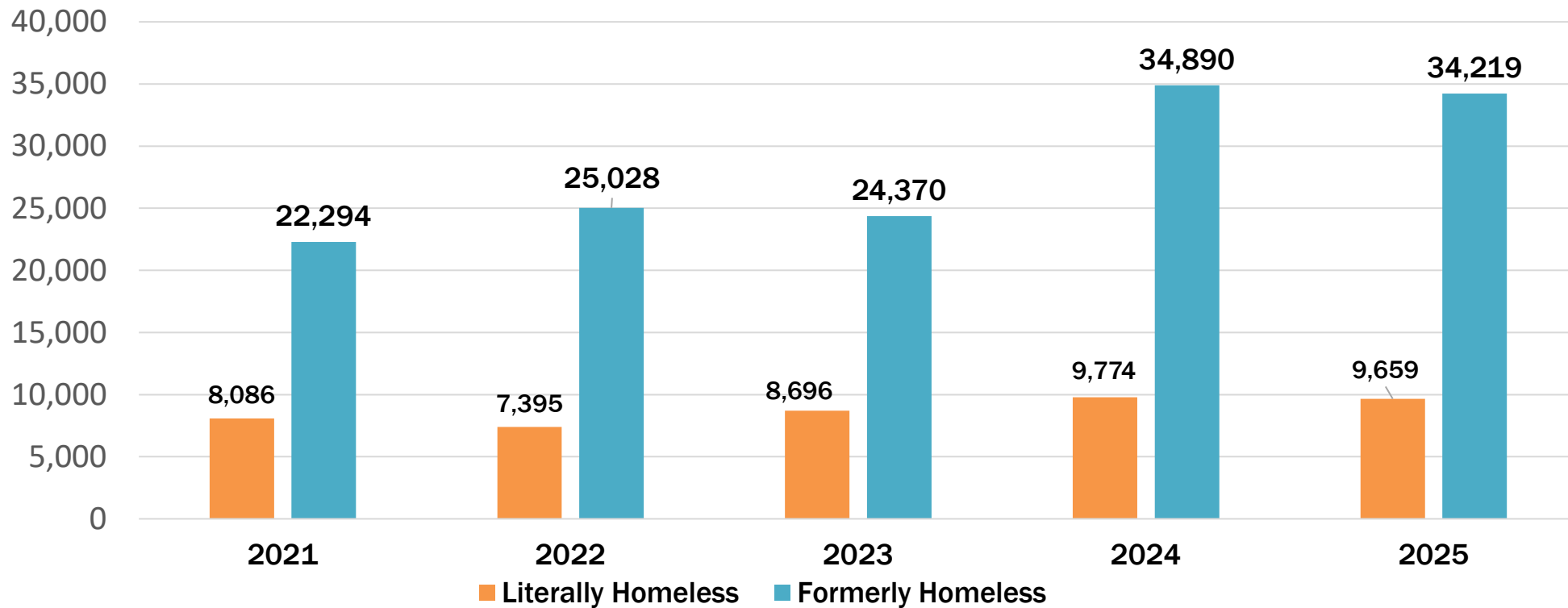
Source: COG 2025



Formerly Homeless: Regional Progress

Region's Literally and Formerly Homeless in Permanent Supportive Housing, Rapid Re-Housing, and Other Permanent Housing

Source: COG 2025



Metropolitan Washington
Council of Governments

Regional Collaboration in Real Time

Regional Coordination Collaborative Leadership Committee (RCCLC):

A leadership table advancing regional alignment in policy, practice, and partnerships.

- Tackles shared system challenges
- Supports strategic coordination
- Builds cross-jurisdiction trust

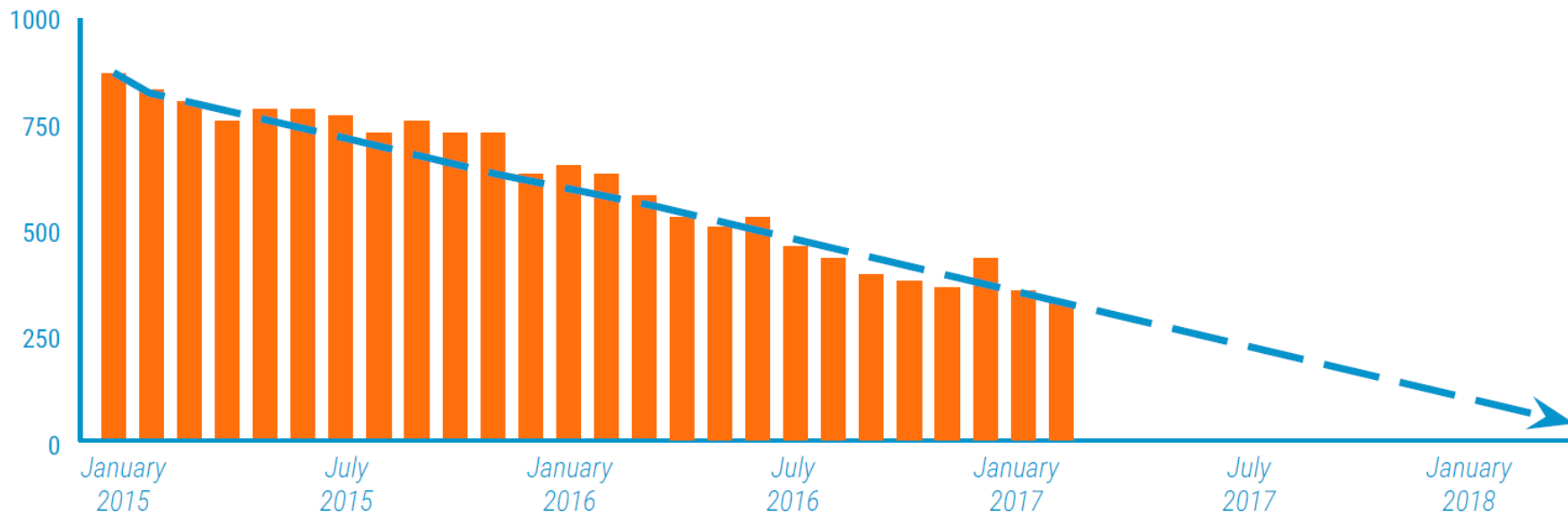
Regional Data Metrics Working Group:

Homeless Management Information System data leads strengthening consistency and insight.

- Aligns definitions and metrics
- Shares data best practices
- Tackles complex technical regional data questions

Beyond Point-in-Time: Community Solutions & Built for Zero

Built for Zero is a methodology and framework that supports coordinated, data-driven decision-making and fosters ongoing system improvement across homelessness response efforts.

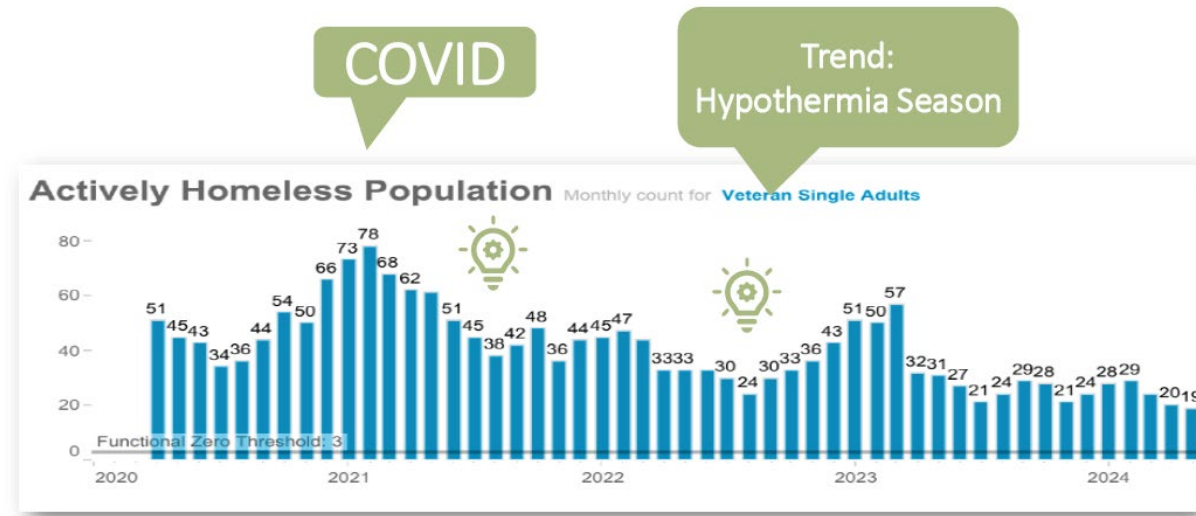


Beyond Point-in-Time: Community Solutions & Built for Zero

- **Regional leaders since 2015:** *Arlington County, the District of Columbia, and Montgomery County* helped lay the foundation for data-driven, system-wide collaboration. *Fairfax County* joined in **2018**.
- **Momentum builds in 2024:** *Alexandria, Loudoun County, Prince George's County, and Prince William County* joined BFZ through COG, reflecting a **growing alignment across the region**.
- **State-level partnership coming in 2025:** The **State of Maryland** is set to join as a **collaborative partner**, signaling a broader commitment to shared regional solutions.

Looking Ahead: Built for Zero

- *Data, Data, Data!*
 - New jurisdictions upload data monthly to Community Solutions regional tracker
- New jurisdictions work to achieve *Quality By-Name Data*
- September: Review progress from first 6 months and draft new 6-month action plan



Looking Ahead: Data Sharing

EXPAND

- Regional data sharing

ADVANCE

- Secure, privacy-centered data integration to guide regional strategies

STRENGTHEN

- Cross-system collaboration to connect homelessness data with broader health, behavioral health, and social services systems to address the root causes of homelessness.



Unique Challenges Ahead & Key Takeaways

Challenges

- **Federal changes may slow progress:** Shifts away from Housing First and restrictive grant terms could undercut local momentum.
- **Encampment actions ripple regionally:** Clearances in one area can displace people and overwhelm neighboring systems.

The Way Forward

- **Align regionally, act collectively:** Built for Zero and other shared strategies help jurisdictions coordinate for greater impact.
- **Expand deeply affordable housing:** Long-term housing with supportive services is key to reducing and ending homelessness across the region.



Sam Kenney

COG Regional Homeless Systems Coordinator

(202) 962-3312

skenney@mwkog.org

mwkog.org

777 North Capitol Street NE, Suite 300

Washington, DC 20002



Metropolitan Washington
Council of Governments