

What is a Comprehensive Transportation Analysis (CTA)?

A complete transportation network needs to support the people who use it. How will growth and change in Fairfax County impact your trip to the grocery store, walk to the neighborhood park, or bus ride to work? The Comprehensive Transportation Analysis (CTA) is a new way to assess the impacts of a proposed change, so Fairfax County ends up with streets that work for everyone.



1 Why is a CTA necessary?

To understand impacts to transportation because of a...



**Comprehensive
Plan amendment**



**Zoning
change**



**Corridor
study**

2 What is included in a CTA?

Assessment of walking, biking, transit and vehicle conditions with consideration for...

**How people
prefer to
get around**



**Location and
surrounding
land uses**



**What is built
and planned
to be built**



**Traffic and
roadway
capacity**



**Street, sidewalk,
bike and bus
network**

AND MORE!

3 How is the analysis conducted?

Measure impacts of proposed changes on all modes of transportation and determine if the impacts are acceptable, or if not, identify potential solutions.



4 When is the CTA finished?

Work with community and other stakeholders to determine if proposed solutions are acceptable. Brainstorm and recommend a way forward.

5 What happens next?

Improvements are recommended for the plan amendment, zoning application or corridor design.



**Comprehensive
Plan amendment**



**Zoning
change**



**Corridor
design**



Your input matters!

You can help shape the future of your community.



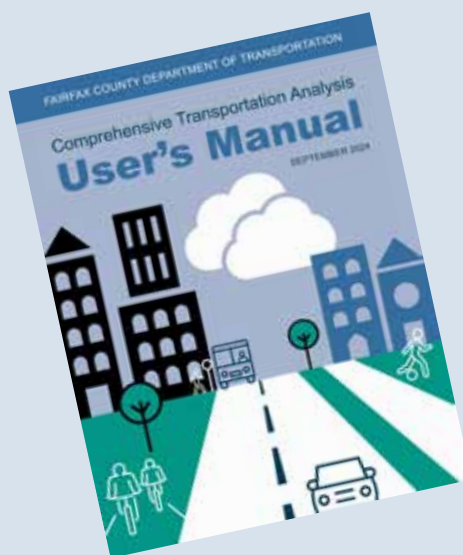
Speak up

Talk to your elected leaders and County staff about the transportation needs in your neighborhood.



Reach out

If there's a project in the works near you, contact us and we'll let you know how to get involved.



Learn more

You can find the CTA User's Manual at www.fairfaxcounty.gov/transportation/study/cta.



What Questions Should the CTA Answer?

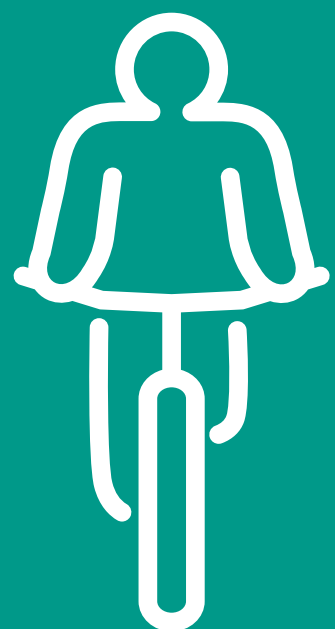
The CTA process assesses the multimodal impacts of comprehensive plan amendments, zoning changes, and corridor studies. Projects with more impactful changes require more analysis—and benchmarks for a successful project vary based on project location (e.g. urban area with Metrorail vs. suburban neighborhood).

What types of things are considered in a CTA?

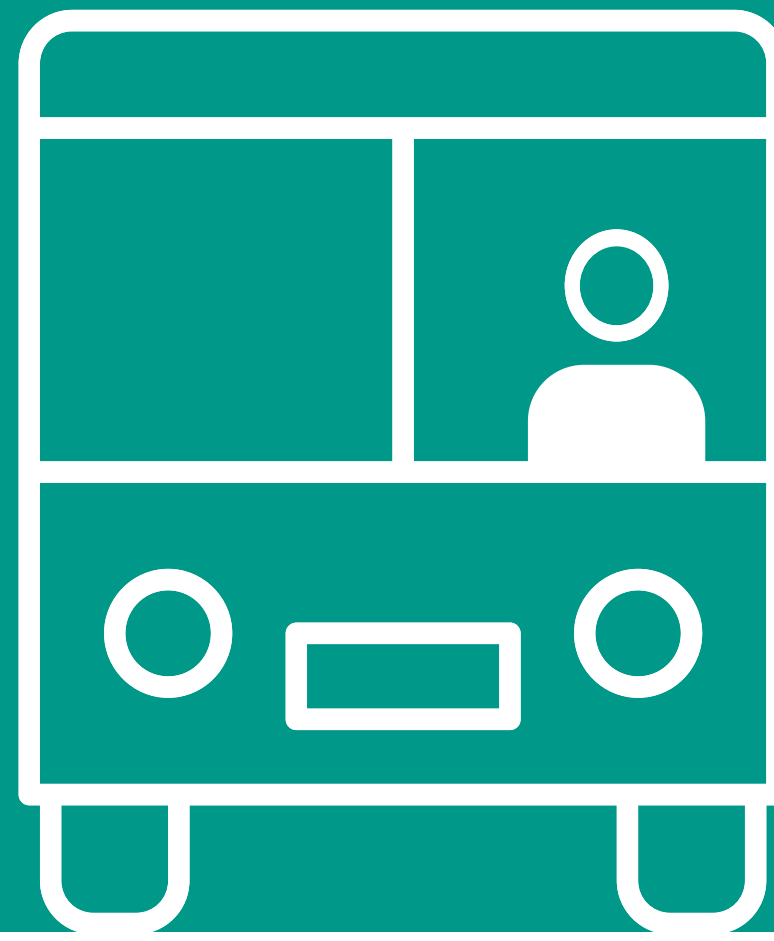
Where do people walk?
How long does it take?
Is it comfortable?



Are there places to bike?
Is biking stressful?



Are there transit stops?
Can people get there?
Is there a comfortable place to wait?



What are the critical streets and intersections?
Are they congested?
How can crashes be reduced?



What solutions might come out of these considerations?



Your input matters!

You can help shape the future of your community.



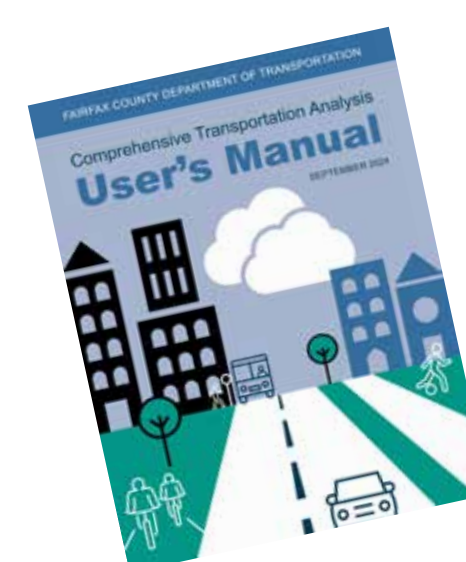
Speak up

Talk to your elected leaders and County staff about the transportation needs in your neighborhood.



Reach out

If there's a project in the works near you, contact us and we'll let you know how to get involved.



Learn more

You can find the CTA User's Manual at www.fairfaxcounty.gov/transportation/study/cta. Phone: 703-877-5600, TTY 711

