

CLIMATE PLANNING MID-COURSE REVIEW - APPROACH

Assessing Progress Toward Regional 2030 Climate Goals

Maia Davis
Metropolitan Washington Council of Governments (COG)
Department of Environmental Programs
Climate, Energy, and Air Program

January 27, 2025

Background and Purpose

- **COG Goals**

- Existing 2030 goal; Metropolitan Washington 2030 Climate and Energy Action Plan (2030 CEAP); Comprehensive Climate Action Plan (CCAP) development

- **ACPAC Memo on Goals**

- **CEEPC Considerations and Response**

- Conduct Mid-Course Review to assess progress toward meeting COG 2030 Climate and Energy Goals
- Use findings to help inform any possible considerations of establishing new goals and to assist with CCAP

- **Approach**

- Presenting today staff recommendations for how to conduct the review
- Seek the Committee's input

Approach

- **Goal:** Assess the status of goals, strategies, measures and actions toward the region's existing plan framework and targets.
- **Performance Indicators:** Identify the key metrics and indicators to examine closely to enable a reasonable assessment of progress.
- **Local Government Survey:** Summarize status of the collective priority climate actions in the region.

Details of Staff Proposed Approach

- Follow the 2030 Regional Climate and Energy Action Plan adopted in 2020
- Cross-check and align with Priority Climate Action Plan (PCAP) submitted to EPA in 2024
- Analyze 1-3 Performance Indicators for each Priority Climate Action Area
- Survey local jurisdictions on Priority Collaborative Actions
- Review of local goals and actions to get the region to 2030 goals
- Regional Climate and Energy Progress Dashboard update
- Mid-Course Review Report

ACTIONS TO REVIEW

- **Climate Action Area** = priority areas to identify performance indicators and survey questions
- **Priority Collaborative Actions** could translate to local government survey questions
- **CEEPC and ACPAC Input** – What are the priority areas for the Mid-Course Review?

2030 Plan Climate Mitigation Strategy

Climate Action Area	Action ID	Priority Collaborative Action
Planning	PL - 1	Advance Climate Planning and Track Progress
Equity	EQ - 1	Enable Equitable Planning Practices
	EQ - 2	Prioritize Sustainable Energy Access for All
Clean Electricity	CE - 1	Advocate for Aggressive Renewable Portfolio Standards
	CE - 2	Accelerate Development of On-Site Renewables
	CE - 3	Accelerate Deployment of Battery Storage
	CE - 4	Accelerate Development of Microgrids for Critical Infrastructure
	CE - 5	Accelerate Development of Large-Scale Off-Site Renewables
	CE - 6	Advocate for and Implement Community Choice Aggregation
Zero Energy Buildings	ZEB - 1	Expand Building Benchmarking Requirements
	ZEB - 2	Accelerate Deep Building Retrofits
	ZEB - 3	Enhance Green Building Codes and Policies to Facilitate Net Zero Energy Building Development
	ZEB - 4	Expand Proper Disposal and Leak Detection of Refrigerants
Zero Emission Vehicles	ZEV - 1	Expand Light-Duty Electric Vehicle Deployment
	ZEV - 2	Accelerate Electrification of Medium- and Heavy-Duty Vehicles
	ZEV - 3	Build Out Regional Electric Vehicle Charging Network
Mode Shift and Travel Behavior	MSTB - 1	Invest in Infrastructure that Increases Transit, Carpooling, and Non-Motorized Travel
	MSTB - 2	Bring Jobs and Housing Closer Together
	MSTB - 3	Enhance Options for Commuters
Zero Waste	ZW - 1	Implement Curbside Organics Recycling Programs
	ZW - 2	Reduce Solid Waste Generation
	ZW - 3	Build Markets for Circularity
Sequestration	SQ - 1	Strategically Plant New Trees on Publicly Owned Land
	SQ - 2	Enhance Regulatory Capacity to Manage Tree Canopy and Forest Protection
	SQ - 3	Enhance Incentives and Financing Mechanisms for Tree Planting and Preservation on Privately Owned Lands

Example Area of Analysis: Zero Energy Vehicles

Performance Indicator

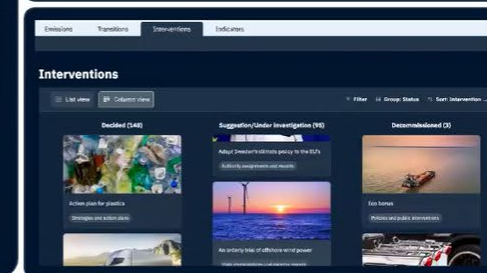
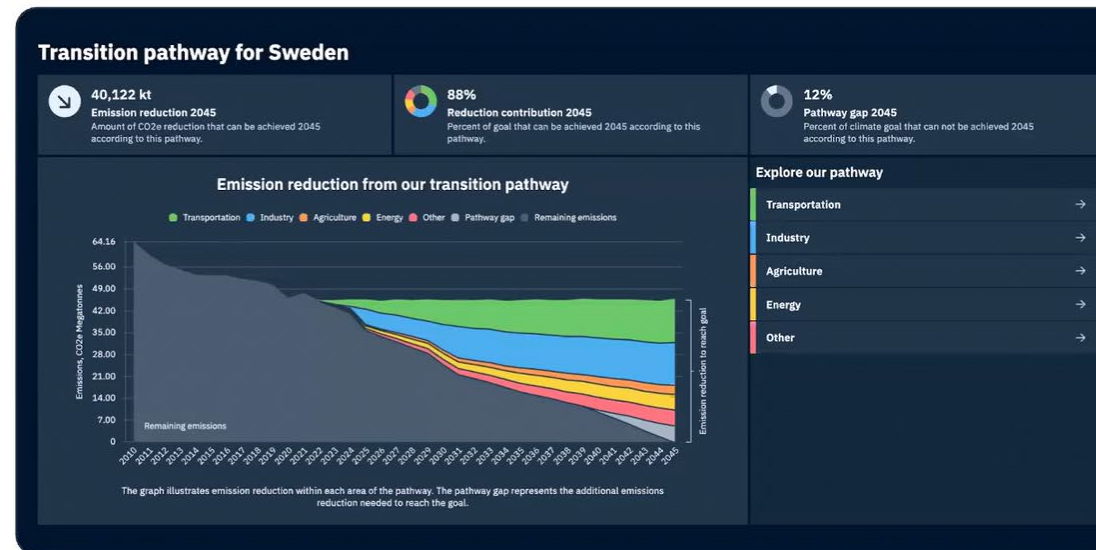
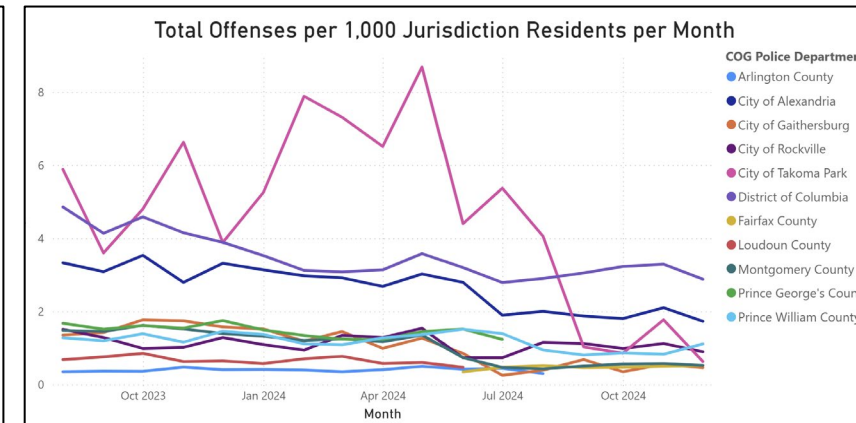
- # of electric vehicles (EV) 2005 - 2023
- # of EV charging stations and ports (2012 – 2024)

Supporting Local Actions Survey

- **Expand light-duty EV deployment** in the government fleet?...in the community?
- **Expand medium- and heavy-duty EV deployment** in the government fleet?...in the community?
- **Deploy EV charging stations** at government facilities?...to facilitate deployment in the community?
- Working toward the [Charging Smart](#) designation?

Communicating Results

- **COG Website:** Climate and Energy Progress Dashboard
- **ICLEI ClearPath 2.0:** new public dashboarding features coming in 2025
- **Mid-Course Review Report:** summarizing performance indicators, survey results, and highlight local best practices



DRAFT Timeline

Task	2025 Midcourse Review Activities
Q1	<ul style="list-style-type: none">• CEEPC, BEEAC, and ACPAC input on local government survey and performance indicators• Finalize and send out local government survey• Performance indicator data collection
Q2	<ul style="list-style-type: none">• Collect and analyze local government survey results• Develop example local BMPs to highlight in report• Continue performance indicator data collection and analysis
Q3	<ul style="list-style-type: none">• Continue performance indicator data collection and analysis• Local government goals and actions review• Presentation to CEEPC, BEEAC, and ACPAC on survey results and performance indicator results
Q4	<ul style="list-style-type: none">• Presentation to CEEPC, BEEAC and ACPAC on draft Midcourse Review Report

Maia A. Davis

Senior Environmental Planner

(202) 962-3227

mdavis@mwkog.org

mwkog.org

777 North Capitol Street NE, Suite 300

Washington, DC 20002

The following slides contain additional examples of priority action areas, performance indicators, survey questions, dashboard examples, and resources.

Climate Mitigation Planning and Equity

Performance Indicator

- % reduction in GHG emissions 2005 - 2023
- Drivers of GHG change 2005 - 2023

Supporting Local Actions Survey

- **Plan to reduce GHG emissions** at government facilities?...community-wide?
- **Track GHG emissions** for government operations?...community wide?
- **Equitable planning practices** during development and implementation of climate plans?
- GHG plan(s) prioritize providing **sustainable and equitable energy access for all?**

Clean Electricity

Performance Indicator

- How clean is the electric grid 2005 – 2023
- # and capacity of grid connected renewables 2009 – 2024

Supporting Local Actions Survey

- **Accelerate the development of renewables** at government facilities?...in the community?
- **Accelerate the deployment of battery storage** at government facilities?...in the community?
- **Accelerate development of microgrids** at government facilities?...in the community?
- **Power Purchase Agreements (PPAs)** for government facilities?
- **Accelerate development of large-scale off-site renewables?**
- **Community choice aggregation (CCA)** program?
- Earned a [SolSmart](#) designation?
- Earned [EPA Green Power Partner](#) or Community?

Zero Energy Buildings

Performance Indicator

- # of green buildings 2005 – 2024
- Building energy consumption trends 2005 – 2024

Supporting Local Actions Survey

- **Energy benchmarking** for government facilities?...in the community?
- **Deep building retrofits** at government facilities?...in the community?
- **Net zero energy building codes and policies** for government facilities?...in the community?
- **Proper disposal and leak detection of refrigerants** for government facilities?....for the community?

Mode Shift and Travel Behavior

Performance Indicator

- Vehicle miles travelled (VMT) and VMT per capita
- % of commuters that teleworking regularly or occasionally

Supporting Local Actions Survey

- Invest in infrastructure that increases transit, carpooling, and non-motorized travel?
- Bring jobs and housing closer together?
- Enhance options for commuters?
- Earned the [Bike Friendly](#) Community designation?

Zero Waste

Performance Indicator

- regional recycling rate (%)

Supporting Local Actions Survey

- Implement a **curbside organics recycling program**?
- **Reduce solid waste generation** at government facilities?...in the community?
- Invest in composting infrastructure or waste collection systems infrastructure to enhance recycling?
- Local **single-use plastic and polystyrene bans**?
- Support **building a market for circularity**?
- Working toward a **zero waste goal** or [Zero Waste Community](#) Certification?

Sequestration

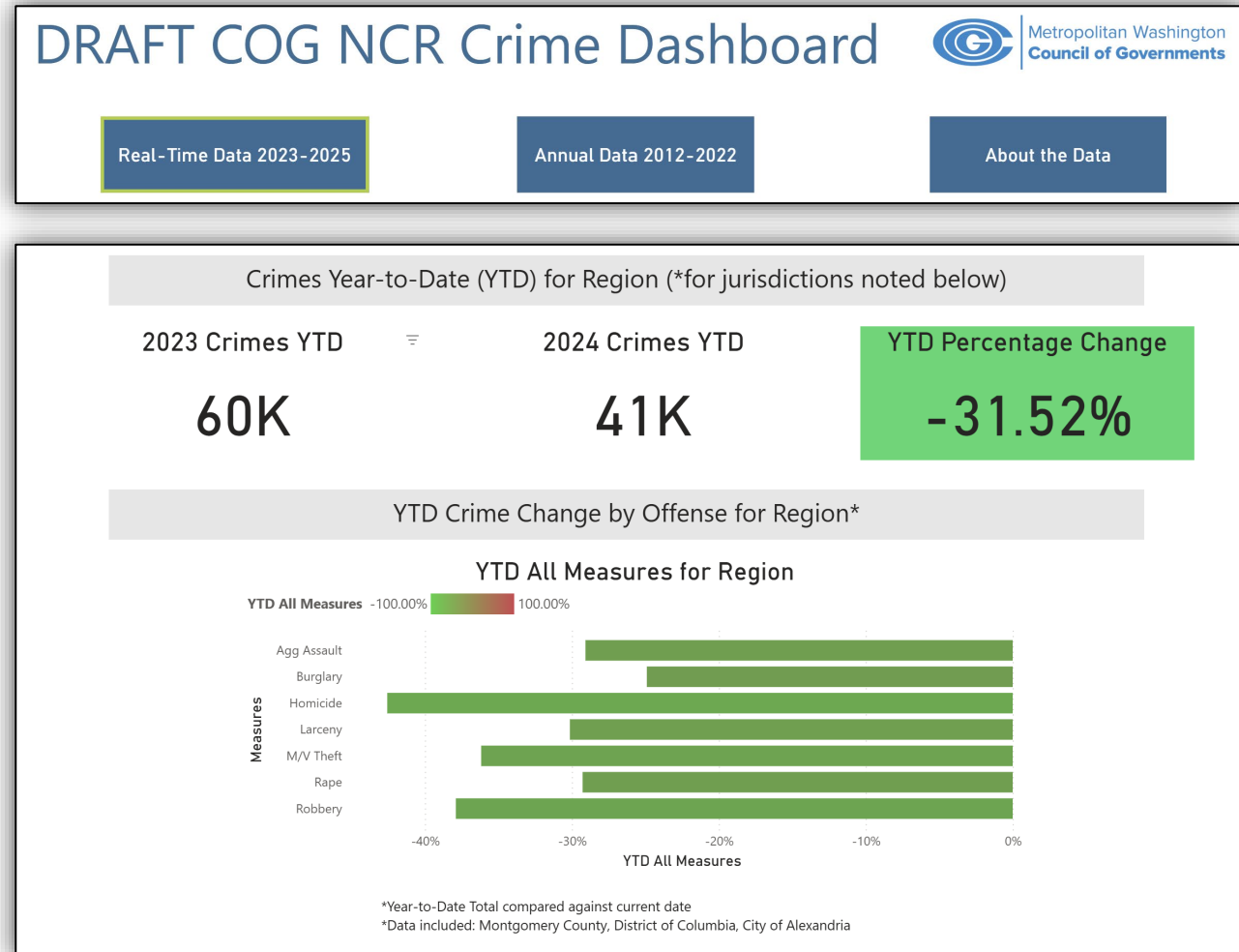
Performance Indicator

- MTCO₂e sequestered and % of emissions offset by forests and trees
- Regional tree canopy coverage (%)

Supporting Local Actions Survey

- Adopted **tree canopy/forest cover goal**?
- Strategically **plant new trees on publicly owned land**?
- **Enhance regulatory capacity to manage tree canopy and forest protection**?
- Offer or promote **incentives and financing mechanisms for tree planting and preservation on privately owned lands**?
- Designated a [Tree City USA](#)?

COG Draft Interactive Dashboard Example



COG Draft Interactive Dashboard Example

Select Jurisdiction(s) and Crime(s) Data per Month

Reset All Selections



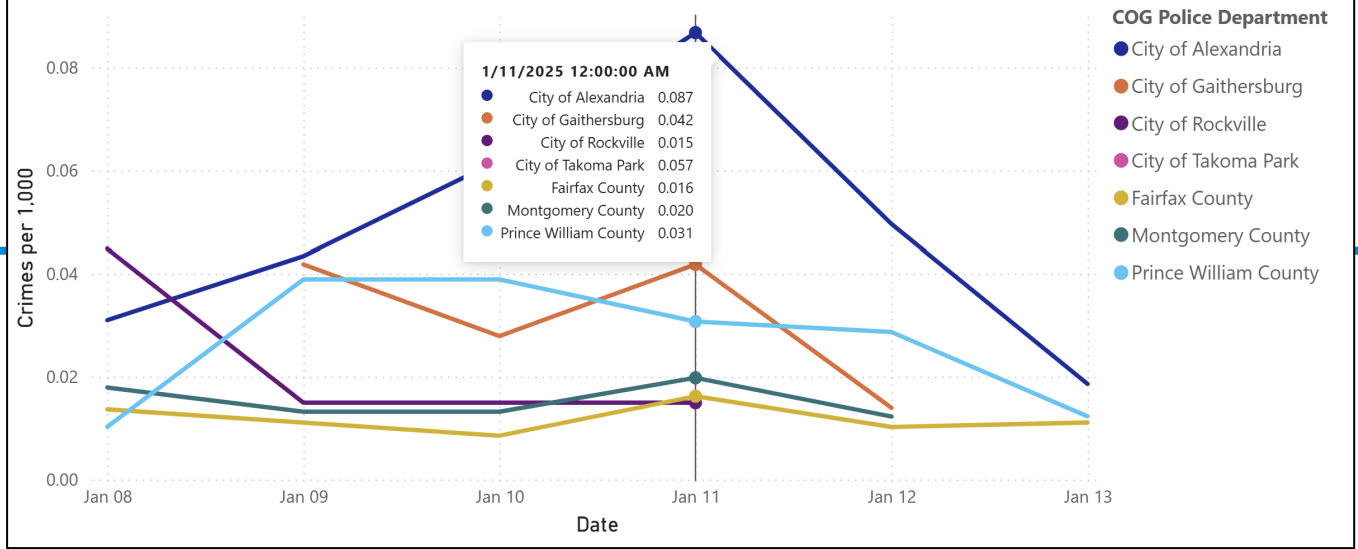
Choose Jurisdiction(s) (click to select or deselect)

Select all	City of Rockville	Loudoun County
Arlington County	City of Takoma Park	Montgomery County
City of Alexandria	District of Columbia	Prince George's County
City of Gaithersburg	Fairfax County	Prince William County

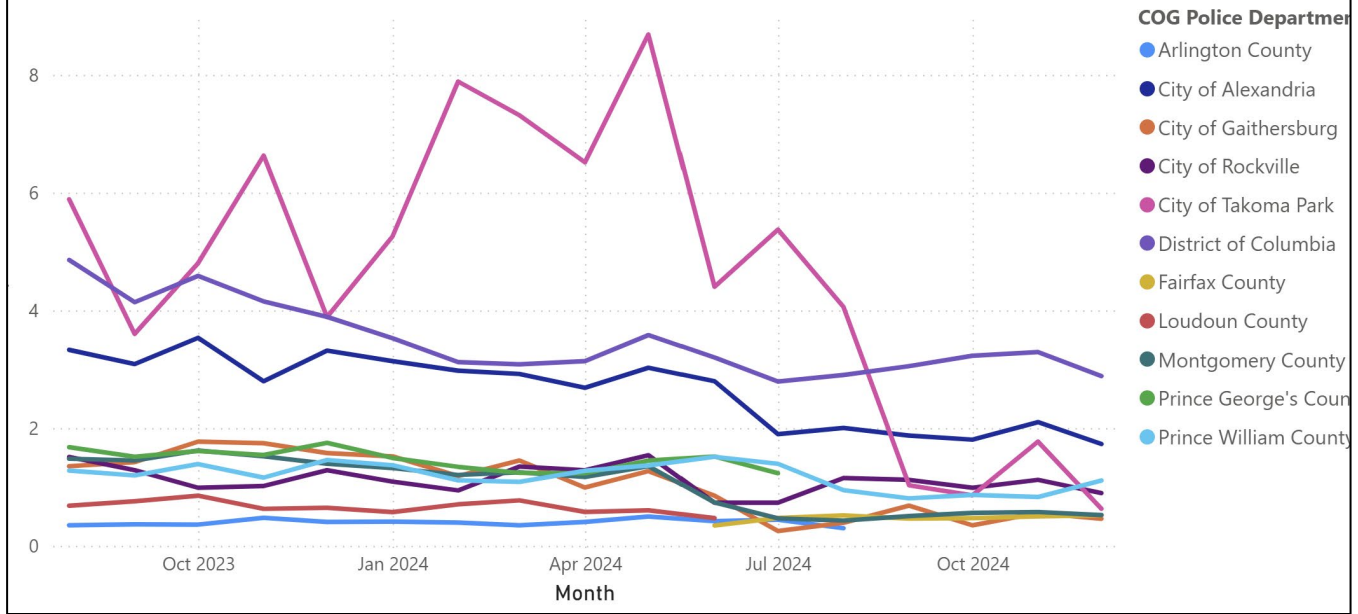
Choose a Crime Group

Agg Assault	Burglary	Homicide	Larceny	M/V Theft	Rape	Robbery	Total Offenses	Total Property Crimes	Total Violent Crimes
-------------	----------	----------	---------	-----------	------	---------	----------------	-----------------------	----------------------

Total Offenses per 1,000 Jurisdiction Residents Last 7 Days



Total Offenses per 1,000 Jurisdiction Residents per Month

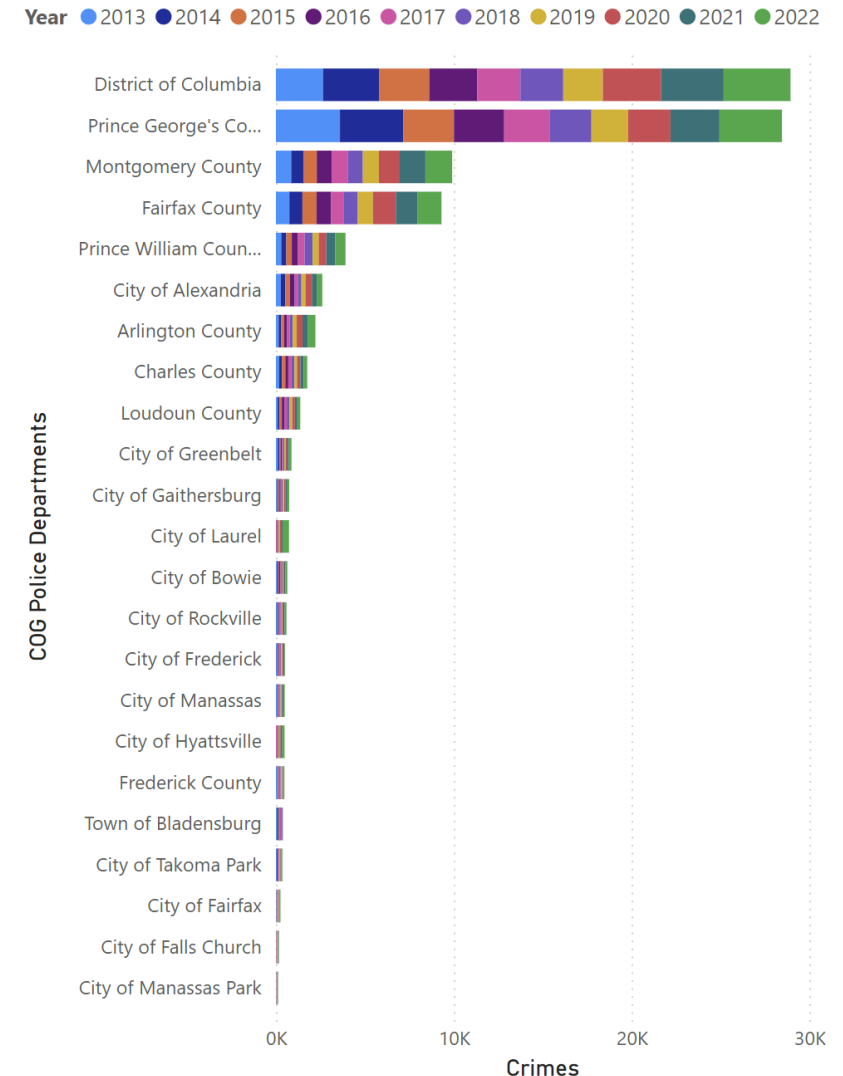


COG Draft Interactive Dashboard Example

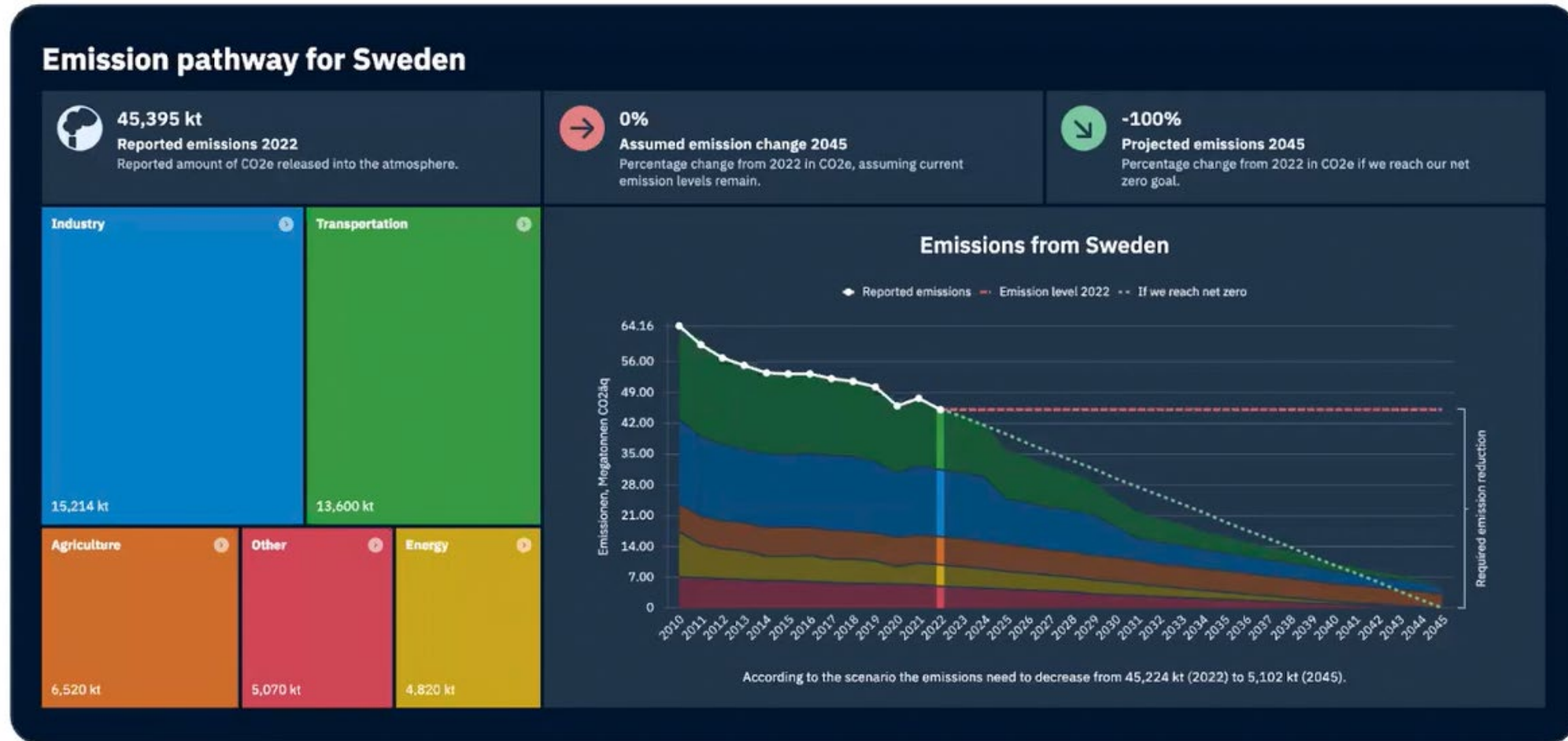
M/V Theft Total Per Year

COG Police Departments	2013	2014	2015	2016	2017	2018	2019	2020	2021	2022
Arlington County	156	145	161	167	143	171	227	323	313	412
Charles County	187	148	194	167	181	160	151	187	187	198
City of Alexandria	277	253	254	268	178	202	233	359	268	315
City of Bowie	69	67	46	61	77	49	55	43	58	118
City of Fairfax	23	18	20	19	20	26	28	34	31	38
City of Falls Church	7	11	13	16	12	13	22	29	29	24
City of Frederick	61	38	52	48	43	51	53	70	54	38
City of Gaithersburg	73	56	67	71	52	69	72	87	98	103
City of Greenbelt	107	84	66	73	67	72	75	71	112	149
City of Hyattsville					78	60	61	68	90	129
City of Laurel					57	78	78	75	88	359
City of Manassas	61	30	34	47	48	41	44	52	63	75
City of Manassas Park	12	8	10	7	10	11	12	20	14	26
City of Rockville	61	55	34	49	53	62	39	68	78	95
City of Takoma Park	42	53	32	33	30	25	25	32	40	53
District of Columbia	2,653	3,141	2,827	2,700	2,425	2,407	2,228	3,275	3,515	3,761
Fairfax County	757	733	792	812	702	806	857	1,283	1,205	1,362
Frederick County	79	33	48	56	46	41	51	30	54	41
Loudoun County	100	107	128	136	142	153	151	149	140	163
Montgomery County	861	705	732	837	919	833	905	1,167	1,444	1,507
Prince George's County	3,601	3,553	2,856	2,822	2,575	2,331	2,070	2,375	2,754	3,513
Prince William County	300	285	307	325	396	454	341	423	509	571
Town of Bladensburg	72	82	62	48	71	52				
Total	9,559	9,605	8,735	8,762	8,325	8,167	7,778	10,220	11,144	13,050

M/V Theft per Jurisdiction per Year

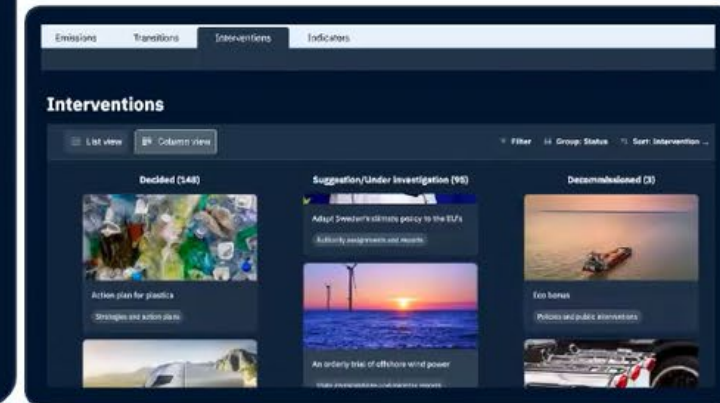
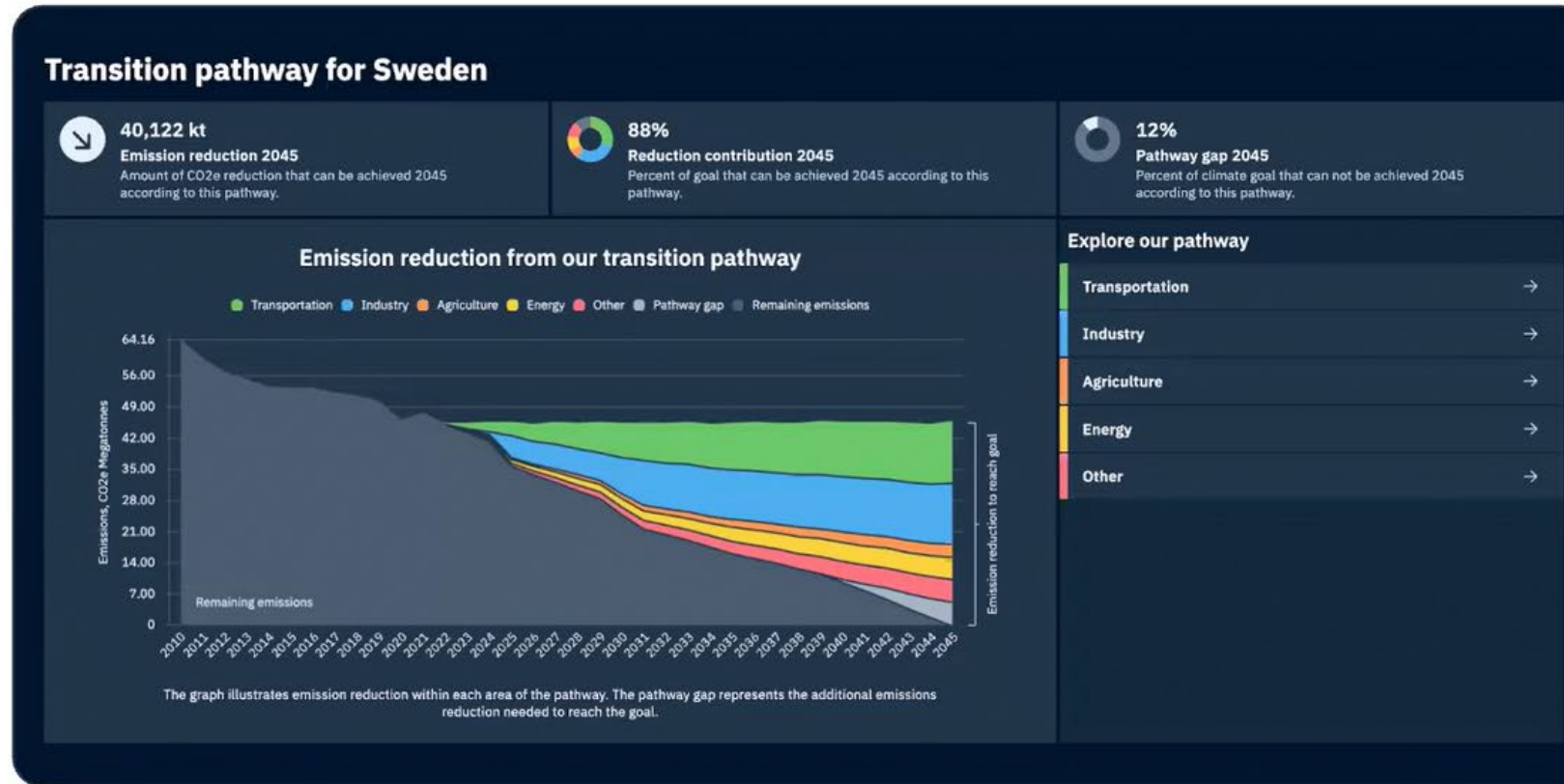


ICLEI/ClimateView Essential Dashboard



Source: ClearPath 2.0 Introduction Webinar

ICLEI/ClimateView Advanced Dashboard



Source: ClearPath 2.0 Introduction Webinar

Resources

- [Metropolitan Washington 2030 Climate and Energy Action Plan](#)
- EPA Climate Pollution Reduction Program (CPRG) [Metropolitan Statistical Area \(MSA\) Priority Climate Action Plan](#) (PCAP)
- COG [Annual Climate and Energy Progress Reports](#) 2010 – 2015
- Local and Regional [GHG Inventories](#)
- COG Static [Climate and Energy Progress Dashboard](#)
- ICLEI [ClearPath 2.0](#)