



TPB'S ENHANCED TRAVEL MONITORING PROGRAM UPDATE

Ian Newman, AICP
TPB Program Manager, Travel Monitoring and Planning Assistance

Regional Public Transportation Subcommittee
June 24, 2025



National Capital Region
Transportation Planning Board

Agenda Item #4

Program Vision and Goals

- **Program Vision:** Design and implement a program that informs the TPB, TPB member agency staff, TPB staff, and other regional partners and individuals on the key indicators concerning comprehensive, and multimodal, regional travel trends across various transportation-related categories.
- **Program Goal:** Create a dynamic, interoperable tool that captures a measurable snapshot of the comprehensive transportation network in the region.
- **Program Milestone:** Present this program to the TPB Technical Committee (completed 6/6/2025) for approval.
- **Program End Milestones:** (1) Host the Travel Monitoring Program's contents online in an interactive environment for internal use as well as for TPB's partners and stakeholders. (2) Standup the Travel Monitoring Subcommittee (name is TBD).



Categories of Metrics

- A total of seven (7) categories containing applicable metrics of investigation for the program, include:
 - Safety
 - Asset Management
 - Congestion Management
 - Economic Development
 - Environmental Considerations
 - Project Investments
 - Miscellaneous



Timelapse shot of I-95 (Northern Virginia Transportation Alliance)



Metrics Considerations

As the metrics are considered and identified for the program, they are currently, temporarily grouped into three categories that will be used to assign priority and schedule for development:

1. Minimum Metrics (MM):

- These metrics form the foundation of a travel monitoring program.

2. Ought-to-Have Metrics (OM):

- These are metrics that a travel monitoring program should have, but they are the not necessary metrics to form the foundation of a monitoring program.

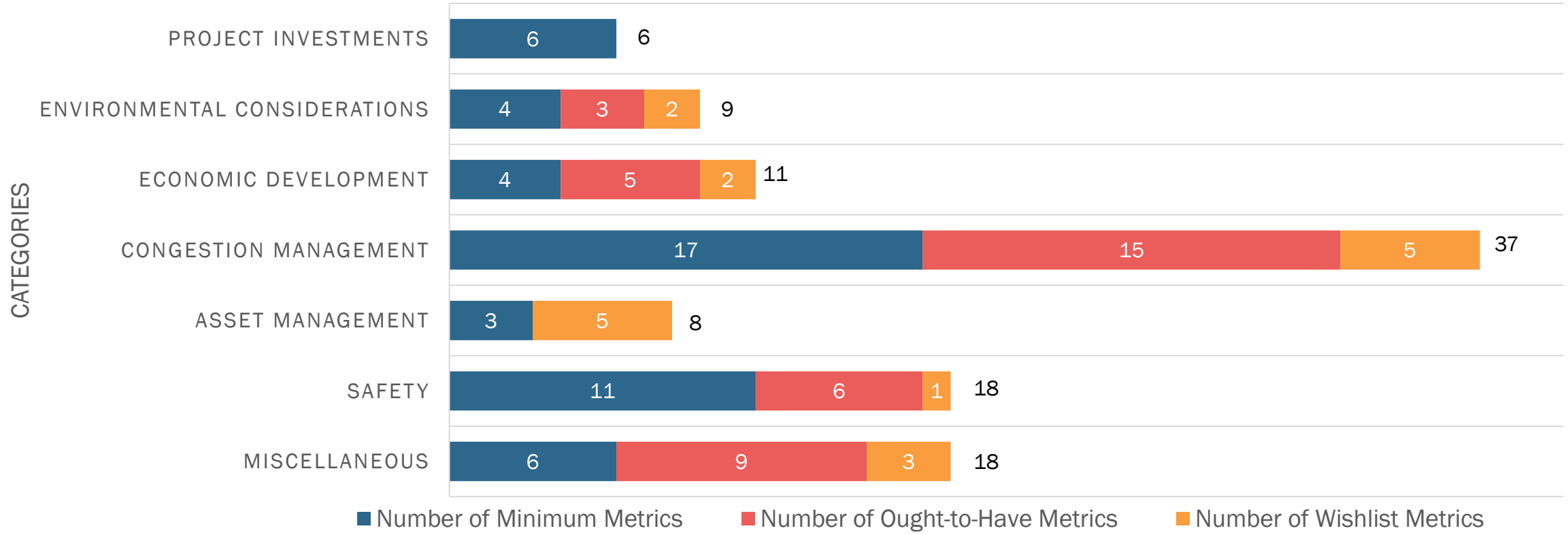
3. Number of Wishlist Metrics (WM):

- These are metrics that would be intelligent to implement, time and data permitting.



Current Representation of Travel Monitoring Categories + Metrics

TRAVEL MONITORING CATEGORIES AND COMPRISING METRICS



Status of Metrics

- 51 Minimum Metrics (MM) have been identified with data sources mapped.
- Numerous Ought-to-Have Metrics (OM) and Wishlist Metrics (WM) have been identified and mapped.
- **Example MM:**
 - Total transit-related collisions (Safety category)
- **Example OM:**
 - Total vehicles parked at park and ride facilities/WMATA garages (Congestion Management category)
- **Example WM:**
 - Average weekday bikeshare ridership data from rental kiosks within 1 mile of HCTs (Congestion Management category)



Key Considerations

- **Target Audience:**
 - TPB, member agencies, staff, partners & stakeholders
- **Purpose of Travel Monitoring:**
 - Track: congestion management (1); mode share (2); air quality compliance (3); safety measures and performance (4)
 - Track targets and trendlines to achieve set targets across key metrics
- **Potential MPOs for Comparison (*across certain metrics*):**
 - Boston, Dallas, Philadelphia, Atlanta, Chicago, Houston
- **Data Management Framework:**
 - GIS databases as standardized data storage protocol

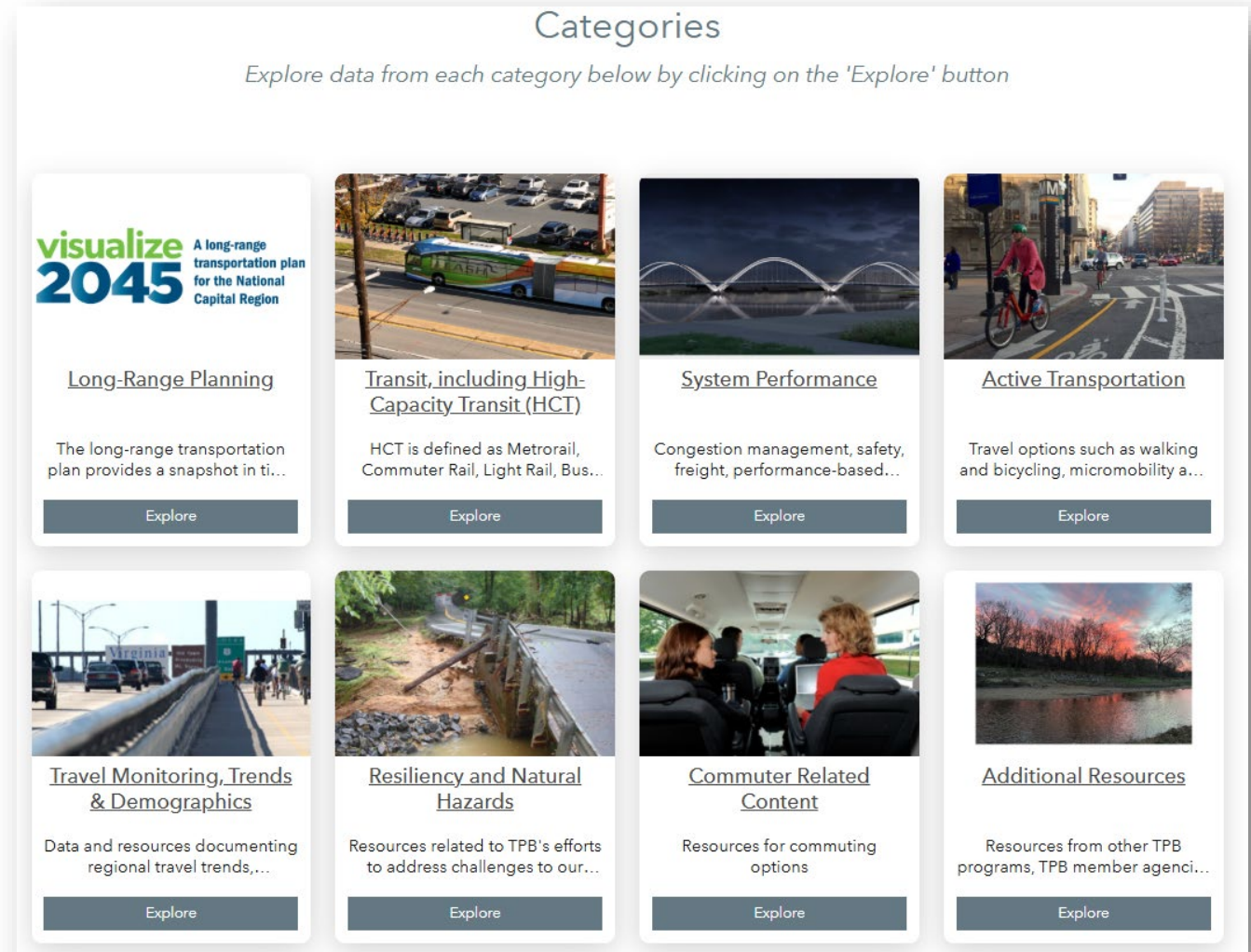


WMATA Gallery Place/Chinatown Station (Alex Wong/Getty Images)



Integration with TPB's online resources

- Will be accessible through TPB's TPB Resources Application Page (TRAP)
- <https://trap-mwcog.hub.arcgis.com/>



Next Steps



Source: District Department of Transportation

- Continue coordination work with internal Subject Matter Experts (SMEs) and staff leadership on data requirements, potential staff technical skill utilization, and data visualization suggestions for the program
- Obtain input from members of technical subcommittees
- Identify program oversight responsibilities, which will likely entail recommendation to establish a new Travel Monitoring Subcommittee



Next Steps (Continued)



Source: Virginia Department of Transportation

- Convene program oversight group
- Program implementation
- *Note:* Travel monitoring would incorporate the efforts of the Congestion Management Process (CMP) program, as the CMP feeds into travel monitoring in addition to being its stand-alone program



Ian Newman, AICP

TPB Program Manager, Travel Monitoring and Planning Assistance

(202) 962-3341

inewman@mwkog.org

mwkog.org/tpb

Metropolitan Washington Council of Governments

777 North Capitol Street NE, Suite 300

Washington, DC 20002



National Capital Region
Transportation Planning Board