

# TRANSPORTATION PLANNING BOARD PRIORITIES

---

## For 2016

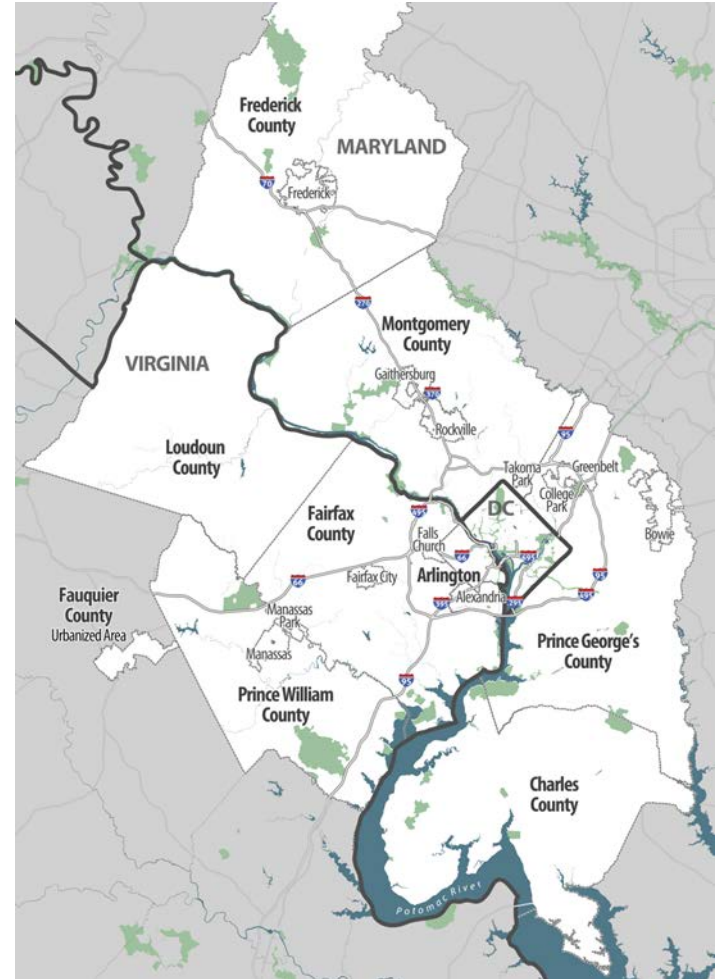
Timothy Lovain  
Transportation Planning Board Chairman

COG Board of Directors  
June 8, 2016



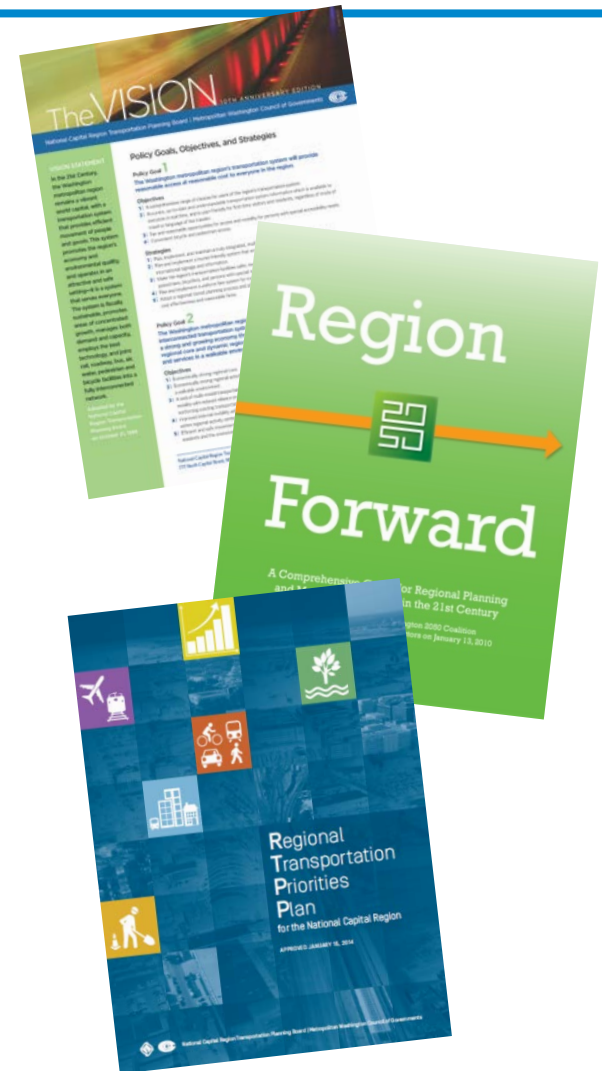
# About the TPB

- Region's Federally designated Metropolitan Planning Organization
- Ensure existing and future expenditures of federal transportation funds are based on a “continuing, cooperative, and comprehensive” (3C) planning process.
- Federally funded; federally mandated planning tasks
  - Long Range Plan, Transportation Improvement Program, Air Quality Conformity analyses, etc.
- Neither funds nor approves funding for project construction



# TPB's Planning Approach

- Collaborate – different levels of governments, different disciplines, interested parties, and residents
  - “Tristate” membership – 21 jurisdictions; 6 transportation agencies; 5 legislative bodies; 37 voting members  
6 Ex officio
- Consensus – diversity is a strength
- Define broadly accepted policy principles
- Partnership – MWCOG, MWAQC, NCPS, NPS, PD-TAC, AMPO, etc.
- *Think Regionally – Act Locally*



# Chairman's Priorities for 2016

---

- Improved transportation system performance
- Better Traffic Incident Management
- Safer / More Reliable WMATA (Metro)

# Improved Transportation System Performance (Long Range Plan)

---

- CLRP - Performance Outcomes: Not satisfactory
- Presently – congested; limited mobility/accessibility
- Forecast – significant growth
- Underinvested in capacity expansion
- Regional transportation priorities under represented
- Task Force – 2 pronged approach
- Champion funding for limited set of multi-modal regional priority projects
- Better integration of regional priorities in local project selection

# Better Traffic Incident Management

---

- Incidents affect Safety, Reliability, Efficiency
- Cost-effective means to realize additional capacity
- Capacity building via cooperation
- Metropolitan Area Transportation Operations Coordination (MATOC)
  - “tri state” plus WMATA
- Traffic Incident Response Forum
  - data-driven response
  - policies and resources
  - best practices from around the country

# Safer More Reliable Metro System

---

- Regional Asset / System Backbone
- Restore to World Class
  - Supporting transportation network
  - Complimentary land use (TOD)
  - Adequate funding – State of Good Repair and Expansion
- WMATA Briefings – 2015
- Station Access and Joint Development
- Stable / Predictable regional funds

# Timothy Lovain

TPB Chairman

[mwcog.org/tpb](http://mwcog.org/tpb)

---

777 North Capitol Street NE, Suite 300  
Washington, DC 20002



Metropolitan Washington  
Council of Governments