

**CAP Grant – Category 5**  
**Landmarks**  
**Kickoff Meeting**  
**June 24<sup>th</sup>, 2008**

# AGENDA

- Project Overview - Mathew Felton, Towson Center for GIS
- Project Details - Kenneth Juengling/Missy Valentino, Towson Center for GIS
  - Admin - Tracking "in-kind" time toward the project
  - Schedule - Planned meetings/milestones
  - Documentation - What we will gather overall
- SHA Landmarks Effort – Clay W. Supensky/Laurie Goudy, SHA/EIS, Inc.
- Feedback and Wrap up – Mathew Felton, Towson Center for GIS

# Project Overview

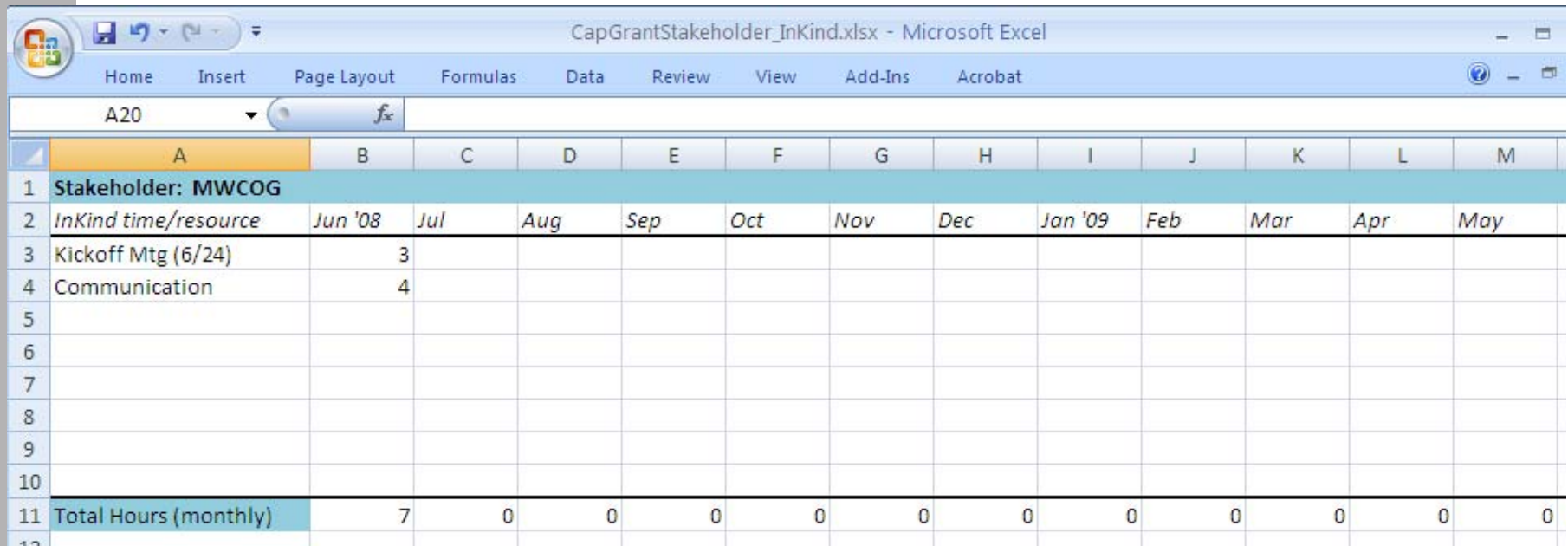
- Purpose: to establish an automated, sustainable means to collect, document, assemble, and distribute landmark structures data to The National Map for Maryland and the National Capital Region
- Pilot Jurisdictions: Baltimore, Frederick, and Montgomery Counties in Maryland, the district of Columbia, and Fairfax County, VA
- Data themes: landmark buildings that would appear on USGS quads, such as schools, post offices, courthouses, fire stations, railroad stations, etc.
- Goals:
  - Primary: to assemble and contribute FGDC landmark structures data to The National Map
  - Secondary: to establish an automated, sustainable process that enables additional jurisdictions to contribute structures data to The National Map using the process and standards developed through the project

# Project Details

- Admin
  - Tracking "in-kind" time toward the project
    - Sample spreadsheet
- Schedule
  - Planned meetings
    - Gotomeeting provided for every meeting
  - Milestones
- Documentation
  - Reporting Requirements
  - Metadata for Data
  - Process to Follow

# Project Details

- Admin
  - Tracking "in-kind" time toward the project
    - Sample spreadsheet

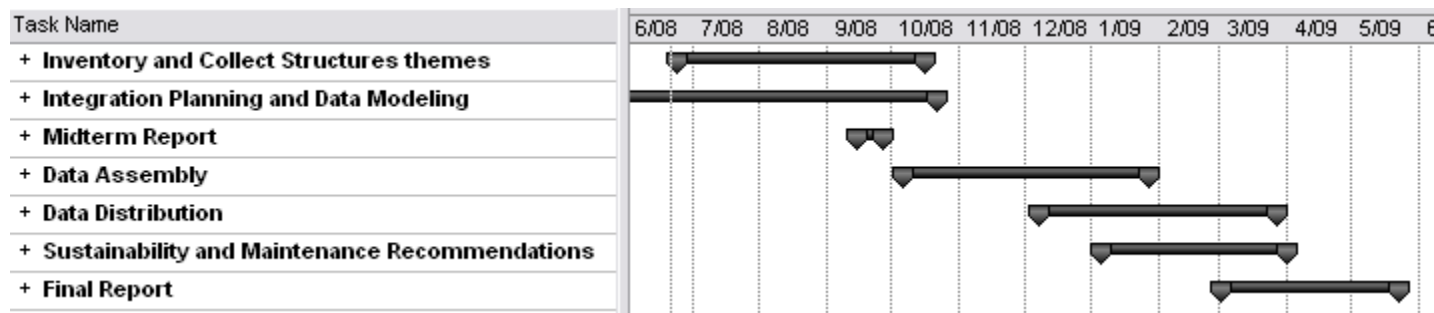


The screenshot shows a Microsoft Excel spreadsheet with the following data:

Stakeholder: MWCOG	Jun '08	Jul	Aug	Sep	Oct	Nov	Dec	Jan '09	Feb	Mar	Apr	May
InKind time/resource												
Kickoff Mtg (6/24)	3											
Communication	4											
Total Hours (monthly)	7	0	0	0	0	0	0	0	0	0	0	0

# Project Details

- Schedule
  - Planned meetings
    - Gotomeeting provided for every meeting
  - Milestones
- Task Summary
  - Task 1 Inventory and Collection of Structures Themes
  - Task 2 Integration Planning and Data Modeling
  - Task 3 Data Assembly
  - Task 4 Data Distribution
  - Task 5 Sustainability and Maintenance Recommendations

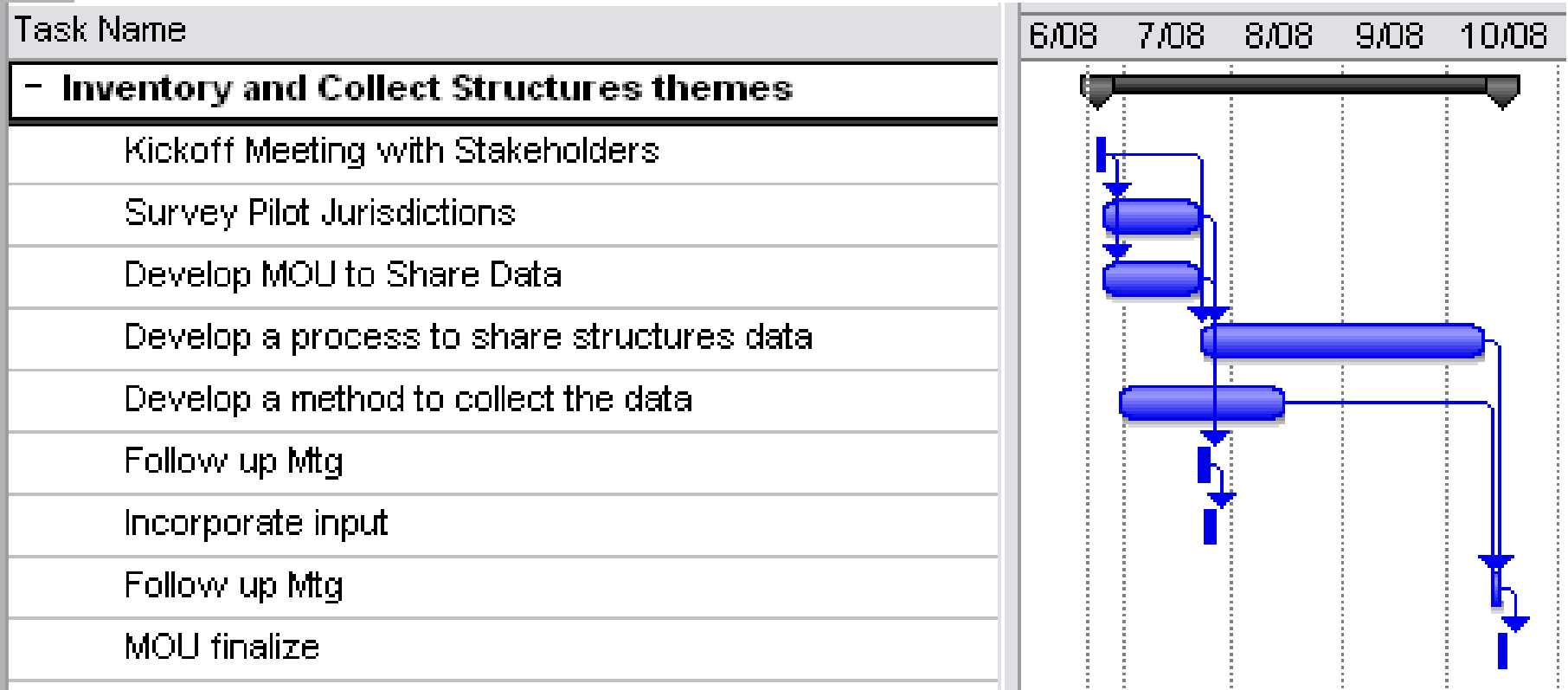


# Project Details

- Task 1 Inventory and Collection of Structures Themes
  - Project team will survey the pilot jurisdictions within the Baltimore-Washington area to inventory existing landmark structures data and each pilot jurisdiction's data-sharing policies.
  - Team will use the information to subsequently develop a process that enables and encourages each jurisdiction to share structures data.
  - Deliverable 1.1
    - Inventory of existing structures data for the Baltimore-Washington area that includes a catalog of the data collected, and metadata provided by the suppliers.
  - Deliverable 1.2
    - Revised MOU to reflect landmark structures data themes.

# Project Details

## ➤ Schedule



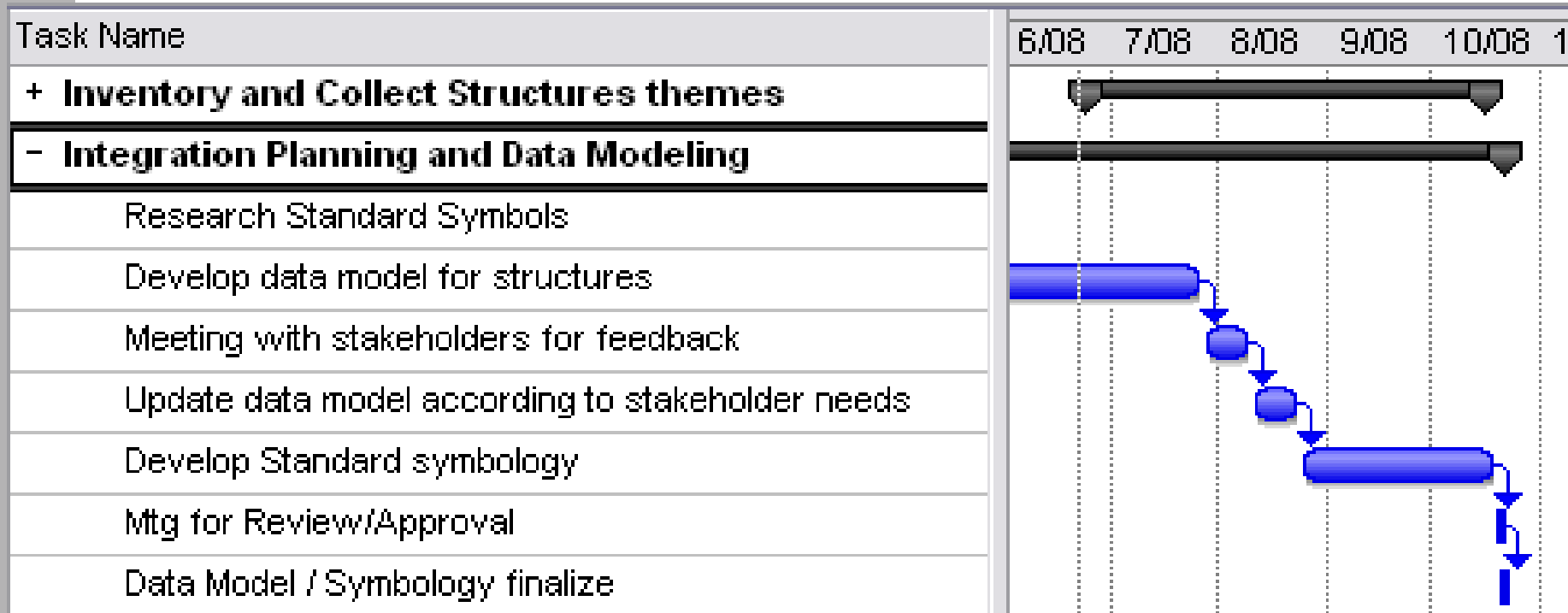


# Project Details

- Task 2 Integration Planning and Data Modeling
  - Landmark structures themes with a uniform set of minimum attributes for the Baltimore-Washington area conformant to the FGDC Homeland Security Geospatial Data Model.
  - Data will include landmark buildings such as schools, post offices, courthouses, fire stations, and railroad stations. Other data elements will be considered if appropriate.
  - Standard symbology will enable correct and consistent interpretation of the data across the region. The project team will research and recommend standard symbols for the framework themes based on The National Map.
- Deliverable 2.1
  - Data Model
- Deliverable 2.2
  - Symbology Dictionary

# Project Details

## ➤ Schedule



# Project Details

## ➤ Schedule

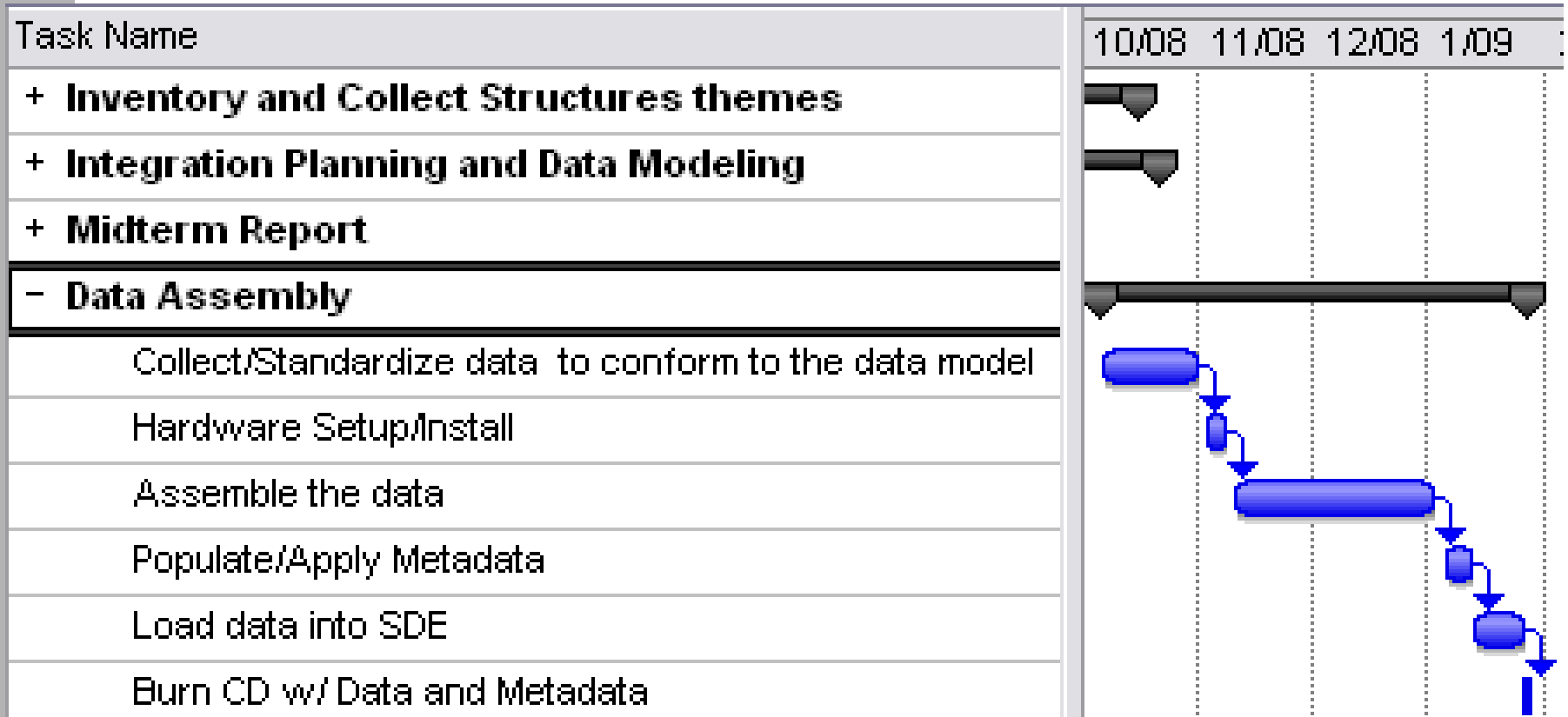
Task Name	9/08	10/08
+ <b>Inventory and Collect Structures themes</b>		
+ <b>Integration Planning and Data Modeling</b>		
- <b>Midterm Report</b>		
Draft		
Edit		
Final		

# Project Details

- Task 3 Data Assembly
  - Project team will standardize data collected from pilot jurisdictions to conform to the data model;
  - Assemble the data from the highest resolution and most current data collected into a regional landmark structures dataset.
  - Deliverable 3.1
    - Landmark structures data on a CD in an ESRI-compatible format

# Project Details

## ➤ Schedule

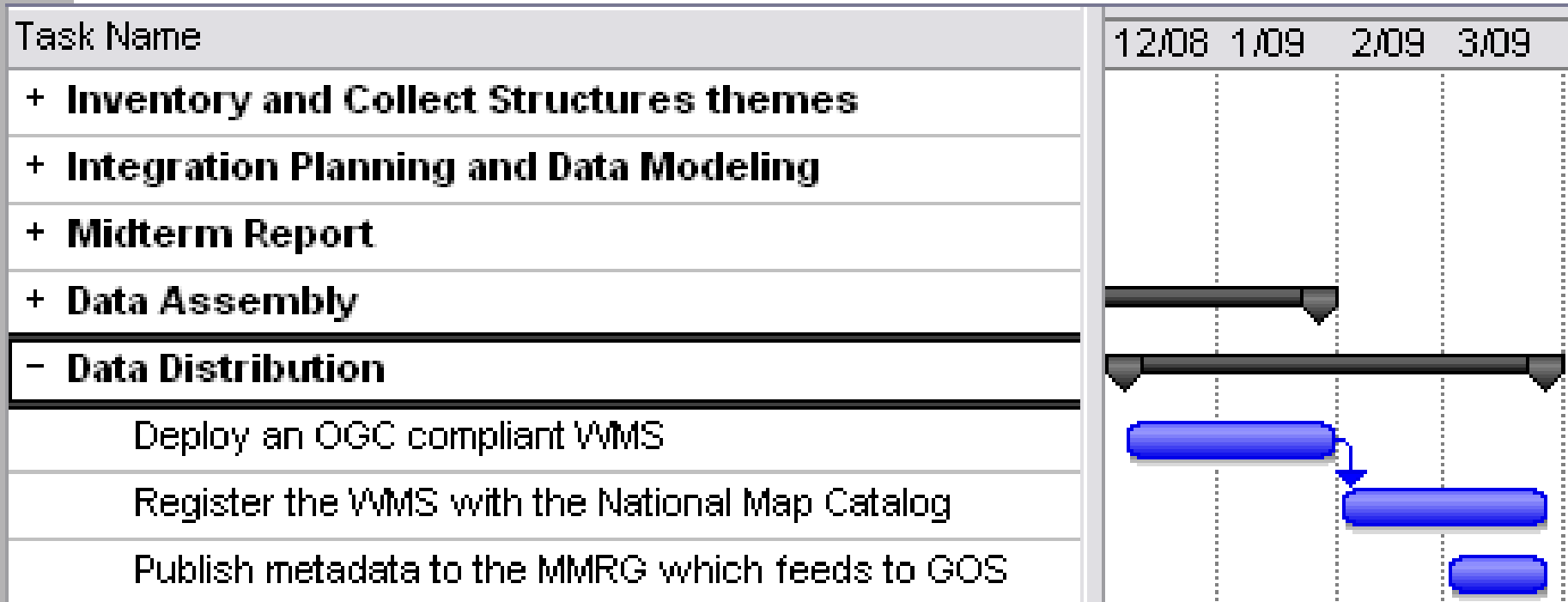


# Project Details

- Task 4 Data Distribution
  - TU-CGIS will house the new landmark structures dataset on its current NSDI servers and distribute the dataset to The National Map via a Web Map Service (WMS).
  - Metadata will be posted to [www.MarylandGIS.net](http://www.MarylandGIS.net), which is harvested by Geospatial One Stop. Related data, WMS, and plans for data maintenance and backup procedures will be documented in a partnership agreement with the NGPO and made available through Geospatial One-Stop
- Deliverable 4.1
  - OGC-compliant WMS for the landmark structures dataset
- Deliverable 4.2
  - FGDC-compliant metadata published to [www.MarylandGIS.net](http://www.MarylandGIS.net)

# Project Details

## ➤ Schedule



# Project Details

## ➤ Task 5 Sustainability and Maintenance

### Recommendations

- The project team will leverage technology currently in place to automatically synchronize disparate data across multiple jurisdictions. This technology has already been proven for synchronizing addressable centerline information.
- While the proposed project will focus on the initial compilation of data, the secondary goal of achieving a process that enables other Maryland counties to share data to The National Map will be the sustainable process for updating the data themes

### ➤ Deliverable 5.1

- Functional pilot that demonstrates landmark structure data synchronization

### ➤ Deliverable 5.2

- Recommendations for the strategy and process of data maintenance for landmark structures in the Baltimore Metropolitan area and NCR



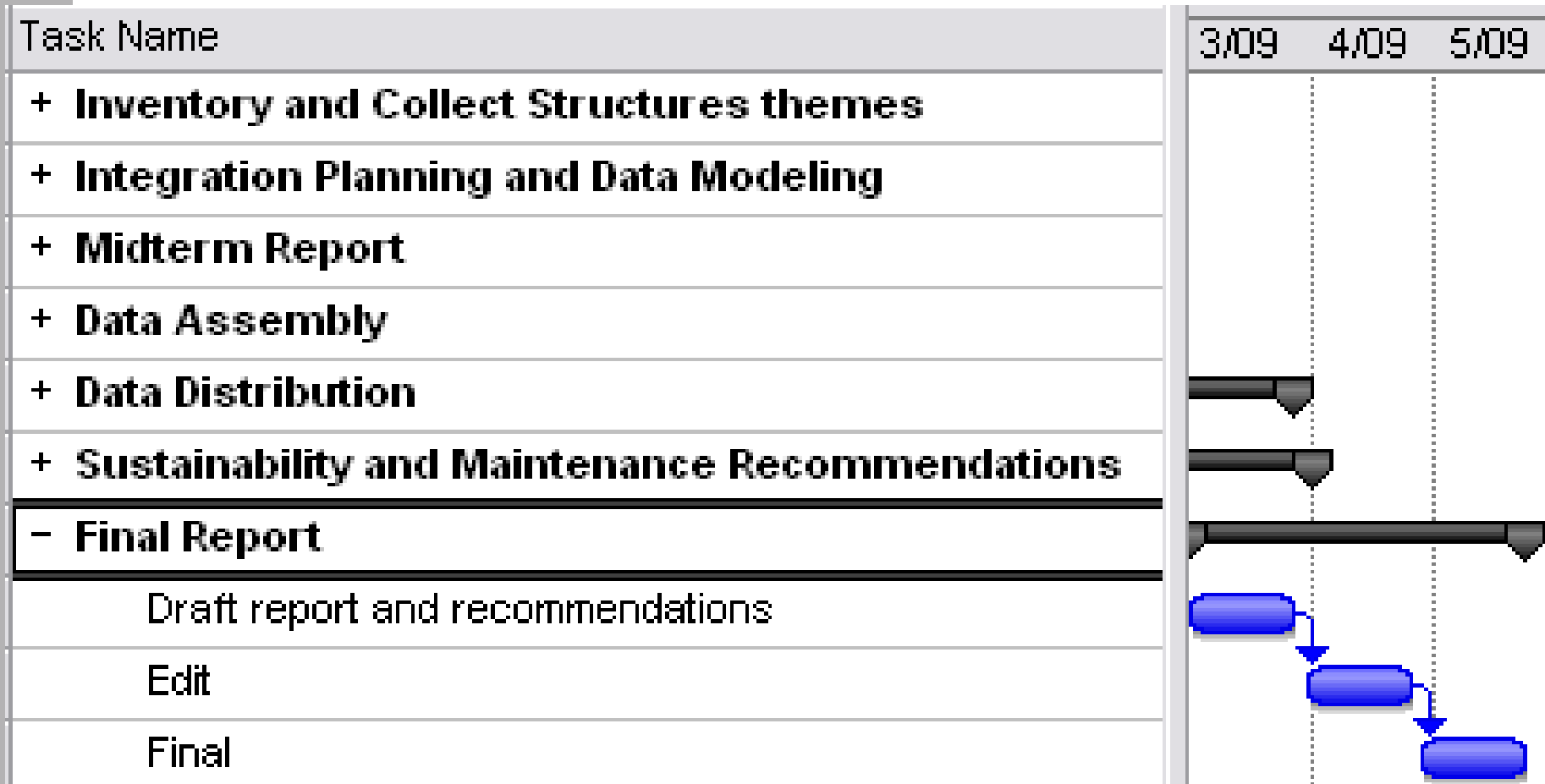
# Project Details

## ➤ Schedule

Task Name	1/09	2/09	3/09	4/09
+ <b>Inventory and Collect Structures themes</b>				
+ <b>Integration Planning and Data Modeling</b>				
+ <b>Midterm Report</b>				
+ <b>Data Assembly</b>	█			
+ <b>Data Distribution</b>	█	█	█	
<b>- Sustainability and Maintenance Recommendations</b>	█	█	█	█
Develop a process to update and maintain the data	█			
Complete a pilot to synchronize updates		█		
Meeting for Feedback			█	
Document the process and recommendations			█	
Meeting for Presentation			█	

# Project Details

## ➤ Schedule



# Upcoming Meetings (Specific Dates to Follow)

- July '08
  - Task 1 – Initial data survey; MOU draft
  - Task 2 – Data Model draft; Symbology draft
- October '08
  - Task 1 – Incorporate feedback Initial data survey; MOU
  - Task 2 – Incorporate feed back Data Model; Symbology
- March '09
  - Task 5 – Functional Pilot and Process feedback
- April '09
  - Task 5 – Presentation

# Upcoming Meetings (Specific Dates to Follow)

- Request to Stakeholders:
  - Known calendar windows to avoid
  - Please send by July 1<sup>st</sup> if possible
    - [mvalentino@towson.edu](mailto:mvalentino@towson.edu)
    - [kjuengling@towson.edu](mailto:kjuengling@towson.edu)

# Project Details

- Documentation

- Reporting Requirements

- Per Federal Requirements – Susan Wooden

- Metadata for Data

- As gathered/derived from Tasks 1 & 2

- Process to Follow

- As derived from Task 5

# SHA Landmarks Effort

- Clay W. Supensky/Laurie Goudy

# Feedback and Wrap up

➤ Matt Felton