

A proud partner of the  american**job**center® network

Metropolitan Washington Council of Governments

Montgomery County Workforce Development Overview

November 14, 2025



WHERE WE'RE LOCATED

GERMANTOWN LOCATION

12900 Middlebrook Road, 1st Floor
Germantown, MD 20874

(240) 406 -5485

germantown@worksourcemontgomery.com

WHEATON LOCATION

11510 Georgia Ave., 1st Floor
Wheaton, MD 20902

(301) 929-6880

wheaton@worksourcemontgomery.com

EAST COUNTY H.I.R.E. CENTER

3300 Briggs Chaney Road
Silver Spring, MD 20904

(240) 777-8412

EastCounty@worksourcemontgomery.com

MOBILE JOB CENTER

Locate our Mobile Job Center
bit.ly/wsmresourcecalendar

YOUNG ADULT AMERICAN JOB CENTER

Montgomery College
East County Education Center

REENTRY JOB CENTER

Montgomery College
Correctional Facility

FEDERAL WORKER CAREER CENTER

11510 Georgia Ave., Ste. 101
Wheaton, MD 20902
(240) 283 -1509

JUSTICE EMPOWERMENT JOB CENTER

11510 Georgia Ave., 1st Floor
Wheaton, MD 20902

VIRTUAL JOB CENTER

SkillUp Montgomery®
bit.ly/wsmvirtualcoach

FINANCIAL EMPOWERMENT CENTER

11510 Georgia Ave., 1st Floor
Wheaton, MD 20902

WSM / WDB PRIORITIES



**Workforce
System Building**

**Community
Engagement**

**Business
Engagement**

**Talent
Pipelines**

**Youth Career
Education**

**Measurable
Impact**

SYSTEM BUILDING



TRUST &
RELATIONSHIP
BUILDING



MEASURABLE
IMPACT & EQUITY



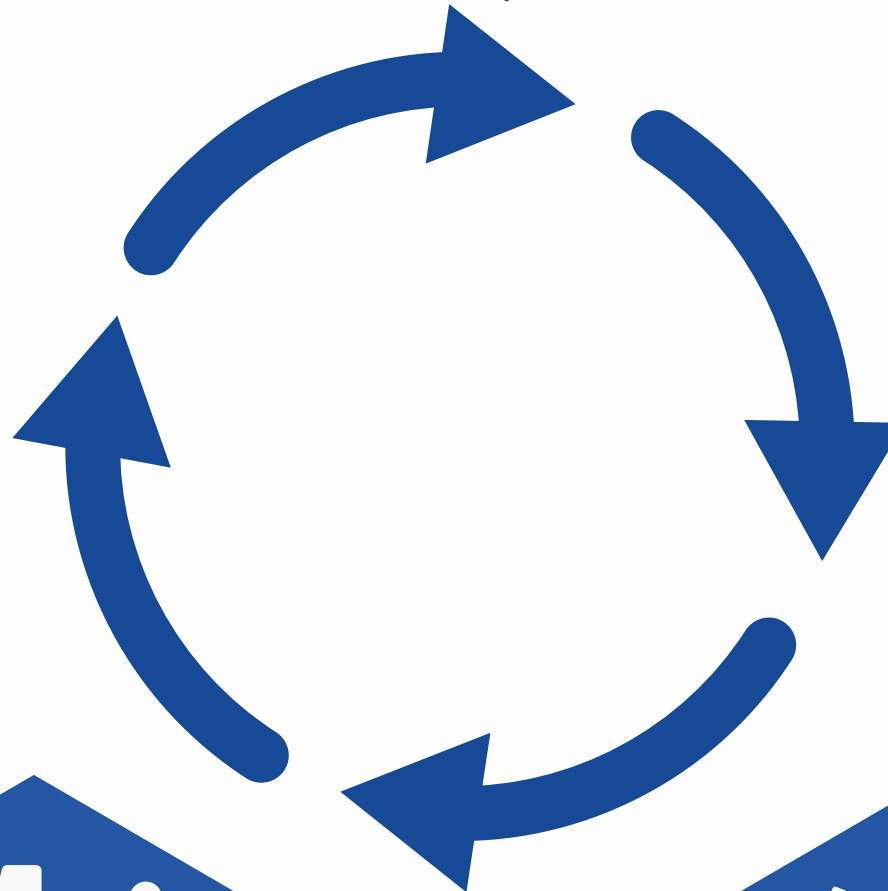
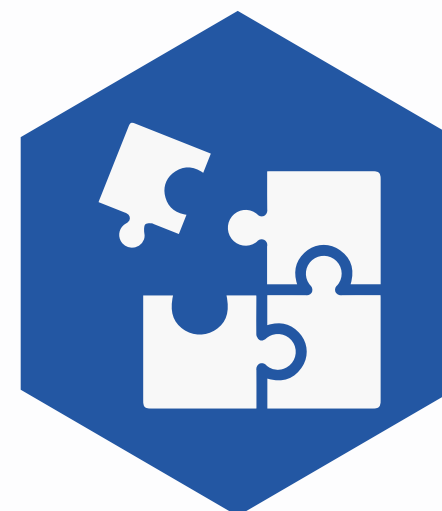
COMMUNITY
ASSET MAPPING



CONNECTIVE
TECHNOLOGY



CAPACITY BUILDING &
GAP FILLING



COMMUNITY ENGAGEMENT

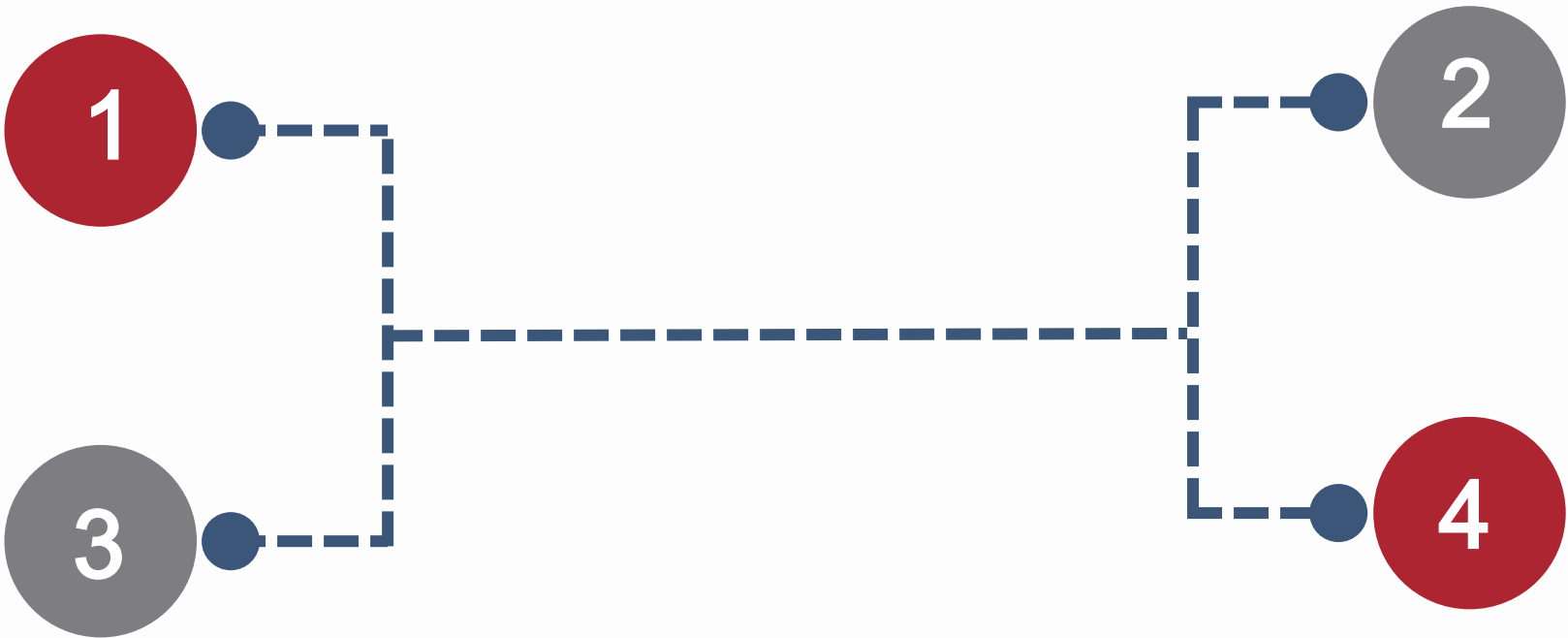


Advisory Committees

WSM has formed and is advised by a Youth, Community Impact, Industry, and Re-Entry Advisory Committees

Accessibility

All staff are equipped with ILA Translate Live tools to meet the language diversity of our residents

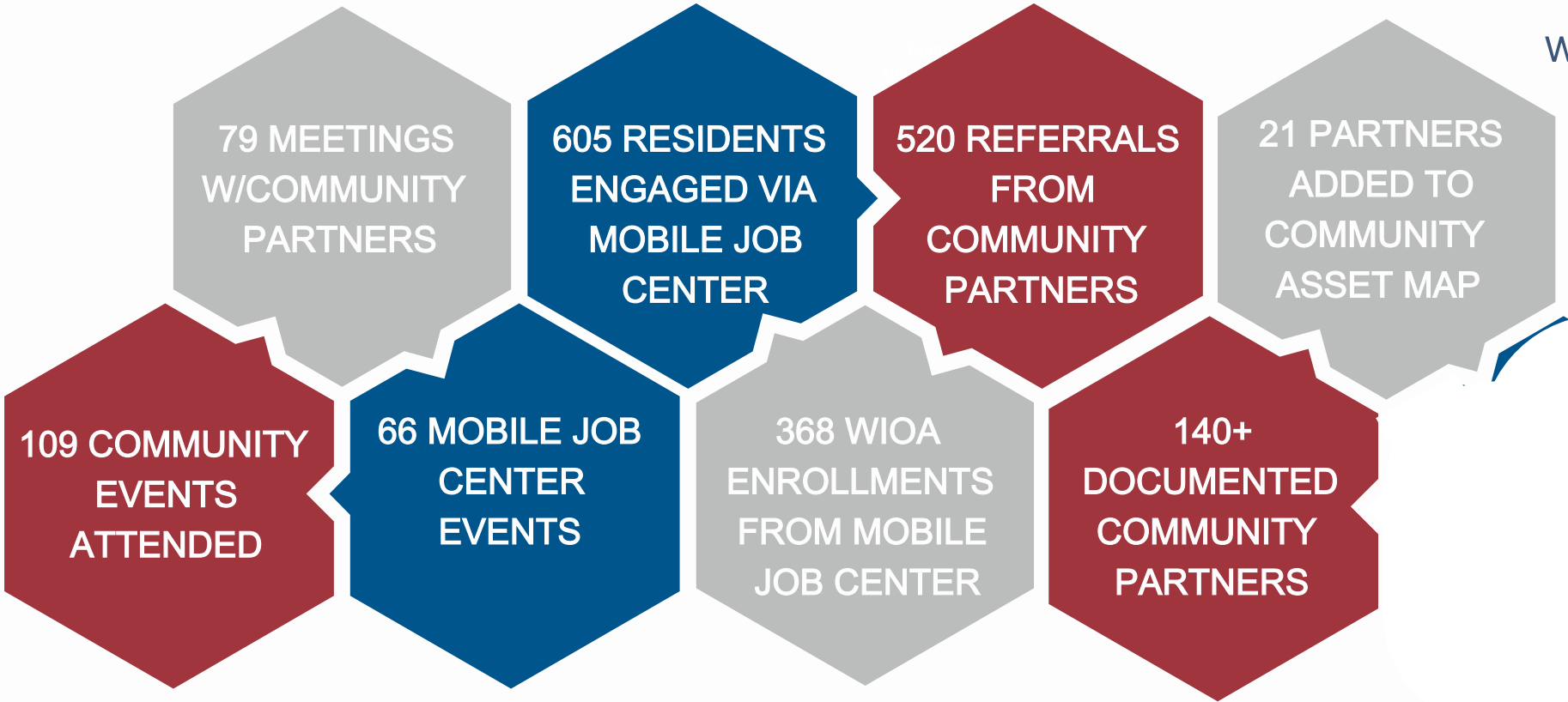


Mobile Services

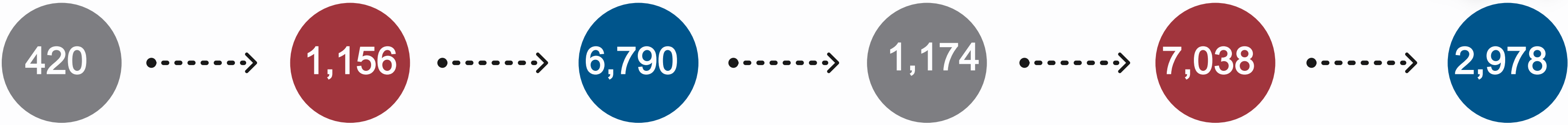
WSM deploys a Mobile Job Center directly in communities of need within Montgomery County

Technology

To better reach business community, WSM has purchased a business data visualization platform to better connect with over 60K local businesses



BUSINESS ENGAGEMENT



New Employers
Registered

Total Business
Served

Services Offered
to Businesses

Internal Job
Orders Created

Internal Job
Referrals

Employment
Placements

Core Services

- Access to State Job Board
- Learning Management System
- Hiring Event Coordination
- Applicant Screening
- Labor Market Information
- Use of AJC Facilities
- HR Consulting e.g., Recruitment Strategies, & Retention Strategies

Specialized Services

- Paid Work Experience Subsidy
- On-the-Job Training Subsidy
- Incumbent Worker Training
- Fair Chance Hiring Grant
- Customized Solutions

TALENT PIPELINES



Sector Connectors

Collaborative training initiatives designed to connect job seekers to training providers and to businesses in key industries e.g., Hospitality, Construction, Life Sciences, I.T., Healthcare, & Transportation

SkillUp Montgomery

Virtual training platform providing residents and businesses access to over 7,000 courses and over 100 certification programs to enhance professional and occupational skills.

Launch Your Future Employment (LYFE)

The program offers Montgomery County residents ages 16-24 who are not in school a 12week paid work-experience internship, along with career exploration and job-readiness training. Participants gain hands-on experience while receiving support to either secure full-time employment, enter an apprenticeship/training program, or return to formal education.

Dual Track Re-Entry Program

The program offers Montgomery County residents ages 16-24 who are not in school a 12week paid work-experience internship, along with career exploration and job-readiness training. Participants gain hands-on experience while receiving support to either secure full-time employment, enter an apprenticeship/training program, or return to formal education.



Available Resources & Services



Mobilize Montgomery

- An initiative primarily between Montgomery County Government, MD Dept. of Labor, WorkSource Montgomery, MCEDC, and others.
- Goal is to provide a centralized information & resource hub for impacted job seekers & employers.



An Initiative Supporting the Federal Workforce
in Montgomery County, Maryland



[Home](#) [Job Seekers](#) [Employers](#) [About](#)

New Initiative Launches to Support Maryland Businesses and Employees Affected by Federal Budget Cuts

Mobilize Montgomery

Mobilize Montgomery is an initiative between Montgomery County Government, Maryland Department of Labor, WorkSource Montgomery, Montgomery County Economic Development Corporation, Montgomery County Chamber of Commerce, the City of Gaithersburg, Rockville Chamber of Commerce, the Maryland Women's Business Center and Rockville Economic Development, Inc, as well as local chambers of commerce, to better support employers and employees affected by the federal government budget cuts.

We recognize the impact of these recent changes on our community. Together, we're committed to providing resources to help you navigate this challenging time. Whether you're a business owner, contractor, or employee, explore key resources below on financial assistance, workforce programs, job fairs, and more.



FEDERAL WORKFORCE CAREER CENTER



Unemployment Benefits

Support available at the Wheaton American Job Center to assist with UI claims and benefits

Professional Development

Job search, career counseling, & training workshops for professionals seeking new opportunities

Job Placement Support

Staff-assisted support for identifying viable career opportunities

Maryland Workforce Exchange

Online job platform featuring thousands of local and statewide jobs, labor market information, and training resources

01

02

03

04

05

06

07

08

SkillUp Montgomery

Free online professional development and occupational skills courses.

Workshops & Job Fairs

Participate in instructor led professional development workshops along with job fairs and networking events

Career Coaching

Assess your interests and explore relevant career pathways and opportunities

A.I. Utilization

Utilize the power of Artificial Intelligence to identify local opportunities related to you current or former role



YOUTH CAREER EDUCATION

The Blueprint for Maryland's Future requires the WDB, MCPS, and Montgomery College to deliver individualized career counseling to all Middle and HS Students.



01

Personalized Career Advising
Direct counseling and advising services to students

03

Common Career Language
Realistic, Investigative, Artistic, Social, Enterprising, Conventional (RIASEC)

05

Student Driven Tools
Materials and resources to support the development of lifelong career management

02

Classroom Connections
School-based leaders to support and integrate the work into content areas

04

Career Experiences
College and career experiences aimed to increase exposure to a wide variety of opportunities

06

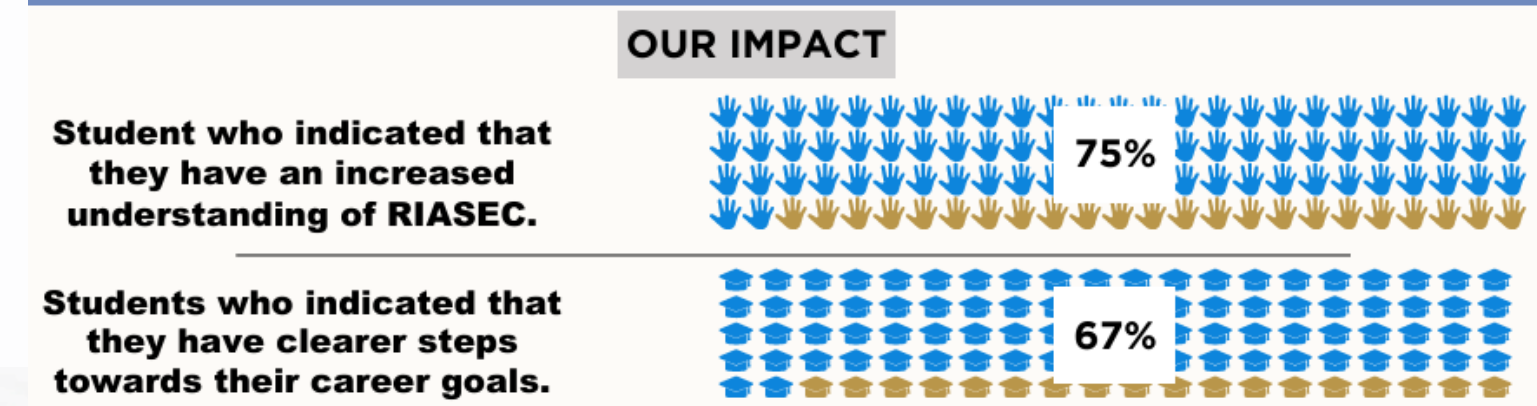
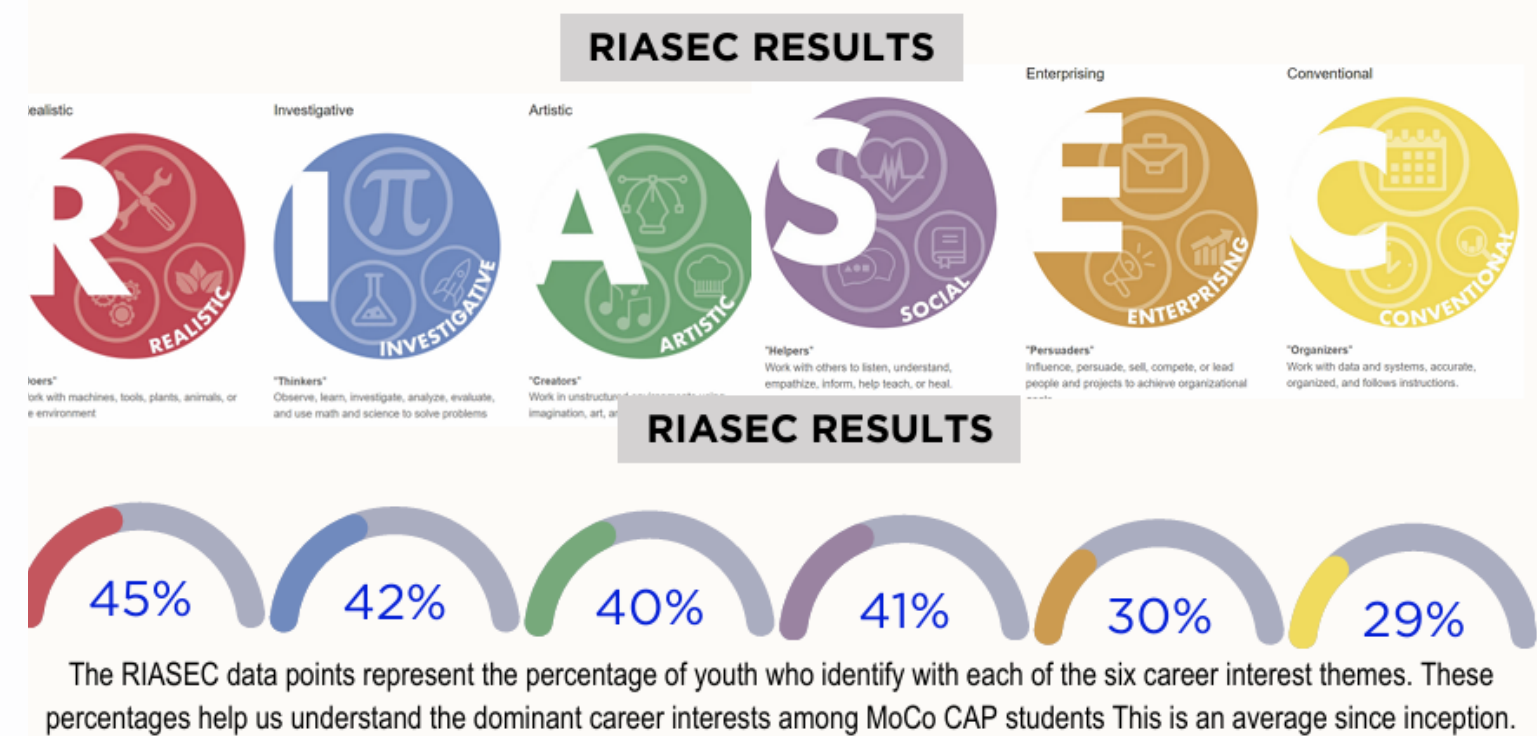
Experience Based Opportunities
Information about the world of work and connection to work-based learning opportunities



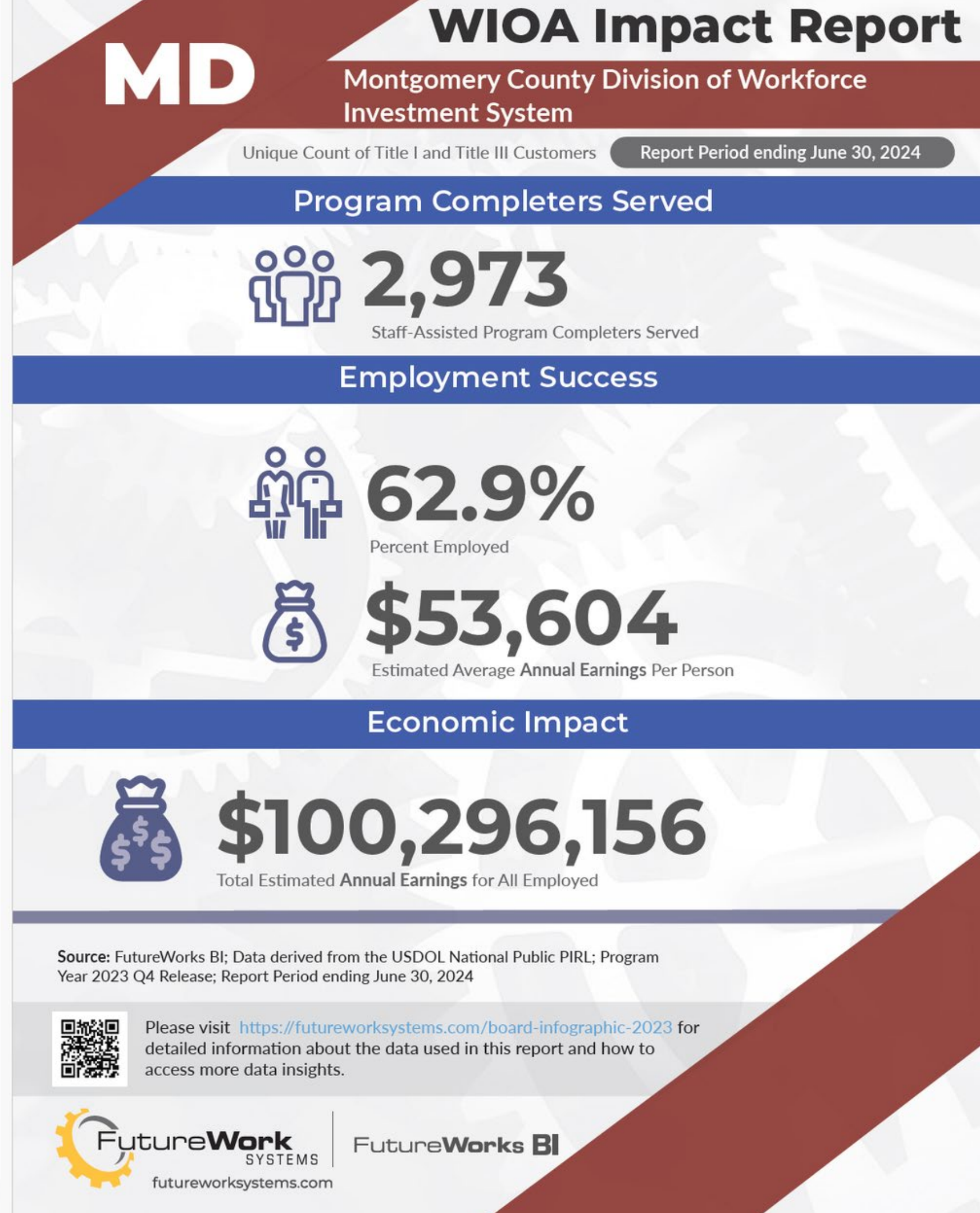
YOUTH CAREER EDUCATION

UNIQUE STUDENTS SERVED 2024-25 SCHOOL YEAR	
8,098 UNIQUE STUDENTS (MONTHLY)	77,542 UNIQUE STUDENTS (24-25 SCHOOL YEAR)
# of distinct students who completed the survey during reporting period	# of distinct students who completed survey at least once during the year.

STUDENT ENGAGEMENT 2024-25 SCHOOL YEAR			
WHOLE GROUP	SMALL GROUP	CAREER EXPLORATION	1:1 SESSION/OTHER
5,859 DURING REVIEW PERIOD	991 DURING REVIEW PERIOD	854 DURING REVIEW PERIOD	902 DURING REVIEW PERIOD
55,629 YTD	8,618 YTD	8,622 YTD	5960 YTD
Represents the count of students by session type: Initial Visit, Whole Group (10+ students), Small Group (<10 students), 1:1 Session, & Career Exploration.			



MEASURABLE IMPACT

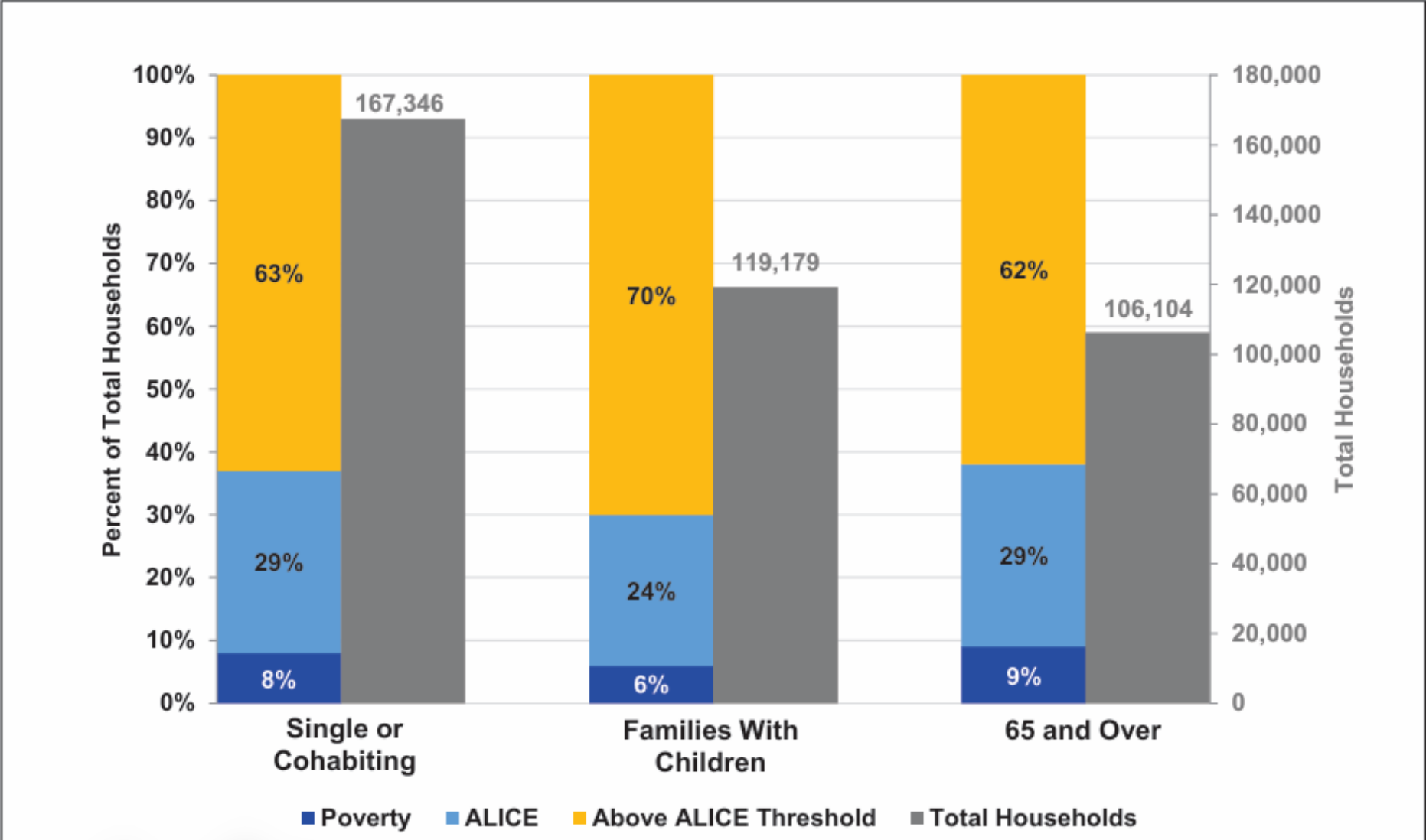


MEET A.L.I.C.E.

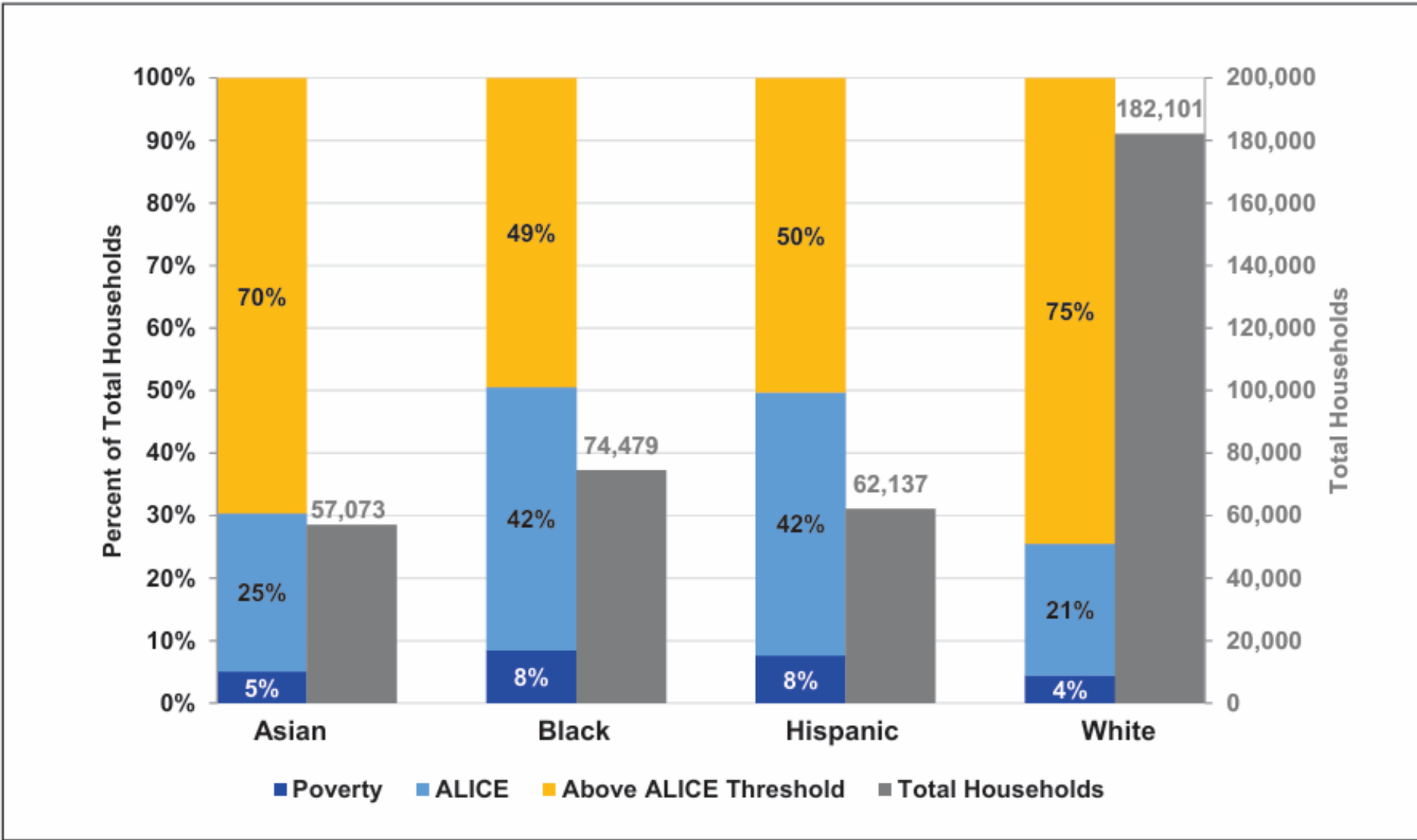


Population: 1,058,474 • **Number of Households:** 392,629
Median Household Income: \$125,371 (state: \$98,678)
Labor Force Participation Rate: 70.0% (state: 67.5%)
ALICE Households: 28% (state: 29%) • **Households in Poverty:** 8% (state: 10%)

Household Financial Status by Household Type, Montgomery County, 2023



Household Financial Status by Race/Ethnicity, Montgomery County, 2023



Questions?



FACEBOOK
/WorkSourceMontgomery



TWITTER
@WorkSourceMD



INSTAGRAM
@WorkSourceMD



LINKEDIN
WorkSource Montgomery

WEBSITE

www.worksourcemontergy.com



LINKTREE

Scan the QR code for more
information about us!

