

Pedestrian Safety Measures for the New Carrollton Metro Station

Prince George's County Pedestrian Safety Measures for the New Carrollton Metro Station: A 2010 Transportation Land Connection (TLC) study provided a tool box of 29 recommended capital improvements for WMATA, SHA and County maintained entities. This project would include sidewalk and crossing improvements and signal timing changes. These improvements will greatly enhance the pedestrian and bicycle access in and around the New Carrollton Metro Station and make it more suitable for transit oriented development, the Number 1 TOD in the County Priority letter. Specific improvements corresponding with Map include:

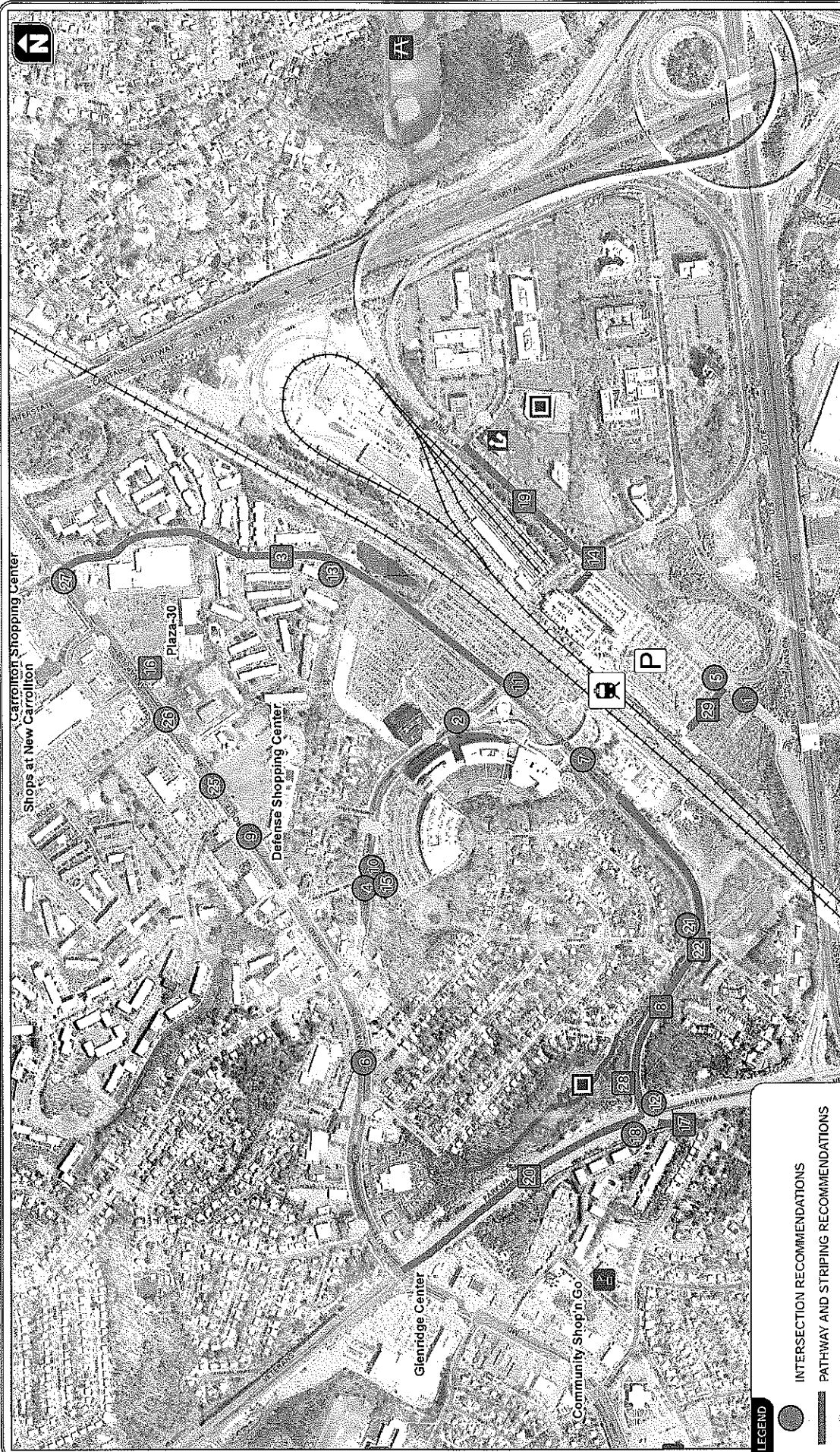
- 1 Sign instillation on the Garden City Drive near the Metro Station Entrance (cost \$500),
- 3 Bike facility improvements for 85th Avenue from Annapolis Road to Harkins Road (cost \$ 6,500),
- 4 Extend the west median for better pedestrian refuge on Harkins Road at West Lanham Drive (cost \$30,000),
- 8 Install six new lights and poles on Ellin Road (cost \$90,000)
- 14 Improve Access to and Pedestrian Push Button signal at Garden City Drive at Corporate Drive (cost \$200,000)
- 19 Install pedestrian walkway on east side of road in shoulder (cost \$120,000)*
- 22 Install sidewalks on Ellin Road from Veterans Parkway to Emerson Place (cost \$225,000*)
- 23 Provide 10 trash receptacles (WMATA) (cost, \$15,000)
- 24 Provide 10 benches (WMATA) (cost \$15,000)
- 25 Consolidate bus stops on Annapolis Road (WMATA) (cost \$15,000)
- 26 Move bus stop closer to intersection on Annapolis Road at 85th Ave (WMATA) (cost \$15,000)
- 27 Move bus stop on Annapolis Road closer to Riverdale Road (WMATA) (cost \$15,000)
- 28 Formalize pathway to M-NCPPC Rec. Center (M-NCPPC) (cost. Est. 18,000)**

* Requires Drainage estimate and verification

** Requires M-NCPPC Verification

Total Project Cost: \$872,093

Total Tiger Request: \$697,674.4



LEGEND

- INTERSECTION RECOMMENDATIONS
- PATHWAY AND STRIPING RECOMMENDATIONS
- EXISTING BUS STOP
- MULTIUSE PATHS

NOTE: PROJECTS 23 AND 24 ARE NOT MAPPED.