



Transportation and Air Traveler Characteristics Findings from the 2011 Washington-Baltimore Regional Air Passenger Survey

TPB Technical Committee
October 5, 2012

Richard I. Roisman, AICP
Continuous Airport System Planning (CASP) Program Manager

Presentation Overview

- ▶ Survey Overview and Methodology
- ▶ Transportation Findings
- ▶ Air Traveler Characteristics Findings
- ▶ Conclusions...so far
- ▶ Next steps

Survey Overview and Methodology (1)

- ▶ Survey purpose: provide observed data foundation for CASP program activities and the work of our airport partners (MAA, MWAA)
 - Air passenger demand forecasting
 - Planning for airport access facilities
 - Planning airport landside facilities
 - Trend and market analyses
- ▶ Conducted every two years at the three regional commercial service airports: BWI, DCA, IAD

2

Survey Overview and Methodology (2)

- ▶ Sample randomly selected from all scheduled departures during two-week survey period, taken from Official Airline Guide
- ▶ Stratification for 2011 survey: by airport, airline, first stop destination
- ▶ Final sample and strata approved by MWAA and MAA
- ▶ Passengers surveyed at airport departure gates while waiting to board flights

3

Survey Overview and Methodology (3)

- ▶ 2011 survey conducted for two-week period Wednesday November 2nd through November 15th
- ▶ Resurvey period (flights with insufficient response) November 16th to November 22nd
- ▶ Survey is voluntary; opt-in, self-administered questionnaire
- ▶ Surveyors collect completed questionnaires from respondents; mail-back option for passengers arriving late to gate area

4

Survey Questionnaire

C. ABOUT YOUR AIRPORT CHOICE

1. Please rank the three most important reasons for choosing Washington Dulles International Airport for your flight today.

(Please write #1, #2 or #3 in the appropriate spaces)

- _____ Closest airport
- _____ Easy road access
- _____ Convenient limo, bus, or rail service
- _____ Good parking facilities
- _____ More convenient flight times
- _____ Less expensive airfare
- _____ Only airport with non-stop flights
- _____ Only airport that serves market
- _____ Frequent flyer specific airline
- _____ Other _____

(Speedy)

2. If you could have arranged the airline schedule for your trip today, which airport would you have PREFERRED to use? (Please circle ONE answer)

- a. BWI Marshall
- b. Washington Dulles International
- c. Ronald Reagan Washington National
- d. No preference

3. Please indicate which other airport(s) you considered using today. (Please circle ALL answers that apply)

- a. BWI Marshall
- b. Ronald Reagan Washington National
- c. Other airport _____

(Speedy)

4. During the last twelve months, how many flights did you make from each of the following airports? (Please write a number in the appropriate spaces. Count today's trip as one flight)

- _____ BWI Marshall
- _____ Washington Dulles International
- _____ Ronald Reagan Washington National

D. ABOUT YOURSELF

1. Please indicate the location of your current residence:

City/County State Zip Code Country

2. How many people live in your household?

_____ People (Enter '1' if you live alone)

3. Please circle your age bracket:

- a. 18 or younger
- b. 19-24
- c. 25-34
- d. 35-49
- e. 50-64
- f. 65 or older

4. Please circle the answer that approximates the total household annual income of all persons in your household:

- a. Less than \$15,000
- b. \$15,000-24,999
- c. \$25,000-44,999
- d. \$45,000-79,999
- e. \$80,000-119,999
- f. \$120,000-159,999
- g. \$160,000-199,999
- h. \$200,000 or more

If you were visiting the Washington-Baltimore area, please answer questions #5 and #6, then proceed directly to section E.

5. How many nights did you stay in the area? _____ Nights (Enter '0' if you are leaving the same day you arrived)

6. Approximately how much did you spend PER DAY while you were in the area? (Include expenses which are meals, hotels, rental cars, etc. Do not include airfare. Please circle ONE answer)

- a. Less than \$100
- b. \$100-199
- c. \$200-299
- d. \$300-399
- e. \$400-499
- f. \$500-749
- g. \$750-999
- h. \$1,000 or more

If your air travel begins from this airport please answer Questions #7 and #8 below, then proceed to section E.

7. How many nights will you spend away on this trip? _____ Nights (Enter '0' if you are returning today)

8. How many vehicles are usually available for use at your residence? _____ Vehicles (Enter '0' if no vehicles are available)

E. PLEASE WRITE ANY COMMENTS YOU MAY WISH TO BRING TO OUR ATTENTION BELOW

Again, Thanks For Your Help!

I -

2011 WASHINGTON-BALTIMORE REGIONAL AIR PASSENGER SURVEY

TO DETERMINE LOCAL AIRPORT NEEDS



IAD

This survey is being conducted by: Metropolitan Washington Council of Governments Metropolitan Washington Airports Authority Maryland Aviation Administration in cooperation with the airlines serving the region's airports.

This survey concerns your trip today. Please complete this form, even if you have received a form on other days.

All answers are confidential. Personal identification is not required. Thank you for your cooperation.

5

2011 APS Data Collection Summary

Airport	Flights Surveyed	Revenue Passenger Count	Completed Surveys	Response Rate
BWI	229	22,933	8,766	38%
DCA	212	15,251	6,607	43%
IAD	243	21,137	8,057	38%
Total	684	59,321	23,430	39%
Mailback			133	
Grand Total			23,563	

*Survey results annualized

6

Transportation Findings

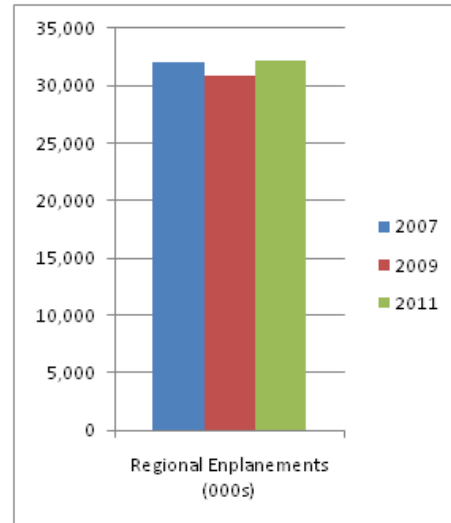
- ▶ Airport Use
- ▶ Airport Choice / Preference
- ▶ Trip Purpose
- ▶ Trip Origin
- ▶ Mode of Access

7

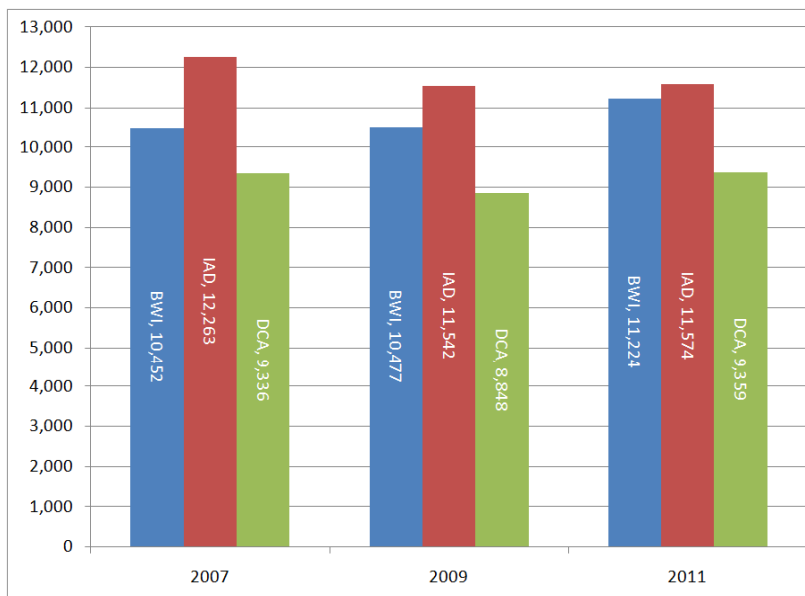
Airport Use - General

- Regional enplanements up slightly over 2009
- Regionally, both local originations and connections increased
- Different local origination / connecting characteristics at each airport

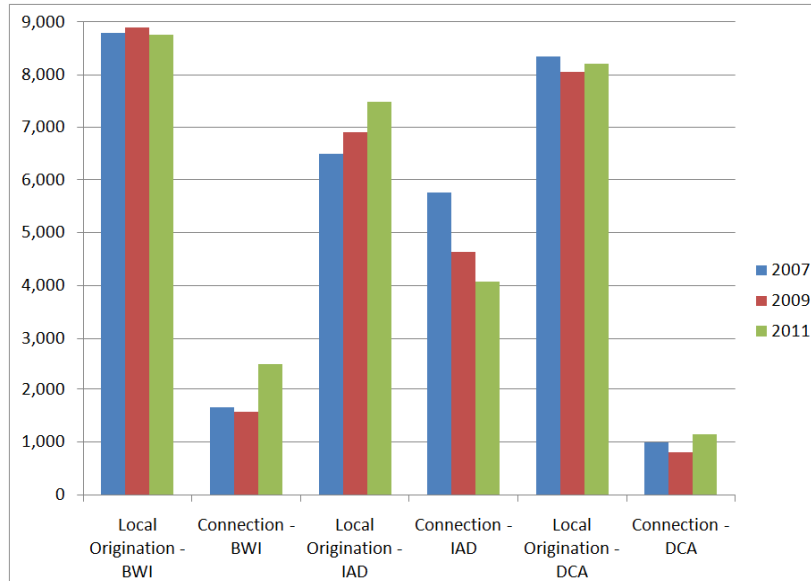
Total Annual Enplanements by Year



Airport Use: Annual Enplanements by Airport by Year (000s)



Annual Local Originations and Connecting Flights by Airport by Year (000s)



10

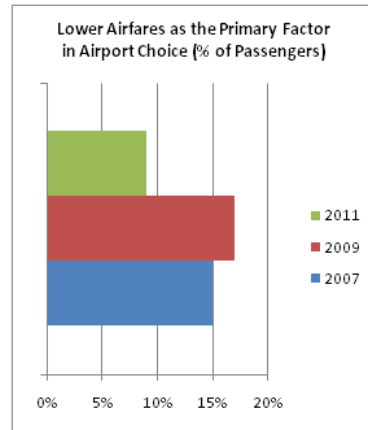
Airport Use – Local Originations vs. Connections

- Regionally, 76% of enplanements were local originations and 24% connecting flights, compared with 77% and 23% for 2009.
- Increase in proportion of connecting passengers at BWI attributed to merger of Southwest and AirTran (May 2011)
- Decrease in connecting passengers at IAD despite merger of United and Continental (October 2010)
- Survey analysis focused on local originations, since they utilize the surface transportation network

11

Airport Choice – Primary Factor

- Cost of airfare less of a factor, down from 2009 levels of 27% and 16% at BWI and IAD to 18% and 8% in 2011, respectively
- Accessibility (closest airport) still the biggest factor, but decreased from 61% in 2009 to 57% in 2011 for all airports
- By airport, accessibility factor unchanged at BWI, decreased from 53% to 42% at IAD, and from 72% to 71% at DCA
- Travelers more sensitive to value of travel time to airport than airfare



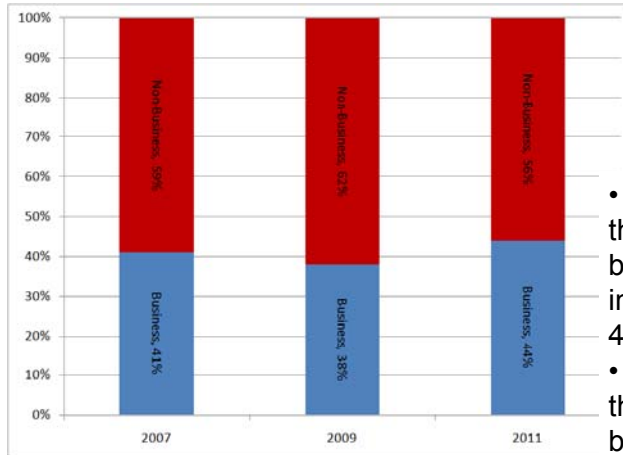
12

Airport Preference

- Regionally, two-thirds of respondents indicated they were travelling from their preferred airport (unchanged from 2009)
- Residents more likely than non-residents to express an airport preference
- DCA is the most-preferred airport by both residents (36%) and non-residents (39%), followed by BWI (31% and 27%), and IAD (23% and 14%)

13

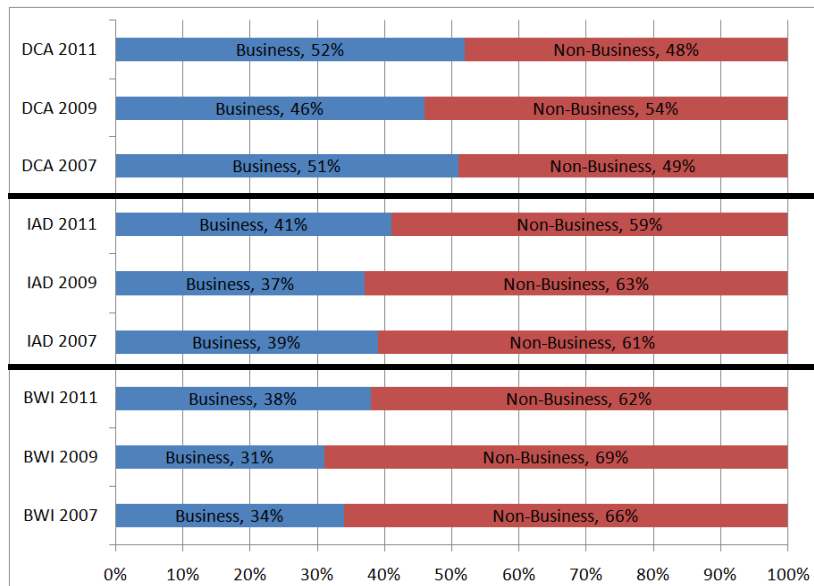
Trip Purpose – All Airports



- Compared with 2009, the percentage of business travel has increased from 38% to 44%
- Compared with 2009, the percentage of non-business travel has decreased from 62% to 56% (effects of recession)

14

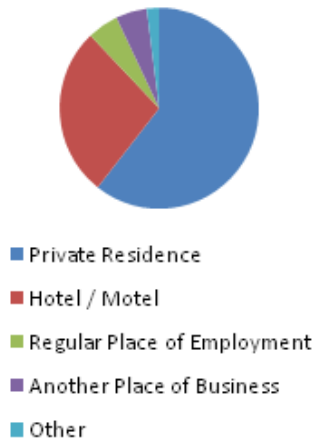
Trip Purpose By Airport by Year



15

Trip Origin

Local Air Passenger Trip
Origins - Regional



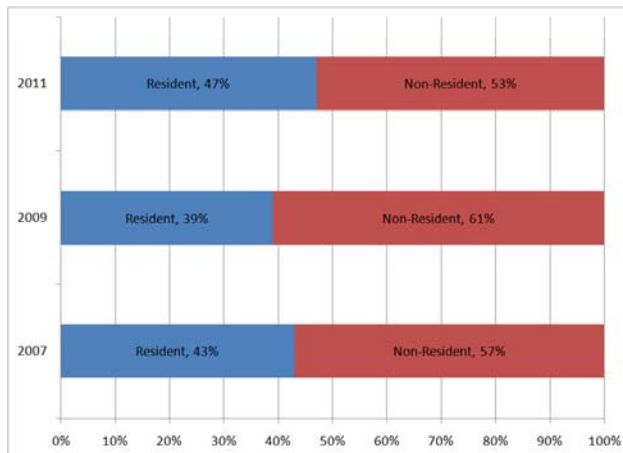
- By airport, about two-thirds of airport passengers' ground trips began at a private residence for both BWI and IAD, but only about half for DCA
- About one-third of airport passengers' ground trips began at a hotel for DCA, but only 21% at BWI and 26% at IAD

16

Air Traveler Resident Status

- For 2011, DCA highest proportion of non-residents (58%); in 2009 BWI highest proportion of non-residents (62%)
- For 2011, IAD highest proportion of residents (52%) and only airport with majority of resident travelers
- In 2009, IAD still highest proportion of residents (44%) but none of the three airports had a majority of resident travelers

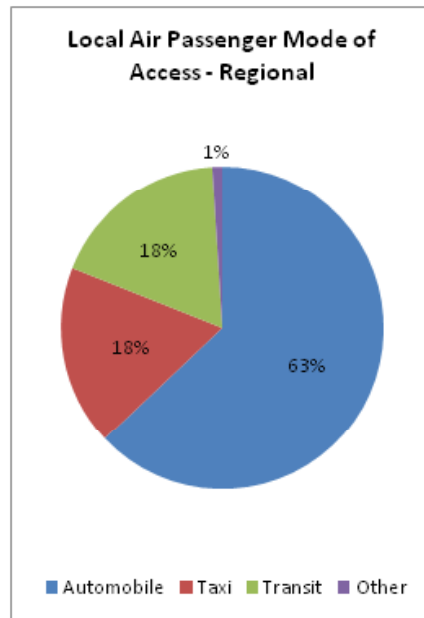
All Airports



17

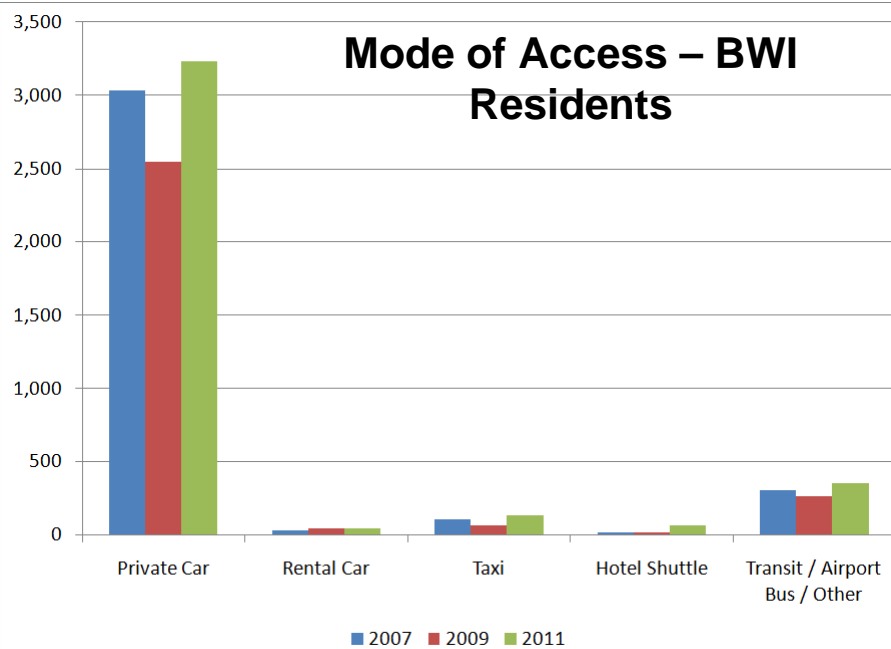
Mode of Access

- The most common mode of access to the airports in 2011 continued to be the automobile (private and rental), accounting for 63% of all local originations
- Metrorail usage by passengers traveling to DCA continues to be among the highest proportions of any airport in the United States at 16%

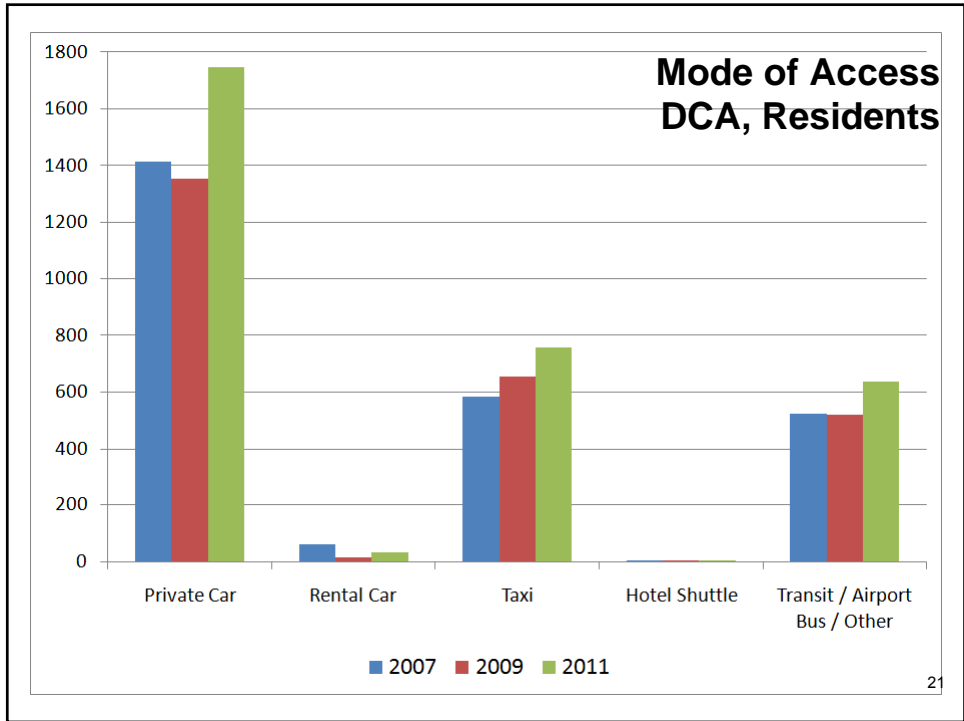
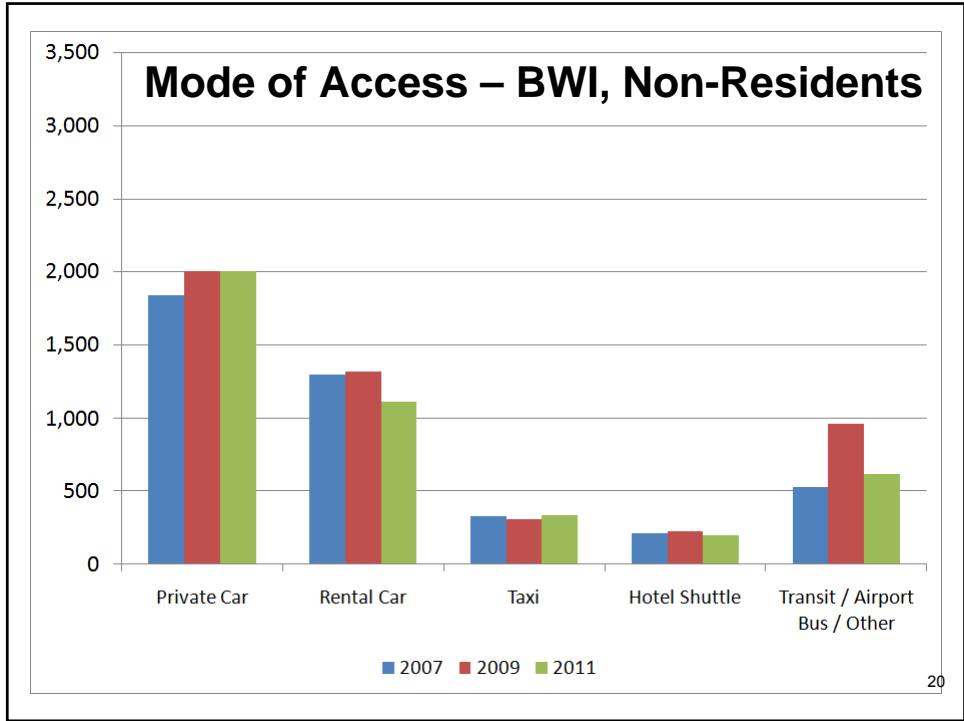


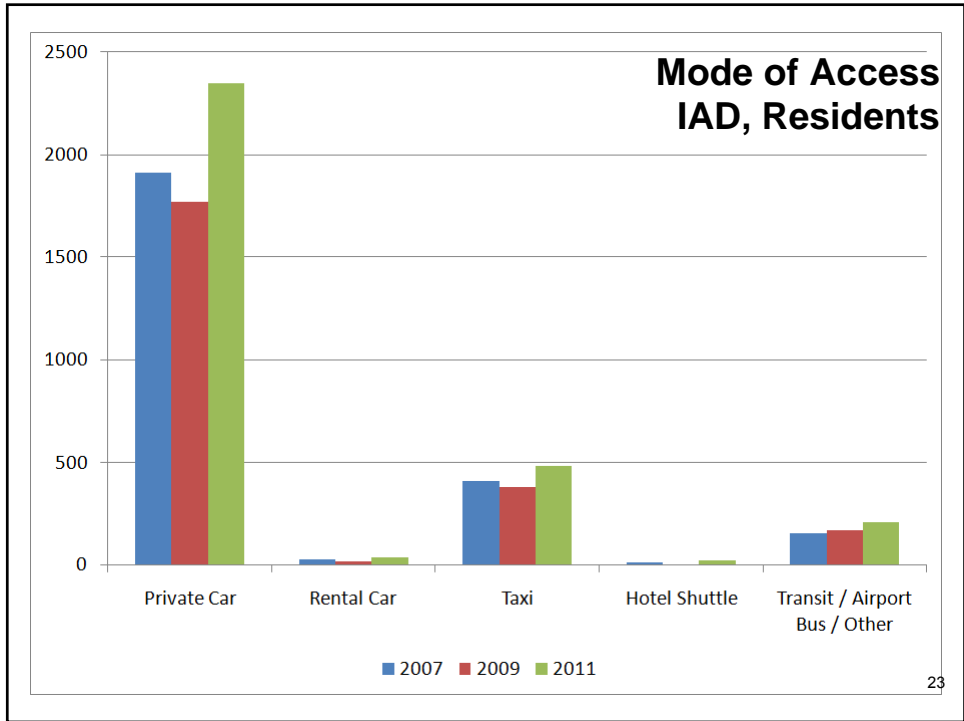
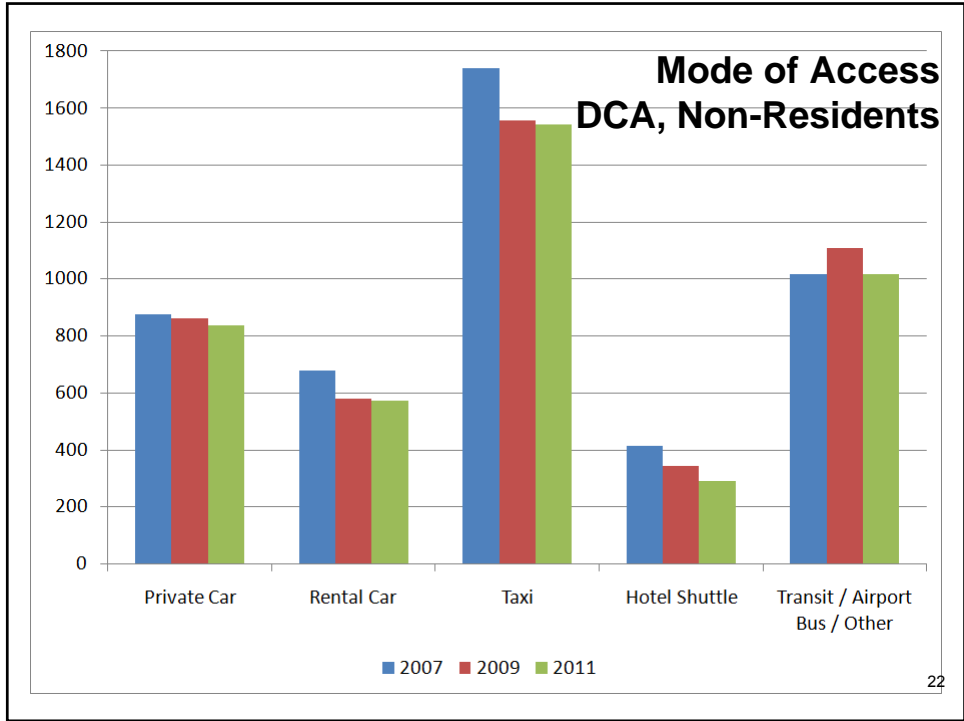
18

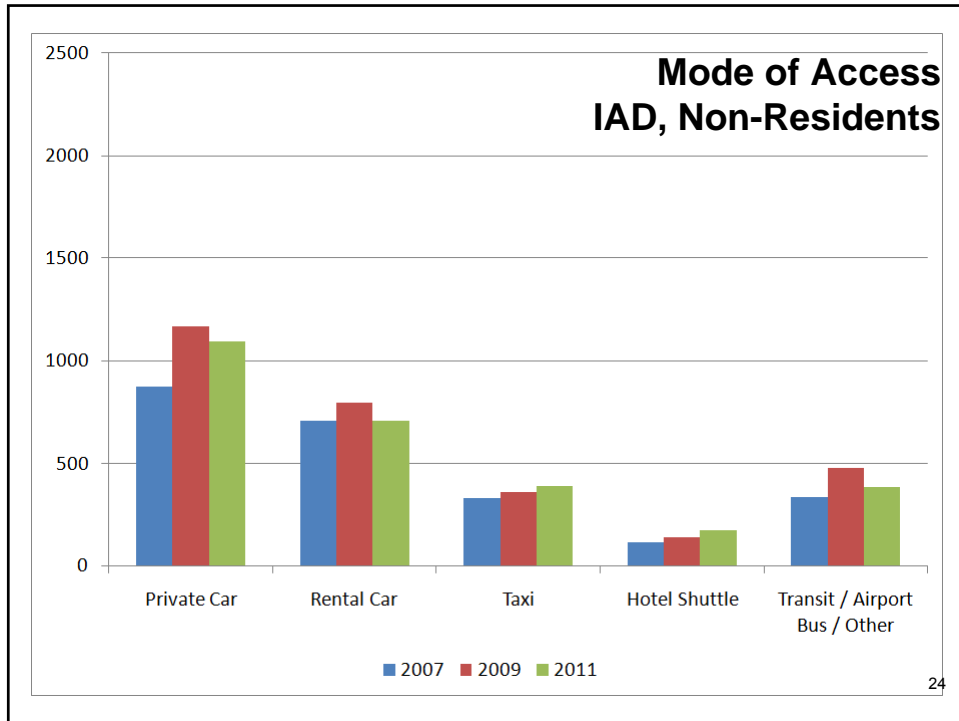
Mode of Access – BWI Residents



19







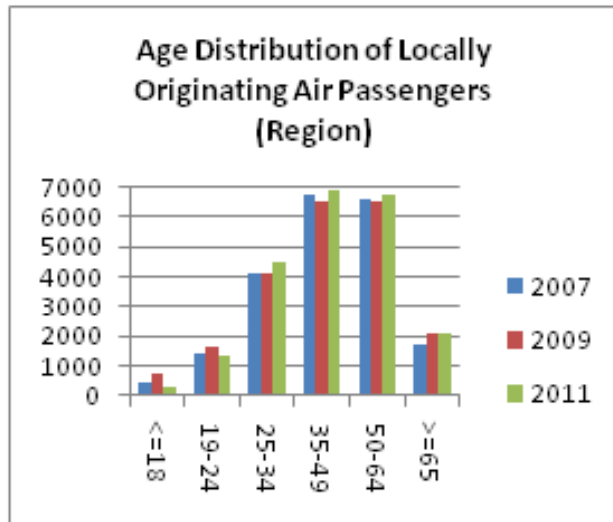
Air Travel Characteristics Findings

- ▶ Age
- ▶ Income

25

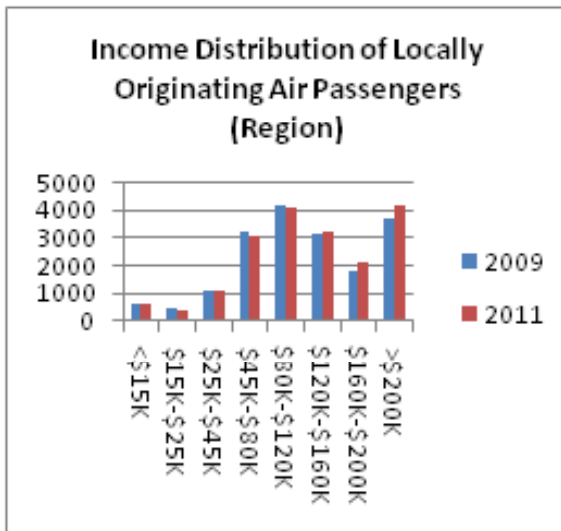
Air Traveler Age

- Slight increase in 25-34, 35-49, and 50-64 age groups over 2009
- Regional age distribution virtually identical to all three individual airports



26

Air Traveler Income



- A little over half of regional locally originating air passengers had annual household incomes of at least \$120,000, an increase over 2009 and 2007
- More than half of resident local originations have annual household incomes of more than \$120,000
- Affluence explains lack of price (airfare) sensitivity in airport choice

27

2006-2010 ACS Median HH Income for Region (CSA) is \$78,040; \$51,914 for Nation

Conclusions...so far (1)

- ▶ Airport passenger traffic has grown over 2009
- ▶ Proportion of business travel has grown over 2009 at all airports
- ▶ Proportion of travel by area residents has grown over 2009 at all airports
- ▶ Each airport's regional share of passengers generally constant since 2007

28

Conclusions...so far (2)

- ▶ Proportion of local originations (using airport ground access network) generally constant but travel base growing
- ▶ Private auto dominant mode of access except at DCA
- ▶ Most locally originating travelers affluent and value time highly

29

Next Steps (1)

- ▶ Comments on report
- ▶ Additional cross-classifications and analysis
 - ▶ Airport choice by resident / non-resident
 - ▶ Airport choice by business / non-business travel
 - ▶ Trip origin by resident / non-resident
 - ▶ Trip purpose by resident / non-resident
 - ▶ Others

30

Next Steps (2)

- ▶ Geocode survey file and conduct further analysis
- ▶ 2011 Air Passenger Survey Geographic Findings Report (to Aviation Technical Subcommittee and TPB Technical Committee, Spring 2013)
- ▶ Spring 2013: begin preparations for Fall 2013 Air Passenger Survey

31