



Preliminary Master Plan of Transportation

pgplan.org/go

 THE MARYLAND-NATIONAL CAPITAL PARK AND PLANNING COMMISSION
Prince George's County Planning Department

Presentation

**Planning Directors Technical
Advisory Committee Meeting**

July 18, 2025





Welcome & Introductions



Agenda

01

Video Presentation

02

Purpose

03

Overview

04

Timeline

05

Resources

06

Contact Us



PROJECT OVERVIEW

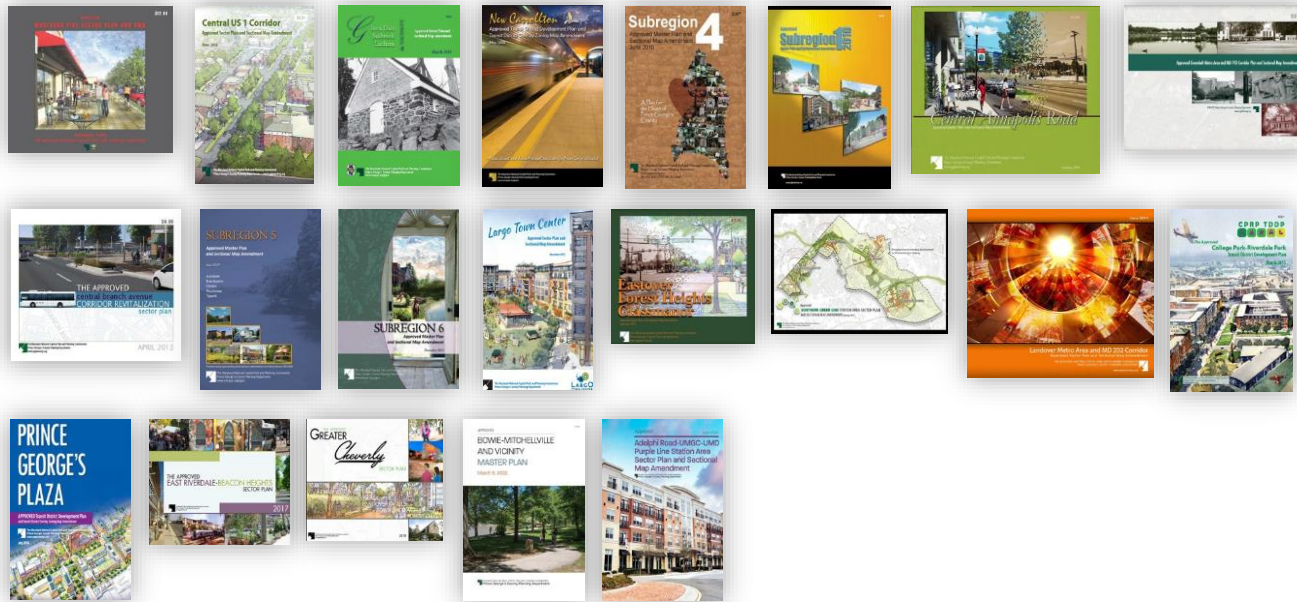
What is Go Prince George's?

- » A Countywide Functional Master Plan that implements **Plan 2035** and replaces the 2009 *Approved Countywide Master Plan of Transportation*
- » A single document that combines previously adopted **transportation policies and recommendations** and updates it with a comprehensive, multimodal approach throughout the County
- » Enhances implementation tools to support capital improvement projects and development review processes



PROJECT OVERVIEW

Updates Since 2009 Approved MPOT

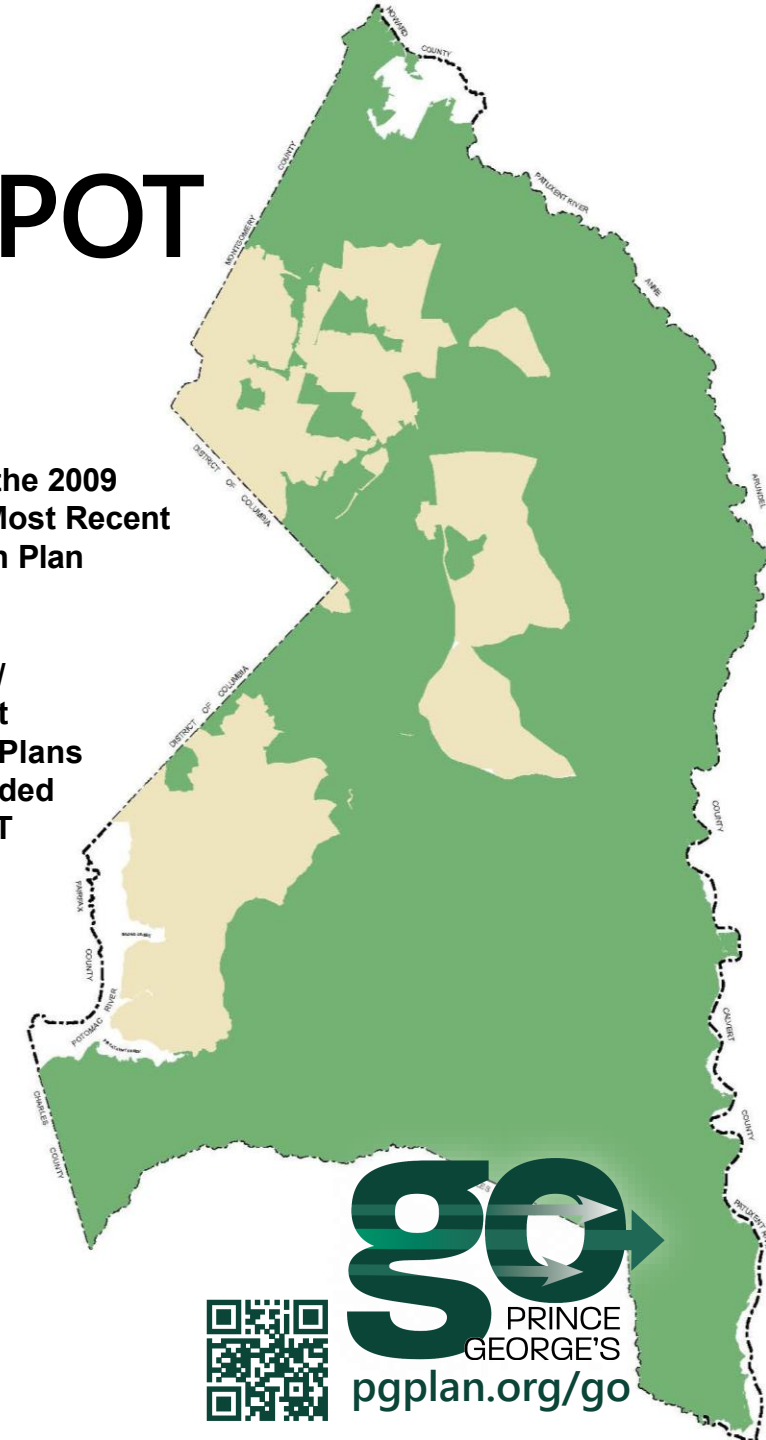


**Areas Where the 2009
MPOT is the Most Recent
Transportation Plan**



**Areas Where
Master/Sector/
Transit District
Development Plans
Have Superseded
the 2009 MPOT**

21 master, sector, and transit district development plans approved (covering approx. 78% of the County) by the Prince George's County District Council – each with hundreds of unique transportation and mobility policies and strategies



go
PRINCE
GEORGE'S
pgplan.org/go

Public Outreach & Agency Partners



» **373** People registered to attend three virtual Countywide meetings (2021-2022)

» **43+** events and meetings with stakeholders from (2021-2024)

» **+** Ongoing coordination meetings with agency partners and consultants



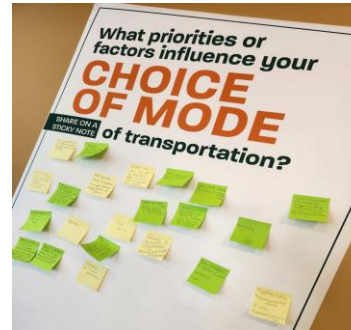
Current Outreach

» Ongoing conversation with attendees, those who emailed the project team, and at other Community Events/Meetings:

- **Planning Department Open Houses** – March 2025 - 154 People registered for the two days of March Open Houses at Largo Headquarters
- **Love My Largo** – April 2025
- **Plan 2035 Implementation Task Force** – April 2025
- **Bike to Work Day** – May 2025
- **Coalition for Smarter Growth Presentation** – June 2025
- **Active Transportation Advisory Group Meeting** – June 2025
- **MTA Southern Maryland Rapid Transit Meeting** – June 2025
- **District 6 Crab Feast** – June 2025

» Initial Feedback

- Questions about the Joint Public hearing Process/how best to provide comments on the plan
- Clarification on APF improvement recommendations
- Reconciliation of other agency projects (SMRT, WMATA Better Bus and DPW&T Transit Vision Plan)
- Federal impact on plan
- Plan's web readability and accessibility
- Facility Recommendation Map Improvements
- Other specific segment recommendations for multimodal improvements





PROPOSED PLAN

What's in Go Prince George's?

Section I

Introduction
and Background

Section II

Policies and
Strategies

Section III

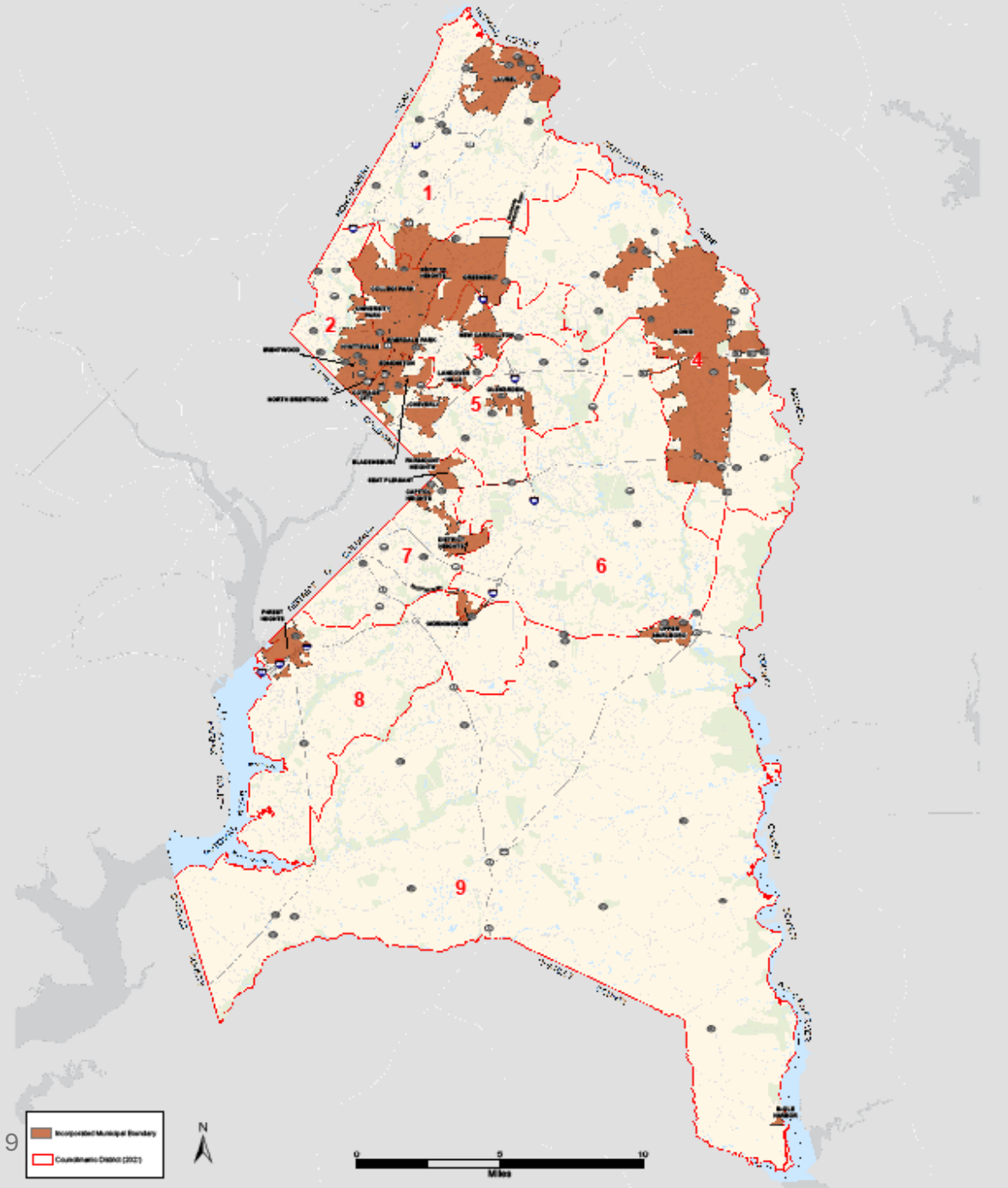
Facilities
Recommendations

Section IV

Monitoring
and Evaluation

Section V

Appendices



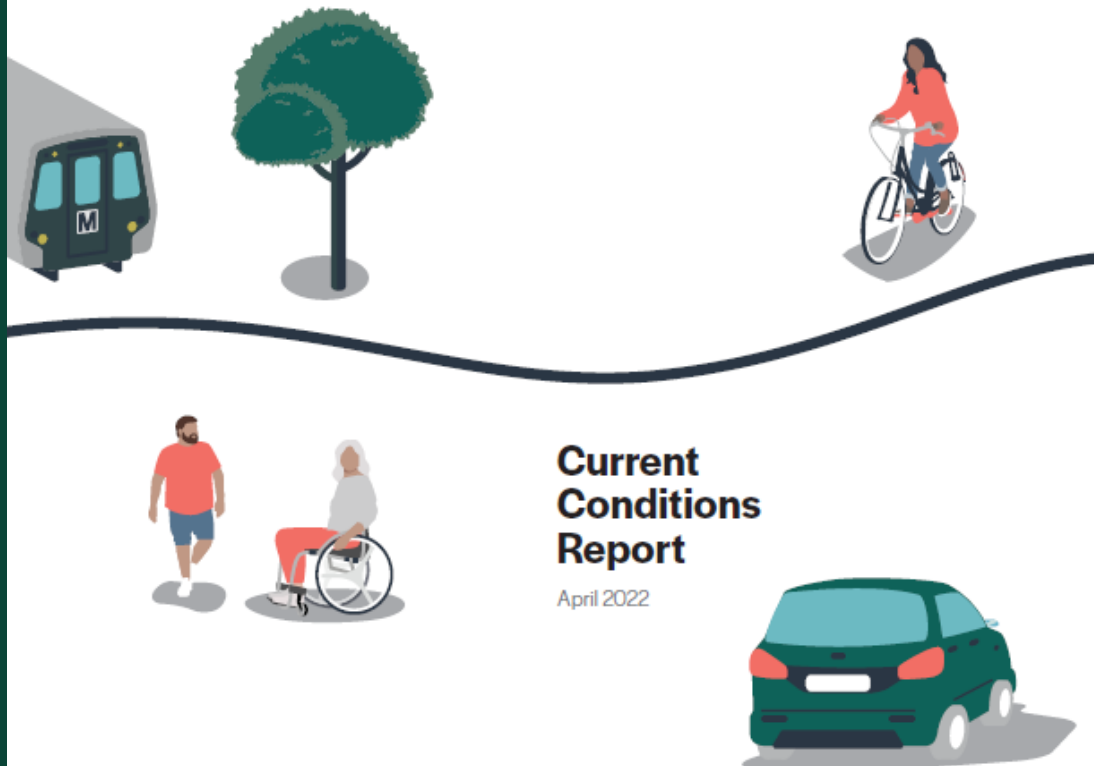
Section I

Introduction and Background



Prince George's County

Master Plan of Transportation 2035



Current Conditions Report

April 2022

Current Conditions



Current Conditions Report



6,925

Miles of
sidewalks and
bikeways*



15

Metro
stations



11

Purple Line
Stations
(under
construction)



8

MARC
stations



1

Stop along
Northeastern
Corridor



7

Local bus
services



Major Roads:
I-95, I-495,
US 50, US 301

+ NPS
Roadways



go
PRINCE
GEORGE'S
pgplan.org/go



Section II

Policies and Strategies

Roads & Highways



Create a hierarchal network of roads and highways to facilitate efficient vehicular travel throughout the county



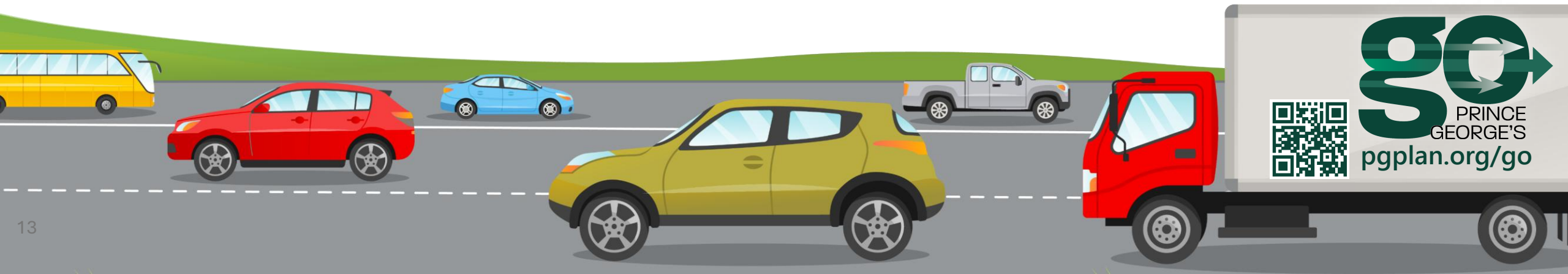
Improve system performance through management strategies to keep commuter traffic on highways and major roads to prevent encroachment into residential neighborhoods



Establish realistic and appropriate level-of-service standards



Improve multimodal connectivity through strategic reconstruction of road and Complete and Green Streets



Pedestrians & Sidewalks



Construct and maintain complete sidewalk system

- ✓ CPTED design principles
- ✓ Pedestrian refuge islands and other protection
- ✓ Continuous lighting



Provide Safe Routes to School

- ✓ Conduct school route analyses
- ✓ Coordinate with PGCPs



Ensure pedestrians can safely cross streets and roads

- ✓ Crosswalks at intersections and mid-block
- ✓ Pedestrian signals



Ensure safety within pedestrian realm

- ✓ Prioritize corridors on the High-Injury Network
- ✓ Conduct formal speed studies and pursue grants



Transit



Enhance mobility, equity, and placemaking at every transit stop/station in the County

- ✓ Create mobility hubs
- ✓ Implement paratransit, microtransit, shuttles
- ✓ Other first- and last-mile connections



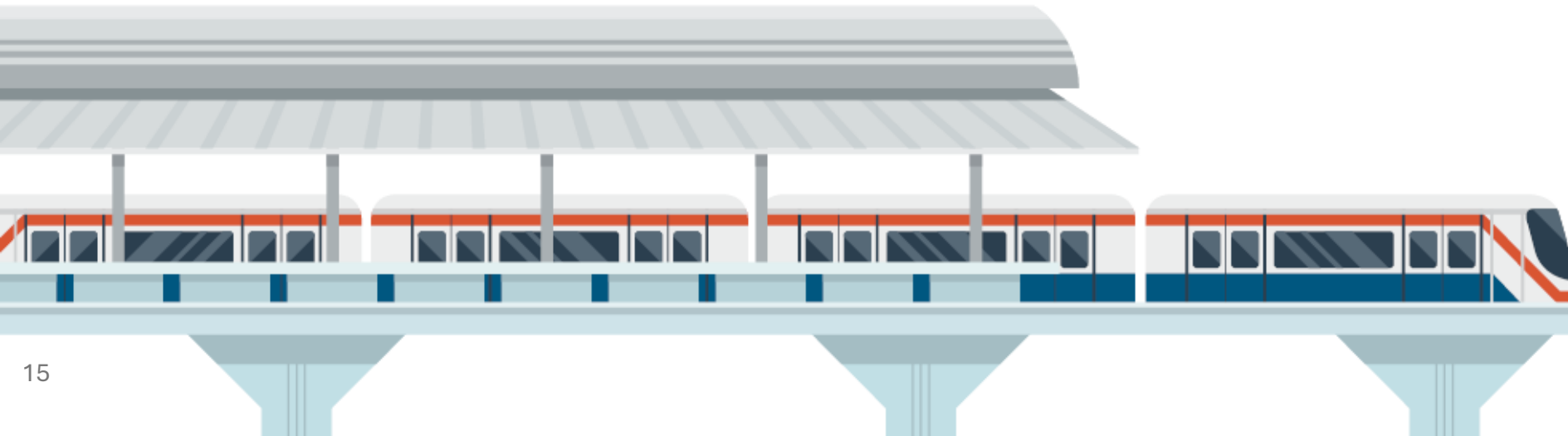
Increase transit services and safe access to and from those services to help spur "15-minute cities"

- ✓ Capture more residents within a 15-minute walk or bike shed
- ✓ Maintain and expand park and ride facilities so that residents live within six miles
- ✓ Support ongoing transit service expansions and improvements



Improve bus fleet and expand bus priority measures and other treatments for network development

- ✓ Enhance Bus Rapid Transit option in the County
- ✓ Magnify the quality, frequency, and footprint of local bus services
- ✓ Expand electric bus fleet



Bikeways & Shared-use Paths



Prioritize the development of a County bicycle and shared-use network

- ✓ Prioritize infrastructure projects providing grade-separated crossings
- ✓ Consider road diets to allocate for bicycle facilities
- ✓ Identify safe alternatives for connections
- ✓ Connect all Plan 2035 designated centers
- ✓ Create an integrated network to facilitate mid- to long-distance travel



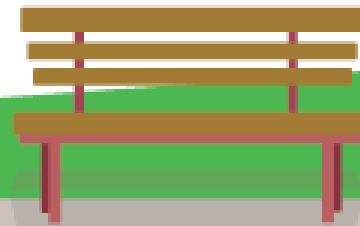
Support low-stress bicycle use and emphasize Cycling Level of Traffic Stress

- ✓ Provide appropriate signage and pavement markings for low-volume streets



Capitalize on off-road ROW creating greenways, shared-use paths, and natural trails

- ✓ Utility easements
- ✓ Abandoned railroad right-of-way
- ✓ Stream valleys were environmentally feasible
- ✓ Enhance hiker/equestrian trails



Micromobility & TDM



Expand micromobility services

- ✓ Expand Capital Bike Share Footprint
- ✓ Collaborate with scooter and e-bike providers for expansion
- ✓ Establish speed thresholds to balance infrastructure needs



Coordinate with transportation network companies as part of transportation demand management

- ✓ Ensure abundant and safe passenger loading/unloading areas
- ✓ Incorporate into areas of multimodal connections



Establish and maintain Transportation Demand Management Districts for vehicles reduction measures



Complete and Green Streets



Enhance multimodal neighborhood experience and ensure streets safely accommodate all users

- ✓ Manage parking and curb space to advance land use, economic prosperity, and design goals of Plan 2035
- ✓ Encourage use of micromobility by identifying locations for vehicle parking



Comply with Maryland State Complete Street Standards

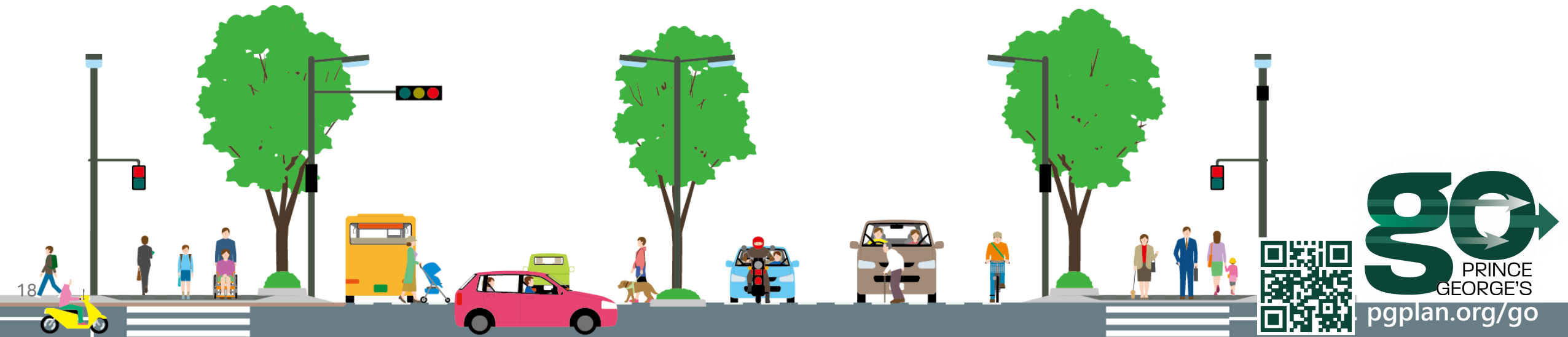
- ✓ Update applicable roadway improvements to the equivalent Urban Street Design Standard
- ✓ Ensure ADA compliance in sidewalks



Create attractive gathering, recreational, and/or contemplative public spaces in or along public rights-of-way



Ensure that sidewalks are shaded by native, well-maintained street trees where feasible



Other Modes

» Expand network of designated water trails

- ✓ Use the water trails plan developed by the Maryland Office of Tourism to guide development
- ✓ Enhance the Patuxent River Water Trail
- ✓ Increase opportunities for utilization of the Anacostia and Potomac River

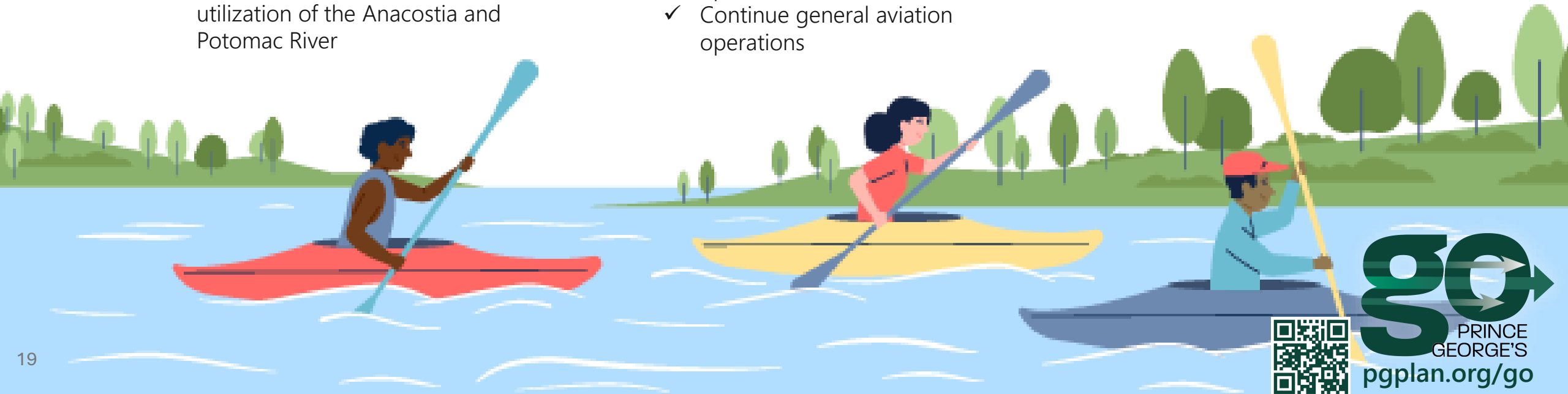
» Explore opportunities to support Urban Air Mobility

- ✓ Encourage and accommodate heliports and vertipads
- ✓ Incorporate advanced air mobility systems to help regulate County airspace and eliminate conflicts
- ✓ Continue to support critical operations at Joint Base Andrews
- ✓ Continue general aviation operations



Other plan focuses

- ✓ Special Roadways and County Heritage
- ✓ Goods Movement
- ✓ Smart Infrastructure
- ✓ Sustainability





Section III

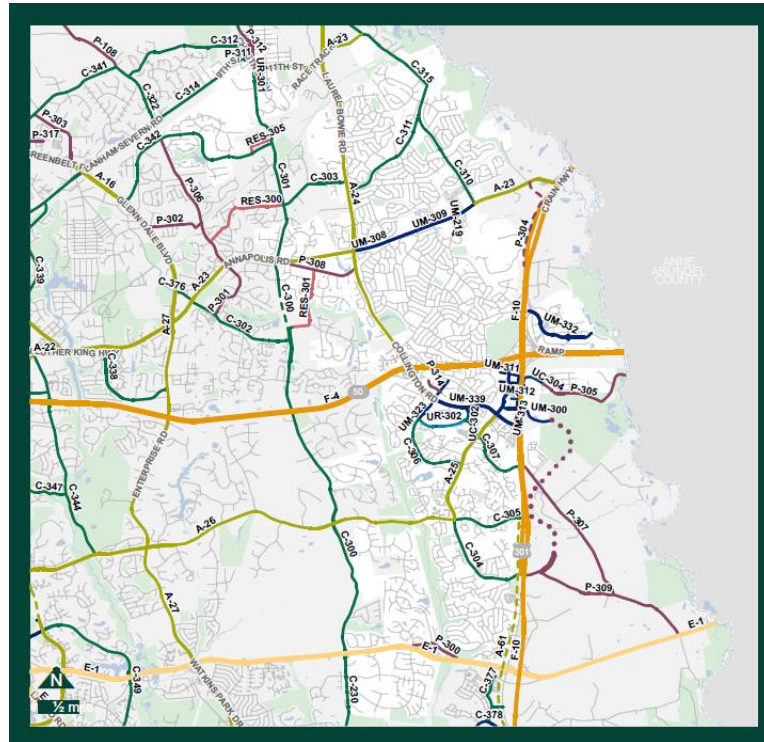
Facility Recommendations



Road Recommendations

Table 9. Collector Road Recommendations

MPOT ID	Route ID	Facility Name	Ownership	District	From	To	Min. ROW	Bicycle or Shared-Use Facility	Vehicle Lanes	Master/Sector Plan
C-101		Baltimore Drive	DPW&T	1	MD 212 (Powder Mill Road)	Calverton Boulevard	100	Barrier-separated bicycle facility	4	Replaces 2010 Subregion 1 MP
C-103		Montpelier Drive	DPW&T	1	Murkirk Road	MD 197 (Laurel-Bowie Road)	80	Future study	2	Replaces 2010 Subregion 1 MP
Notes: Amends the 2010 Approved Subregion 1 Master Plan by recommending a study of future bicycle accommodation.										
C-103		Brook Bridge Road	DPW&T	1	MD 197 (Laurel-Bowie Road)	Patuxent River (Anne Arundel County line)	80	Future study	2	Replaces 2010 Subregion 1 MP
Notes: Amends the 2010 Approved Subregion 1 Master Plan by recommending a study of future bicycle accommodation.										
C-104		Briggs Chaney Road	DPW&T	1	Montgomery County line	Old Gunpowder Road	80-80	Shared-lane markings or bike-on-shoulder	2	Replaces 2010 Subregion 1 MP
Notes: Sufficient ROW exists to add sidewalks and bicycle accommodation.										
C-105		Switzer Lane	Other	1	MD 206 (Konterra Drive)	Approximately 350 feet south of Chevy Chase Drive/Switzer Road	80	Future study	4	Replaces 2010 Subregion 1 MP
Notes: Amends the 2010 Approved Subregion 1 Master Plan by recommending a study of future bicycle accommodation.										



Functional Classification & Facility Recommendations



Recommendations for streets, roads, and highways, as well as shared-use path and trail facilities



Establishes and refines the Functional Classification System for Roads and Streets, including incorporation of Urban Street Design Standards



Section IV

Monitoring and Evaluation

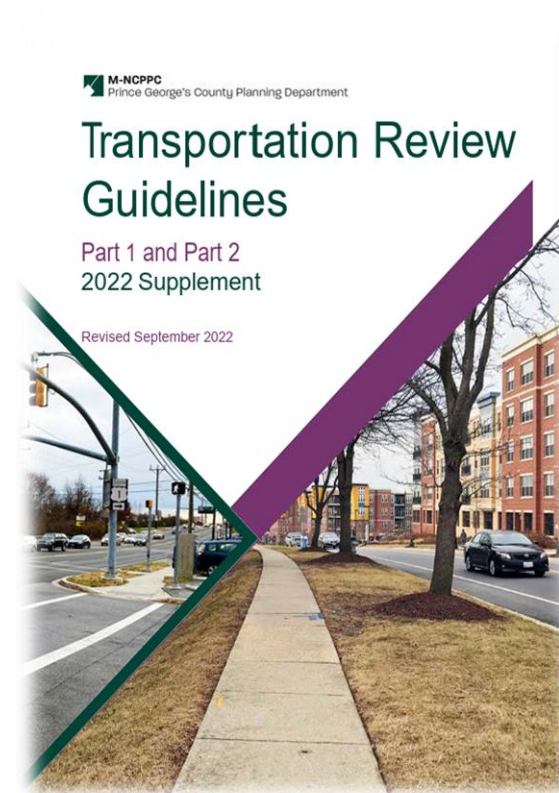
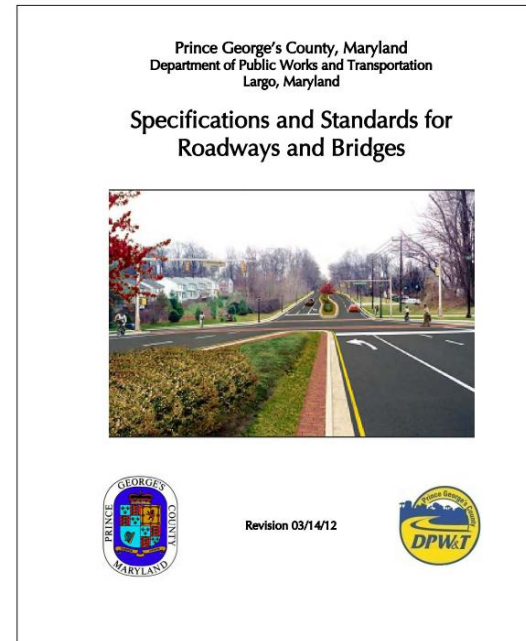


Evaluation and Monitoring

» Monitoring and tracking progress through Performance Measures, including facilities constructed, commuting greenhouse gas emissions, housing and transportation affordability, and mode split

» Action items fitting in several categories to implement enact the policies and strategies of several modes

» Plans and guidelines for parallel monitoring (e.g Public Facilities Report and Transportation Review Guidelines) and update



Preliminary Go Prince George's Functional Master Plan

Public Facilities Report

Pursuant to Section 27-645(b)(1) of the Prince George's County Code, which requires that prior to adoption or amendment of any preliminary plan, the Planning Board shall submit its proposals for public facilities in the plan to the District Council and County Executive to review, provide written comments, and identify any inconsistencies between the public facilities proposed in the plan and any existing or proposed state or county facilities including roads, highways, and other public facilities. The tables below identify the proposed public facilities to implement the vision and goals outlined in the Preliminary Go Prince George's Functional Master Plan. In developing this preliminary plan, the County team had numerous discussions and touch points with a wide variety of local, county, and state agencies to ensure they had visibility into the vision, goals, and facility recommendations.

Legend

MPOT ID	Typology	MPOT ID	Typology
Street Facilities		Road Facilities	
U-	Urban Center	A-	Arterial
UM-	Mixed-Use Boulevard	MC-	Major Collector
UC-	Neighborhood Connector	C-	Collector
UR-	Neighborhood Residential	P-	Primary
UI-	Urban Industrial	I-	Industrial
US-	Shared Street	Highway Facilities	
UA-	Alley	F-	Freeway
RES-	Residential	E-	Expressway





Section V

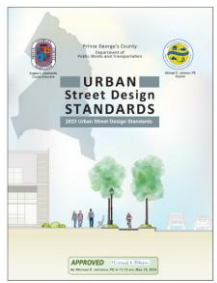
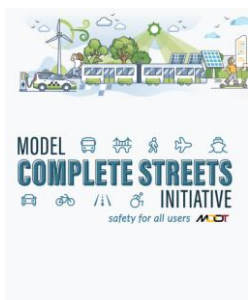
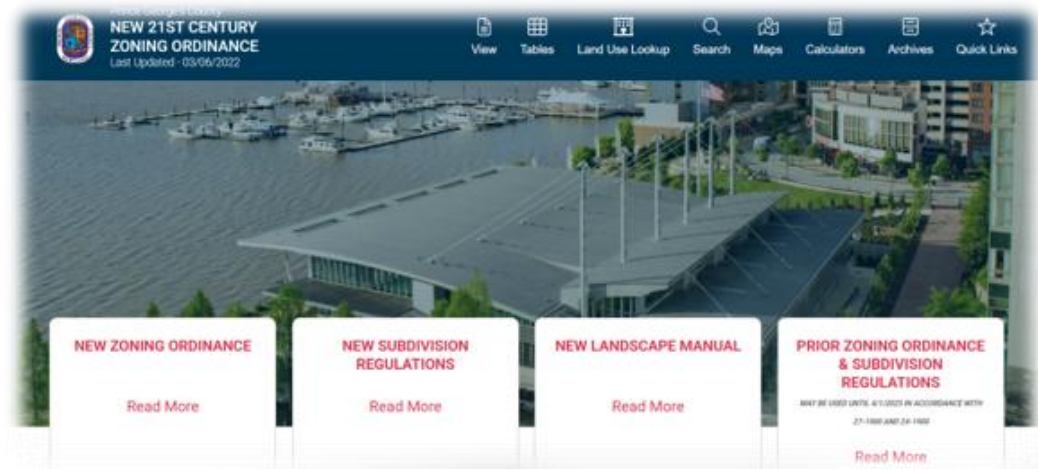
Appendix

Appendices

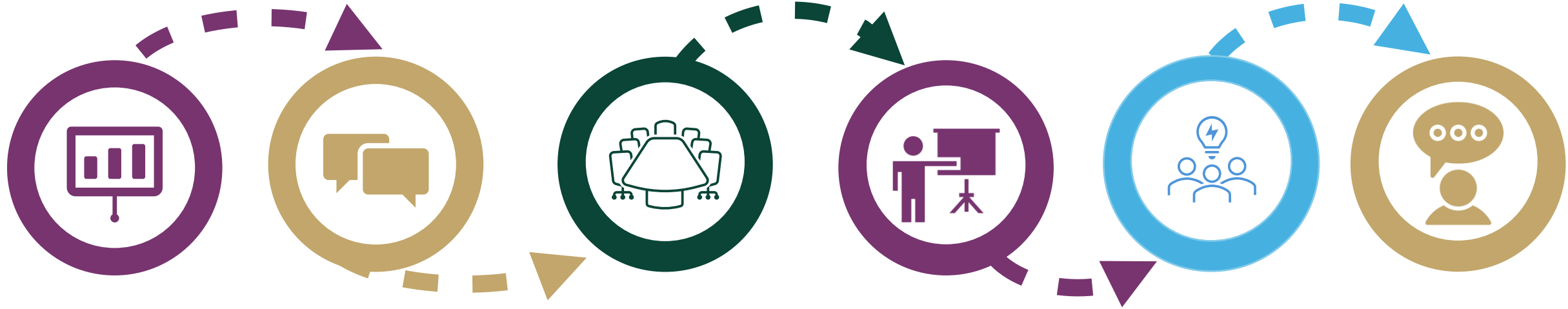
» Resources used in the creation of the plan

» Resources used to provide guidance for future planning

» Core and Resource Team Acknowledgements



Timeline



Preliminary Plan Review

November 2024
Policies/Strategies
and Facility
Recommendations

Agencies/ Transportation Revisions

December 2024 –
January 2025
Revise plan as needed
to address agency
input and finalize for
publication

Planning Board and Public Release

January - February 2025
Discussion with
Planning Board,
Permission to Print, and
release for public review

Open House

March 2025
Community
and Council
Open House

Community Engagement

Remainder of 2025
Discussions with
Council Members,
Municipalities, and
Advisory Groups

Public Testimony

Early 2026

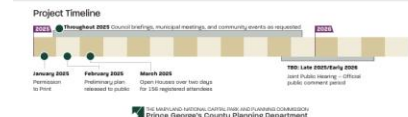
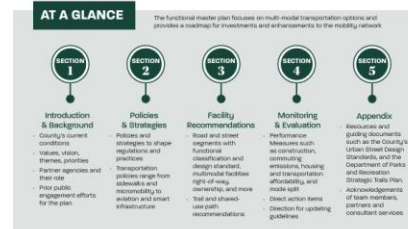
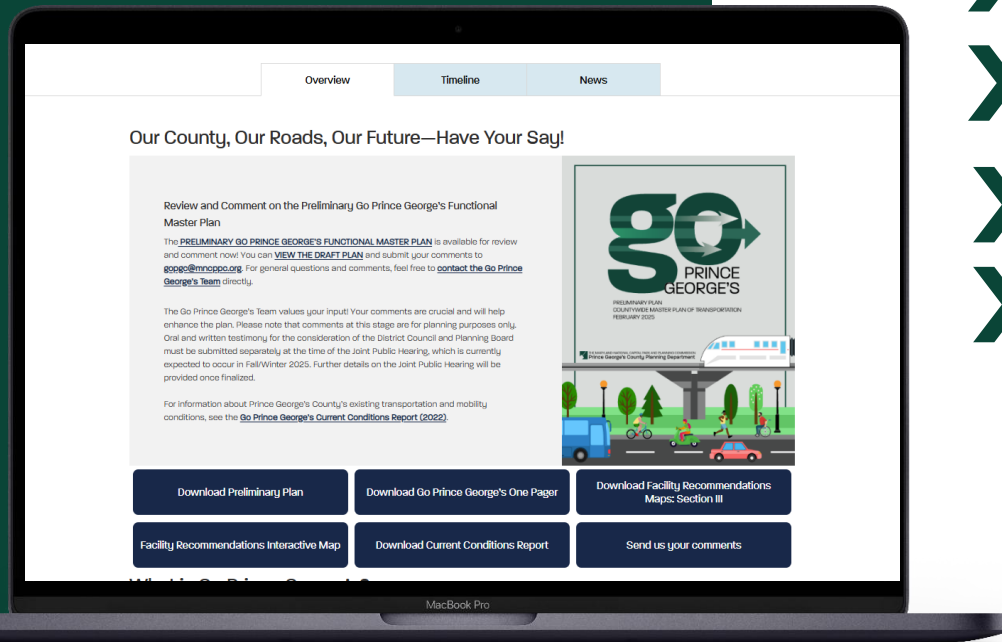




MORE INFORMATION

Go Prince George's Webpage

- » Overview/One-Page Summary
- » Timeline
- » Facility Mapbook and Web Map
- » Review and Comment
- » News



Go Prince George's At-A-Glance



Our Partners include all 27 municipalities and



» pgplan.org/go

Email gopgc@mncppc.org



Where can I find copies?

Find the full list of specific locations at pgplan.org/go



18

libraries



46

M-NCPPC
Parks and
Recreation facilities



27

Municipal offices



11

Council member
offices



M-NCPPC
Largo HQ
Information Counter



Contact Us



**Lakisha Hull, AICP,
LEED AP BD+C**
Planning Director



James Hunt, MPA
Deputy Director
of Operations



Dharm Guruswamy

Planner IV, Project Manager
Transportation Planning Section,
Countywide Planning Division

dharm.guruswamy@ppd.mncppc.org



Evan Tenenbaum, AICP

Planner II, Deputy Project Manager
Transportation Planning Section,
Countywide Planning Division

evan.tenenbaum@ppd.mncppc.org

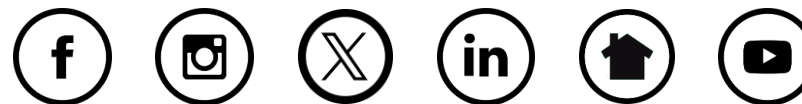


Katina Shoulars

Division Chief
Countywide Planning Division

katina.shoulars@ppd.mncppc.org

pgplanning.org ● planpgc2035.org
Send questions to gopgc@mncppc.org



Follow us @PGPlanningMD

