



City of Falls Church Shared Mobility Devices Pilot Program



Introduction to the City of Falls Church

- Area of 2.2 sq. miles between Arlington County and Fairfax County
- Population of roughly 15,000
- “Small town character in an urban setting”



Timeline

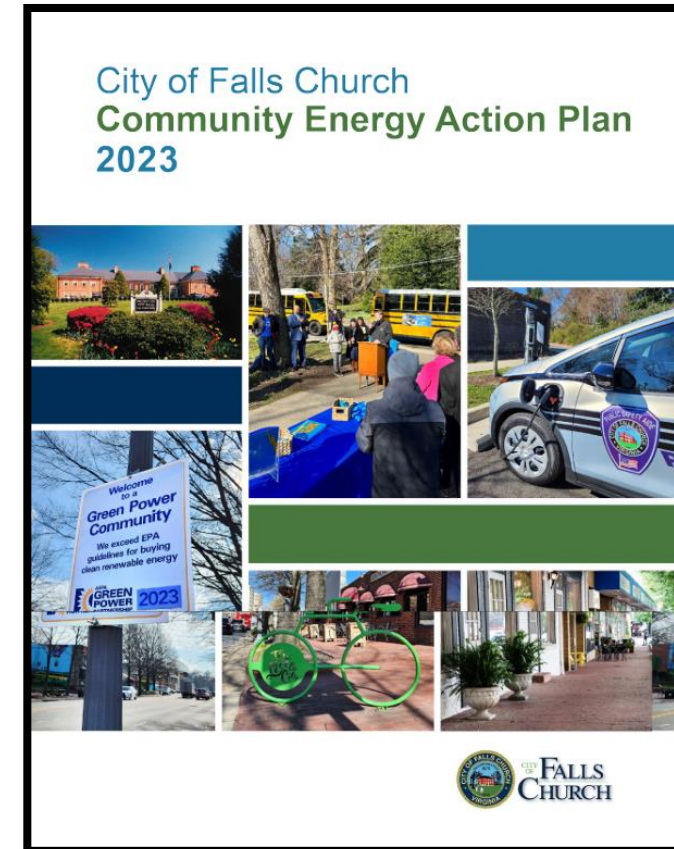
- **July 2019:** VA grants localities ability to regulate dockless mobility devices for hire
- **January 2020:** Shared Mobility Devices Demonstration Project in Falls Church opens, but City received zero applications from SMD operators
- **March 2026:** City Council approves (new) Shared Mobility Devices Pilot Program
- **June 2026:** Request for Applications distributed to operators



Photo: arlingtonva.us

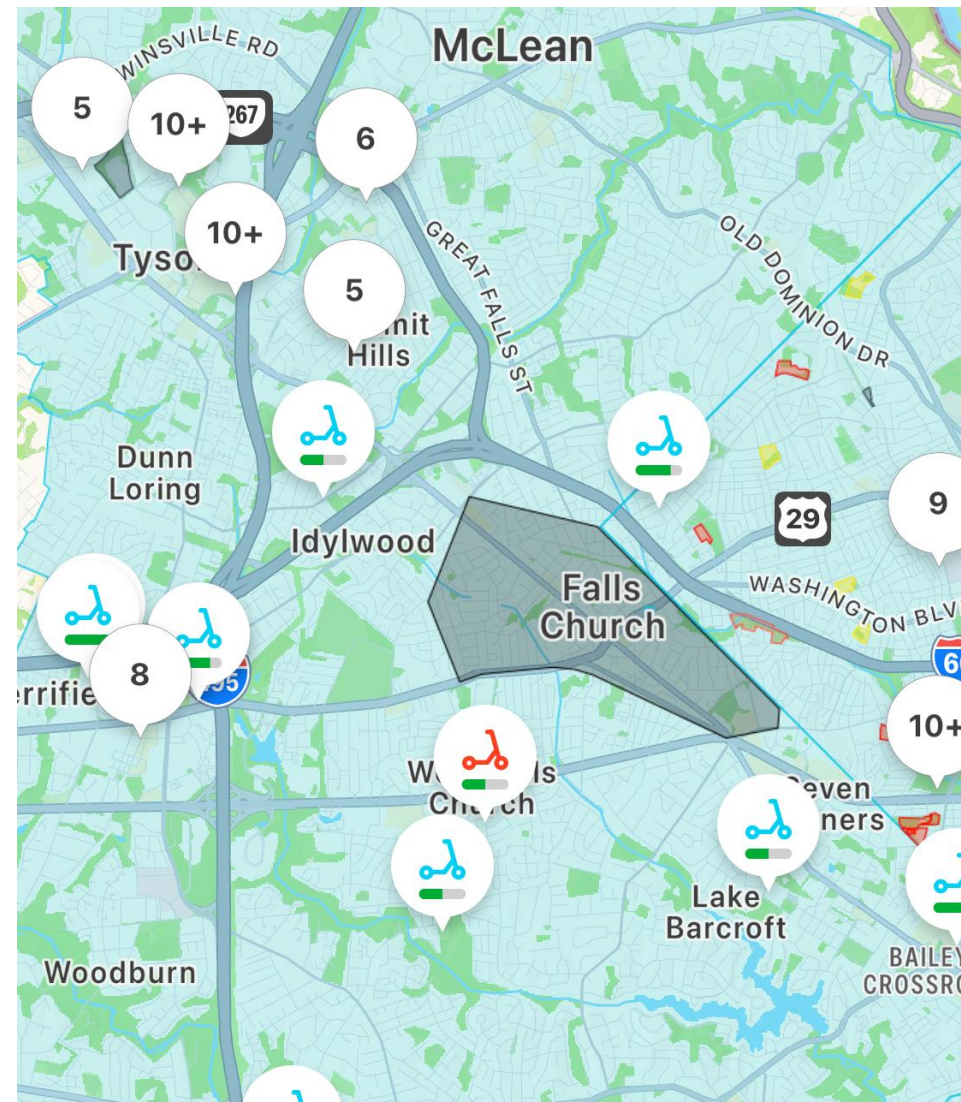
Policy Guidance

- **Comprehensive Plan Chapter 7 - Mobility for All Modes (2014):** establishes a vision for expanded transportation mode choice and stronger connections to the regional transportation system
- **Community Energy Action Plan (2023):** Directs the City to promote and support scooters and e-bikes, including the review and revision of guidance for SMD companies to operate in the City
- **City Council Strategic Priorities (2024):** Strategies include encouraging and supporting transportation alternatives in the City
- **Bicycle Master Plan (2025):** Establishes goals including increased mode share in the City of Falls Church, connecting bicycle infrastructure to the networks of neighboring communities, and maintaining, operating, and growing bike infrastructure



Regional Context

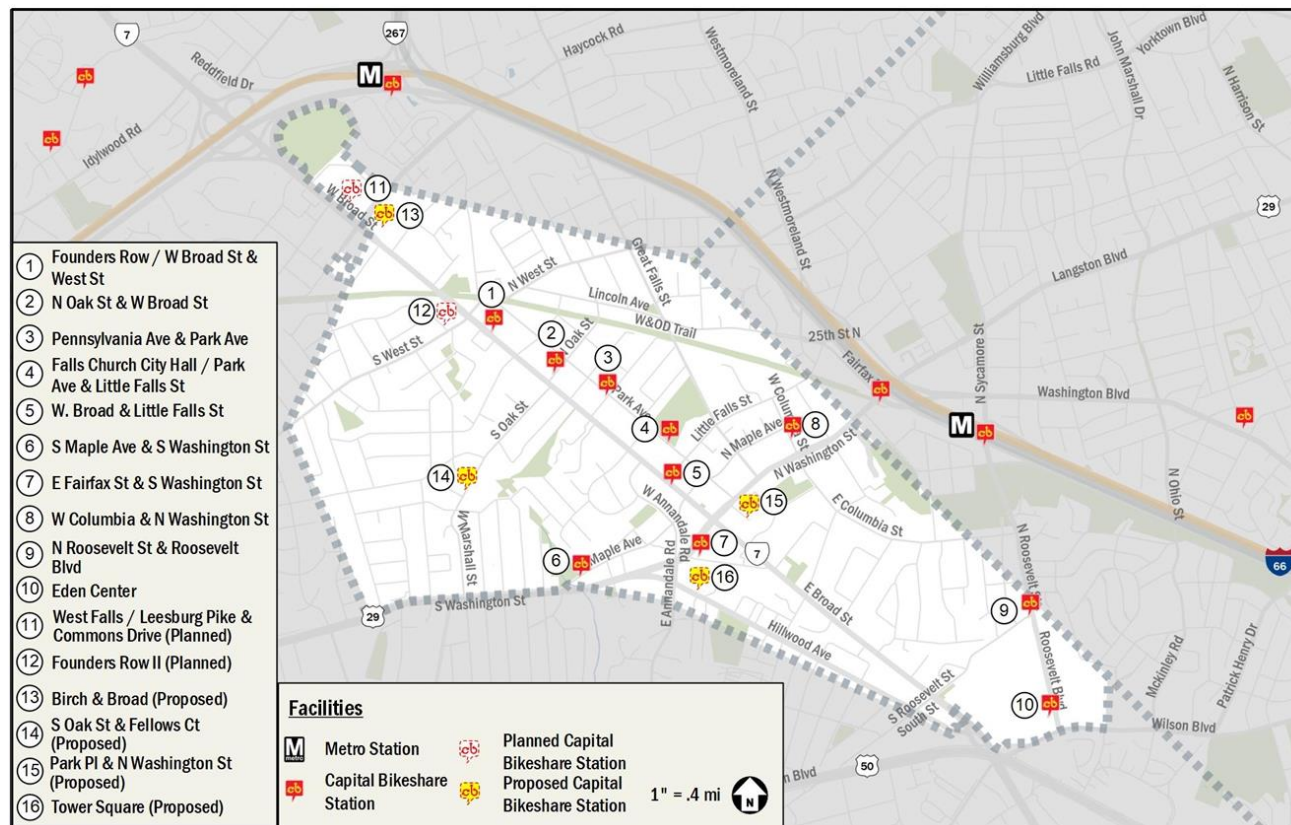
The City is surrounded by scooters and e-bikes, but it is a designated “no-go zone”



Screenshot of Bird App

Role of Shared Mobility Devices

- SMDs are frequently used as a first mile/last mile solution
- SMDs increase mode choice and reduce reliance on any single mode, such as automobiles
- SMDs can provide new connections to the East Falls Church and West Falls Church Metro stations
- SMDs can provide more options for in-town trips



How to bring SMDs into “The Little City”

The Plan: Revive 2019 Shared Mobility Devices Demonstration Program, but make necessary fixes

- Lower fees
- Allow options for single operator
- Simple rules (model neighbors)
- Be flexible (“*Pilot* Program”)



Successes and Challenges

Successes:

- City Council approved the Pilot Program swiftly
- Earned support from City boards and commissions
- Interest from operators
- Program is currently moving forward

Challenges:

- A few comments from uneasy residents
- Internal process takes time to define
- Working in context challenges outside City lines

Lessons Learned

- Planning for flexibility
- Waiting for the right conditions
- Adapting to fit City's specific needs
- Working together as a large team
- Involving the community early



Next steps

- In July 2026, the City will review applications and select operator(s)
- Then, the SMD Pilot Program runs for 12 months
- After 12 months, the City will consider these options:
 - Extend pilot program
 - Create permanent Shared Mobility Device Program, including ordinance
 - Return to previous conditions



Thank you

Please share any comments, questions, or tips with sharedmobility@fallschurchva.gov

All written communication including emails are subject to the public disclosure requirements of the Virginia Freedom of Information Act.

The City of Falls Church is committed to the letter and spirit of the Americans with Disabilities Act. To request a reasonable accommodation for any type of disability, call [571-402-9102](tel:571-402-9102) (TTY [711](tel:711)), or email PublicInfo@fallschurchva.gov

Let's Stay in Touch

 [@CityOfFallsChurchGov](https://www.facebook.com/CityOfFallsChurchGov)

 [@CityOfFallsChurchGov](https://www.instagram.com/CityOfFallsChurchGov)

 [@FallsChurchGov](https://twitter.com/FallsChurchGov)

 [@CityofFallsChurchGovernment](https://www.youtube.com/CityofFallsChurchGovernment)

City Hall

300 Park Ave.
Falls Church, VA 22046

Website: FallsChurchVA.gov

Email: PIO@cityoffallschurchva.gov