

## Please read:

The following pages describe a portion of the draft Regional Freight Network. Immediately following this page there are a series of maps that show the location of the routes comprising the draft Regional Freight Network. A table that provides additional information about each route, including the reasoning behind its inclusion, follows the maps.

Please review and let me know if you think there should be any additions or deletions to the network along with the reasoning behind your inclusions or deletions. I would appreciate responses by Friday, December 12, 2014. Here is my email address:

[jschermann@mwkog.org](mailto:jschermann@mwkog.org)

Please remember that the primary purpose behind the creation of the Regional Freight Network is to allow for the development of freight performance measures and not to identify official “truck routes”, designation of which is in the purview of the State of Maryland, the Commonwealth of Virginia, and the District of Columbia.

To better make sense of the network, the individual routes are organized into the following three categories, or “tiers”.

- Primary Tier: (dark reddish brown on the map)
  - Highest volumes
  - Part of the National Network<sup>1</sup>
  - “Through” trucks
  - How trucks typically enter and leave the region
- Secondary Tier: (orange on the map)
  - Allows trucks to permeate the region
  - Provides access to important freight generators and attractors
- Connector: (purple on the map)
  - Last mile connectivity

Thanks in advance for your help in finalizing the Regional Freight Network.

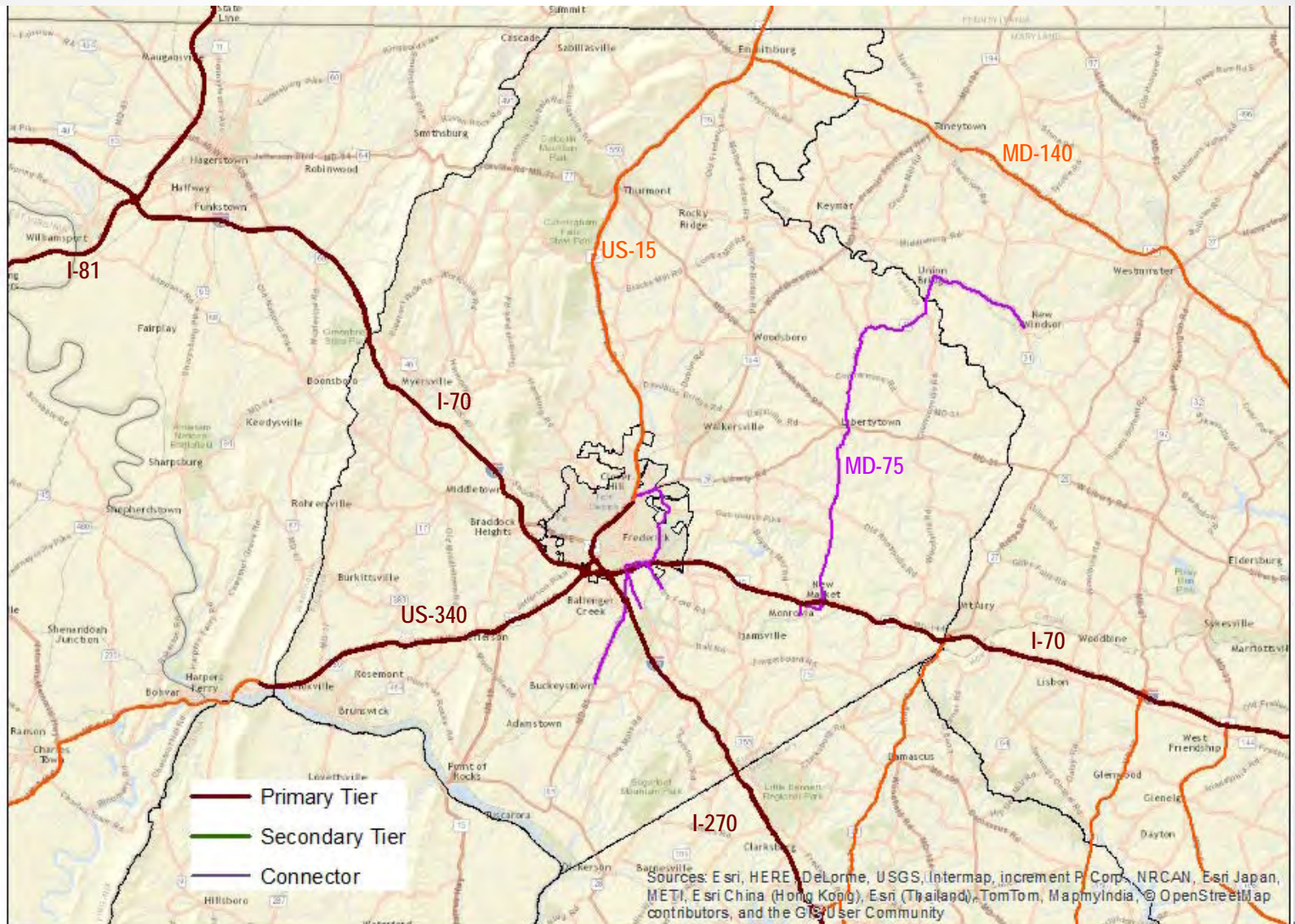
Jon Schermann  
Metropolitan Washington Council of Governments

---

<sup>1</sup> Except for MD-200 (Intercounty Connector) which is not yet part of the National Network.

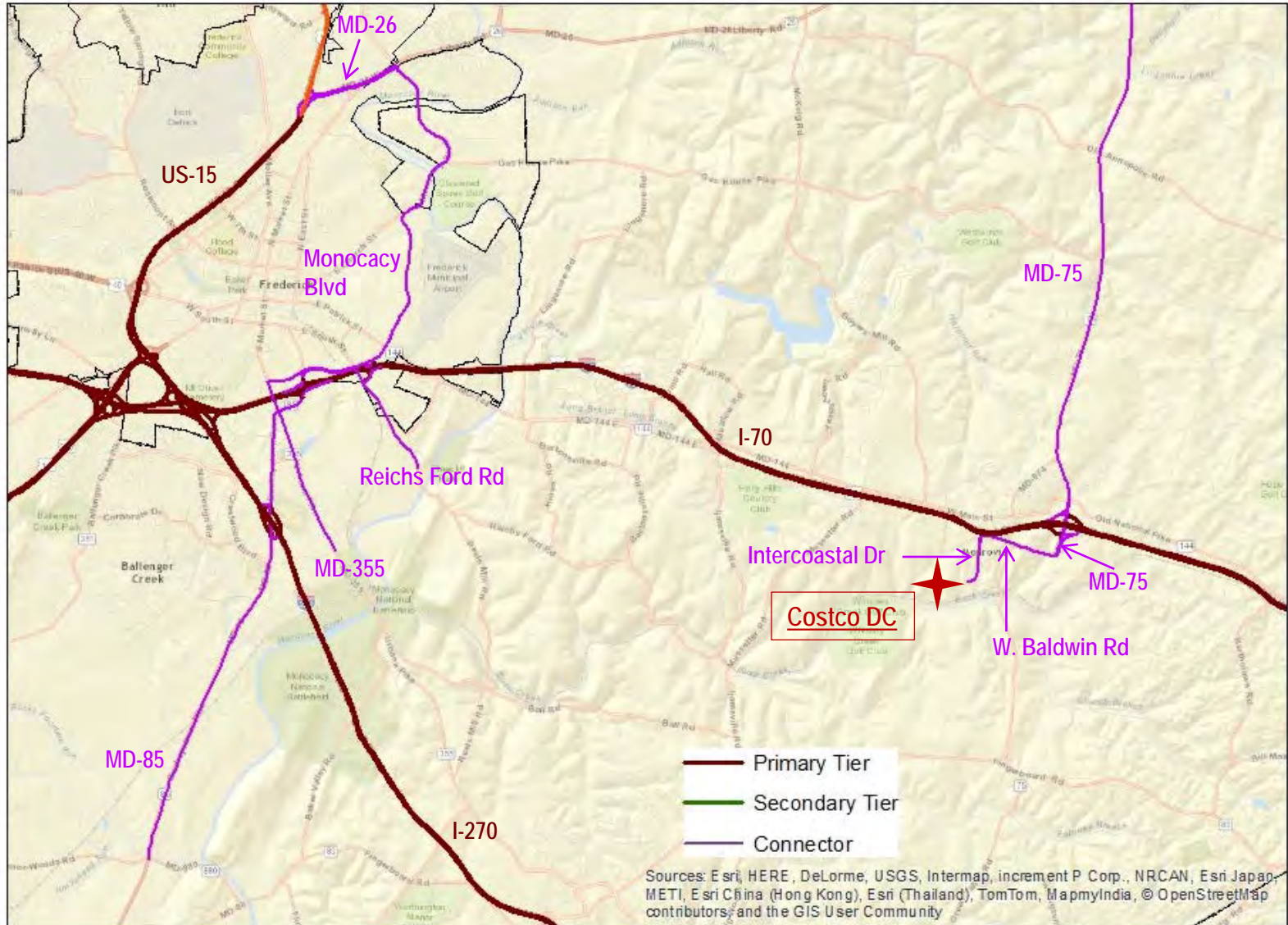
# DRAFT Regional Freight Network

## Frederick County Area



# DRAFT Regional Freight Network

## Frederick County Area - Detail

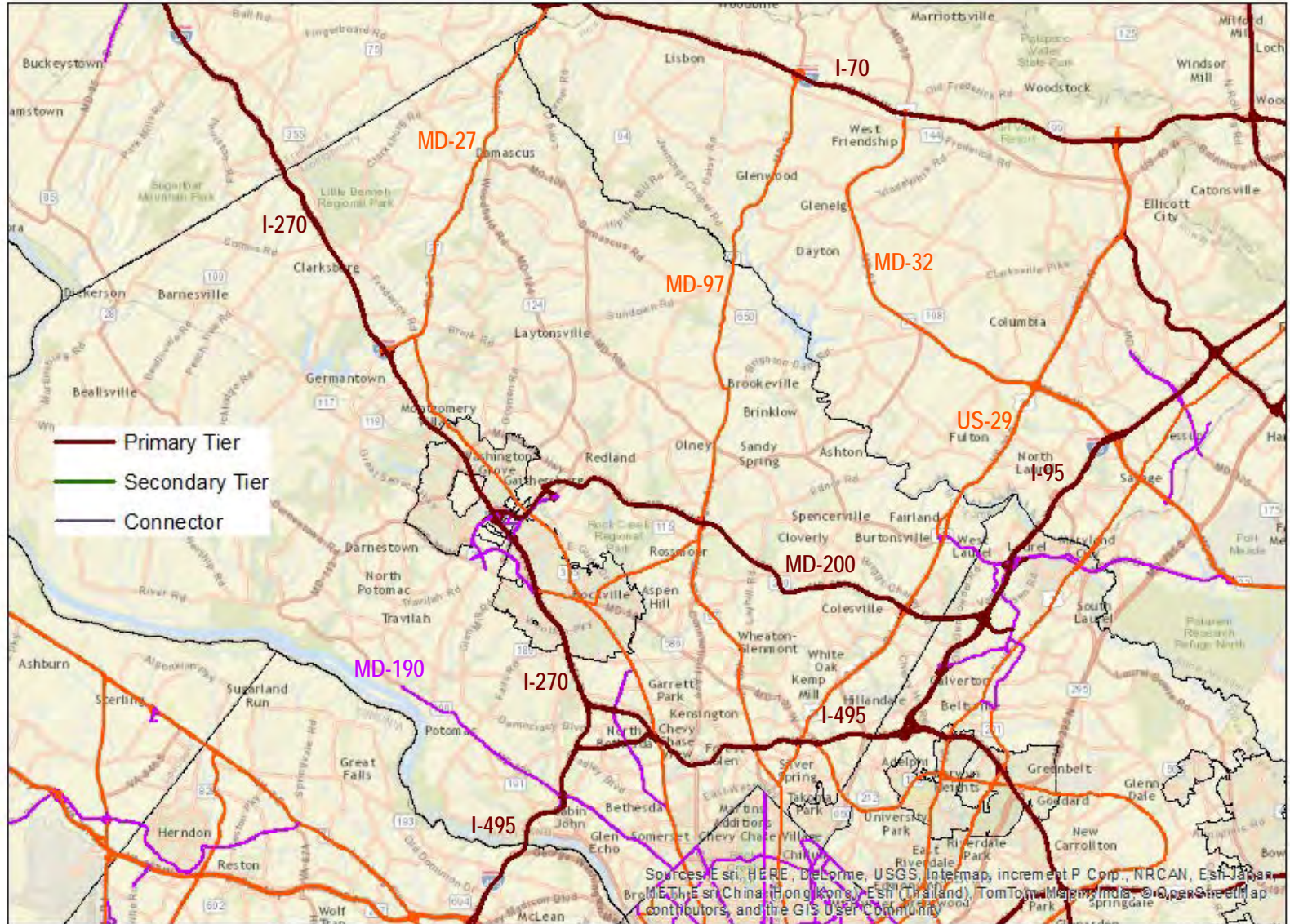


<b>Route Name</b>	<b>From</b>	<b>To</b>	<b>Tier</b>	<b>Reason</b>	<b>Comments</b>
I-70	Washington - Frederick County Line	Frederick - Carroll County Line	Primary	Interstate	
I-270	I-70	I-495	Primary	Interstate	
US-340	I-70	Frederick – Washington County Line	Primary	Part of Maryland Truck Route System	Continues on to West Virginia and Virginia
US-15	US-340 southwest of Frederick	Maryland – Pennsylvania Line	Primary from US-340 to MD- 26  Secondary from MD-26 to Maryland – Pennsylvania Line	Primary portion is part of Maryland Truck Route System  Secondary portion included because it provides good truck access from Frederick to Harrisburg	
MD-26	US-15	Monocacy Blvd	Connector	Provides access to commercial and industrial areas and connects to Monocacy Blvd	

<b>Route Name</b>	<b>From</b>	<b>To</b>	<b>Tier</b>	<b>Reason</b>	<b>Comments</b>
MD-75	W Baldwin Rd	Frederick – Carroll County Line	Connector	<p><u>South of I-70</u>: provides access to W. Baldwin Rd / Intercoastal Dr and on to Costco distribution center</p> <p><u>North of I-70</u>: provides access to cement plant in Carroll County</p>	
MD-85	I-70	Manor Woods Rd	Connector	Provides access to industrial areas	
MD-140	US-15	Frederick – Carroll County Line	Secondary	Provides truck access to various facilities in northern Frederick and Carroll Counties	
MD-355	I-70	New Technology Way	Connector	Provides access to commercial and industrial areas	Trucks are not encouraged beyond New Technology Way
W. Baldwin Rd & Intercoastal Dr	MD-75	Costco distribution center	Connector	Provides access to Costco distribution center	
Monocacy Blvd	MD-355	MD-26	Connector	Provides access to industrial areas in and around Frederick	Requested by Frederick County
Reichs Ford Rd	I-70	Ray Smith Rd	Connector	Provides access to commercial and industrial areas	Requested by Frederick County

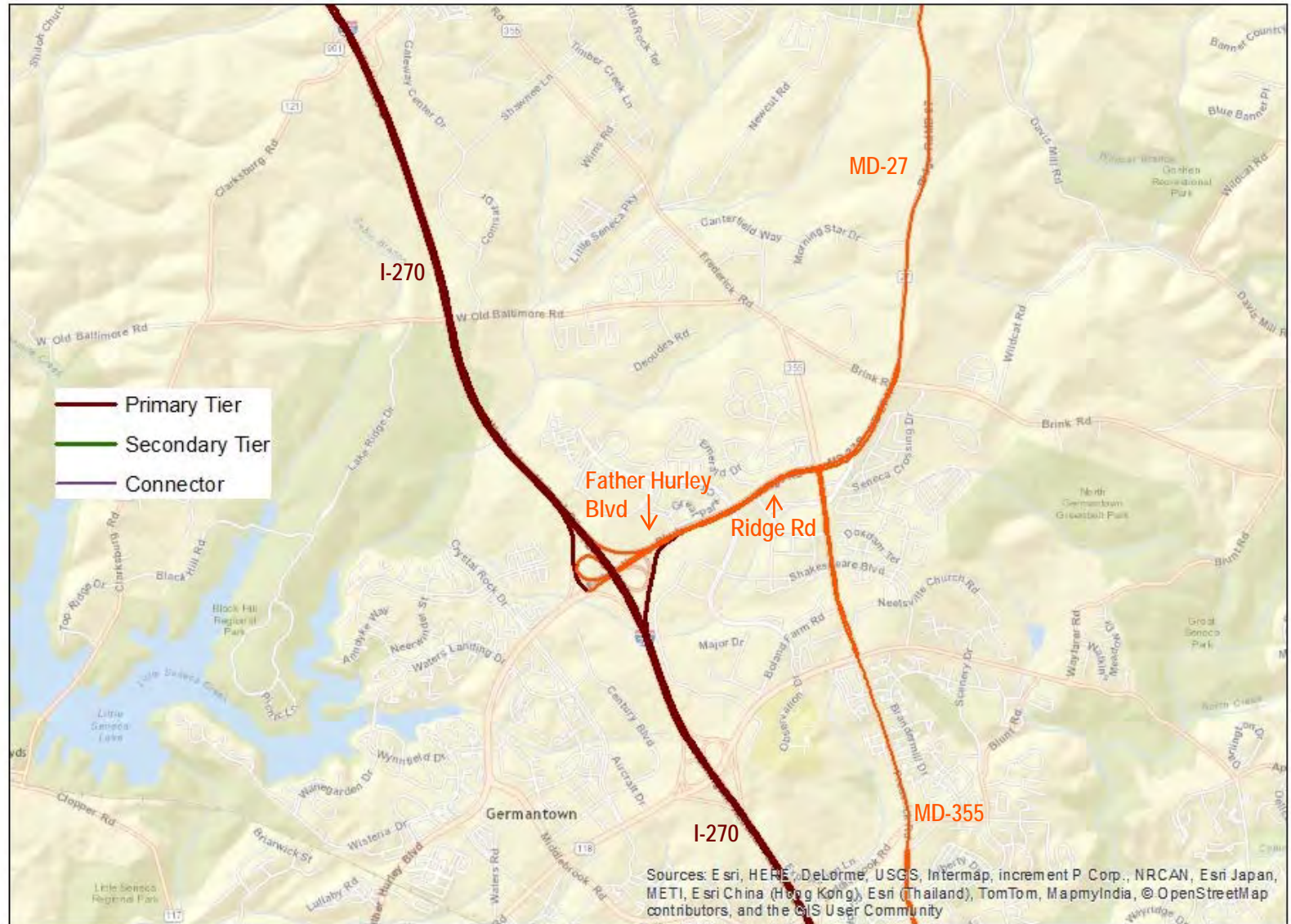
# DRAFT Regional Freight Network

## Montgomery County Area



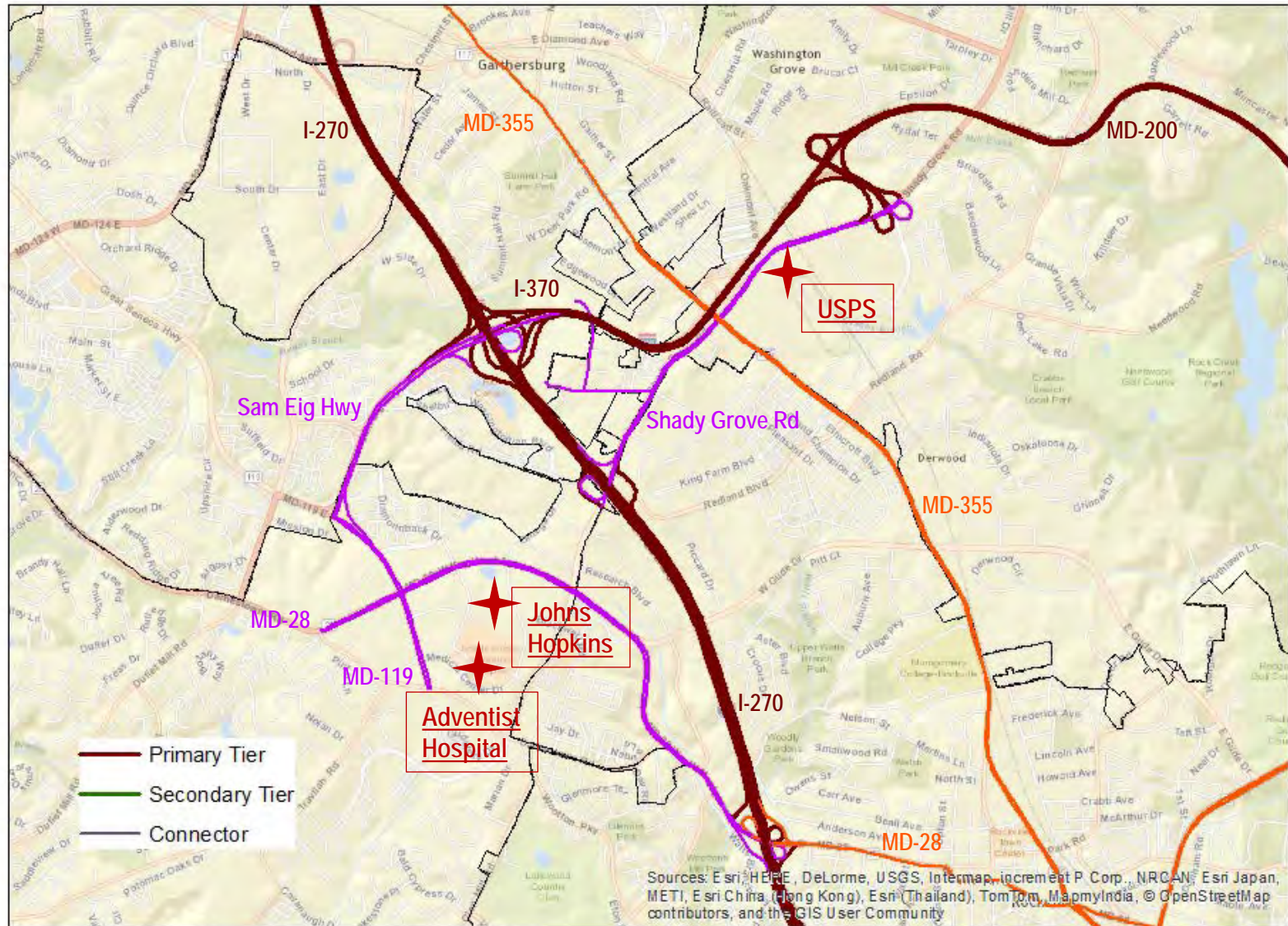
# DRAFT Regional Freight Network

## Montgomery County Area – Detail A



# DRAFT Regional Freight Network

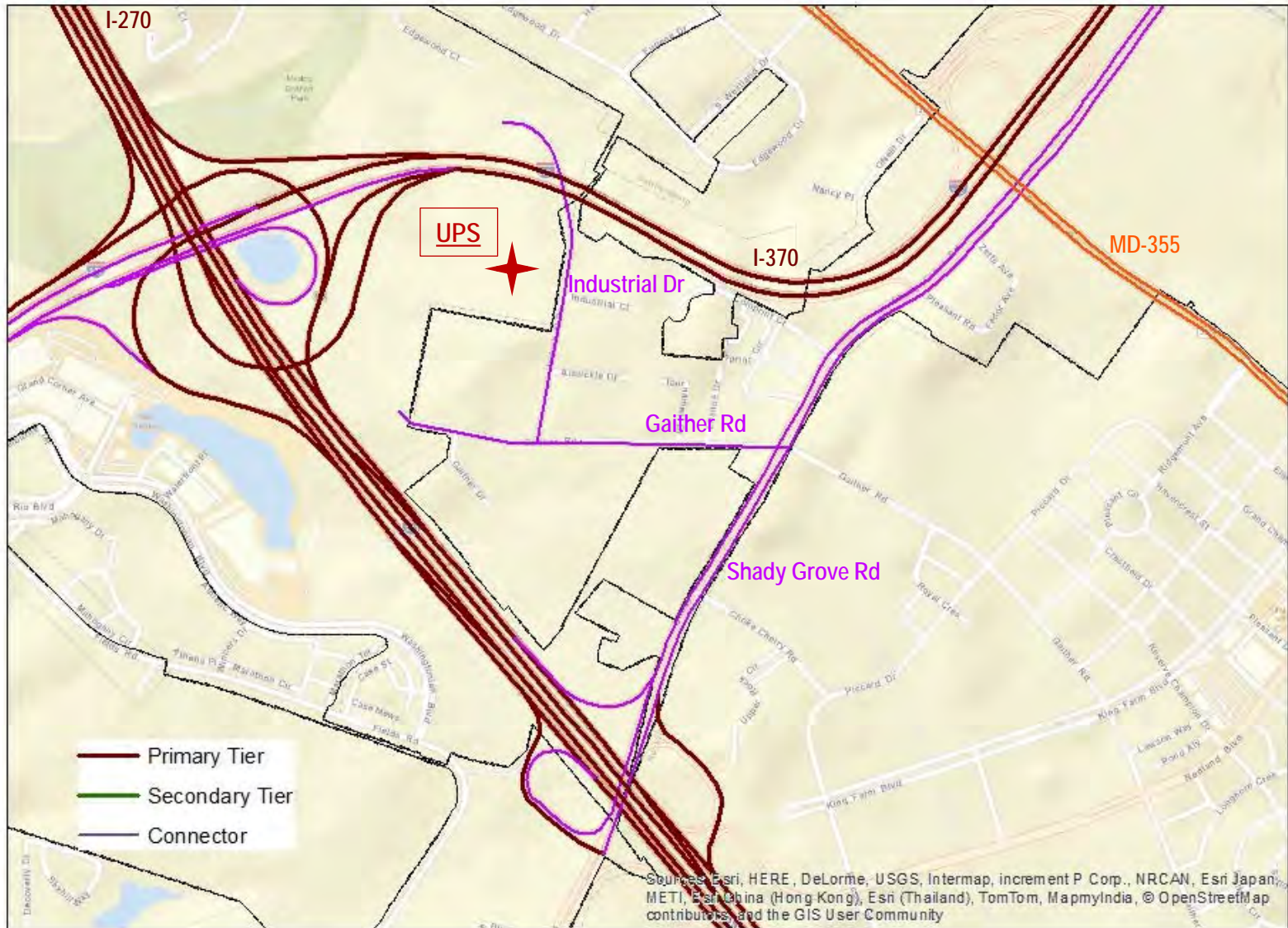
## Montgomery County Area – Detail B





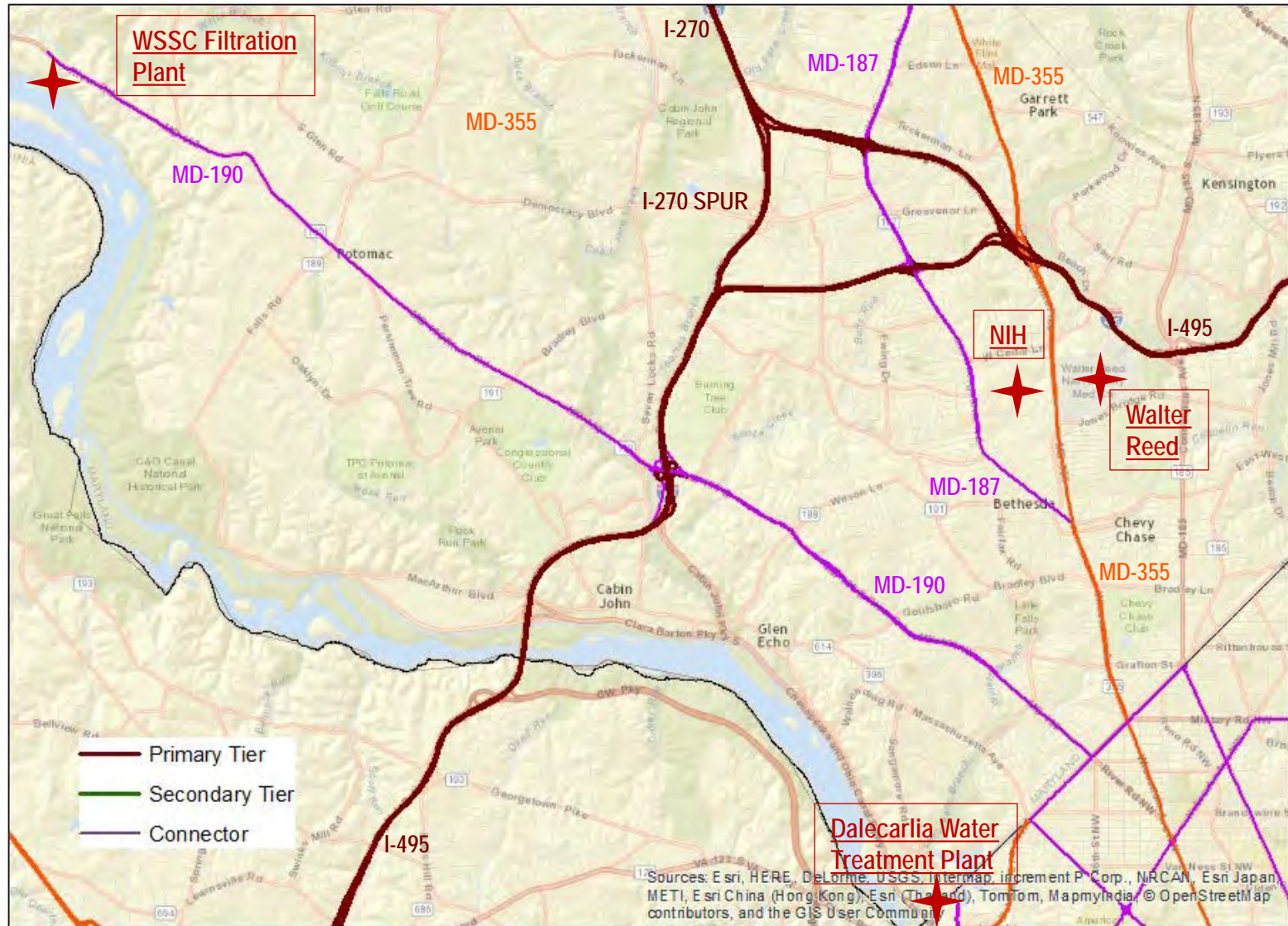
# DRAFT Regional Freight Network

## Montgomery County Area – Detail C



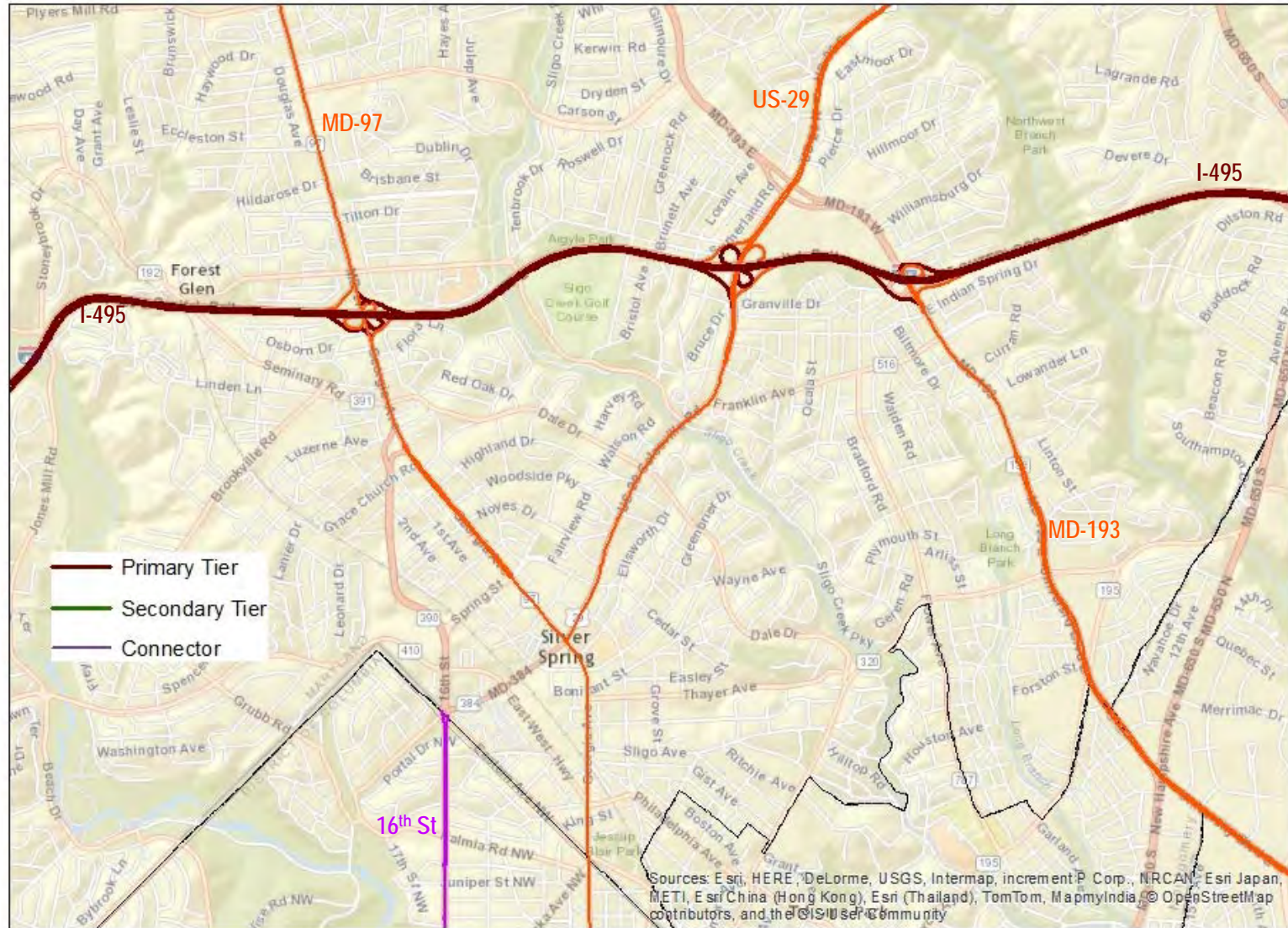
# DRAFT Regional Freight Network

## Montgomery County Area – Detail D



# DRAFT Regional Freight Network

## Montgomery County Area – Detail E



<b>Route Name</b>	<b>From</b>	<b>To</b>	<b>Tier</b>	<b>Reason</b>	<b>Comments</b>
I-270	I-70	I-495	Primary	Interstate	
I-270 SPUR	I-270	I-495	Primary	Interstate	
I-370	I-270	MD-200	Primary	Interstate	
I-495	Capital Beltway	Capital Beltway	Primary	Interstate	
US-29	DC – Maryland Line	Montgomery – Howard County Line	Secondary		Connects to DC Truck Route (Georgia Ave) – provides access to a variety of commercial areas in Silver Spring, White Oak, Burtonsville and into Columbia.
MD-27	MD-355	I-70	Secondary		Provides truck access to northern Montgomery County
MD-28	Darnestown Rd	MD-97	<u>Connector</u> from Darnestown Rd to I-270		<u>West of I-270</u> : provides access to Johns Hopkins and Adventist Hospital as well as adjacent commercial areas
			<u>Secondary</u> from I-270 to MD-97		<u>East of I-270</u> : provides access to commercial areas in central Montgomery County and connects to MD-97

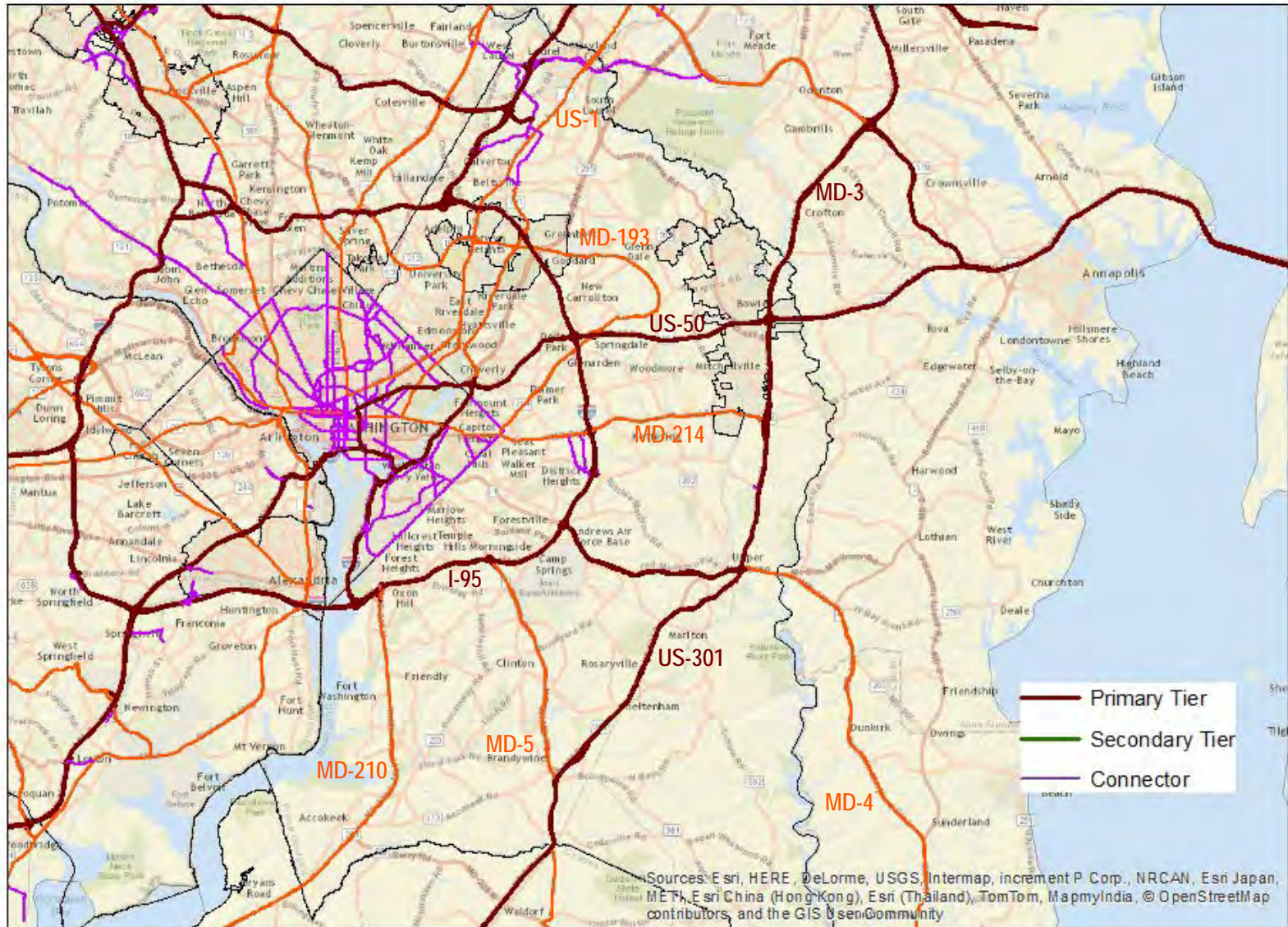
<b>Route Name</b>	<b>From</b>	<b>To</b>	<b>Tier</b>	<b>Reason</b>	<b>Comments</b>
MD-97	US-29	I-70	Secondary	Connects to DC Truck Route (Georgia Ave) through US-29 – provides access to commercial areas of Silver Spring, Wheaton, and on to I-70.	
MD-119 / Sam Eig Hwy	Darnestown Rd	Sam Eig Hwy	Connector	Provides access to Johns Hopkins and Adventist Hospital as well as related commercial areas.	
MD-187	MD-355 (north of I-495)	MD-355 (in Bethesda)	Connector	Provides truck access to commercial and medical facilities including the National Institutes of Health, Montgomery Mall, and Bethesda.	
MD-190	WSSC Water Filtration Plant	Maryland – DC Line	Connector	Provides access to the WSSC Water Filtration Plant and connected to DC Truck Route network at Western Ave. Also provides access from I-495 to the Dalecarlia Filtration Plant in DC.	

<b>Route Name</b>	<b>From</b>	<b>To</b>	<b>Tier</b>	<b>Reason</b>	<b>Comments</b>
MD-193	I-495	MD-450	Secondary	Provides truck access to commercial areas in Langley Park, College Park, Greenbelt, and Bowie	
MD-198	US-29	MD-32	Connector	Provides access from I-95 and US-29 to industrial areas along Sweitzer Ln – also provides truck access to Laurel and Fort Meade.	
MD-200	I-370	US-1	Primary	Provides a tolled expressway connection between I-270 and I-95 outside the Capital Beltway. Also provides east-west access to industrial areas in and around Beltsville	
Father Hurley Blvd – Ridge Rd	I-270	MD-27 / MD-355	Secondary	Provides truck access to commercial areas in Germantown and connects I-270 to MD-355 and MD-27	
Gaither Rd/ Industrial Rd	Shady Grove Rd	Terminus	Connector	Provides truck access to industrial park, including UPS distribution center	

<b>Route Name</b>	<b>From</b>	<b>To</b>	<b>Tier</b>	<b>Reason</b>	<b>Comments</b>
Shady Grove Rd	I-270	MD-200	Connector	Provides truck access to commercial and industrial areas, including USPS facility and UPS distribution center (via Gaither Rd and Industrial Dr)	

# DRAFT Regional Freight Network

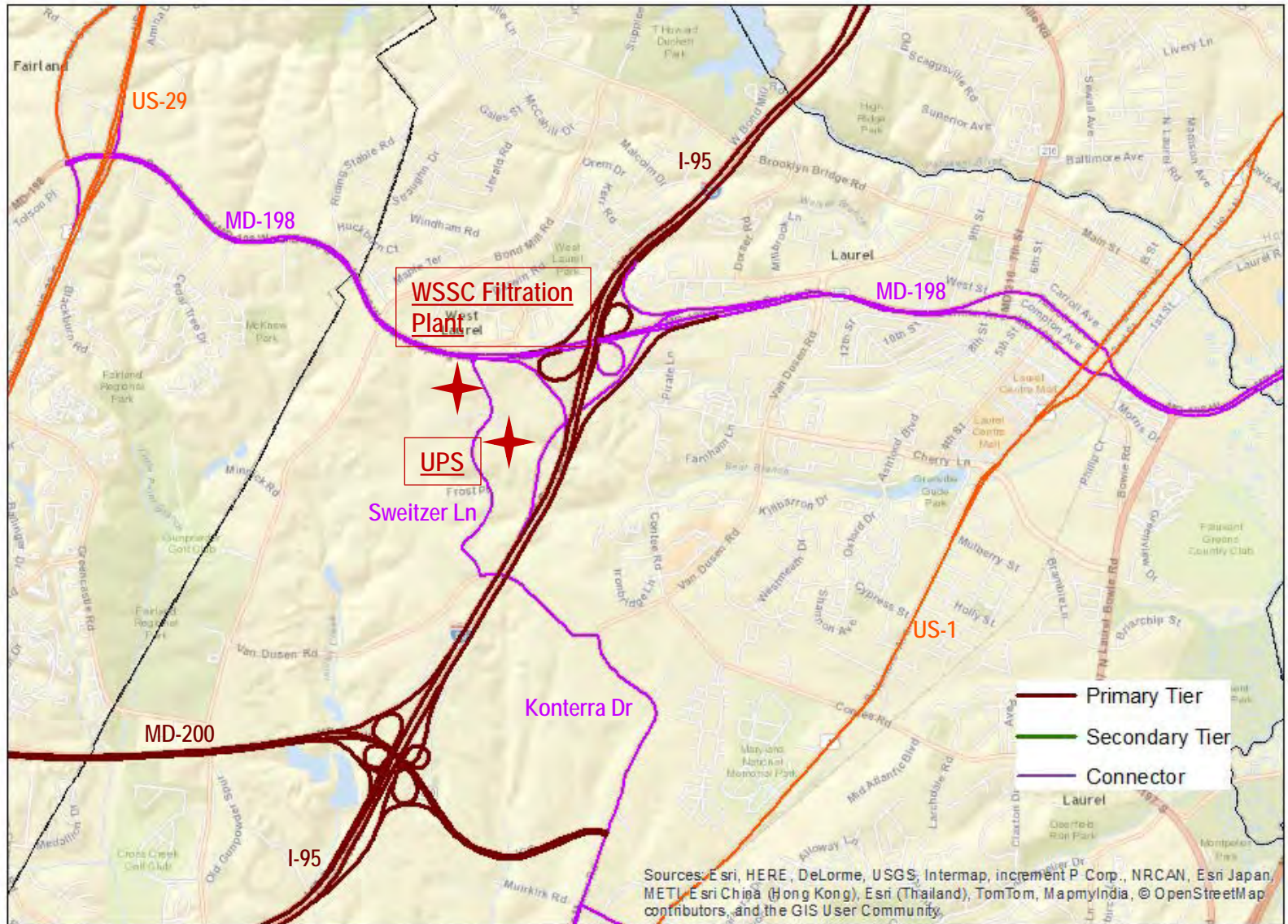
## Prince George's County Area





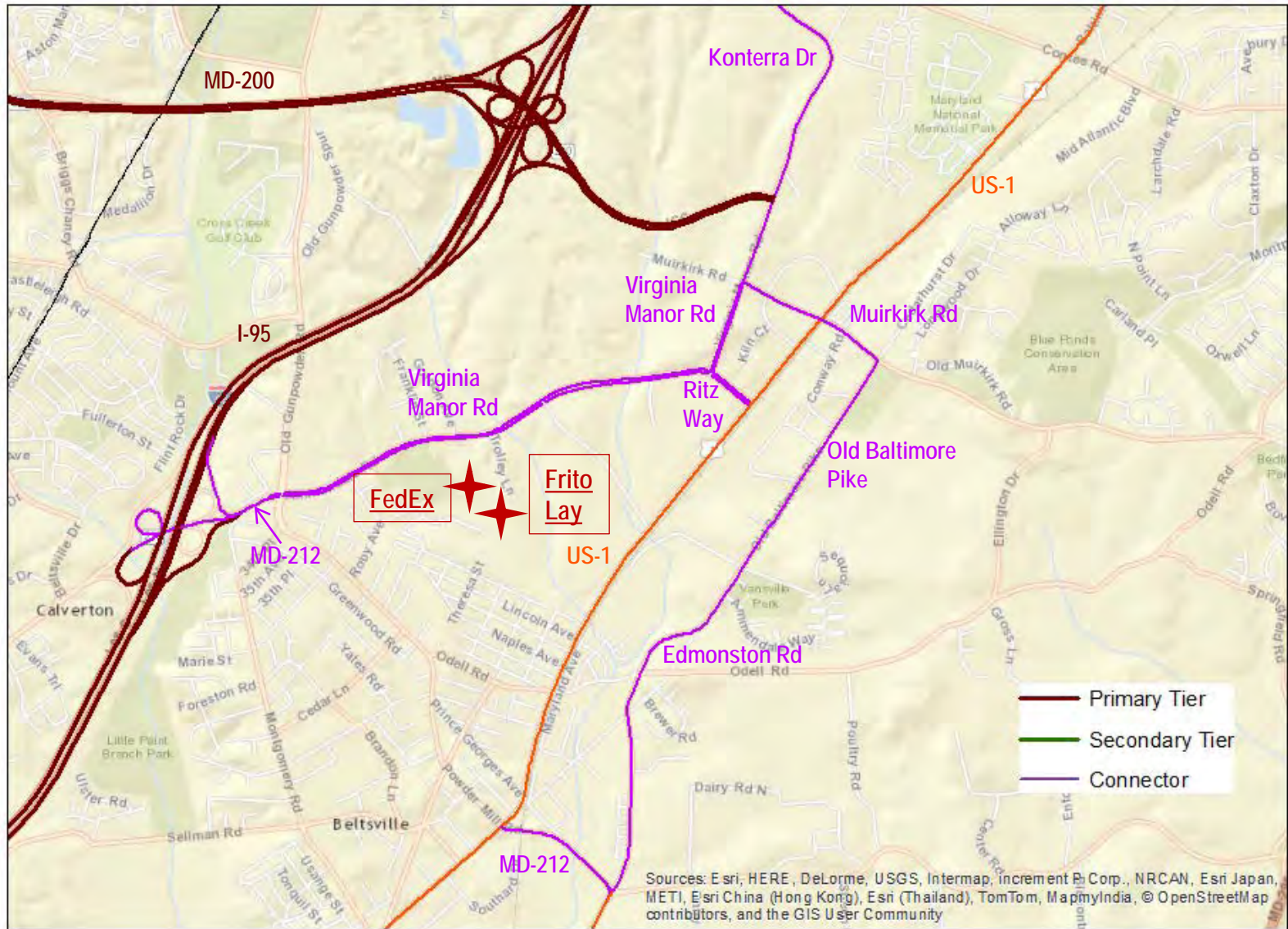
# DRAFT Regional Freight Network

## Prince George's County Area – Detail A



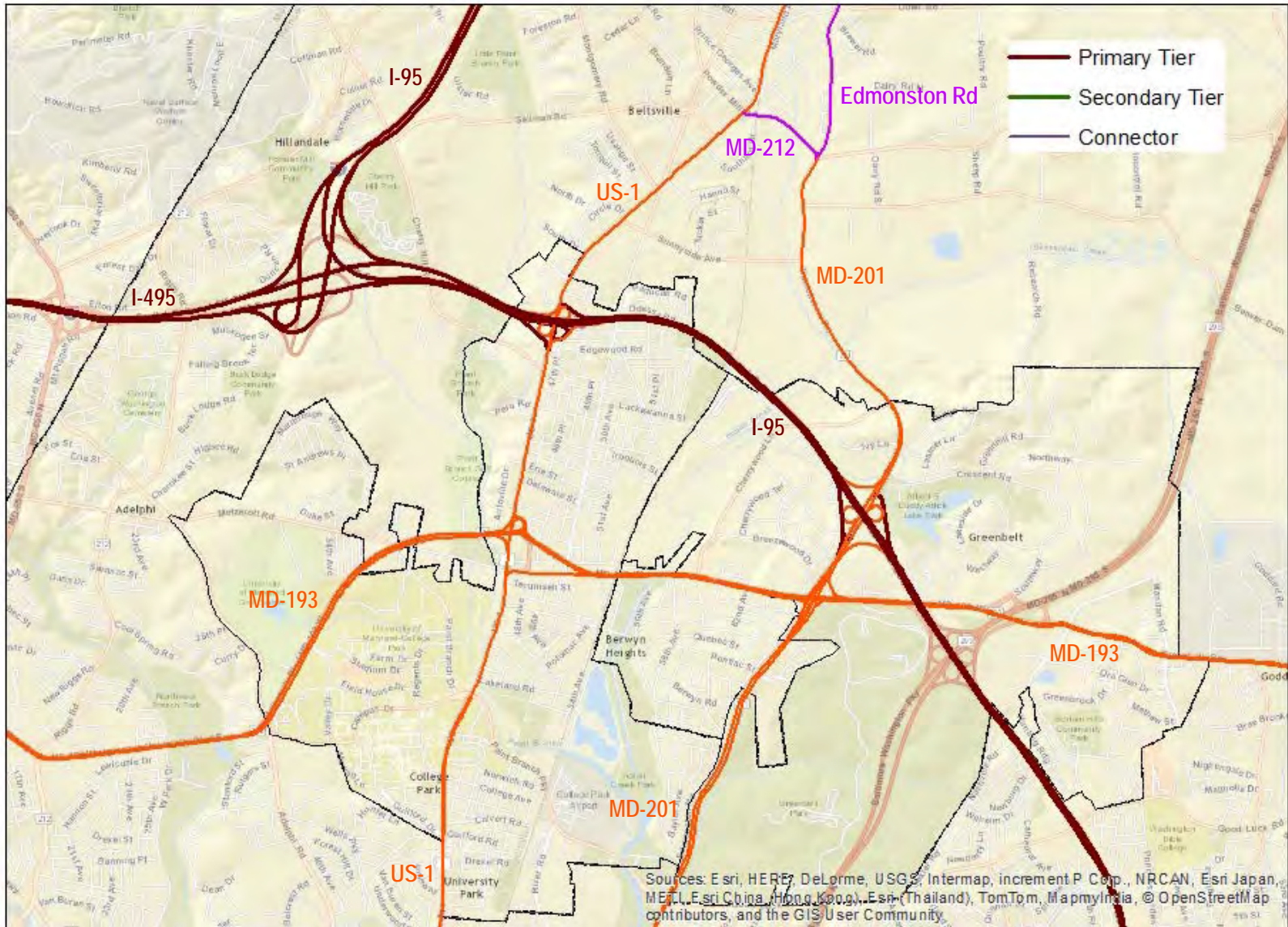
# DRAFT Regional Freight Network

## Prince George's County Area – Detail B



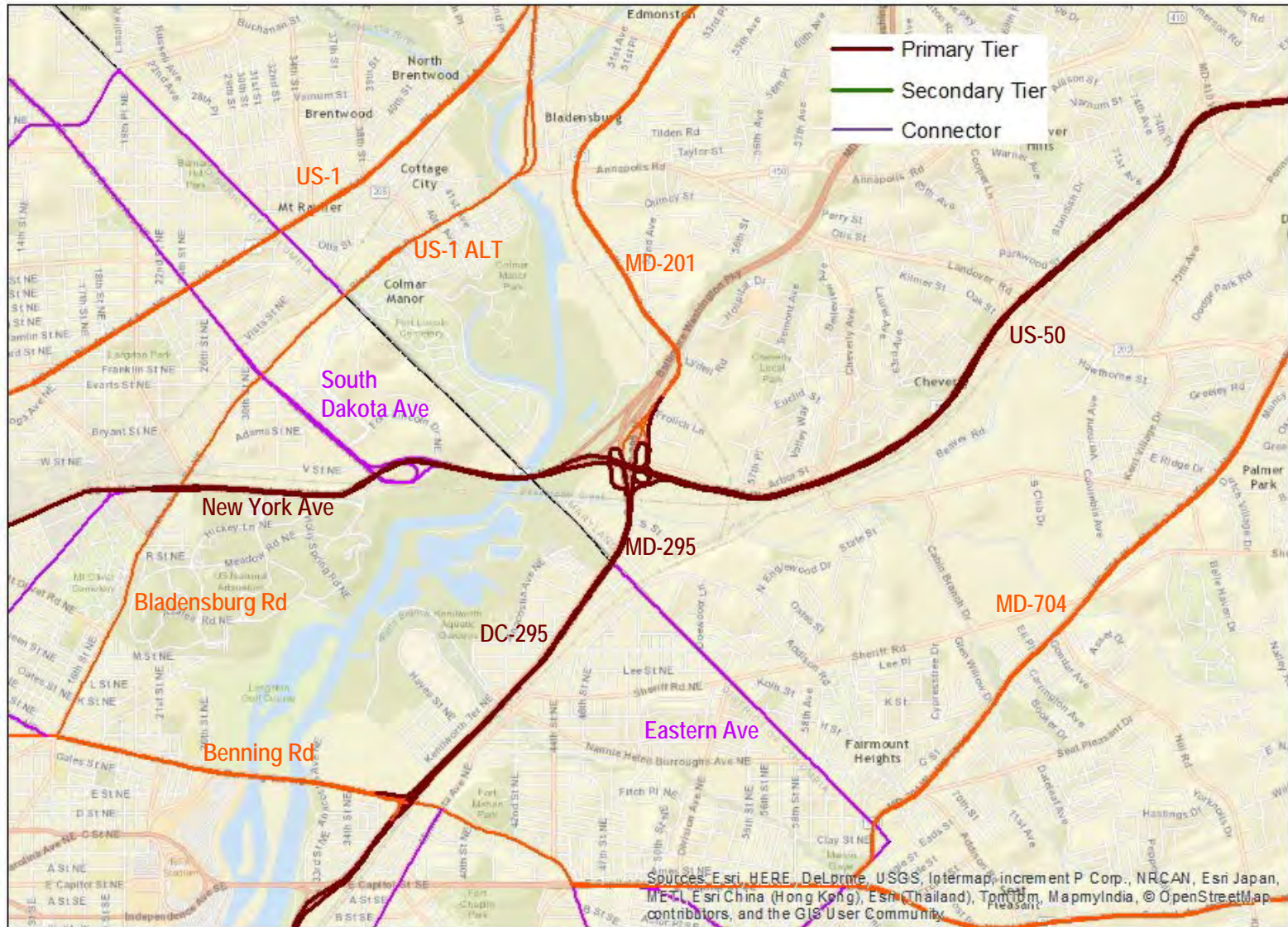
# DRAFT Regional Freight Network

## Prince George's County Area – Detail C



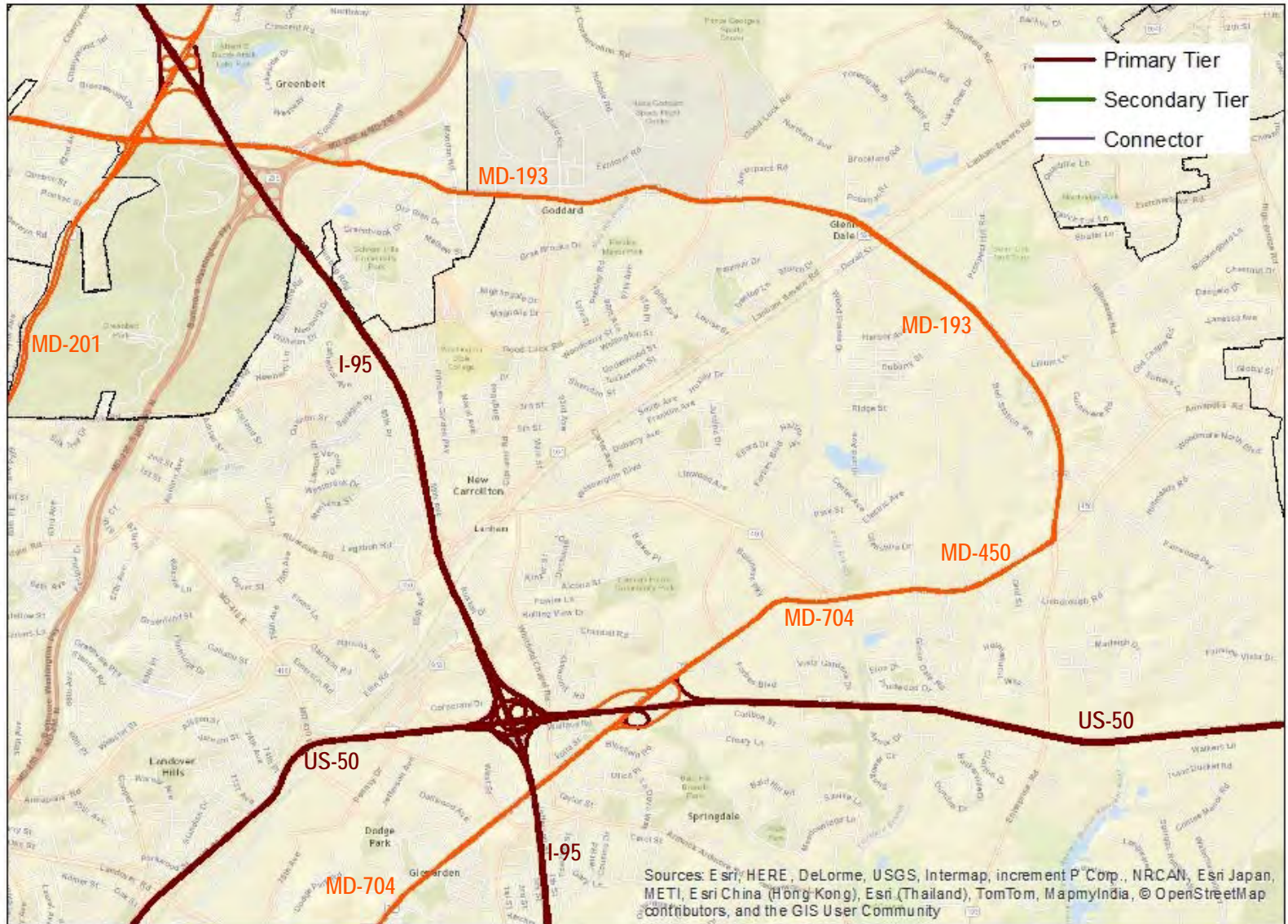
# DRAFT Regional Freight Network

## Prince George's County Area – Detail D



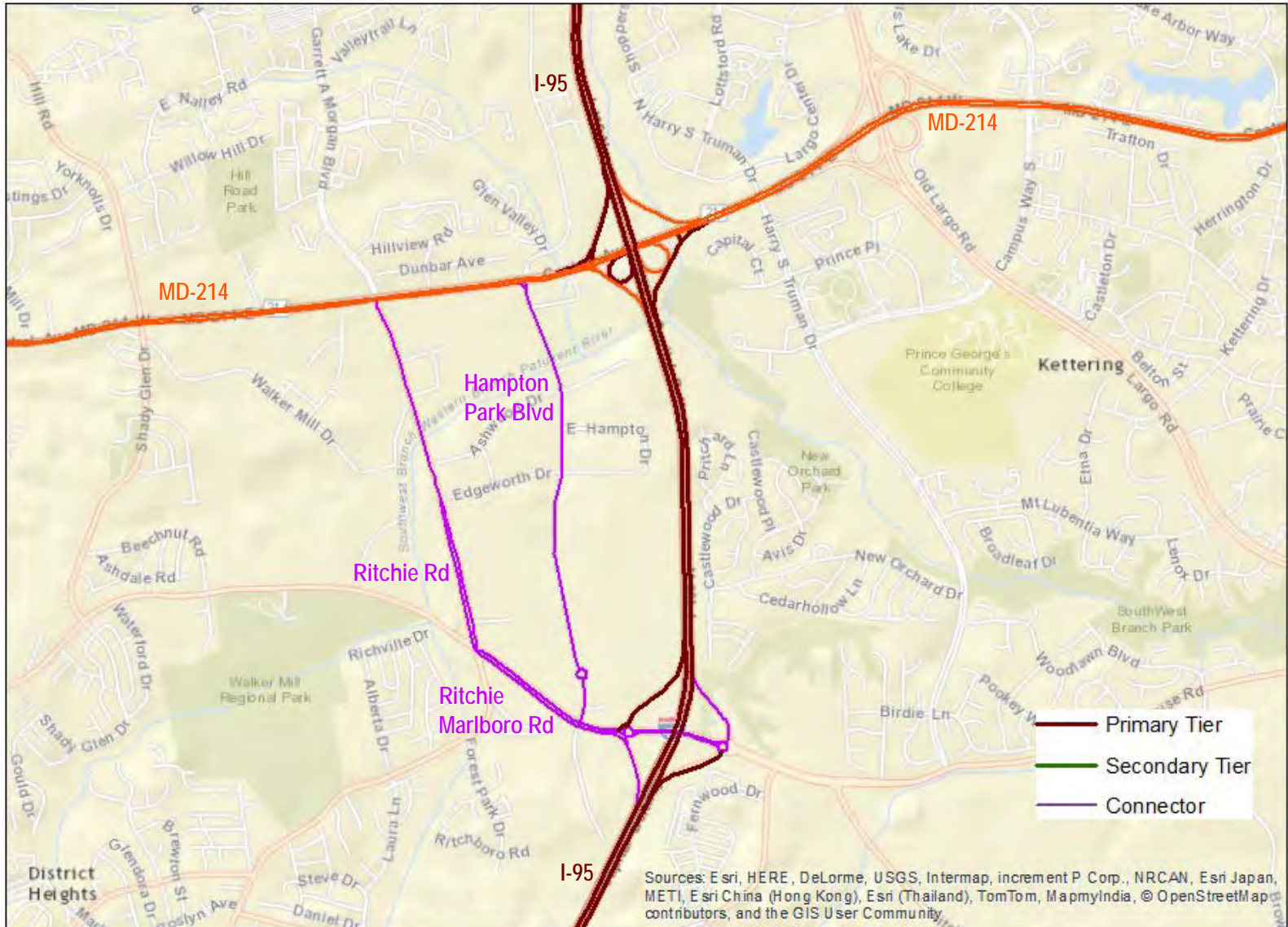
# DRAFT Regional Freight Network

## Prince George's County Area – Detail E



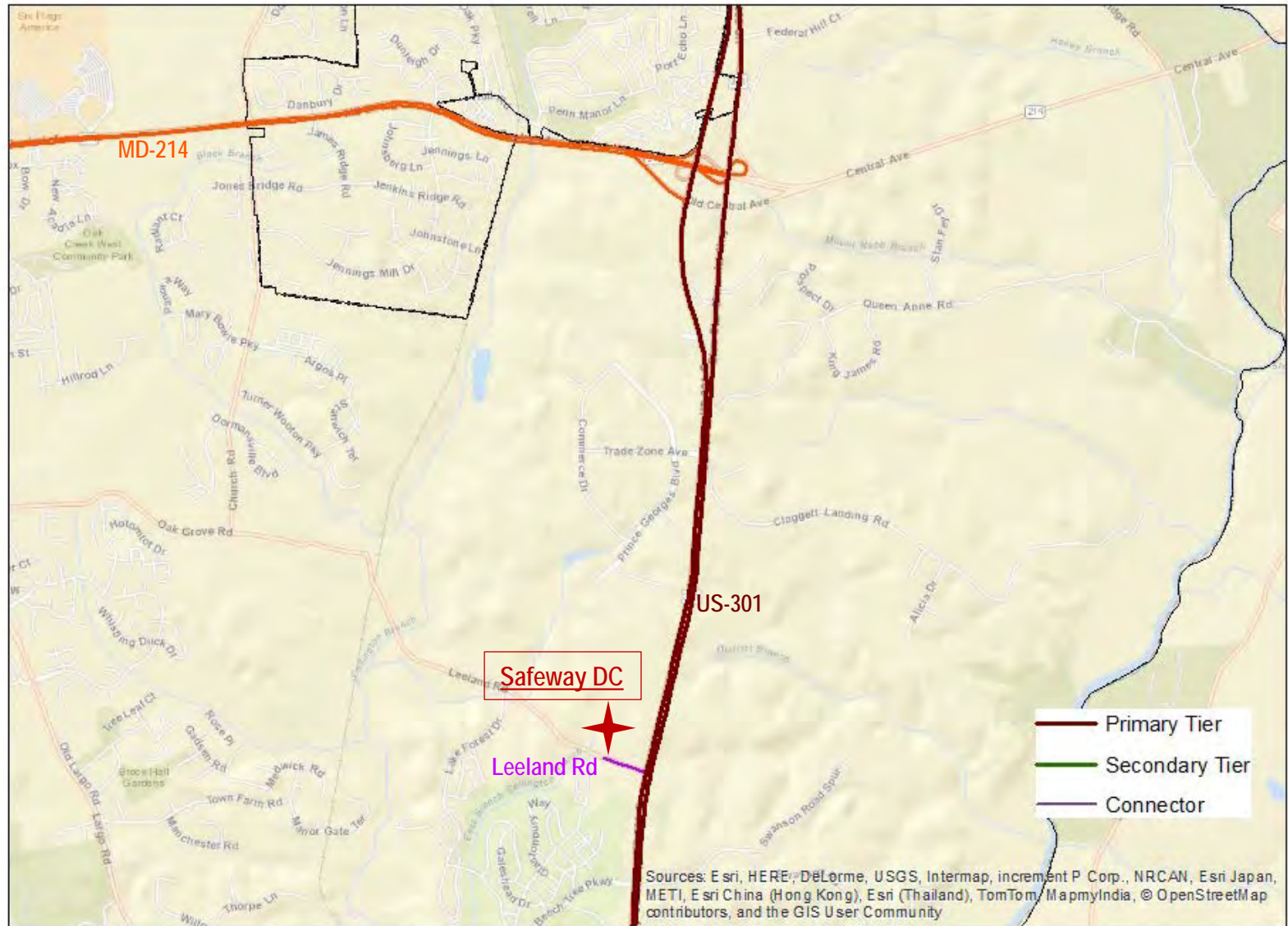
# DRAFT Regional Freight Network

## Prince George's County Area – Detail F



# DRAFT Regional Freight Network

## Prince George's County Area – Detail G



<b>Route Name</b>	<b>From</b>	<b>To</b>	<b>Tier</b>	<b>Reason</b>	<b>Comments</b>
I-95	Maryland-DC Line (over the Potomac River)	Prince George's – Howard County Line	Primary	Interstate	
I-295	I-95 / I-495	Maryland – DC Line	Primary	Interstate	
I-495	Capital Beltway	Capital Beltway	Primary	Interstate	
US-1	Maryland – DC Line	Prince George's – Howard County Line	Secondary		Provides truck access to a variety of commercial and industrial areas along the entire length of the corridor. Connects to DC Truck Route (Rhode Island Avenue).
US-1 ALT	DC – Maryland Line	US-1	Secondary		Connects to DC Truck Route (Bladensburg Rd) – provides access to commercial and industrial areas in and around Hyattsville.



<b>Route Name</b>	<b>From</b>	<b>To</b>	<b>Tier</b>	<b>Reason</b>	<b>Comments</b>
US-50	Maryland – DC Line	Prince George's – Anne Arundel County Line	Primary	Connects I-95 to New York Avenue and (via a short section of MD-295) to DC-295 – both of which are important truck facilities in DC. Also provides truck connection between the National Capital Region and the Eastern Shore of Maryland.	Maryland Truck Route
US-301	Maryland – Virginia Line	Prince George's – Anne Arundel County Line	Primary	Provides a truck connection between I-95 north of Richmond and the Wilmington / Philadelphia / New York region without going through Washington DC and Baltimore. Provides truck (via Leeland Rd) to the Safeway distribution center north of Upper Marlboro.	Maryland Truck Route
MD-3	US-50	Prince George's – Anne Arundel County Line	Primary	Connects the US-50 / US-301 freight corridors with I-97 and Baltimore.	Maryland Truck Route

<b>Route Name</b>	<b>From</b>	<b>To</b>	<b>Tier</b>	<b>Reason</b>	<b>Comments</b>
MD-4	I-95 / I-495	Prince George’s – Anne Arundel County Line	<p><u>Primary:</u> from I-95 / I-495 to US-301</p> <p><u>Secondary:</u> from US-301 to Prince Frederick</p>	Provides truck access between I-95 and US-301 and on to commercial areas of Calvert County.	<p>Maryland Truck Route between I-95 / I-495 and US-301.</p> <p>No trucks between I-95 / I-495 and the Maryland – DC Line</p>
MD-5	I-95 / I-495	MD-235	Secondary	Provides truck connection between Southern Maryland and the National Capital Region. Connects Southern Maryland to the National Freight Network	
MD-193	I-495	MD-450	Secondary	Provides truck access to commercial areas in Langley Park, College Park, Greenbelt, and Bowie	
MD-198	US-29	MD-32	Connector	Provides access from I-95 and US-29 to industrial areas along Sweitzer Ln – also provides truck access to Laurel and Fort Meade.	

<b>Route Name</b>	<b>From</b>	<b>To</b>	<b>Tier</b>	<b>Reason</b>	<b>Comments</b>
MD-200	I-370	US-1	Primary	Provides a tolled expressway connection between I-270 and I-95 outside the Capital Beltway. Also provides east-west access to industrial areas in and around Beltsville	
MD-201	MD-295	MD-212	Secondary	Provides truck access to commercial and industrial areas of Greenbelt, Bladensburg, Cheverly, and Hyattsville – including the Pepsi bottling plant in Cheverly and the Tuxedo Road industrial area in Hyattsville.	
MD-210	I-95 / I-495	Naval Support Facility Indian Head	Secondary	Provides truck access to Indian Head from I-95 / I-495	

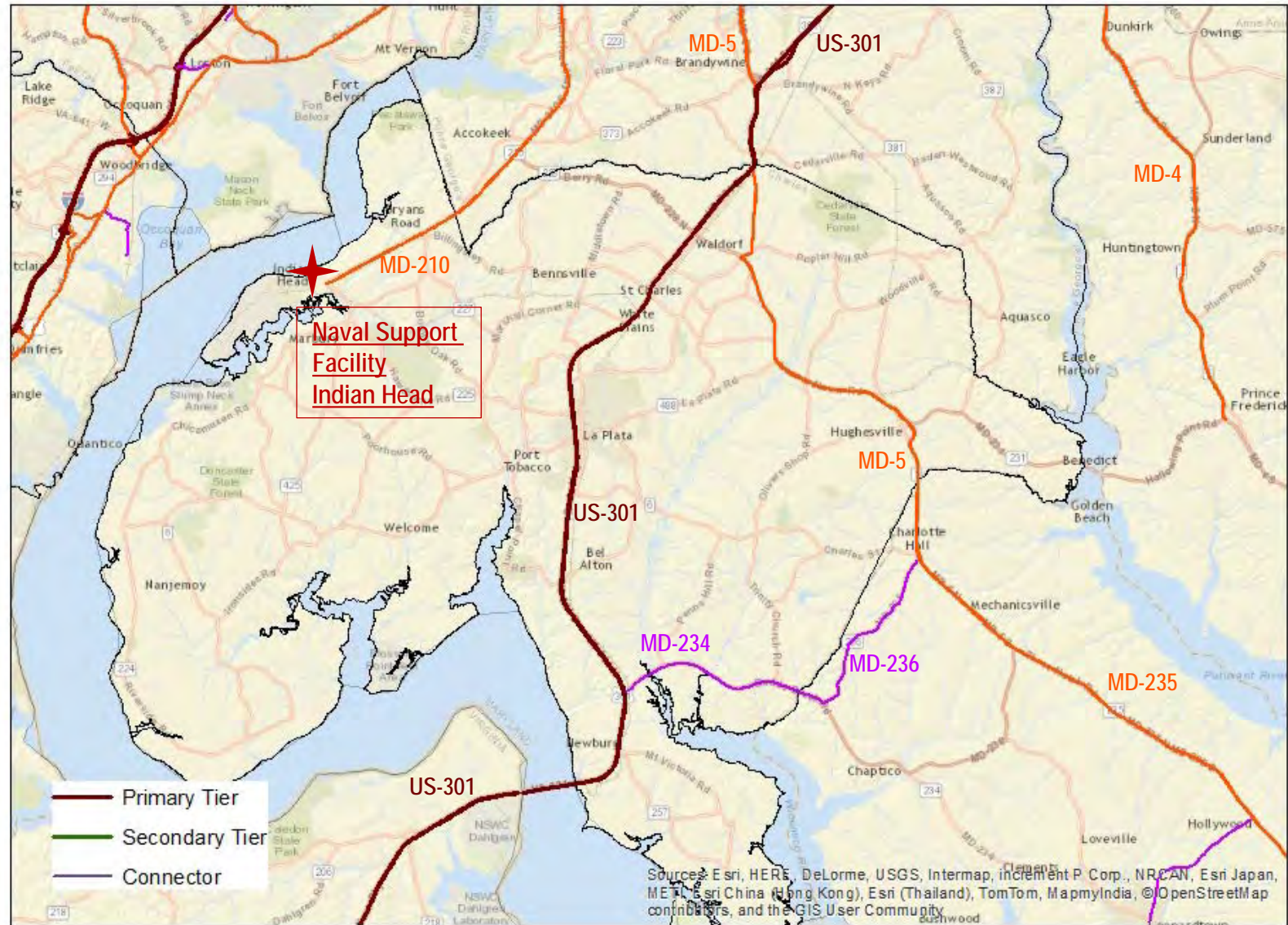
<b>Route Name</b>	<b>From</b>	<b>To</b>	<b>Tier</b>	<b>Reason</b>	<b>Comments</b>
MD-212	US-1	MD-201	Connector	Connects the industrial areas in Beltsville (east of the CSX Capital Subdivision) to US-1.	Note: the portion of MD-212 (Powder Mill Rd) between Ammendale Rd and US-1 is “not” part of the Draft Regional Freight Network.
MD-212 – Ammendale Rd – Virginia Manor Rd	I-95	Konterra Dr – Muirkirk Rd	Connector	Provides truck access between I-95 and the commercial and industrial areas along Virginia Manor Rd and Konterra Dr., including the FedEx and Frito Lay facilities along Trolley Lane	Note: the portion of MD-212 (Powder Mill Rd) between Ammendale Rd and US-1 is “not” part of the Draft Regional Freight Network.
MD-214	Maryland – DC Line	US-301	Secondary	Provides truck connection to Central Ave (DC Truck Route) – provides truck access to and from the industrial areas off Ritchie Rd and Hampton Park Blvd.	

<b>Route Name</b>	<b>From</b>	<b>To</b>	<b>Tier</b>	<b>Reason</b>	<b>Comments</b>
MD-295	Maryland – DC Line	US-50 / MD-201	Primary	Provides critical truck connection between US-50 and DC-295 (DC Truck Route) and for trucks leaving DC to reach US-50 and I-95 / I-495	
MD-450	MD-193	MD-704	Secondary	Links MD-193 to MD-704	
MD-704	Maryland – DC Line	MD-450	Secondary	Connects DC Truck Route system (Central Ave via 63 <sup>rd</sup> St) to commercial areas in central Prince George's County and to US-50	
Edmonston Rd – Old Baltimore Pike	MD-201 / MD-212	Muirkirk Rd	Connector	Provides truck access to industrial areas in and around Beltsville	
Leeland Rd	US-301	Safeway distribution center entrance	Connector	Provides truck access to and from major Safeway distribution center	Leeland Rd east of the Safeway distribution center is not recommended for trucks

<b>Route Name</b>	<b>From</b>	<b>To</b>	<b>Tier</b>	<b>Reason</b>	<b>Comments</b>
Muirkirk Rd	Virginia Manor Rd / Konterra Dr	Old Baltimore Pike	Connector	Provides truck access from MD-200 and I-95 to Beltsville industrial areas (via Konterra Dr and Virginia Manor Rd / MD-212	Bridge over CSX on Muirkirk Rd is weight restricted. 56,000 lbs for single unit trucks and 54,000 lbs for combinations
Ritz Way	Virginia Manor Rd	US-1	Connector	Provides access to US-1 in Beltsville from MD-200 via Konterra Dr and Virginia Manor Rd and from I-95 via MD-212 and Virginia Manor Rd	
Sweitzer Ln – Konterra Dr	MD-198	Virginia Manor Rd / Muirkirk Rd	Connector	Provides truck access to industrial areas including a major UPS facility and a WSSC Filtration Plant	

# DRAFT Regional Freight Network

## Charles County Area



<b>Route Name</b>	<b>From</b>	<b>To</b>	<b>Tier</b>	<b>Reason</b>	<b>Comments</b>
US-301	Maryland – Virginia Line	Prince George’s – Anne Arundel County Line	Primary	Provides a truck connection between I-95 north of Richmond and the Wilmington / Philadelphia / New York region without going through Washington DC and Baltimore. Provides truck access to commercial and industrial areas of central Charles County.	Maryland Truck Route
MD-5	I-95 / I-495	MD-235	Secondary	Provides truck connection between Southern Maryland and the National Capital Region. Connects Southern Maryland to the National Freight Network	
MD-210	I-95 / I-495	Naval Support Facility Indian Head	Secondary	Provides truck access to Indian Head from I-95 / I-495	
MD-234	US-301	MD-236	Connector	Provides a connection (in combination with MD-236, MD-5, and MD-235) between industrial and commercial areas of St. Mary’s county and US-301.	