



Tara H. Jackson
Acting County Executive



Michael D. Johnson, P.E.
Director

**Metropolitan Washington Council of Governments
Bicycle and Pedestrian Subcommittee of the
TPB Technical Committee**

**Safe Streets and Roads for All
Proud to Pave the Way
Multi-Modal Projects on the High Injury Network**

January 21, 2025



Tara H. Jackson
Acting County Executive

OVERVIEW



Michael D. Johnson, P.E.
Director

- SS4A Grant
- 7 sub-projects
- Proposed Improvements
- Q&A Session



Tara H. Jackson
Acting County Executive

SS4A



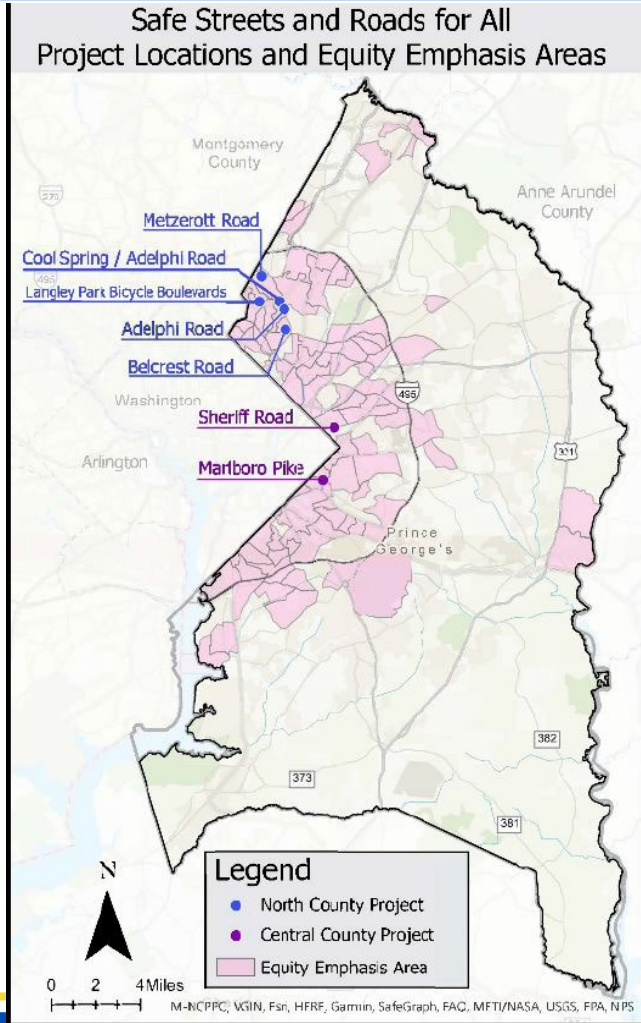
Michael D. Johnson, P.E.
Director

Safe Streets and Roads for All Grant (SS4A)

- Location: Countywide
- Project Locations In:
Langley Park, College Park, Hyattsville, Fairmont Heights, Coral Hills
- Project Phase:
15%-100% Design
- Project Group Cost:
\$30.6M
- Award Amount:
\$21.2M

Since 2023 DPW&T has Processed the Grant Agreement as a Direct Recipient. We have also received ROW Certification and NEPA Certification on a sub-project. Marlboro Pike Phase 2 was awarded for construction in 2024.

[>>>>Vision Zero Webpage](#)



The graphic features a blue background with a winding road path. It includes several circular images: a carpool lane with a car and a cyclist, a school bus, a pedestrian, and a group of children on bicycles. A large gold ribbon seal in the center reads "USDOT Safe Streets and Roads for All Grant Program RECIPIENT". Text on the right says "Proud to Pave the Way for Multimodal Safety" and "Improvements along the Prince George's County, MD, High Injury Network". Logos for the Department of Transportation, United States of America, and Vision Zero are at the bottom. The Vision Zero logo includes the text "VISIONZERO prince george's SAFE STREETS FOR EVERYONE." and the names of Angela D. Alsobrooks, County Executive, and Michael D. Johnson, P.E., Director.



Tara H. Jackson
Acting County Executive

SS4A



Michael D. Johnson, P.E.
Director

Direct Recipient from FHWA

- Helpful guidance and direction from FHWA
- Confidence
- Flexibility
- Delivery





Tara H. Jackson
Acting County Executive



Michael D. Johnson, P.E.
Director

Marlboro Pk., Pedestrian Safety Improvements Ph. 2, CIP Project

Proud to Pave the Way
Multi-Modal Projects on the High Injury Network
Sub-project #1 of 7

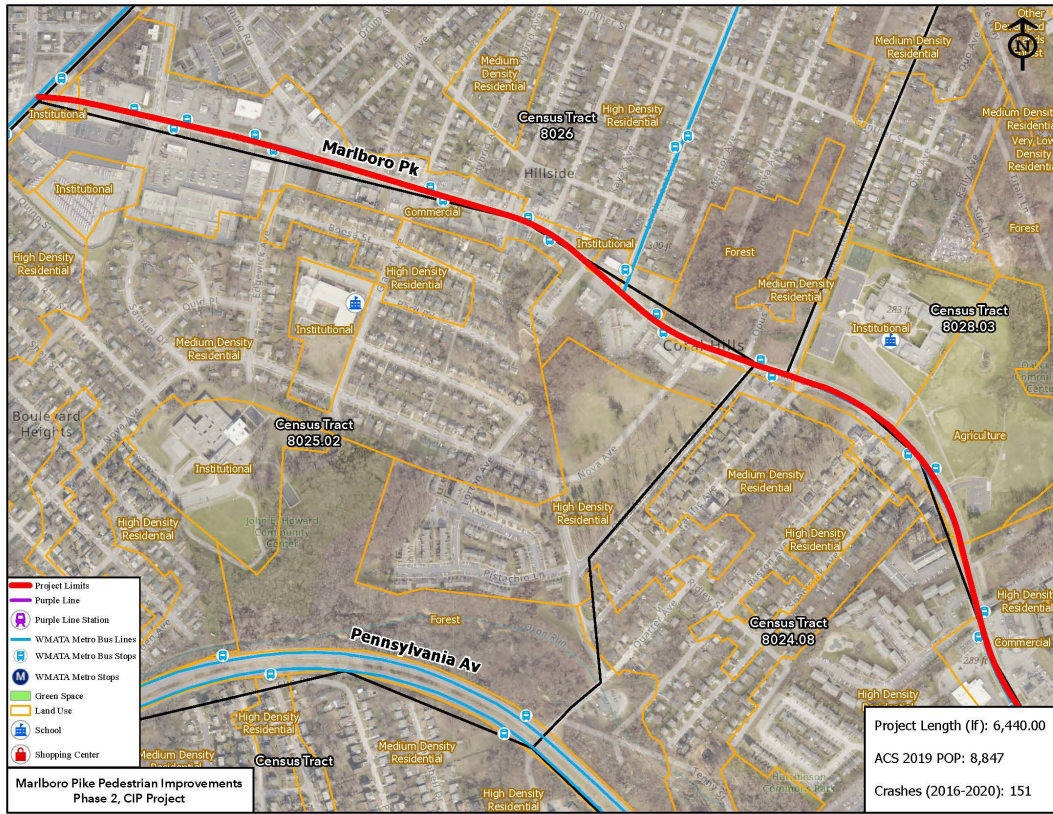


Tara H. Jackson
Acting County Executive

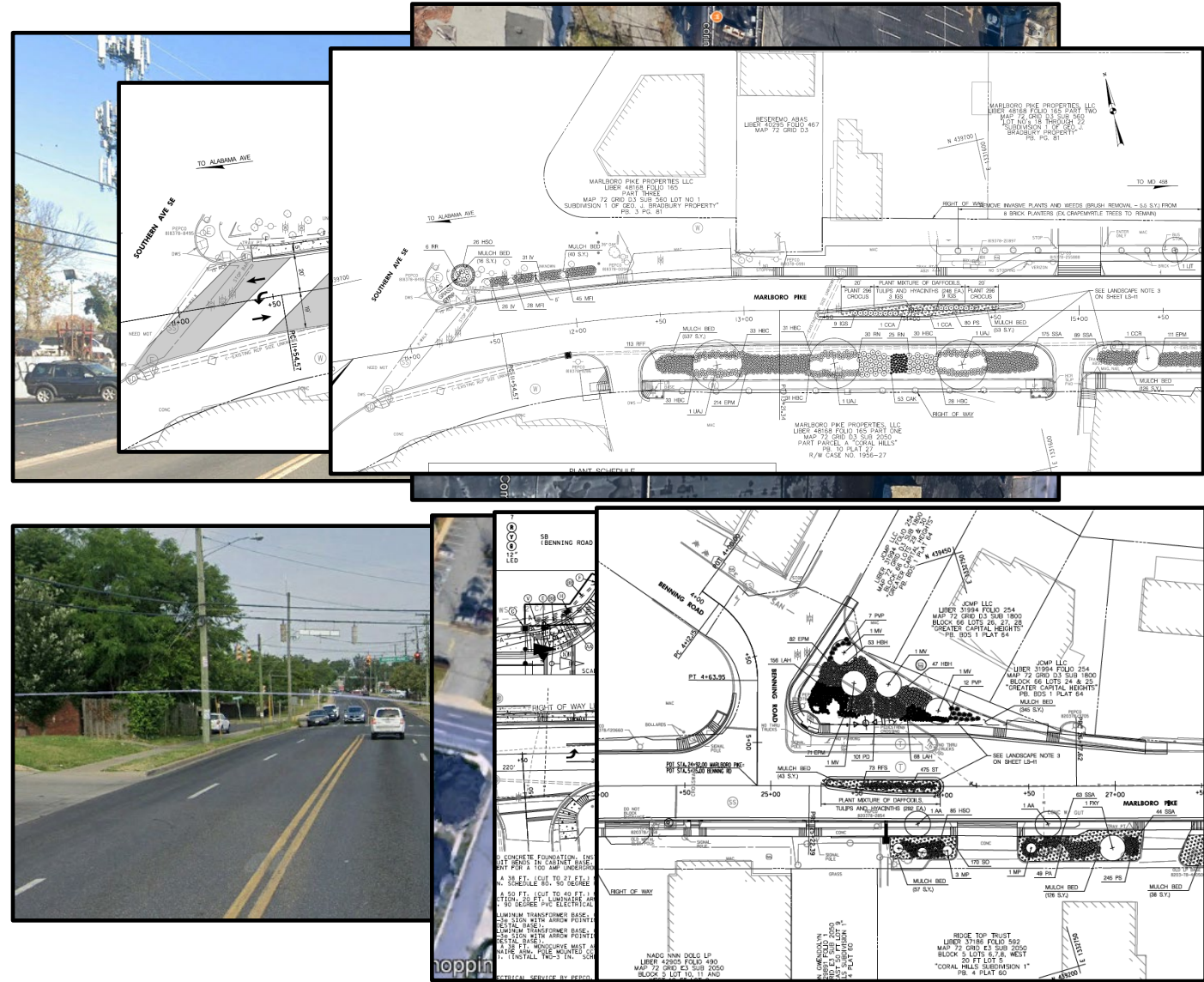
PROJECT LIMITS



Michael D. Johnson, P.E.
Director



- 1.2 Mi. Road Diet with new landscaped median
- 5 Signal Reconstructs /2 RRFBs
- 2 SWM facilities
- 50 new LED lights
- ADA Compliant





Tara H. Jackson
Acting County Executive



Michael D. Johnson, P.E.
Director

Langley Park Pedestrian-Bike Access Project

Proud to Pave the Way
Multi-Modal Projects on the High Injury Network
Sub-project #2 of 7

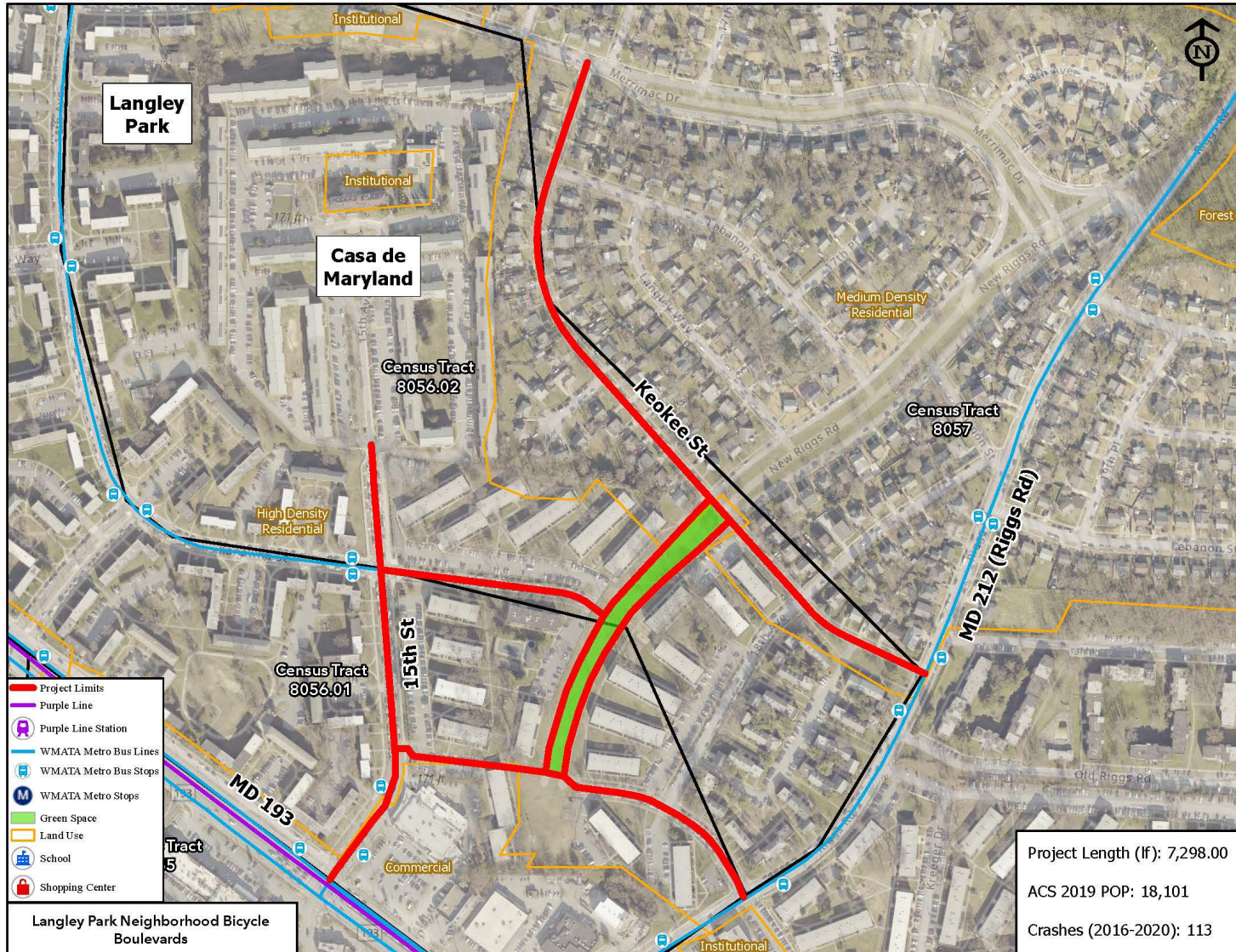


Tara H. Jackson
Acting County Executive

PROJECT LIMITS



Michael D. Johnson, P.E.
Director



- 1,100 LF 10' path
- 2,500 LF new 5' sidewalk
- 30 crosswalk upgrades
- 60 ADA ramp upgrades
- 3 Stormwater Management facilities



Tara H. Jackson
Acting County Executive

PROJECT PHOTOS



Michael D. Johnson, P.E.
Director



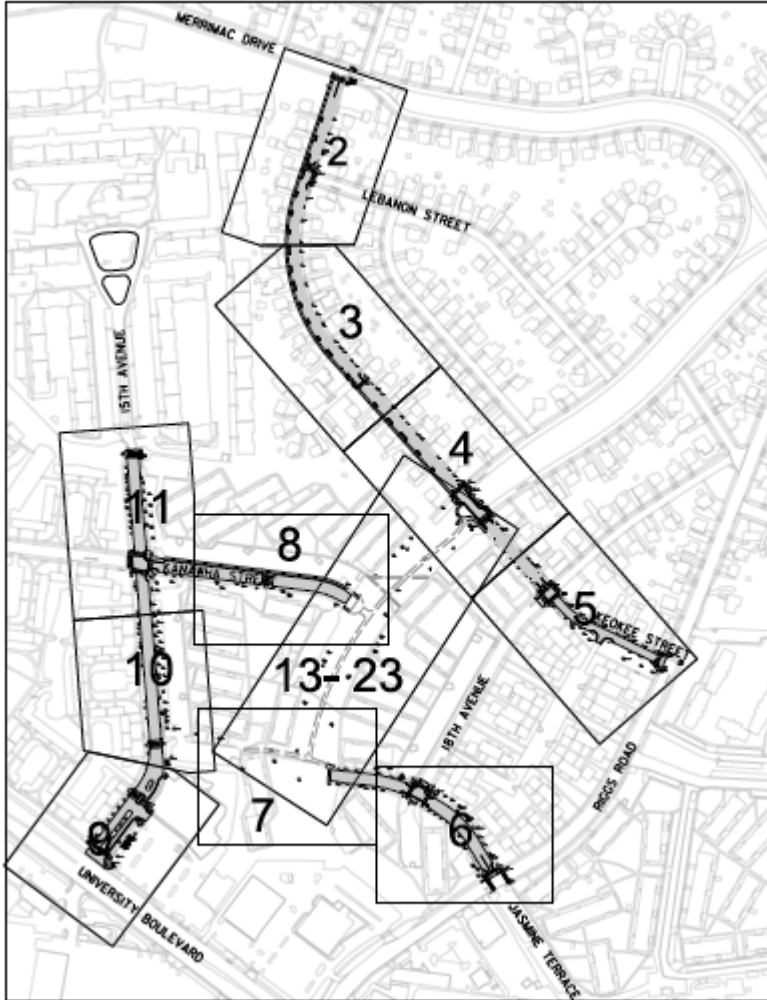


Tara H. Jackson
Acting County Executive

SAMPLE PLAN



Michael D. Johnson, P.E.
Director





Tara H. Jackson
Acting County Executive

SAMPLE PLAN



Michael D. Johnson, P.E.
Director





Tara H. Jackson
Acting County Executive



Michael D. Johnson, P.E.
Director

Cool Spring- Adelphi Pedestrian- Bike Access Project

Proud to Pave the Way
Multi-Modal Projects on the High Injury Network
Sub-project #3 of 7

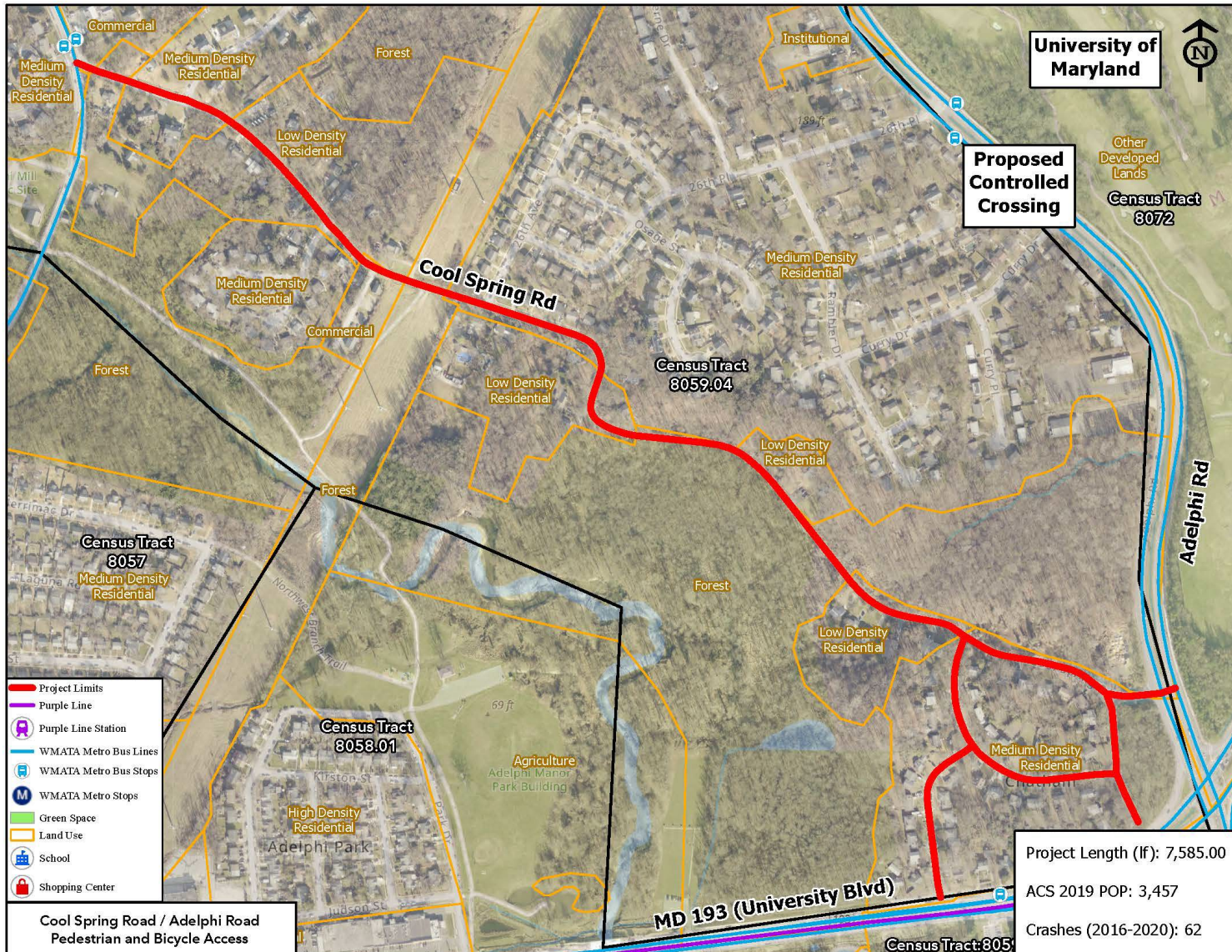


Tara H. Jackson
Acting County Executive

PROJECT LIMITS



Michael D. Johnson, P.E.
Director



- 2,000 LF new pathways
- 50 LED lights
- 5 wayfinding signs
- 3 crosswalks upgraded



Tara H. Jackson
Acting County Executive

PROJECT PHOTOS



Michael D. Johnson, P.E.
Director





Tara H. Jackson
Acting County Executive

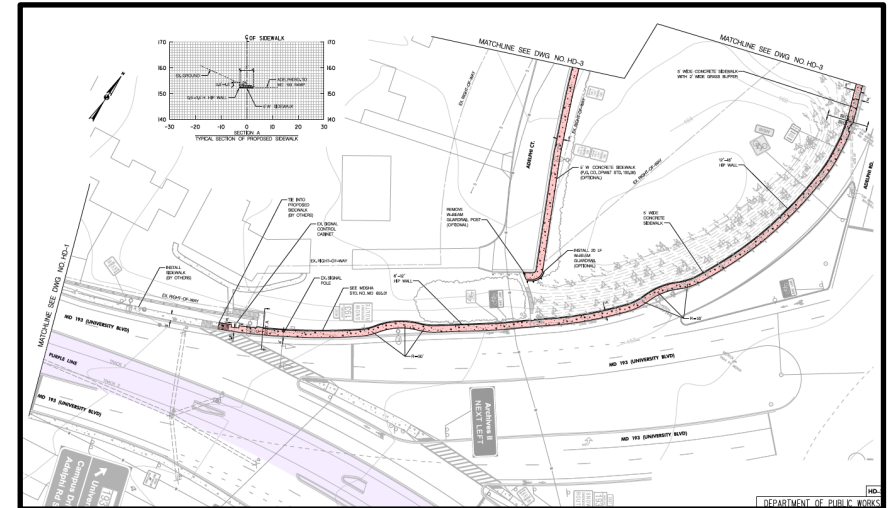
SAMPLE PLANS



Michael D. Johnson, P.E.
Director

Wayfinding

SIGNAGE SCHEDULE			
SIGN ID	SIGN TYPE	QTY, LAYOUT, ALIGNMENT	SIGN SUPPORT
WS1	011-1, 01-30	6 SF	ONE 14" GALVANIZED STEEL "H" CHANNEL SIGN POST
WS2	011-1, WS-1	3.2 SF	ONE 14" GALVANIZED STEEL "H" CHANNEL SIGN POST
WS3	011-1, WS-3	3.2 SF	ONE 14" GALVANIZED STEEL "H" CHANNEL SIGN POST
WS4	01-30	2.1 SF	ONE 14" GALVANIZED STEEL "H" CHANNEL SIGN POST
WS5	011-1, 01-30	10.5 SF	ONE 14" GALVANIZED STEEL "H" CHANNEL SIGN POST
TOTAL: 129.5 SF			





Tara H. Jackson
Acting County Executive



Michael D. Johnson, P.E.
Director

Sheriff Rd. Safety Improvement Project

From Eastern Avenue (DC line) to Glen Willow Drive

**Proud to Pave the Way
Multi-Modal Projects on the High Injury Network
Sub-project #4 of 7**

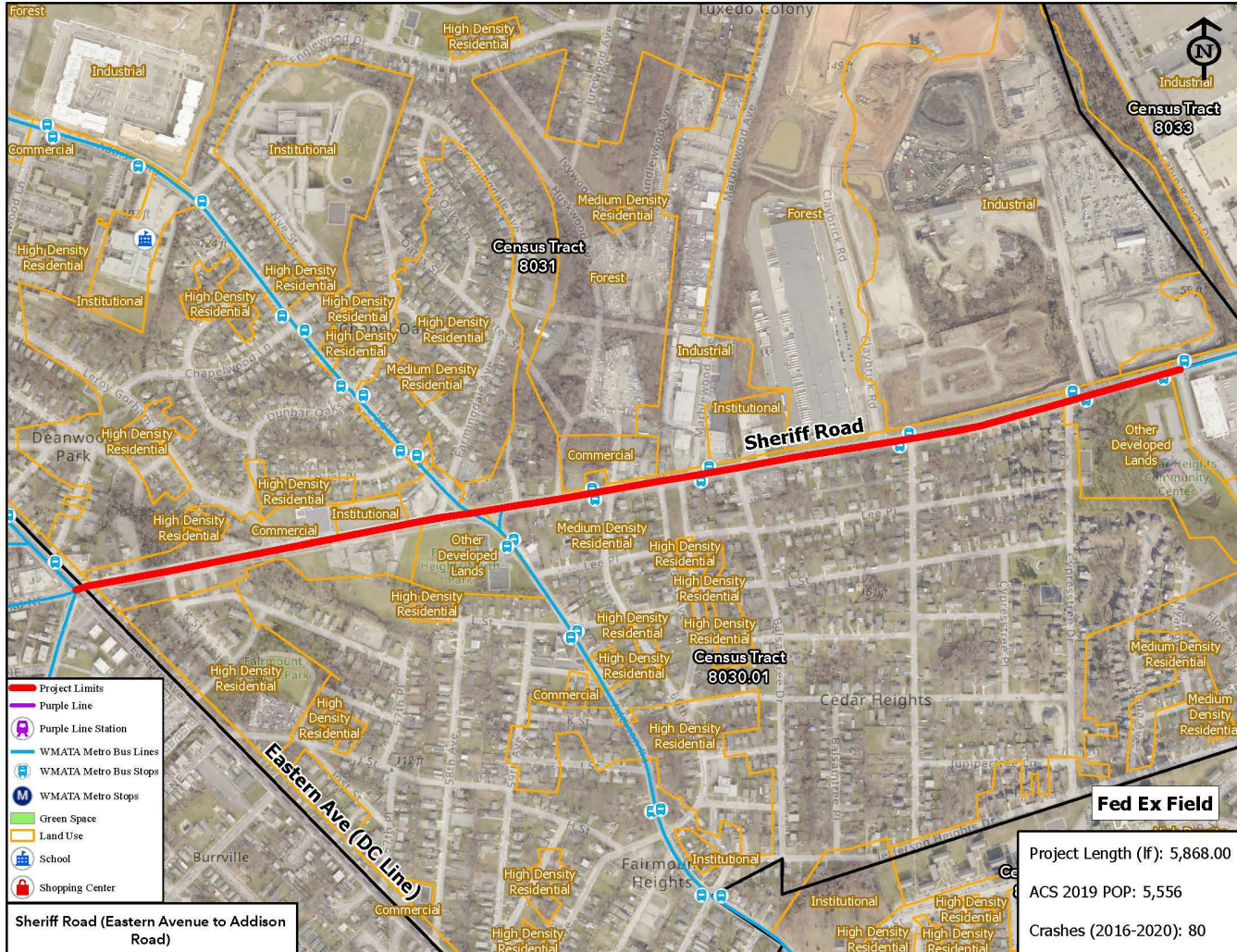


Tara H. Jackson
Acting County Executive

PROJECT LIMITS



Michael D. Johnson, P.E.
Director



- 1.0 Mile Road Diet with new median
- 1 Signal Reconstruct at Sheriff Rd. and Addison Rd.
- 1 EV Charging facility
- 2.0 miles of new bike lanes
- LED lighting upgrades



Tara H. Jackson
Acting County Executive

PROJECT PHOTOS



Michael D. Johnson, P.E.
Director



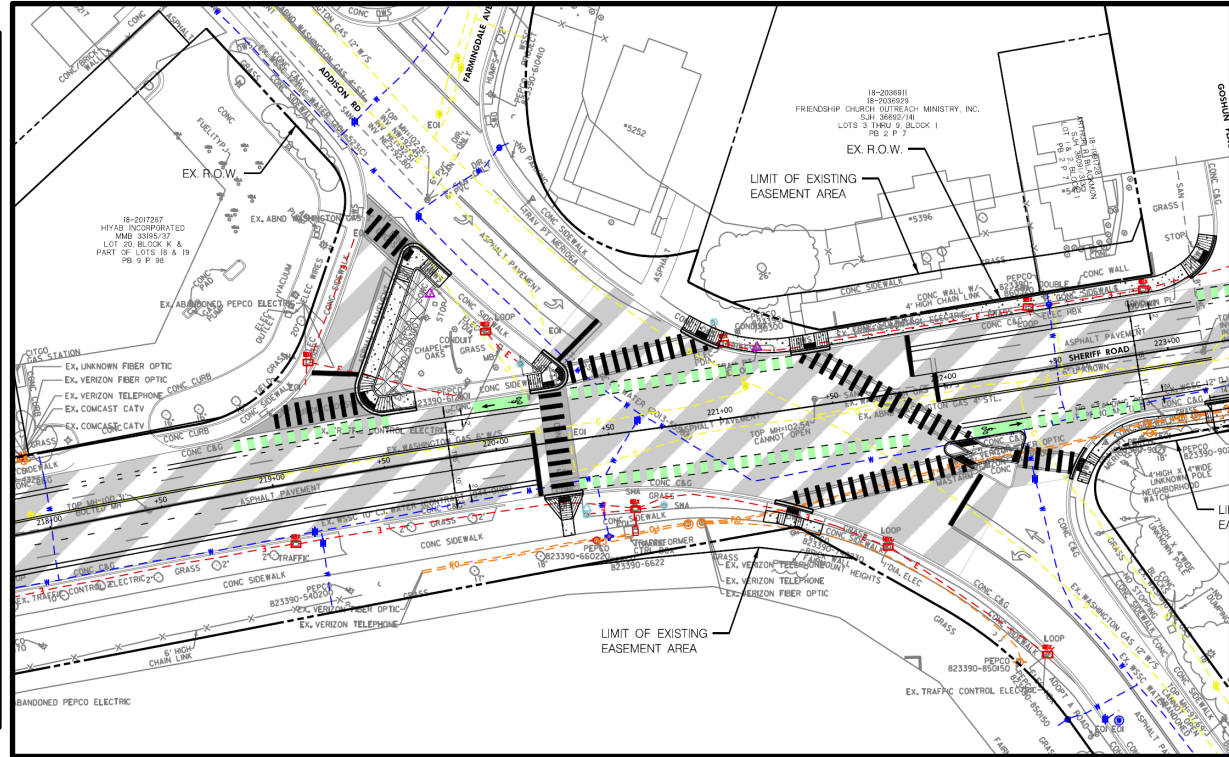
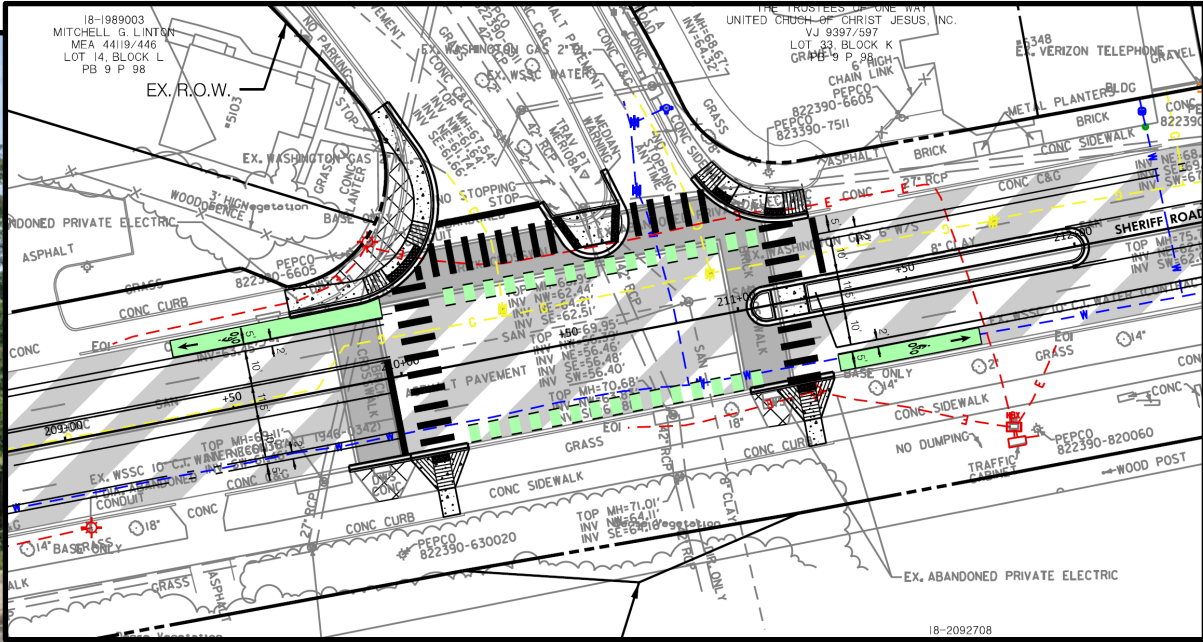


Tara H. Jackson
Acting County Executive

SAMPLE PLAN



Michael D. Johnson, P.E.
Director





Tara H. Jackson
Acting County Executive



Michael D. Johnson, P.E.
Director

Belcrest Rd. Safety Improvement Project

From Queens Chapel Road (MD 500) to Adelphi Road

Proud to Pave the Way
Multi-Modal Projects on the High Injury Network
Sub-project #5 of 7

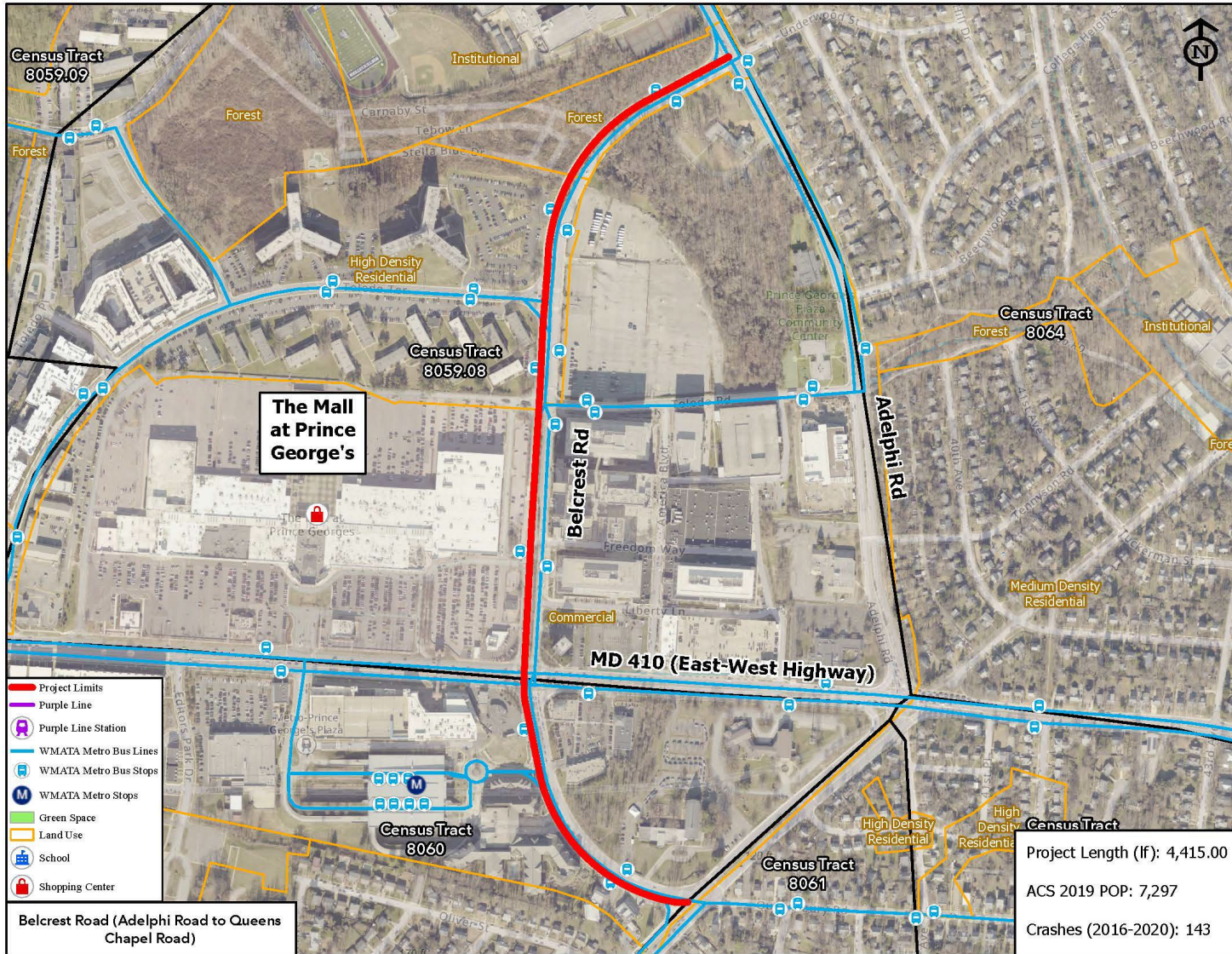


Tara H. Jackson
Acting County Executive

PROJECT LIMITS



Michael D. Johnson, P.E.
Director



- 1 New Hawk Signal
- 1,300 LF Off-Road H/B Path
- 1.5 miles of new Bike Lanes



Tara H. Jackson
Acting County Executive

PROJECT PHOTOS



Michael D. Johnson, P.E.
Director





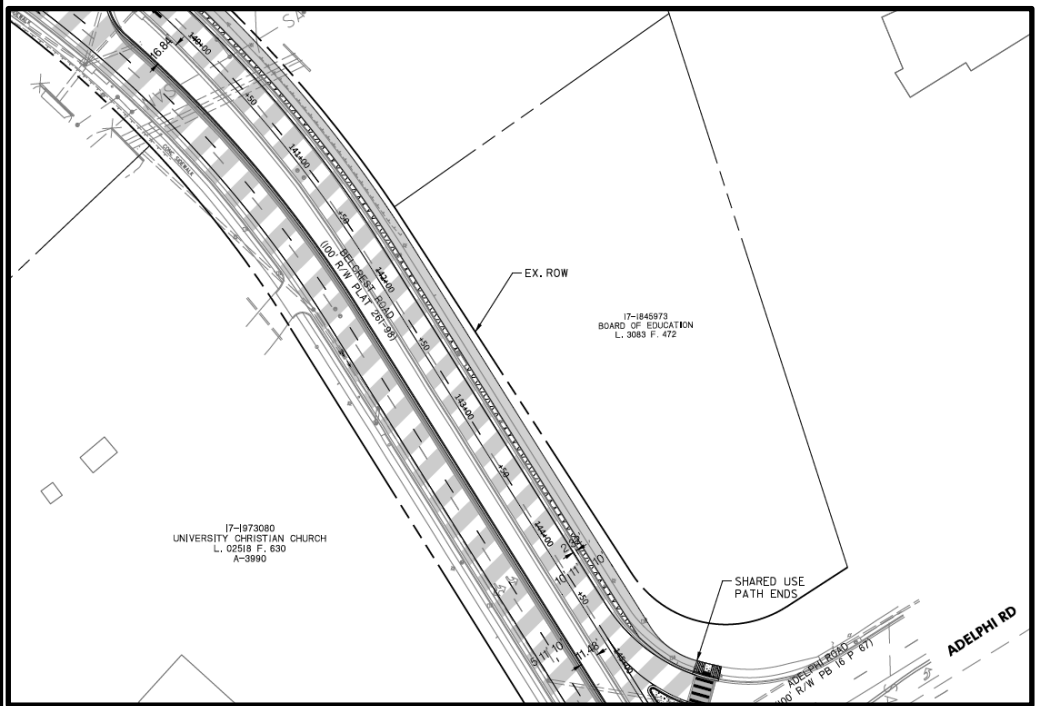
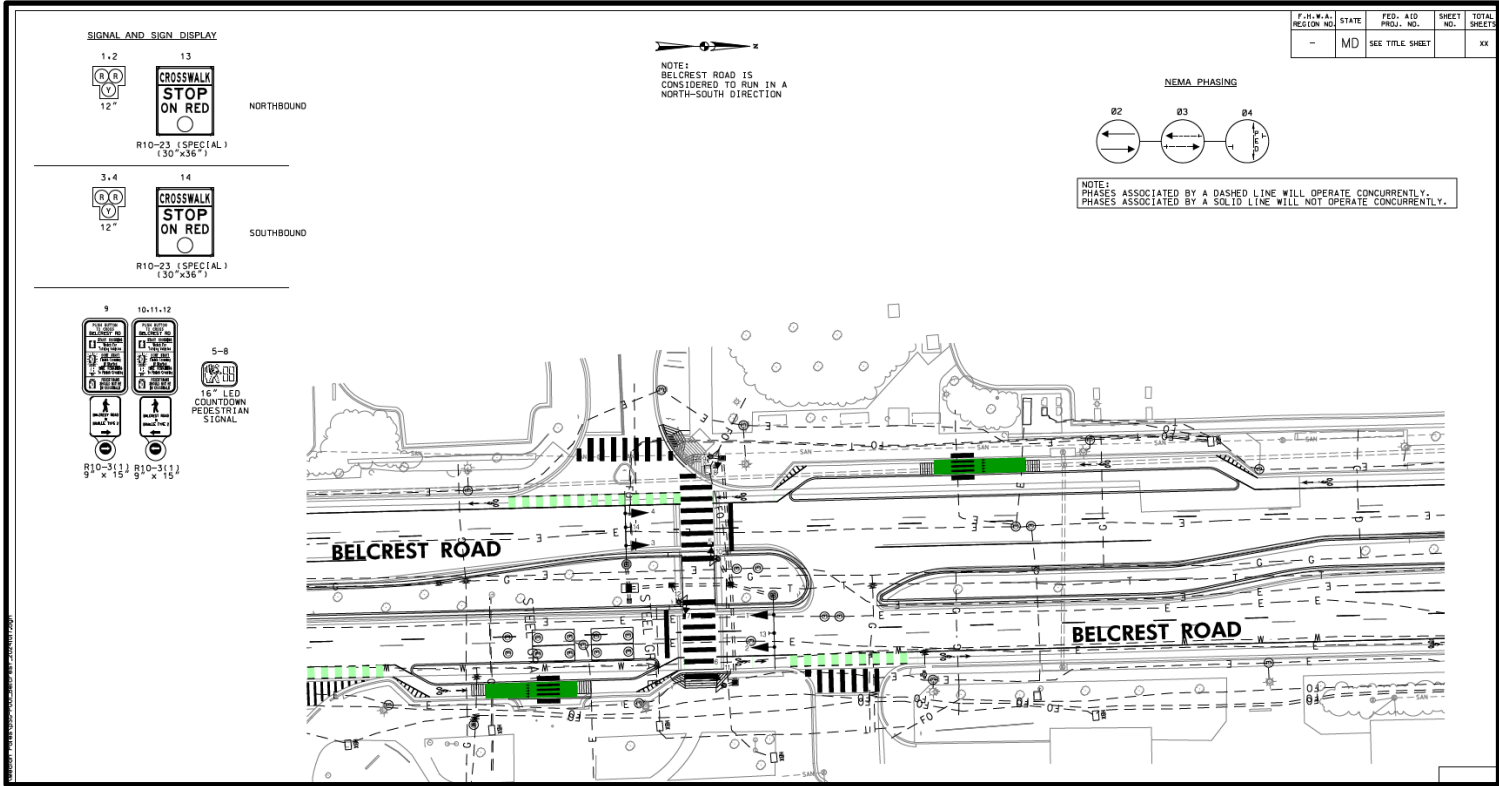
Tara H. Jackson
Acting County Executive

SAMPLE PLAN



Michael D. Johnson, P.E.
Director

HAWK SIGNAL





Tara H. Jackson
Acting County Executive



Michael D. Johnson, P.E.
Director

Adelphi Rd., Roadway Improvement CIP Project

Cool Spring Road to East-West Highway (MD 410)

Proud to Pave the Way
Multi-Modal Projects on the High Injury Network
Sub-project #6 of 7

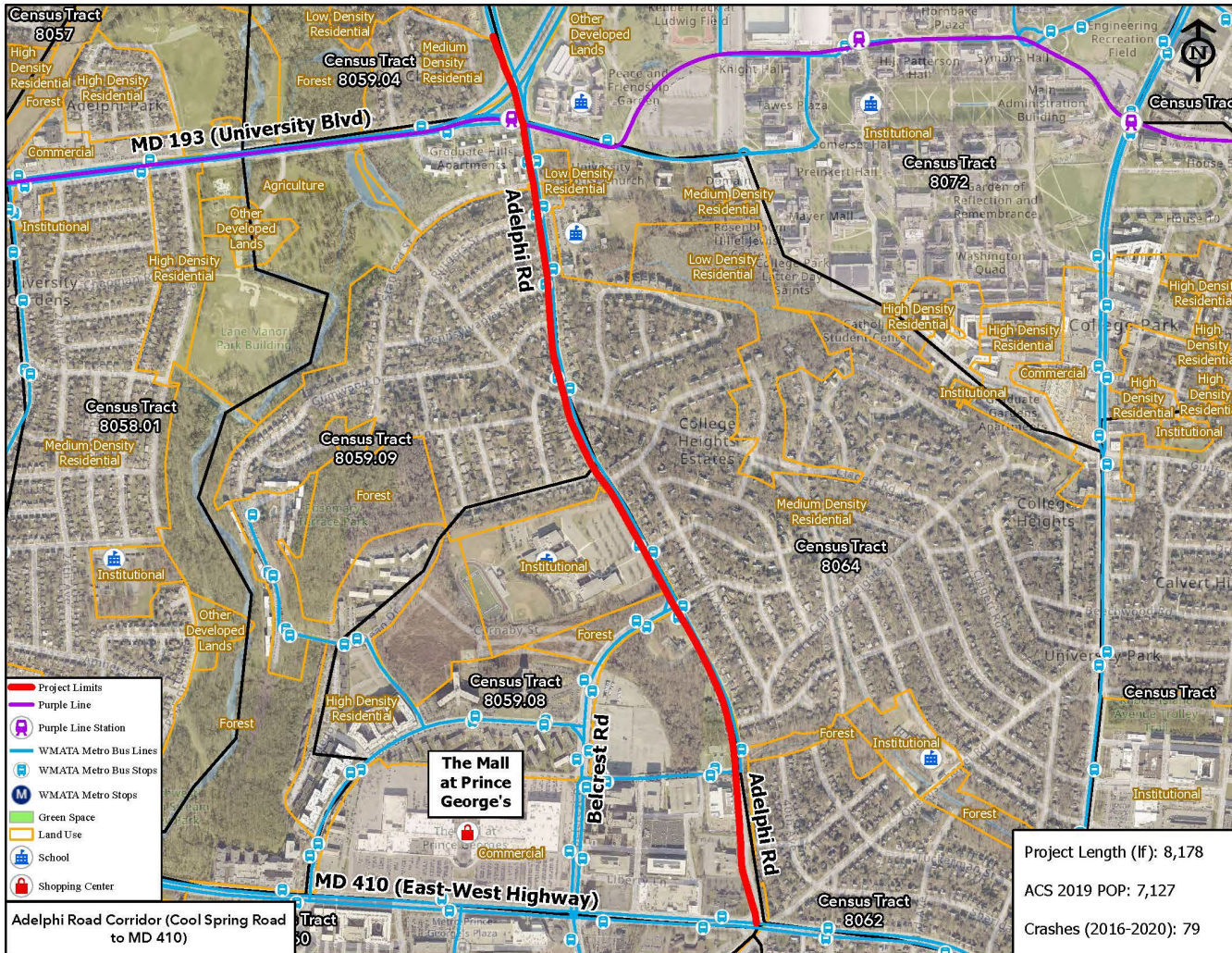


Tara H. Jackson
Acting County Executive

PROJECT LIMITS



Michael D. Johnson, P.E.
Director



- 1 Signal Reconstruct
- 1 signal modification
- 2 miles of bike lanes



Tara H. Jackson
Acting County Executive

PROJECT PHOTOS



Michael D. Johnson, P.E.
Director



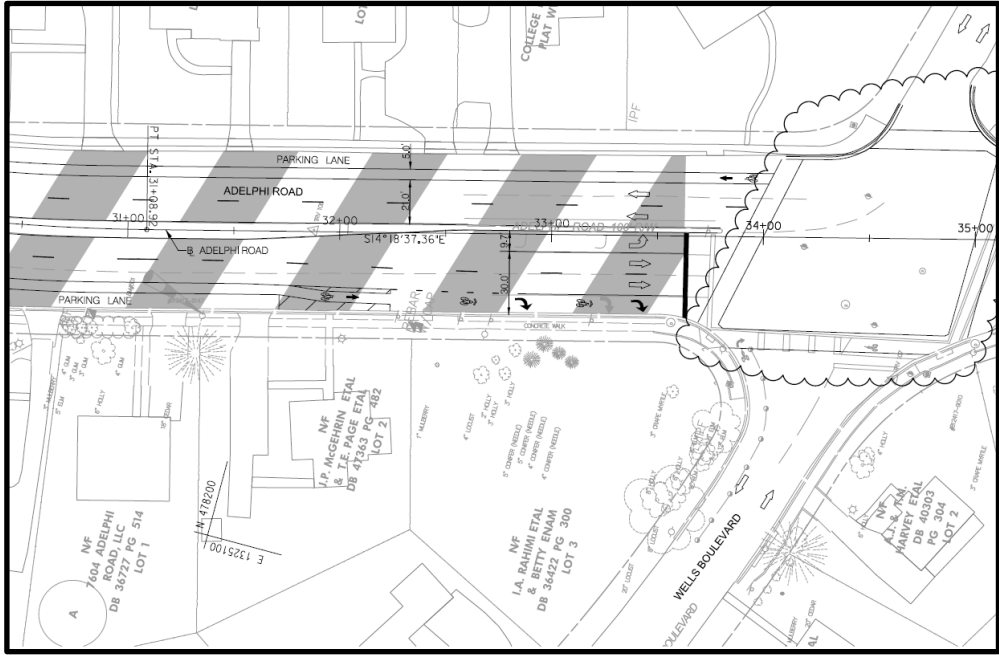
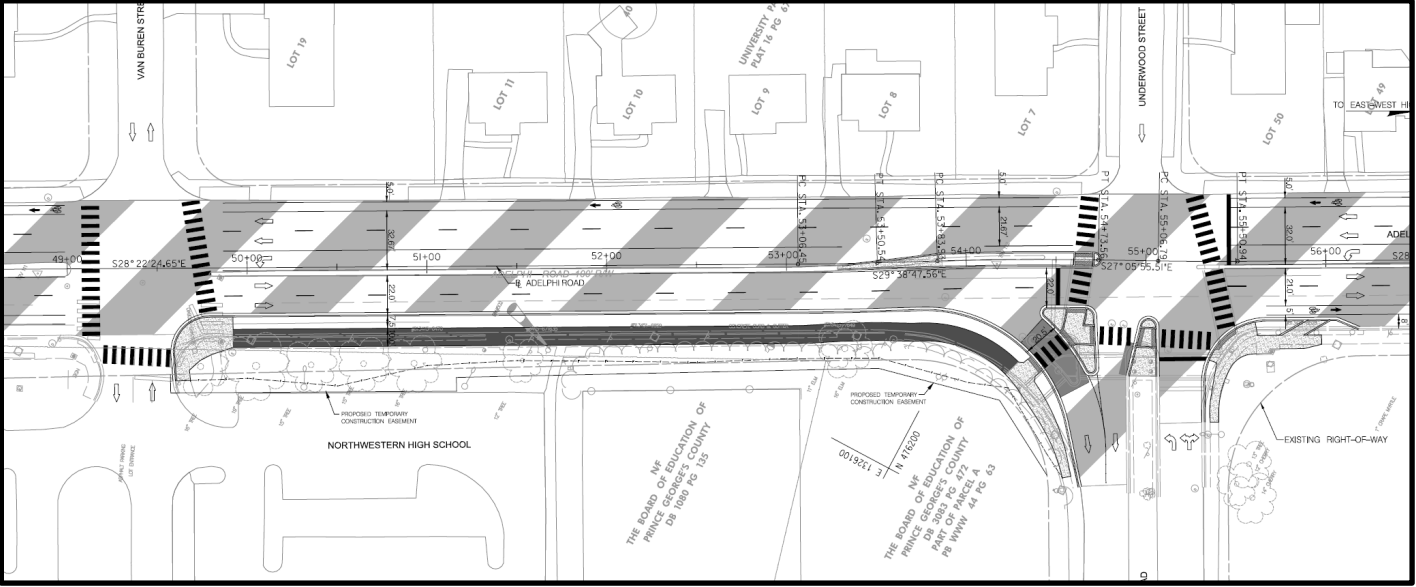


Tara H. Jackson
Acting County Executive

SAMPLE PLAN



Michael D. Johnson, P.E.
Director





Tara H. Jackson
Acting County Executive



Michael D. Johnson, P.E.
Director

Metzerott Rd., Adelphi Rd. to MD 193, Pedestrian Safety CIP Project

Adelphi Road to MD 193

Proud to Pave the Way
Multi-Modal Projects on the High Injury Network
Sub-project #7 of 7

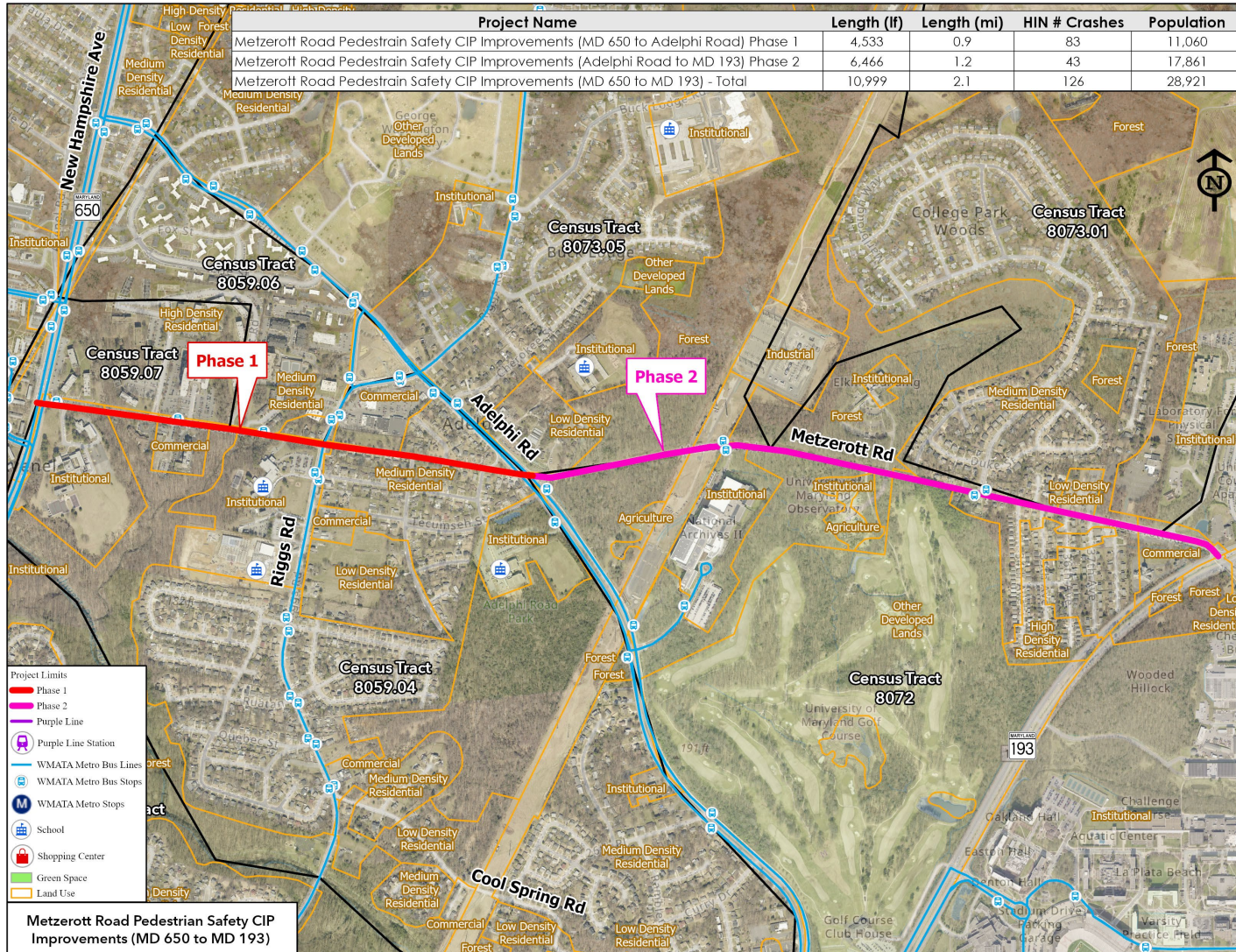


Tara H. Jackson
Acting County Executive

PROJECT LIMITS



Michael D. Johnson, P.E.
Director



- 1 Signal Reconstruct
- 1 mile of off-road path
- 2,000 lf of sidewalk



Tara H. Jackson
Acting County Executive

PROJECT PHOTOS



Michael D. Johnson, P.E.
Director



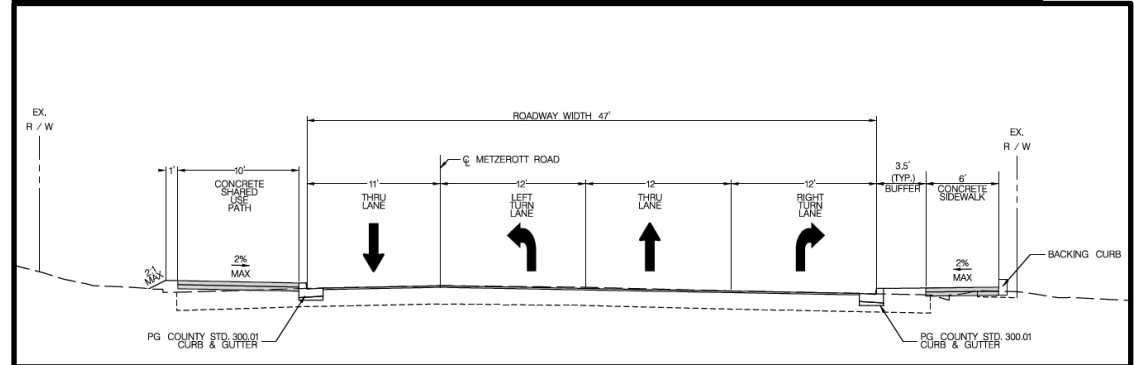
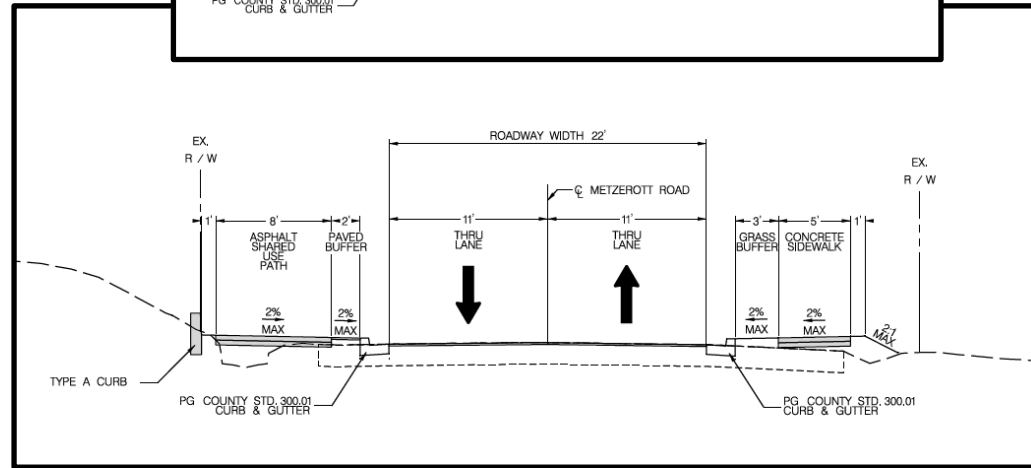
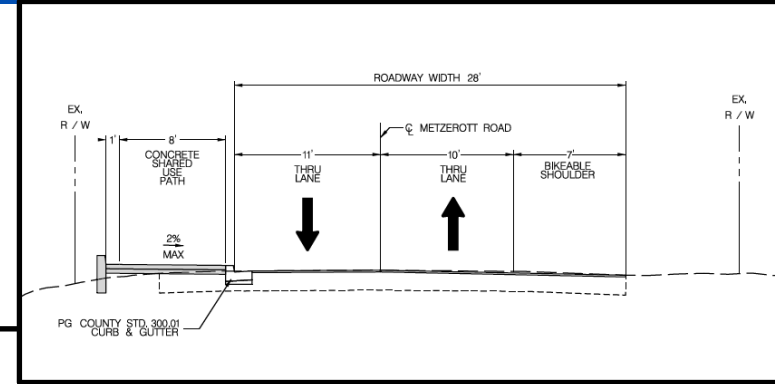
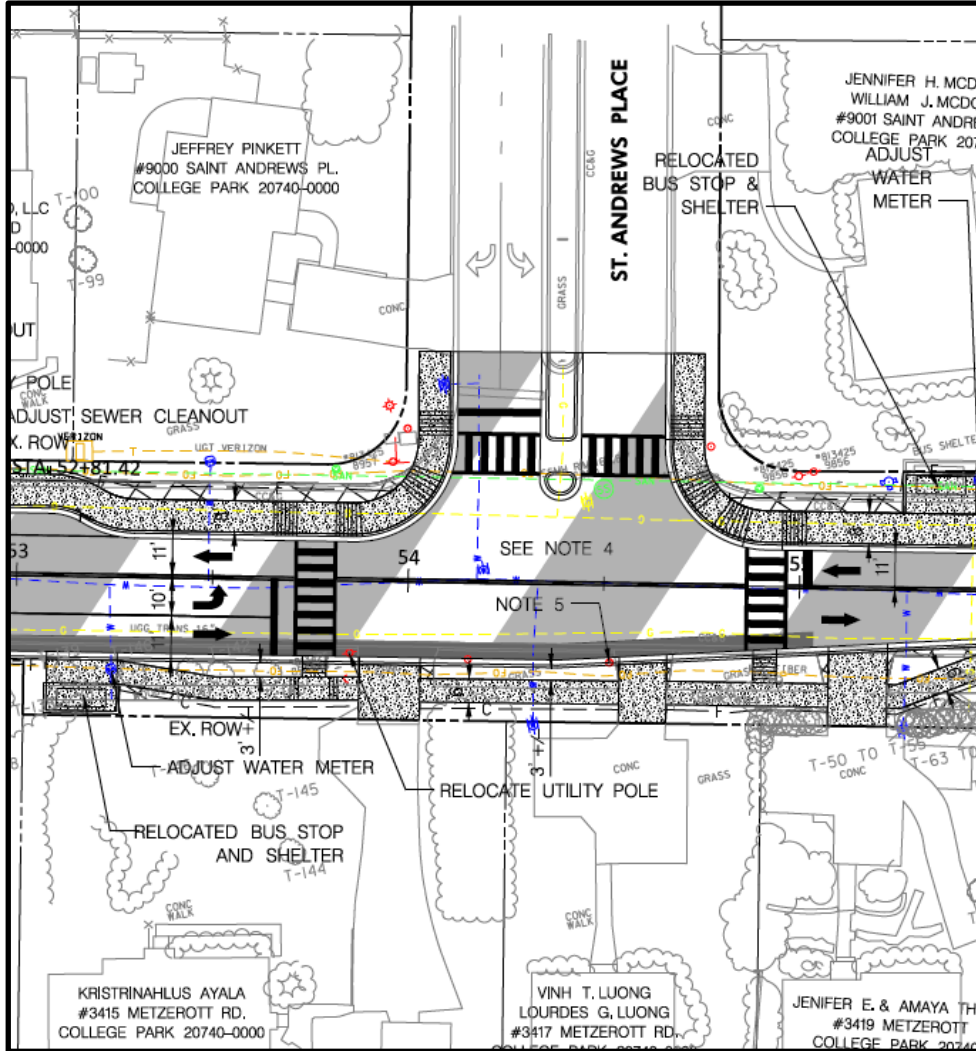


Tara H. Jackson
Acting County Executive

SAMPLE PLAN



Michael D. Johnson, P.E.
Director





SS4A Totals



Marlboro Pk., Pedestrian Safety Improvements Ph. 2, CIP Project

- 1.2 Mi. Road Diet with new landscaped median
- 5 Signal Reconstructs /2 RRFBs
- 2 SWM facilities
- 50 new LED lights
- ADA Compliant

Metzerott Rd., Adelphi Rd., to MD 193. Pedestrian Safety CIP project

- 1 Signal Reconstruct
- 1 mile of off-road path
- 2,000 lf of sidewalk

Langley Park Pedestrian-Bike Access Project

- 1,100 LF 10' path
- 2,500 LF new 5' sidewalk
- 30 crosswalk upgrades
- 60 ADA ramp upgrades
- 3 Stormwater Management facilities

Cool Spring-Adelphi Pedestrian-Bike Access Project

- 2,000 LF new pathways
- 50 LED lights
- 5 wayfinding signs
- 3 crosswalks upgraded

Sheriff Rd. Safety Improvement Project

- 1.0 Mile Road Diet with new median
- 1 Signal Reconstruct at Sheriff Rd. and Addison Rd.
- 1 EV Charging facility
- 2.0 miles of new bike lanes
- LED lighting upgrades

Belcrest Rd. Safety Improvement Project

- 1 New Hawk Signal
- 1,300 LF Off-Road H/B Path
- 1.5 miles of new Bike Lanes

Adelphi Rd., Roadway Improvement CIP Project

- 1 Signal Reconstruct
- 1,000 LF Off-Road H/B Path
- 2 miles of Bike Lanes
- ADA Compliant

=



Tara H. Jackson
Acting County Executive

SCHEDULE



Michael D. Johnson, P.E.
Director

TASK DESCRIPTION	DATES
NTP / Kick-off	COMPLETE
BASIC EXISTING CONDITIONS PLAN/ FIELD MEETINGS	COMPLETE
Topographic Survey / Utility Research / Right-of-way mosaic	NOW
Meetings with Local Community	Early 2025
30% PLANS	Mid 2025
Complete Design and Permitting	CY 2026
Advertise Construction Contract	Late 2027
Start Construction	CY Early 2028
Complete Construction	CY 2028 / Early 2029



Tara H. Jackson
Acting County Executive

CONTACTS



Michael D. Johnson, P.E.
Director

POINTS OF CONTACT DURING DESIGN:

Erv Beckert, P.E.

Chief, Highway and Bridge Design Division

Mobile: 240-508-9610

Email: etbeckert@co.pg.md.us

Stephanie Walder

DPW&T Project Manager

Mobile: 240-204-0353

Email: SAWalder@co.pg.md.us

POINTS OF CONTACT DURING CONSTRUCTION:

Dwight Joseph

DPW&T Project Manager

Phone: 301-883-5633

Email: DJoseph@co.pg.md.us





Michael D. Johnson, P.E.
Director

Proud to Pave the Way
Multi-Modal Projects on the High Injury Network

THANK YOU!

QUESTIONS?