

# Pedestrian and Bicycle Plan for the National Capital Region – Progress Check-in

Ayden Cohen, Toole Design Group

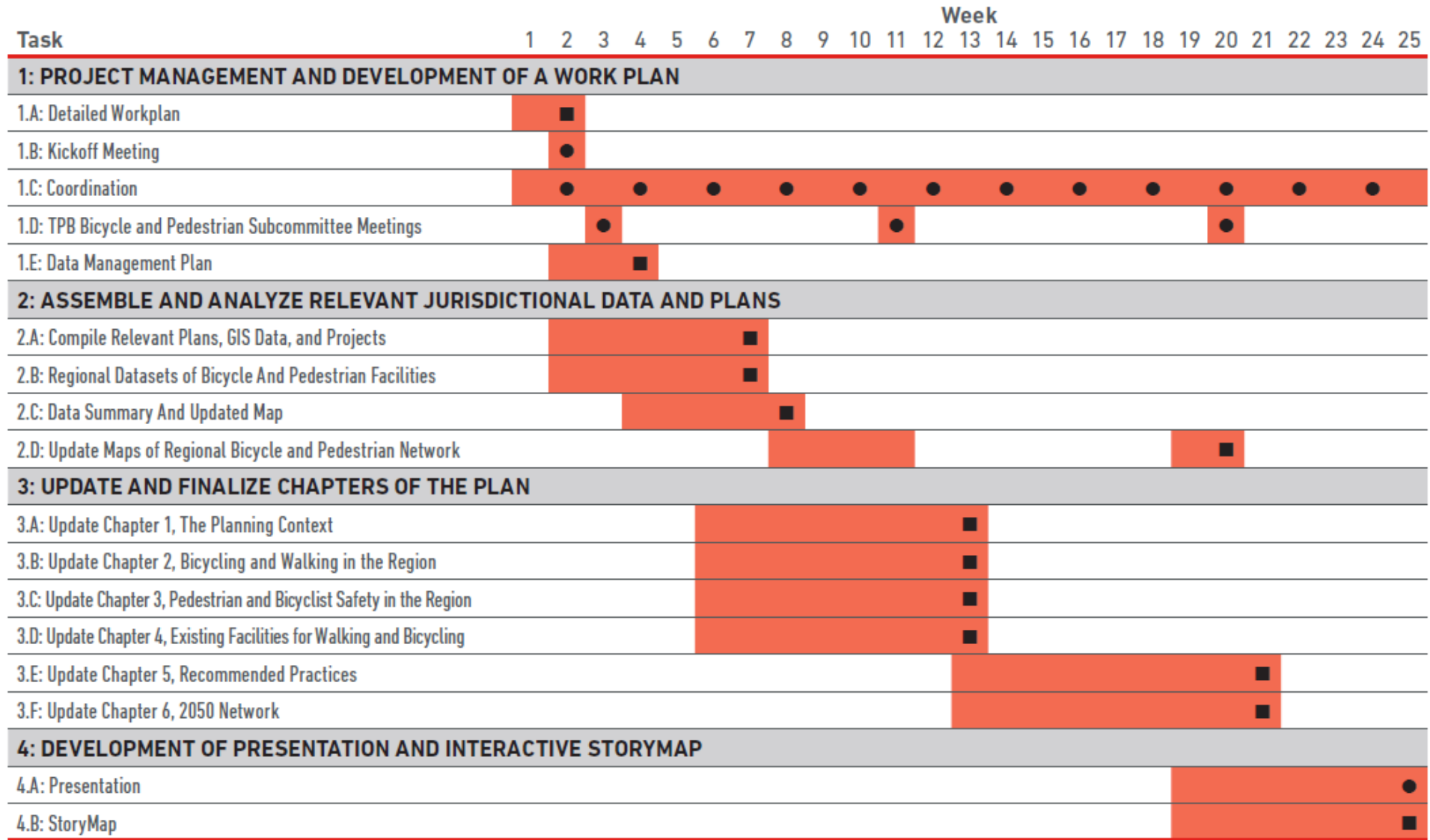
**BICYCLE AND PEDESTRIAN PLAN FOR  
THE NATIONAL CAPITAL REGION**

May 2022



National Capital Region  
Transportation Planning Board

# Project Schedule



- Meetings
- Deliverables

# Project Update

- Data has been compiled and standardized
- Comment period will be concluding
- Final preparations to conflate data to Linear Referencing System (LRS)

Attribute Name (based on MDOT)	Attribute Description	Possible Values	Notes/Comments
<i>(preceding fields from LRS)</i>			<i>based on each of the state base LRS network</i>
<b>route_id</b>	<i>(reserved)</i>		
<b>facility_name</b>	Project or Facility Name	text	Facility / project name from source, if available.
<b>fac_id</b>	Facility ID		new Facility ID
<b>on_street</b>	facility on-street or off-street	Y / N	Provided in column attribute from source, if available Or generated based on the facility type
<b>fac_type</b>	Facility Type	Standard Bike Lane Protected Bike Lane Shared Use Path Shared Road Lane Sidewalk	Based on MDOT Bicycle Inventory format, addition in bold
<b>detailed_fac_type</b>	Detailed Facility Type	Sidewalk Bicycle Boulevard Bike Lane Bike Route	Based on MDOT Bicycle Inventory format, addition in bold. Allows for municipalities to suggest a facility type for "Further Study" lines for cost estimate purposes.



# Comment Status

---

- Comments are sorted in three categories:
  - Generic Rule/Application
  - Manual Edit – Facility Type
  - Manual Edit – Facility Extents
- Toole will reach out as needed for facility extent revisions.

# National Capital Trail Network

---

- Toole is conflating the current network with the updated existing facilities.
- MWCOCG will review the network for changes from the previous update.
  - This will require additional coordination with jurisdictions to confirm the final network.

# Questions?

Ayden Cohen || [aocohen@tooledesign.com](mailto:aocohen@tooledesign.com)