



TRANSIT WITHIN REACH PROGRAM

Recommendations for Project Funding in FY 2026-2027

Victoria Caudullo
TPB Transportation Planner & Grant Program Manager

TPB Technical Committee
November 7, 2025



National Capital Region
Transportation Planning Board

Agenda Item #3

Need & Purpose

- Opportunity: More than half of the region's job growth and over 40 percent of new households over the next decade are expected to be within a half mile of high-capacity transit
- Challenge: But even where transit is physically close, it often is not within reach for people who walk and bike.
- Goal: Fund small, high-impact projects that will make it easier to walk and bike to transit.



How the program is structured

- It's like TLC and the Regional Roadway Safety Program
 - Uses the same model of technical assistance as other TPB programs
 - Provides short-term consultant services, not direct financial assistance to TPB local government members
- ... But different
 - The TWR program is only for preliminary engineering and design (up to 30%), not planning
 - Program purpose is more focused: Improving access to transit
 - Two-year cycles of funding
 - Projects to be completed in 9-10 months, starting this winter and ending in late 2026
 - Program funded by UPWP Technical Assistance Regional Transit Account



Program Priorities

Seeking preliminary design and engineering projects that:

- Improve bike/ped access to High-Capacity Transit
- Increase transit ridership and/or utilize available ridership capacity
- Improve access for low-income communities
- Demonstrate collaboration with other agencies or jurisdictions
- Demonstrate strategies to advance project to construction

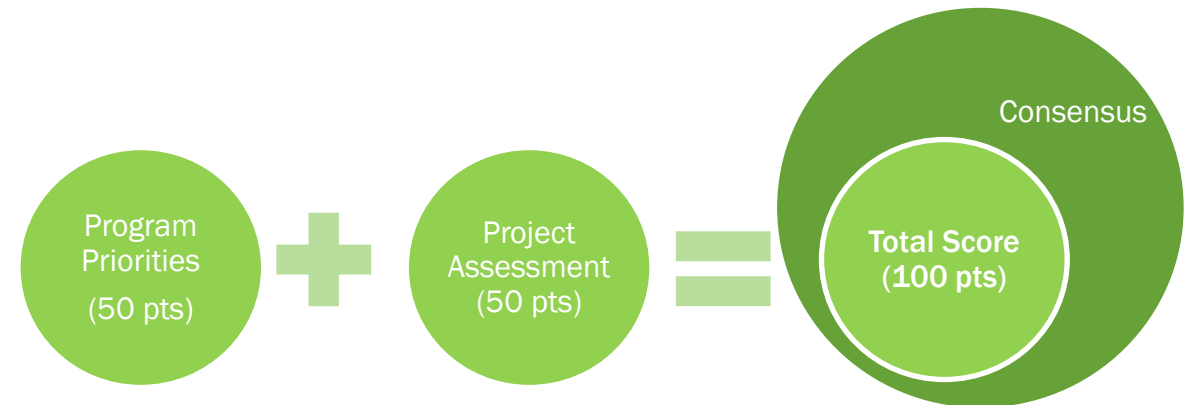


This year's solicitation

- \$250,000 available
- Application solicitation period from June to August 2025
- 3 applications were received for \$290,000 in funding requests

Selection

- Selection Panel
 - Chair of Regional Public Transportation Subcommittee
 - Previous Chair of Bicycle and Pedestrian Subcommittee
 - 3 TPB Staff
- Individual Evaluations
- Consensus Building Meeting – Seek balance among projects (regional balance, transit modes)

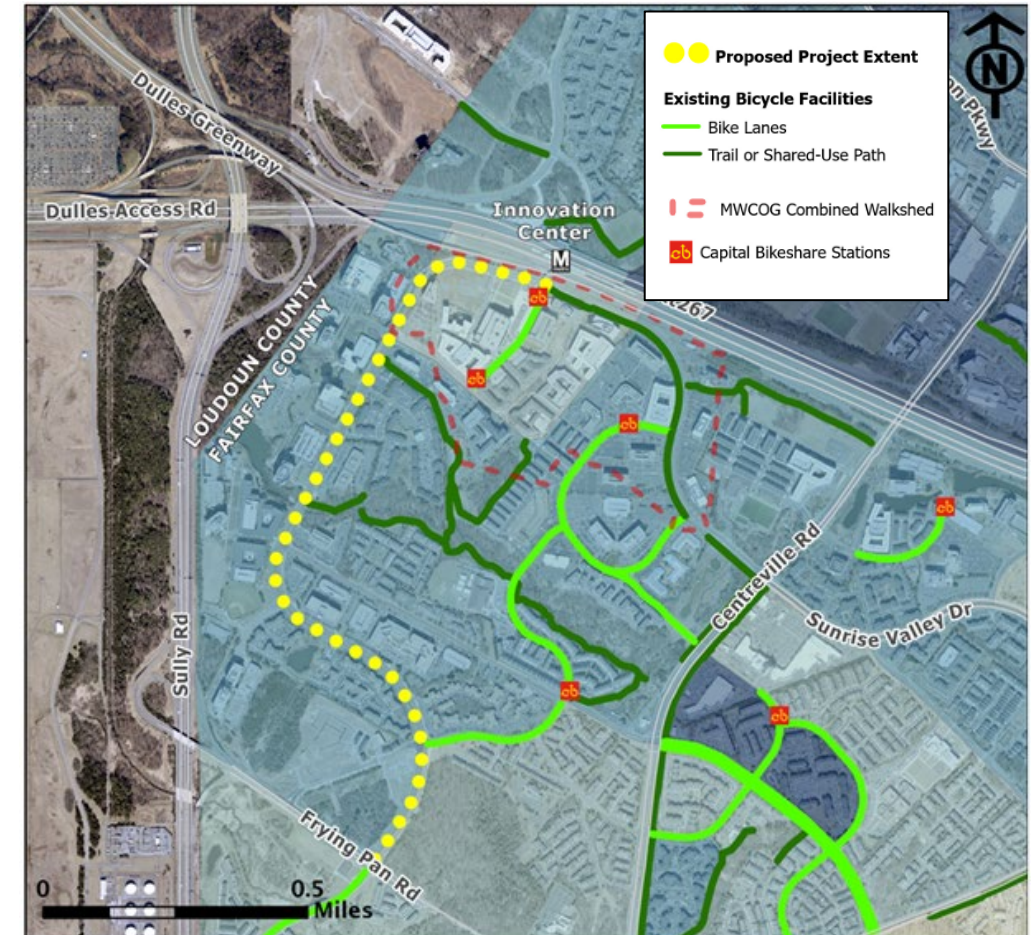


Draft Funding Recommendations

Jurisdiction Name	Project	Panel Recommendation
Fairfax County	Sunrise Valley Drive Protected Bicycle Infrastructure	\$84,000
Montgomery County	Lockwood Drive Shared Use Path	\$83,000
City of Rockville	Lewis Avenue Bicycle & Pedestrian Improvements	\$83,000



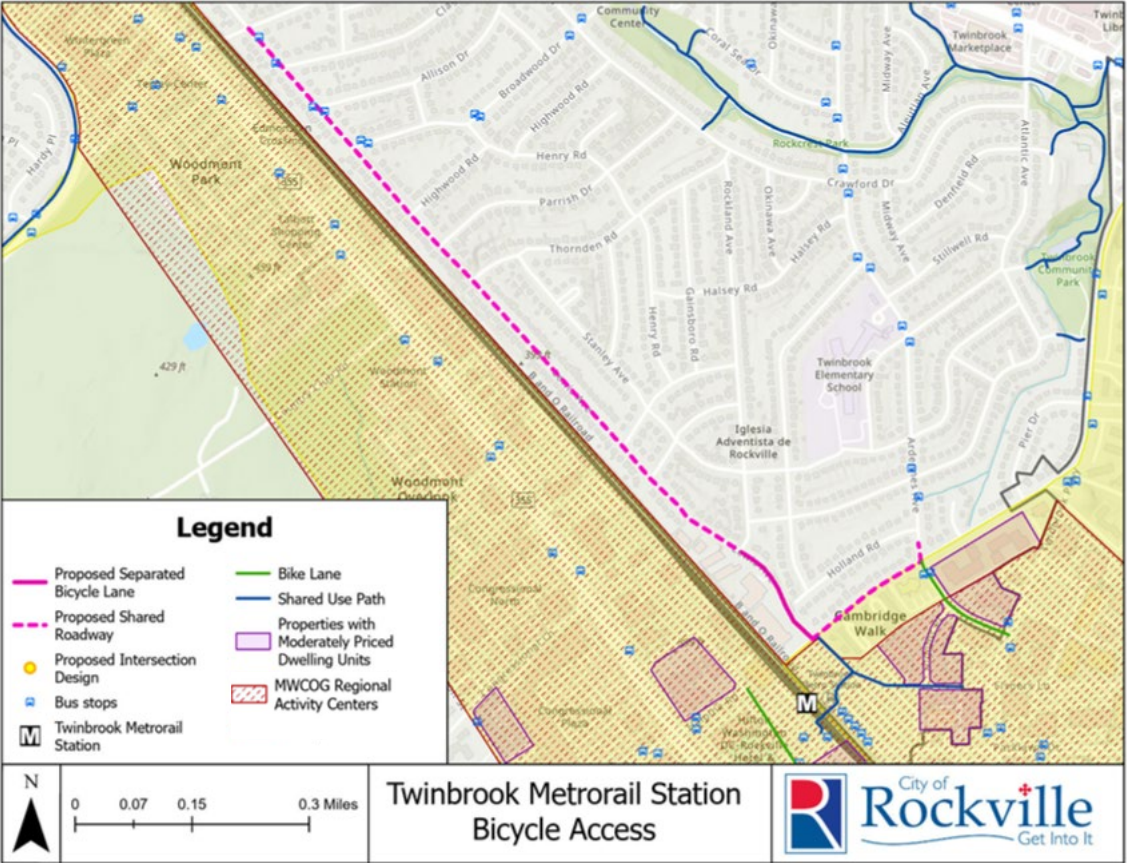
Sunrise Valley Drive Protected Bicycle Infrastructure – Fairfax County



Lockwood Drive Shared Use Path – Montgomery County



Lewis Avenue Bicycle & Pedestrian Improvements – City of Rockville



Next Steps

- Seek TPB approval of project recommendations on November 19
- Begin consultant selection process



Victoria Caudullo

TPB Transportation Planner & Grant Program Manager

vcaudullo@mwkog.org

mwkog.org

Metropolitan Washington Council of Governments

777 North Capitol Street NE, Suite 300

Washington, DC 20002



National Capital Region
Transportation Planning Board