

CO-OP Water Supply System Status



Cherie Schultz, PhD, Director of CO-OP Operations
Interstate Commission on the Potomac River Basin
Section for Cooperative Water Supply Operations on
the Potomac (CO-OP)

CO-OP water supply system – the good news

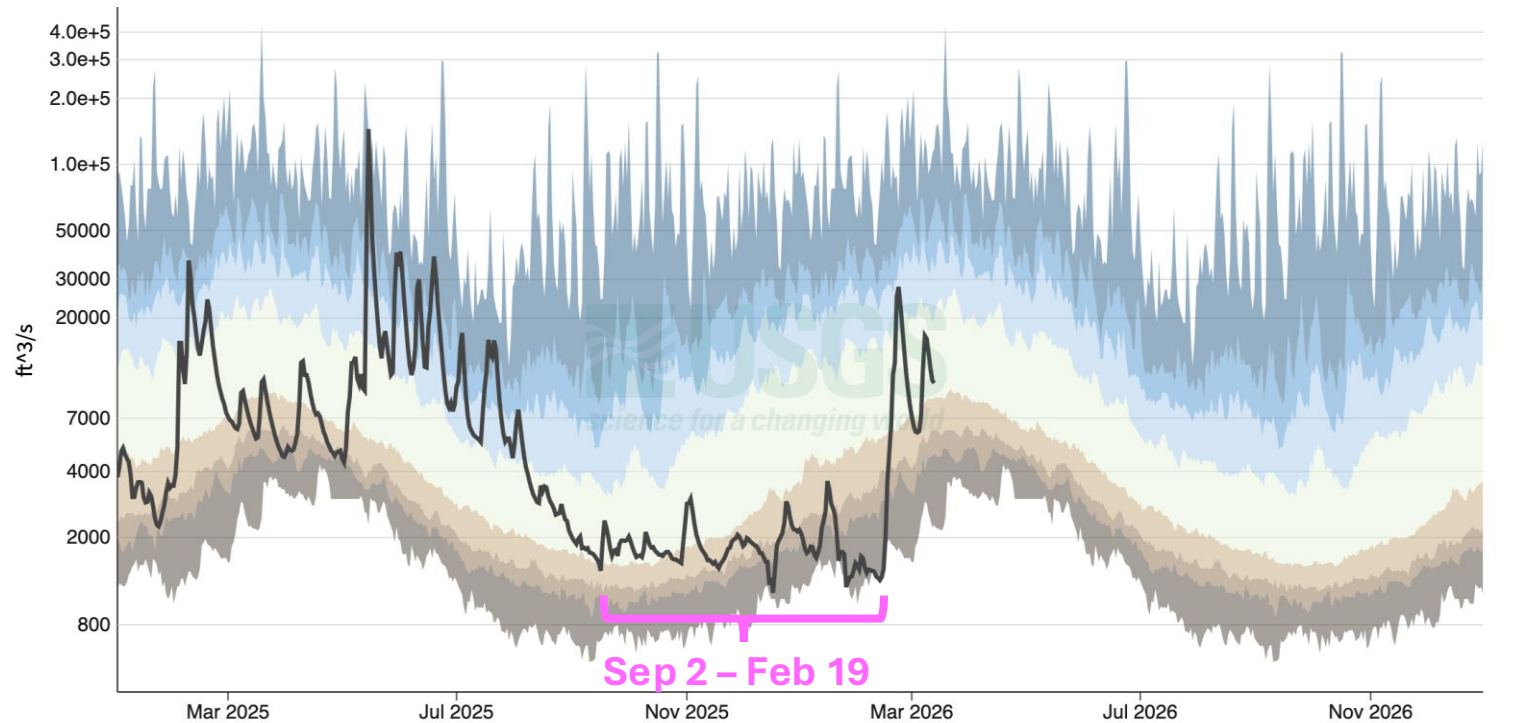
- Past 30-day precipitation was above normal (MARFC: 3.6 inches => +16%)
- System reservoirs are full or filling

Reservoir	Storage, BG	Storage, %
Little Seneca	3.87	100
Occoquan	8.17	100
Patuxent	7.38	70
Savage	4.19	66
Jennings R. water supply	13.10	100
Jennings R. water quality	14.42	88

CO-OP water supply system – concerning news

- Substantial precipitation deficits occurred most months since August
- CO-OP daily drought monitoring persisted thru winter months (Sep 2 - Feb 19)
- Drought Watches & Warnings in Potomac basin states of Maryland, Virginia, and Pennsylvania

Potomac River flow at Point of Rocks, Maryland (USGS)



IMPORTANT Data may be [provisional](#)

[Hide legend](#)

— Daily average (mean) for Discharge, cubic feet per second

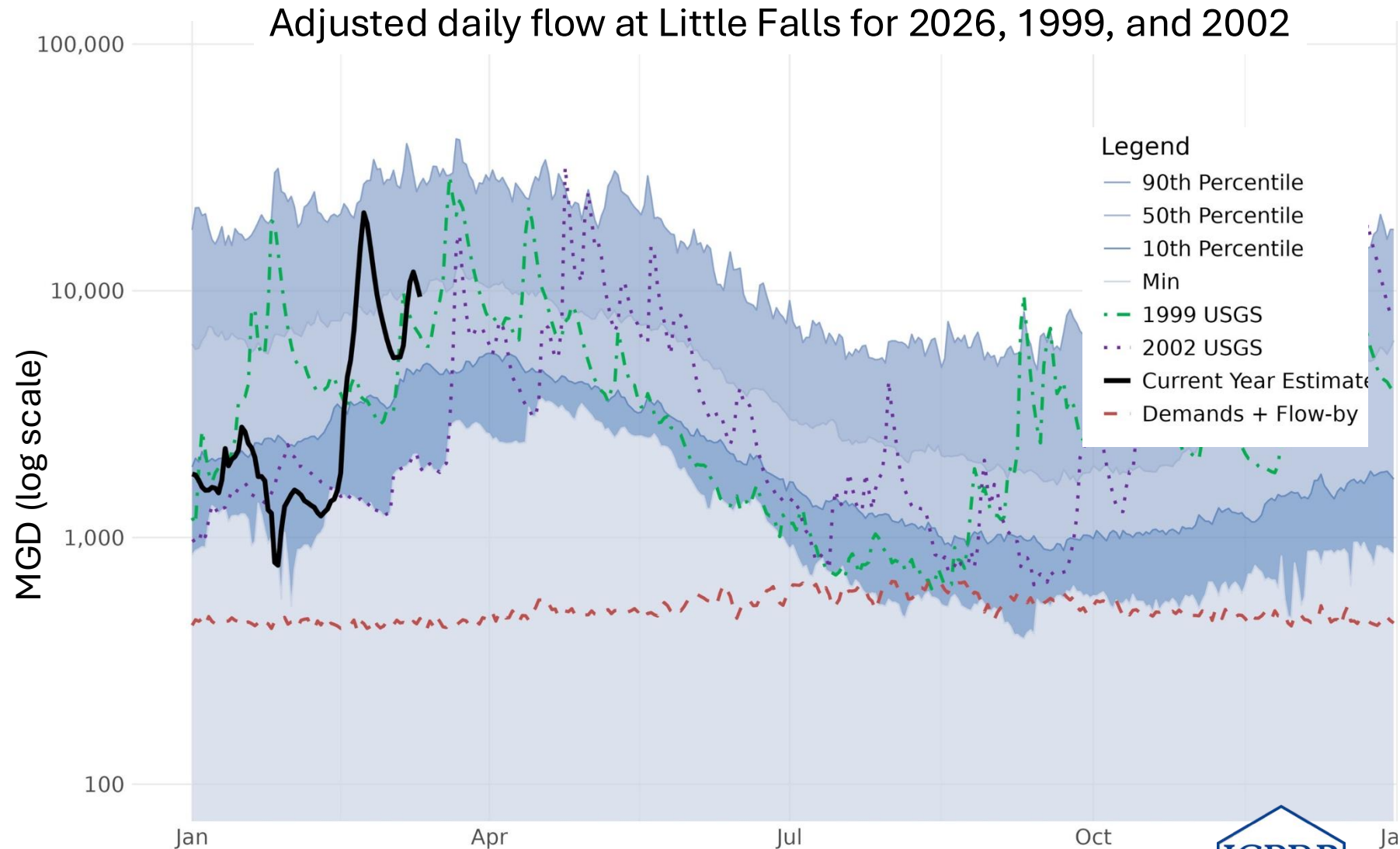
Percentile ranges for daily averages (means) for each day of a year (with comparison to normal)

0-5 Extremely below	5-10 Much below	10-25 Below normal	25-75 Normal	75-90 Above normal	90-95 Much above	95-100 Extremely above
------------------------	--------------------	-----------------------	-----------------	-----------------------	---------------------	---------------------------

CO-OP water supply system – concerning news

- Winter low flows resemble past drought operations years (1999 & 2002)
- New CO-OP seasonal forecast model*: elevated risk of summer drought operations

*Based on Potomac Reservoir and River Simulation Model and synthetic forecasted flows from K-nearest neighbor sampling of historical months



Adjusted flow is Potomac River flow that would occur at Little Falls in the absence of Washington metropolitan area withdrawals




2025 Washington Metropolitan Area Water Supply Study

- Probability of system reliability in any given year?
 - 2030: 99-100%
- Impact of data centers on upstream consumptive use?
 - Currently negligible
 - 2050: 3-8 MGD average and 12-29 MGD peak
 - Future remains uncertain, but could place significant pressure on regional water supplies
- Impact of climate change on river flows?
 - Likelihood of increases in high flow years and decreases in low flow years
 - Estimated impact on river flows in future extreme drought for 2010-2039: -11%

**2025 Washington Metropolitan Area
Water Supply Study**

**Demand and Resource Availability
Forecast for the Year 2050**



ICPRB
potomacriver.org

DECEMBER 2025
ICPRB REPORT No. ICP-596
PREPARED BY S.N. AHMED, K. BENCALA, S. NUMMER, C.L. SCHULTZ, AND A. SECK
SECTION FOR COOPERATIVE WATER SUPPLY OPERATIONS ON THE POTOMAC

INTERSTATE COMMISSION ON THE POTOMAC RIVER BASIN
401 N. WASHINGTON ST. STE 300 · ROCKVILLE, MD 20850

Summer 2026 outlook
CO-OP system is more vulnerable than
usual to a prolonged summer dry spell