

# BICYCLE AND PEDESTRIAN PLAN FOR THE NATIONAL CAPITAL REGION

---

## 2026 Update

Michael Farrell  
TPB Senior Transportation Planner

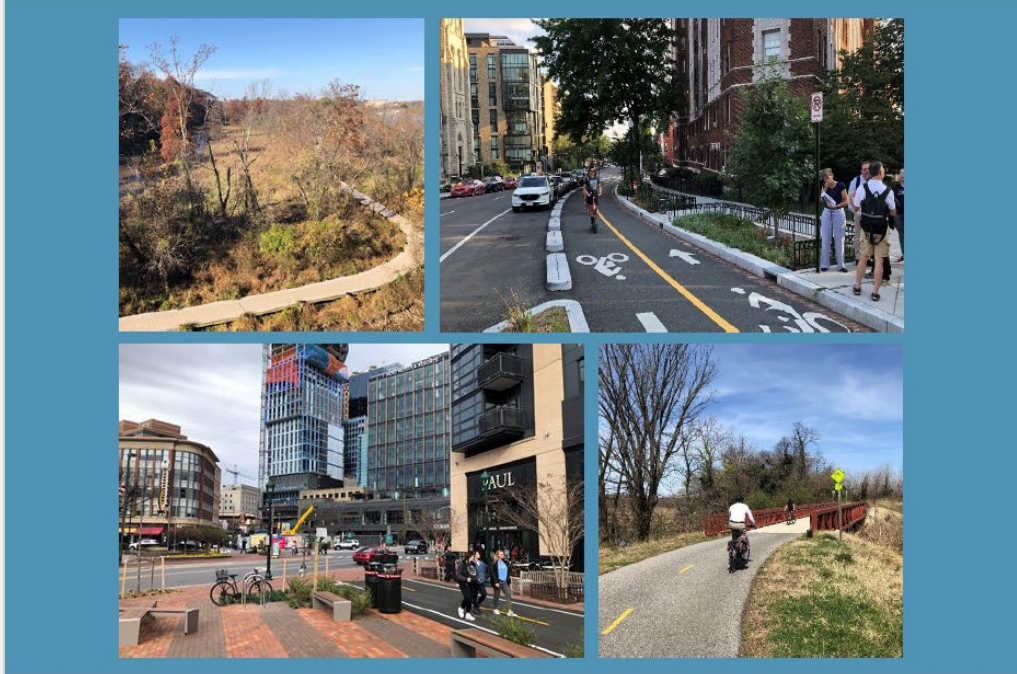
July 1, 2026



National Capital Region  
**Transportation Planning Board**

# BICYCLE AND PEDESTRIAN PLAN FOR THE NATIONAL CAPITAL REGION

May 2022



National Capital Region  
Transportation Planning Board



National Capital Region  
Transportation Planning Board

# The 2022 Plan

---

- TPB approved the current plan in May 2022
- Plan provided:
  - An overview of state of bicycling and walking in the Washington region
  - Planned bicycle and pedestrian facilities, both funded and unfunded
  - A project database and map, compiled from Agency and Jurisdiction Plans
  - Best Practices in Design, Planning, and Maintenance
  - A buffer analysis that showed how the planned projects serve TPB priorities
  - More detail than Visualize
- Plan is updated every four years.
- Currently working with Toole Design Group on the 2026 Update
  - Toole brings extensive experience in data gathering, and wrote the new NACTO Bike Guide



# Progress Since 2022

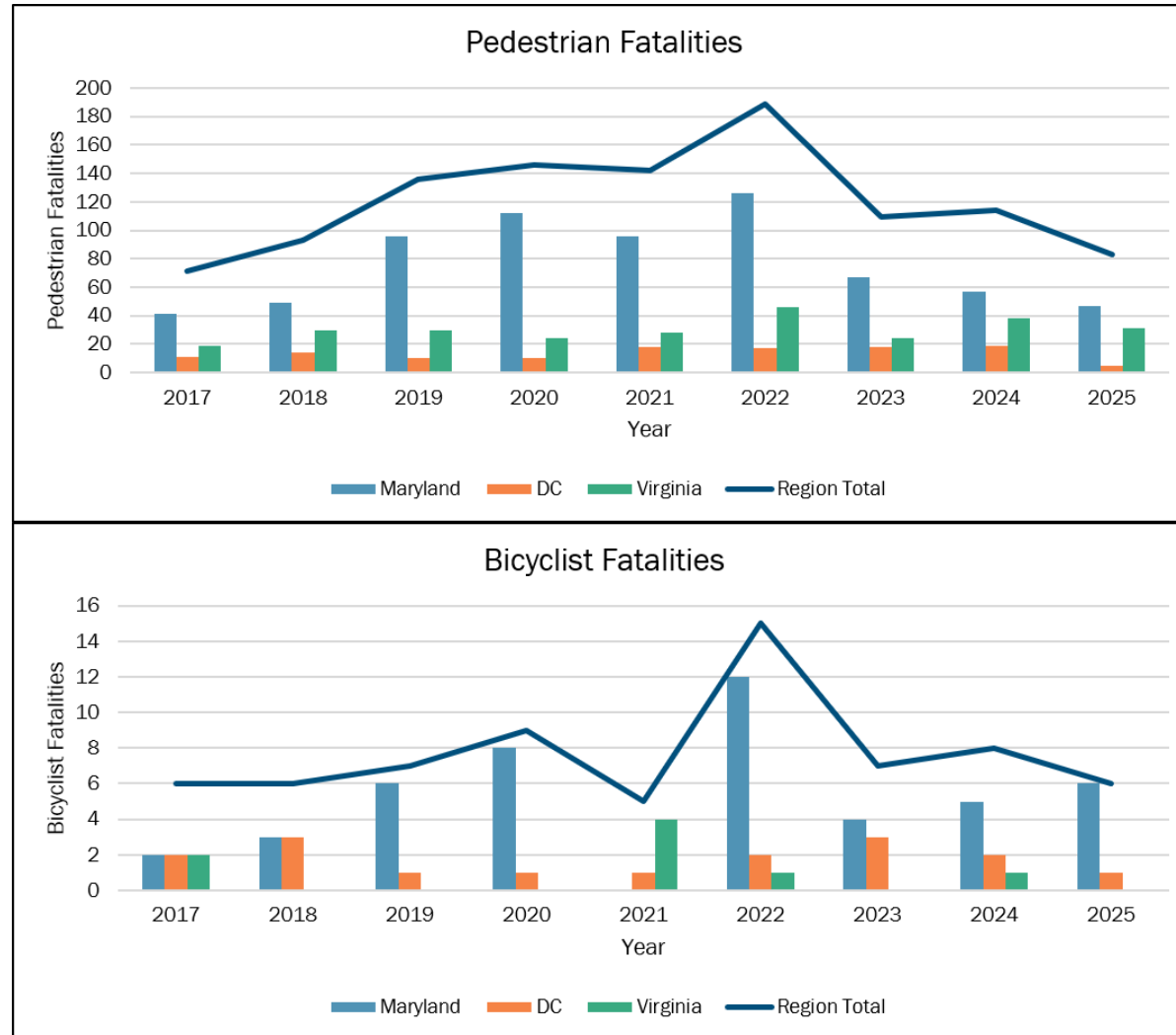
- Pedestrian and Bicyclist Deaths fell 50% from their peak in 2022 back to pre-pandemic levels
- Maryland and Virginia have adopted Statewide transportation trails plans
- Complete Streets, Green Streets, & Vision Zero Practices Widely Implemented
- New trails & Trail-Oriented Development
  - Frederick Douglass Bridge - DC
  - 66 Parallel Trail – Fairfax County
  - Rhode Island Avenue Trolley Trail – Prince Georges
  - Potomac Yards Trail (Alexandria)
  - Purple Line Trails (under construction)



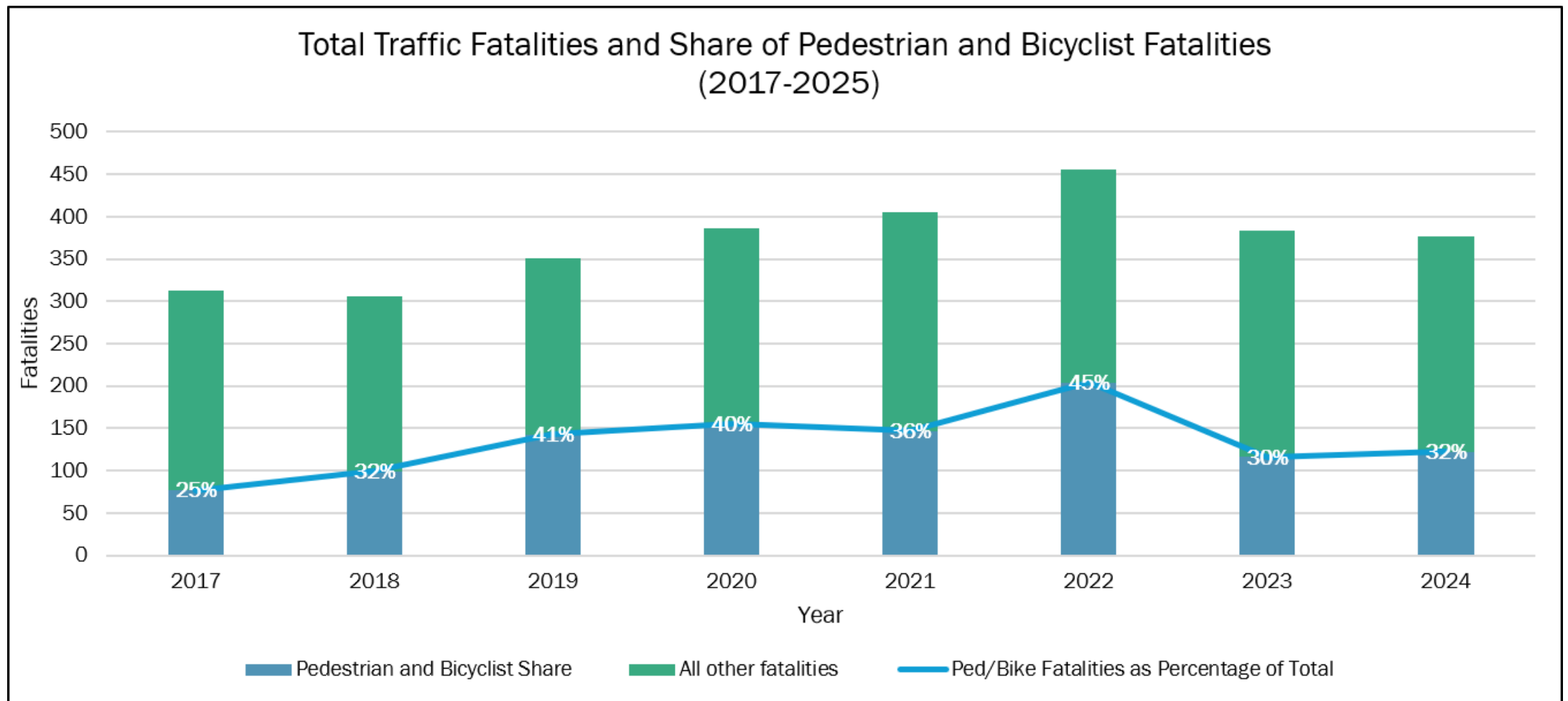
Holland Lane, Alexandria Road Diet (Michael Farrell/COG)



# Pedestrian and Bicyclist Fatalities



# Nonmotorized Share of Traffic Fatalities



# Continuing Themes

---

- *All Ages and Abilities*
  - A key concept in the plan is a low-stress network comfortable for use by people of all ages and abilities.
- *National Capital Trail Network*
  - The TPB's priority network of long-distance, continuously connected, low-stress facilities for pedestrians and bicyclists  
  
<https://national-capital-trail-network-mwcog.hub.arcgis.com/>
- *E-Micromobility: Scooters and E-bikes*
  - A low-stress network implies a design speed no greater than 20 mph.
- *Access to Transit*
  - Pedestrian and Trail-Oriented Development



# New in 2026

- “Fresh start” 2050 Planned BP Network
- An “Existing Facilities” Layer
- Updated National Capital Trail Network
- Enhanced 2050 bike/ped network interactive dashboard
- Ped/Bike Crash Trends 2017-2025
- New Best Practices reflecting the updated NACTO and AASHTO Bike Design Guides
- Micromobility: New Vehicle Types, Safety & Regulation



E-Motos (Michael Farrell/COG)



# Remaining Tasks for the 2026 Update

## Task 1: Assemble and Analyze Relevant Jurisdictional Data and Plans

- All the States, Counties, and Major Cities, as well as most of the small towns and have uploaded their data into the upload site, or sent PDF's to be digitized.
- Better State and Local Data is available in the current plan update than in previous updates, including existing facility data.
- Toole used a layered approach, defaulting to higher jurisdiction data when local data was not available, and/or using the most recent data.
- Due to the layered nature of the data (multiple agencies even with a County), there was a lot of duplicate data/facilities that needed to be reconciled.

## Task 2: Update and Finalize Chapters of the Plan

- Drafts of Chapters 1 (Overview) and 3 (Safety) are being written by COG staff
- Remaining Chapters will be written by Toole and reviewed by COG.

## Task 3: Development of Presentation and Interactive StoryMap



# What Input Do We Need From You?

---

- Jurisdictional planners have been very helpful in assembling an updated dataset and mapping for the region's trails and low-stress network.
- Deadlines for data submission have passed but we will do our best to integrate any additional comments or corrections to the network.
- Are there any other regional priorities for bike/ped planning that should be highlighted in the plan?



# Next Steps

---

- Complete the draft plan and network map by mid-August
- Brief Tech Committee and TPB in September



## Michael Farrell

Senior Transportation Planner

(202) 962-3760

[mfarrell@mwkog.org](mailto:mfarrell@mwkog.org)

[mwkog.org/tpb](http://mwkog.org/tpb)

---

Metropolitan Washington Council of Governments

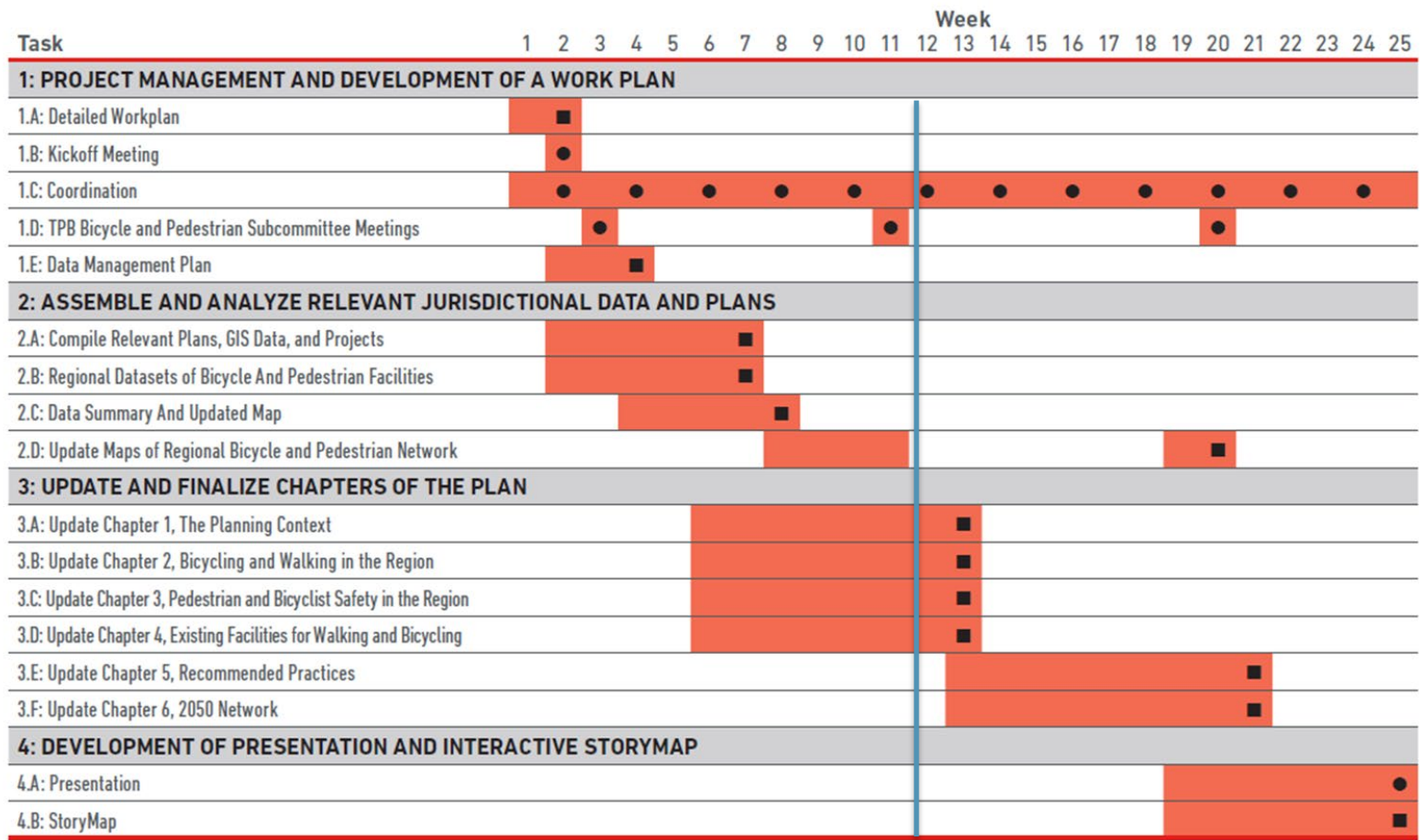
777 North Capitol Street NE, Suite 300

Washington, DC 20002



National Capital Region  
**Transportation Planning Board**

# Task and Schedule Chart



\* Data gathering and clean up took longer than anticipated. Once the Network is defined the text can be completed fairly quickly.

↑  
We are here\*