

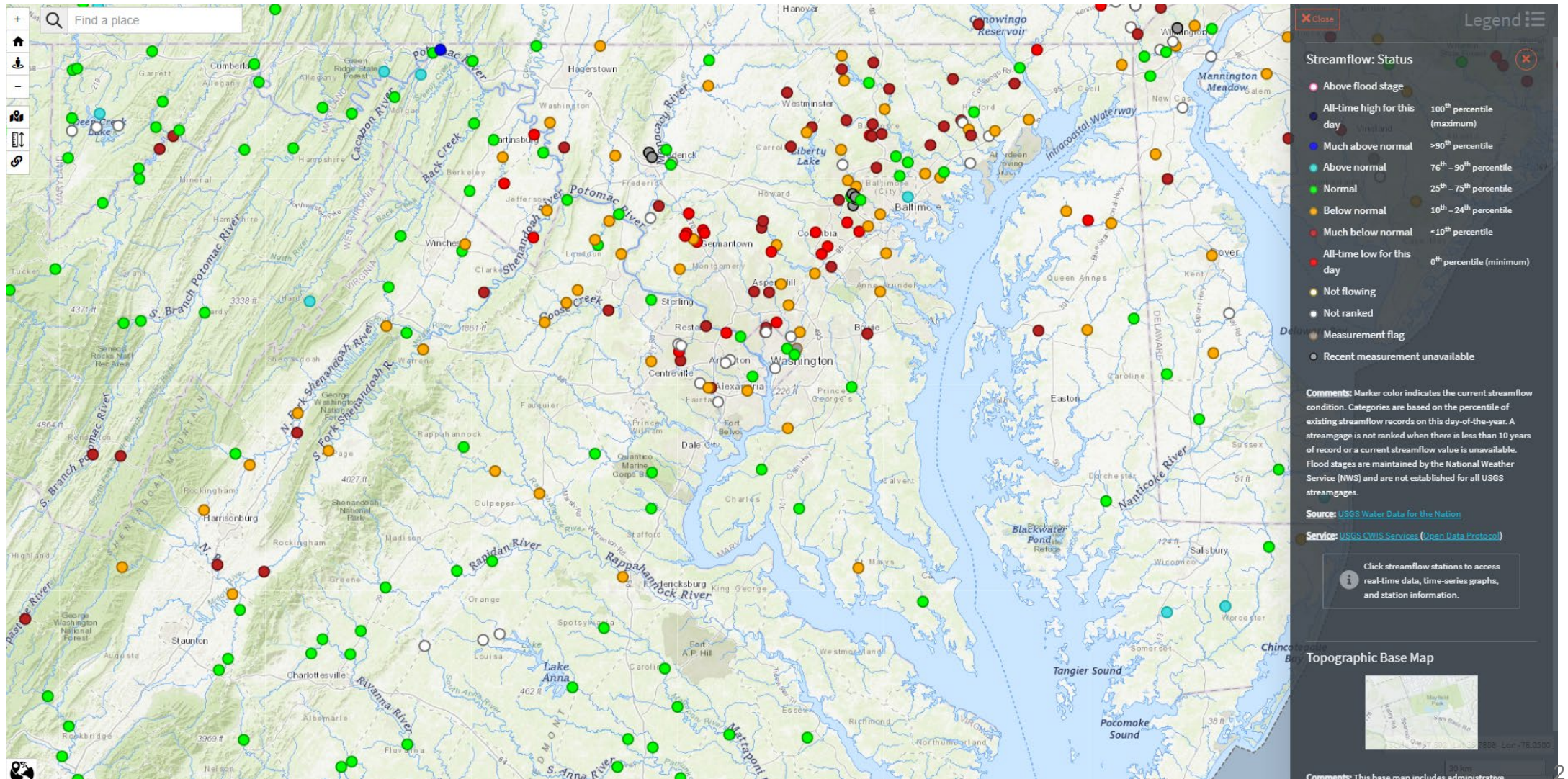
# Streamflow and Groundwater Conditions

Chuck Walker

USGS MD-DE-DC Water Science Center

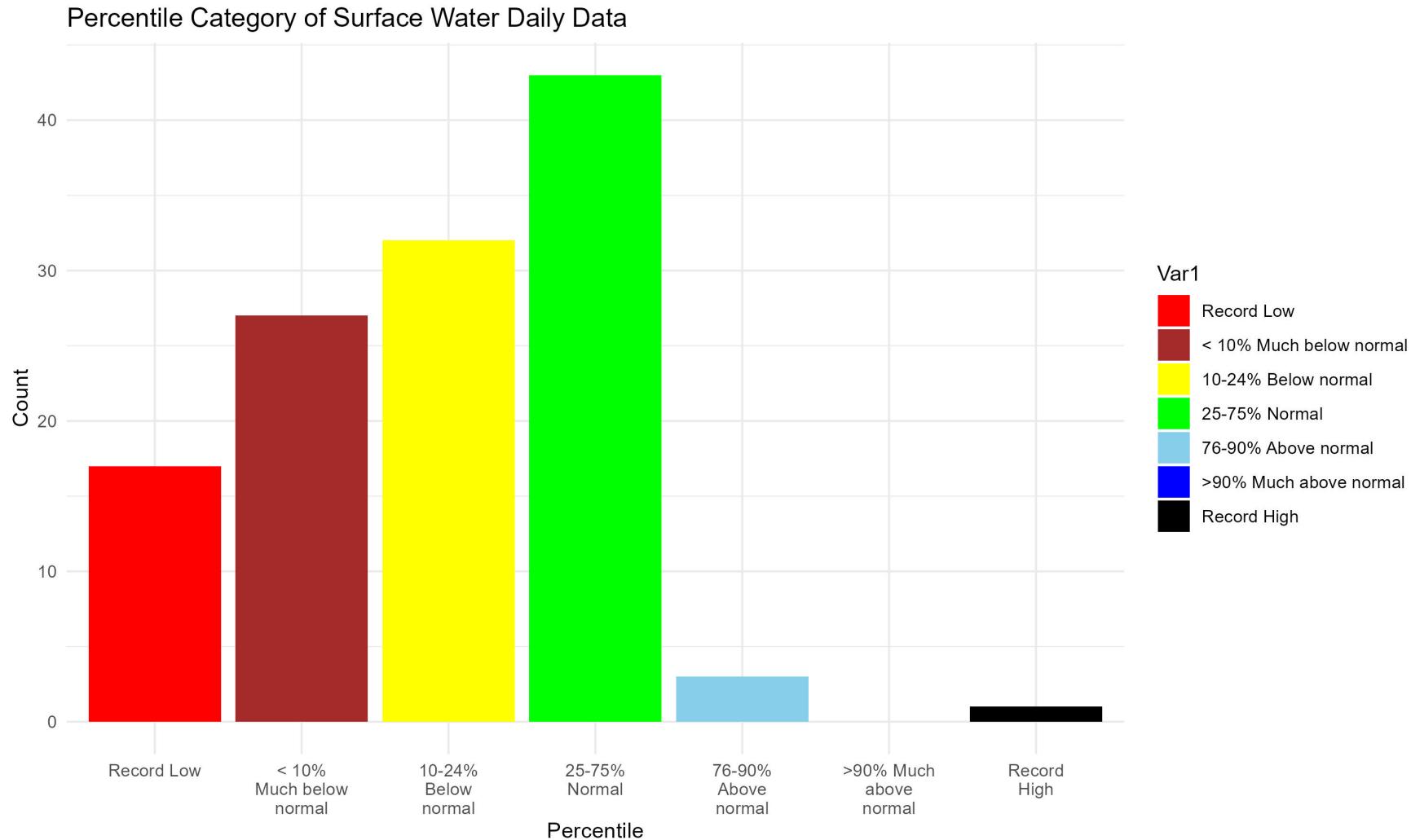
Data in this presentation may be provisional and is subject to change

# Current Streamflow Percentiles



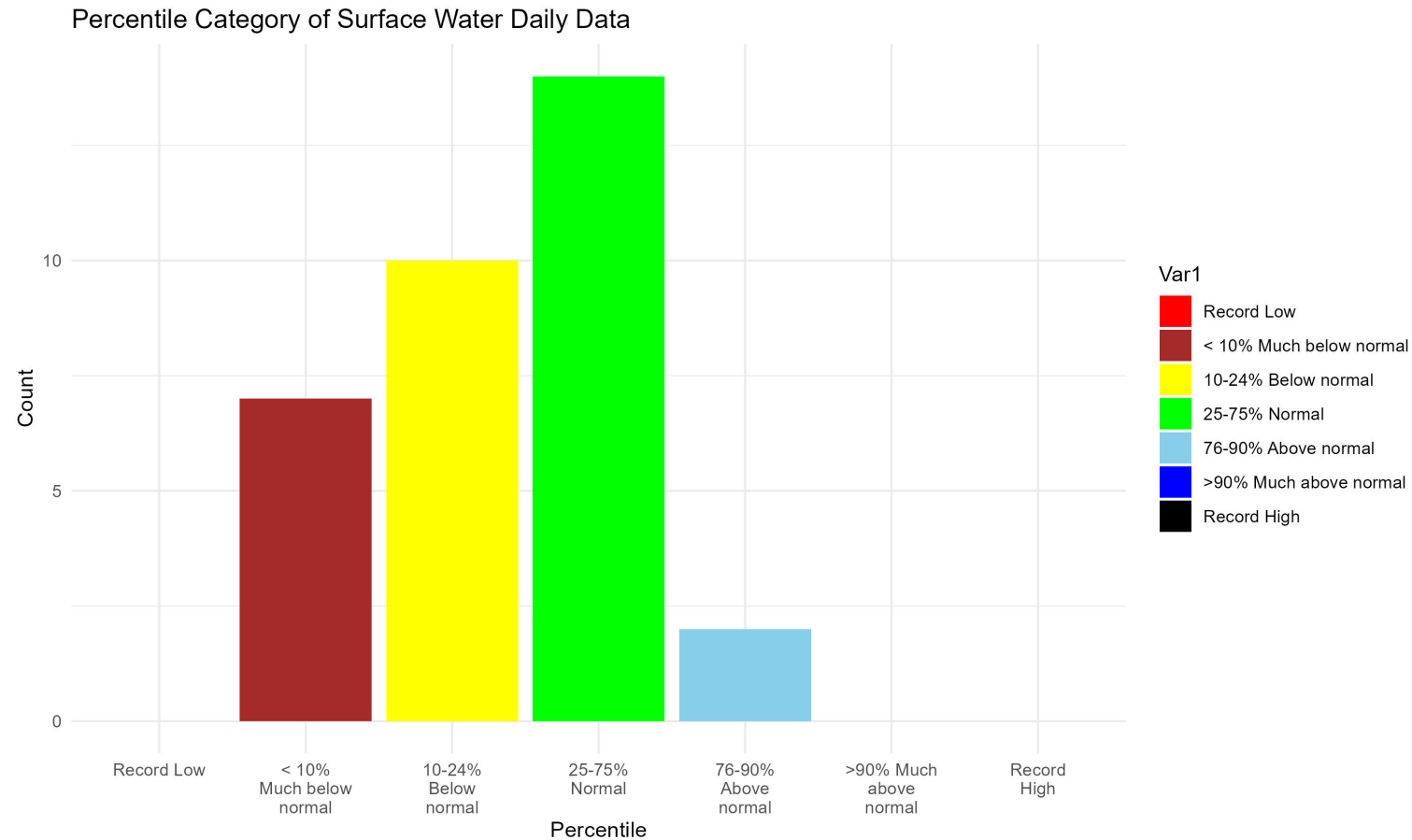
Data in this slide may be provisional and is subject to change

# Percentile Distribution (Streamflow) as of 4/10/2025 for all MD stage/discharge gages

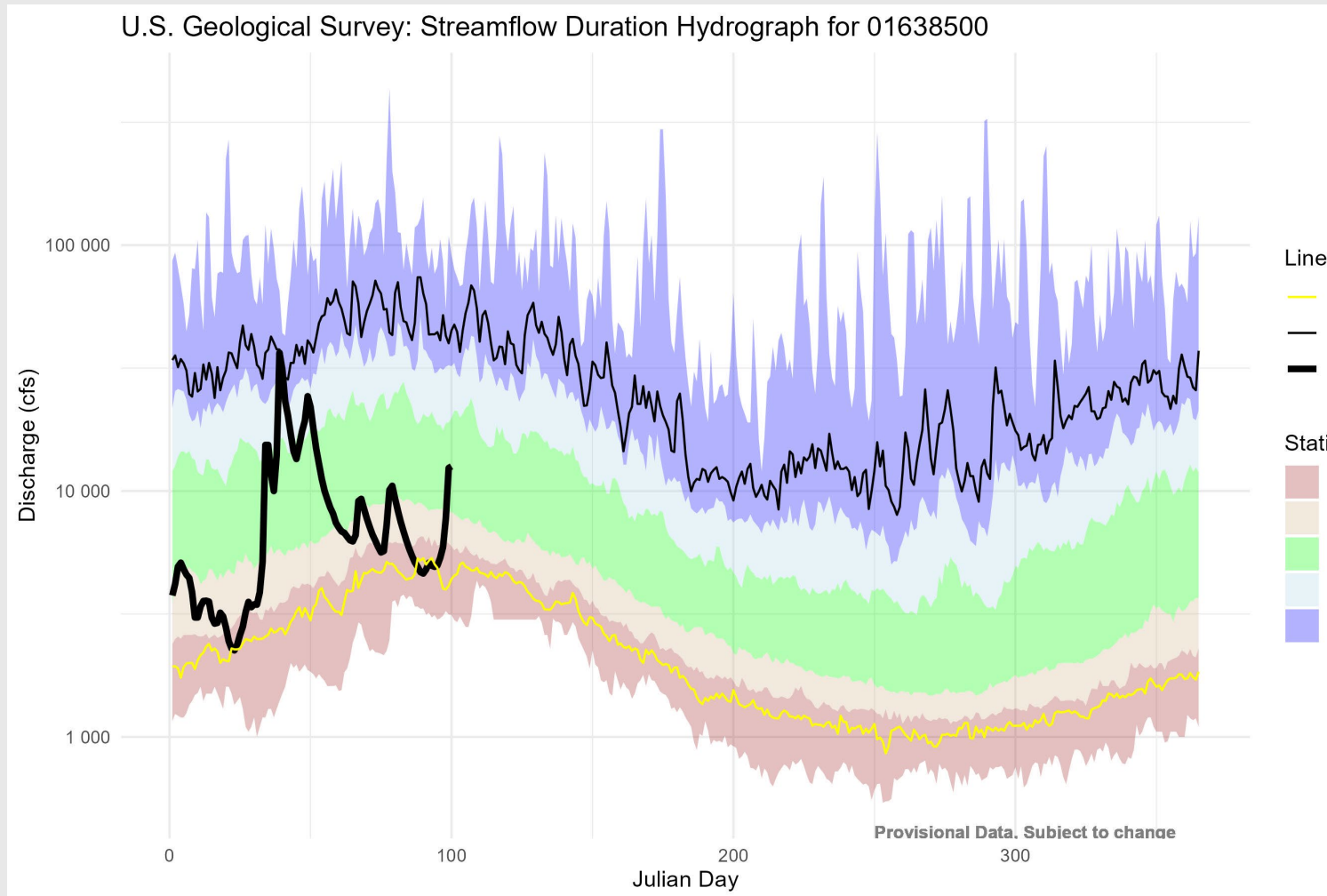


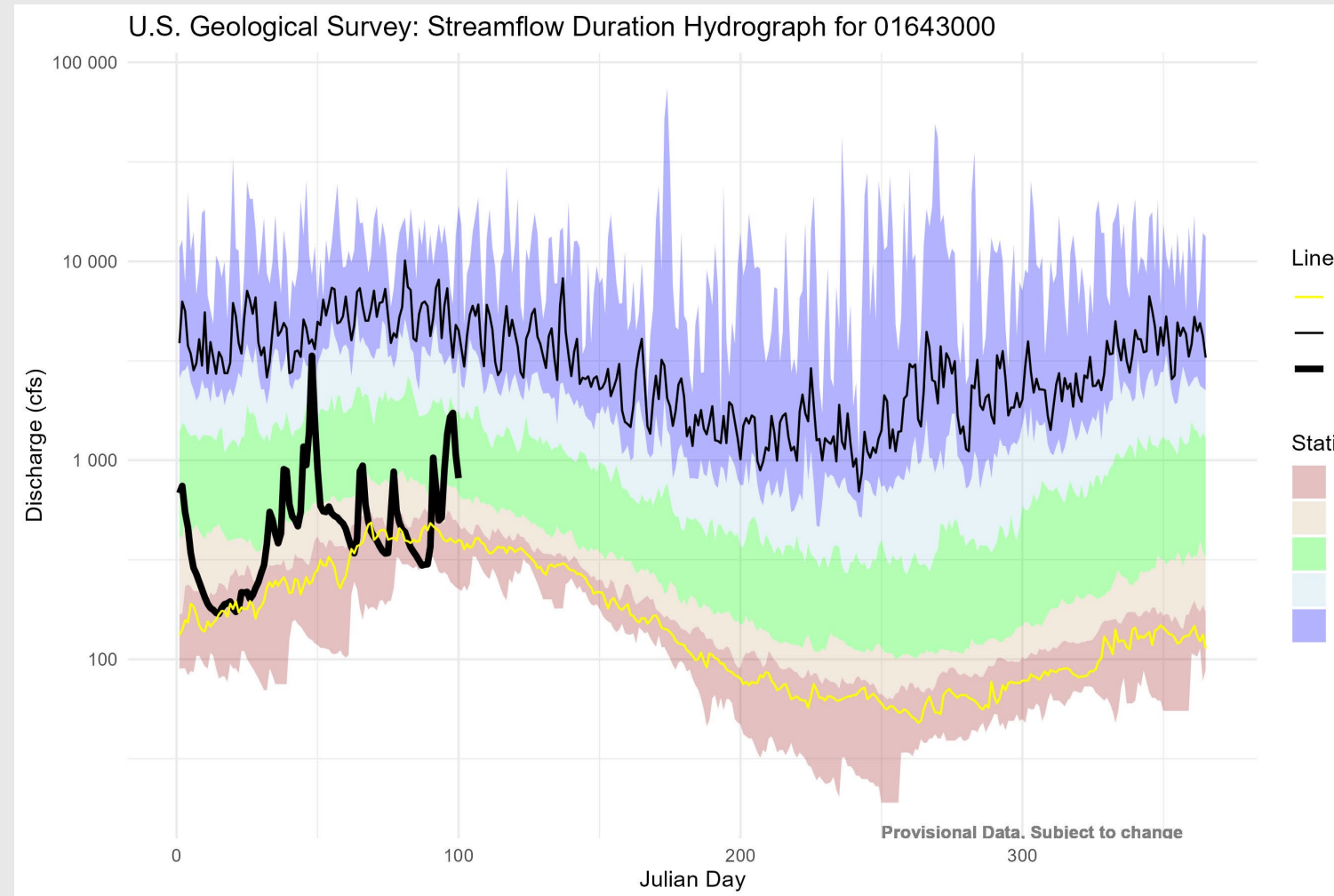
Data in this slide may be provisional and is subject to change

## Streamflow Percentiles (daily data) from 04-10-2025 from gages with longer period of record.



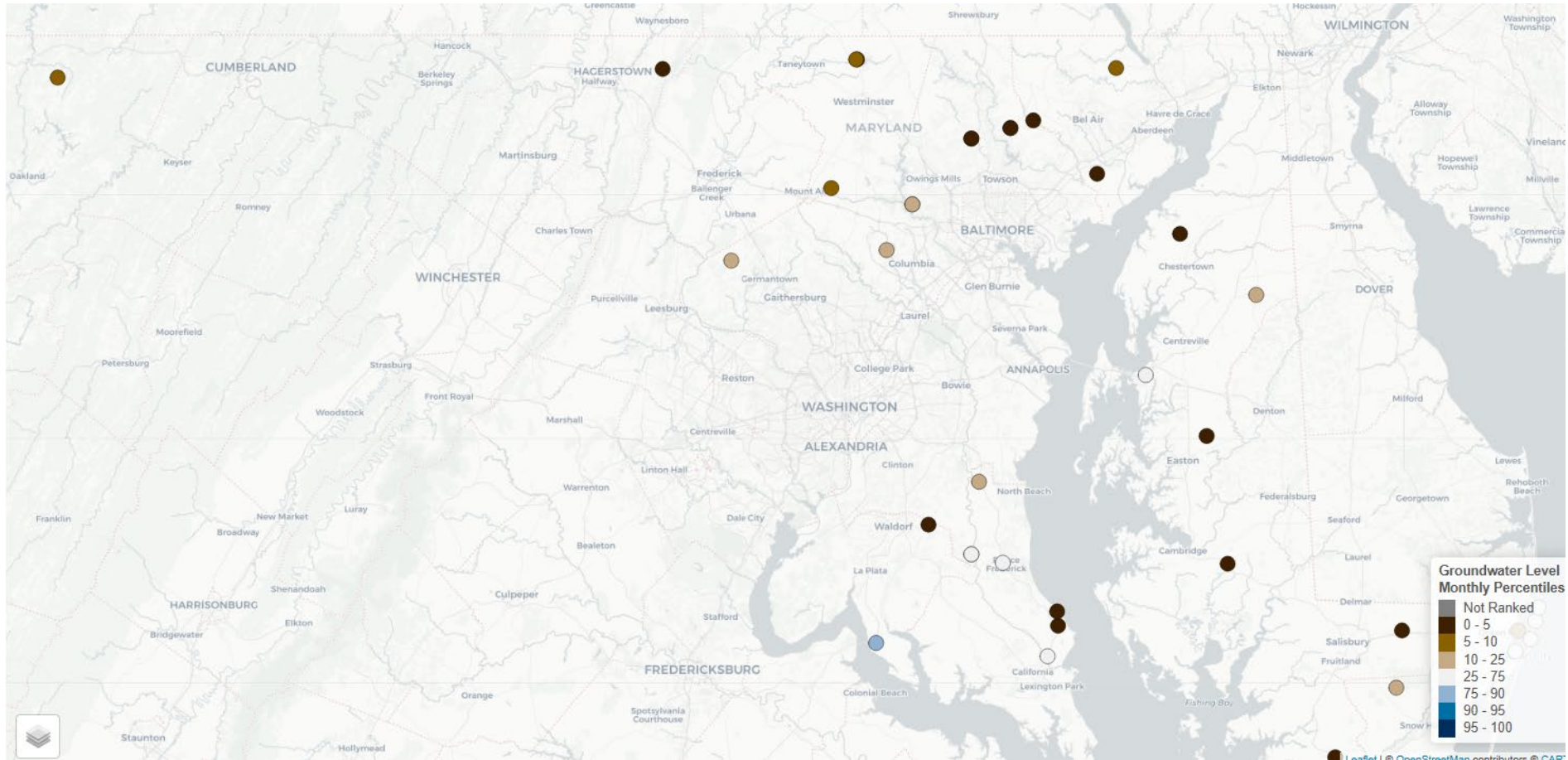
# Streamflow Duration for Point of Rocks (01638500)





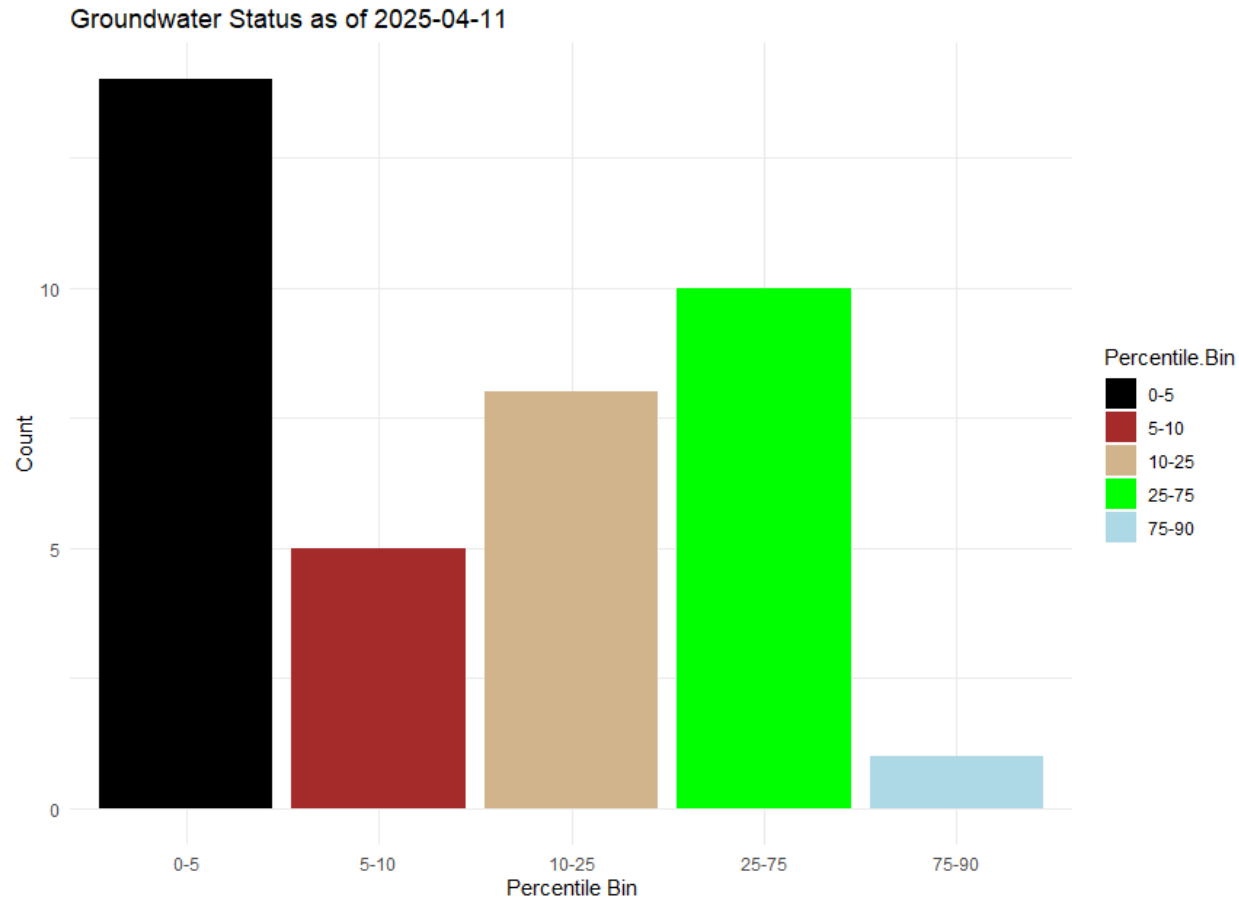
# Streamflow Duration Hydrograph for Monocacy at Jug Bridge Near Frederick

# Groundwater Level Measurements (Within the last month)

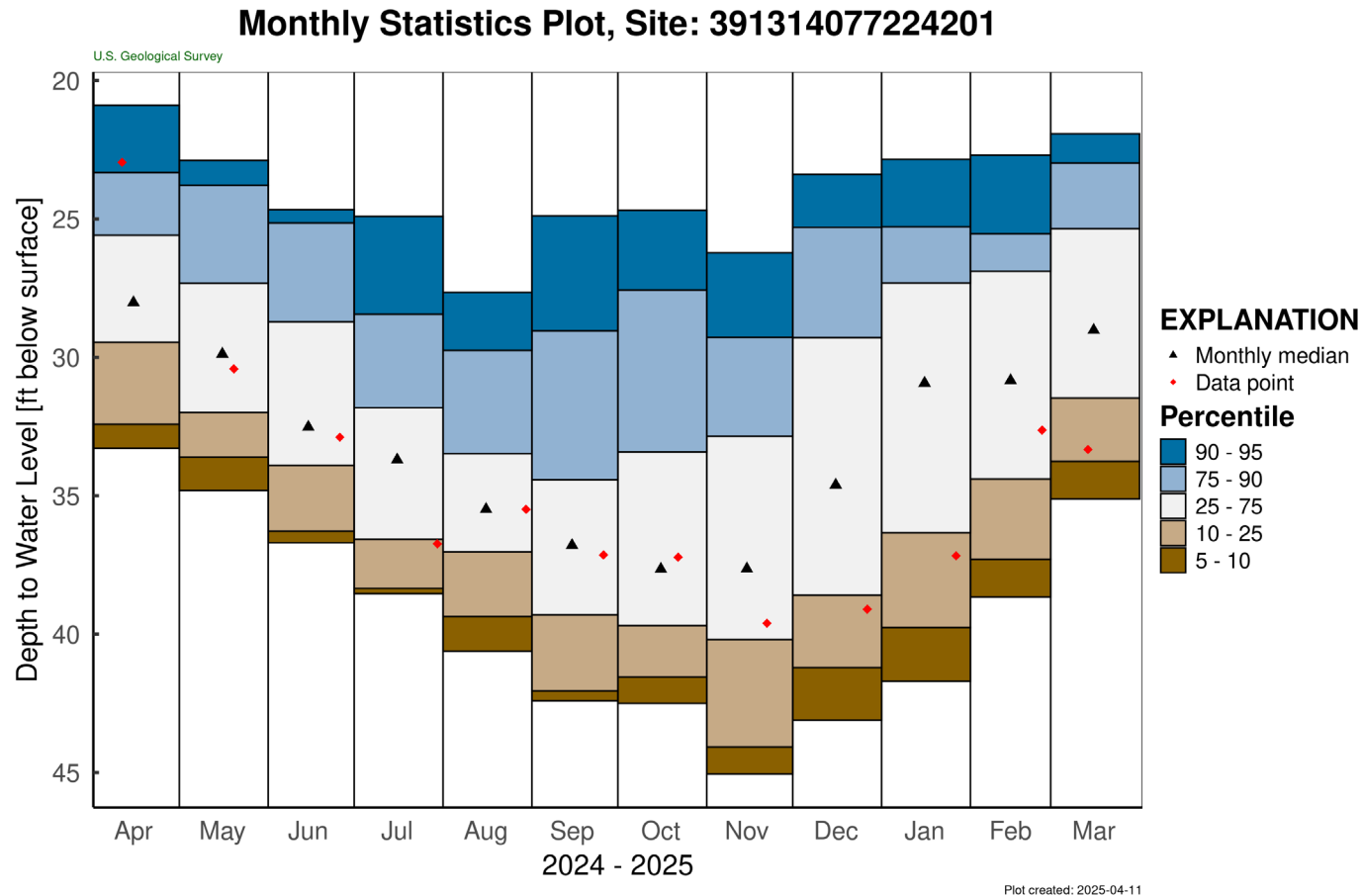


Data in this slide may be provisional and is subject to change

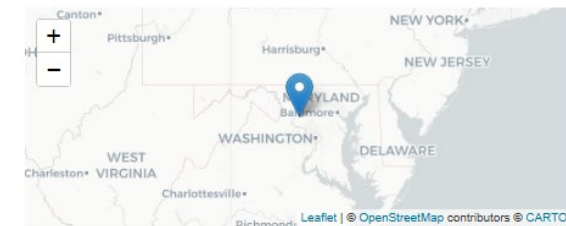
# Percentile distribution (Groundwater)



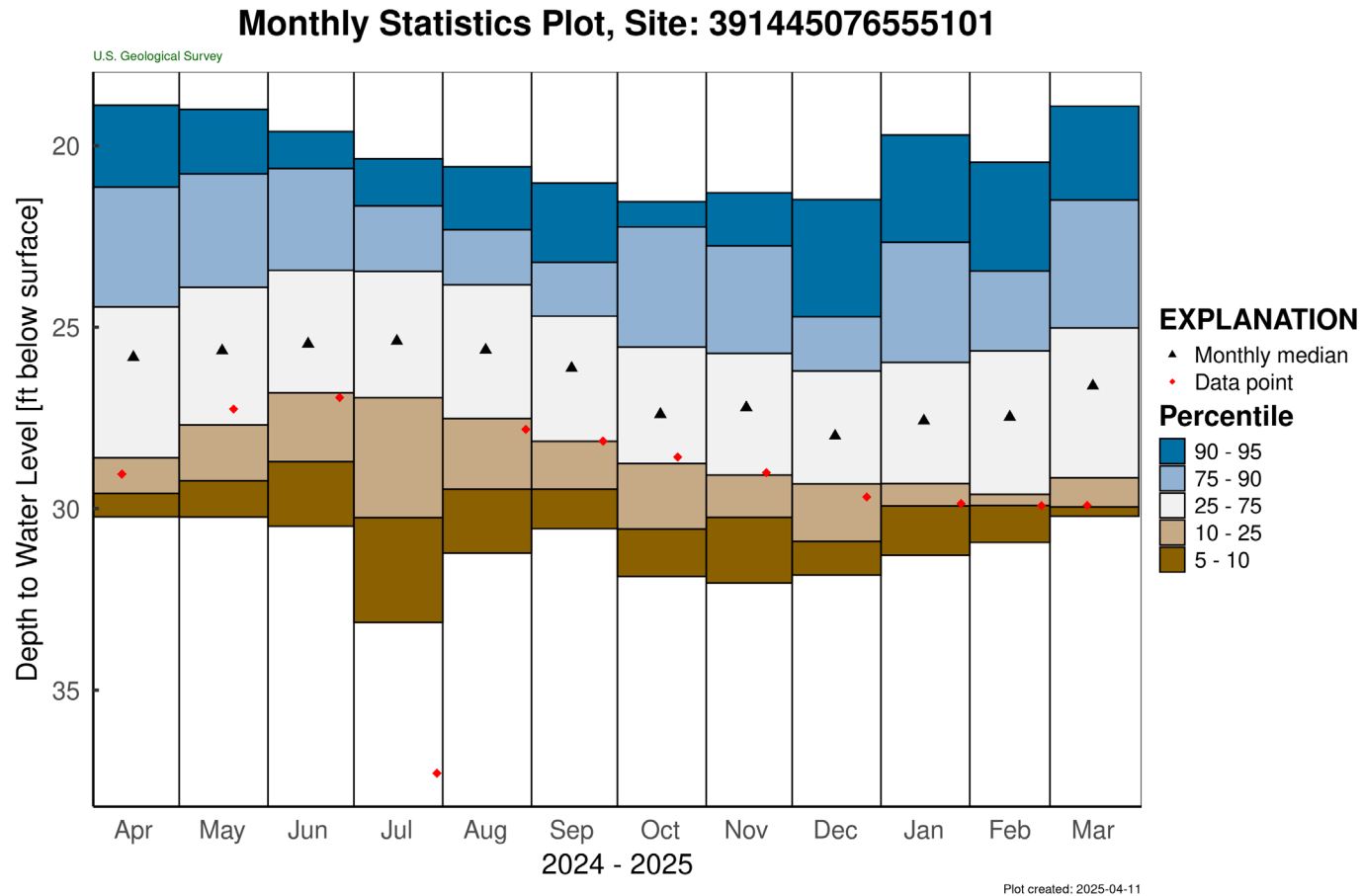
# MO Cc 14 Well in Montgomery County



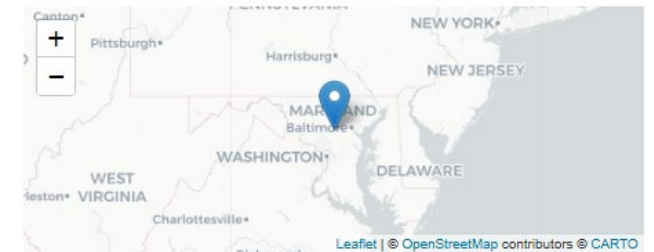
Site 391314077224201 Information



# HO Cd 79 Well in Howard County



## Site 391445076555101 Information



# Where to find USGS Data

- [USGS | National Water Dashboard](#)
- <https://rconnect.usgs.gov/gwapp/>
- [USGS WaterAlert](#)