

Service Coordination for Seniors Program Update

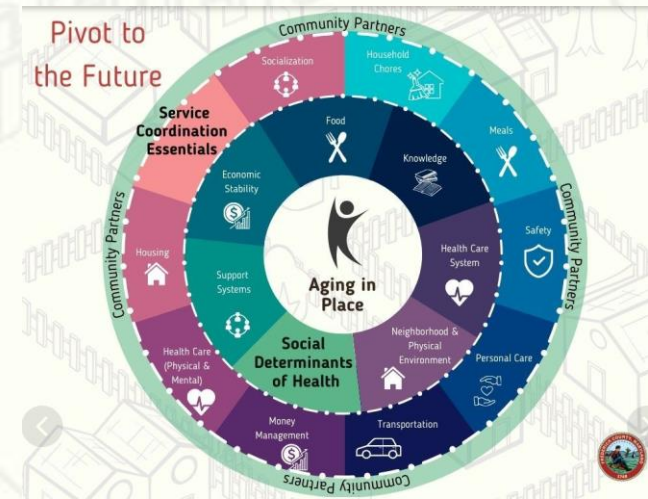
Service Coordination Program Vision

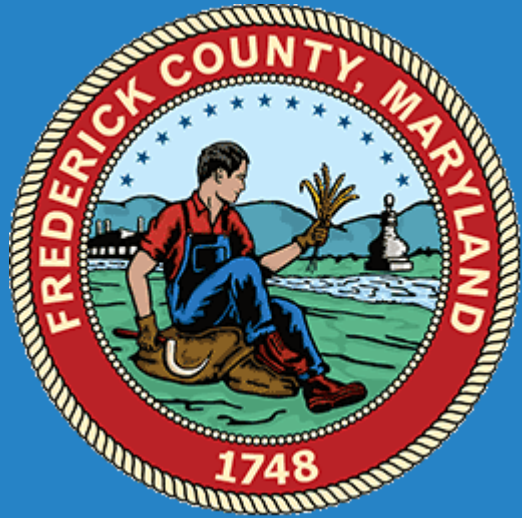
Mission Statement:

The mission of the Frederick County Service Coordination Program is to help low-income seniors in Frederick County remain in their home through community-based service coordination.

What Is Service Coordination:

Service Coordination is based on a model that supports seniors in accessing services necessary to remain in their homes, whether owned or rented, for as long as possible with dignity and self-determination. Service Coordination also facilitates collaboration between community resources to better address the needs of our seniors, reduce duplication of services and maximize the value of funding sources.





First Year Executive Summary of Service Coordination for Seniors Program

- Five total full-time staff working in the program.
- Serving individuals using “What Matters Most” principle.
- 219 individuals served as of March 31, 2025.
- 16,373 total services during that time.
- When drilling down, this equates to 2 services/week/client.
- Or, an average of 75 services per person.
- Greatest needs center around affordable housing, economic stability, transportation, and food supports.



Economic Stability

Medicare Subsidy Programs
Property Tax Credits
Senior Tax Credit
Veterans Property Tax Credit
Caregiver Respite Subsidy
Prescription Drug Assistance
Employment Opportunities For Adults With Disabilities



Community & Social Context

Caregiver Support Group
Adult Public Guardianship Review Board
Elder Abuse Prevention & Awareness
Senior Services Advisory Board
Veterans Advisory Council
Commission on Disabilities
Senior Centers
(In-Person & Virtual Classes & Activities)



Health Care System

Maryland Access Point
Health Promotion & Disease Prevention Programs
Community Options Waiver
Level 1 – Eligibility Screening Tool
Hospital To Home Transitions
Senior Care
(In-Home Care, Chore Services)
Medicare Education & Enrollment



Neighborhood & Physical Environment

Ombudsman Services
Guardianship Services
Third Party Notification Program
Housing Consultation & Referrals
Transportation Referrals
Long Term Care/Assisted Living Referrals



Food

Meals On Wheels
Home Delivered Meals
Groceries For Seniors
Emergency Food Support
Nutrition Education



Education

Property Tax Credit Education
Dementia Friendly Frederick
Powerful Tools For Caregivers
Scam/Fraud Education
Stroke Smart Education
Host Institute For Learning In Retirement Classes
Employment Training For Adults With Disabilities





Economic Stability

4,778 Related Services

48% of participants live below the FPL



Community & Social Context

Caregiver Support Group
Adult Public Guardianship Review Board
Elder Abuse Prevention & Awareness
Senior Services Advisory Board
Veterans Advisory Council
Commission on Disabilities
Senior Centers
(In-Person & Virtual Classes & Activities)



Health Care System

Maryland Access Point
Health Promotion & Disease Prevention Programs
Community Options Waiver
Level 1 – Eligibility Screening Tool
Hospital To Home Transitions
Senior Care
(In-Home Care, Chore Services)
Medicare Education & Enrollment



Neighborhood & Physical Environment

Ombudsman Services
Guardianship Services
Third Party Notification Program
Housing Consultation & Referrals
Transportation Referrals
Long Term Care/Assisted Living Referrals



Food

Meals On Wheels
Home Delivered Meals
Groceries For Seniors
Emergency Food Support
Nutrition Education



Education

Property Tax Credit Education
Dementia Friendly Frederick
Powerful Tools For Caregivers
Scam/Fraud Education
Stroke Smart Education
Host Institute For Learning In Retirement Classes
Employment Training For Adults With Disabilities





Economic Stability

4,778 Related Services

48% of participants live below the FPL



Community & Social Context

4,193 Related Services

73% of individuals served live alone



Health Care System

Maryland Access Point
Health Promotion & Disease Prevention Programs
Community Options Waiver
Level 1 – Eligibility Screening Tool
Hospital To Home Transitions
Senior Care (In-Home Care, Chore Services)
Medicare Education & Enrollment



Neighborhood & Physical Environment

Ombudsman Services
Guardianship Services
Third Party Notification Program
Housing Consultation & Referrals
Transportation Referrals
Long Term Care/Assisted Living Referrals



Food

Meals On Wheels
Home Delivered Meals
Groceries For Seniors
Emergency Food Support
Nutrition Education



Education

Property Tax Credit Education
Dementia Friendly Frederick
Powerful Tools For Caregivers
Scam/Fraud Education
Stroke Smart Education
Host Institute For Learning In Retirement Classes
Employment Training For Adults With Disabilities





Economic Stability

4,778 Related Services

48% of participants live below the FPL



Community & Social Context

4,193 Related Services

73% of individuals served live alone



Health Care System

2,216 Related Services

High healthcare service usage underscores ongoing chronic conditions and the need for accessible medical care



Neighborhood & Physical Environment

Ombudsman Services
Guardianship Services
Third Party Notification Program
Housing Consultation & Referrals
Transportation Referrals
Long Term Care/Assisted Living Referrals



Food

Meals On Wheels
Home Delivered Meals
Groceries For Seniors
Emergency Food Support
Nutrition Education



Education

Property Tax Credit Education
Dementia Friendly Frederick
Powerful Tools For Caregivers
Scam/Fraud Education
Stroke Smart Education
Host Institute For Learning In Retirement Classes
Employment Training For Adults With Disabilities




Having Physical & Mental Health Issues Addressed!



Economic Stability

4,778 Related Services

48% of participants live below the FPL



Community & Social Context

4,193 Related Services

73% of individuals served live alone



Health Care System

2,216 Related Services


High healthcare service usage underscores ongoing chronic conditions and the need for accessible medical care



Neighborhood & Physical Environment

1,807 Related Services

Less than 15% of individuals served own their own home



Food

Meals On Wheels
Home Delivered Meals
Groceries For Seniors
Emergency Food Support
Nutrition Education



Education

Property Tax Credit Education
Dementia Friendly Frederick
Powerful Tools For Caregivers
Scam/Fraud Education
Stroke Smart Education
Host Institute For Learning In Retirement Classes
Employment Training For Adults With Disabilities





Economic Stability

4,778 Related Services

48% of participants live below the FPL



Community & Social Context

4,193 Related Services

73% of individuals served live alone



Health Care System

2,216 Related Services

High healthcare service usage underscores ongoing chronic conditions and the need for accessible medical care



Neighborhood & Physical Environment

1,807 Related Services

Less than 15% of individuals served own their own home



Food

1,591 Related Services

86% of participants scored as most vulnerable



Education

Property Tax Credit Education
Dementia Friendly Frederick
Powerful Tools For Caregivers
Scam/Fraud Education
Stroke Smart Education
Host Institute For Learning In Retirement Classes
Employment Training For Adults With Disabilities



Providing Appropriate Type of Nutritional Supports!



Economic Stability

4,778 Related Services

48% of participants live below the FPL



Community & Social Context

4,193 Related Services

73% of individuals served live alone



Health Care System

2,216 Related Services

High healthcare service usage underscores ongoing chronic conditions and the need for accessible medical care



Neighborhood & Physical Environment

1,807 Related Services

Less than 15% of individuals served own their own home



Food

1,591 Related Services

86% of participants scored as most vulnerable

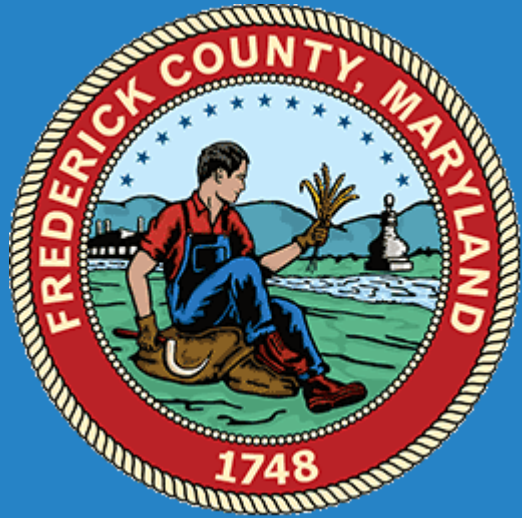


Education

1,788 Related Services

Over 54% of participants served are age 75+





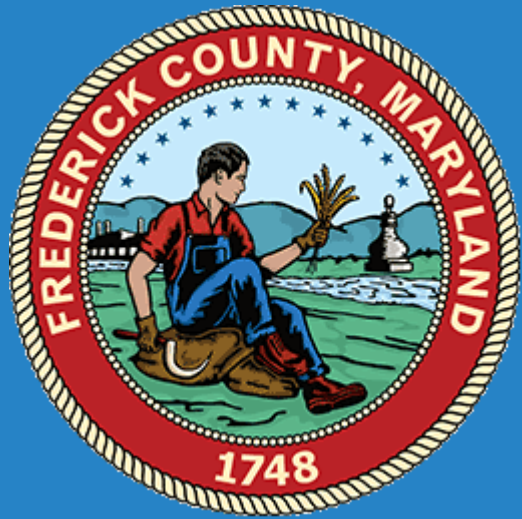
Future Plans and Growth Opportunities

➤ Largest Obstacles:

- Housing Affordability
- Economic Stability
- Transportation
- Food Support
- Measuring Success of Program

➤ Growth Opportunities:

- Additional expansion of staff
- Continue to connect to all areas of County
- Move mobile
- Looking for additional funding opportunities outside of County funding to support the program



Thank You!

Thanks to County Executive Fitzwater, our partner agencies, and the amazing staff working with constituents daily.

- Five total full-time staff working in the program.
- Serving individuals using “What Matters Most” principle.
- 219 individuals served as of March 31, 2025.
- 16,373 total services during that time.
- When drilling down, this equates to 2 services/week/client.
- Or, an average of 75 services per person.
- Greatest needs center around affordable housing, economic stability, transportation, and food supports.