



Update on the ActiveFairfax Transportation Plan

TPB BICYCLE AND PEDESTRIAN SUBCOMMITTEE

Fairfax County Department of Transportation

January 20, 2026

Agenda

1. Definition
2. Vision
3. Project Goals
4. Project Timeline
5. Community Engagement
6. Active Transportation and Trails Plan
7. Active Transportation Toolkit
8. Next Steps



Defining Active Transportation

Active Transportation includes all forms of **non-motorized travel for recreational purposes** or to get from A to B.

The definition includes electric micromobility vehicles such as electric scooters, bikes and skateboards.



Key Goals

01

Streamline
Comprehensive Plan
guidance on AT
(currently provides
conflicting
recommendations)

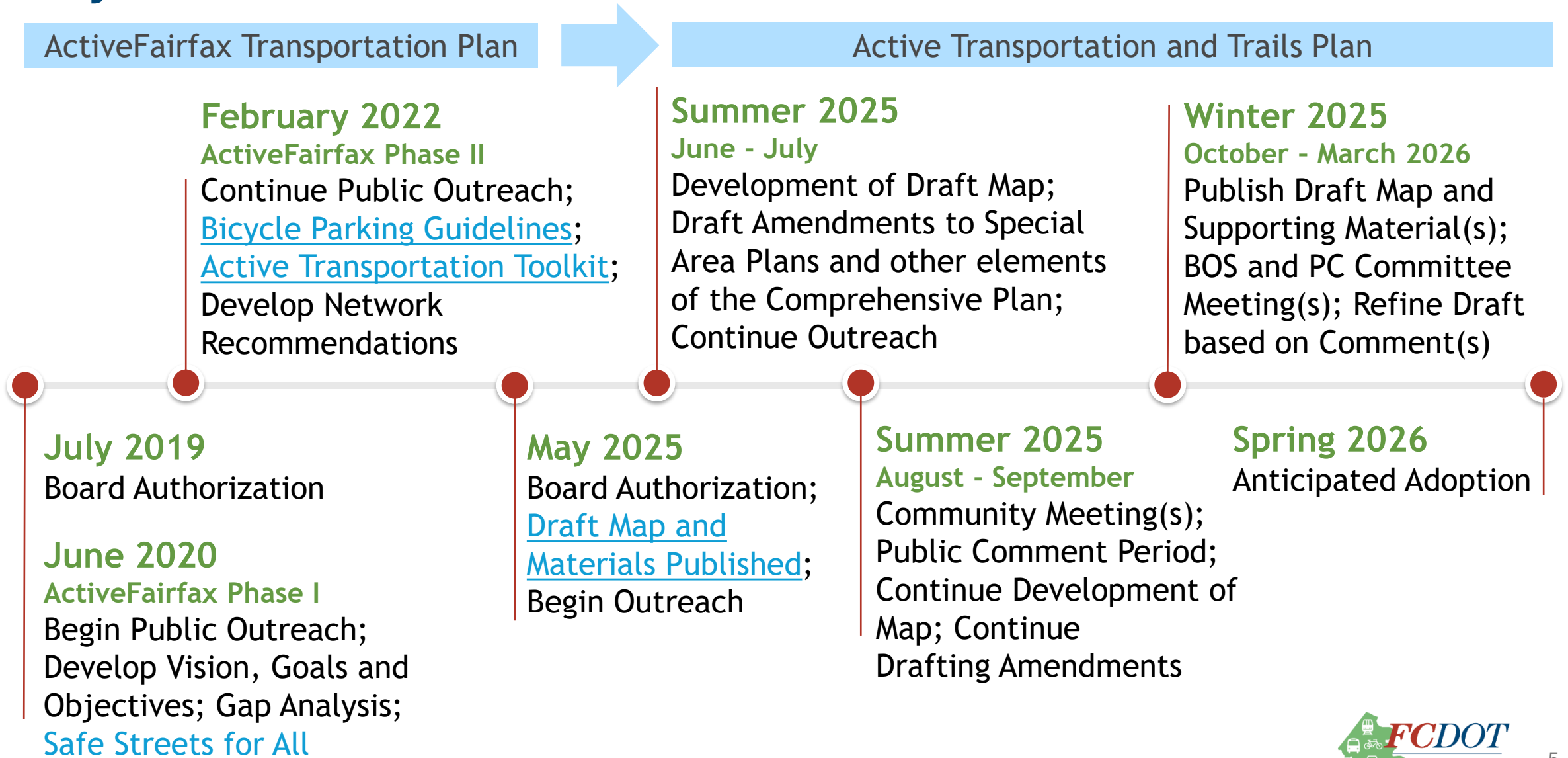
02

Fill gaps in the
planned network and
mitigate potential
impacts on natural
or cultural resources

03

Update facility types
and design
recommendations to
reflect current best
practices, national
and state standards

Project Timeline



Community Engagement

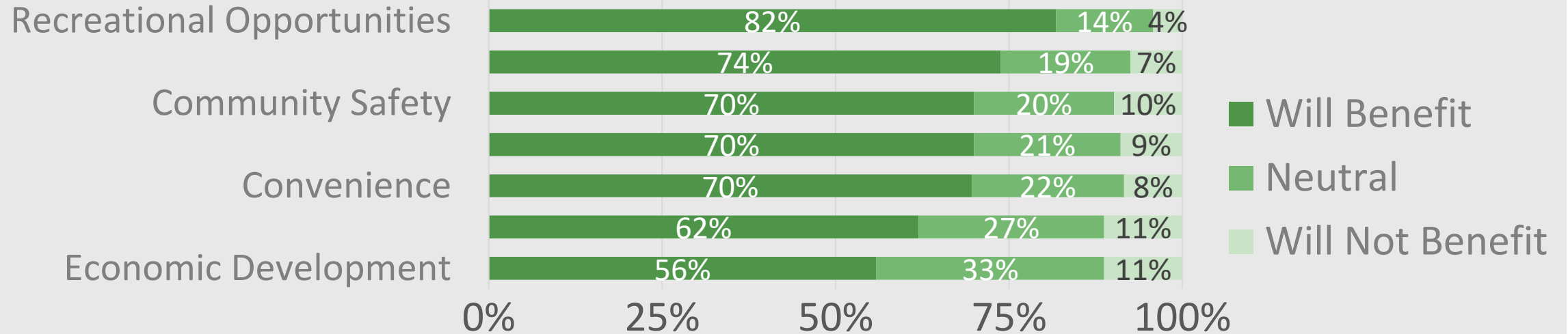
- 3 public engagement periods (2021, 2024 and 2025)
- Public surveys (online and in person)
- Virtual community meetings
- In-Person Community Open Houses in Title 1 elementary schools
- Pop up engagement along trails, at Farmers Markets, and community events
- Social media posts and ads on Fairfax Connector fleet, Facebook, and LinkedIn
- Flyers posted in community centers, libraries, and parks

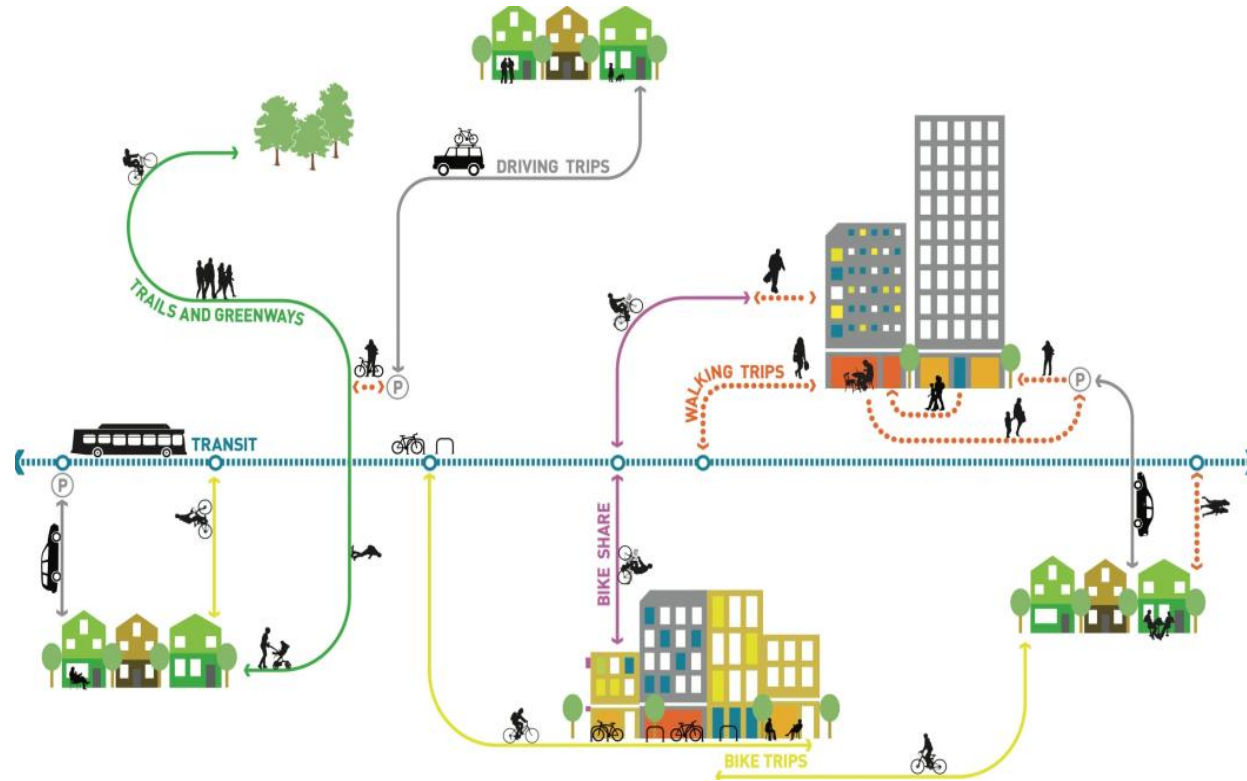


Key Takeaway from Public Review

- Preference for separated facilities that minimize interaction with traffic
- Concern about speeding, distracted driving, traffic enforcement and maintenance
- Anticipate community benefits across various categories

Perceived Benefits of ActiveFairfax Draft Network





Active Transportation and Trails Plan

Highlights

- Aspirational all ages and abilities active transportation and trails network
 - Overinclusive to anticipate community needs beyond 20 years
- Menu of facility and amenity options
 - Provides flexibility at implementation while maintaining user comfort
- Interim implementation of bike lanes and/or other feasible improvements
- Additional guidance on pedestrian facilities and crossings

Overview

Plan Title and Introduction



Main Facility Selection Recommendations



Guidance on Alternative Facilities



Map Legend and Notes

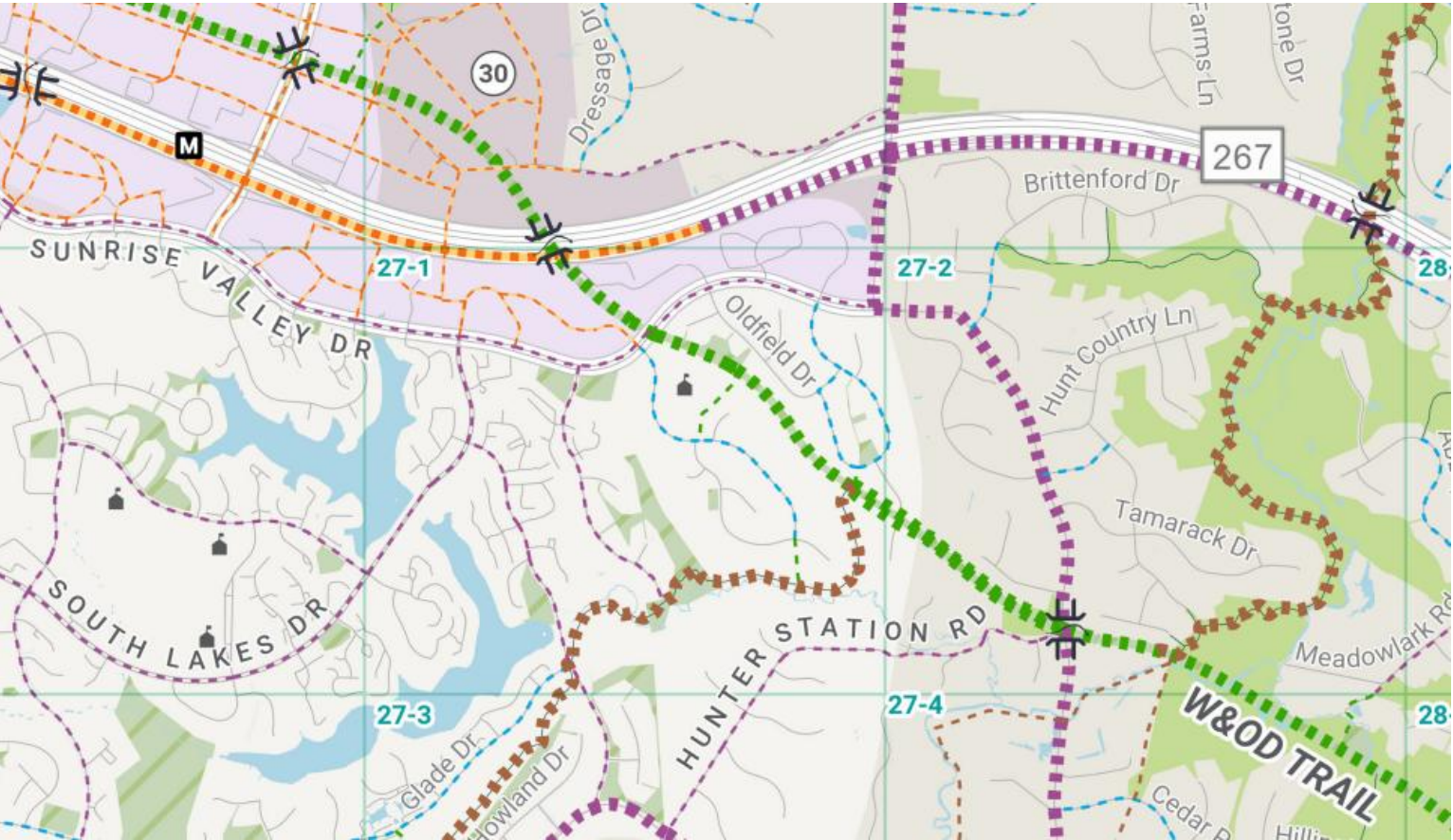


Special Planning Area Key

Crossing Spacing Guidance



Active Transportation Network Symbolology



Legend

Countywide Trail Network*

- Trails Along Road in Special Planning Area
- Trail(s) Along Other Road
- Trail Through Open Space**
- Stream Valley Trail**

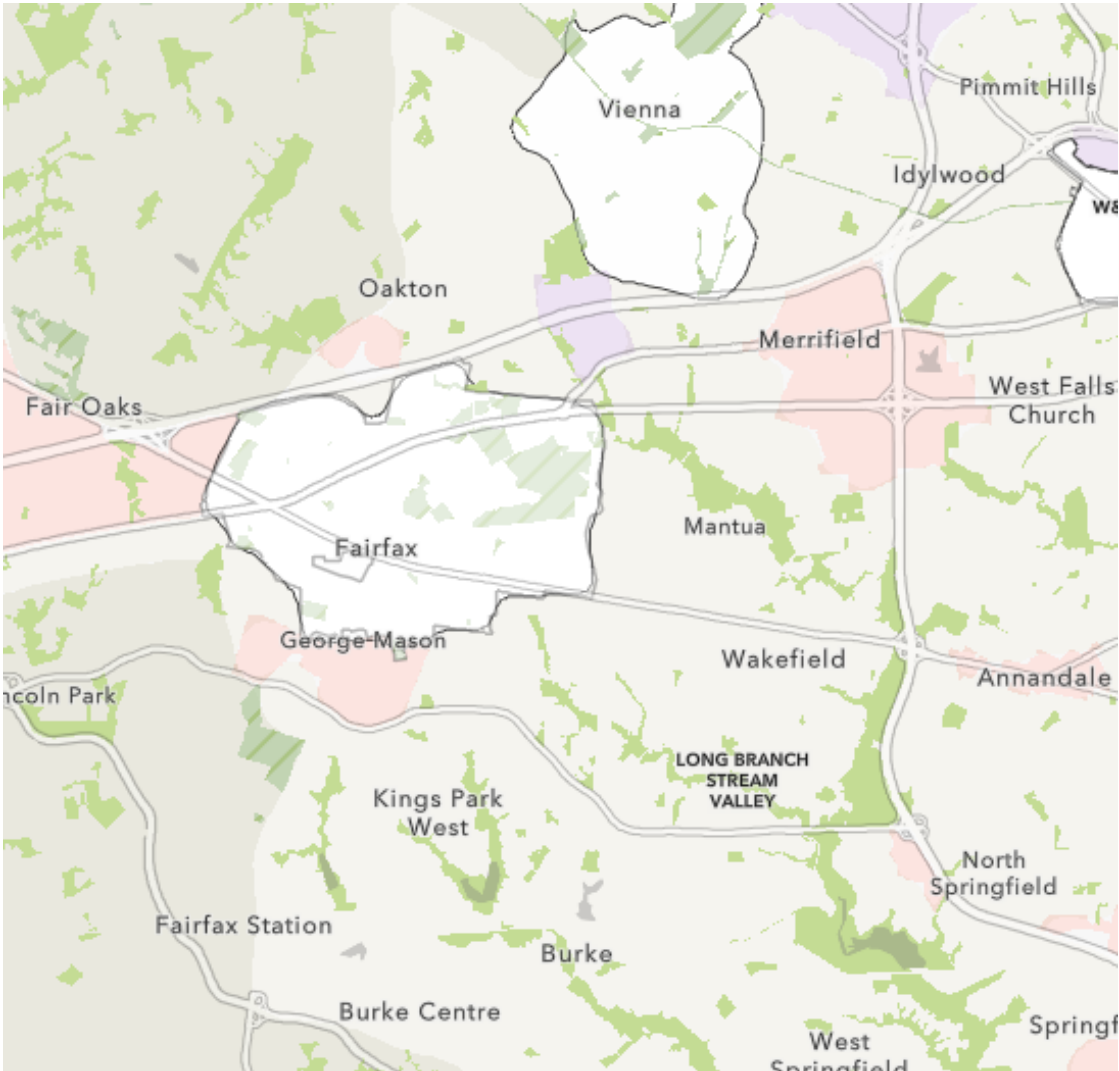
* Line thickness indicates network function; regional and local trail routes are indicated by bolded and non-bolded line thickness respectively. Regional hard-surface multi-use facilities are part of the Capital Trails Network.
**Locations are approximate; feasibility, facility type, alignment, width and surface type are to be determined.

Other Key Active Transportation Routes

- Neighborhood Connectors

Parks and Land Use

Four (4) land use tiers by density, based on the County’s Concept of Future Development



- Park land maintained by Fairfax County Park Authority*
- Park land maintained by National Park Service*
- Park land maintained by other agency (Commonwealth of Virginia, local municipality or NOVA Parks)*
- Water

*See park-specific master plan for more details.

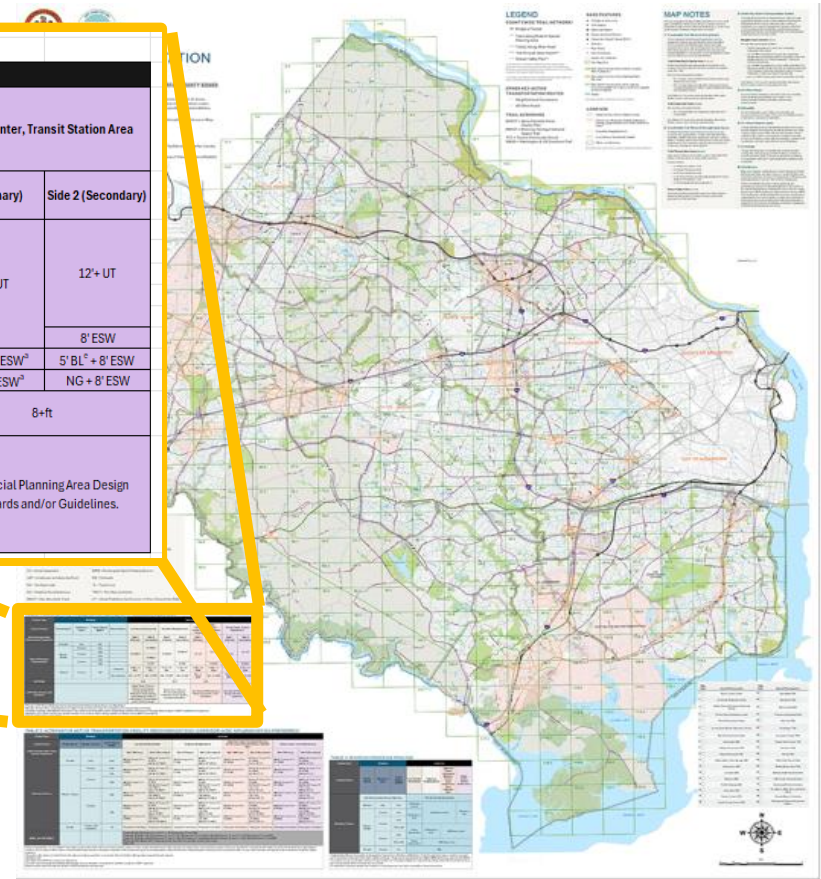
LAND USE

- Urban Center, Transit Station Area*
- Community Business Center, Suburban Center, Large Institutional Area*
- Suburban Neighborhood, Industrial Area*
- Low Density Residential Areas*
- Other Jurisdictions

*See applicable Special Area plan for detailed recommendations.

Facility Selection Tables

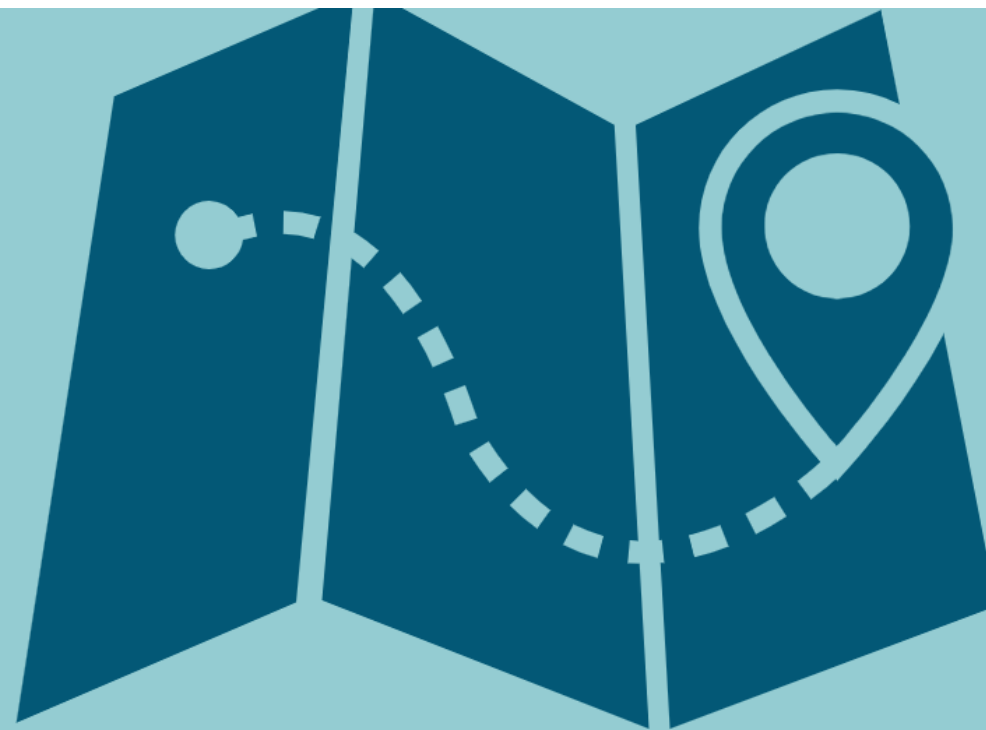
Table 1: Main Active Transportation Facility Recommendations																
Context Type		Roadway				Land Use										
Context Factors		Posted Speed	Number of Lanes ^b	Traffic Volume (AADT)	Other Features	Low Density Residential		Suburban Neighborhood		Suburban Center, Community Business Center, Large Institutional Area, Industrial Area		Urban Center, Transit Station Area				
Active Transportation Cross Section Component						Side 1 (Primary)	Side 2 (Secondary)	Side 1 (Primary)	Side 2 (Secondary)	Side 1 (Primary)	Side 2 (Secondary)	Side 1 (Primary)	Side 2 (Secondary)			
Planned Roadway Characteristics	40+mph ^d	Any	Any		10' PMUT	10' PMUT	10' PMUT	10' PMUT	10'+ UT	10'+ UT	12'+ UT	12'+ UT				
	25mph - 35mph	6 Lanes ^c	Any										8' PMUT	6' SW	8' ESW	
		4 Lanes ^c	≥12k													8' ESW
			<12k													
	2 Lanes ^c	≥12k		8' ESW												
		<12k														
	<25mph ^f	2 Lanes	<3k ^d	Centerline	5' BL ^e + 6' PPT ^g	5' BL ^e + 6' PPT	5' BL ^e + 6' SW ^h	5' BL ^e + 6' SW	5' BL ^e + 6' ESW ^h	5' BL ^e + 6' ESW	5' BL ^e + 8' ESW ^h	5' BL ^e + 8' ESW				
			No centerline	NG + 6' PPT ^g	NG + 6' PPT	NG + 6' SW ^h	NG + 6' SW	NG + 6' ESW ^h	NG + 6' ESW	NG + 8' ESW ^h	NG + 8' ESW					
LAP Width						8+ft		8+ft		8+ft		8+ft				
LAP Enhancements and Amenities						Street Trees, Grass or Natural Landscaping, Occasional Benches, Pedestrian Scale Lighting along Regional Trails, at Intersections, Transit Stops and at Trail Crossings.		Street Trees, Grass or Formal Landscaping, Pedestrian Scale Lighting, Occasional Benches.		See Special Planning Area Design Standards and/or Guidelines.		See Special Planning Area Design Standards and/or Guidelines.				



Visionary Network

Note!

This network plan is visionary. There is no dedicated funding available for implementation, and projects will be prioritized for funding based on established criteria as funding becomes available. Once funded, project implementation will take between 3-5 years, on average.



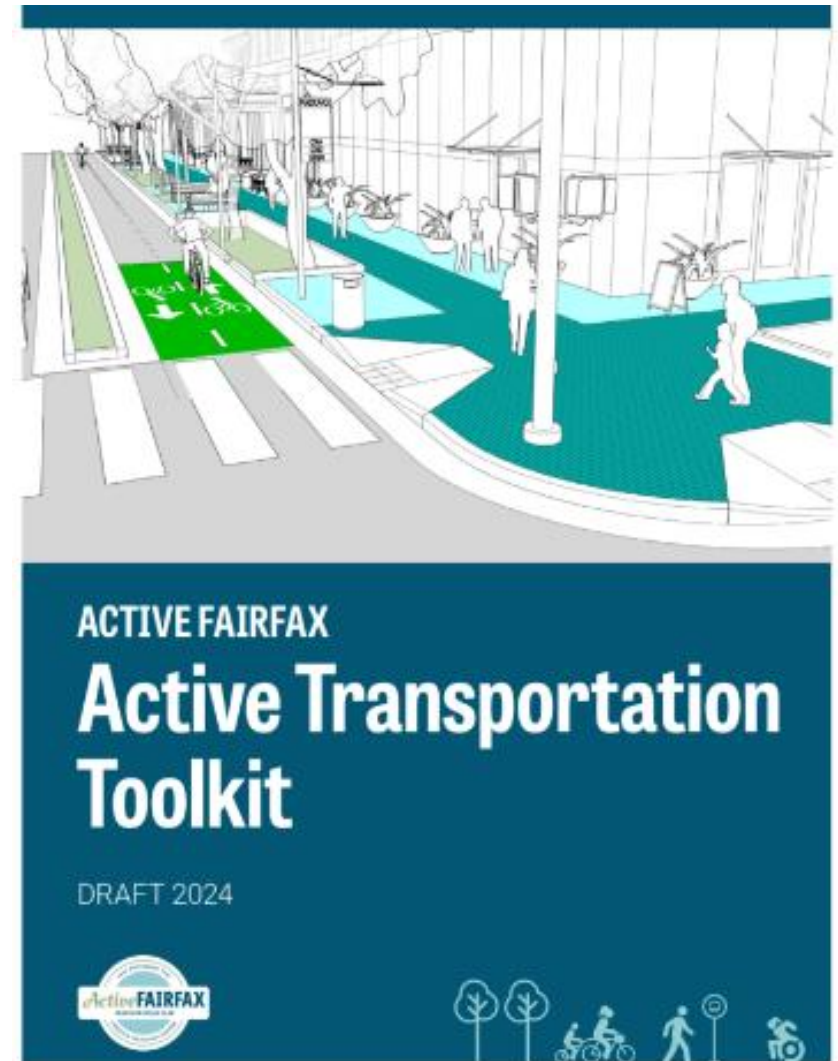
➤ However, the plan will develop a list of recommended priority projects

Active Transportation “Toolkit”

Purpose: To support public and private transportation planning efforts, as well as implementation of planned facilities

Content:

- Planning and implementation guidance on active transportation facility selection and design, and best practices
- A collection of relevant design and policy resources



Next Steps

ActiveFairfax Transportation Plan Study:

- Release of final ActiveFairfax report, including technical analysis documentation, list of recommended priority projects, and programmatic recommendations
- Board endorsement of the Active Transportation Toolkit

Active Transportation and Trails Plan (ATTP):

- Board adoption of the Plan
- Release of interactive ATTP map
- Release of Story Map guide to the ATTP

THANK YOU FOR YOUR TIME

Questions?



More information about the project are available at: <https://www.fairfaxcounty.gov/planning-development/plan-amendments/active-fairfax>