

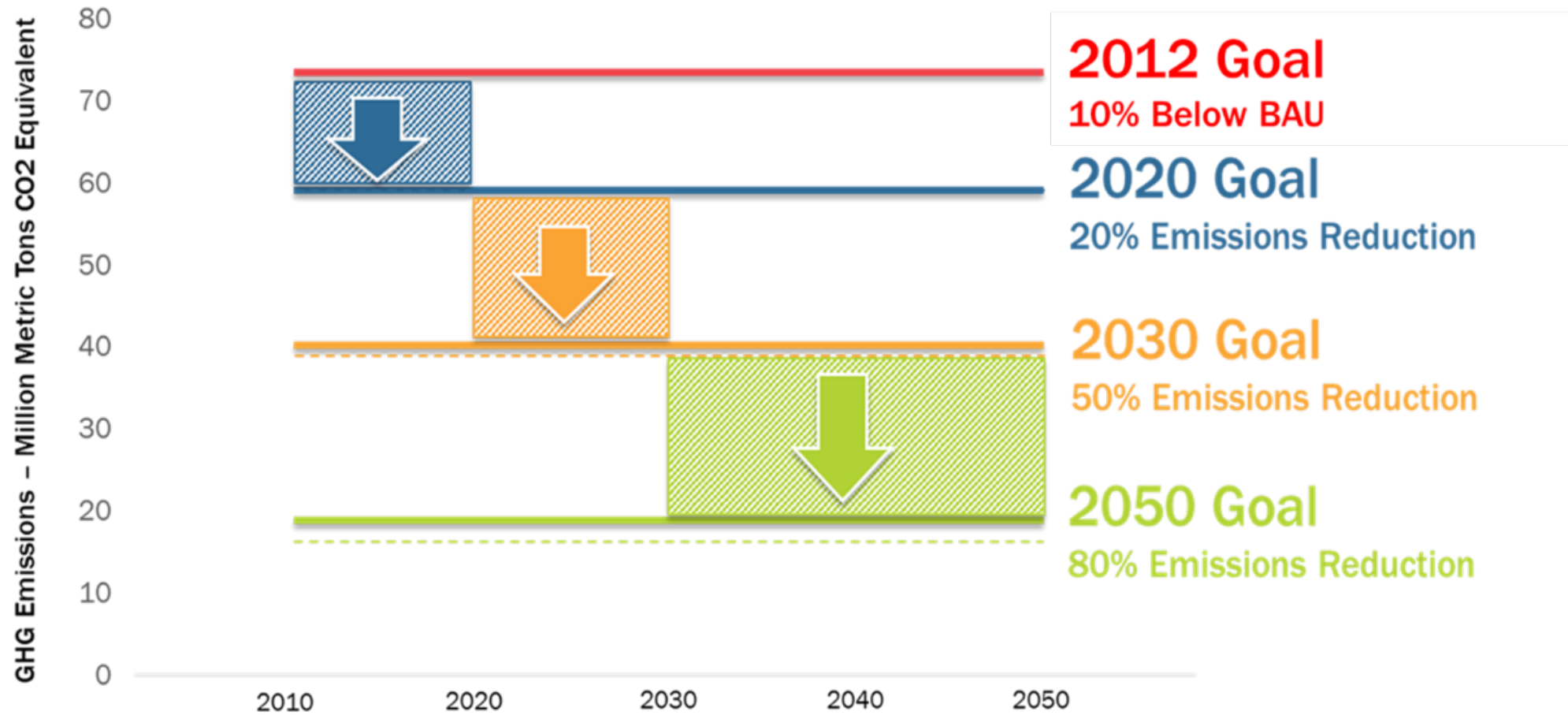
# GREENHOUSE GASES INVENTORY TRENDS

---

Metropolitan Washington Council of Governments (COG)  
Department of Environmental Programs  
Climate, Energy, and Air Program

Metropolitan Washington Air Quality Committee (MWAQC)  
Technical Advisory Committee (TAC) Meeting  
April 14, 2026

# COG Board Goals and Priorities



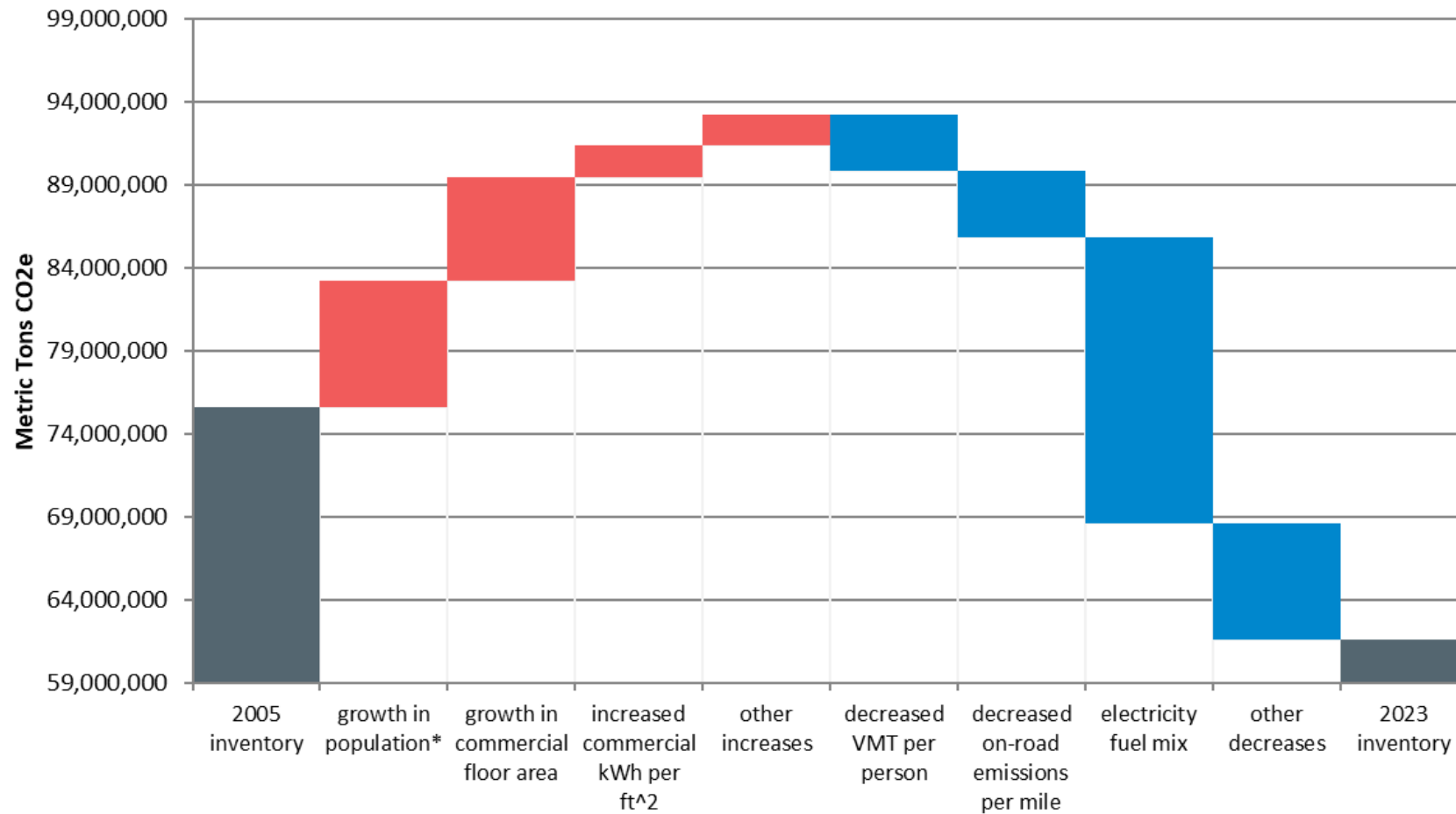
# Regional GHG Emission Reduction Results

Metropolitan Washington **NET** greenhouse gas emissions decreased by **20%** from 2005 - 2023.



# Contribution Analysis

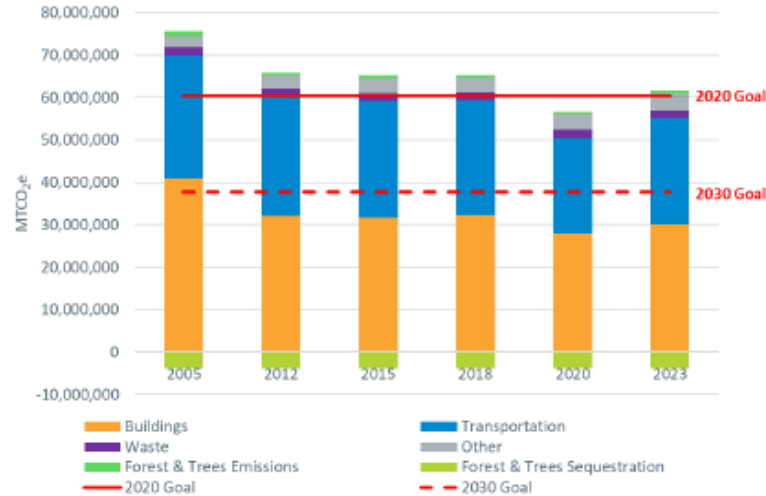
Drivers of GHG emissions change from 2005 to 2023.



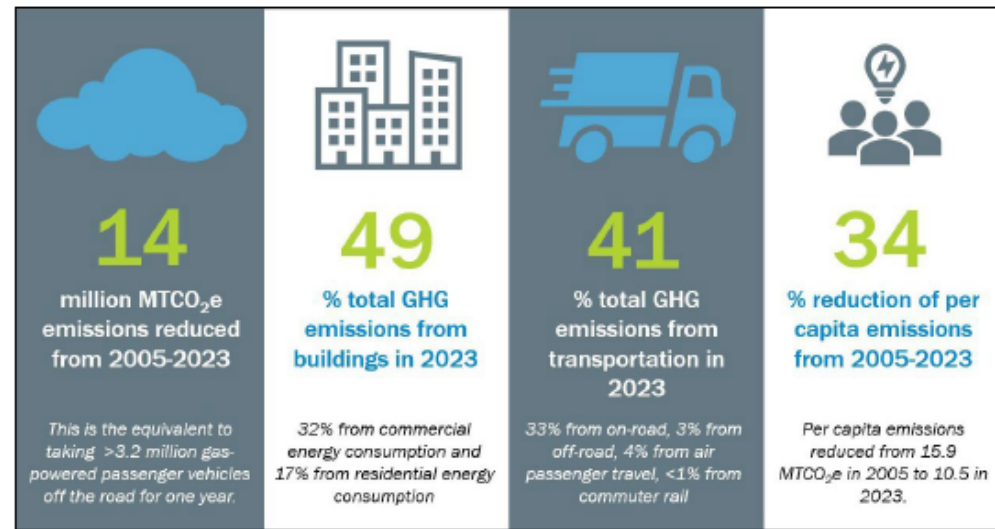
# COMMUNITY-WIDE GREENHOUSE GAS INVENTORY SUMMARY Metropolitan Washington

## EMISSIONS SUMMARY

Metropolitan Washington community-wide net greenhouse gas (GHG) emissions decreased by 20% between 2005 and 2023, despite a 23% growth in population. Forests and trees result in the net sequestration of more than 3.2 million metric tons of CO<sub>2</sub> equivalent (MTCO<sub>2</sub>e) annually, or 5% of total emissions.



Note: Other refers to emissions associated with the release of Hydrofluorocarbons, emissions resulting from local natural gas system losses within the community, as well as emissions from Agriculture. Net emissions factors in sequestration.



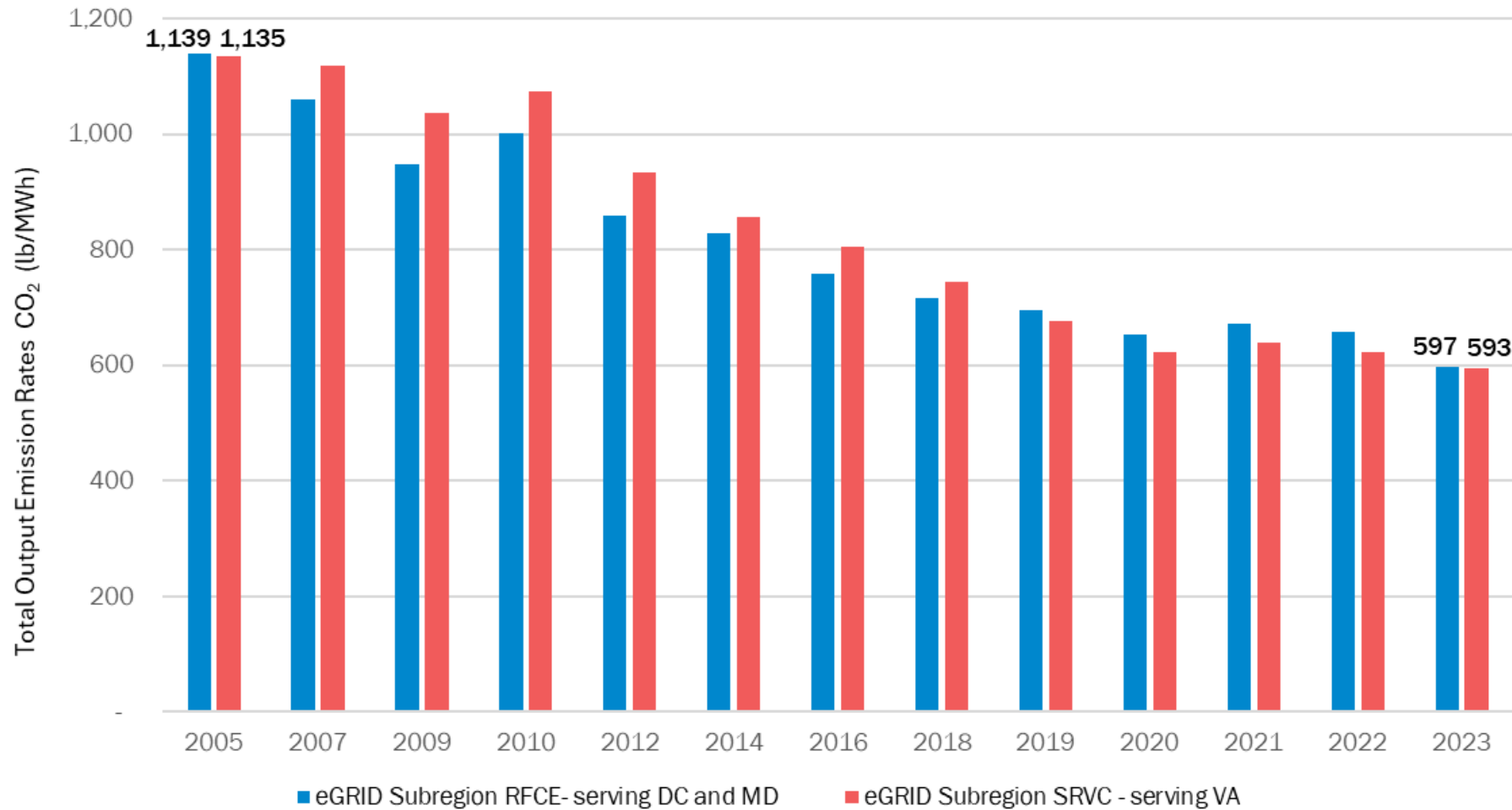
# GHG Inventories

GHG inventories have been finalized for all 24 COG member jurisdictions, northern Virginia, and the COG region!

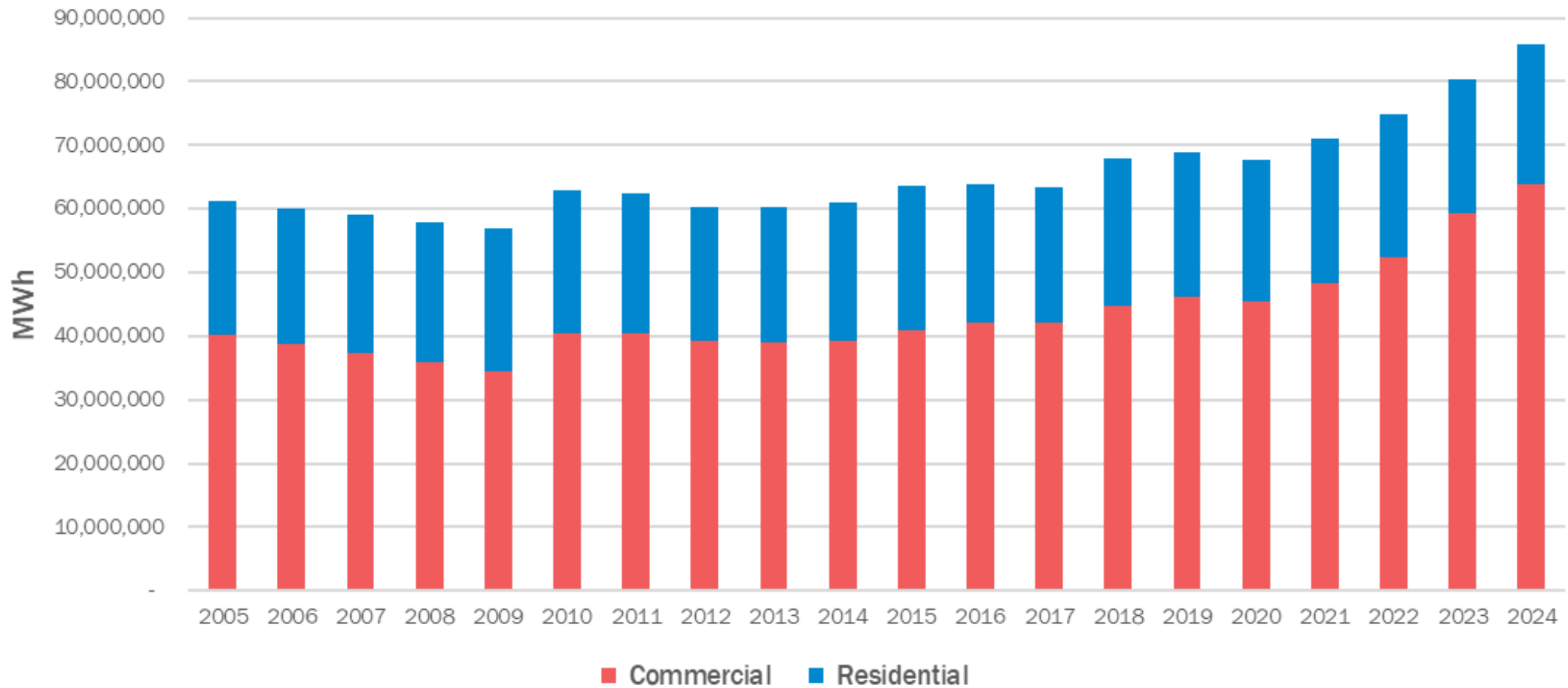
Final GHG Documents:

- [GHG Fact Sheets](#)
- [GHG Data Summary Excel File](#)
- [Contribution Analysis Excel File](#)
- [GHG Methodology Report](#)
- [GHG Video](#)

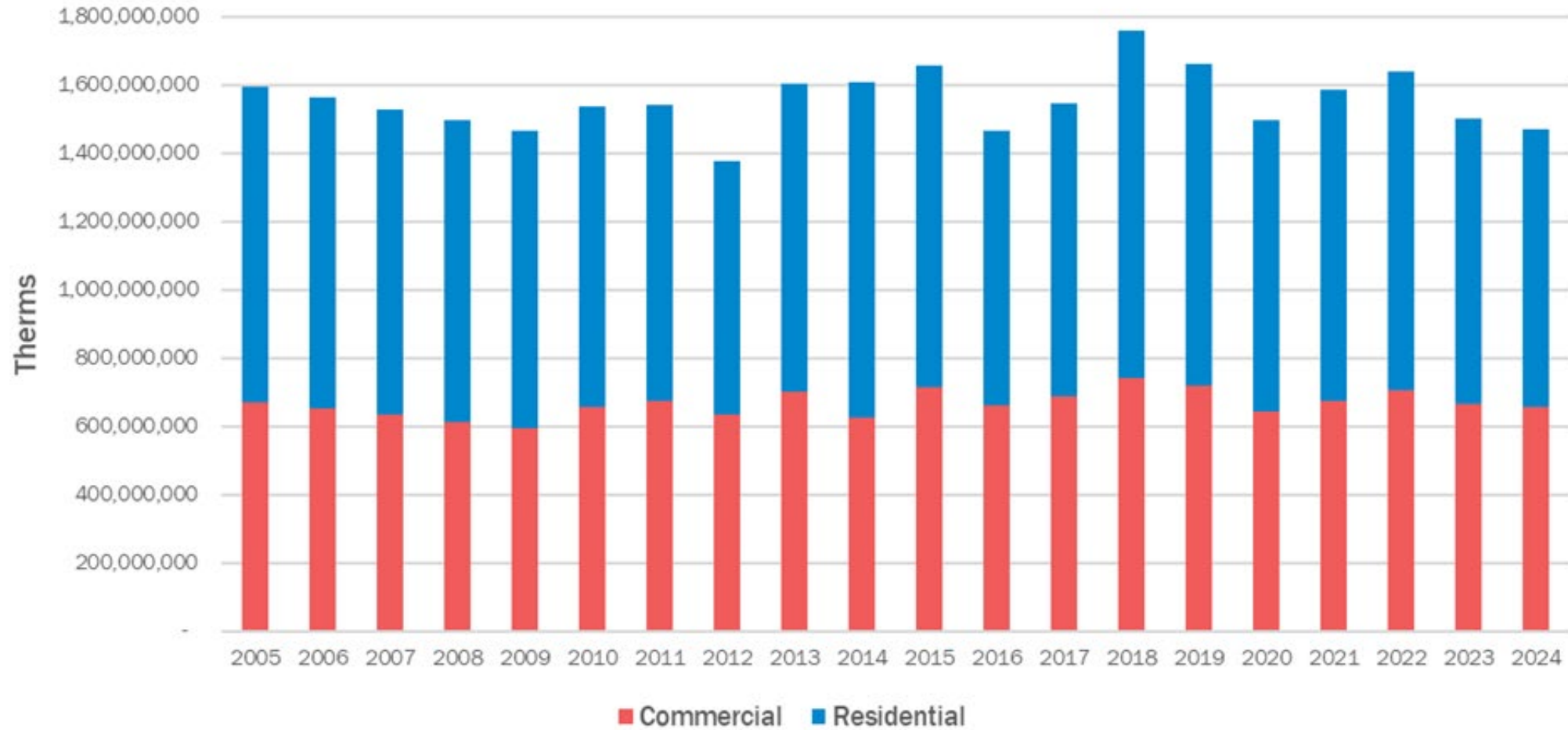
# Regional Electric Grid



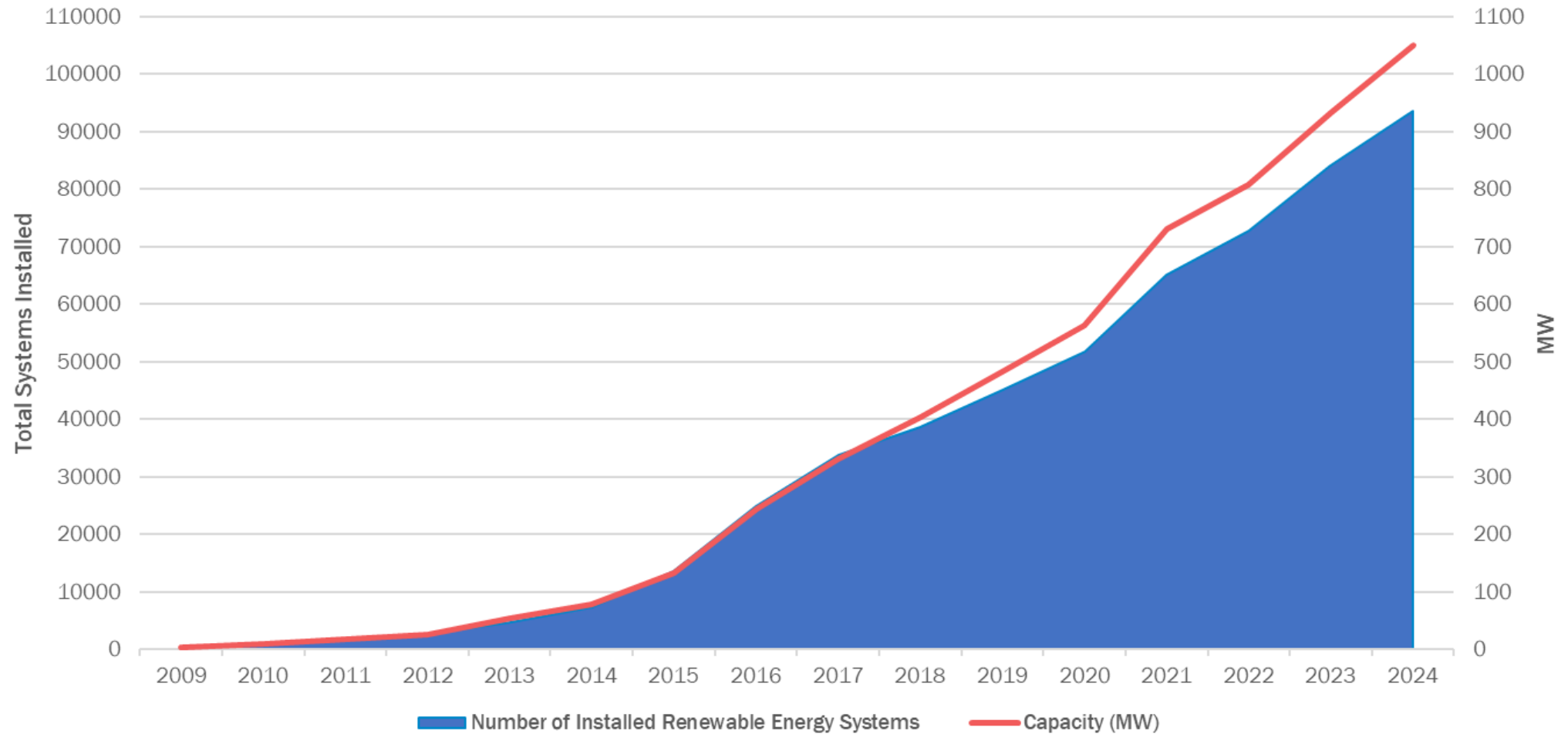
# Electricity Trends



# Natural Gas Trends



# Grid-Connected Renewable Energy Systems



## Maia A. Davis

Senior Environmental Planner

[mdavis@mwkog.org](mailto:mdavis@mwkog.org)

## Alissa Boggs

Environmental Planner

[aboggs@mwkog.org](mailto:aboggs@mwkog.org)

[mwkog.org](http://mwkog.org)

---

777 North Capitol Street NE, Suite 300

Washington, DC 20002