

HOMELESSNESS IN METROPOLITAN WASHINGTON

Results of the Annual Point-in-Time Count and Regional Homelessness Strategies

Sam Kenney, COG Regional Homeless Systems Coordinator

COG Human Services Policy Committee
May 9, 2025

How Many People Are Experiencing Homelessness in our Region? **DRAFT – DO NOT QUOTE OR CITE**

| People Experiencing Literal Homelessness by Jurisdiction, 2021-2025* | | | | | | | |
|--|--------------|--------------|--------------|--------------|--------------|---|----------------------------|
| | 2021 | 2022 | 2023 | 2024 | 2025 | Change in Number of Persons 2021 - 2025 | Percent Change 2021 - 2025 |
| City of Alexandria | 106 | 120 | 152 | 187 | 166 | 60 | 57% |
| Arlington County | 171 | 182 | 213 | 243 | 271 | 100 | 58% |
| District of Columbia | 5,111 | 4,410 | 4,922 | 5,616 | 5,138 | 27 | 1% |
| Fairfax County | 1,222 | 1,191 | 1,310 | 1,278 | 1,322 | 100 | 8% |
| Loudoun County | 80 | 99 | 220 | 303 | 252 | 172 | 215% |
| Montgomery County | 577 | 581 | 894 | 1,144 | 1,510 | 933 | 162% |
| Prince George's County | 537 | 571 | 659 | 658 | 608 | 71 | 13% |
| Prince William County | 282 | 241 | 326 | 345 | 392 | 110 | 39% |
| TOTAL | 8,086 | 7,395 | 8,696 | 9,774 | 9,659 | 1,573 | 19% |

Source: COG 2025

*Totals for 2021-2023 have been revised to reflect the regional number without the City and County of Frederick.

Increase in Families and Single Adults Experiencing Homelessness **DRAFT – DO NOT QUOTE OR CITE**

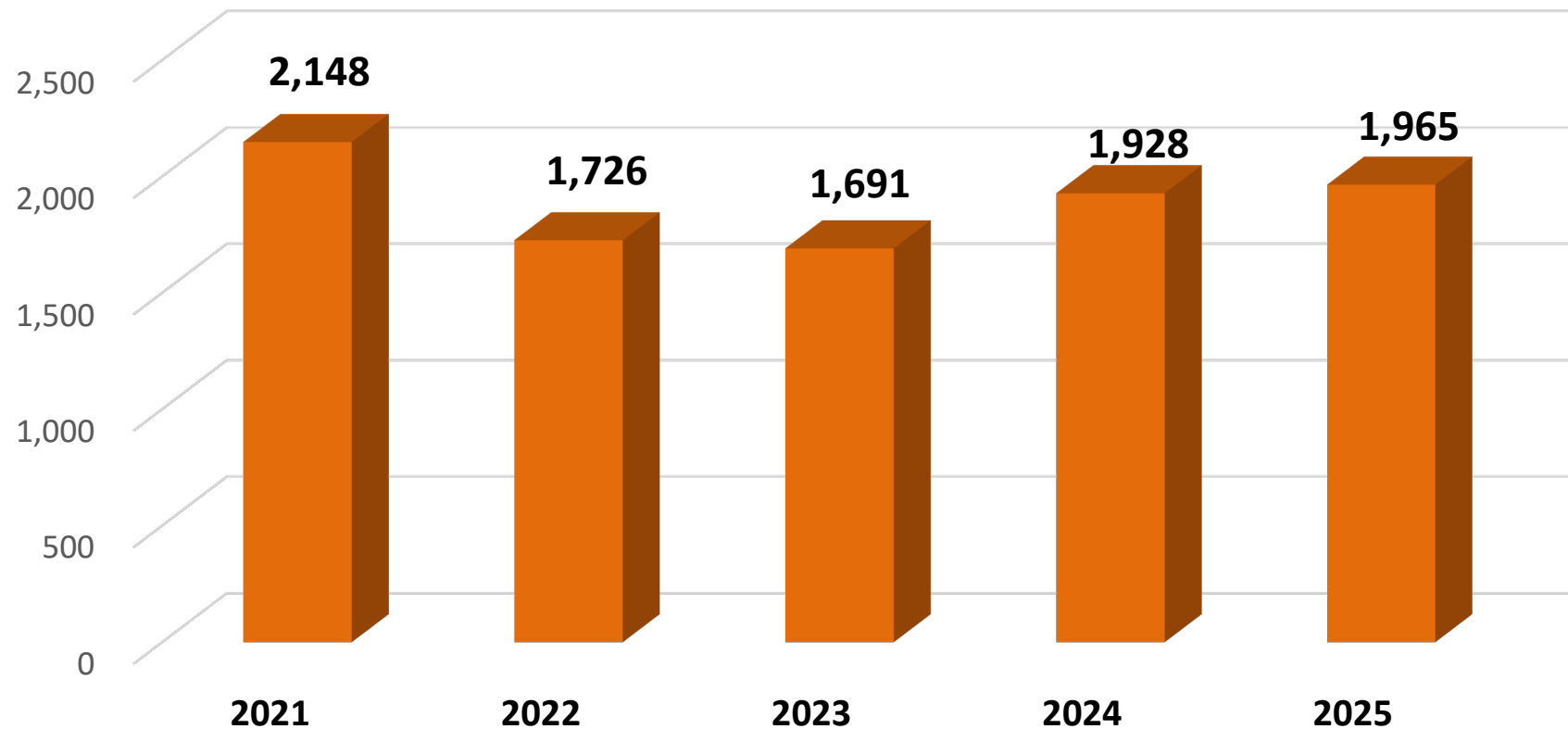
| Household Composition | | | | | |
|-----------------------------------|------|--|--|--|----------------|
| | | Total Persons in Households without Children | Total Persons in Households with Adults and Children | Total Persons in Households with ONLY Minor Children* (Unaccompanied Minors) | Regional Total |
| COG REGION** | 2025 | 6,132 | 3,517 | 10 | 9,659 |
| | 2024 | 6,259 | 3,499 | 16 | 9,774 |
| | 2023 | 5,755 | 2,917 | 24 | 8,696 |
| | 2022 | 5,120 | 2,265 | 10 | 7,395 |
| | 2021 | 5,752 | 2,318 | 16 | 8,086 |
| 2021 - 2025 Percent Change | | 7% | 52% | -6 | 19% |

*Unaccompanied youth are shown as a total number, not percentage, due to the small numbers of persons counted. *Note: Children represent 60% of all people in homeless families.*

Chronic Homelessness **DRAFT – DO NOT QUOTE OR CITE**

Single Adults Experiencing Chronic Homelessness

Source: COG 2025

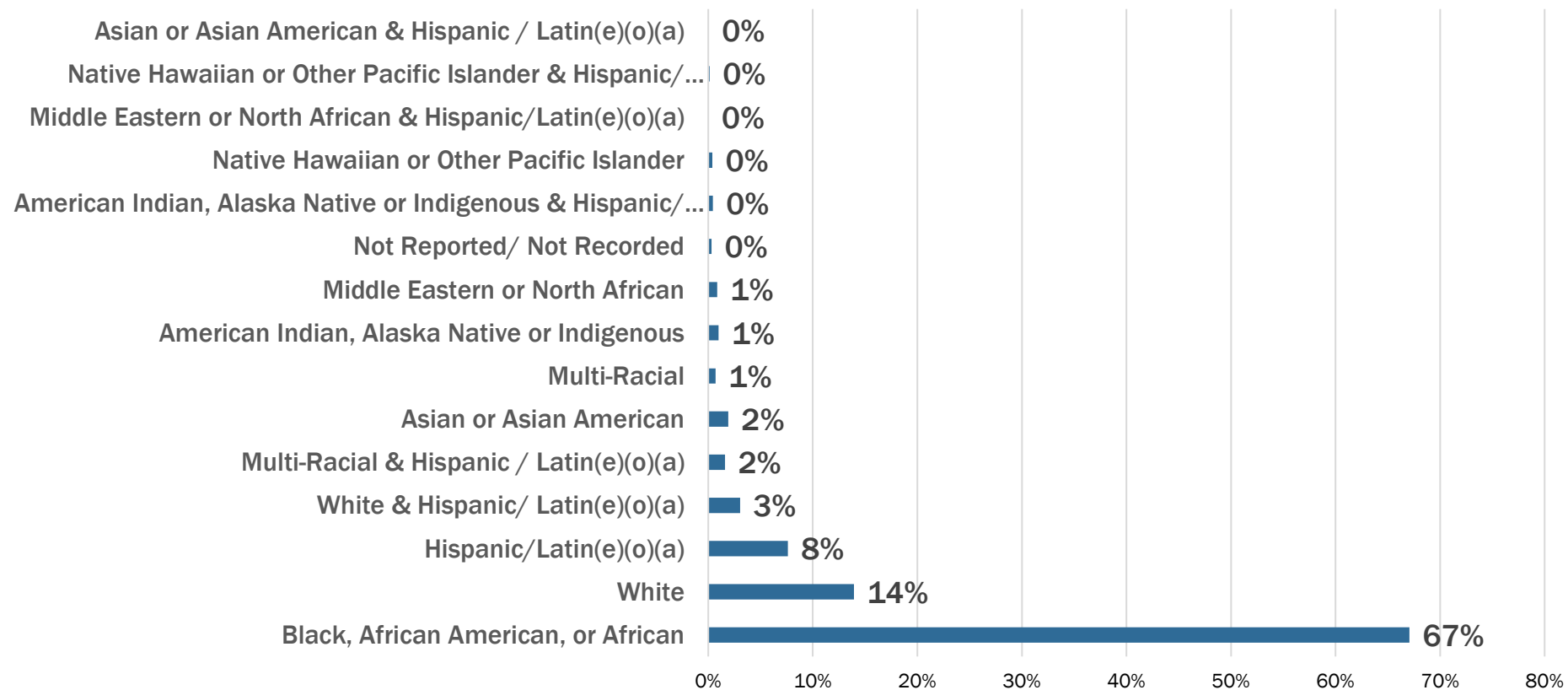


Racial Disparities in Who Experiences Homelessness

DRAFT – NOT FOR DISTRIBUTION

Regional Homeless Single Adults Demographic Profile (Race and Ethnicity)

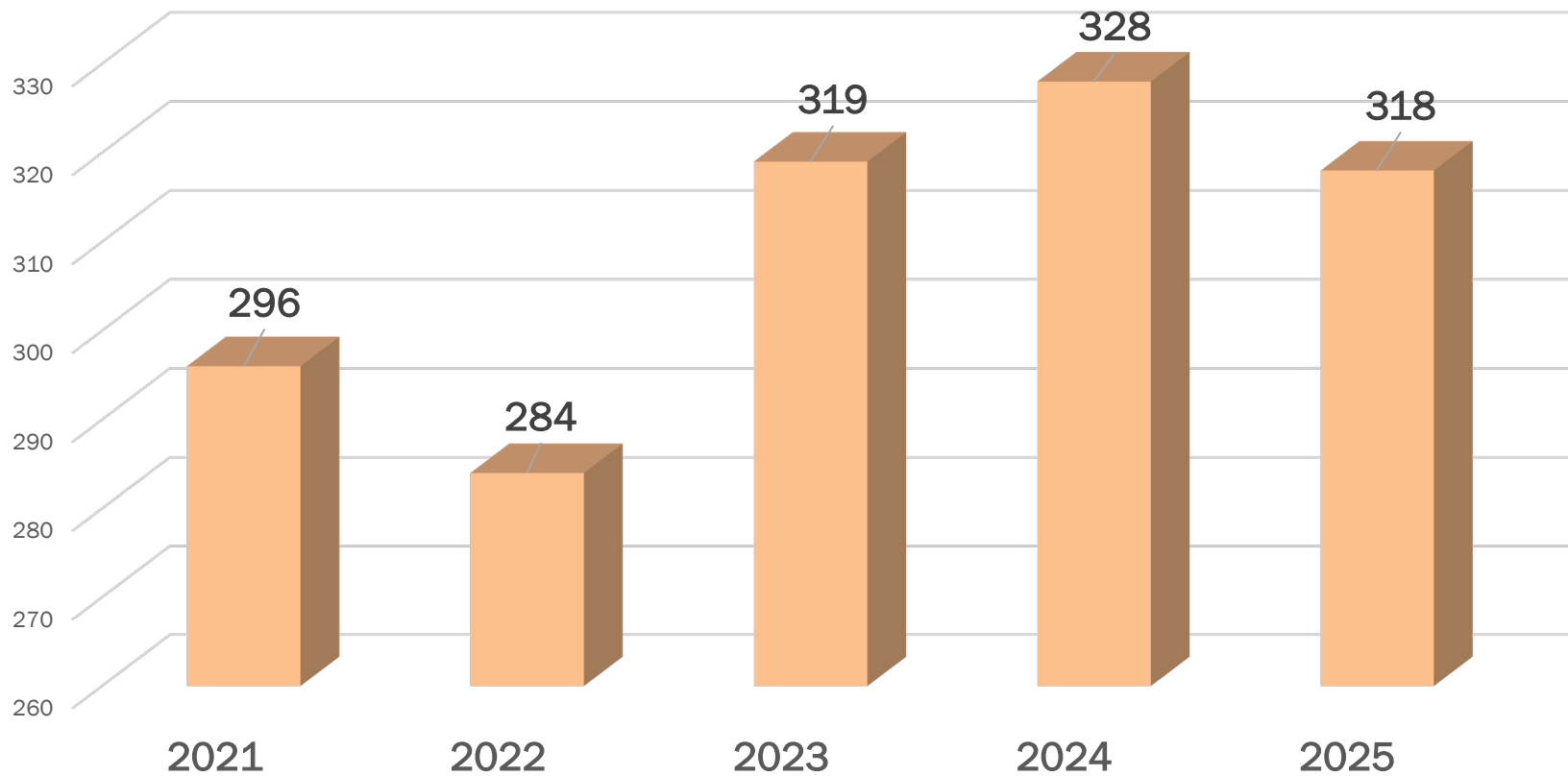
Source: COG 2025



Veteran Homelessness **DRAFT – DO NOT QUOTE OR CITE**

Regional Total Number of Homeless Veterans

Source: COG 2025

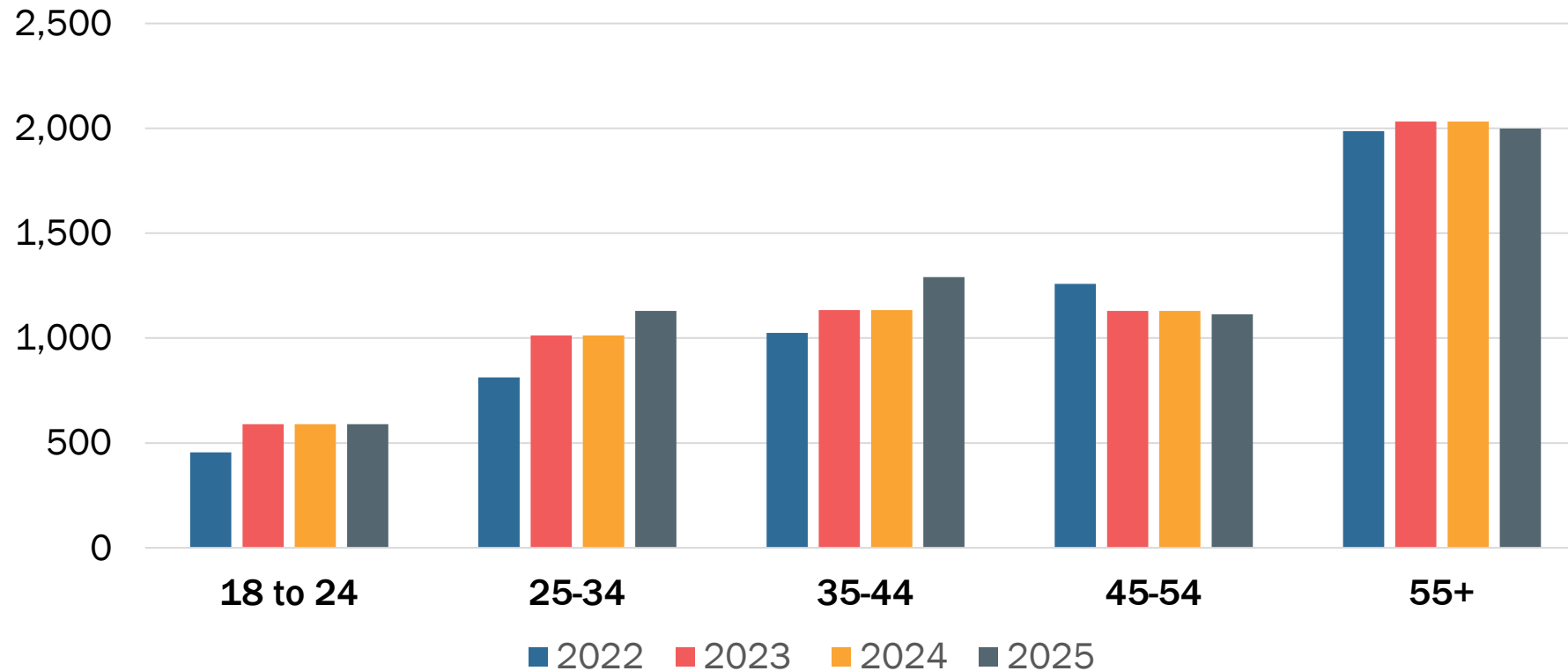


More Seniors Are Experiencing Homelessness **DRAFT**

– DO NOT QUOTE OR CITE

Figure 9: Age Distribution of Single Adults Experiencing Homelessness

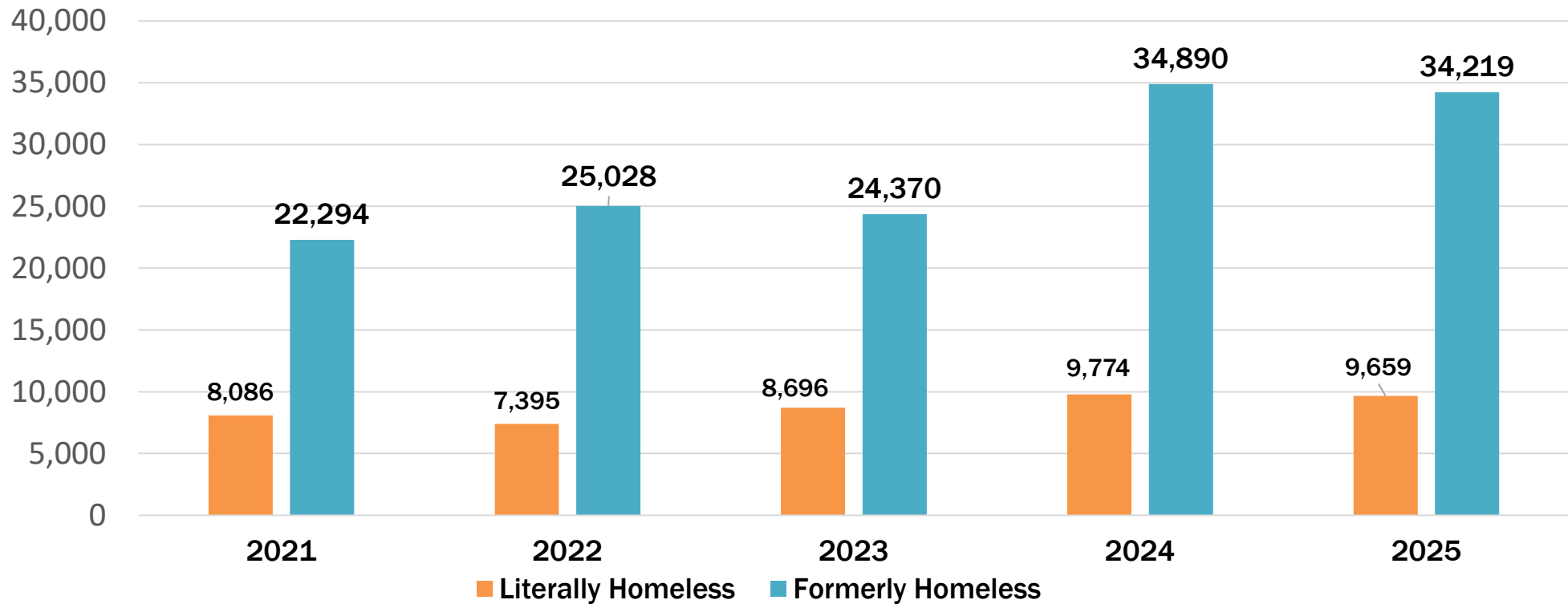
Source: COG 2025



Formerly Homeless: Regional Progress **DRAFT – DO NOT QUOTE OR CITE**

Region's Literally and Formerly Homeless in Permanent Supportive Housing, Rapid Re-Housing, and Other Permanent Housing

Source: COG 2025



Regional Collaboration in Real Time: **DRAFT – DO NOT QUOTE OR CITE**

Regional Coordination Collaborative Leadership Committee (RCCLC):

A leadership table advancing regional alignment in policy, practice, and partnerships.

- Tackles shared system challenges
- Supports strategic coordination
- Builds cross-jurisdiction trust

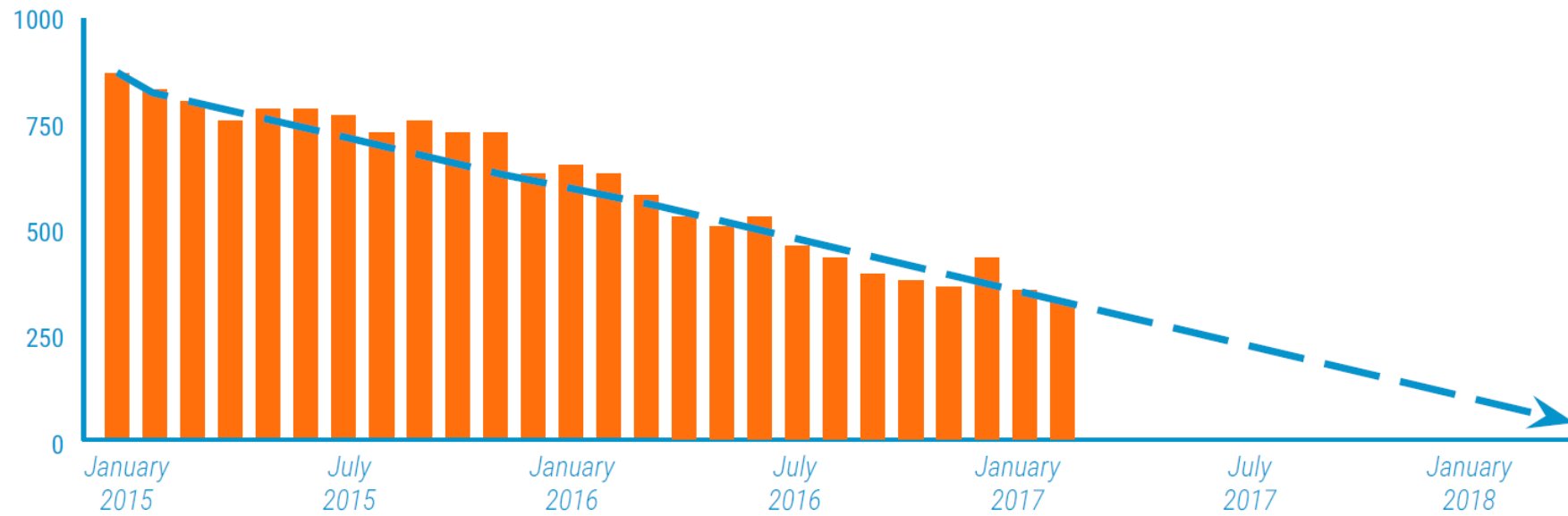
Regional Data Metrics Working Group:

Homeless Management Information System data leads strengthening consistency and insight.

- Aligns definitions and metrics
- Shares data best practices
- Tackles complex technical regional data questions

Beyond Point-in-Time: Community Solutions & Built for Zero **DRAFT - DO NOT QUOTE OR CITE**

Built for Zero is a methodology and framework that supports coordinated, data-driven decision-making and fosters ongoing system improvement across homelessness response efforts.

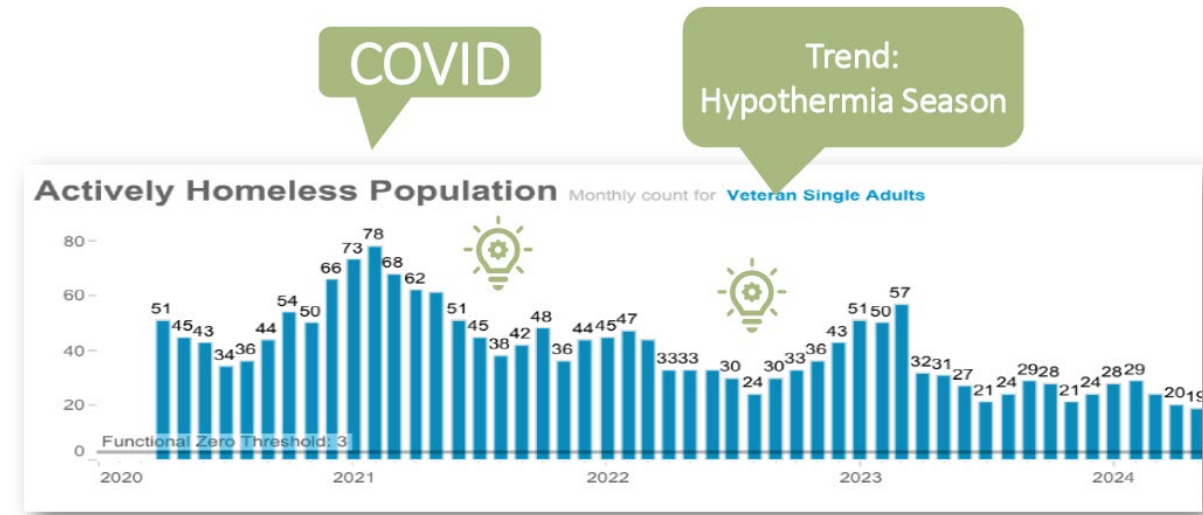


Beyond Point-in-Time: Community Solutions & Built for Zero **DRAFT – DO NOT QUOTE OR CITE**

- **Regional leaders since 2015:** *Arlington County, the District of Columbia, and Montgomery County* helped lay the foundation for data-driven, system-wide collaboration. *Fairfax County* joined in **2018**.
- **Momentum builds in 2024:** *Alexandria, Loudoun County, Prince George’s County, and Prince William County* joined BFZ through COG, reflecting a **growing alignment across the region**.
- **State-level partnership coming in 2025:** The **State of Maryland** is set to join as a **collaborative partner**, signaling a broader commitment to shared regional solutions.

Looking Ahead: Built for Zero **DRAFT – DO NOT QUOTE OR CITE**

- *Data, Data, Data!*
 - New jurisdictions upload data monthly to Community Solutions regional tracker
 - New jurisdictions work to achieve *Quality By-Name Data*
 - September: Review progress from first 6 months and draft new 6-month action plan



Looking Ahead: Data Sharing **DRAFT – DO NOT QUOTE OR CITE**

EXPAND

- Regional data sharing

ADVANCE

- Secure, privacy-centered data integration to guide regional strategies

STRENGTHEN

- Cross-system collaboration to connect homelessness data with broader health, behavioral health, and social services systems to address the root causes of homelessness.



Unique Challenges Ahead & Key Takeaways **DRAFT – DO NOT QUOTE OR CITE**

Challenges

- **Federal changes may slow progress:** Shifts away from Housing First and restrictive grant terms could undercut local momentum.
- **Encampment actions ripple regionally:** Clearances in one area can displace people and overwhelm neighboring systems.

The Way Forward

- **Align regionally, act collectively:** Built for Zero and other shared strategies help jurisdictions coordinate for greater impact.
- **Expand deeply affordable housing:** Long-term housing with supportive services is key to reducing and ending homelessness across the region.



Sam Kenney

COG Regional Homeless Systems Coordinator

(202) 962-3312

skenny@mwkog.org

mwkog.org

777 North Capitol Street NE, Suite 300

Washington, DC 20002