

# Shared Micromobility in Arlington

---

Dockless Micromobility Workshop

Metropolitan Washington Council of Governments

June 30, 2026

Sean Martin

Capital Bikeshare and Shared Micromobility Program Manager



# Permits and Vendors

- 1750 scooters and e-bikes permitted in 2026
  - Bird
    - Scooters: 450
  - GCOO
    - Scooters: 500
  - Lime
    - E-bikes: 200
    - Scooters: 600



# Vendor Rules and Regulations

- Fees
  - Application: \$1000
  - Permit: \$80/permitted vehicle
- Permits set fleet size limits per vendor and per device type
- Must have between 50% and 105% permitted fleet size active
- Must offer discounts or credits to incentivize corral parking
- Must respond to parking complaints within 2 hours
  - Tracked via Report a Problem 311 system
- Equity emphasis
  - Reduced pricing memberships for riders eligible for state/federal programs
  - Equitable distribution requirements
    - Nine Equity Emphasis Areas (EEAs)
    - 10% of fleet in EEAs each morning
    - 0.75% of fleet each EEA each morning



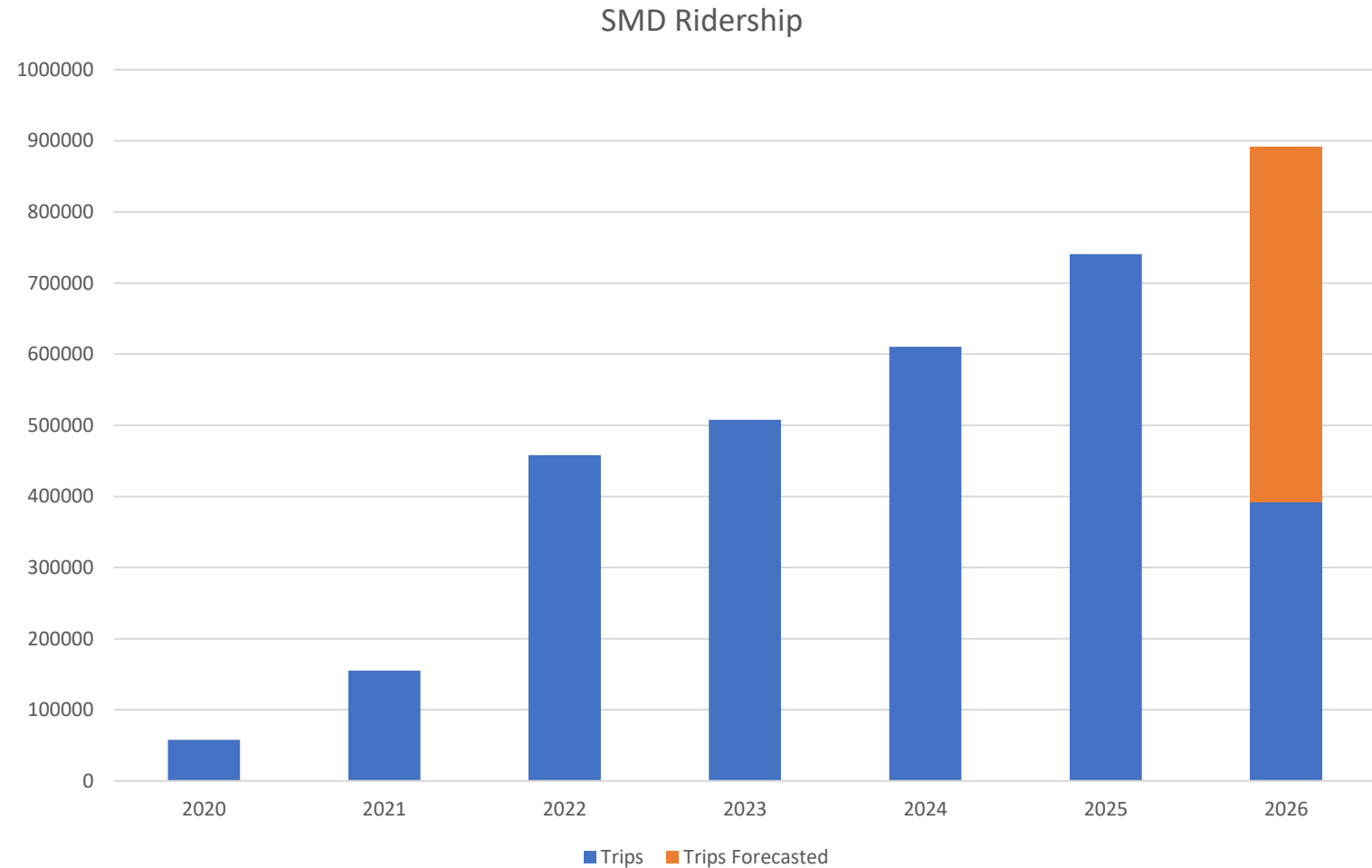
# User Rules and Regulations

- Minimum age: 18
- Max Speed:
  - 20 mph (e-bikes)
  - 15 mph (scooters)
  - 6 mph on sidewalks
- Permitted on streets, sidewalks, and trails
- End of ride requirements:
  - Parked upright
  - Not blocking sidewalks, ramps, building entrances or driveways
  - Submit photo of parked device

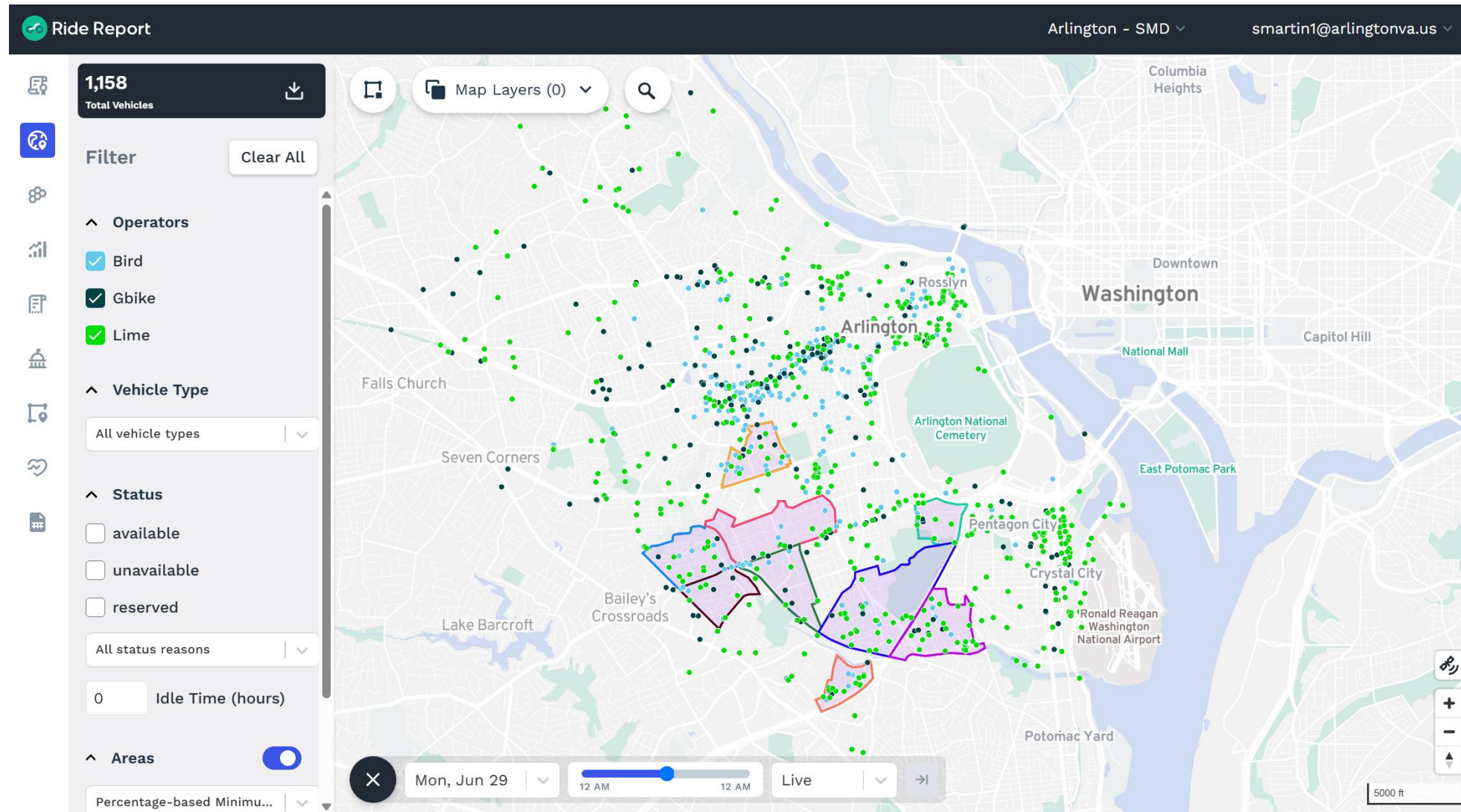


# SMD Trips

- 740,564 trips in 2025
- On pace for 900,000 in 2026
- SMD trips/vehicle/day
  - Scooters: 1.53
  - E-bikes: 2.35
- CaBi trips/vehicle/day
  - Pedal bikes: 1.14
  - E-bikes: 3.37

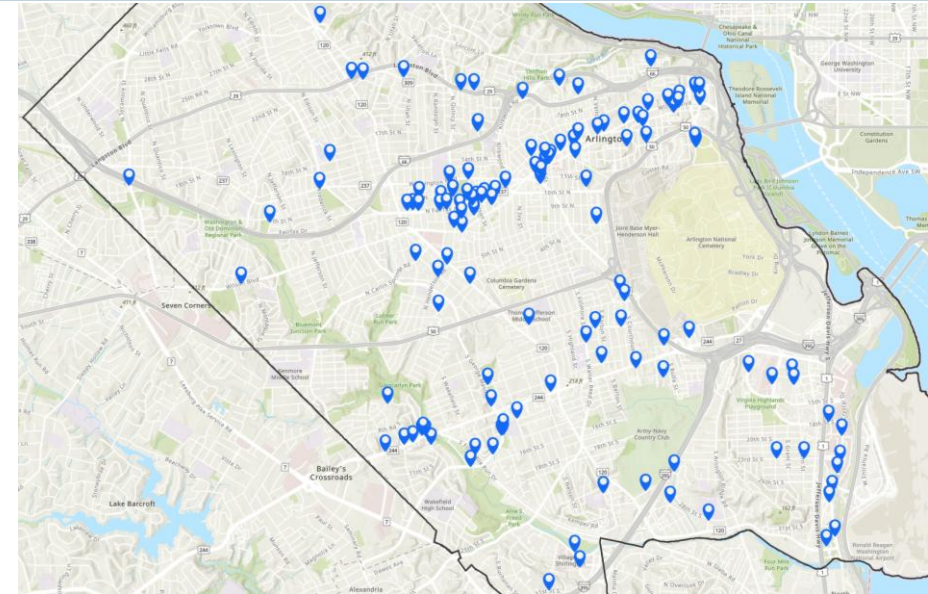


# Ride Report data platform



# Bike and Scooter Parking Corrals

- 130+ locations
- Deployments required to use corrals if nearby
- Rider parking is optional, but encouraged
- Co-located with CaBi stations where possible
- Mostly on-street
  - Discourage sidewalk use
  - But easily damaged
- For everyone
  - Bikes & scooters
  - Shared & privately owned
- “Suggest a corral” via 311



# 311 / Report-A-Problem / Request-A-Service

- Current use cases
  - Reporting damaged devices
  - Reporting improperly parked devices
  - Reporting damaged parking corrals
  - Suggesting corral or CaBi locations
- 325 parking issues related to SMDs in 2025
- Vendor' local operations teams are notified automatically via email
- Vendors must remediate within two hours
  - Operators responsible for closing cases upon resolving issue

Details Location Contact Info


Type of Issue (Required)  
Bird - Parking

Use this option to report abandoned/misplaced devices to their vendor. For all other issues, contact [mobility@arlingtonva.us](mailto:mobility@arlingtonva.us)

Device Type (Required)

What is the issue (Required)

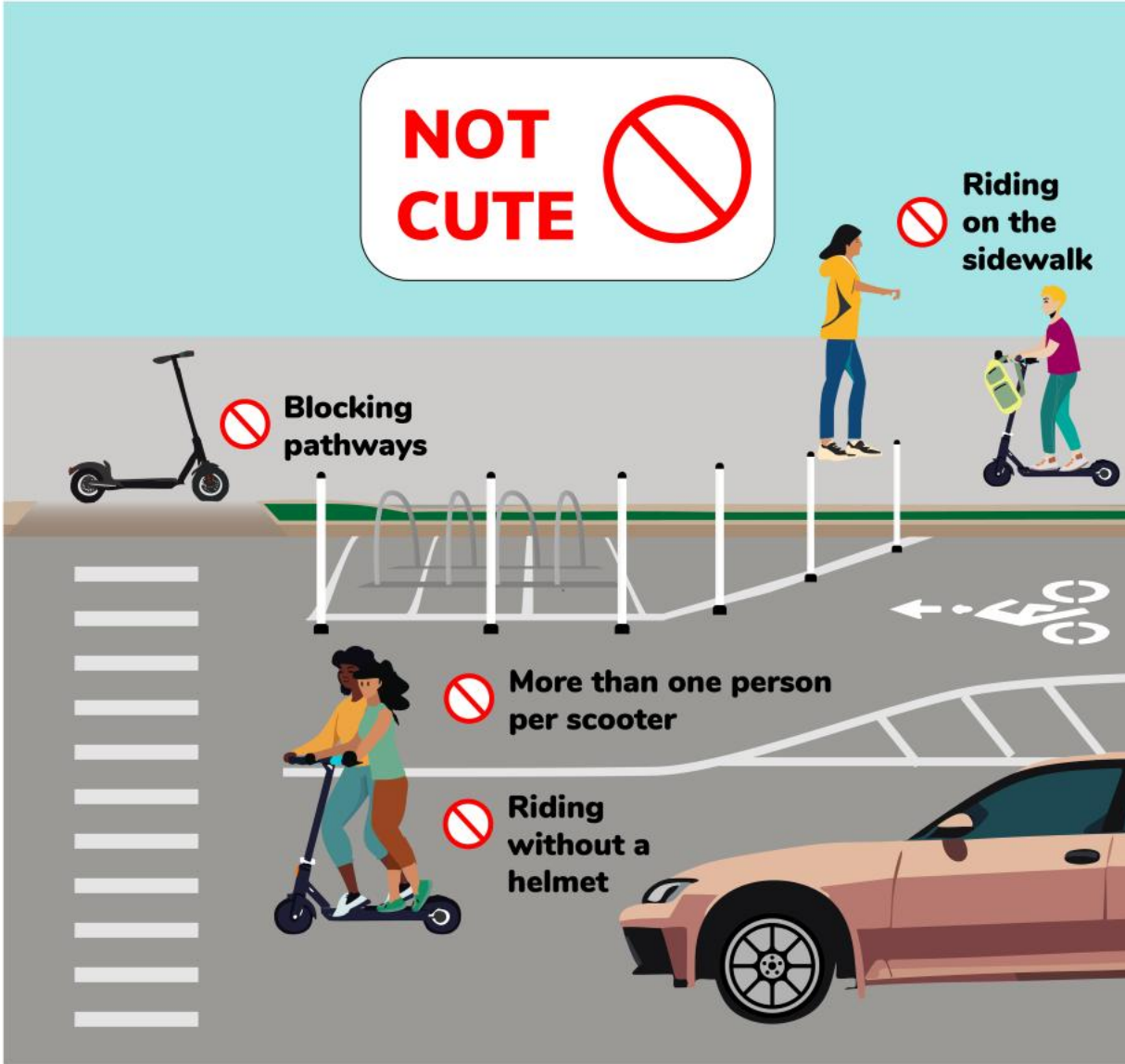
Comments (Required)  
Describe the issue

 Add Photos or Files

Upload up to 5 photos or files. Drag and drop here to upload.

Next

# Scoot Cute



# Middle schoolers are not allowed to use rental bikes or scooters.



Bird, Lime, Capital Bikeshare (Lyft) and others will deactivate accounts that give access to underage riders.

## Why?

- **SAFETY:** Motorized scooters and bikes can cause serious injuries or death. Children are statistically more likely to be injured than adults, especially when riding without a helmet.
- **THEY'RE NOT FOR KIDS:** Shared e-bikes and e-scooters are heavy and can go up to 20 mph. Safe use requires maturity, awareness, and coordination, so underage use is prohibited.
- **IT'S AGAINST THE LAW:** Capital Bikeshare users **must be 16 or older\***. Other rental/shared e-scooter and e-bike users **must be 18 years or older.**

## Talk with your kids about their transportation options.

- **USE PERSONAL NON-MOTORIZED BIKES AND SCOOTERS:** Check [BikeArlington](#) for more information on how to ride safely.
- **TAKE THE BUS FOR FREE:** Any student living in Arlington and enrolled in K-12th grade is eligible for a free [iRide](#) SmarTrip card, which they can use to ride ART bus and (most) Metrobus routes for free within Arlington.

\*Capital Bikeshare users must be 16 or older with guardian approval, or 18 years

# Safety promotion with Arlington Public Schools

Middle schoolers are not allowed to use rental bikes or scooters.



## Why?

- **SAFETY:** Motorized scooters and bikes can cause serious injuries or death. Children are statistically more likely to be injured than adults, especially when riding without a helmet.
- **THEY'RE NOT FOR KIDS:** Shared e-bikes and e-scooters are heavy and can go up to 20 mph. Safe use requires maturity, awareness, and coordination, so underage use is prohibited.
- **IT'S AGAINST THE LAW:** Capital Bikeshare users **must be 16 or older\***. Other rental/shared e-scooter and e-bike users **must be 18 years or older**.



Bird, Lime, Capital Bikeshare (Lyft) and others will deactivate accounts that give access to underage riders.



Talk with your kids about their transportation options.

- **USE PERSONAL NON-MOTORIZED BIKES AND SCOOTERS:** Check [BikeArlington](#) for more information on how to ride safely.
- **TAKE THE BUS FOR FREE:** Any student living in Arlington and enrolled in K-12th grade is eligible for a free [iRide](#) SmarTrip card, which they can use to ride ART bus and (most) Metrobus routes for free within Arlington.

\*Capital Bikeshare users must be 16 or older with guardian approval, or 18 years or older.



Los alumnos de la escuela de enseñanza media tienen prohibido usar bicicletas o scooters de alquiler.



## ¿Por qué?

- **SEGURIDAD:** Los scooters motorizados y las bicicletas pueden causar lesiones graves o la muerte. Estadísticamente, los niños tienen más probabilidades de sufrir lesiones que los adultos, especialmente cuando conducen sin casco.
- **NO SON PARA NIÑOS:** Las e-bikes y e-scooters compartidos son pesados y pueden alcanzar los 20 mph. El uso seguro requiere madurez, conciencia y coordinación, por lo que está prohibido para los menores de edad.
- **ES CONTRARIO A LA LEY:** Los usuarios de Capital Bikeshare **deben ser mayores de 16 años\***. Los demás usuarios de e-scooters y e-bikes de alquiler/compartidos **deben ser mayores de 18 años**.



Bird, Lime, Capital Bikeshare (Lyft) y otras desactivarán las cuentas que den acceso a usuarios menores de edad.



Hable con sus hijos sobre sus opciones de transporte.

- **UTILICE BICICLETAS Y SCOOTERS PERSONALES NO MOTORIZADOS:** Consulte [BikeArlington](#) para obtener más información sobre cómo circular con seguridad.
- **TOME EL AUTOBÚS GRATIS:** Cualquier estudiante que viva en Arlington y esté inscrito en los grados K-12 es elegible para una tarjeta [iRide](#) SmarTrip gratuita, con la que puede viajar gratis en los autobuses ART y en (la mayoría de) las rutas de Metrobus dentro de Arlington.

\*Los usuarios de Capital Bikeshare deben tener 16 años o más con la aprobación de un tutor, o 18 años o más.

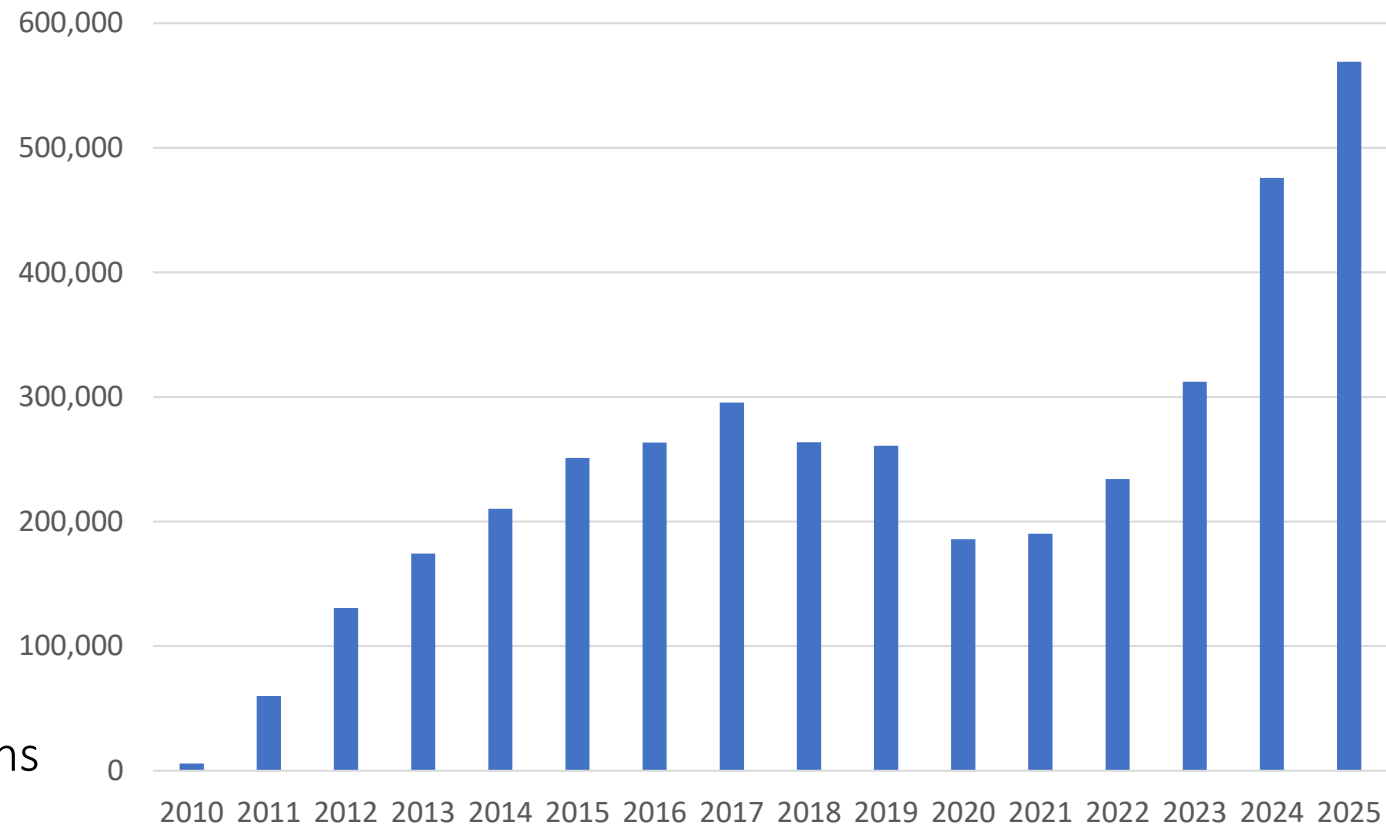


# Capital Bikeshare



- 569,006 trip starts in 2025
- 63% on e-bikes, 37% on pedal bikes
- 112 stations
- 1023 bikes
  - 586 pedal bikes
  - 437 e-bikes
- Prioritizing smaller, more frequent stations
- Evaluating charging station opportunities
- Systemwide parking fee waiver by full stations

CaBi Trips Over Time



THANK  
YOU!

