

REGIONAL BLUE-GREEN INFRASTRUCTURE COMMUNITY ENGAGEMENT AND PLANNING PROJECT

Flood Aware Communities: Series 3

The workshop will begin momentarily



Metropolitan Washington
Council of Governments

REGIONAL BLUE-GREEN INFRASTRUCTURE COMMUNITY ENGAGEMENT AND PLANNING PROJECT

Flood Aware Communities: Series 3

MWCOG, ICF, CHPlanning, Straughan Environmental Inc.

Thursday, April 10, 2024
6:00 PM - 8:00 PM



Metropolitan Washington
Council of Governments

Key Partners



MWCOG (Metropolitan Washington Council of Governments)



DC HSEMA (District of Columbia's Homeland Security and Emergency Management Agency)



Prince George's County Department of Environment (DoE)



DC DOE (Department of Energy & Environment)



Metropolitan Washington
Council of Governments

Consultants



ICF



Straughan Environmental Inc.



CHPlanning



Metropolitan Washington
Council of Governments

Why You're Here

Communities are connected—you represent your communities and your watersheds!

Your Voices and Experiences Matter

- By sharing lived experiences and voices of the people you serve and the community around you, you help us ensure that our approach reflects real community needs and values.

We are Here to Share & Hear your Feedback

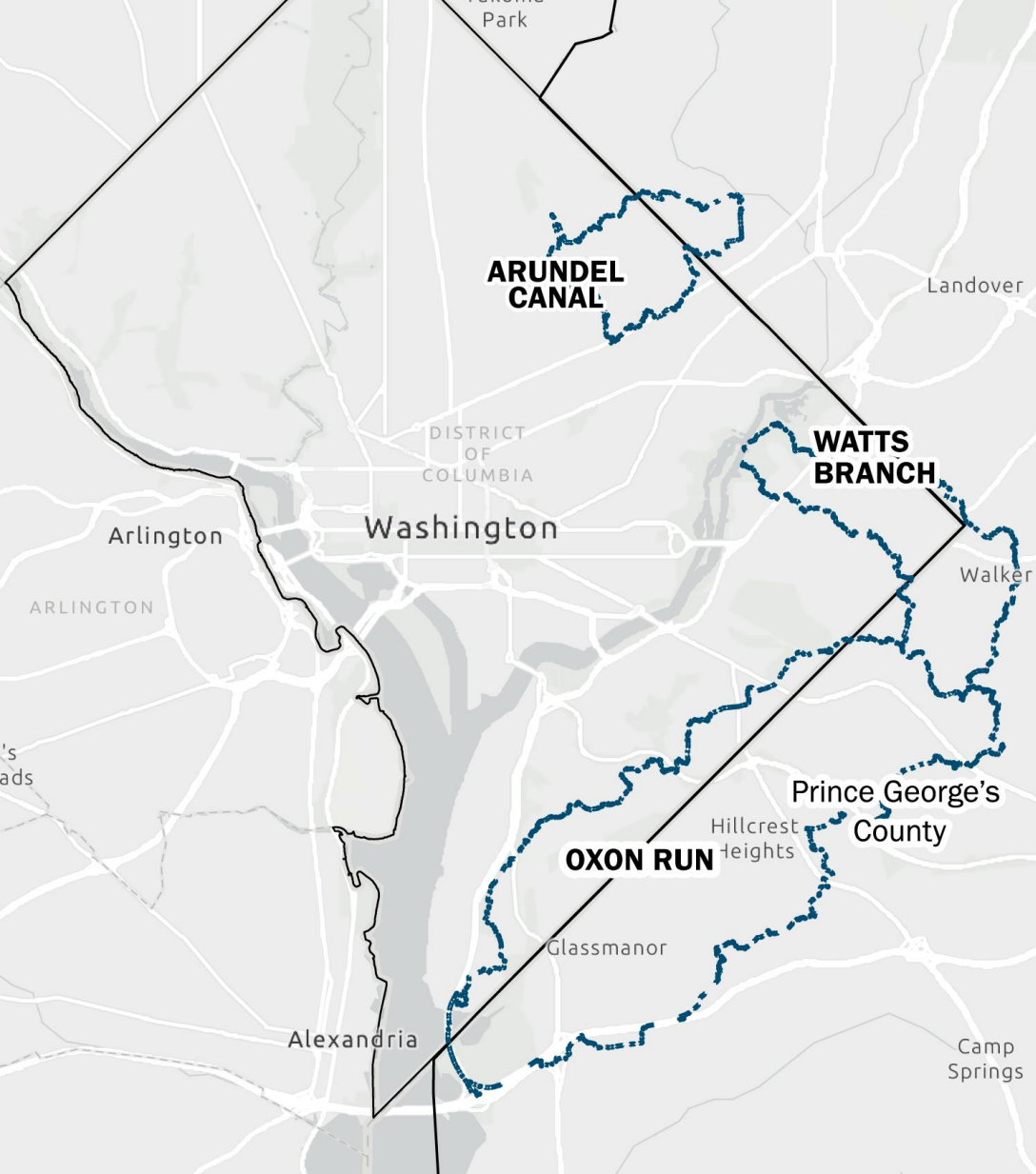
- We've identified draft priority areas based on past discussions, and we want to hear your thoughts. Your insights will help refine and shape the next steps.

Collaboration is Key to Success

- This project is about building a partnership—not just gathering input. Your feedback will directly inform how we move forward together.

Our Commitment: Partnership Over Assumptions

- As we refine priorities, we are committed to working alongside you to ensure that the solutions we develop align with your community's needs.



Community Agreements

- ☒ Please Mute Yourself
- ☒ Closed Captions
- ☒ Be Present
- ☒ Be Open
- ☒ Use Chat for Questions

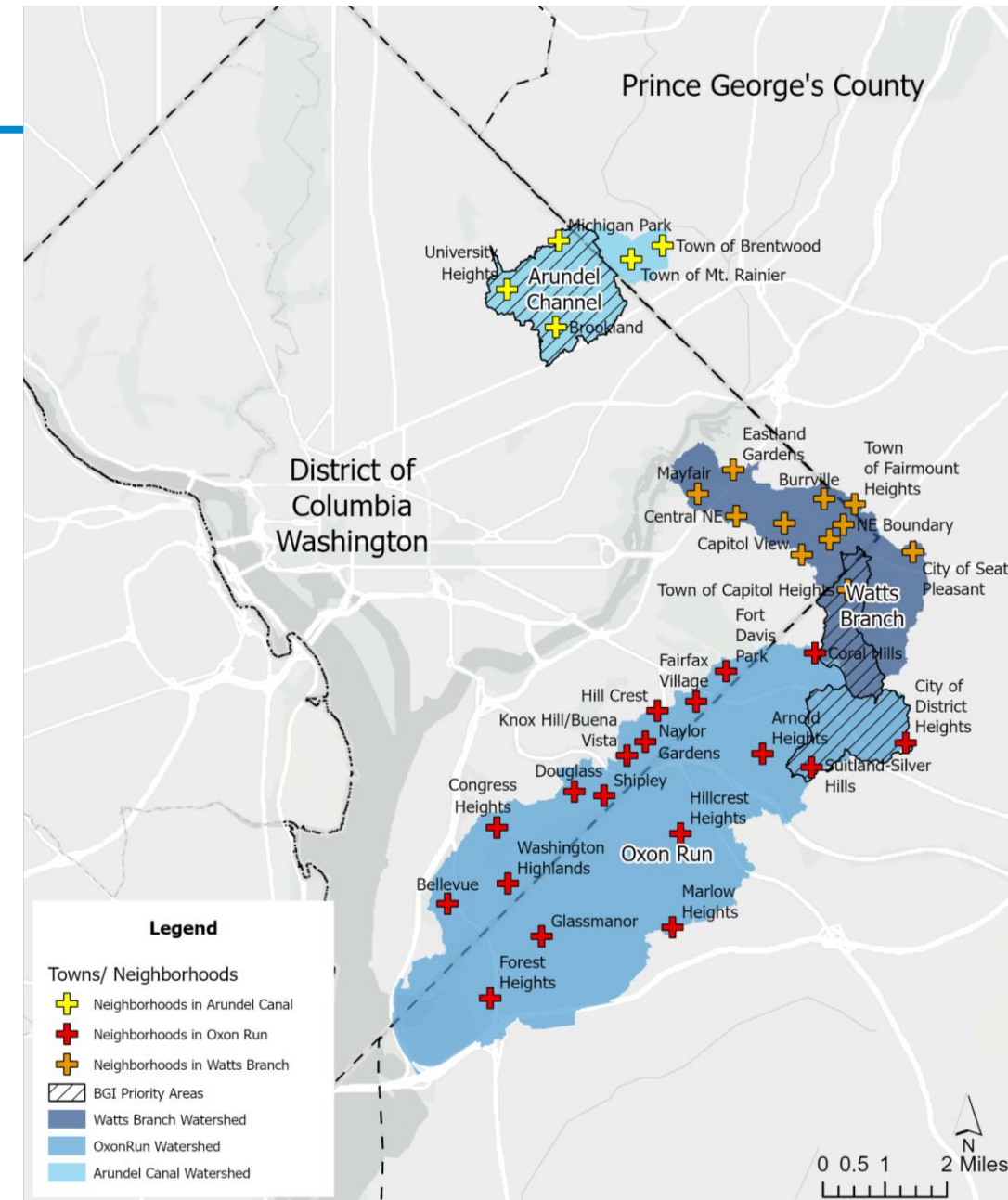


Icebreaker

Please type your **name, role, and affiliation** (*resident, organization, local government, or other*) in the chat.

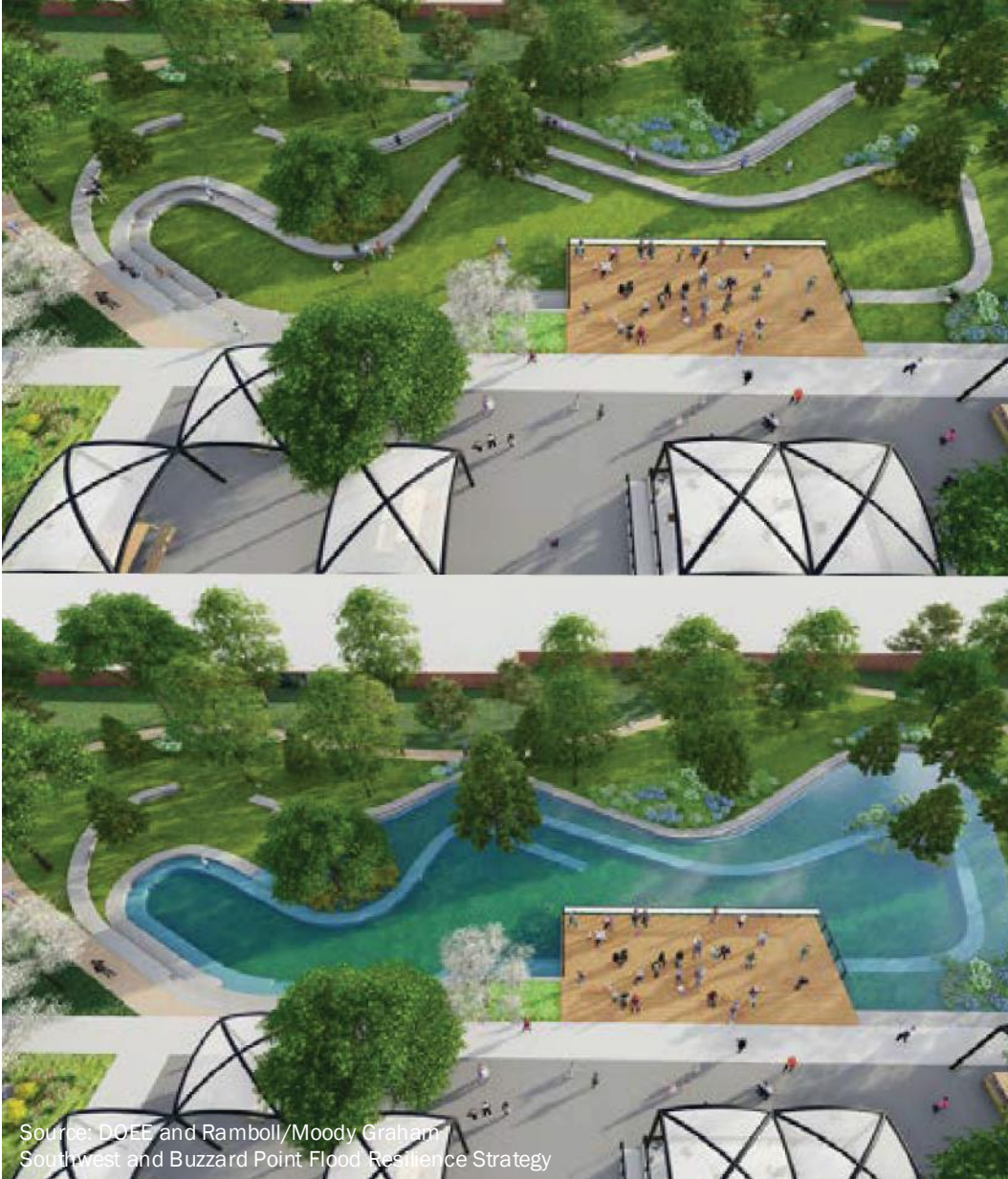
Quick Zoom Poll:

- Which subwatershed(s) do you work/live in?
 - Options: *Arundel Canal, Watts Branch, Oxon Run, All, Outside of the 3 subwatersheds*
- Which jurisdiction do you work/live in?
 - Options: Washington D.C., Prince George's County, or both



Agenda

- Workshop Overview
- Project Overview & Workshop Key Takeaways
- Subwatershed Overview
 - Arundel Canal, Watts Branch, and Oxon Run*
- Concept Plans and Opportunities Analysis
- Breakout Rooms: Watershed-based Discussion
- Closing Remarks



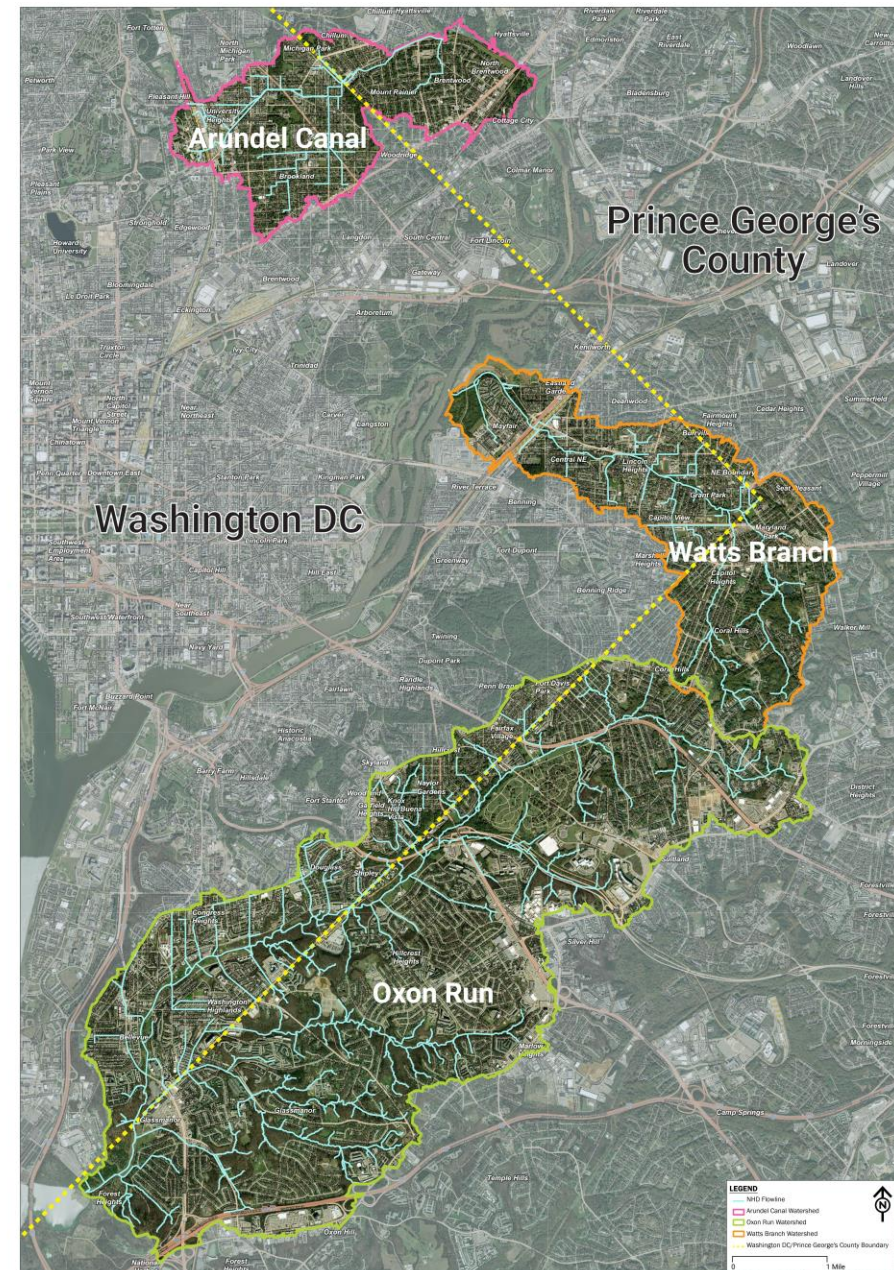
Project Overview

Source: DOEE and Ramboll/Moody Graham
Southwest and Buzzard Point Flood Resilience Strategy

What and Where

The **Regional Blue-Green Infrastructure (BGI) Community Engagement and Planning Project** is a collaborative planning effort to increase resilience in three areas, or **subwatersheds**, spanning the District of Columbia and Prince George's County to flooding.

These subwatersheds are **Arundel Canal**, **Watts Branch**, and **Oxon Run**.



Why a Regional Approach?

Collaborating with neighboring jurisdictions to develop flood management plans, share resources and expertise, and create integrated solutions that address other climate hazards and community needs.

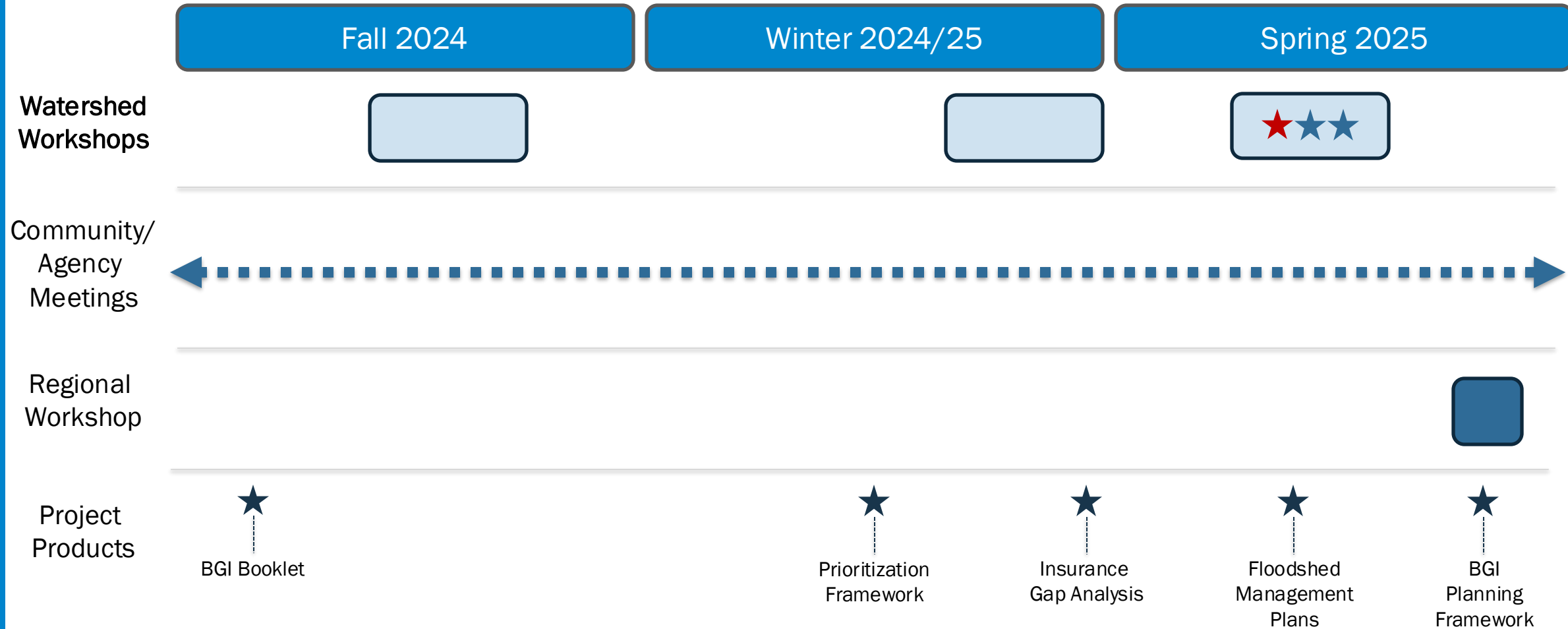
A ***regional approach*** considers the entire watershed or floodplain, addressing upstream and downstream impacts.



Project Goals and Outcomes

- **Reduce Flooding** and identify strategies and projects for nature-based solutions that improve flood resilience.
- **Foster Collaboration** by engaging residents, community-based organizations (CBOs), and local municipalities to gather input, shape strategies, and encourage participation in environmental solutions.
- **Enhance Community Co-Benefits** Develop project concepts with social, environmental, and economic benefits such as green space, air and water quality improvement, and recreational opportunities.
- **Future Partnership:** Through community engagement and flood analyses, the project will identify potential BGI projects and establish partnerships to seek funding for future implementation.

Project Process and Timeline



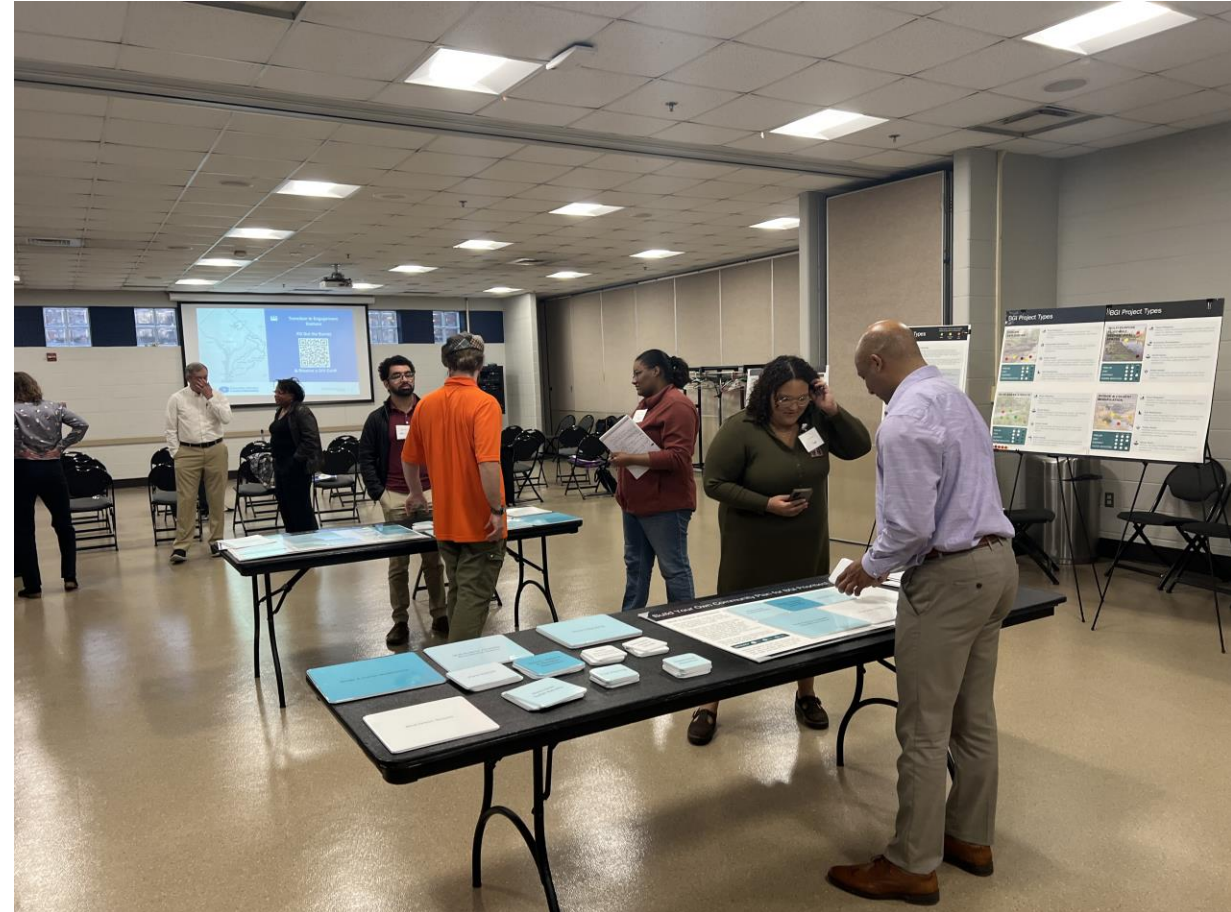
Series 1 & Series 2 Workshops – Key Takeaways

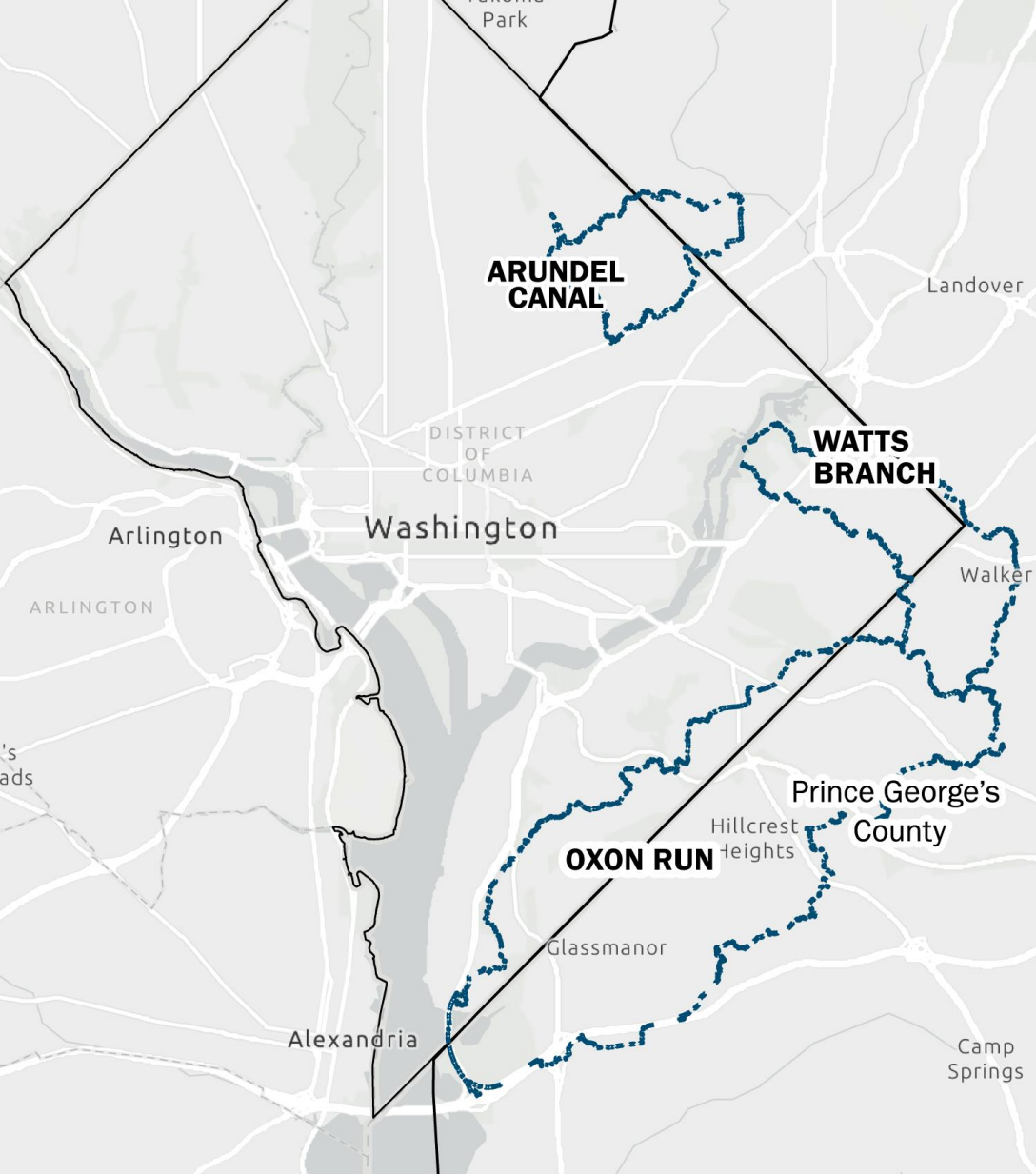
Series 1 – November 2024

- Virtual meeting targeted towards Community Based Organizations

Series 2 – March 2025

- 3 in-person workshops (*1 per watershed*) focused on receiving resident feedback





Opportunities Analysis & Concept Planning



Metropolitan Washington
Council of Governments

Review: What is Blue Green Infrastructure?

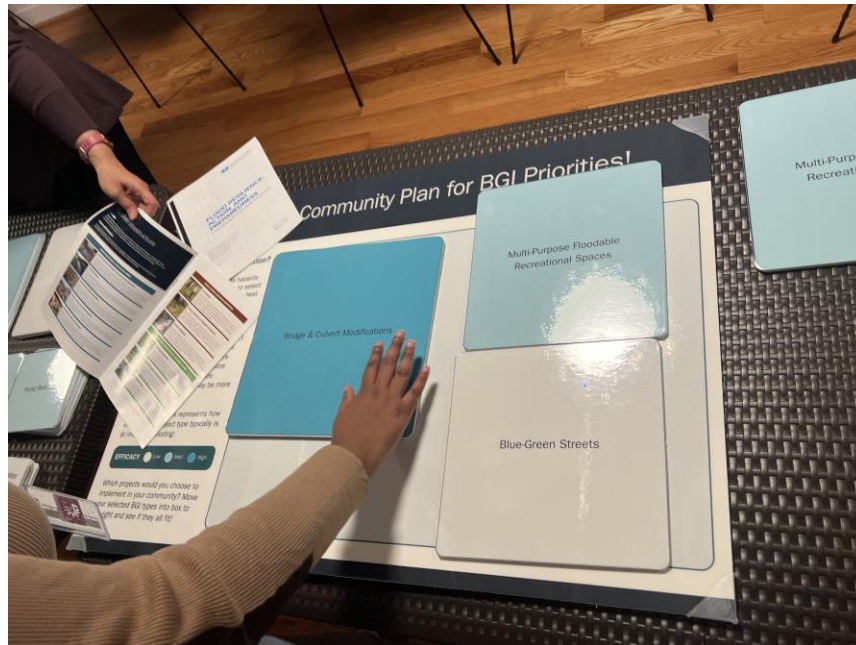


Enhancing BGI with a Watershed Approach

- Deploying a *network* of BGI across the watershed can deliver improved flood reduction benefits.
- What sets this study apart is the ability to plan projects that work better together.
 - Projects that improve one neighborhood can benefit another neighborhood!
 - Projects in one jurisdiction can support another.
- Our deliverable:
 - Identify opportunities across all three subwatersheds.
 - Demonstrate how to advance opportunities to actionable plans with three neighborhood-scale demonstration concepts.

How have you helped already?

Previous events have helped us understand priorities on preferred *types* of projects and their relative effectiveness.



TREE PLANTING

Trees serve an important role in flood management. Their branches and leaves intercept and hold rain, allowing it to evaporate. Their roots absorb water and reduce erosion during storms. In forested areas, decomposing leaves generate high-quality soils that absorb water. Tree planting impacts communities on small and large scales, such as street trees or establishing new forests.

TIMELINE

COST

FOOTPRINT

HAZARD REDUCTION

LOW MED HIGH



Note: Project details refer to one installment of the solution.



Flood Mitigation

Reduce runoff rates by capturing some rainfall in tree canopy, which slows down rain as it falls to the surface, and by providing green space where water can infiltrate.



Social Equity

Provide shade to reduce extreme heat, the financial burden of cooling homes, and the potential health risks associated with heat waves.



Public Health

Provide air quality benefits and shade to reduce health risks associated with extreme heat (i.e., cardiovascular and respiratory illness).



Sustainable Development

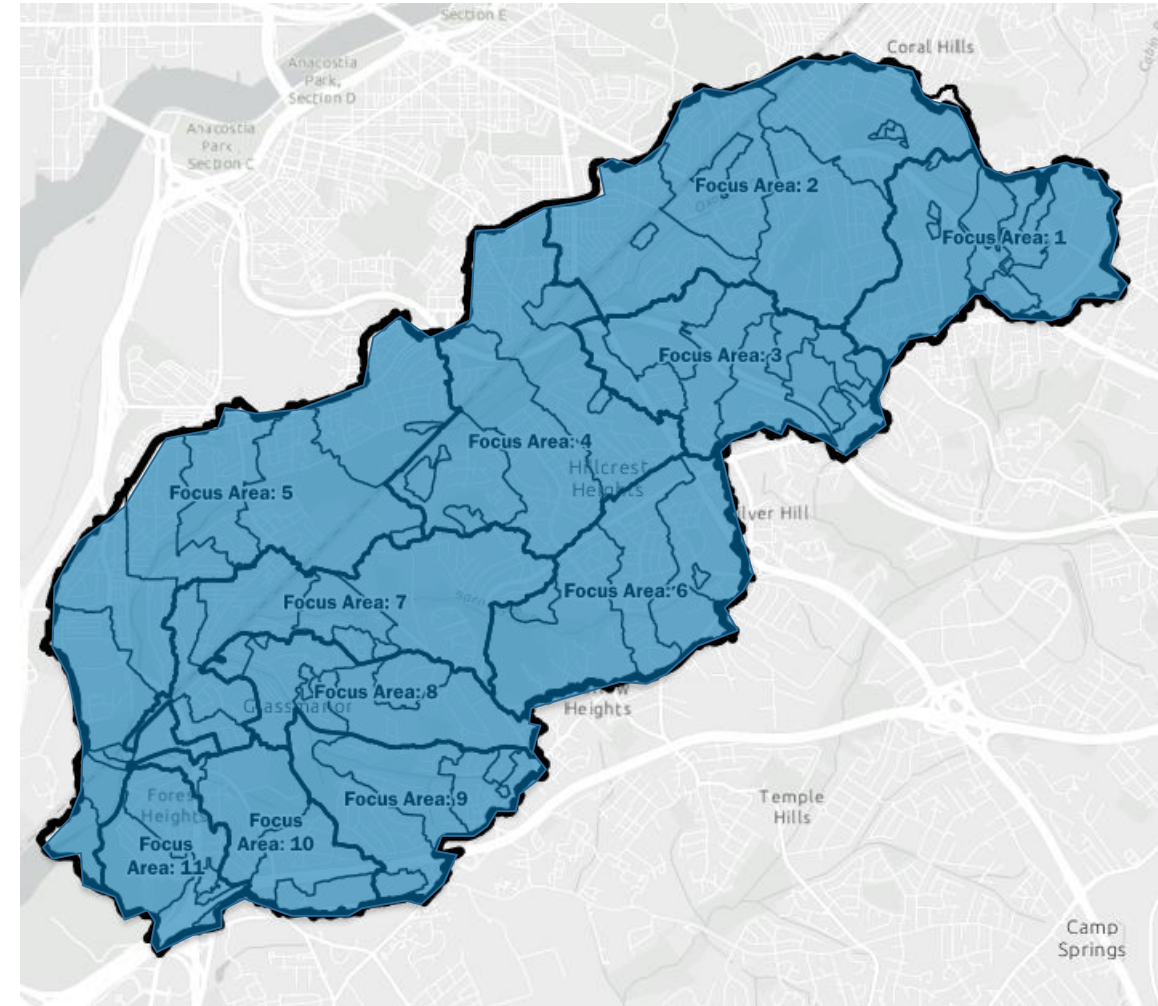
Encourage growth that balances economic, social and environmental well-being for existing and new residents.



Metropolitan Washington
Council of Governments

How do we identify opportunities?

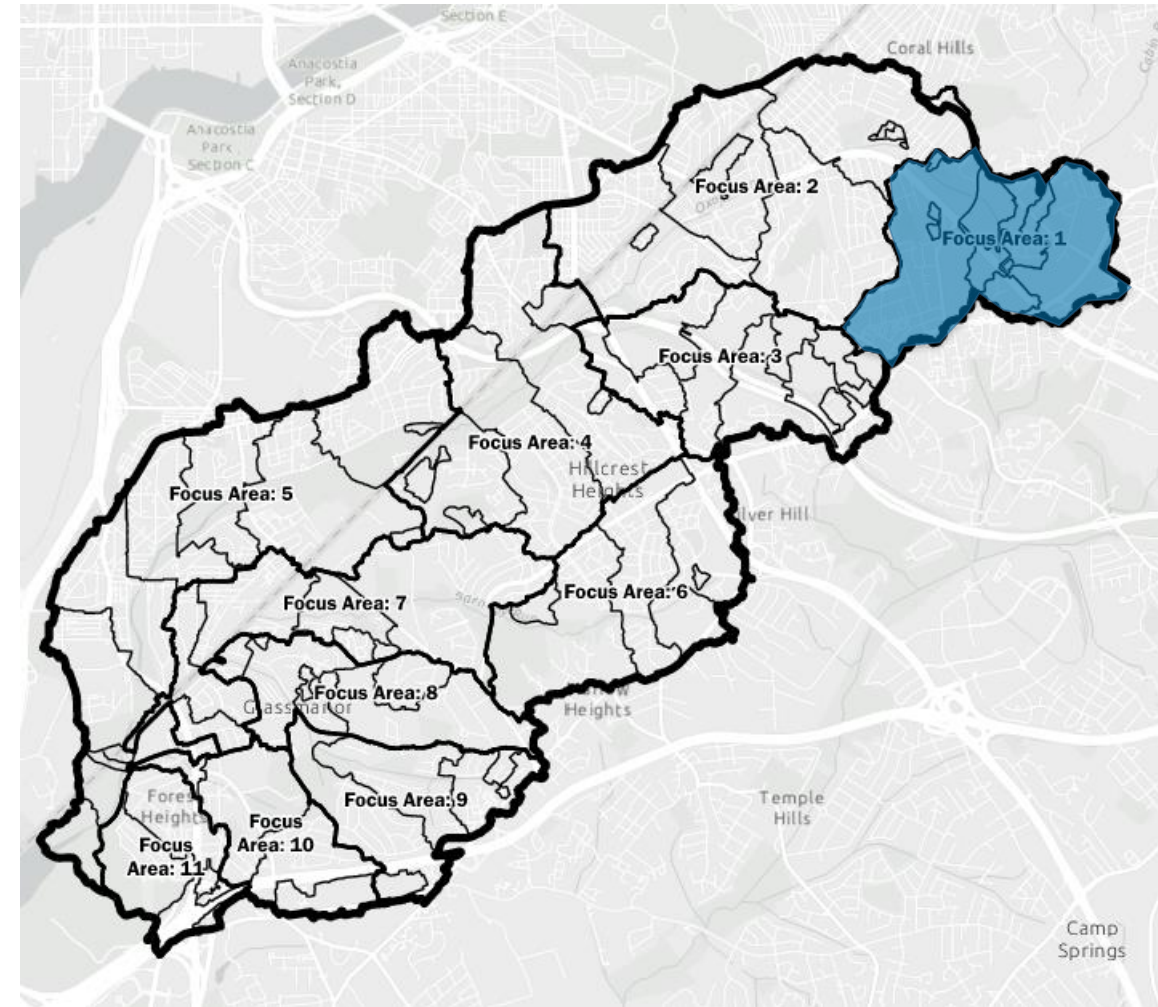
Identify drainage area (shown in blue)



How do we identify opportunities?

Simplify drainage areas to neighborhood scale.

We call these “Focus Areas”



How do we identify opportunities?

FOLLOW THE WATER!

Map existing flood risks.

Identify primary stormwater pathways

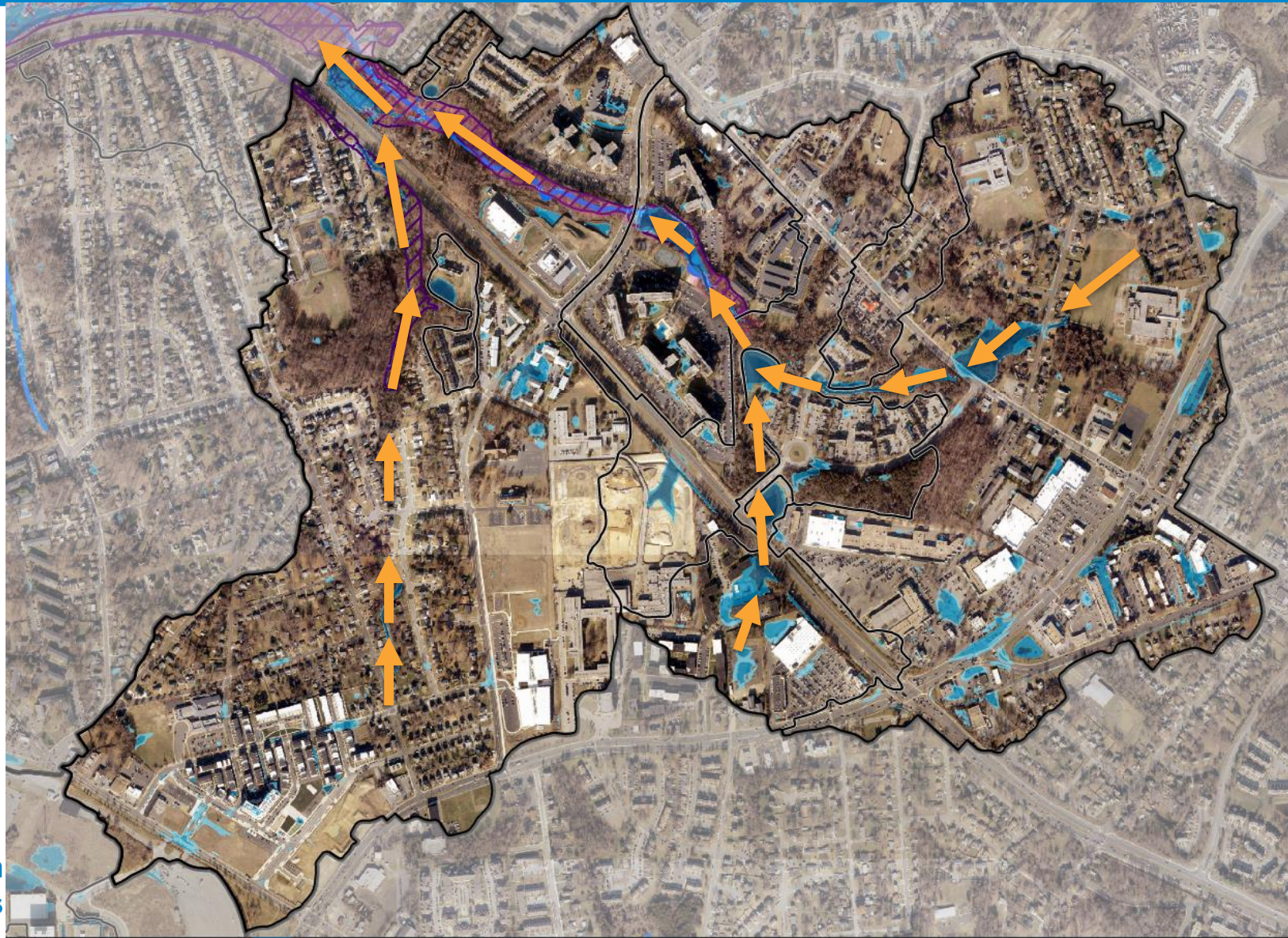


How do we identify opportunities?

FOLLOW THE WATER!

Map existing flood risks.

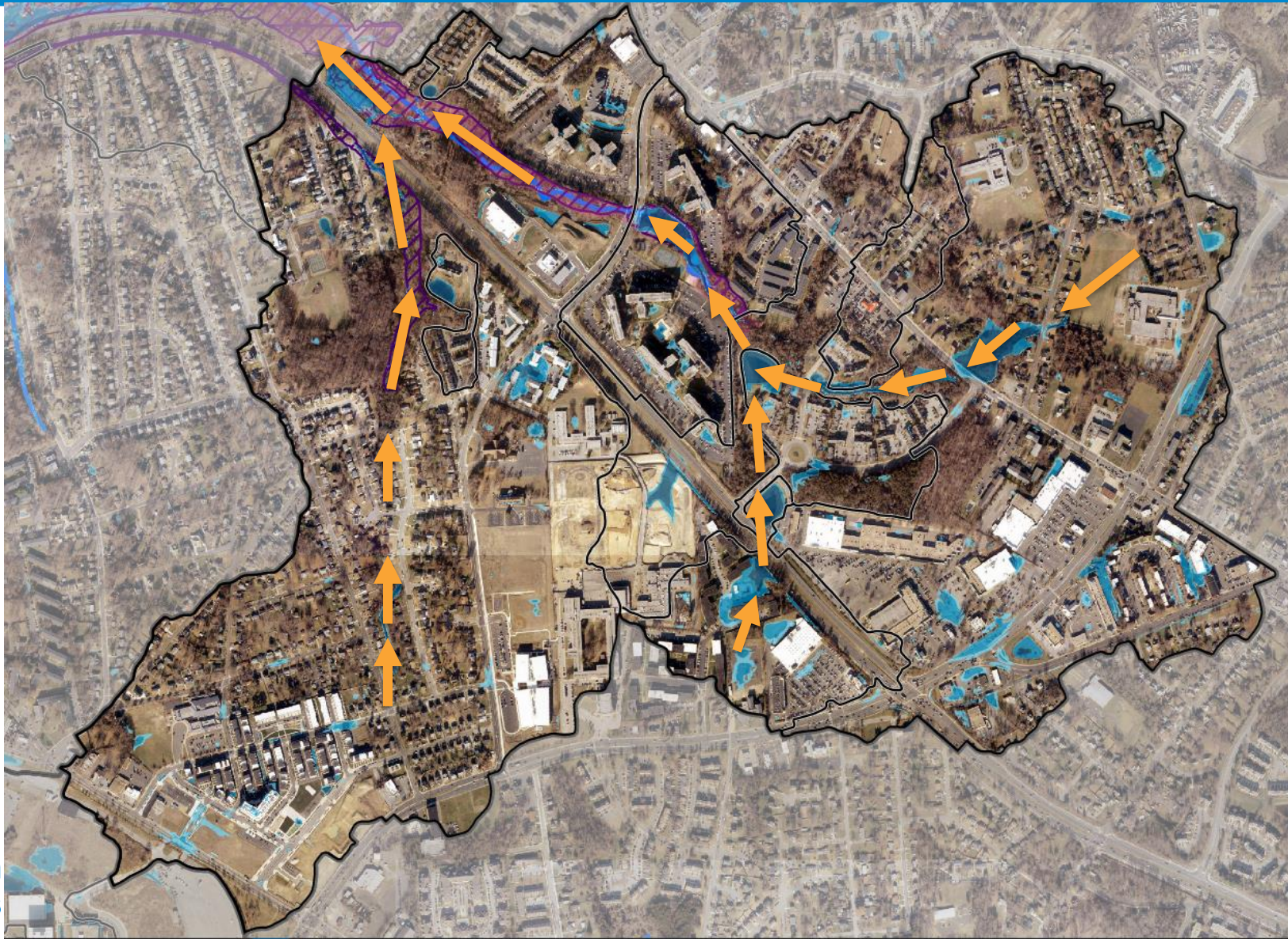
Identify primary stormwater pathways



How do we identify opportunities?

Search for potential opportunities along the water path

- 1) Bridge and Culvert Modifications
- 2) Floodable Public Spaces
- 3) Green Stormwater Infrastructure
- 4) Blue-Green Streets
- 5) Impervious Reduction
- 6) Pond Retrofits
- 7) Storm Drain Outfall Retrofits
- 8) Stream Daylighting
- 9) Stream, Wetland, and Floodplain Restoration
- 10) Tree Planting



How do we identify opportunities?

Search for potential opportunities along the water path

- 1) Bridge and Culvert Modifications
- 2) **Floodable Public Spaces**
- 3) Green Stormwater Infrastructure
- 4) Blue-Green Streets
- 5) Impervious Reduction
- 6) Pond Retrofits
- 7) Storm Drain Outfall Retrofits
- 8) Stream Daylighting
- 9) Stream, Wetland, and Floodplain Restoration
- 10) Tree Planting



Example: Athletic fields behind Francis Scott Key Elementary

How do we identify opportunities?

Search for potential opportunities along the water path

- 1) Bridge and Culvert Modifications
- 2) Floodable Public Spaces
- 3) Green Stormwater Infrastructure
- 4) **Blue-Green Streets**
- 5) Impervious Reduction
- 6) Pond Retrofits
- 7) Storm Drain Outfall Retrofits
- 8) Stream Daylighting
- 9) Stream, Wetland, and Floodplain Restoration
- 10) Tree Planting

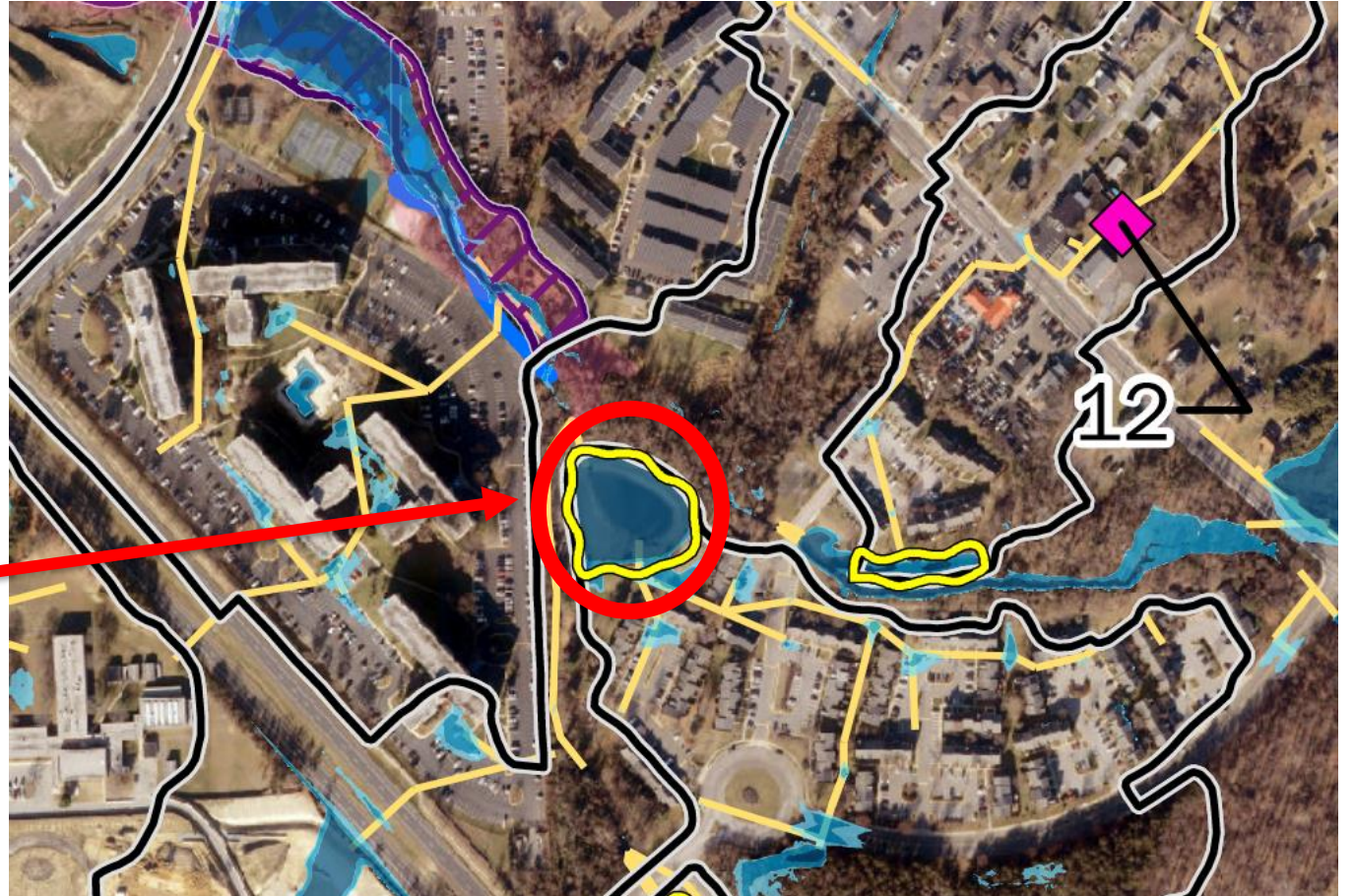


Example: Fort Drive between Towne Park Road and Crosier Street

How do we identify opportunities?

Search for potential opportunities along the water path

- 1) Bridge and Culvert Modifications
- 2) Floodable Public Spaces
- 3) Green Stormwater Infrastructure
- 4) Blue-Green Streets
- 5) Impervious Reduction
- 6) **Pond Retrofits**
- 7) Storm Drain Outfall Retrofits
- 8) Stream Daylighting
- 9) Stream, Wetland, and Floodplain Restoration
- 10) Tree Planting

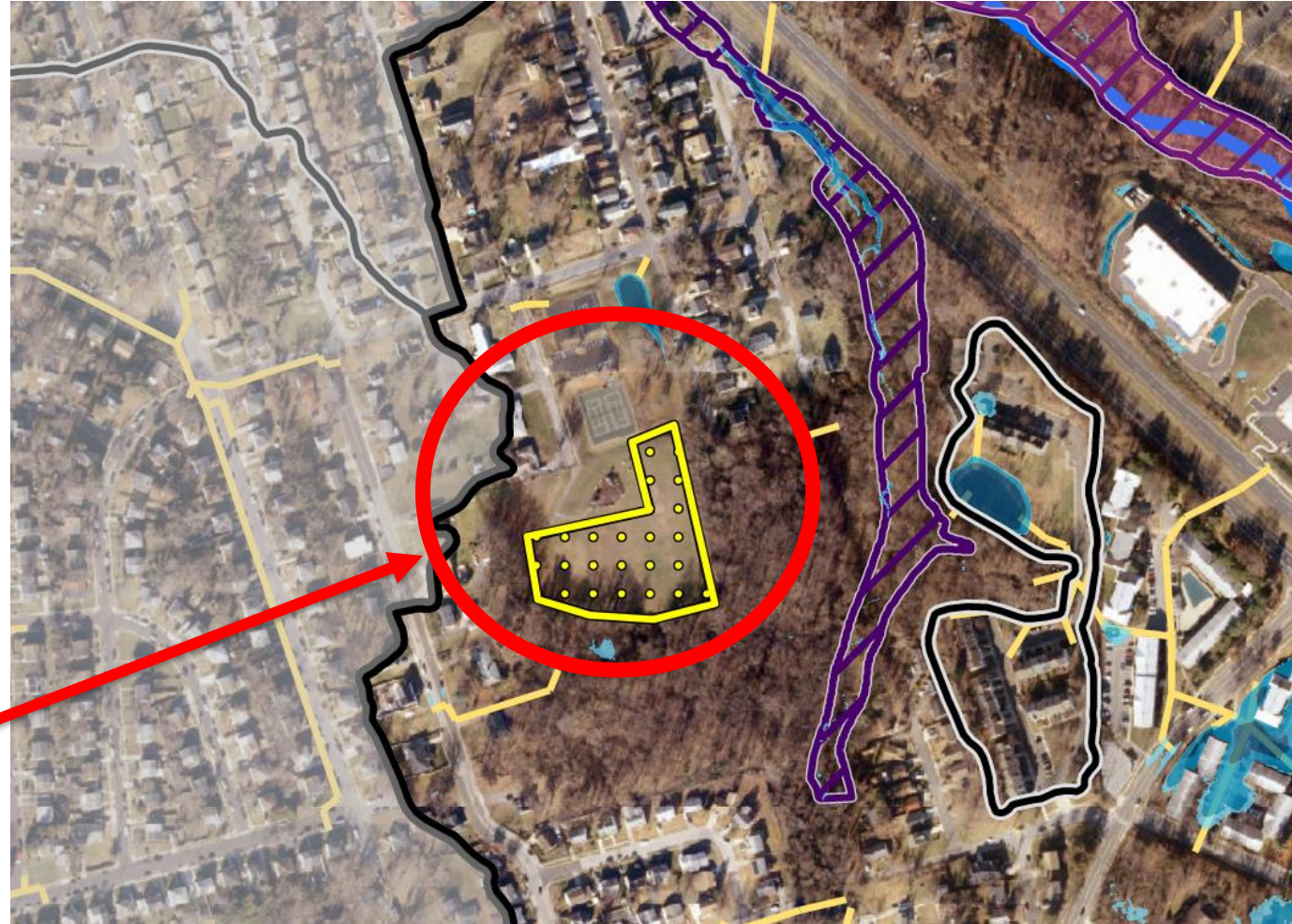


Example: Large Pond behind Oakcrest Tower Apartments

How do we identify opportunities?

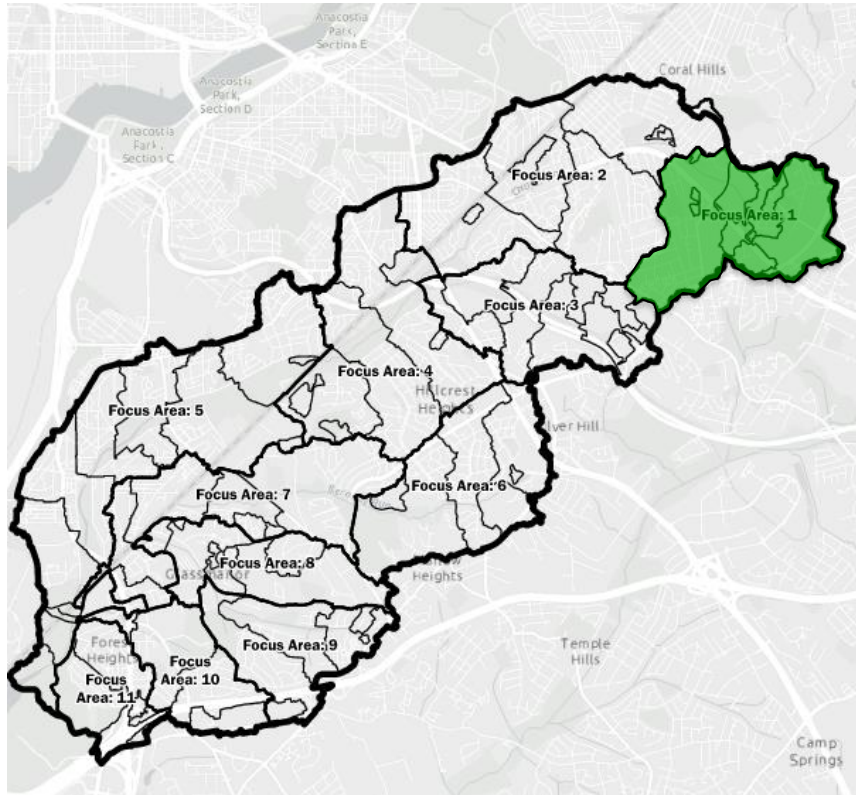
Search for potential opportunities along the water path

- 1) Bridge and Culvert Modifications
- 2) Floodable Public Spaces
- 3) Green Stormwater Infrastructure
- 4) Blue-Green Streets
- 5) Impervious Reduction
- 6) Pond Retrofits
- 7) Storm Drain Outfall Retrofits
- 8) Stream Daylighting
- 9) Stream, Wetland, and Floodplain Restoration
- 10) **Tree Planting**

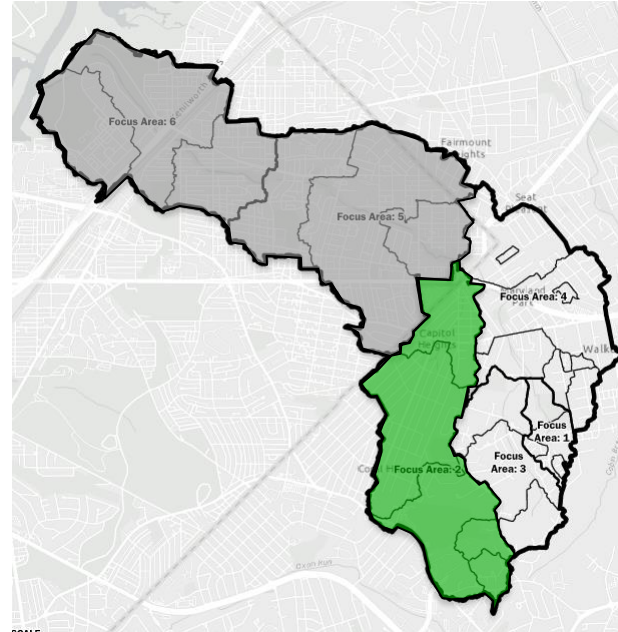


Example: Tree planting in open space near Dupont Heights Park

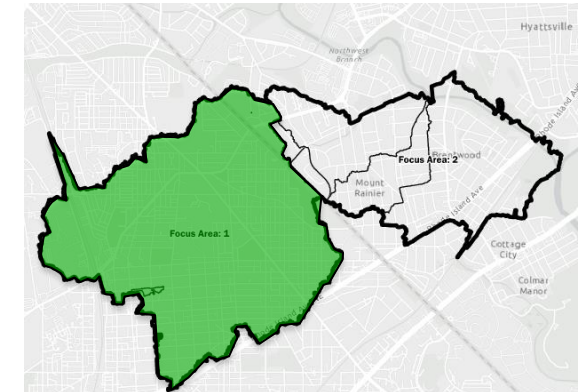
What is the scale of our search?



Oxon Run – 11 Focus Areas



Watts Branch – 4 Focus Areas*



Arundel Canal – 2 Focus Areas

*Note: We exempted neighborhoods in Watts Branch within the District as DOEE is currently executing a parallel study.

How do I use opportunities mapping?

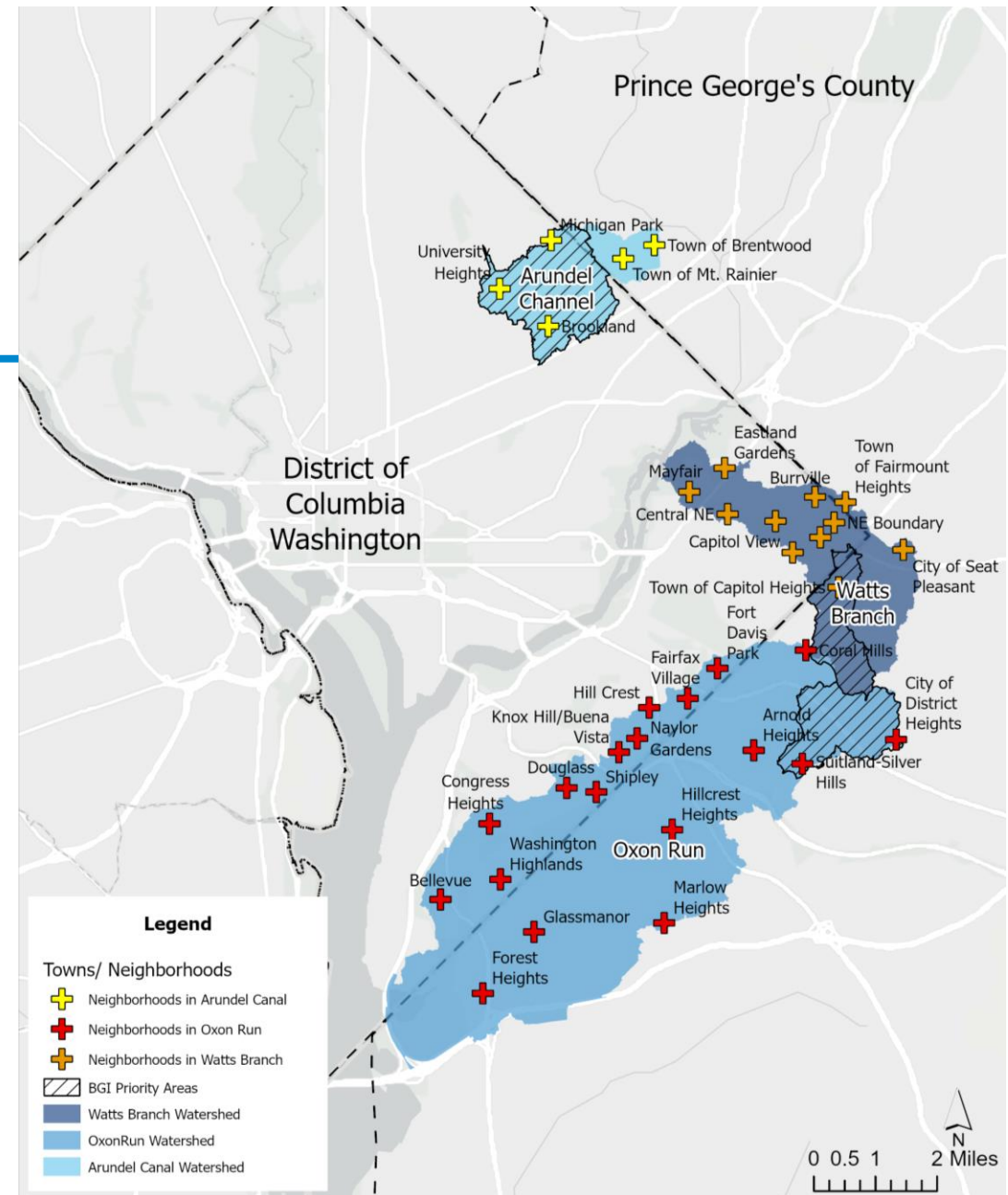
- Opportunities Maps are the starting point for project development
- This is a great tool for Community Based Organizations to initiate concepts.
- Empowers the neighborhood to better understand problems and choose from potential solutions.
- Some opportunities are easily actionable with the right partners.
- Some opportunities may take time, planning, and engagement.

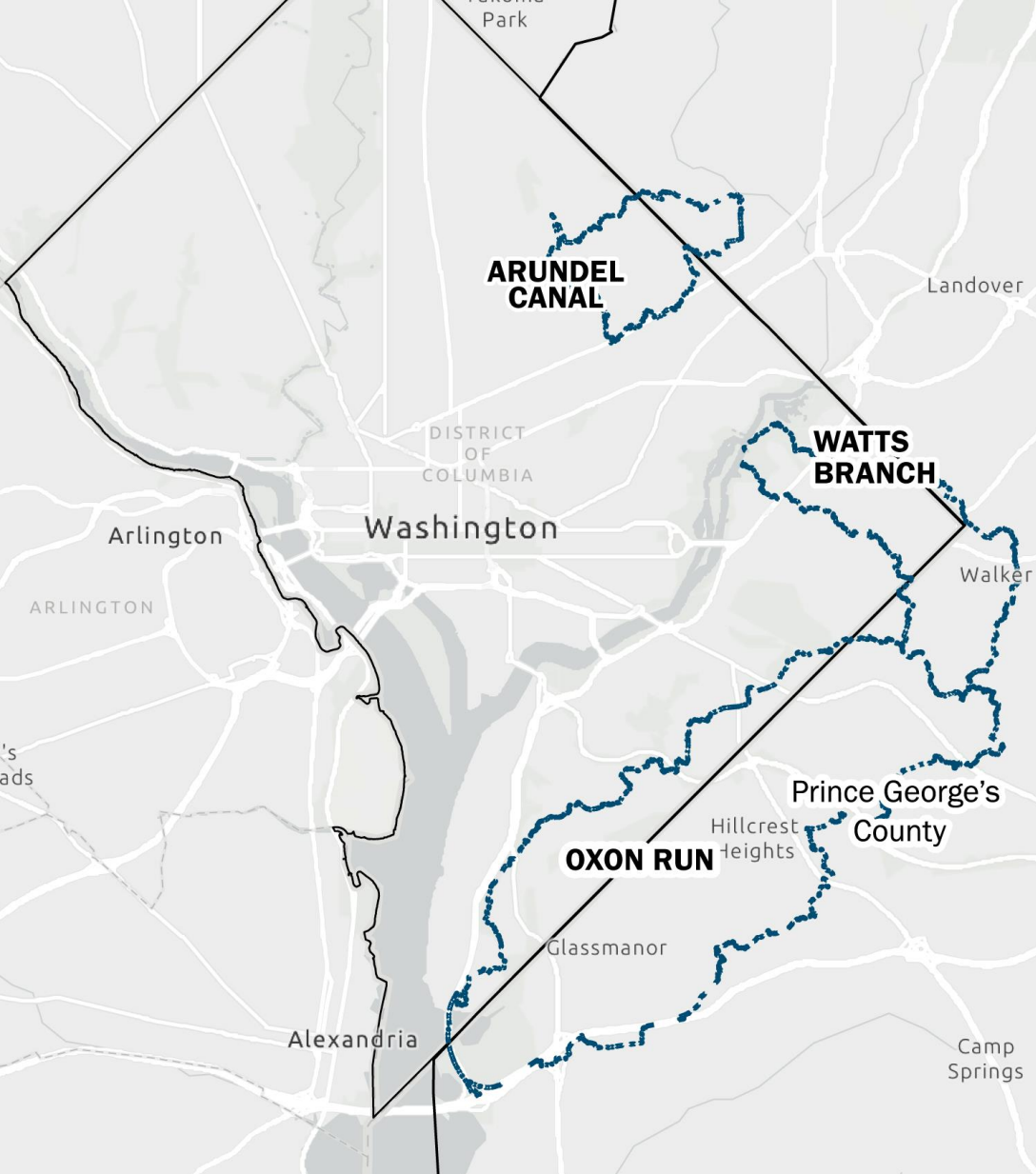


Example: Pavement reduction at the privately owned Silver Hill Shopping Center would offer great benefit but may be logistically challenging.

How do I advance my neighborhood to fundable concept?

- We intend to show you how!
- Our project includes developing demonstration concepts to outline the process to refine opportunities mapping into fundable work.
- Our team is beginning three concept designs- one in each watershed.
- We selected each location based on types of opportunities, feasibility of work, and your input so far!
- **Today's workshop will include you directly in the concept process.**





BREAKOUT ROOMS

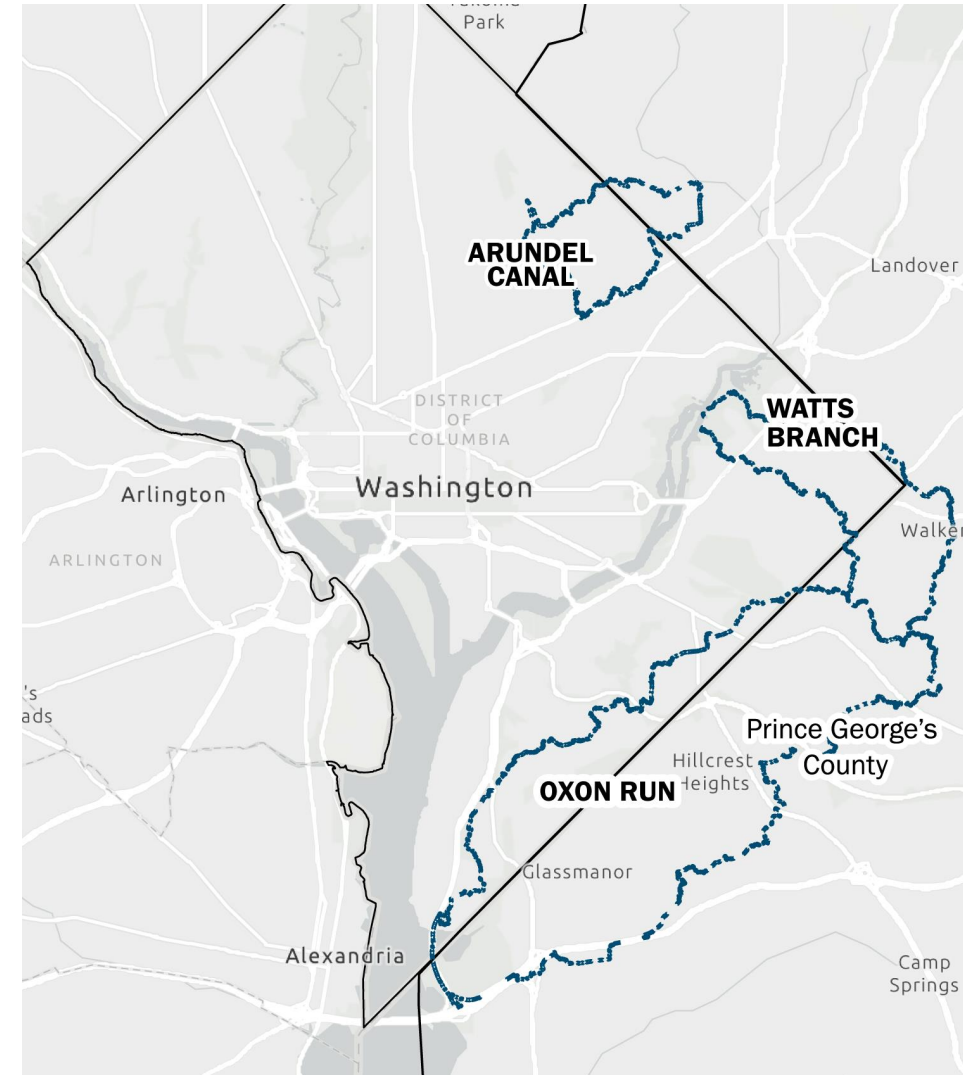


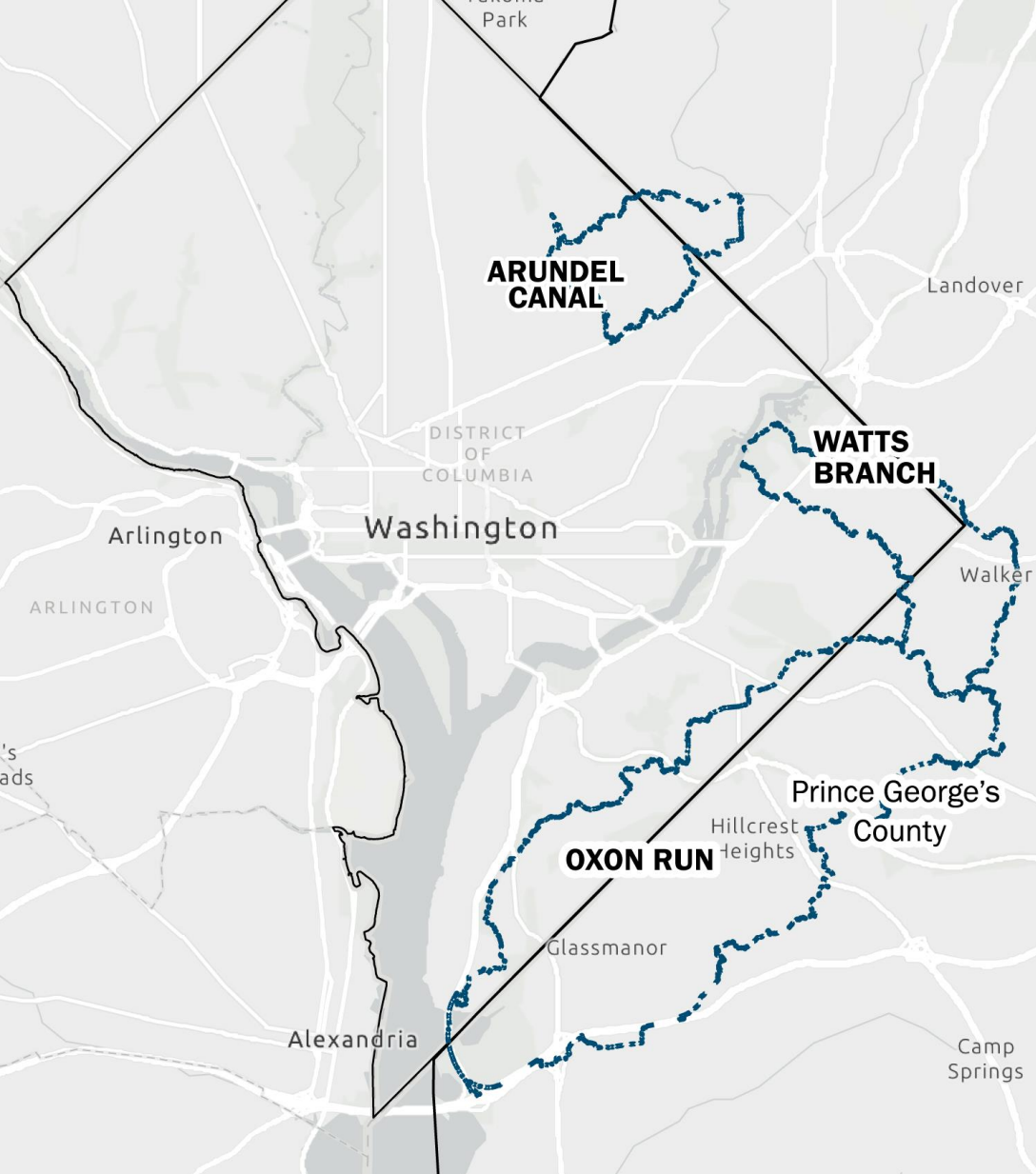
Metropolitan Washington
Council of Governments

Breakout Rooms: Exploring our Watersheds

- We'll now split into breakout rooms based on the three key watersheds—**Arundel Canal**, **Watts Branch**, and **Oxon Run**.
- This is your chance to share your insights, experiences, and priorities related to flooding and **Blue-Green Infrastructure (BGI)** in the community you work in.

Reminder: Your voice is key in shaping how we approach flood resilience in these watersheds.





Community Agreements

- ☒ Unmute Yourself/Come on Camera
- ☒ Step Up/Step Back
- ☒ Be Present

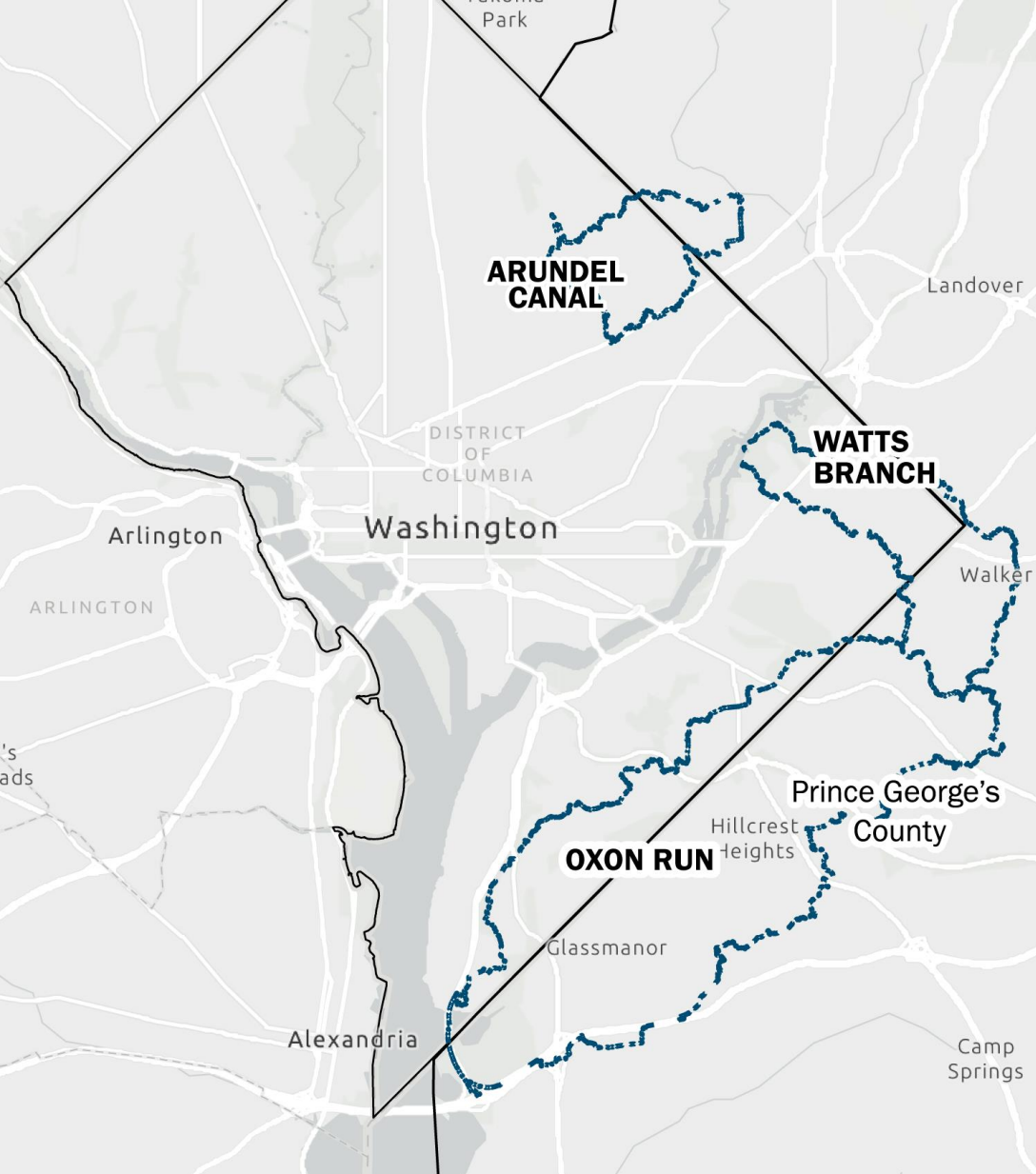


Breakout Room Recap: Key Takeaways

What were the *key takeaways* in your breakout room?

Have more to share?

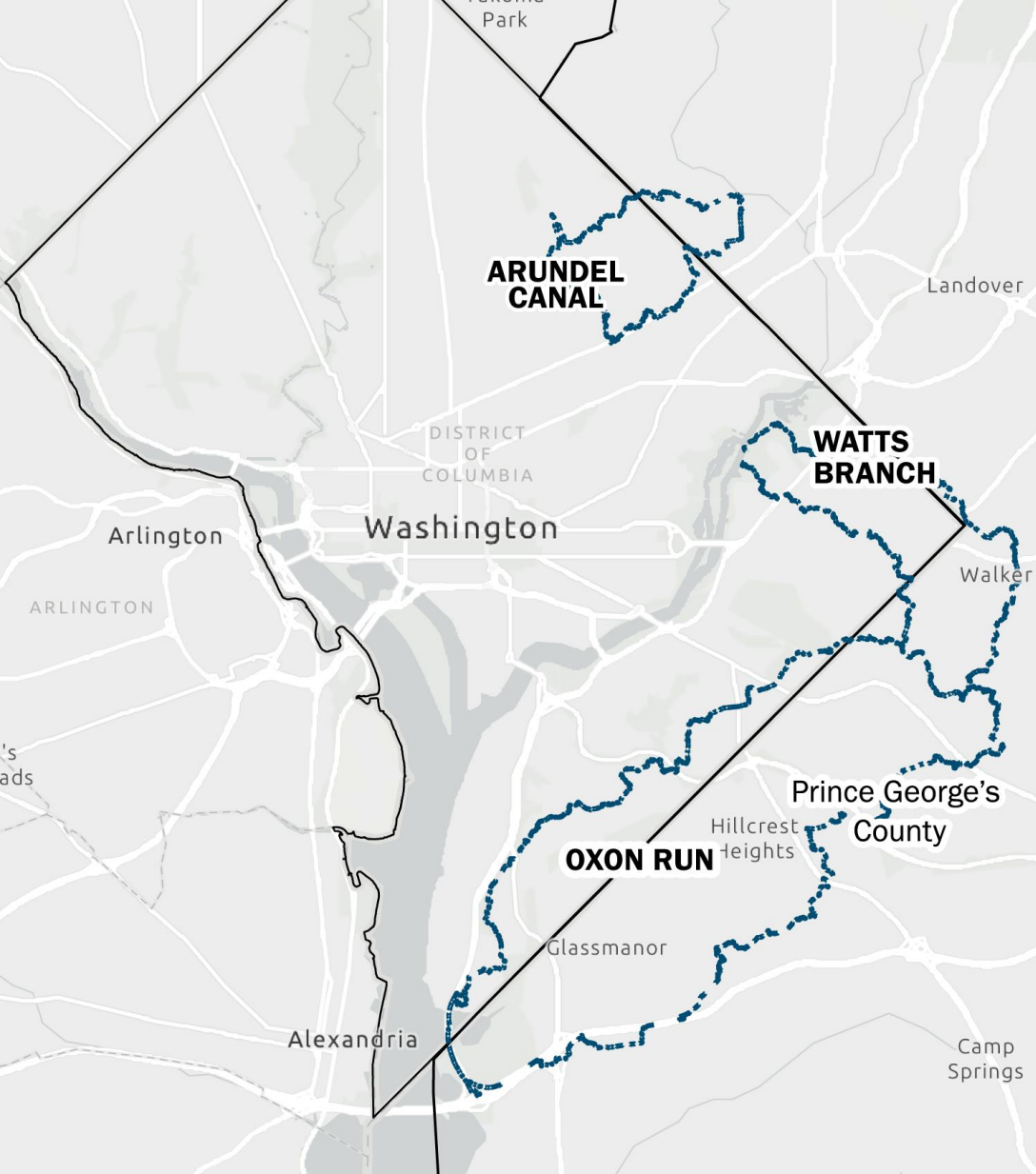
If you wanted to share insights related to a different watershed, please email us at BGI@MWCOG.ORG.



Question & Answers



Metropolitan Washington
Council of Governments



Closing Remarks & Next Steps



Metropolitan Washington
Council of Governments

Next Steps

Upcoming Events & Workshops

- 2 Pop-up Events –
 - **Mount Rainier Nature Center Community Day** – Saturday, April 12th – 11 am – 3 pm
 - **Seat Pleasant Day** – Saturday, May 3rd – Festival begins at 11 am
- Join us for our in-person **Regional Workshop** on Thursday, May 22nd
- **Feedback** gathered will be used to refine the BGI Planning framework and drive decision-making
- **Stay Connected**
Have questions or want to stay involved? Email us at BGI@MWCORG.ORG.
- **Project Updates**
Visit our website for the latest updates: www.mwcog.org/BGI



Workshop Evaluation

Workshop Survey: Please take a few minutes to complete the post-workshop survey. Your feedback helps us understand how the workshop was useful to you and how we can improve in the future.

Residents who **complete** the survey will receive a gift card. Please visit the link in the chat to let us know where we can send your gift card.



THANK YOU!

Stay connected! Be Engaged! Learn More
by visiting our project website!



Metropolitan Washington
Council of Governments