



Regional Drought and Water Supply Status

June 2026

Summary of Current Conditions in the COG Region

Drought conditions persist across the Potomac River Basin according to the latest U.S. Drought Monitor. While recent rainfall in mid- to late May provided short-term improvements in streamflow and soil moisture, most of the basin remains in **moderate to severe drought**, with long-term hydrologic deficits still significant.

Potomac River streamflows have improved in response to recent precipitation, but groundwater levels remain well below seasonal norms due to cumulative precipitation deficits over the past water year.

Wildfire risk remains an ongoing concern across the region. Despite recent rainfall, dry fuels, low groundwater, and the onset of hotter summer conditions continue to support elevated fire risk potential, particularly during dry and windy periods.

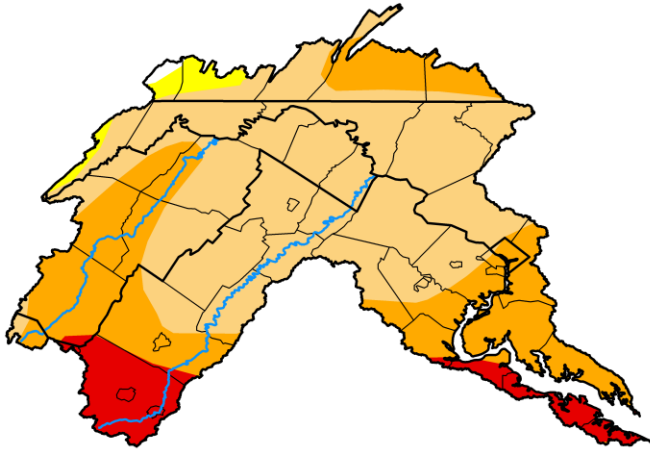
At the state level, the Virginia Department of Environmental Quality continues to maintain a Drought Warning advisory across nearly the entire state, including Northern Virginia. In Maryland, the Maryland Department of the Environment has escalated conditions, with much of the state now under a Drought Warning, including western, central, and parts of eastern Maryland.

COG's drought stage remains Normal under the Regional Water Supply and Drought Plan. However, the Drought Coordination Technical Committee met on May 20th and unanimously agreed to a drought Watch declaration, pending approval from the Chief Administrative Officers at their upcoming meeting on June 3rd.



U.S. Drought Monitor
Potomac Watershed

May 26, 2026
(Released Thursday, May. 28, 2026)
Valid 8 a.m. EDT



Drought Conditions (Percent Area)

	None	D0	D1	D2	D3	D4
Current	0.31	1.96	57.79	31.51	8.44	0.00
Last Week <small>05-21-2026</small>	0.00	0.31	2.72	74.14	22.83	0.00
3 Months Ago <small>02-26-2026</small>	0.00	1.10	90.78	8.12	0.00	0.00
Start of Calendar Year <small>01-08-2026</small>	0.00	0.00	14.96	85.04	0.00	0.00
Start of Water Year <small>10-02-2025</small>	4.61	34.36	39.54	17.48	4.01	0.00
One Year Ago <small>05-29-2025</small>	20.61	49.29	30.11	0.00	0.00	0.00

Intensity:

- None
- D0 Abnormally Dry
- D1 Moderate Drought
- D2 Severe Drought
- D3 Extreme Drought
- D4 Exceptional Drought

The Drought Monitor focuses on broad-scale conditions. Local conditions may vary. For more information on the Drought Monitor, go to <https://droughtmonitor.unl.edu/About.aspx>

Author:

Adam Allgood
NOAA/NWS/NCEP/CPC



droughtmonitor.unl.edu

Potomac River Streamflow Conditions

Instantaneous flows as of June 1, 2026

Location	Current Flow (cfs)	Median Flow (cfs)
Little Falls	17,200	9,050
Point of Rocks	15,400	7,040

Source: [USGS Little Falls](#)

Source: [USGS Point of Rocks](#)

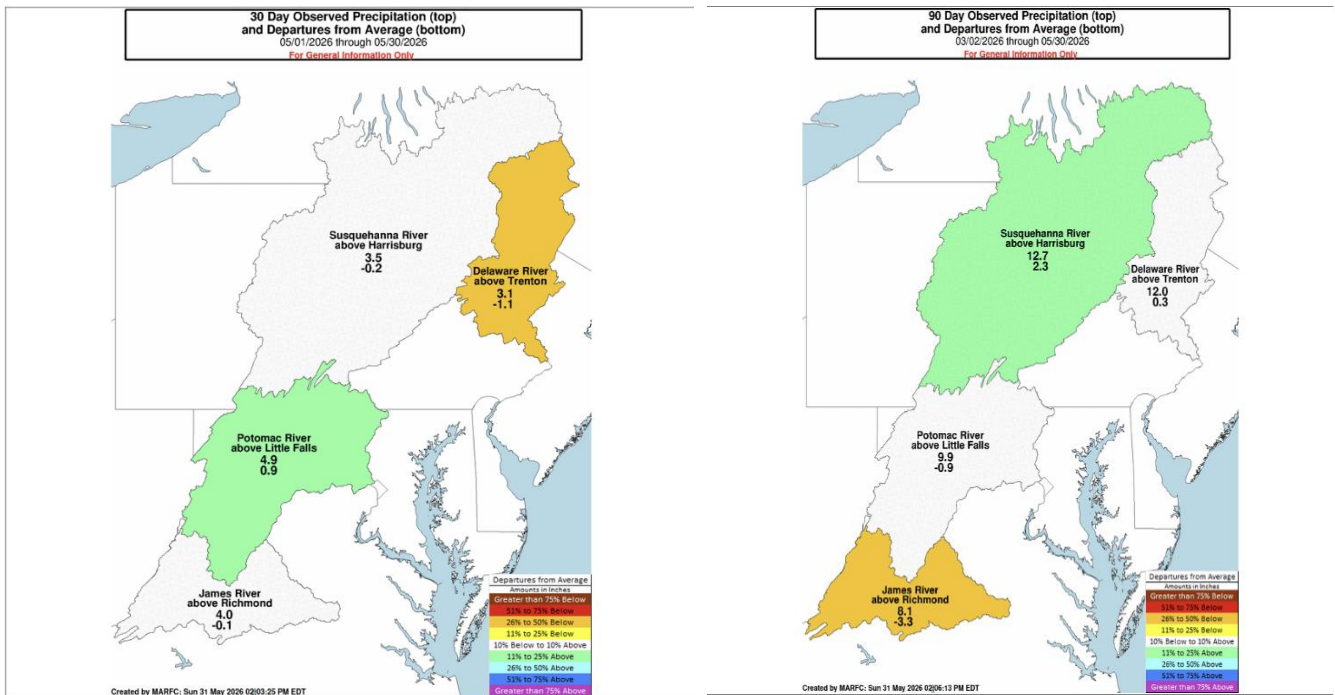


Observed Precipitation Conditions

30-Day Total: 4.9 inches (0.9 inches above normal)

90-Day Total: 9.9 inches (0.9 inches below normal)

Source: [NOAA Middle Atlantic River Forecast Center](#)



Groundwater Conditions

Groundwater levels are below normal across the region.

Source: <https://dashboard.waterdata.usgs.gov/app/nwd/?region=lower48&aoi=default>

Reservoir Storage Conditions

Jennings Randolph and Little Seneca reservoirs are within normal operating ranges.

Source: [U.S. Army Corps of Engineers](#)

Probability of Water Supply Releases

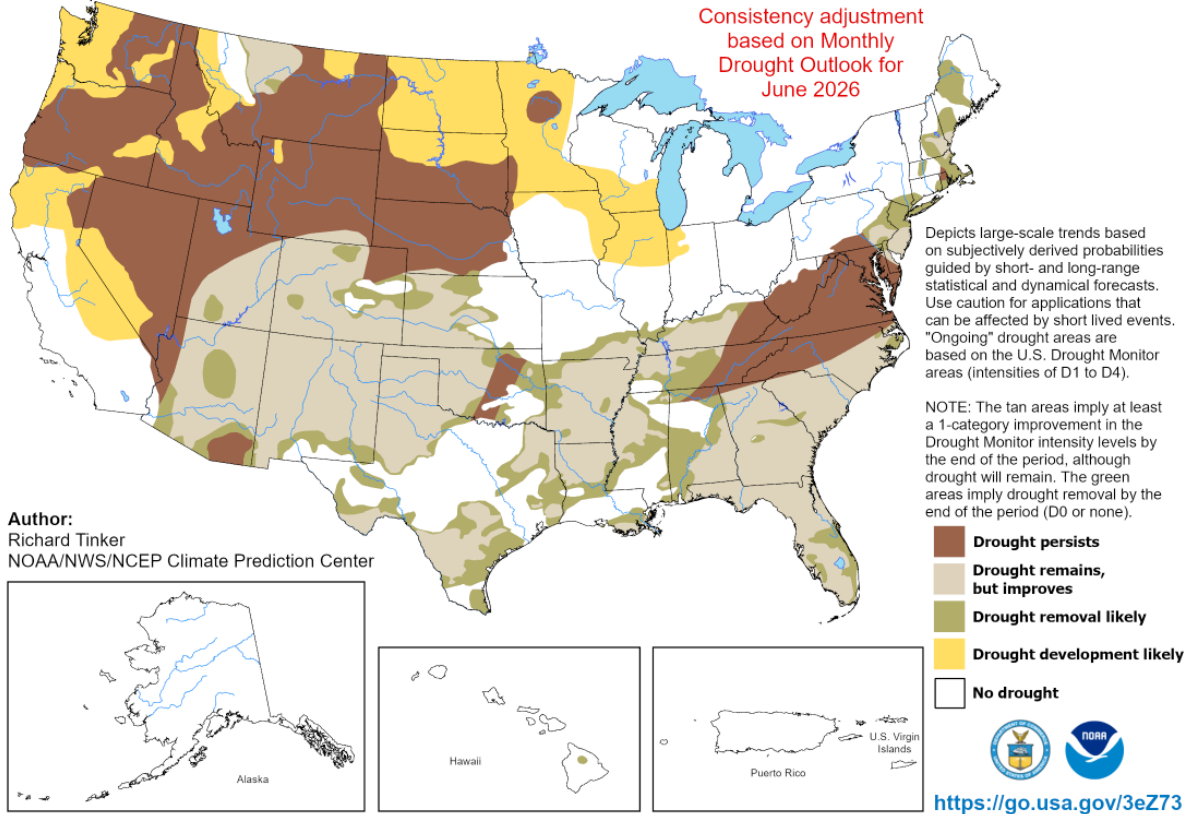
As of the May 2026 report, the probability of needing water supply releases from the Washington metropolitan area's backup reservoirs during summer and fall 2026 is above normal. Generally, the use of Jennings Randolph and Little Seneca reservoirs is triggered by low flows brought about by a combination of low precipitation and low groundwater levels. There is a 23 to 34 percent conditional probability that natural Potomac flow will drop below 600 to 700 million gallons per day (MGD) at Little Falls through December 31, 2026. Source: [ICPRB](#)

Climate and Drought Outlooks

The U.S. Seasonal Drought Outlook indicates that the drought is likely to persist over the next three months.

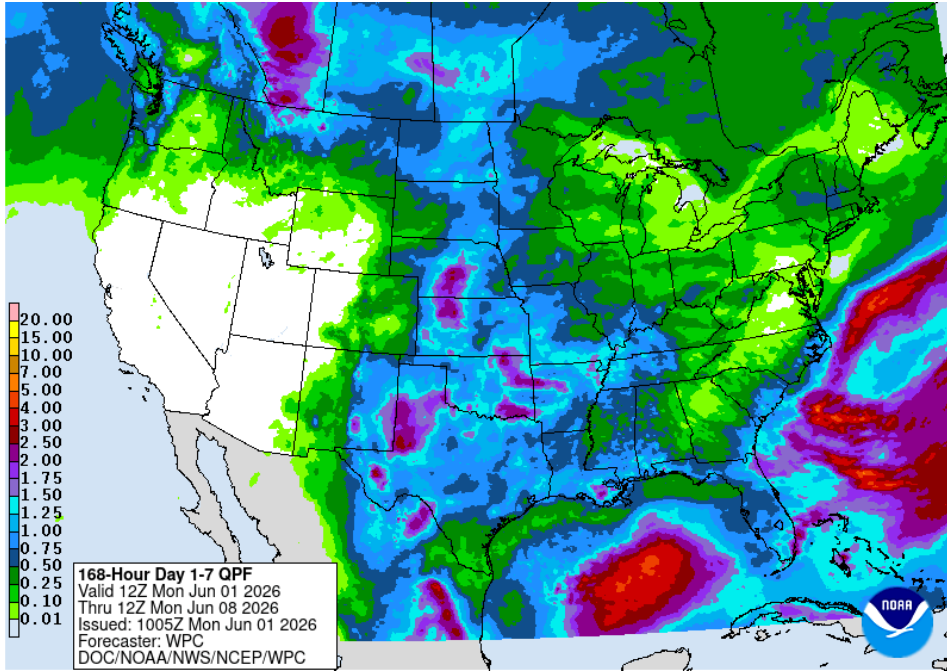
U.S. Seasonal Drought Outlook Drought Tendency During the Valid Period

Valid for June 1 - August 31, 2026
Released May 31, 2026





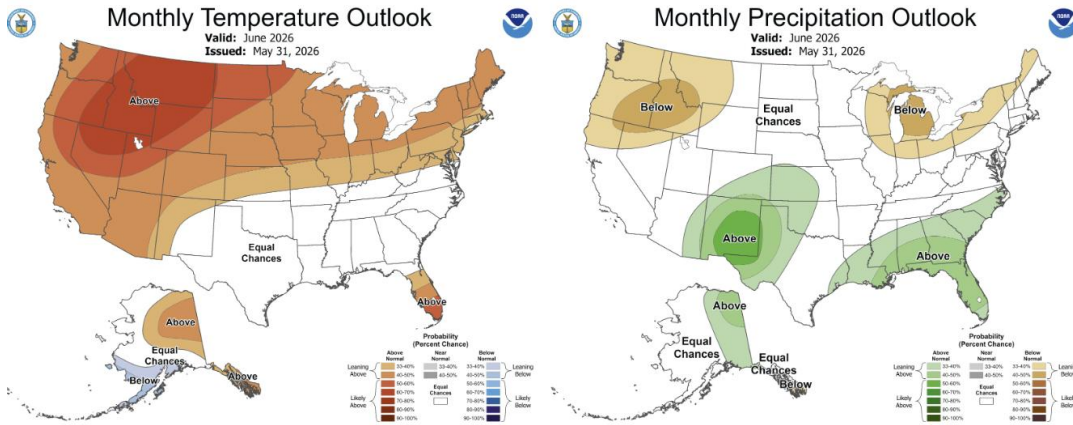
The seven-day quantitative precipitation forecast calls for approximately 0.10 inches.



Source: [NOAA NWS Weather Prediction Center](https://www.weather.gov/wmo)

Updated OFFICIAL 30-Day Forecasts

Issued: May 31, 2026



NOAA/ National Weather Service
National Centers for Environmental Prediction
Climate Prediction Center

Disclaimer
Information Quality
Credits

Privacy Policy
Freedom of Information Act (FOIA)
About Us

The June outlook from the National Weather Service Climate Prediction Center indicates equal chances for above-, below-, and near-normal precipitation and leaning towards above normal temperatures for our region. Source: [NOAA NWS Climate Prediction Center](https://www.weather.gov/wmo)