

---

# How Safe Are Our Roads?

---



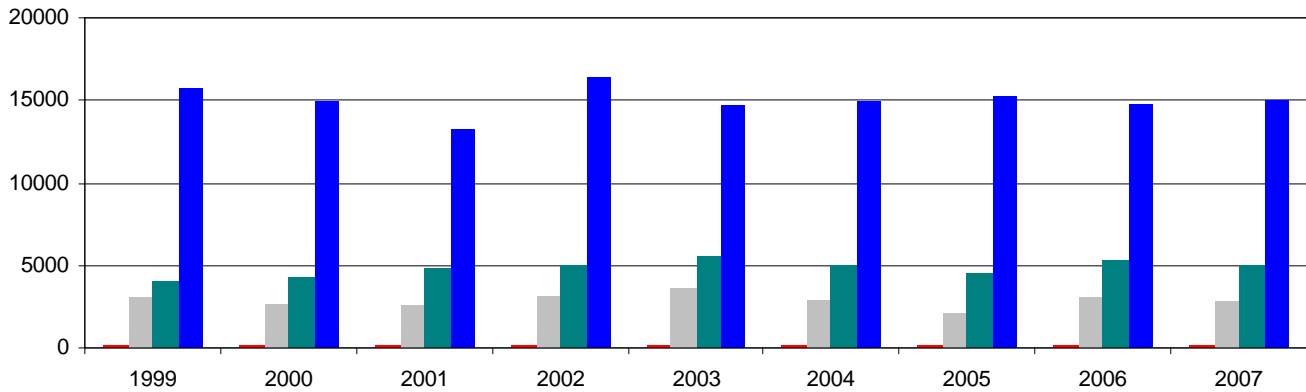
Annual Data Report on the Impact of Drunk Driving on  
Road Safety in the Washington D.C. Metropolitan Region  
December 2008



Metropolitan Washington  
Council of Governments

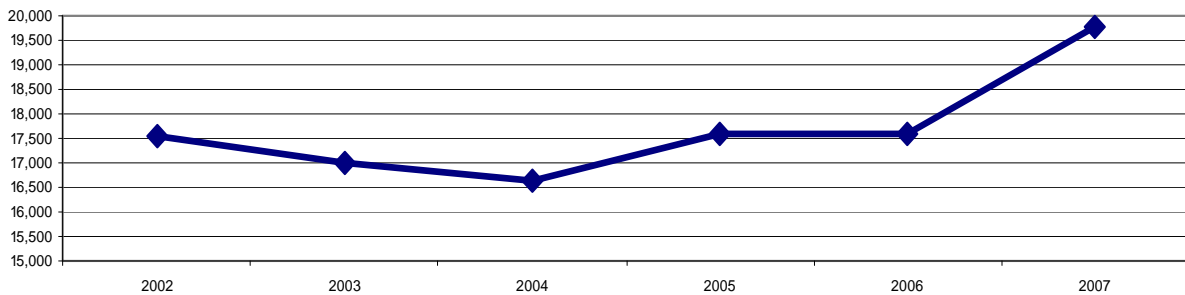
# Decreased Drunk Driving in the Metropolitan Washington Region Counters National Trend

**Alcohol-Related Fatalities, Injuries, Crashes, and Arrests**



■ fatalities   ■ injuries   ■ crashes   ■ arrests

**National Alcohol-Related Fatalities** \*



\* Source, National Highway Traffic Safety Administration

For the first time in two years, the number of alcohol-related traffic fatalities, injuries and crashes all declined in the Washington-metropolitan area in 2007.

Meanwhile, the number of local arrests for driving under the influence (DUI) or driving while intoxicated (DWI) increased by 0.9% in 2007.

The data are inline with recent research showing the value of both highly-visible law enforcement deterrent efforts like the region's Checkpoint Strikeforce campaign as well as increased public attention to the threat of drunk driving.

# How Safe Are Our Roads? — 2008 Overview

Findings in the 2008 report include:

**FATALITIES...** Local alcohol and or drug-related traffic deaths *decreased* by 2.5% between 2006 and 2007. This counters both the previous year's (2006) spike in such deaths in the Greater Washington Area as well as the three-consecutive year (2005, 2006 & 2007) increase in such deaths at the national level.

**CRASHES...** Area traffic crashes attributed to alcohol and or drugs *decreased* by more than 5.8% between 2006 and 2007. This counters the previous year's (2006) spike in such crashes in the Greater Washington Area.

**INJURIES...** Local alcohol and or drug-related traffic injuries also *decreased* by 5.4% between 2006 and 2007.

**ARRESTS...** Local arrests for either driving under the influence (DUI) or driving while intoxicated (DWI) *increased* by 0.9% between 2006 and 2007.

Of the Washington metropolitan area's 351 total traffic fatalities last year, 33% (116) of these roadway deaths were alcohol and or drug-related. 2007 national statistics (National Highway Traffic Safety Administration or NHTSA) show that 45% of total U.S. vehicular fatalities were reported as alcohol / drug-related.

While WRAP and COG are pleased to note the effectiveness of high-profile law enforcement deployments like local sobriety checkpoints and saturation patrols – and the voluntary compliance gained from the same – as a principal catalyst in the Greater Washington Area's recent downward DUI numbers, they also stress the need to resist complacency. Because someone is still arrested for drunk driving every 45-minutes in the Washington metropolitan area, vigilance in combating this completely preventable killer is still needed.

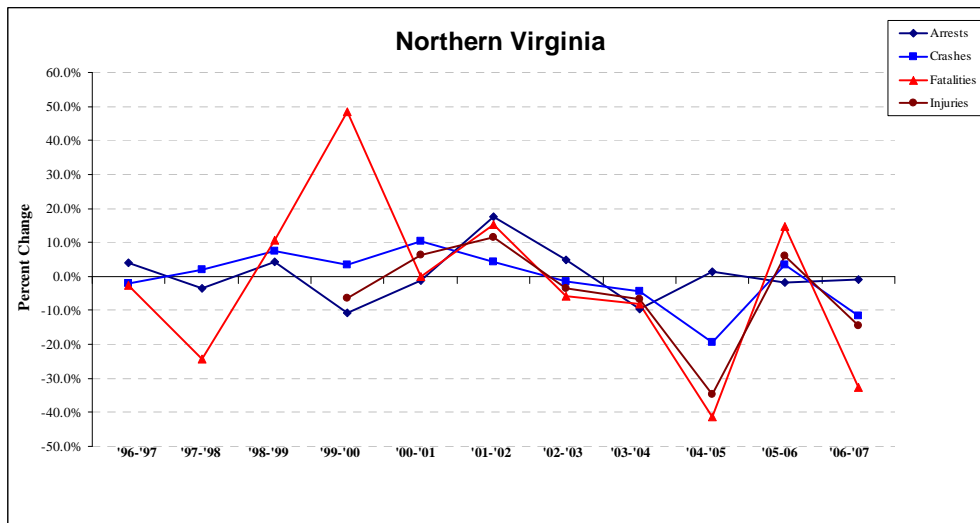
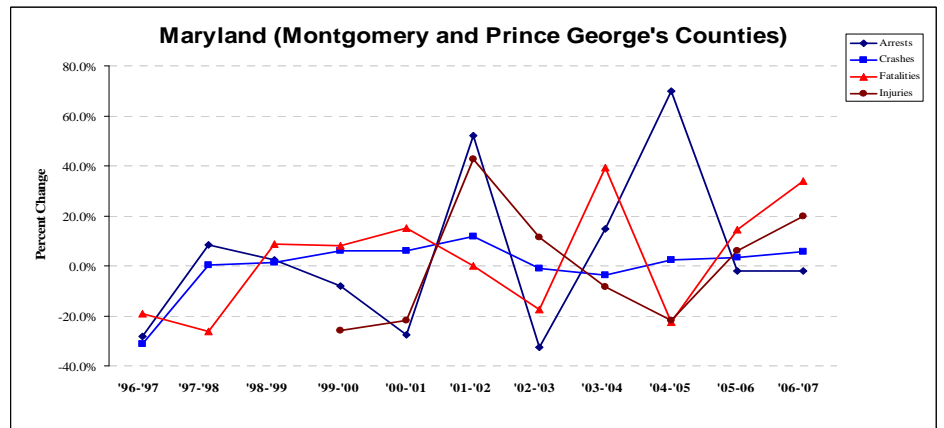
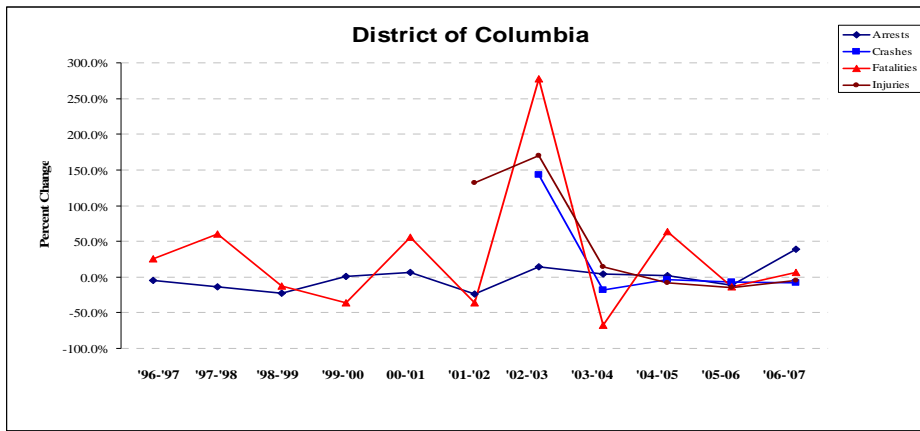


## Background

Data compiled in this report comes from national, state, and local sources including the U.S. Census Bureau, National Highway Traffic Safety Administration (NHTSA), and Virginia and Maryland Departments of Transportation. Primary data was collected from the local police departments of each jurisdiction.

It should be noted that the jurisdictional data in this report does not always include State Police data. The State Police in Maryland and Virginia are charged with enforcing traffic laws on state highways and interstate expressways; inclusion of this data would likely increase the number of incidents in all categories. It is possible that some jurisdictional data may include State Police figures because local police often respond to highway incidents when State Police are unavailable. In some jurisdictions, the data reported were provided by the state, and most likely include state police data.

# Sub-Regional Trends



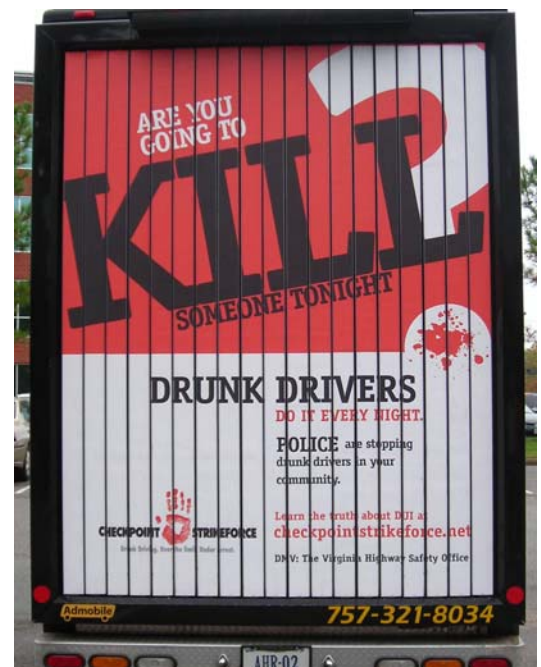
# 2007 Fatalities

Alcohol Related Traffic Fatalities by Jurisdiction, 1997-2007

	1997	2004	2005	2006	2007	Percent Change	
						2006-2007	1997-2007
<b>District of Columbia</b>	<b>10</b>	<b>11</b>	<b>18</b>	<b>15</b>	<b>16</b>	<b>-100.0%</b>	<b>-100.0%</b>
Maryland							
<i>State Total</i>	n/a	289	235	268	225	-16.0%	n/a
Montgomery County	17	16	9	17	13	-23.5%	-23.5%
Prince George's County	29	37	32	30	50	66.7%	72.4%
<b>MD Regional Total</b>	<b>46</b>	<b>53</b>	<b>41</b>	<b>47</b>	<b>63</b>	<b>34.0%</b>	<b>37.0%</b>
Virginia							
<i>State Total</i>	n/a	342	347	307	280	29.3%	n/a
Arlington County	5	1	0	1	3	200.0%	-40.0%
Fairfax County	17	26	20	24	19	-20.8%	11.8%
Loudoun County	5	8	3	5	0	-100.0%	-100.0%
Prince William County	10	10	4	22	12	-45.5%	20.0%
City of Alexandria	0	1	0	0	1	n/a	n/a
City of Fairfax	0	0	0	3	1	-66.7%	n/a
City of Falls Church	0	0	0	0	0	n/a	n/a
City of Manassas	0	0	0	0	1	n/a	n/a
City of Manassas Park	0	0	0	0	0	n/a	n/a
<b>Northern Virginia Total</b>	<b>37</b>	<b>46</b>	<b>27</b>	<b>55</b>	<b>37</b>	<b>-32.7%</b>	<b>0.0%</b>
<b>DC Metro Regional Total</b>	<b>93</b>	<b>110</b>	<b>86</b>	<b>117</b>	<b>116</b>	<b>-0.9%</b>	<b>7.5%</b>
<b>National Parks in Region</b>	<b>n/a</b>	<b>0</b>	<b>3</b>	<b>2</b>	<b>0</b>	<b>n/a</b>	<b>n/a</b>
<b>Regional Total Adjusted</b>	<b>n/a</b>	<b>110</b>	<b>89</b>	<b>119</b>	<b>116</b>	<b>-2.5%</b>	<b>n/a</b>
<b>National</b>	<b>n/a</b>	<b>16,628</b>	<b>17,590</b>	<b>17,602</b>	<b>19,771</b>	<b>12.3%</b>	<b>n/a</b>

Total Traffic Fatalities by Jurisdiction 1997-2007

	1997	2004	2005	2006	2007	Percent Change	
						2006-2007	1997-2006 <sup>^</sup>
<b>District of Columbia</b>	<b>63</b>	<b>45</b>	<b>49</b>	<b>41</b>	<b>54</b>	<b>31.7%</b>	<b>-14.3%</b>
Maryland							
<i>State Total</i>	n/a	643	614	651	614	-5.7%	n/a
Montgomery County	55	59	38	57	49	-14.0%	-10.9%
Prince George's County	85	121	134	111	126	13.5%	48.2%
<b>MD Regional Total</b>	<b>140</b>	<b>180</b>	<b>172</b>	<b>168</b>	<b>175</b>	<b>4.2%</b>	<b>25.0%</b>
Virginia							
<i>State Total</i>	n/a	919	947	797	1,027	28.9%	n/a
Arlington County	7	3	4	4	6	50.0%	-14.3%
Fairfax County	59	64	61	67	48	-28.4%	-18.6%
Loudoun County	13	11	20	19	22	15.8%	69.2%
Prince William County	32	20	23	46	27	-41.3%	-15.6%
City of Alexandria	2	3	2	1	5	400.0%	150.0%
City of Fairfax	1	0	2	3	2	-33.3%	100.0%
City of Falls Church	0	0	0	0	0	n/a	n/a
City of Manassas	0	0	3	1	3	200.0%	n/a
City of Manassas Park	0	0	0	0	0	n/a	n/a
<b>Northern Virginia Total</b>	<b>114</b>	<b>101</b>	<b>115</b>	<b>141</b>	<b>113</b>	<b>-19.9%</b>	<b>-0.9%</b>
<b>DC Metro Regional Total</b>	<b>317</b>	<b>326</b>	<b>336</b>	<b>350</b>	<b>342</b>	<b>-2.3%</b>	<b>7.9%</b>
<b>National Parks in Region</b>	<b>n/a</b>	<b>16</b>	<b>14</b>	<b>13</b>	<b>9</b>	<b>-30.8%</b>	<b>n/a</b>
<b>Regional Total Adjusted</b>	<b>n/a</b>	<b>342</b>	<b>350</b>	<b>363</b>	<b>351</b>	<b>-3.3%</b>	<b>n/a</b>
<b>National</b>	<b>n/a</b>	<b>42,636</b>	<b>43,510</b>	<b>42,642</b>	<b>43,945</b>	<b>3.1%</b>	<b>n/a</b>



# Injuries

## Motor Vehicle Injuries in 2007

	Total Injuries	Alcohol Related Injuries	Percentage of Total Injuries that were Alcohol Related	Percent Change Alcohol Related Injuries, 2006-2007
<b>District of Columbia</b>	<b>4,070</b>	<b>264</b>	<b>6.5%</b>	<b>-36.5%</b>
Maryland				
Montgomery County	6,905	484	7.0%	106.8%
Prince George's County	7,771	787	10.1%	-4.7%
<b>MD Regional Total</b>	<b>14,676</b>	<b>1,271</b>	<b>8.7%</b>	<b>19.9%</b>
Virginia				
Arlington County	1,201	127	10.6%	-17.5%
Fairfax County	8,019	648	8.1%	-8.1%
Loudoun County	631	27	4.3%	-80.4%
Prince William County	2,624	288	11.0%	-2.4%
City of Alexandria	1,403	115	8.2%	26.4%
City of Fairfax	241	22	9.1%	10.0%
City of Falls Church	40	0	0.0%	-100.0%
City of Manassas	288	16	5.6%	-60.0%
City of Manassas Park	18	6	33.3%	-45.5%
<b>Northern Virginia Total</b>	<b>14,465</b>	<b>1,249</b>	<b>8.6%</b>	<b>-14.6%</b>
<b>DC Metro Regional Total</b>	<b>33,211</b>	<b>2,784</b>	<b>8.4%</b>	<b>-5.2%</b>
<b>National Parks in Region</b>	<b>675</b>	<b>43</b>	<b>6.4%</b>	<b>-14.0%</b>
<b>Regional Total Adjusted</b>	<b>33,886</b>	<b>2,827</b>	<b>8.3%</b>	<b>-5.4%</b>



Research shows that sobriety check points, although they generate a relatively low number of arrests, are an effective way to reduce drunk driving, especially when combined with news coverage and public education campaigns. Sobriety check-points consistently reduced alcohol-related crashes, typically by about 20%. The effectiveness of checkpoints does not diminish over time. (<http://www.cdc.gov/ncipc/duip/research/checkpoints.htm>)



Media coverage highlights the cooperative efforts of law enforcement agencies as well as support from elected officials.

## Total Traffic Injuries by Jurisdiction, 1997-2007

	1997	2004	2005	2006	2007	Percent Change	
						2006-2007	1997-2007#
<b>District of Columbia</b>	-	<b>5,421</b>	<b>5,007</b>	<b>4,265</b>	<b>4,070</b>	<b>-4.6%</b>	<b>-53.9%</b>
Maryland							
Montgomery County	8,740	7,642	6,870	6,759	6,905	2.2%	-21.0%
Prince George's County	11,113	5,681	5,792	5,595	7,771	38.9%	-30.1%
<b>MD Regional Total</b>	<b>19,853</b>	<b>13,323</b>	<b>12,662</b>	<b>12,354</b>	<b>14,676</b>	<b>18.8%</b>	<b>-26.1%</b>
Virginia							
Arlington County	1,929	1,408	1,220	1,374	1,201	-12.6%	-37.7%
Fairfax County	8,333	5,113	6,582	8,537	8,019	-6.1%	-3.8%
Loudoun County	1,102	899	1,206	1,711	631	-63.1%	-42.7%
Prince William County	2,922	2,847	2,586	3,341	2,624	-21.5%	-10.2%
City of Alexandria	1,323	769	853	1,317	1,403	6.5%	6.0%
City of Fairfax	389	196	205	315	241	-23.5%	-38.0%
City of Falls Church	128	196	180	240	40	-83.3%	-68.8%
City of Manassas	350	232	403	448	288	-35.7%	-17.7%
City of Manassas Park	41	33	23	43	18	-58.1%	-56.1%
<b>Northern Virginia Total</b>	<b>16,517</b>	<b>11,693</b>	<b>13,258</b>	<b>17,326</b>	<b>14,465</b>	<b>-16.5%</b>	<b>-12.4%</b>
<b>DC Metro Regional Total</b>	<b>36,370*</b>	<b>30,437</b>	<b>30,927</b>	<b>33,945</b>	<b>33,211</b>	<b>-2.2%</b>	<b>-8.7%</b>
<b>National Parks in Region</b>	<b>n/a</b>	<b>747</b>	<b>703</b>	<b>736</b>	<b>675</b>	<b>-8.3%</b>	<b>n/a</b>
<b>Regional Total Adjusted</b>	<b>n/a</b>	<b>31,184</b>	<b>31,630</b>	<b>34,681</b>	<b>33,886</b>	<b>-2.3%</b>	<b>n/a</b>

# Crashes

## Total Traffic Crashes by Jurisdiction, 1997-2007

	1997	2003	2004	2005	2006	2007	Percent Change 2006- 1997- 2007 2007	
<b>District of Columbia</b>	<b>16,300</b>	<b>22,722</b>	<b>18,490</b>	<b>17,717</b>	<b>16,478</b>	<b>15,100</b>	<b>-8.4%</b>	<b>-7.4%</b>
Maryland								
Montgomery County	13,015	13,553	13,053	12,235	12,076	12,460	3.2%	-4.3%
Prince George's County	14,792	16,885	15,901	16,349	15,863	15,060	-5.1%	1.8%
<b>MD Regional Total</b>	<b>27,807</b>	<b>30,438</b>	<b>28,954</b>	<b>28,584</b>	<b>27,939</b>	<b>27,520</b>	<b>-1.5%</b>	<b>-1.0%</b>
Virginia								
Arlington County	3,409	3,532	3,584	3,383	2,984	2,649	-11.2%	-22.3%
Fairfax County	15,453	19,040	18,728	18,363	18,254	17,152	-6.0%	11.0%
Loudoun County	1,933	5,286	3,824	5,718	4,234	5,720	35.1%	195.9%
Prince William County	4,541	5,230	5,492	5,648	7,132	5,852	-17.9%	28.9%
City of Alexandria	2,517	2,188	2,274	2,193	2,019	1,947	-3.6%	-22.6%
City of Fairfax	733	1,125	1,124	1,137	926	817	-11.8%	11.5%
City of Falls Church	291	245	283	196	240	243	1.3%	-16.5%
City of Manassas	668	813	923	948	931	725	-22.1%	8.5%
City of Manassas Park	86	276	114	136	111	73	-34.2%	-15.1%
<b>Northern Virginia Total</b>	<b>29,631</b>	<b>37,735</b>	<b>36,346</b>	<b>37,722</b>	<b>36,831</b>	<b>35,178</b>	<b>-4.5%</b>	<b>18.7%</b>
<b>DC Metro Regional Total</b>	<b>73,738</b>	<b>90,895</b>	<b>83,790</b>	<b>84,023</b>	<b>81,248</b>	<b>77,798</b>	<b>-4.2%</b>	<b>5.5%</b>
<b>National Parks in Region</b>	--	<b>2,978</b>	<b>3,186</b>	<b>2,896</b>	<b>2,945</b>	<b>2,669</b>	<b>-9.4%</b>	--
<b>Regional Total Adjusted</b>	--	<b>90,895</b>	<b>86,976</b>	<b>86,919</b>	<b>84,193</b>	<b>80,467</b>	<b>-4.4%</b>	--

\*Regional totals do not include jurisdictions with unavailable data.



To help reduce crashes, local safety experts demonstrate simulated impaired senses using distortion goggles to help the public understand the effect of alcohol driving.

## Percentage of all Traffic Crashes that were Alcohol Related, 1997-2007

	1997	2003	2004	2005	2006	2007	
<b>District of Columbia</b>		-	3.1%	3.8%	1.3%	2.5%	1.7%
Maryland							
Montgomery County	6.2%	7.5%	7.7%	8.0%	7.8%	8.0%	
Prince George's County	6.5%	7.3%	7.7%	7.5%	8.4%	9.3%	
<b>MD Regional Total</b>	<b>6.4%</b>	<b>7.3%</b>	<b>7.7%</b>	<b>7.7%</b>	<b>8.2%</b>	<b>8.7%</b>	
Virginia							
Arlington County	8.2%	9.2%	9.0%	6.6%	9.7%	10.6%	
Fairfax County	6.3%	6.5%	6.6%	5.1%	6.6%	6.1%	
Loudoun County	7.1%	4.7%	6.4%	3.2%	6.0%	3.4%	
Prince William County	7.9%	8.8%	8.4%	6.5%	7.2%	8.3%	
City of Alexandria	6.0%	5.7%	5.5%	5.1%	5.7%	6.1%	
City of Fairfax	4.0%	5.2%	5.2%	3.1%	3.8%	5.9%	
City of Falls Church	4.1%	7.8%	6.7%	0.5%	4.6%	1.6%	
City of Manassas	5.1%	6.3%	5.5%	9.4%	7.6%	5.7%	
City of Manassas Park	9.3%	4.3%	10.5%	9.6%	19.8%	20.5%	
<b>Northern Virginia Total</b>	<b>6.7%</b>	<b>6.7%</b>	<b>7.0%</b>	<b>5.2%</b>	<b>6.9%</b>	<b>6.4%</b>	
<b>DC Metro Regional Total</b>	<b>6.5%*</b>	<b>6.0%</b>	<b>6.5%</b>	<b>5.2%</b>	<b>6.4%</b>	<b>6.3%</b>	
<b>National Parks in Region</b>	n/a	n/a	3.5%	3.4%	3.4%	4.1%	
<b>Regional Total Adjusted</b>	n/a	6.0%	5.7%	5.2%	6.3%	6.2%	



# Arrests



While education, and engineering are important, the third “E” enforcement is the appropriate response when voluntary compliance is lacking.

## Total Alcohol Related Driving Arrests by Jurisdiction, 1995-2007

	1995	2004	2005	2006	2007	Percent Change	
						2006-2007	1997-2007
<b>District of Columbia</b>	<b>3,025</b>	<b>1,780</b>	<b>1,807</b>	<b>1,600</b>	<b>2,224</b>	<b>39.0%</b>	<b>-18.1%</b>
Maryland							
Montgomery County	3,407	3,705	3,559	3,714	3,487	-6.1%	-9.4%
Prince George's County	2,354	1,743	1,927	1,667	1,814	8.8%	-24.4%
<b>MD Regional Total</b>	<b>5,761</b>	<b>5,448</b>	<b>5,486</b>	<b>5,381</b>	<b>5,301</b>	<b>-1.5%</b>	<b>-15.1%</b>
Virginia							
Arlington County	890	547	574	688	647	-6.0%	-37.0%
Fairfax County	2,714	2,861	3,015	2,769	2,586	-6.6%	-14.7%
Loudoun County	447	773	694	616	690	12.0%	153.7%
Prince William County	1,313	1,621	1,611	1,794	1,935	7.9%	32.4%
Alexandria City	528	394	425	479	567	-100.0%	-100.0%
Fairfax City	414	273	268	167	184	10.2%	-48.5%
Falls Church City	66	40	34	54	48	-11.1%	-11.1%
Manassas City	-	284	219	218	160	-26.6%	-25.2%
Manassas Park City	-	71	110	106	n/a*	n/a*	n/a*
<b>Northern Virginia Total</b>	<b>6,372*</b>	<b>6,864</b>	<b>6,950</b>	<b>6,891</b>	<b>6,817</b>	<b>-1.1%</b>	<b>-1.4%</b>
<b>DC Metro Regional Total</b>	<b>15,158*</b>	<b>14,092</b>	<b>14,243</b>	<b>13,872</b>	<b>14,342</b>	<b>-3.4%</b>	<b>-8.5%</b>
<b>National Parks in Region</b>	--	<b>839</b>	<b>989</b>	<b>974</b>	<b>634</b>	<b>-34.9%</b>	--
<b>Regional Total Adjusted</b>	--	<b>14,931</b>	<b>15,232</b>	<b>14,846</b>	<b>14,976*</b>	<b>0.9%</b>	--

\*Regional totals do not include jurisdictions with unavailable data.

Source: Jurisdictional contacts, see specific contact in Methodology

## Total Alcohol Related Driving Arrests of Juveniles and Adults by Jurisdiction, 2000-2007

	1999			2004			2005			2006			2007			
	≤ 18	> 18	Total	≤ 18	> 18	Total	≤ 18	> 18	Total	≤ 18	> 18	Total	≤ 18	> 18	Total	
<b>District of Columbia</b>			<b>1,828</b>	<b>36</b>	<b>1,744</b>	<b>1,780</b>			<b>1,807</b>	<b>1,807</b>	--	--	<b>1,600</b>	<b>4</b>	<b>2,220</b>	<b>2,224</b>
Maryland																
Montgomery County*			4,599	363	3,342	3,705	285	3,274	3,559	125	3,589	3,714	48	3,439	3,487	
Prince George's County#			2,315	2	1,741	1,743	3	1,924	1,927	4	1,663	1,667	5	1,809	1,814	
<b>MD Regional Total</b>			<b>6,914</b>	<b>365</b>	<b>5,083</b>	<b>5,448</b>	<b>288</b>	<b>5,198</b>	<b>5,486</b>	<b>129</b>	<b>5,252</b>	<b>5,381</b>	<b>53</b>	<b>5,248</b>	<b>5,301</b>	
Virginia																
Arlington County	5	916	921	3	542	545	0	574	574	3	685	688	7	640	647	
Fairfax County	58	2,800	2,858	20	2,841	2,861	28	2,987	3,015			2,769	22	2,564	2,604	
Loudoun County	2	302	304	7	589	596	23	671	694	70	546	616	12	678	690	
Prince William County*	19	1,948	1,967	18	1,903	1,921	12	1,599	1,611	27	1,767	1,794	17	1,918	1,935	
Alexandria City	2	344	346	2	392	394	0	425	425	1	478	479	3	564	567	
Fairfax City	2	267	269	1	272	273	3	265	268	1	166	167	3	181	184	
Falls Church City	0	47	47	1	34	35	0	34	34	2	52	54			48	
Manassas City	2	206	208	0	284	284	2	217	219	1	217	218	0	160	160	
Manassas Park City	1	44	45	1	8	9	0	110	110	1	105	106			0	
<b>Northern Virginia Total</b>	<b>91</b>	<b>6,874</b>	<b>6,965</b>	<b>53</b>	<b>6,865</b>	<b>6,918</b>	<b>68</b>	<b>6,882</b>	<b>6,950</b>	<b>106</b>	<b>4,016</b>	<b>6,891</b>	<b>64</b>	<b>6,705</b>	<b>6,817</b>	
<b>DC Metro Regional Total</b> <sup>^</sup>			<b>15,707</b>	<b>462</b>	<b>14,523</b>	<b>14,146</b>	<b>462</b>	<b>14,523</b>	<b>14,243</b>	<b>235</b>	<b>9,268</b>	<b>13,872</b>	<b>121</b>	<b>14,173</b>	<b>14,342</b>	
<b>National Parks in Region</b>	--	--	--	<b>8</b>	<b>831</b>	<b>839</b>	<b>6</b>	<b>983</b>	<b>989</b>	<b>5</b>	<b>969</b>	<b>974</b>	<b>n/a</b>	<b>n/a</b>	<b>634</b>	
<b>Regional Total Adjusted</b>	<b>91</b>	<b>6,874</b>	<b>6,965</b>	<b>61</b>	<b>7,696</b>	<b>14,985</b>	<b>61</b>	<b>7,696</b>	<b>15,232</b>	<b>240</b>	<b>10,237</b>	<b>14,846</b>	<b>121</b>	<b>14,173</b>	<b>14,976+</b>	

<sup>^</sup>DC Metro Regional totals for under and over age 18 years not included for years with unavailable juvenile data

\*Montgomery County data for persons under the age of 21 years determined to be driver.

#Prince George's County data reflects number of arrests for persons under the age of 24 years.

+Regional totals do not include jurisdictions with unavailable data.



# Youth Data

## Alcohol Related Crashes, Injuries, and Arrests for Persons Under 21 Years of Age By Region, 2007

	Fatalities	Percentage of Alcohol related Fatalities	Crashes	Percentage of Alcohol-related Crashes	Injuries	Percentage of Alcohol-related Injuries	Arrests	Percentage of Alcohol-related Arrests
District of Columbia	n/a	n/a	n/a	n/a	n/a	n/a	4	0.2%
Maryland								
Montgomery County*	0	n/a	100	10.0%	48	9.9%	296	1.3%
Prince George's County#	1	2.6%	71	5.0%	41	5.2%	5	0.3%
<b>MD Regional Total</b>	<b>1</b>	<b>1.9%</b>	<b>171</b>	<b>7.1%</b>	<b>89</b>	<b>7.0%</b>	<b>52</b>	<b>0.9%</b>
Virginia								
Arlington County	0	n/a	28	10.0%	16	12.6%	7	1.2%
Fairfax County	6	54.6%	197	18.7%	104	16.0%	22	0.7%
Loudoun County	0	n/a	37	19.1%	16	59.3%	12	1.7%
Prince William County	2	50%	75	15.5%	54	18.7%	17	1.1%
City of Alexandria	0	n/a	11	9.3%	14	12.2%	3	0.7%
City of Fairfax	0	n/a	6	12.5%	3	13.6%	3	1.1%
City of Falls Church	0	n/a	0	n/a	0	n/a	n/a	0.0%
City of Manassas	1	100%	6	14.6%	5	31.3%	0	0.0%
City of Manassas Park	0	n/a	2	13.3%	0	n/a	n/a	0.0%
<b>Northern Virginia Total</b>	<b>9</b>	<b>42.8%</b>	<b>362</b>	<b>16.2%</b>	<b>212</b>	<b>17.0%</b>	<b>64</b>	<b>0.9%</b>
<b>DC Metro Regional Total</b>	<b>10</b>	<b>13.5%</b>	<b>533</b>	<b>10.9%</b>	<b>301</b>	<b>10.8%</b>	<b>120</b>	<b>0.8%</b>
<b>National Parks in Region</b>	<b>0</b>	<b>n/a</b>	<b>4</b>	<b>3.7%</b>	<b>7</b>	<b>16.3%</b>	<b>20</b>	<b>2.0%</b>
<b>Regional Total Adjusted</b>	<b>10</b>	<b>12.8%</b>	<b>537</b>	<b>10.7%</b>	<b>308</b>	<b>10.9%</b>	<b>140</b>	<b>0.9%</b>

^Regional totals do not include jurisdictions with unavailable data.

\*Montgomery County data for persons under the age of 21 years determined to be driver and "at fault" for accident

#Prince George's County data represents persons under the age of 24 years



Teen activism is an important tool to prevent underage alcohol use and life-time drunk driving avoidance

# Methodology

Following is a listing of the agencies providing local jurisdictional data:

**District of Columbia:**

- Metropolitan Police Department
- U.S. Park Police

**Maryland**

- State of Maryland: Maryland State Police
- Prince George’s County Police Department
- Montgomery County Department of Police

**Virginia**

- State of Virginia: Virginia Department of Motor Vehicles, 2007 Crash Facts
- Arlington County Police Department
- Fairfax County Police Department
- Loudoun County Sheriff’s Office
- Prince William County Police Department
- City of Alexandria Police Department
- City of Fairfax Police Department
- City of Falls Church Police Department
- City of Manassas Police Department
- City of Manassas Park Police Department

data collection, coding, and management. In addition, the range and type of data collected may not be consistent across jurisdictions. The data reported and analyzed in this report reflect data as reported by contact agencies. Independent verification of data to ensure accuracy is not within the scope of this report.

Information on data collection and management systems and changes within jurisdictions was not solicited. In addition, changes in laws or judicial priorities may result in increased attention to specific data (e.g. blood alcohol level in driver fatalities related to stricter server laws). In some cases, this may result in missing data or data that appears inconsistent when examined against the same values for previous years. It is beyond the scope of this report to identify data methodology or priority changes for each jurisdiction.

Data on impaired driver involvement in motor vehicle fatalities, injuries, crashes and arrests was requested for alcohol-impairment only. Therefore, data are assumed to reflect only alcohol impairment and are reported in this way, although some cases may involve drug use.

The number of incidents, total and related to alcohol impairment, is very small for some jurisdictions. Due to the small numbers, jurisdictional analysis might easily misrepresent the problem. For example, an increase of one alcohol-related fatality would have little impact in a jurisdiction that saw 50 alcohol-related fatalities the previous year, but would appear to represent a significant change in a small jurisdiction with only one or two alcohol-related fatalities the previous year.

Data are reported and analyzed by absolute numbers only. At this time, information that would allow identification of comparable rates is unavailable. It is assumed that people involved in motor vehicle crashes and arrests may live within or outside the Washington Metro region. Collection of data on driver or passenger residence versus jurisdiction of accident is beyond the scope of this report. Calculating rates based on the Washington Metro region’s population or number of licensed drivers would not accurately represent the problem since drivers may be from outside the jurisdiction.

Data on people under the age of 21 years is collected in an inconsistent manner among jurisdictions. Caution must be used in evaluation of this data due to varied definitions and missing data.

Many charts display two regional total numbers. The first, “DC Regional Total” is the total of the District of Columbia, the Maryland Region, and the Northern Virginia Region. The second regional number, “Regional Total Adjusted” includes data from the United States Park Police. Because the Park Police information has only been recently collected, it is shown separately and the two regional totals are shown so that comparisons with previous years can be done.

**Data Analysis**

The findings in this report are based on data collected from organizations and agencies from across the Washington Metro region. Data tables provide totals within the Washington Metro region as well as individual jurisdictions. Analysis focuses on changes in motor vehicle fatalities, injuries, crashes, and arrests. Results are reported as numbers and percentage of alcohol-related incidents to total numbers across time.

**Data Limitations**

It is important to note limitations that affected collection and analysis of this data, as they may limit comparability across jurisdictions and influence the level of reasonable analysis. Whenever possible, limitations are noted within the tables and figures. It is important that the reader keep the following in mind:

It should be noted that Montgomery County, Maryland has recently changed and enhanced their database system. While these changes allow them to capture data more accurately, comparisons to previous year’s data should be made with caution. In addition, because this report tracks just two jurisdictions in Maryland, regional totals could also be affected.

There is no standardization for data definitions, collection, or recording within the Washington Metro region. Each agency has its own system of

